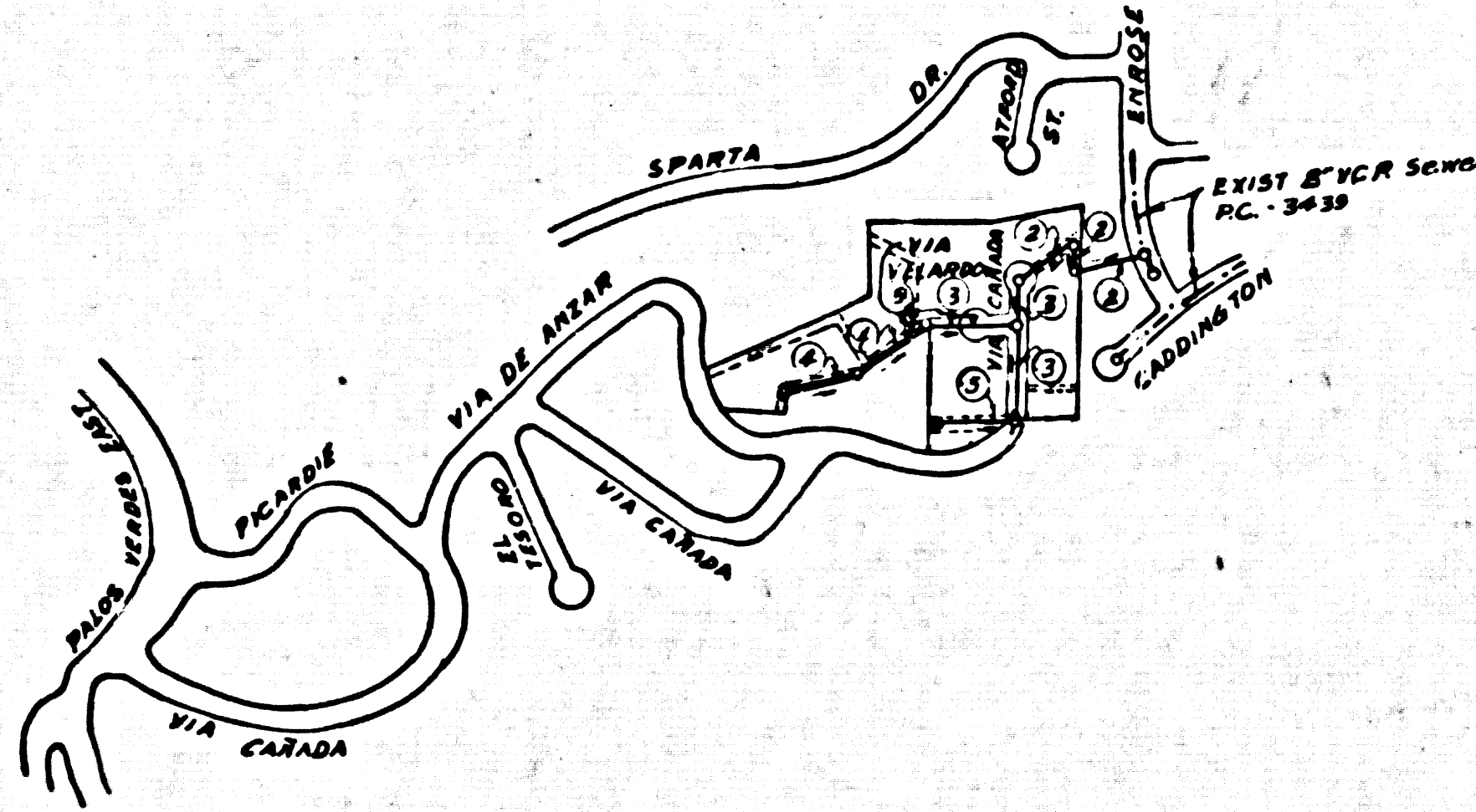


B.M. 5Y 5991 ELEV. 762.679  
 C.S. Monument 6 up on SE Corner  
 Palos Verdes Drive East & Picardie  
 Road 35' East & 34' South & Intersection  
 Marked No. 16E1933  
 Palos Verdes QUAD. 19.60



INDEX MAP  
 SCALE 1"=600'  
 TRACT NO. 27220

NOTES CONTINUED  
 20. ALL AREAS WHERE SPECIAL BACKFILL IS CALLED FOR SHALL COMPLY WITH THE FOLLOWING:  
 (A) BACKFILL TRENCH & REPLACE OTHER EARTH REMOVED SO AS TO ACHIEVE THE NATURAL OR FINISHED GRADES & SLOPES SHOWN ON THE GRADING PLAN APPROVED FOR THIS TRACT BY THE BUILDING & SAFETY DIVISION.  
 (B) ALL BACKFILL & EARTH REPLACED SHALL BE MECHANICALLY COMPACTED TO A MINIMUM OF 90% OF MAX. DENSITY PER AASHTO SOIL COMPACTION TEST T-99-65, AS MODIFIED, ACCEPTABLE CERTIFICATION OF SUCH COMPACTION SHALL BE SUBMITTED TO THE CONSTRUCTION DIVISION OF THE DEPT. OF CO. ENG.

REVISIONS MADE 5-19-64	
Page 4-- 3+49.21 to 4+14.40-- Revised grades to fit as graded ground.	
Page 5A-- Revised grades to fit as graded ground.	
APPROVED: <i>Raymond L. Quigley</i> RAYMOND L. QUIGLEY R.C.E. 7191	
APPROVED: <i>Ralph Schaffer</i> 5/26/64	
APPROVED: <i>Ralph Schaffer</i> 2/21/64	
APPROVED: <i>Raymond L. Quigley</i> RAYMOND L. QUIGLEY R.C.E. 7191	
REVISIONS MADE 2-14-64	
Page 2A & 2B -- 1. Moved the M.H. at sta. 2+68.57 to avoid an exist. power pole.	
	2. Revised finished grade elevations and profile of sewer from sta. 1+00.00 to 3+22.07 to reflect as graded lots.
Page 4	Revised stationing on M.H. at 3+50.92 and 7+80.73 to keep them within R/W.
Page 5B	Extend line 56.33 westerly & revised profile.

DOUBLE SCALE  
 LOMITA BLDG. DIST. NO. 72

PROFILE ALIGNMENT AND GRADE OF  
 SANITARY SEWERS PAGE 1  
 TO BE CONSTRUCTED IN  
 TRACT NO. 27220

PRIVATE CONTRACT NO. 6451

W.S. 27  
 3 SHEETS, 5 PAGES  
 SCALE: VERT. 1"=4' HORIZ. 1"=40'  
 June 1963

PREPARED IN THE OFFICES OF  
 SOUTH BAY ENGINEERING CORP.

By: *Raymond L. Quigley*  
 R.C.E. NO. 7191

FOR LEGEND SEE PLAN NO. S-6-64

NOTE:  
 GRADES TO WHICH THIS IMPROVEMENT IS TO BE CONSTRUCTED ARE SHOWN ON PLANS AND PROFILES. GRADE POINTS FOR TOP OF CURBS, CENTER LINE OF STREETS, OR CENTER LINE OF ALLEYS ARE SHOWN BY CIRCLES ON PROFILES AT ALL POINTS BETWEEN DESIGNATED POINTS THE GRADE SHALL BE ESTABLISHED SO AS TO CONFORM TO A STRAIGHT LINE DRAWN BETWEEN SAID DESIGNATED POINTS. ELEVATIONS ARE IN FEET ABOVE U.S.C. & G.S. SEA LEVEL DATUM OF 1929.  
 THIS DRAWING AND THE DATA HEREON ARE HEREBY MADE A PART OF THE SPECIFICATIONS.  
 BEFORE WORK CAN BE STARTED, THE CONTRACTOR MUST OBTAIN A PERMIT TO EXCAVATE IN COUNTY STREETS FROM THE L.A. COUNTY ROAD DEPT., DISTRICT OFFICE NO. 3, AND PAY A FEE TO THE COUNTY ENGINEER, ROOM 330, COUNTY ENGINEERING BUILDING, 100 WEST SECOND STREET ON CENTINELLA VALLEY PHILLES SEWER REGIONAL OFFICE, SUFFICIENT TO COVER THE COST OF CONSTRUCTION INSPECTION AND RECORD PLANS.  
 APPROVAL OF THIS PLAN BY THE COUNTY OF LOS ANGELES DOES NOT CONSTITUTE A REPRESENTATION AS TO THE ACCURACY OF THE LOCATION OF OR THE EXISTENCE OR NON-EXISTENCE OF ANY UNDERGROUND UTILITY PIPE, OR STRUCTURE WITHIN THE LIMITS OF THIS PROJECT. THIS NOTE APPLIES TO ALL PAGES.  
 IF WORK IS TO BE DONE IN A STATE HIGHWAY, A PERMIT MUST BE OBTAINED FROM THE STATE OF CALIFORNIA, DIVISION OF HIGHWAYS, 120 SOUTH SPRING STREET, LOS ANGELES, CALIFORNIA.

COUNTY OF LOS ANGELES, CALIFORNIA  
 JOHN A. LAMBIE, COUNTY ENGINEER  
 J. D. PARKHURST, CHIEF ENGINEER  
 CO. SAN. DIST. NO. 72  
 APPROVED BY: *R. S. K...* ASSISTANT SANITATION ENGINEER  
 APPROVED BY: *J. D. Parkhurst* OFFICE ENGINEER  
 SUBMITTED BY: *John C. Ramsey* REGIONAL ENGINEER  
 CHECKED BY: *S. E. W...* 12-11-63  
 REC. C. NO. 2466

J.N. 0359.63

- NOTES:
1. PROVIDE STAKES ON THE PROPERTY LINE OR PROPERTY LINES PRODUCED AT RIGHT ANGLES TO THE SEWER LINE AT THE CENTER LINE OF EACH MANHOLE.
  2. NO REPRESENTATIVE OF THE COUNTY ENGINEER WILL SURVEY OR LAY OUT ANY PORTION OF THE WORK.
  3. THE PRIVATE ENGINEER SHALL FURNISH THE COUNTY ENGINEER WITH GRADE SHEETS AND STATIONING FOR ALL HOUSE LATERALS AND Y BRANCHES AND SHALL PROVIDE STAKES FOR THEM AT THEIR PROPER LOCATIONS WITH STATIONING PLAINLY MARKED. ALL HOUSE LATERALS SHALL BE CONSTRUCTED IN A STRAIGHT ALIGNMENT AT RIGHT ANGLES FROM THE MAIN LINE SEWER EXCEPT AS SHOWN ON THE PLANS. HOUSE LATERALS FROM CHIMNEYS SHALL NOT HAVE AN ANGLE OF LESS THAN 45° WITH THE MAIN LINE SEWER. ANY CHANGE IN ALIGNMENT SHALL BE REQUESTED BY THE PRIVATE ENGINEER.
  4. THE PRIVATE ENGINEER SHALL FURNISH THE HOUSE LATERAL DEPTH AT THE PROPERTY LINE BELOW THE TOP OF CURB ELEVATION FOR EACH HOUSE LATERAL ON THE GRADE SHEET.
  5. NO REVISIONS SHALL BE MADE IN THESE PLANS WITHOUT THE APPROVAL OF THE COUNTY ENGINEER.
  6. THE CONTRACTOR SHALL NOTIFY THE CONSTRUCTION DIVISION BY TELEPHONE, MADISON 9-4747, EXT. 81551, AT LEAST TWENTY FOUR HOURS BEFORE STARTING ANY WORK UNDER THIS CONTRACT.
  7. MANHOLES SHALL BE BRICK SEWER STRUCTURES PER S-6-104. PRECAST CONCRETE MANHOLES PER S-6-155 OR S-6-173 MAY BE USED AS AN ALTERNATE IN LOCATIONS APPROVED BY THE COUNTY ENGINEER.
  8. USE STANDARDS MANHOLE FRAMES AND COVERS, S-6-177, EXCEPT AS NOTED.
  9. MANHOLE TOPS IN UNIMPROVED RIGHTS-OF-WAY TO BE SIX INCHES ABOVE FINISHED GRADE.
  10. USE EXTRA STRENGTH PIPE. ALL PIPE IS STANDARD DEPTH EXCEPT AS NOTED.
  11. USE MECHANICAL COMPRESSION JOINTS FOR ALL V.C.P. JOINTS PER SPECS., SECS. 34 & 48 & 49.
  12. WHERE THE CONTRACTOR HAS TO EXCAVATE THROUGH EXISTING UTILITY PIPES, THE CONTRACTOR SHALL BE RESPONSIBLE FOR THE PROTECTION AND REPAIR OF SUCH PIPES PER SPECS., SECS. 34 & 48 & 49.
  13. IF A POWER POLE IS WITHIN THREE FEET OF THE SEWER, THE SEWER SHALL BE ENCASED, PER S-6-173, CASE III, TWO FEET ON EACH SIDE FROM THE POINT OF INTERFERENCE.
  14. IF DURING THE COURSE OF CONSTRUCTION IT IS DETERMINED THAT THERE IS LESS THAN FOUR FEET OF COVER OVER THE TOP OF A MAIN LINE OR HOUSE LATERAL V.C.P. SEWER WHICH IS NOT INDICATED ON THE PLANS, THE PIPE SHALL BE ENCASED PER S-6-173, CASE III, UNLESS OTHERWISE APPROVED BY THE COUNTY ENGINEER.
  15. HOUSE LATERALS TO BE CONSTRUCTED WITH INVERTS AT PROPERTY LINE ..... FEET BELOW CURB GRADE EXCEPT AS NOTED.
  16. RESURFACE ALL TRENCHES WITHIN PAVED AREAS TO MEET L.A. COUNTY ROAD DEPT. OR CALIFORNIA STATE HIGHWAY REQUIREMENTS IN ACCORDANCE WITH PERMITS.
  17. FOR ALLOWABLE LEAKAGE TEST USE FORMULA NO. .... SPECS., SEC. 54.
  18. ALL STATE & LOCAL TRENCH SAFETY ORDERS WILL BE RIGIDLY ENFORCED.
  19. NO CONSTRUCTION WILL BE PERMITTED IN FILLED AREAS UNLESS ACCEPTABLE CERTIFICATION IS SUBMITTED TO CONSTRUCTION DIVISION OF THE COUNTY ENGINEERING DEPT. THAT RELATIVE COMPACTION IS GREATER THAN 80%.  
 (A) IF COMPACTION IS LESS THAN 90% THE SEWER MUST BE CRADLED AS SHOWN ON THE PLANS PER S-6-166 AND SPECIAL MANHOLE BASES CONSTRUCTED PER S-6-163.  
 (B) IF COMPACTION IS GREATER THAN 90% CRADLE IS NOT REQUIRED AND SPECIAL MANHOLE BASES ARE NOT REQUIRED.

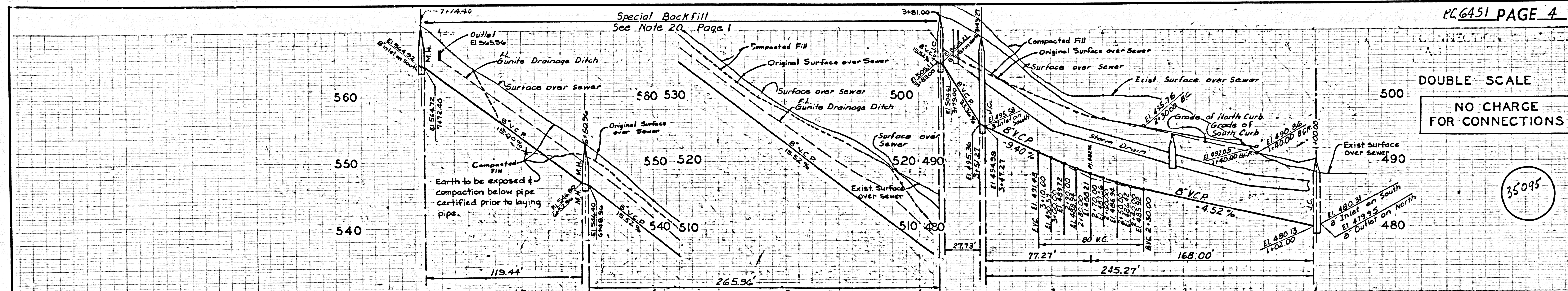
ISSUE NO PERMITS UNTIL  
 SEWER R/W HAS BEEN RECORDED  
 NO CHARGE FOR  
 CONNECTIONS  
*L. Curtis 11-8-63*

NO CONNECTIONS FOR THE DISPOSAL OF INDUSTRIAL WASTES SHALL BE MADE TO ANY SEWER ON THESE DRAWINGS WITHOUT WRITTEN PERMISSION FROM THE CHIEF ENGINEER AND GENERAL MANAGER OF THE COUNTY SANITATION DISTRICTS.

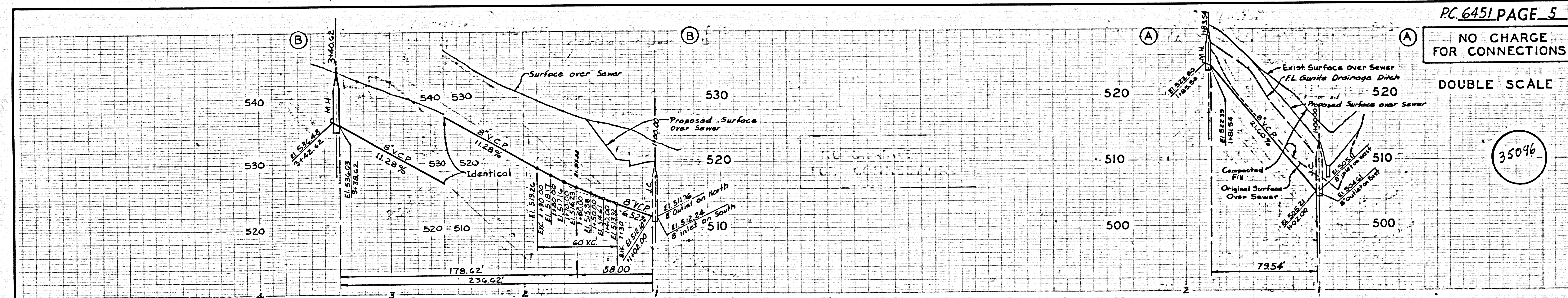
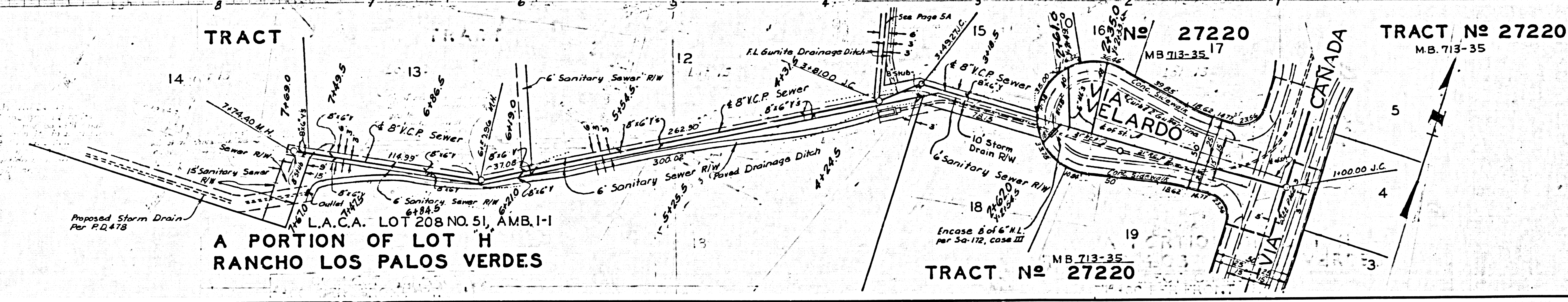




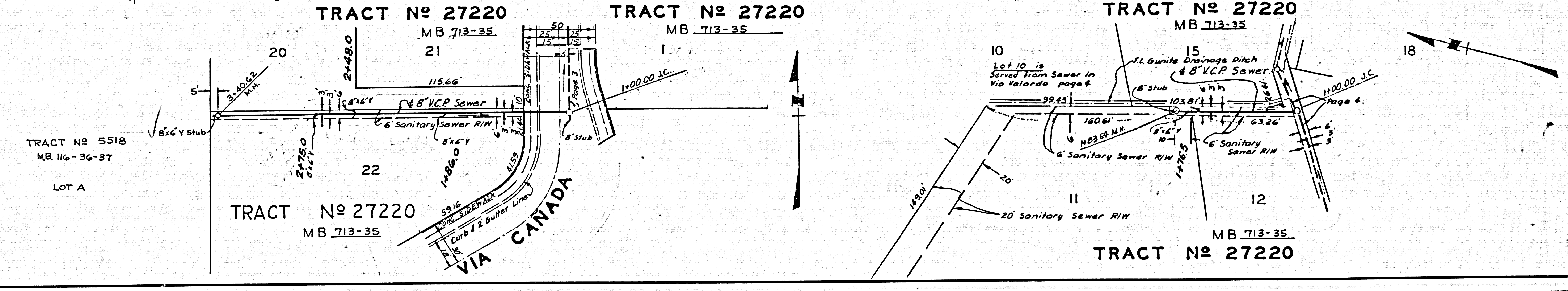




DOUBLE SCALE  
NO CHARGE FOR CONNECTIONS



DOUBLE SCALE  
NO CHARGE FOR CONNECTIONS



DOUBLE SCALE  
NO CHARGE FOR CONNECTIONS