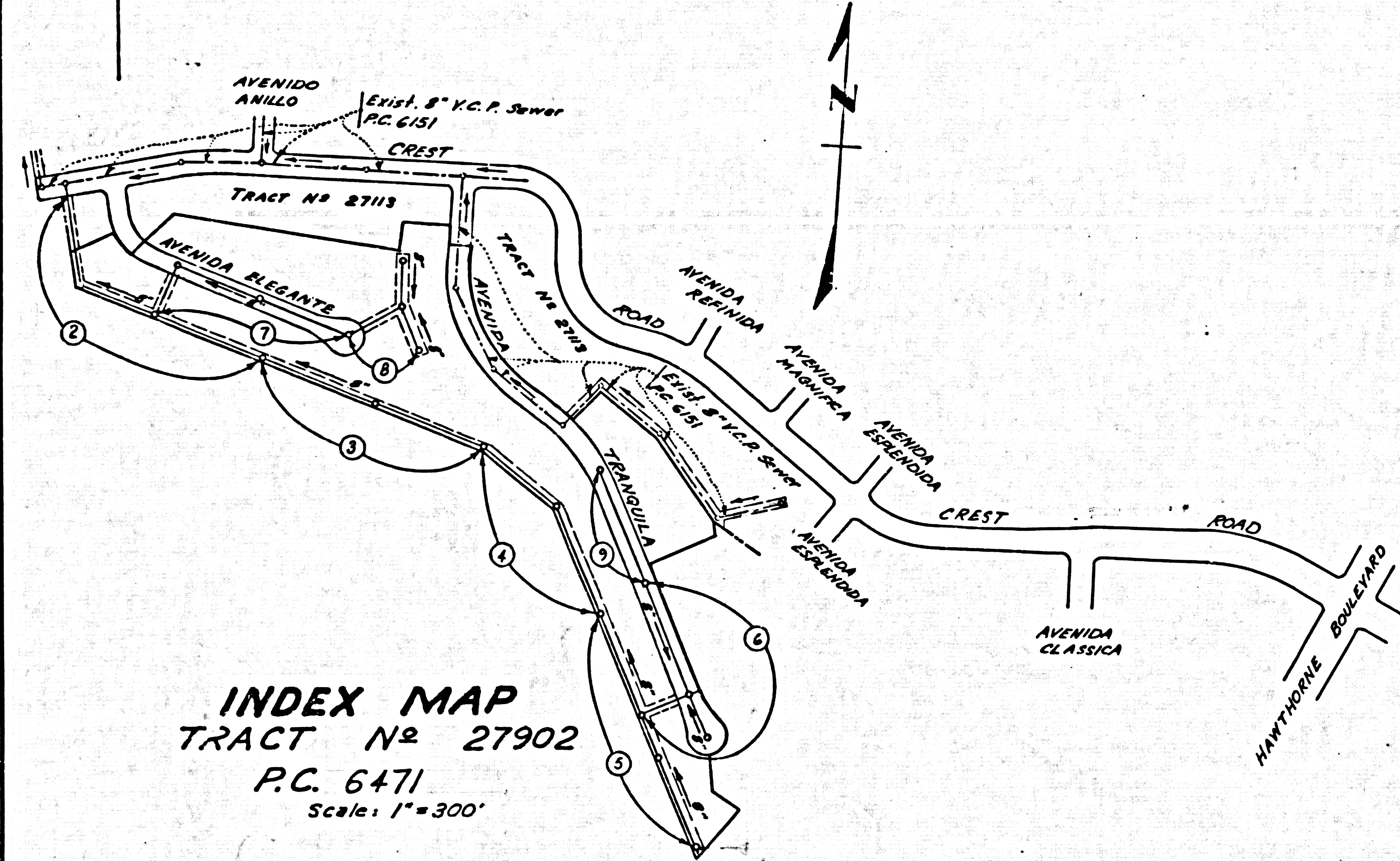


B.M. SY 4392-A RESEV ELEV. 931.686
 R.D. B.M. Tag in S. Ch. Crest Road ±2'
 E. C.B. opening ±40' S. Crest Road
 ±81' E. G.L. Hawthorne Blvd.
 PALOS VERDES QUAD. 1955.



INDEX MAP
 TRACT No 27902
 P.C. 6471
 Scale: 1" = 300'

DOUBLE SCALE
LOMITA BLDG. DIST. NO. 12

PROFILE ALIGNMENT AND GRADE OF **P.C. 6471**
SANITARY SEWERS PAGE 1
 TO BE CONSTRUCTED IN
TRACT No 27902

- NOTES:
1. PROVIDE STAKES ON THE PROPERTY LINE OR PROPERTY LINES PRODUCED AT RIGHT ANGLES TO THE SEWER LINE AT THE CENTER LINE OF EACH MANHOLE.
 2. NO REPRESENTATIVE OF THE COUNTY ENGINEER WILL SURVEY OR LAY OUT ANY PORTION OF THE WORK.
 3. THE PRIVATE ENGINEER SHALL FURNISH THE COUNTY ENGINEER WITH GRADE SHEETS AND STATIONING FOR ALL HOUSE LATERALS AND Y BRANCHES AND SHALL PROVIDE STAKES FOR THEM AT THEIR PROPER LOCATIONS WITH STATIONING PLAINLY MARKED. ALL HOUSE LATERALS SHALL BE CONSTRUCTED IN A STRAIGHT ALIGNMENT AT RIGHT ANGLES FROM THE MAIN LINE SEWER EXCEPT AS SHOWN ON THE PLANS. HOUSE LATERALS FROM CHIMNEYS SHALL NOT HAVE AN ANGLE OF LESS THAN 45° WITH THE MAIN LINE SEWER. ANY CHANGE IN ALIGNMENT SHALL BE REQUESTED IN WRITING BY THE PRIVATE ENGINEER.
 4. THE PRIVATE ENGINEER SHALL FURNISH THE HOUSE LATERAL DEPTH AT THE PROPERTY LINE BELOW THE TOP OF CURB ELEVATION FOR EACH HOUSE LATERAL ON THE GRADE SHEET.
 5. NO REVISIONS SHALL BE MADE IN THESE PLANS WITHOUT THE APPROVAL OF THE COUNTY ENGINEER.
 6. THE CONTRACTOR SHALL NOTIFY THE CONSTRUCTION DIVISION BY TELEPHONE, MADISON 9-4747, EXT. 8151, AT LEAST TWENTY-FOUR HOURS BEFORE STARTING ANY WORK UNDER THIS CONTRACT.
 7. MANHOLES SHALL BE BRICK SEWER STRUCTURES PER S-104-1964 PRECAST CONCRETE MANHOLES PER S-135 OR S-173 MAY BE USED AS AN ALTERNATE IN LOCATIONS APPROVED BY THE COUNTY ENGINEER.
 8. USE STANDARD MANHOLE FRAMES AND COVERS, S-117, EXCEPT AS NOTED.
 9. MANHOLE TOPS IN UNIMPROVED RIGHTS-OF-WAY TO BE SIX INCHES ABOVE FINISHED GRADE.
 10. USE EXTRA STRENGTH PIPE. ALL PIPE IS STANDARD DEPTH EXCEPT AS NOTED.
 11. USE ~~COMPRESSIBLE~~ MECHANICAL COMPRESSION JOINTS FOR ALL V.C.P. PER SPEC. SECS. 36 & 48 & 49.
 12. ~~WHEREVER THE CONTRACTOR IS REQUIRED TO CONSTRUCT THE SEWER LINE IN A STREET OR ALLEY OR ON A STATE HIGHWAY OR IN A PUBLIC PLACE, HE SHALL BE RESPONSIBLE FOR THE PROTECTION OF THE SAME AND FOR THE REPAIR OF THE SAME TO ORIGINAL CONDITION OR BETTER.~~
 13. IF A POWER POLE IS WITHIN THREE FEET OF THE SEWER, THE SEWER SHALL BE ENCASED, PER S-172, CASE III, TWO FEET ON EACH SIDE FROM THE POINT OF INTERFERENCE.
 14. IF DURING THE COURSE OF CONSTRUCTION IT IS DETERMINED THAT THERE IS LESS THAN FOUR FEET OF COVER OVER THE TOP OF A MAIN LINE OR HOUSE LATERAL V.C.P. SEWER WHICH IS NOT INDICATED ON THE PLANS, THE PIPE SHALL BE ENCASED PER S-172, CASE III, UNLESS OTHERWISE APPROVED BY THE COUNTY ENGINEER.
 15. HOUSE LATERALS TO BE CONSTRUCTED WITH INVERTS AT PROPERTY LINE... FEET BELOW CURB GRADE EXCEPT AS NOTED.
 16. RESURFACE ALL TRENCHES WITHIN PAVED AREAS TO MEET L.A. COUNTY ROAD DEPT. OR CALIFORNIA STATE HIGHWAY REQUIREMENTS IN ACCORDANCE WITH PERMITS.
 17. FOR ALLOWABLE LEAKAGE TEST USE FORMULA NO. 2, SPEC. SEC. 54.
 18. ALL STATE AND LOCAL TRENCH SAFETY ORDERS WILL BE RIGIDLY ENFORCED.
 19. **NO CONSTRUCTION WILL BE PERMITTED IN FILLED AREAS UNLESS CERTIFICATION IS SUBMITTED TO THE CONSTRUCTION DIVISION OF THE COUNTY ENGINEER'S DEPARTMENT THAT COMPACTION IS GREATER THAN 90%.**
 20. **IF COMPACTION IS LESS THAN 90% THE SEWER MUST BE CRADLED AND SPECIAL M.H. BASES CONSTRUCTED AS SHOWN ON PLANS, PARAGRAPHS 3 & 4.**
 21. **IF COMPACTION IS GREATER THAN 90% CRADLING AND SPECIAL M.H. BASES ARE NOT REQUIRED.**

W.S. 27
 5 SHEETS, 9 PAGES
 SCALE: VERT. 1" = 4' - January 24, 1963
 HORIZ. 1" = 40'
 PREPARED IN THE OFFICES OF
 Development Consultants, Inc.
 1000 E. Colorado Blvd. Pasadena, California
 REG. C. E. NO. 3953
 FOR LEGEND SEE PLAN NO. S-64

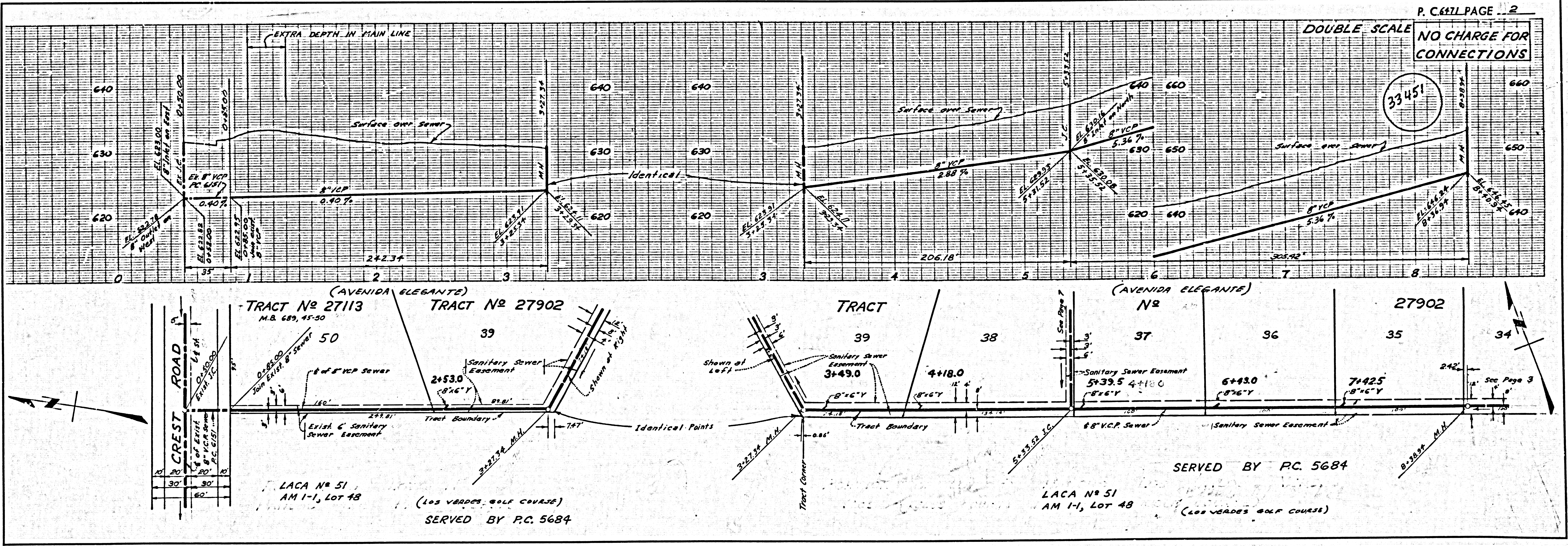
NOTE:
 GRADES TO WHICH THIS IMPROVEMENT IS TO BE CONSTRUCTED ARE SHOWN ON PLANS AND PROFILES. GRADE POINTS FOR TOP OF CURBS, CENTER LINE OF STREETS, OR CENTER LINE OF ALLEYS ARE SHOWN BY CIRCLES ON PROFILES. AT ALL POINTS BETWEEN DESIGNATED POINTS THE GRADE SHALL BE ESTABLISHED SO AS TO CONFORM TO A STRAIGHT LINE DRAWN BETWEEN SAID DESIGNATED POINTS. ELEVATIONS ARE IN FEET ABOVE U.S.C. & G.S. SEA LEVEL DATUM OF 1929. THIS DRAWING AND THE DATA HEREON ARE HEREBY MADE A PART OF THE SPECIFICATIONS. WORK SHALL BE CONSTRUCTED ACCORDING TO STANDARD SPECIFICATIONS DATED MAY 25, 1962 ON FILE IN THE OFFICE OF THE COUNTY ENGINEER AND SHALL BE PROSECUTED ONLY IN THE PRESENCE OF THE COUNTY ENGINEER. BEFORE WORK CAN BE STARTED, THE CONTRACTOR MUST OBTAIN A PERMIT TO EXCAVATE IN COUNTY STREETS FROM THE L.A. COUNTY ROAD DEPT., DISTRICT OFFICE NO. 3, AND PAY A FEE TO THE COUNTY ENGINEER, ROOM 300, COUNTY ENGINEER'S BUILDING, 108 WEST SECOND STREET OR PALOS VERDES - CENTINELA VALLEY REGIONAL OFFICE, SUFFICIENT TO COVER THE COST OF CONSTRUCTION INSPECTION AND RECORD PLANS. APPROVAL OF THIS PLAN BY THE COUNTY OF LOS ANGELES DOES NOT CONSTITUTE A REPRESENTATION AS TO THE ACCURACY OF THE LOCATION OR OF THE EXISTENCE OR NON-EXISTENCE OF ANY UNDERGROUND UTILITY PIPE, OR STRUCTURE WITHIN THE LIMITS OF THIS PROJECT. THIS NOTE APPLIES TO ALL PAGES. IF WORK IS TO BE DONE IN A STATE HIGHWAY, A PERMIT MUST BE OBTAINED FROM THE STATE OF CALIFORNIA, DIVISION OF HIGHWAYS, 100 SOUTH SPRING STREET, LOS ANGELES, CALIFORNIA.

COUNTY OF LOS ANGELES, CALIFORNIA
 JOHN A. LAMBIE, COUNTY ENGINEER
 J. D. PARKHURST, CHIEF ENGINEER
 CO. SAN. DIST. NO. 12
 APPROVED BY *[Signature]* ASSISTANT SANITATION ENGINEER
 APPROVED BY *[Signature]* OFFICE ENGINEER
 SUBMITTED BY *[Signature]* REGIONAL ENGINEER
 CHECKED BY *[Signature]* REG. C. E. NO. 3446

COLLECT CHARGES AS INDICATED
[Signature]

NO CONNECTIONS FOR THE DISPOSAL OF INDUSTRIAL WASTES SHALL BE MADE TO SEWERS SHOWN ON THESE DRAWINGS WITHOUT WRITTEN PERMISSION FROM THE CHIEF ENGINEER AND GENERAL MANAGER OF THE COUNTY SANITATION DISTRICTS.

J.N. 0359.74



DOUBLE SCALE
NO CHARGE FOR CONNECTIONS

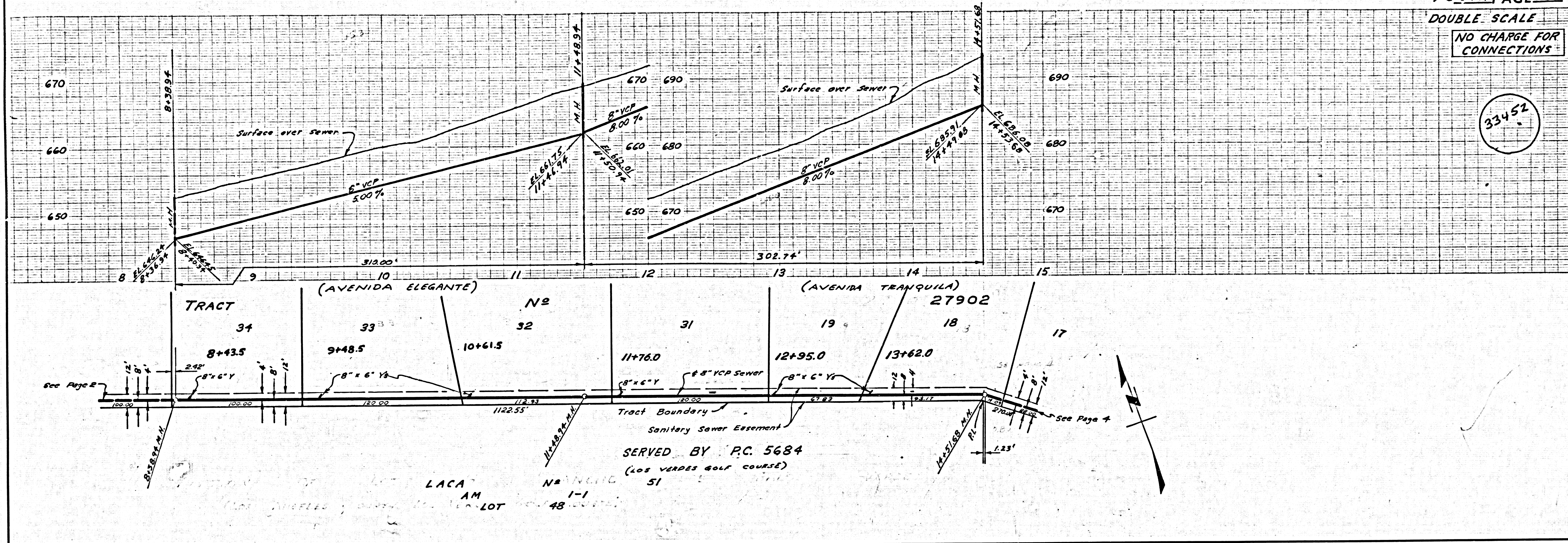
33451

SERVED BY P.C. 5684

LACA No 51
 AM 1-1, LOT 48
 (LOS VERDES GOLF COURSE)

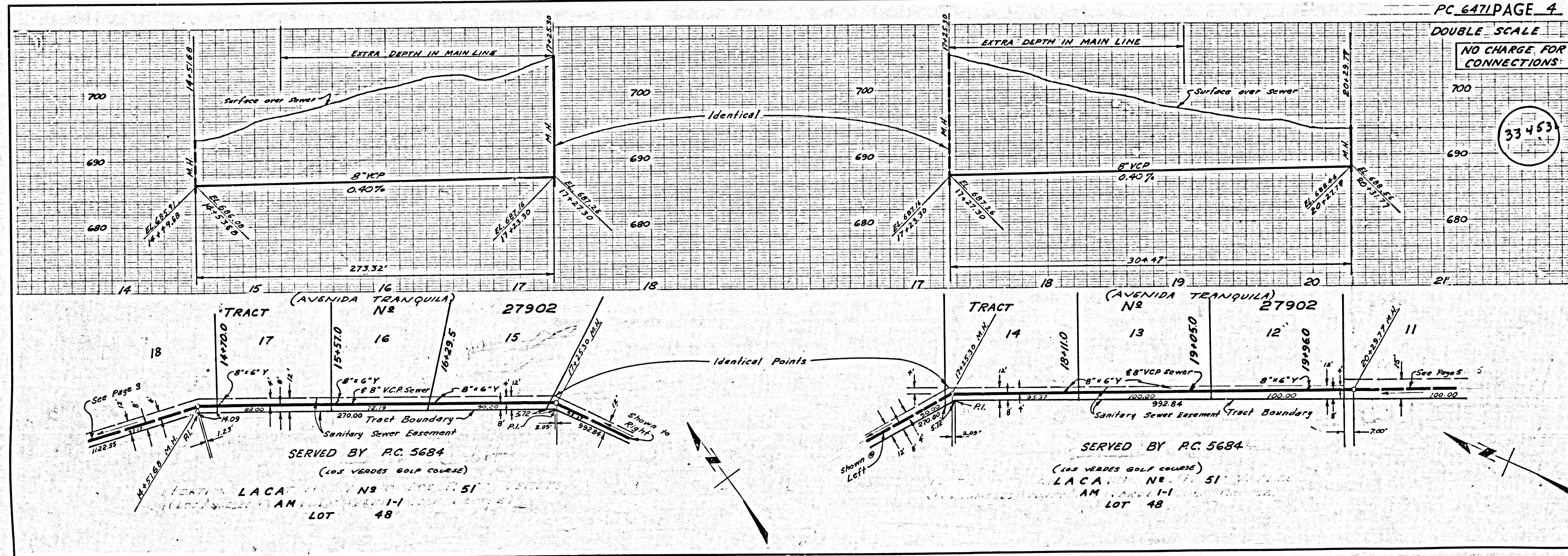
NO CHARGE FOR CONNECTIONS

33452



NO CHARGE FOR CONNECTIONS

33453

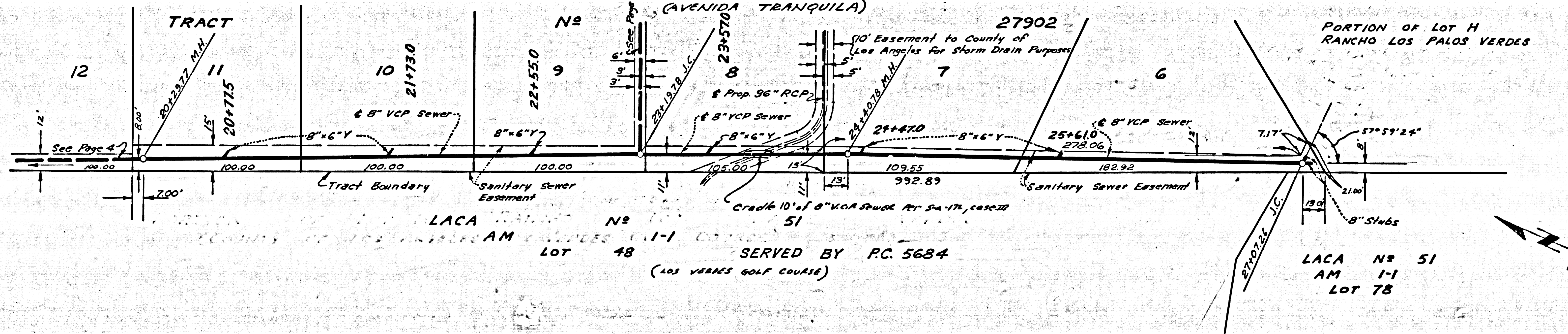
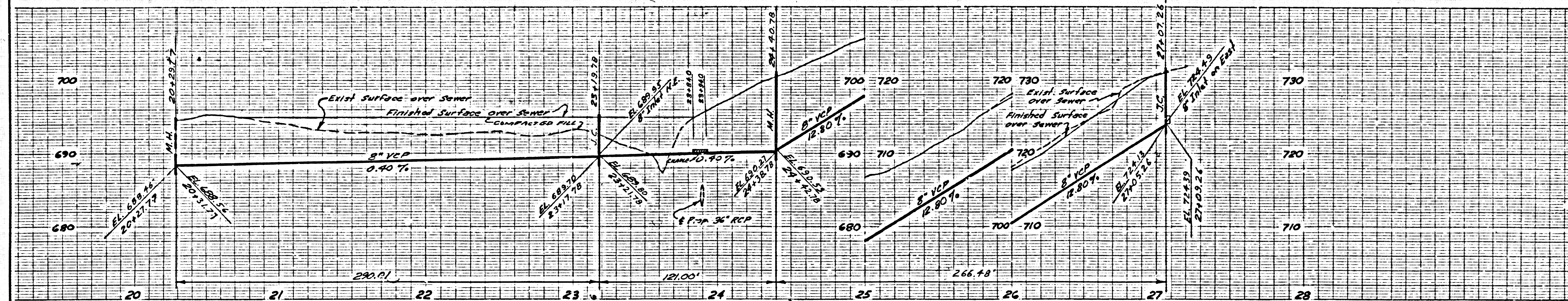


5

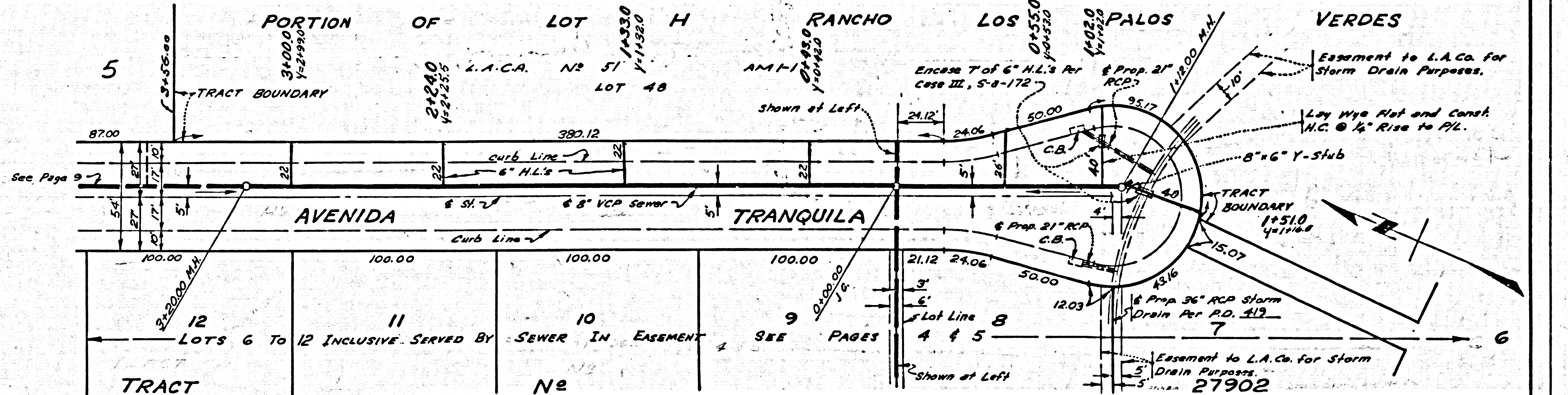
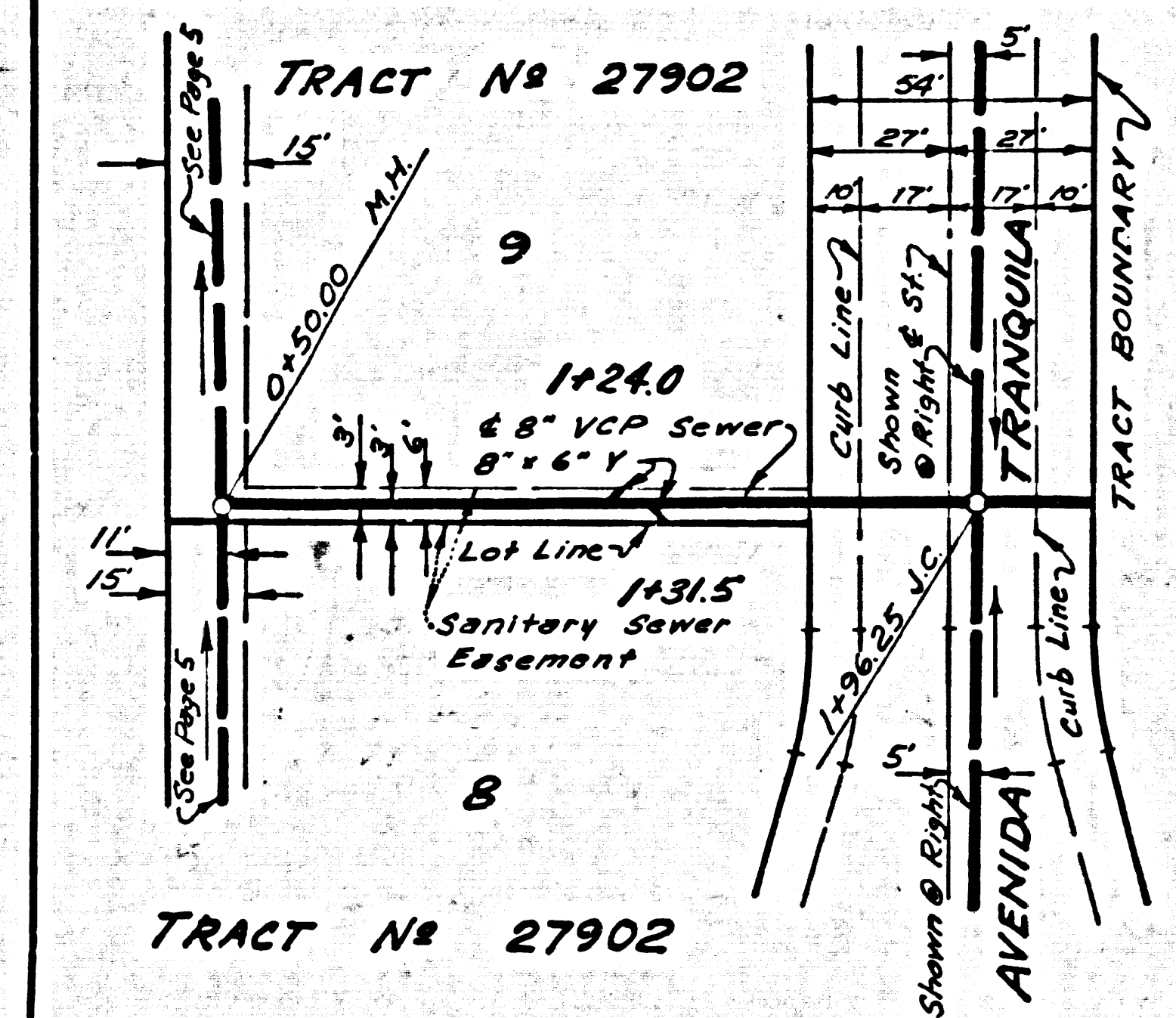
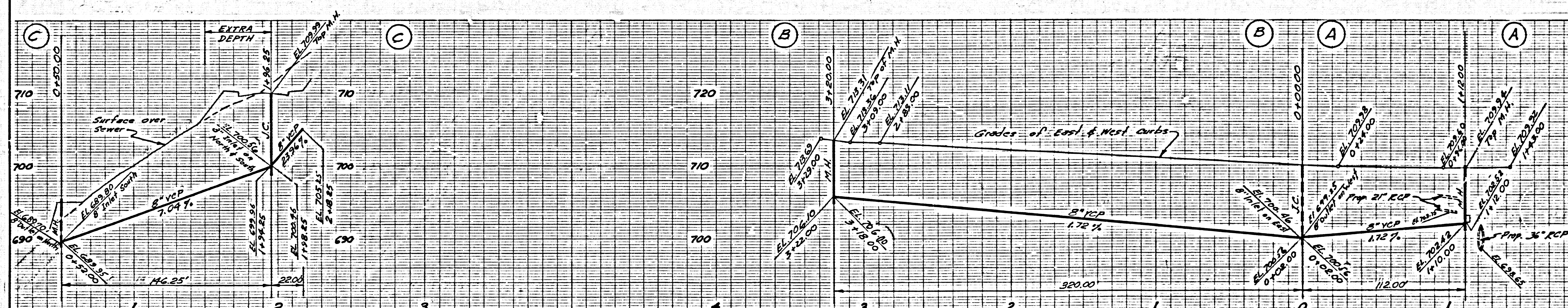
1792-54

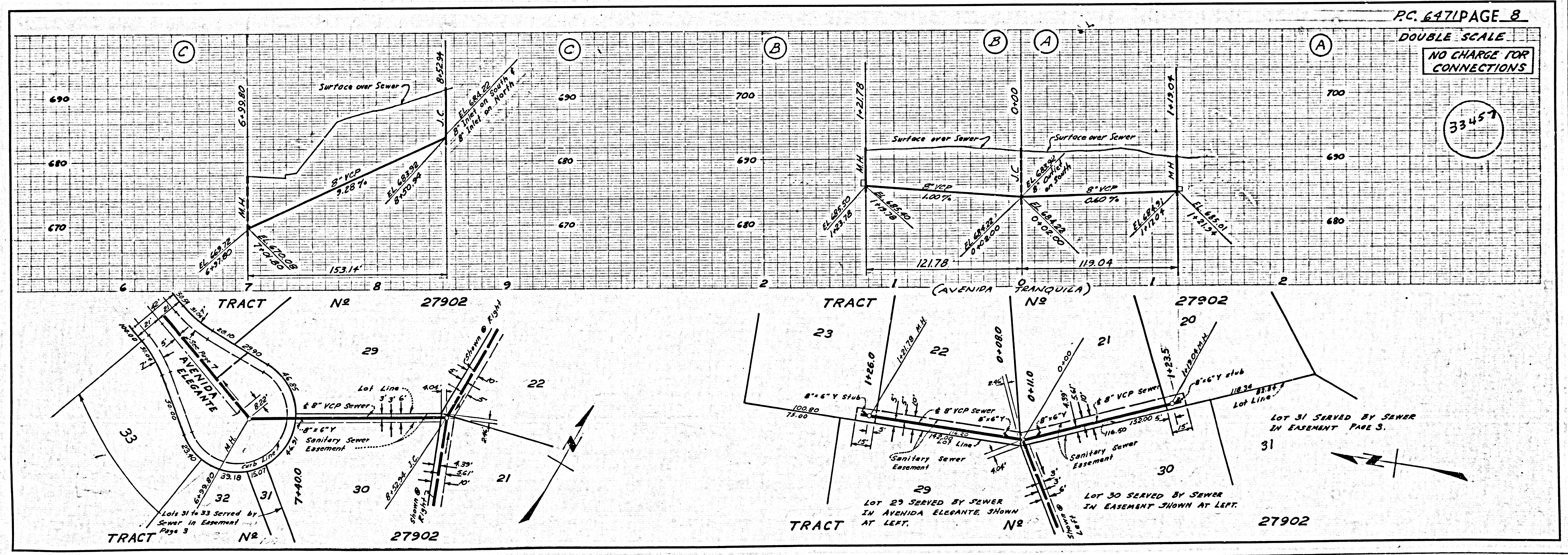
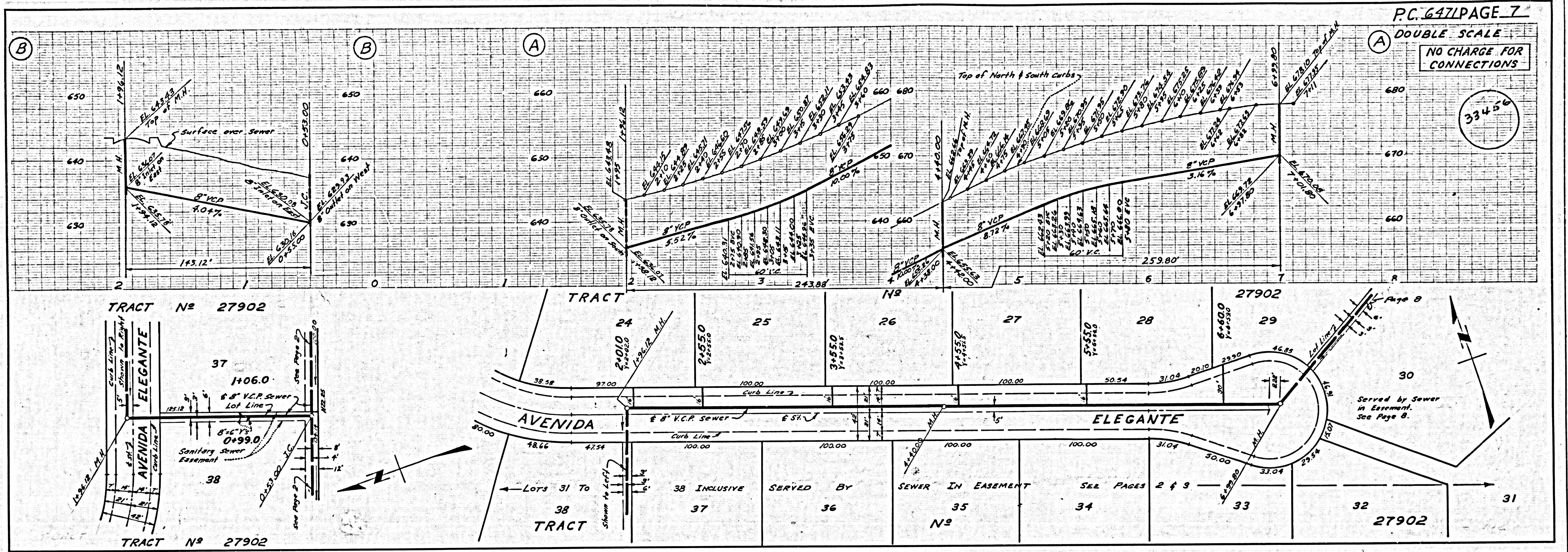
5085-501-1-1

33454



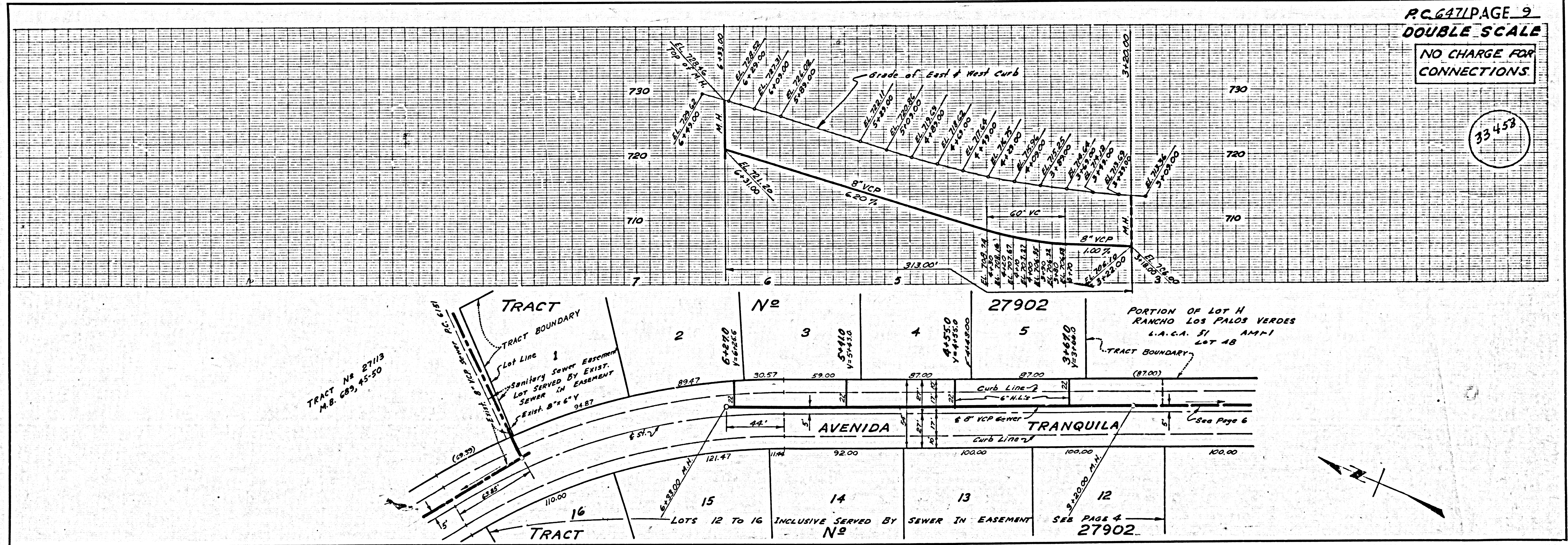
33455





PC 647/PAGE 9
 DOUBLE SCALE
 NO CHARGE FOR CONNECTIONS

33453



TRACT No 27113
 M.B. 683, 45-50

TRACT No 27902
 Lot Line 1
 Sanitary Sewer Easement
 LOT SERVED BY EXIST.
 SEWER IN EASEMENT
 EXIST. 8" x 6" V
 94.87

PORTION OF LOT H
 RANCHO LOS PALOS VERDES
 L.A.C.A. 51 AM-1
 LOT 48

LOTS 12 TO 16 INCLUSIVE SERVED BY SEWER IN EASEMENT
 No 27902