

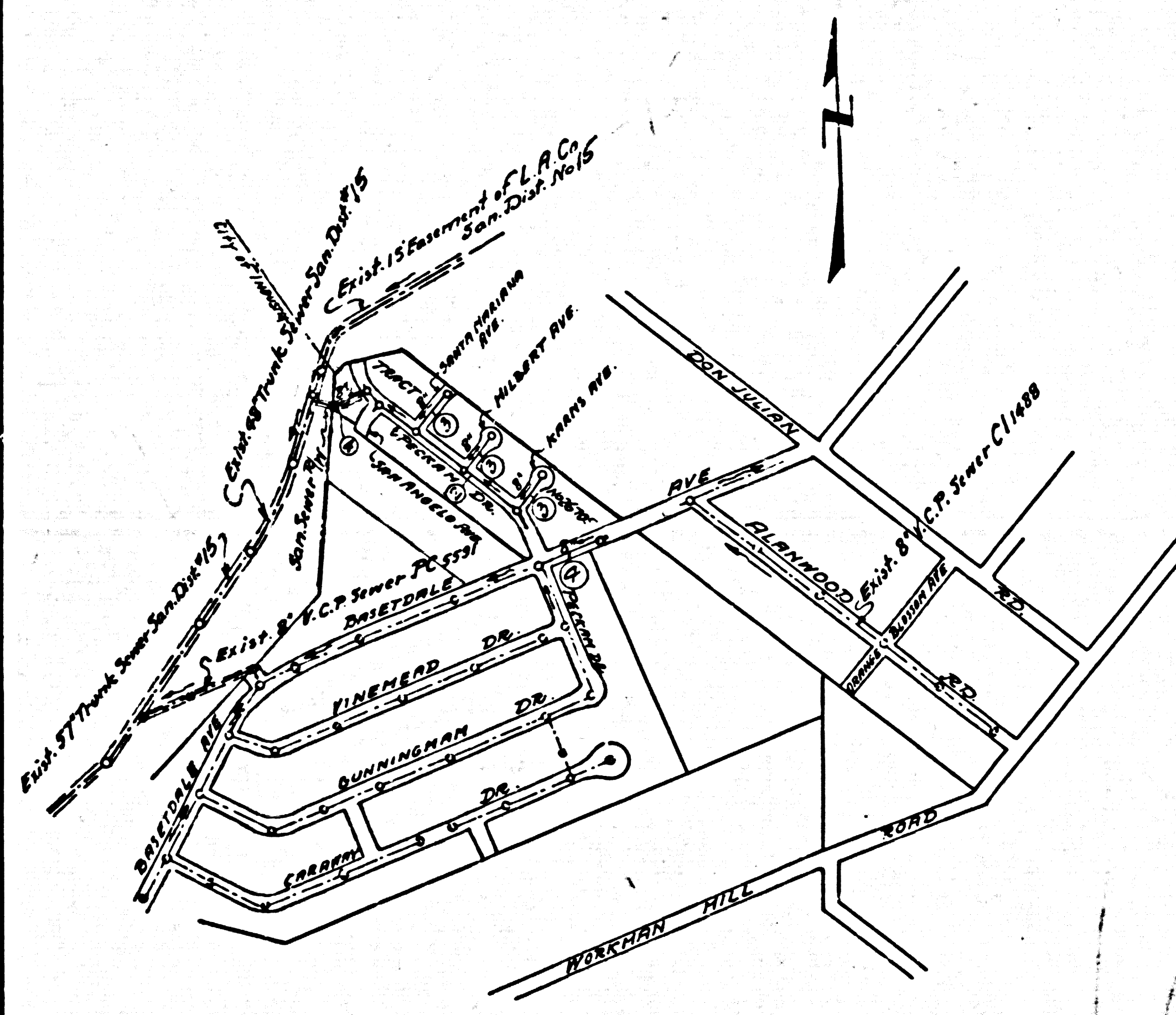
LA PUENTE BLDG. DIST. NO. 2

PROFILE ALIGNMENT AND GRADE OF P.C. 6476
 SANITARY SEWERS PAGE 1
 TO BE CONSTRUCTED IN JN 0359.78
 TRACT NO 26705

PRIVATE CONTRACT NO. 6476

W.S. 37
 2 SHEETS, 4 PAGES
 SCALE: VERT. 1"=4'
 HORIZ. 1"=40'
 MAY 1963
 PREPARED IN THE OFFICES OF

H. L. CREST ENGINEERING CORPORATION
 BY: *Harold H. Fonglet*
 REG. C. E. NO. 10222
 FOR LEGEND SEE PLAN NO. S-A-64



INDEX MAP
 Scale: 1"=600'
 TRACT NO 26705
 P.C. 6476
 Numbers in Circles denote Page Numbers

B.M. No 11-121 Elev. 338.928 C.S.F.B. 1376 Pg. 108
 Workman Mill Rd. and Lomita Ave.
 A Std. County Surv. Mon. in a Well Marked
 B.M. 11-121 R.F. 63, 11' So. of the E Workman
 Mill Rd. and 5' W of E Lomita Ave.
 Baseline Quod 1955 adj

ISSUE NO H.C. PERMITS FOR LOTS
 17, 18 & 19 UNTIL P.C. 5591
 IS ACCEPTED.

ISSUE NO CONSTRUCTION
 PERMIT UNTIL P.W. IS
 CLEARED.

NO CONNECTIONS FOR THE DISPOSAL OF
 INDUSTRIAL WASTES SHALL BE MADE TO
 SEWERS SHOWN ON THESE DRAWINGS
 WITHOUT WRITTEN PERMISSION FROM THE
 CHIEF ENGINEER AND GENERAL MANAGER
 OF THE COUNTY SANITATION DISTRICTS.

CONTRACTOR IS TO NOTIFY SOUTHERN CALIFORNIA GAS
 COMPANY PRIOR TO STARTING ANY WORK ON
 THIS PROJECT.
 CALL DISPATCHER MA. 5-3211 EXT. 2236

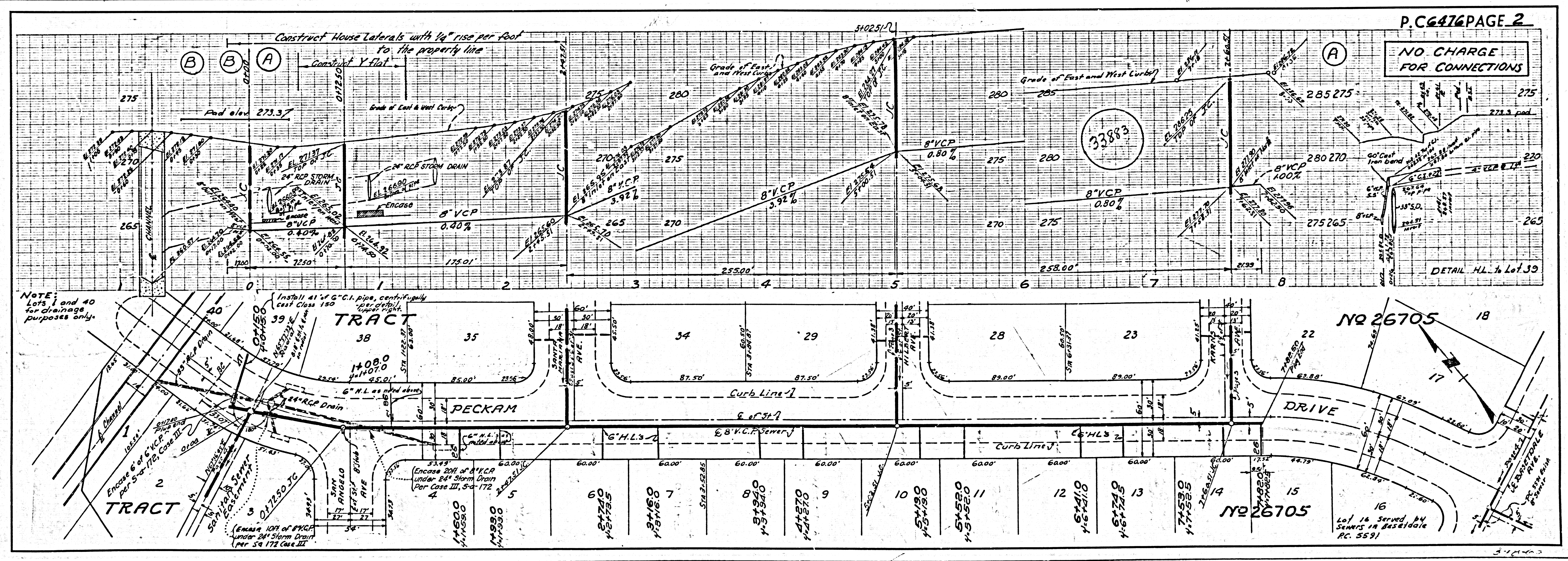
- NOTES:
1. PROVIDE STAKES ON THE PROPERTY LINE OR PROPERTY LINES PRODUCED AT RIGHT ANGLES TO THE SEWER LINE AT THE CENTER LINE OF EACH MANHOLE.
 2. NO REPRESENTATIVE OF THE COUNTY ENGINEER WILL SURVEY OR LAY OUT ANY PORTION OF THE WORK.
 3. THE PRIVATE ENGINEER SHALL FURNISH THE COUNTY ENGINEER WITH GRADE SHEETS AND STATIONING FOR ALL HOUSE LATERALS AND Y BRANCHES AND SHALL PROVIDE STAKES FOR THEM AT THEIR PROPER LOCATIONS WITH STATIONING PLAINLY MARKED. ALL HOUSE LATERALS SHALL BE CONSTRUCTED IN A STRAIGHT ALIGNMENT AT RIGHT ANGLES FROM THE MAIN LINE SEWER EXCEPT IN A SITUATION AS NOTED.
 4. House laterals from driveways shall not have an angle of less than 45° with the main line sewer. Any change in alignment shall be requested in writing by the private engineer.
 5. The private engineer shall furnish the house lateral depths at the property line before the top of curb elevation for each house lateral on the grade sheet.
 6. No revisions shall be made in these plans without the approval of the County Engineer.
 7. The contractor shall notify his construction division by telephone, Madison 9-8797, Ext. 8159, at least twenty-four hours before starting any work under this contract.
 8. Manholes shall be brick sewer structures per S-a-106. Precast concrete manholes per S-a-135 or S-a-173 may be used as an alternate in locations approved by the County Engineer, except as noted.
 9. Use standard manhole frames and covers, S-a-117, except as noted.
 10. Manhole tops in unimproved rights-of-way to be six inches above finished grade.
 11. Use extra strength pipe. All pipe is standard depth, EXCEPT AS NOTED.
 12. Use mechanical compression joints for all M.C.P. joints per Specs. Sec. 56.46 & 49.
 13. SPECIFICATIONS DATED MAY 25, 1962 APPLY IN THE CONSTRUCTION OF THIS PROJECT.
 14. If a power pole is within three feet of the sewer, the sewer shall be encased, per S-a-172, case III, two feet on either side from the point of interference.
 15. If during the course of construction it is determined that there is less than four feet of cover over the top of a main line or house lateral M.C.P. sewer which is not indicated on the plans, the pipe shall be encased per S-a-172, Case III, unless otherwise approved by the County Engineer.
 16. House laterals to be constructed with inverts at property line 6 feet below curb grade except as noted.
 17. Resurface all trenches within paved areas to meet L.A. County Road Dept. or Calif. State Highway requirements in accordance with permits.
 18. For allowable leakage test use formula No. 2, Specs. Sec. 57.
 19. All State and local trench safety orders will be rigidly enforced.

BEFORE BREAKING INTO ANY EXISTING STRUCTURE
 AND BEFORE FINAL ACCEPTANCE OF THIS WORK,
 COUNTY SANITATION DISTRICT (DU 4-1281) SHALL
 BE NOTIFIED IN ORDER THAT REQUIRED INSPEC-
 TION CAN BE MADE.

REVISION 5-23-63
 1. Removed C.L.P. note to M.C.P. 4 3/4" x 4 3/4" 1120 P.C.E.
 2. Moved SMN to 5 1/2" x 7 1/2" x 5 1/2" x 7 1/2" 1123 P.C.E.
 3. Changed rate of grade of 0.80% & 0.80% from 5 1/2" x 7 1/2" to 4 1/2" x 4 1/2" 1123 P.C.E.
 Approved: *John W. Kuegel*

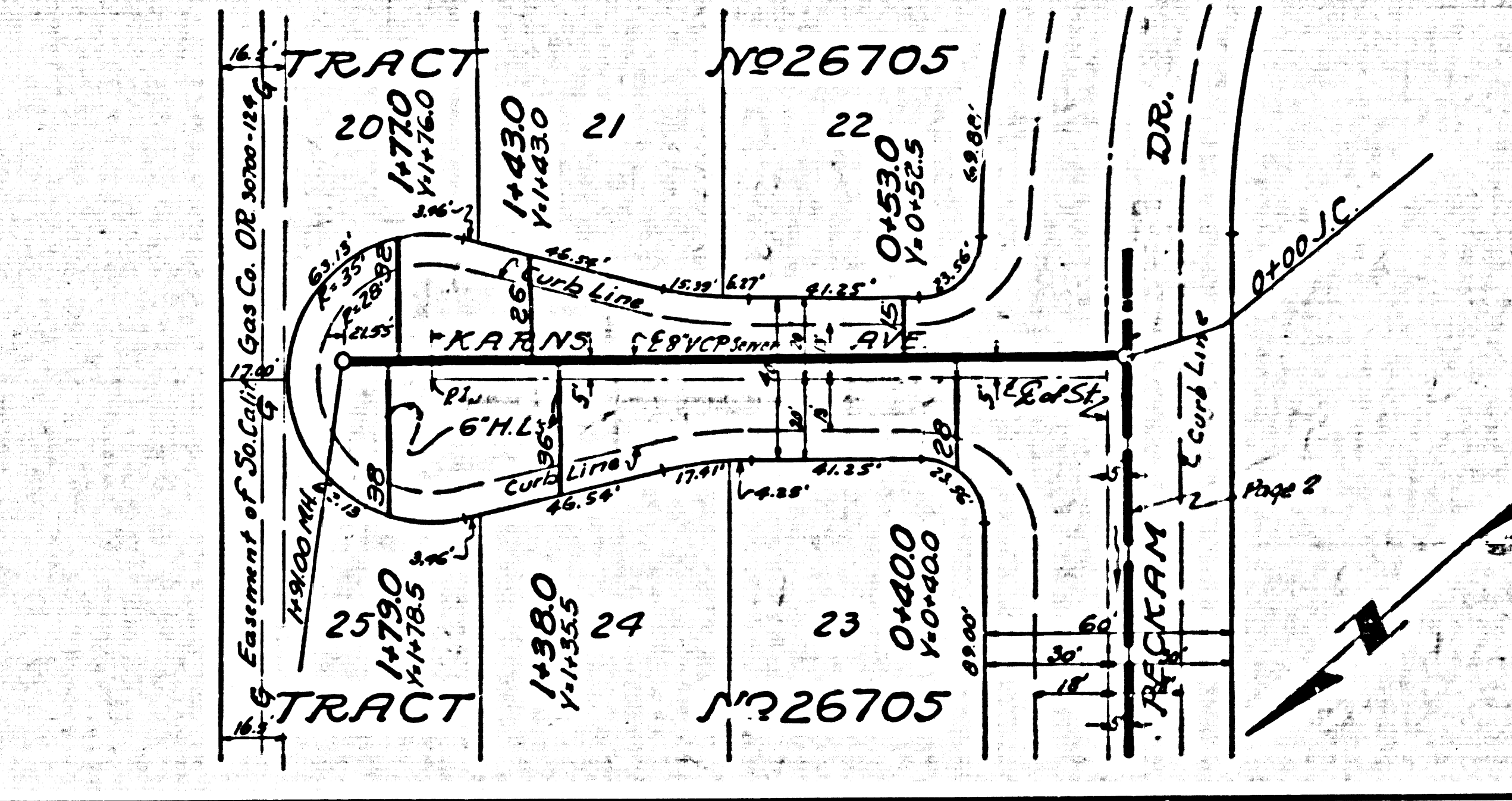
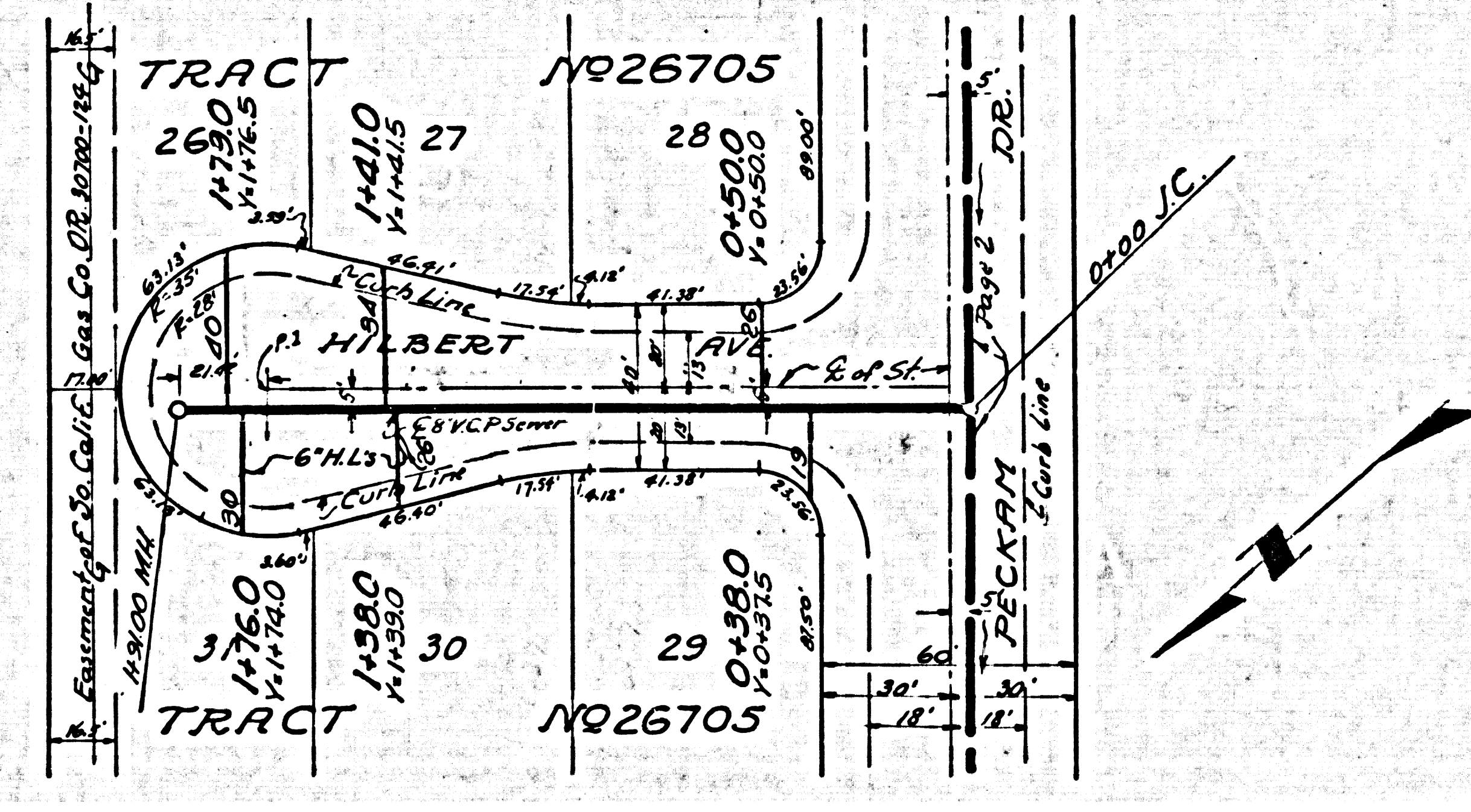
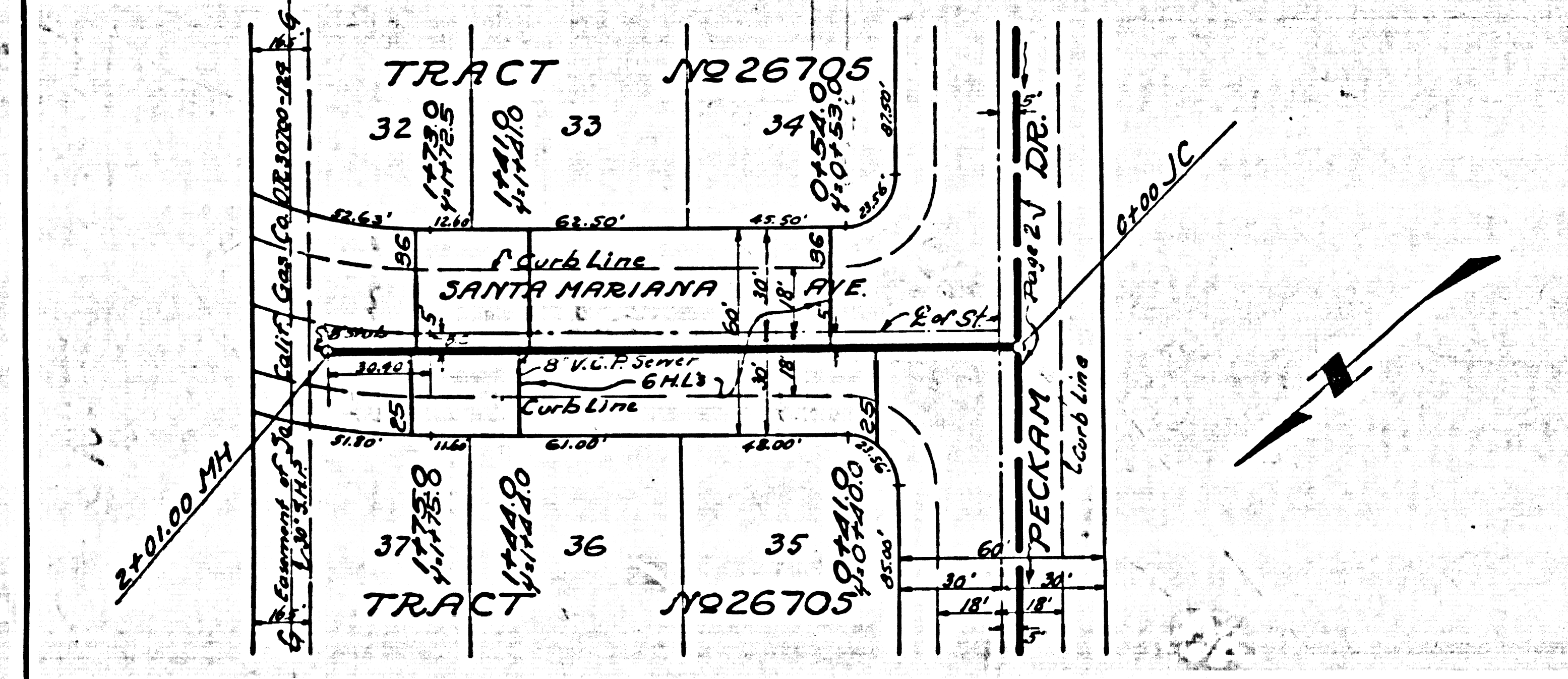
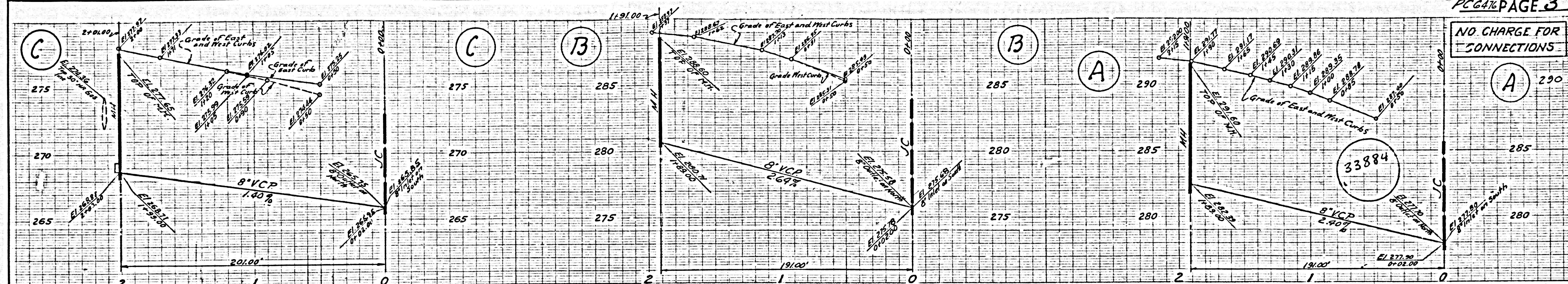
COLLECT CHARGES
 AS INDICATED
Ronald R. Olson

APPROVED, JOHN A. LAMBIE, COUNTY ENGINEER
 APPROVED, J.D. RECHNER, CHIEF ENGINEER
 CO. SAN. DIST. NO. 15
 BY: *John E. Kelly* ASST. SANITATION ENGINEER
 OFFICE ENGINEER
 CHECKED BY: *Harvey Lee* 5-22-63
 OFFICE OF COUNTY ENGINEER, REG. C. E. NO. 10443
 SUBMITTED: *John W. Kuegel* SAN DIMAS REGIONAL ENGINEER

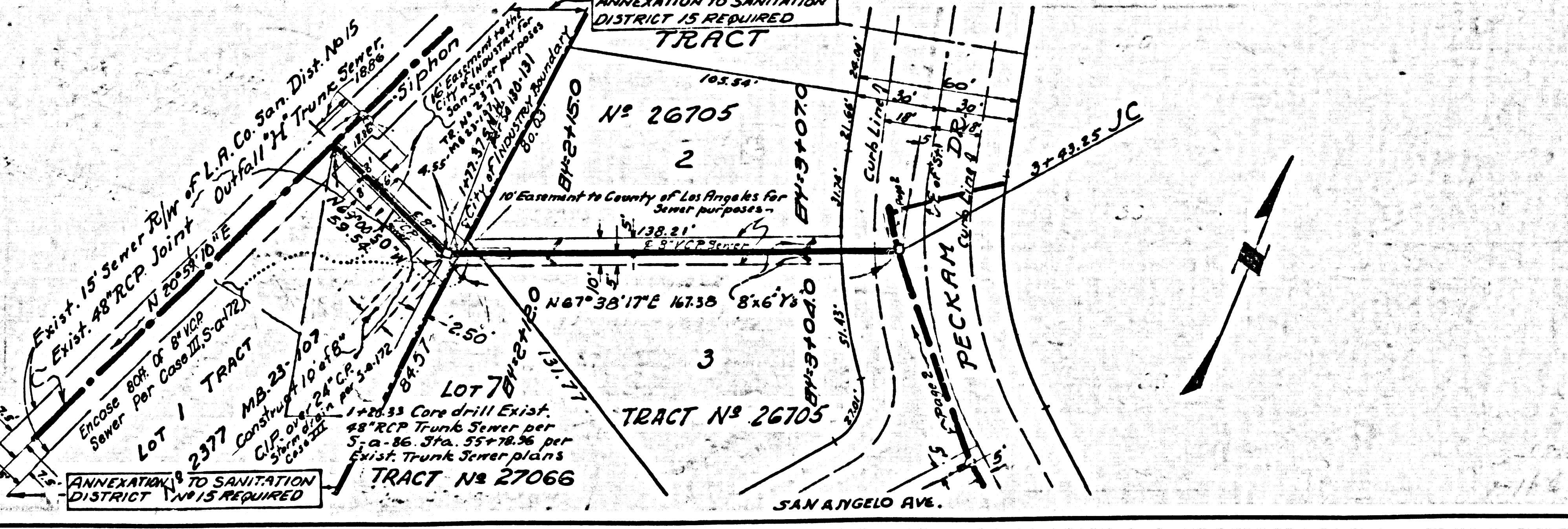
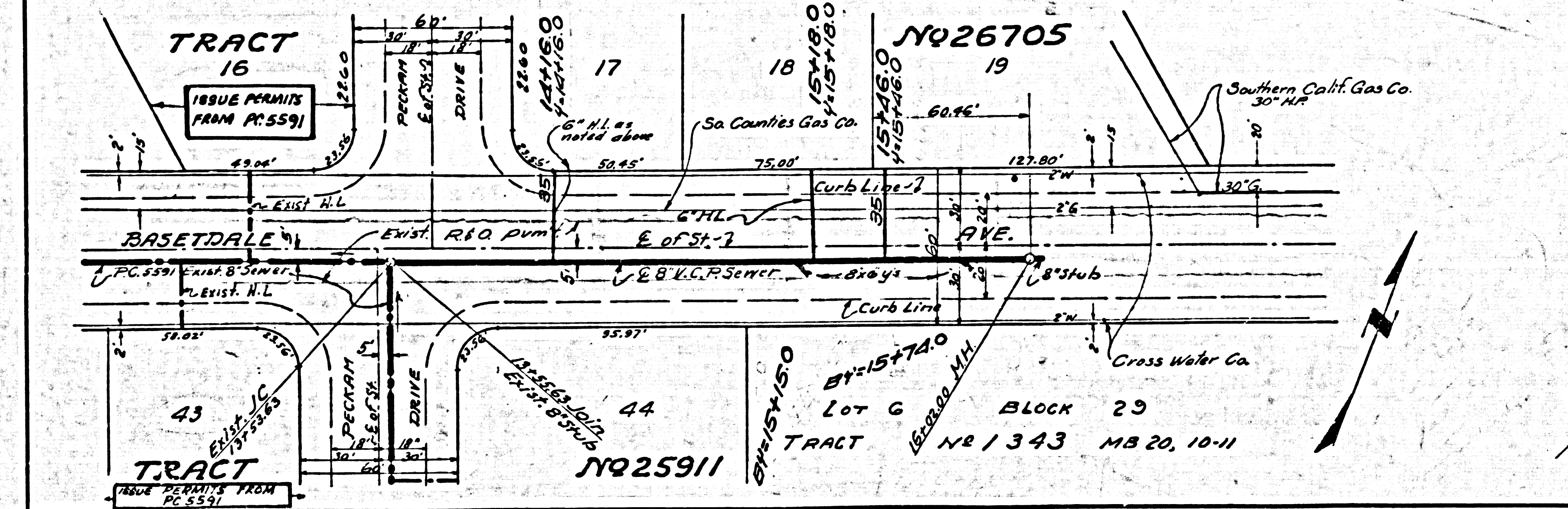
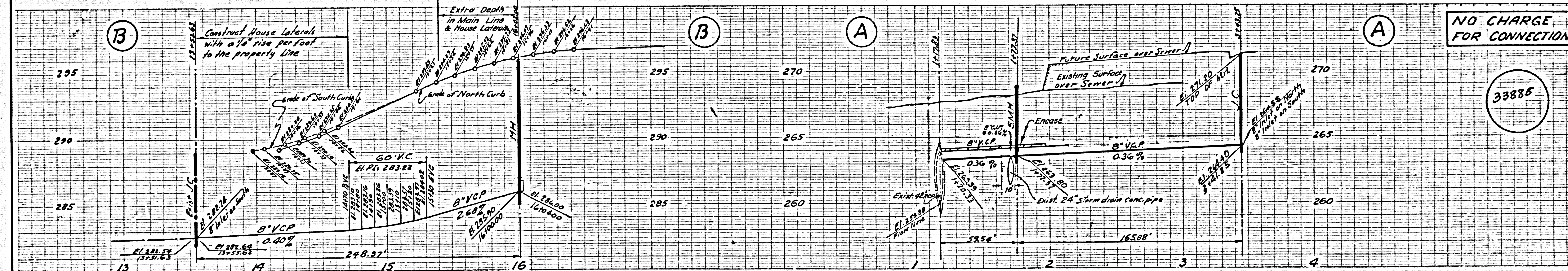


NOTE:
 Lots 1 and 40
 for drainage
 purposes only.

NO CHARGE FOR CONNECTIONS



NO CHARGE FOR CONNECTIONS



150011655502-00-0350