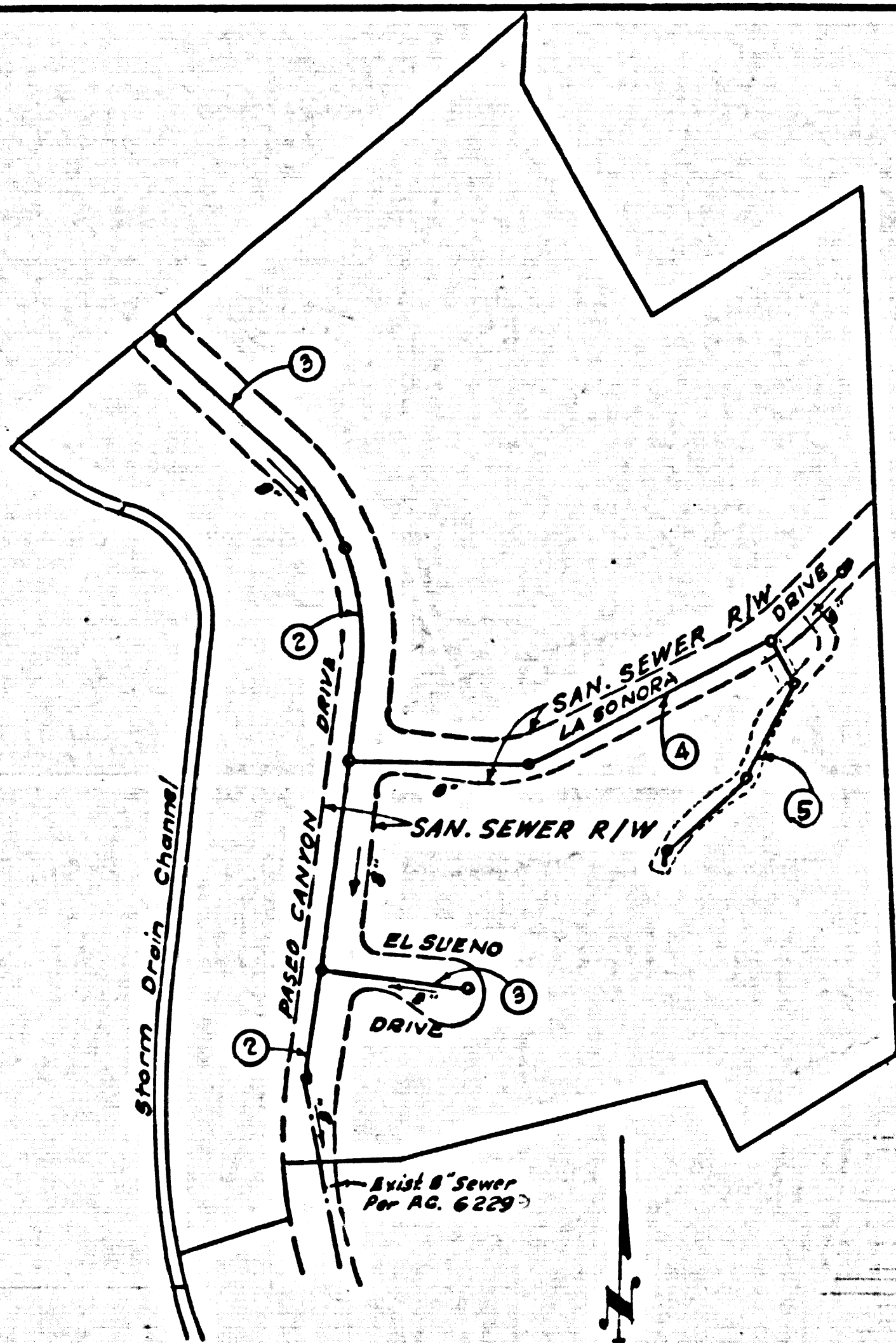


BENCH MARK 48-136 ELEV. 18507
 (U.S. 1314) (U.S.C. E 03 Resat "USGS")
 Pacific Coast Highway of Transco Canyon at the
 West End of the South Sidewalk on Highway
 Bridge No. 59-27, a Cooperative USGS, State
 and County Survey Disk, Stamped "R-49"
 Reaset 1938.
 R.S. 1869 Pg. 114 1964 Adj.



INDEX MAP
 Scale 1" = 200'
 TRACT NO. 26957
 P.C. 6479

DOUBLE SCALE
 MALIBU BLDG. DIST. NO. 9.2

PROFILE ALIGNMENT AND GRADE OF P.C. 6479
 SANITARY SEWERS PAGE 1

TO BE CONSTRUCTED IN
 TRACT No. 26957

PRIVATE CONTRACT NO. 6479

W.S. 95
 3 SHEETS; 5 PAGES
 SCALE: VERT. 1" = 4' FEB. 1965
 HORIZ. 1" = 40'
 PREPARED IN THE OFFICES OF
 AMCO ENGINEERS
 8244 W. OLYMPIC BLVD. B.H.

37464

REG. C. E. NO. 11467
 FOR LEGEND SEE PLAN NO. S-1

- NOTES:
- PROVIDE STAKES ON THE PROPERTY LINE OR PROPERTY LINES PRODUCED AT RIGHT ANGLES TO THE SEWER LINE AT THE CENTER LINE OF EACH MANHOLE.
 - NO REPRESENTATIVE OF THE COUNTY ENGINEER WILL SURVEY OR LAY OUT ANY PORTION OF THE WORK.
 - THE PRIVATE ENGINEER SHALL FURNISH THE COUNTY ENGINEER WITH GRADE SHEETS AND STATIONING FOR ALL HOUSE LATERALS AND Y BRANCHES AND SHALL PROVIDE STAKES FOR THEM AT THEIR PROPER LOCATIONS WITH STATIONING PLAINLY MARKED. HOUSE LATERALS FROM CHIMNEYS SHALL NOT HAVE AN ANGLE OF LESS THAN 90° WITH THE MAIN LINE SEWER. ALL HOUSE LATERALS SHALL BE CONSTRUCTED IN A STRAIGHT ALIGNMENT AT RIGHT ANGLES FROM THE MAIN LINE SEWER EXCEPT AS SHOWN ON THE PLANS. ANY CHANGE IN ALIGNMENT SHALL BE REQUESTED IN WRITING BY THE PRIVATE ENGINEER.
 - THE PRIVATE ENGINEER SHALL FURNISH THE HOUSE LATERAL DRIVE AT THE PROPERTY LINE BELOW THE TOP OF CURB ELEVATION FOR EACH HOUSE LATERAL ON THE GRADE SHEET.
 - NO REVISIONS SHALL BE MADE IN THESE PLANS WITHOUT THE APPROVAL OF THE COUNTY ENGINEER.
 - USE STANDARD MANHOLE FRAMES AND COVERS, S-18
 - USE EXTRA STRENGTH PIPE ALL PIPE STANDARD DEPTH, EXCEPT AS NOTED
 - USE MECHANICAL COMPRESSION JOINTS FOR ALL T.C.P. JOINTS PER SPECS. SECS. 24 & 46, 48.
 - RESURFACE ALL TRENCH WITHIN PAVED AREA TO MEET L.A. COUNTY ROAD DIST. OR CALIF. STATE HIGHWAY REQUIREMENTS IN ACCORDANCE WITH PERMITS.
 - ENCASE FOUR FEET OF SEWER AT POINTS OF INTERFERENCE WITH POLES, CASE III, S-28
 - HOUSE LATERALS TO BE CONSTRUCTED WITH INVERTS AT PROPERTY LINE SIX FEET BELOW CURB GRADE EXCEPT AS NOTED.
 - MANHOLES SHALL BE BRICK SEWER STRUCTURES PER S-3 - PRECAST CONCRETE MANHOLES PER S-5 OF S-6 - MAY BE USED AS AN ALTERNATE IN LOCATIONS APPROVED BY THE COUNTY ENGINEER
 - FOR ALLOWABLE LEAKAGE TEST USE FORMULA NO. 2 - SPECS. SEC. 54
 - MANHOLE TOPS IN UNIMPROVED RIGHTS-OF-WAY TO BE SIX INCHES ABOVE FINISHED GRADE.
 - THE CONTRACTOR SHALL NOTIFY THE CONSTRUCTION DIVISION BY TELEPHONE, MADISON 5-4711, AT LEAST TWENTY-FOUR HOURS BEFORE STARTING ANY WORK UNDER THIS CONTRACT.
 - STANDARD SPECIFICATIONS DATED MAY 25, 1962 APPLY IN THE CONSTRUCTION OF THIS PROJECT.
 - ALL STATE AND LOCAL TRENCH SAFETY ORDERS WILL BE RIGIDLY ENFORCED.
 - CONSTRUCTION IN FILLED AREAS:
 - AN ACCEPTABLE CERTIFICATION OF COMPACTION TEST RESULTS SHALL BE SUBMITTED TO THE CONSTRUCTION DIVISION. COMPACTION TESTS ARE TO BE MADE IN ACCORDANCE WITH A.S.T.M. STANDARD METHOD OF TEST D-698-62T
 - NO CONSTRUCTION IS PERMITTED IN FILLED AREAS WHERE THE RELATIVE DENSITY OF COMPACTION IS LESS THAN 90%.
 - IF THE RELATIVE DENSITY OF COMPACTION IS LESS THAN 90%, ALL MAIN LINE AND HOUSE LATERALS SHALL BE CRADLED PER S-25 OR HAVE A SPECIAL BASE COURSE PER S-21, CASE III. SPECIAL MANHOLE BASES PER S-14 ARE REQUIRED.
 - IF THE RELATIVE DENSITY OF COMPACTION IS 90% OR GREATER, THE SPECIAL PROVISIONS IN (C) ARE NOT REQUIRED.

NOTE:
 GRADES TO WHICH THIS IMPROVEMENT IS TO BE CONSTRUCTED ARE SHOWN ON PLANS AND P.C. 6479. GRADE POINTS FOR TOP OF CURB, CENTER LINE OF STREETS, OR CENTER LINE OF ALLEYS ARE SHOWN BY CIRCLES ON PROFILES AT ALL POINTS BETWEEN DESIGNATED POINTS THE GRADE SHALL BE ESTABLISHED SO AS TO CONFORM TO A STRAIGHT LINE DRAWN BETWEEN SAID DESIGNATED POINTS.
 ELEVATIONS ARE IN FEET ABOVE U.S.C. & G.S. SEA LEVEL DATUM OF 1929.
 THIS DRAWING AND THE DATA HEREON ARE HEREBY MADE A PART OF THE SPECIFICATIONS.
 WORK SHALL BE CONSTRUCTED ACCORDING TO AND SHALL BE PROSECUTED ONLY IN THE PRESENCE OF THE COUNTY ENGINEER.
 BEFORE WORK CAN BE STARTED THE CONTRACTOR MUST OBTAIN A PERMIT TO EXCAVATE IN COUNTY STREETS FROM THE L.A. COUNTY ROAD DIST. DISTRICT OFFICE NO. 1 AND PAY A FEE TO THE COUNTY ENGINEER, ROOM 350, L.A. COUNTY BLDG. BLD. 138 N. 2ND ST., L.A. SUFFICIENT TO COVER THE COST OF CONSTRUCTION INSPECTION AND SECOND PLANS.
 APPROVAL OF THIS PLAN BY THE COUNTY OF LOS ANGELES DOES NOT CONSTITUTE A REPRESENTATION AS TO THE ACCURACY OF THE LOCATION OF OR THE EXISTENCE OR NON-EXISTENCE OF ANY UNDERGROUND UTILITY PIPE, OR STRUCTURE WITHIN THE LIMITS OF THIS PROJECT. THIS NOTE APPLIES TO ALL PAGES.
 IF WORK IS TO BE DONE IN A STATE HIGHWAY, A PERMIT MUST BE OBTAINED FROM THE STATE OF CALIFORNIA, DIVISION OF HIGHWAYS, 128 SOUTH SPRING STREET.

COUNTY OF LOS ANGELES, CALIFORNIA
 JOHN A. LAMBIE, COUNTY ENGINEER

APPROVED BY: *[Signature]*
 ASSISTANT SANITATION ENGINEER
 SUBMITTED BY: *[Signature]*
 REGIONAL ENGINEER
 CHECKED BY: *[Signature]*
 REG. C. E. NO. 10553

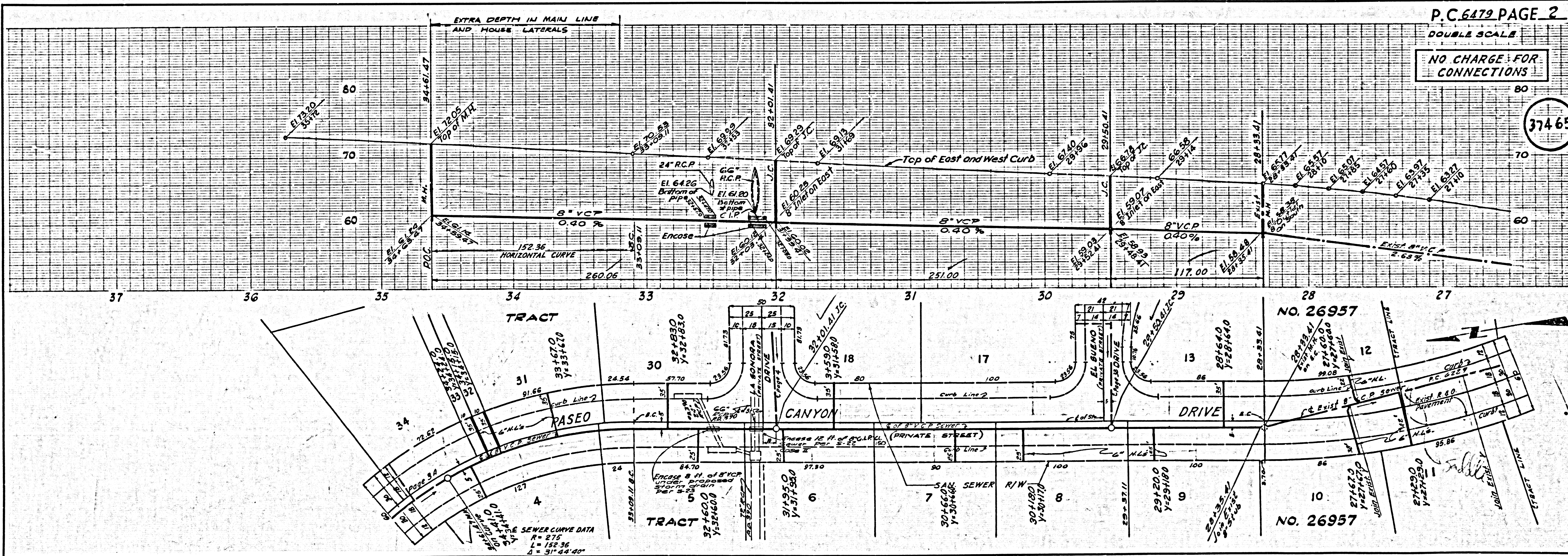
NO CHARGE FOR CONNECTIONS
[Signature]

J.N. 035980

P.C. 6479 PAGE 2
 DOUBLE SCALE

NO CHARGE FOR CONNECTIONS

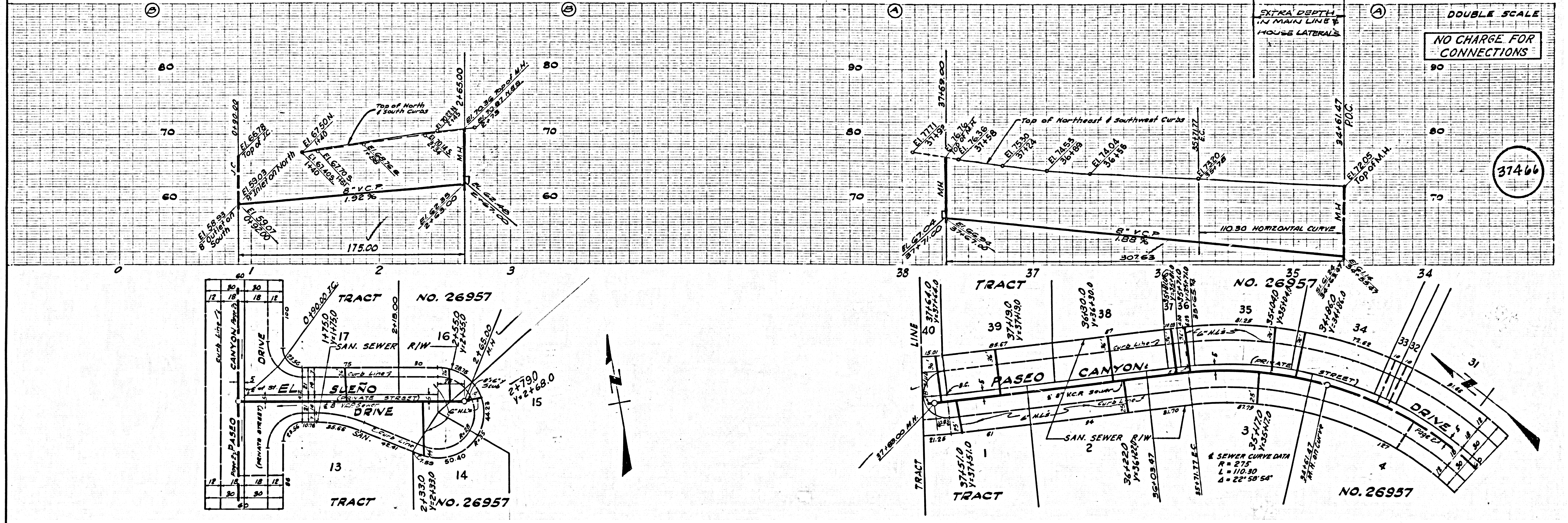
37465



DOUBLE SCALE

NO CHARGE FOR CONNECTIONS

37466



DOUBLE SCALE

NO CHARGE FOR CONNECTIONS

37467

