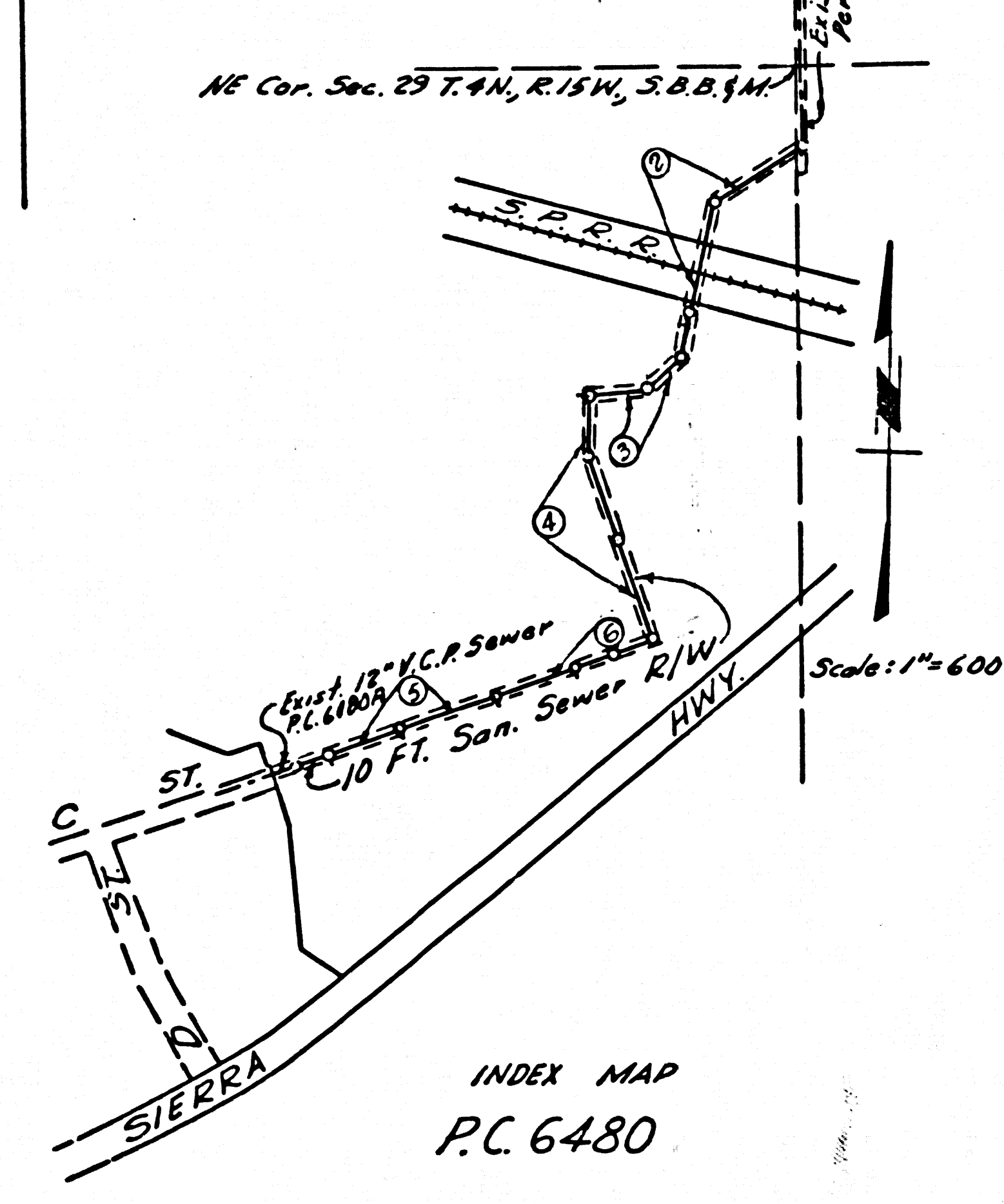


B.M. S.L. 942 ELEV. 1423.098  
 U.S.C. & G.S. Mon. Stamped "86-1955"  
 In N<sup>1</sup>/<sub>4</sub> End of W<sup>1</sup>/<sub>4</sub> about S.P.R.R.  
 One Corner of N<sup>1</sup>/<sub>4</sub> Sec. 29 Under Sierra  
 Hwy. Grade # 8.6 No. 514 of Scaled  
 Co. Rd. 6 N<sup>1</sup>/<sub>4</sub> of N<sup>1</sup>/<sub>4</sub> Rd # 25 Ely of 1/4 Serm  
 Hwy.



Note: Figures in Circles indicate page numbers.

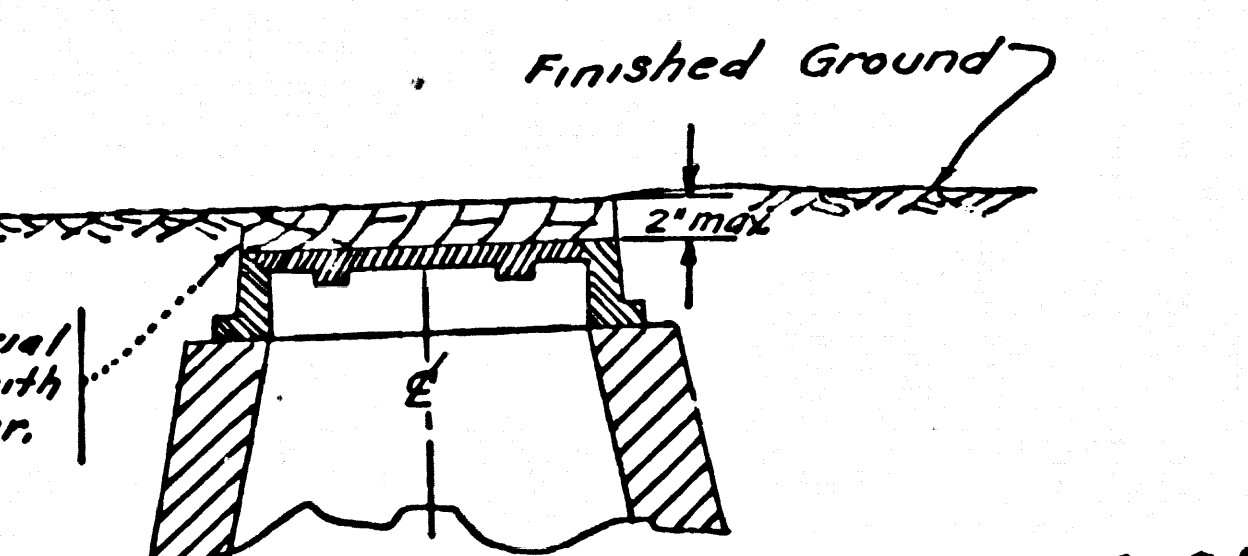
NEWHALL BLDG. DIST. NO. 8.2

PROFILE ALIGNMENT AND GRADE OF  
**SANITARY SEWERS** PAGE 1  
 TO BE CONSTRUCTED FOR

TRACT N<sup>o</sup> 27570  
 PRIVATE CONTRACT NO. 6480

W.S. 62  
 3 SHEETS, 6 PAGES  
 SCALE: VERT. 1"=4'  
 HORIZ. 1"=40'  
 JUNE 1, 1963  
 PREPARED IN THE OFFICES OF  
**SEABOARD ENGINEERING COMPANY**  
 By: *B. J. Jamming*  
 REG. C. E. NO. 785R  
 FOR LEGEND SEE PLAN NO. S-64

- NOTES:
1. PROVIDE STAKES ON THE PROPERTY LINE OR PROPERTY LINES PRODUCED AT RIGHT ANGLES TO THE SEWER LINE AT THE CENTER LINE OF EACH MANHOLE.
  2. NO REPRESENTATIVE OF THE COUNTY ENGINEER WILL SURVEY OR LAY OUT ANY PORTION OF THE WORK.
  3. THE PRIVATE ENGINEER SHALL FURNISH THE COUNTY ENGINEER WITH GRADE SHEETS AND STATIONING FOR ALL HOUSE LATERALS AND Y BRANCHES AND SHALL PROVIDE STAKES FOR THEM AT THEIR PROPER LOCATIONS WITH STATIONING PLAINLY MARKED. ALL HOUSE LATERALS SHALL BE CONSTRUCTED IN A STRAIGHT ALIGNMENT AT RIGHT ANGLES FROM THE MAIN LINE SEWER EXCEPT AS SHOWN ON THE PLANS. HOUSE LATERALS FROM CHIMNEYS SHALL HAVE AN ANGLE OF LESS THAN 45° WITH THE MAIN LINE SEWER. ANY CHANGE IN ALIGNMENT SHALL BE REQUESTED IN WRITING BY THE PRIVATE ENGINEER.
  4. THE PRIVATE ENGINEER SHALL FURNISH THE HOUSE LATERAL DEPTH AT THE PROPERTY LINE BELOW THE TOP OF CURB ELEVATION FOR EACH HOUSE LATERAL ON THE GRADE SHEET.
  5. NO REVISIONS SHALL BE MADE IN THESE PLANS WITHOUT THE APPROVAL OF THE COUNTY ENGINEER.
  6. THE CONTRACTOR SHALL NOTIFY THE CONSTRUCTION DIVISION BY TELEPHONE, MADISON 9-4727, EXT. 81551, AT LEAST TWENTY-FOUR HOURS BEFORE STARTING ANY WORK UNDER THIS CONTRACT.
  7. MANHOLES SHALL BE BRICK SEWER STRUCTURES PER S-102. PRECAST CONCRETE MANHOLES PER S-135 OR S-173 MAY BE USED AS AN ALTERNATE IN LOCATIONS APPROVED BY THE COUNTY ENGINEER.
  8. USE STANDARD MANHOLE FRAMES A-70 COVERS, S-107, EXCEPT AS NOTED.
  9. MANHOLE TOPS IN UNIMPROVED RIGHTS-OF-WAY TO BE SIX INCHES ABOVE FINISHED GRADE.
  10. USE EXTRA STRENGTH PIPE, ALL PIPE IS STANDARD DEPTH EXCEPT AS NOTED.
  11. USE MECHANICAL COMPRESSION JOINTS FOR ALL V.C.P. JOINTS PER SPEC., SECS. 34 & 48.
  12. WHERE EVER GROUND WATER IS ENCOUNTERED DURING THE CONSTRUCTION OF THE SEWERS, THE V.C.P. JOINTS SHALL BE OF JOINT COMPOUND PER SPEC., SECS. 33 & 48, OR MECHANICAL COMPRESSION JOINTS PER SPEC., SEC. 34.
  13. IF A POWER POLE IS WITHIN THREE FEET OF THE SEWER, THE SEWER SHALL BE ENCASED, PER S-172, CASE III, TWO FEET ON EITHER SIDE FROM THE POINT OF INTERFERENCE.
  14. IF DURING THE COURSE OF CONSTRUCTION IT IS DETERMINED THAT THERE IS LESS THAN FOUR FEET OF COVER OVER THE TOP OF A MAIN LINE OR HOUSE LATERAL V.C.P. SEWER WHICH IS NOT INDICATED ON THE PLANS, THE PIPE SHALL BE ENCASED PER S-172, CASE III, UNLESS OTHERWISE APPROVED BY THE COUNTY ENGINEER.
  15. HOUSE LATERALS TO BE CONSTRUCTED WITH INVERTS AT PROPERTY LINE... 6" FEET BELOW CURB GRADE EXCEPT AS NOTED.
  16. RESURFACE ALL TRENCHES WITHIN PAVED AREAS TO MEET L.A. COUNTY ROAD DEPT. OR CALIFORNIA STATE HIGHWAY REQUIREMENTS IN ACCORDANCE WITH PERMITS.
  17. FOR ALLOWABLE LEAKAGE TEST USE FORMULA NO. 2, SPEC., SEC. 54.
  18. A. NO CONSTRUCTION WILL BE PERMITTED IN FILLED AREAS UNLESS ACCEPTABLE CERTIFICATION IS SUBMITTED TO THE CONSTRUCTION DIVISION OF THE COUNTY ENGINEER'S DEPT. THAT RELATIVE COMPACTION IS GREATER THAN 90%.  
 B. IF COMPACTION IS LESS THAN 90% THE SEWER MUST BE GRADED AS SHOWN ON THE PLANS PER S-146.  
 C. IF COMPACTION IS GREATER THAN 90%, CROSSLING IS NOT REQUIRED.  
 19. ALL STATE AND LOCAL TRINCH SAFETY ORDERS WILL BE RIGIDLY ENFORCED.



TYPICAL CROSS SECTION OF SPECIAL MANHOLE TOP

NO CONNECTIONS FOR THE DISPOSAL OF INDUSTRIAL WASTES SHALL BE MADE TO SEWERS SHOWN ON THESE DRAWINGS WITHOUT WRITTEN PERMISSION FROM THE CHIEF ENGINEER AND GENERAL MANAGER OF THE COUNTY SANITATION DISTRICTS.

**COLLECT CHARGES AS INDICATED**  
*Manholes Reloc 4/10/63*

**ISSUE NO HOUSE CONNECTION PERMITS UNTIL P.C. 6452 IS CONSTRUCTED.**

Revision Approved *John Slack 10/2/63*  
 Paved Gratic Change & Pipe changed from 12" to 14" above, Encase 100' additional in R.R.W.

NOTE:  
 GRADES TO WHICH THIS IMPROVEMENT IS TO BE CONSTRUCTED ARE SHOWN ON PLANS AND PROFILES. GRADE POINTS FOR TOP OF CURBS, CENTER LINE OF STREETS, OR CENTER LINE OF ALLEYS ARE SHOWN BY CIRCLES ON PROFILES. AT ALL POINTS BETWEEN DESIGNATED POINTS THE GRADE SHALL BE ESTABLISHED SO AS TO CONFORM TO A STRAIGHT LINE DRAWN BETWEEN SAID DESIGNATED POINTS. ELEVATIONS ARE IN FEET ABOVE U.S.C. & G.S. SEA LEVEL DATUM OF 1929.

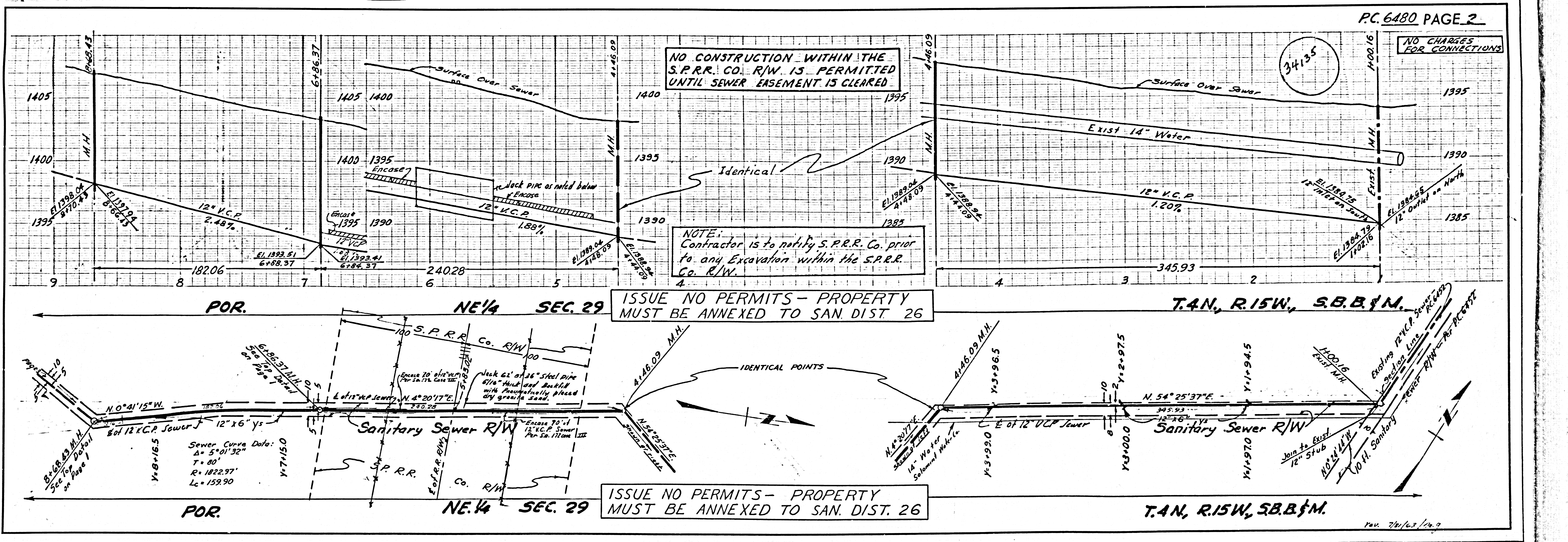
THIS DRAWING AND THE DATA HEREON ARE HEREBY MADE A PART OF THE SPECIFICATIONS. WORK SHALL BE CONSTRUCTED ACCORDING TO STANDARD SPECIFICATIONS DATED 1962, 1963, ON FILE IN THE OFFICE OF THE COUNTY ENGINEER AND SHALL BE PROSECUTED ONLY IN THE PRESENCE OF THE COUNTY ENGINEER.

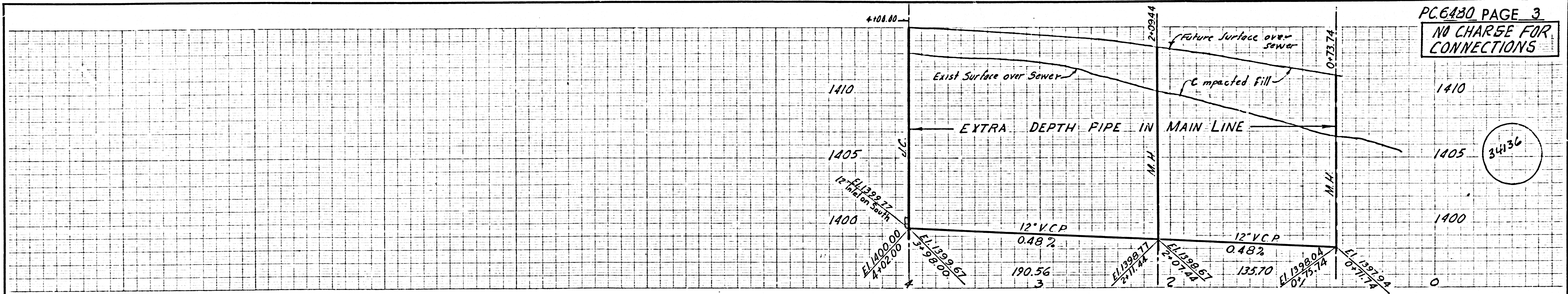
BEFORE WORK CAN BE STARTED, THE CONTRACTOR MUST OBTAIN A PERMIT TO CONSTRUCT STREETS FROM THE L.A. COUNTY ROAD DEPT., DISTRICT OFFICE NO. 2, AND PAY A FEE TO THE COUNTY ENGINEER, ROOM 200, COUNTY ENGINEERING BUILDING, 108 WEST SECOND STREET OR THE DISTRICT OFFICE, SUFFICIENT TO COVER THE COST OF CONSTRUCTION INSPECTION AND RECORD PLANS.

APPROVAL OF THIS PLAN BY THE COUNTY OF LOS ANGELES DOES NOT CONSTITUTE A REPRESENTATION AS TO THE ACCURACY OF THE LOCATION OR THE EXISTENCE OR NON-EXISTENCE OF ANY UNDERGROUND UTILITY PIPE, OR STRUCTURE WITHIN THE LIMITS OF THIS PROJECT. THIS NOTE APPLIES TO ALL PAGES.

IF WORK IS TO BE DONE IN A STATE HIGHWAY, A PERMIT MUST BE OBTAINED FROM THE STATE OF CALIFORNIA, DIVISION OF HIGHWAYS, 120 SOUTH SPRING STREET, LOS ANGELES, CALIFORNIA.

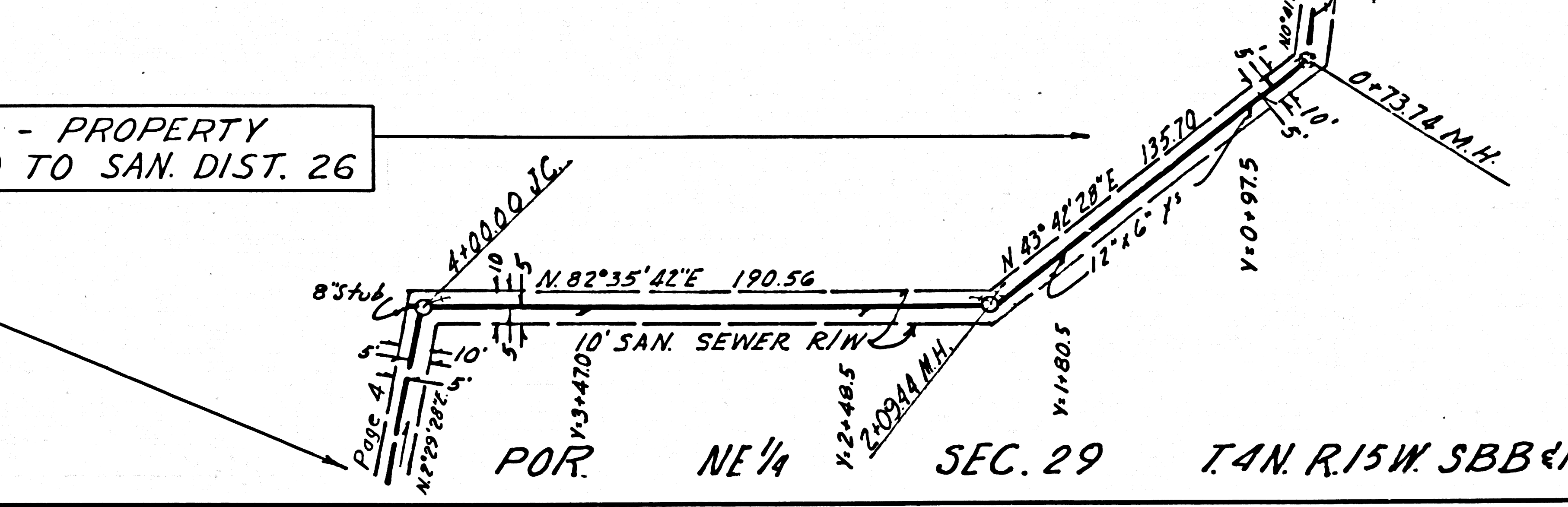
COUNTY OF LOS ANGELES, CALIFORNIA  
 JOHN A. LAMBIE, COUNTY ENGINEER J. D. PARKHURST, CHIEF ENGINEER  
 CO. SAN. DIST. NO. 26  
 APPROVED BY: *John Slack* (Sanitation Engineer) APPROVED BY: *John Slack* (Office Engineer)  
 SUBMITTED BY: *John Slack* (Regional Engineer)  
 CHECKED BY: *John Slack* (Reg. C.E. No. 785R)  
 REVISION APPROVED *John Slack 9/17/63*  
 Manholes Relocated & Grade Changed - Page 4 J.N. 0359.81





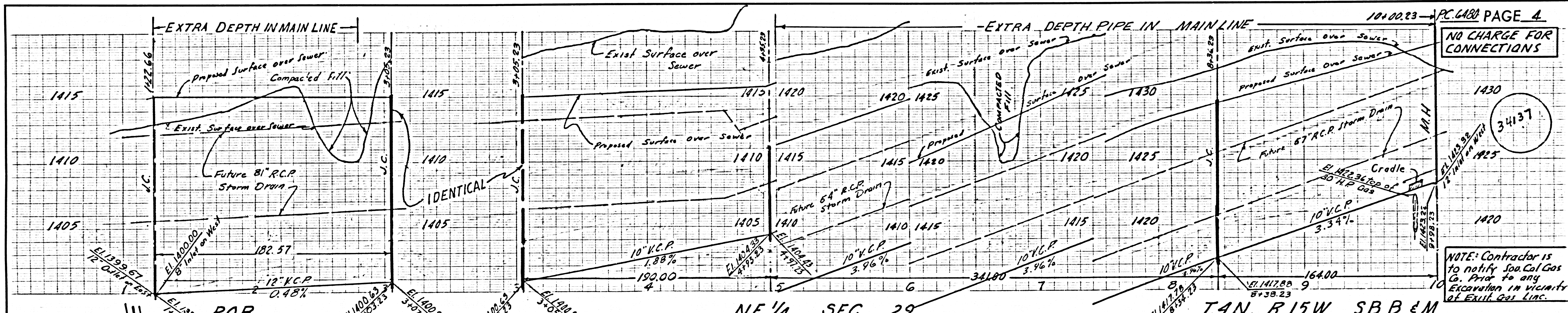
POR. NE 1/4 SEC. 29 T.4N. R.15W SBB&M

ISSUE NO PERMITS - PROPERTY MUST BE ANNEXED TO SAN. DIST. 26



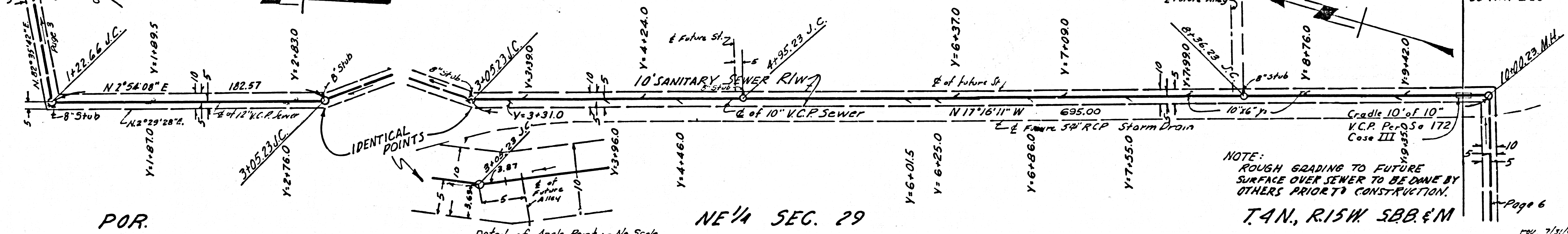
NOTE:  
ROUGH GRADING TO FUTURE SURFACE OVER SEWERS TO BE DONE BY OTHERS PRIOR TO CONSTRUCTION.

POR. NE 1/4 SEC. 29 T.4N. R.15W SBB&M



NE 1/4 SEC. 29

T.4N. R.15W S.B.B.&M.



NOTE:  
ROUGH GRADING TO FUTURE SURFACE OVER SEWER TO BE DONE BY OTHERS PRIOR TO CONSTRUCTION.

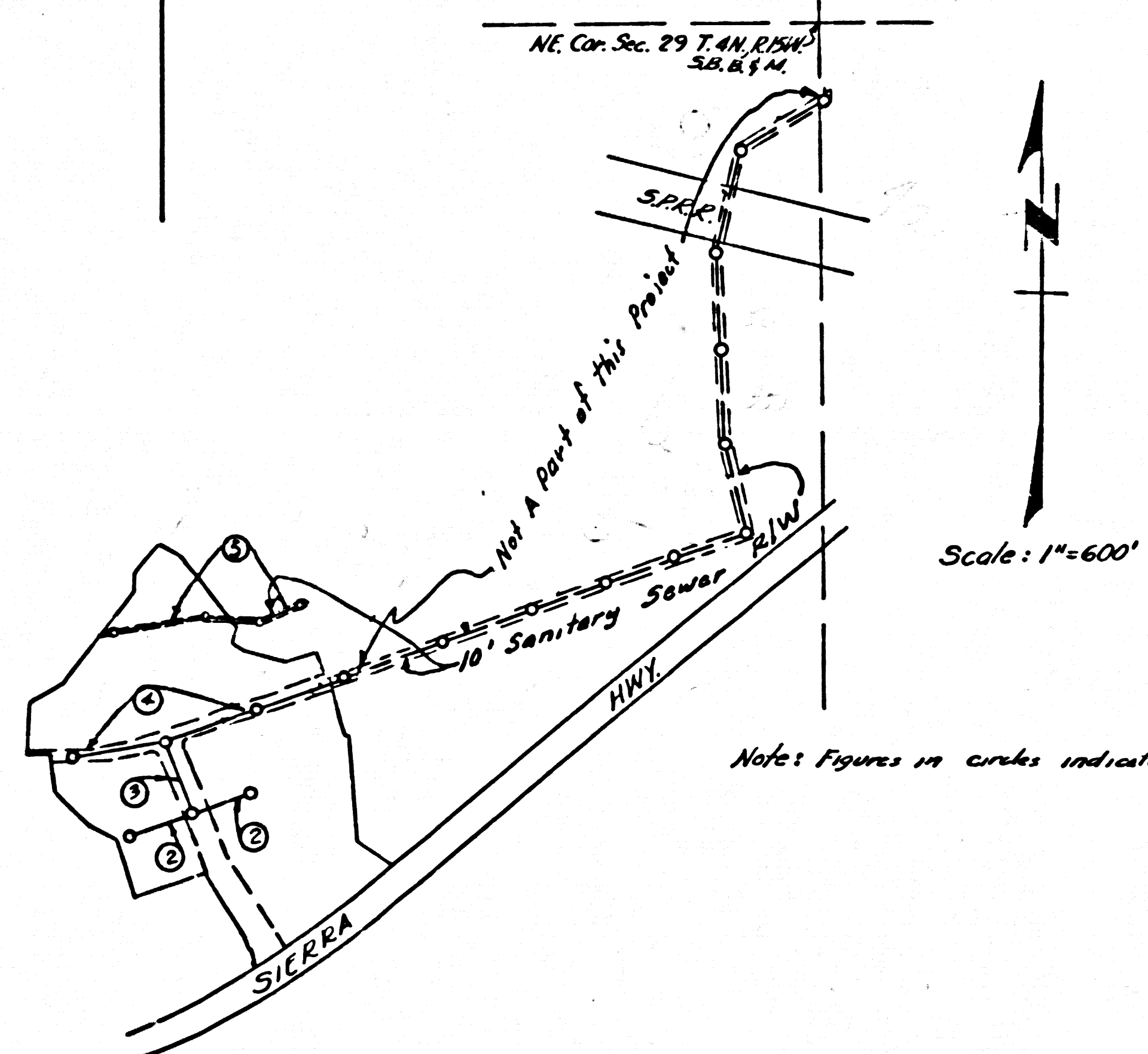
T.4N. R.15W SBB&M

Detail of Angle Point - No Scale

rev. 7/31/63  
rev. 11/6/63  
rev. 10/21/63



B.M. S.L. 942, U.S.C. & G. MON. STAMPED "186-1955"  
 IN NLY END OF W'LY ABUT. S.P.R.R. BOX CULVERT  
 #444.22 UNDER SIERRA HWY BRIDGE,  
 0.6 MI. S'LY OF SOLEDAD CN. RD. 6' NLY OF NLY RAIL  
 42.5' ELY OF 1/4 SIERRA HWY. ELEVATION 1423.098



INDEX MAP  
 TRACT N° 27570  
 P.C. 6480-A J.N. 0359.81

NO CHARGE FOR  
 CONNECTIONS  
 Murray Schell 2/23/63

NEWHALL BLDG. DIST. NO. 8.2

PROFILE ALIGNMENT AND GRADE OF P.C. 6480A  
 SANITARY SEWERS PAGE 1  
 CONSTRUCTED IN

TRACT N° 27570

PRIVATE CONTRACT NO. 6480A

W.S. 62

3 SHEETS, 5 PAGES  
 SCALE: VERT. 1"=4' HORIZ. 1"=40'  
 FEBRUARY, 1963  
 PREPARED IN THE OFFICES OF

By: *Jose K. Lambie*  
 REG. C. E. NO. 13737  
 FOR LEGEND SEE PLAN NO. S-A-64

33786

- NOTES:
1. PROVIDE STAKES ON THE PROPERTY LINE OR PROPERTY LINES PRODUCED AT RIGHT ANGLES TO THE SEWER LINE AT THE CENTER LINE OF EACH MANHOLE.
  2. NO REPRESENTATIVE OF THE COUNTY ENGINEER WILL SURVEY OR LAYOUT ANY PORTION OF THE WORK.
  3. THE PRIVATE ENGINEER SHALL FURNISH THE COUNTY ENGINEER WITH GRADE SHEETS AND STATION FOR ALL HOUSE LATERALS AND BRANCHES AND SHALL PROVIDE STAKES FOR THEM AT THEIR PROPER LOCATIONS WITH STATIONING PLAINLY MARKED. ANY CHANGE IN ALIGNMENT SHALL BE REQUESTED IN WRITING BY THE PRIVATE ENGINEER.
  4. NO REVISIONS SHALL BE MADE IN THESE PLANS WITHOUT THE APPROVAL OF THE COUNTY ENGINEER.
  5. USE STANDARD MANHOLE FRAMES AND COVERS, S-A-117, EXCEPT AS NOTED.
  6. USE EXTRA STRENGTH PIPE. ALL PIPE IS STANDARD DEPTH EXCEPT AS NOTED.
  7. USE COMPRESSION MECHANICAL JOINTS FOR ALL V.C.P. JOINTS PER S.P.C.S., SECS. 34 & 48.149.
  8. RESURFACE ALL TRENCH WITHIN PAVED AREA TO MEET L. A. COUNTY ROAD DEPT. OR CALIF. STATE HIGHWAY DEPT. REQUIREMENTS IN ACCORDANCE WITH PERMITS.
  9. HOUSE LATERALS TO BE CONSTRUCTED WITH INVERTS AT PROPERTY LINE 6 FEET BELOW CURB GRADE EXCEPT AS NOTED.
  10. FOR ALLOWABLE LEAKAGE TEST USE FORMULA NO. 1 PER S.P.C.S., SEC. 68.
  11. MANHOLE TOPS IN UNIMPROVED RIGHTS-OF-WAY TO BE 6" ABOVE FINISHED GRADE, EXCEPT AS NOTED.
  12. ALL HOUSE LATERALS SHALL BE CONSTRUCTED IN A STRAIGHT ALIGNMENT AT RIGHT ANGLES FROM THE MAIN LINE SEWER EXCEPT AS SHOWN ON THE PLANS. HOUSE LATERALS FROM CHIMNEYS SHALL NOT HAVE AN ANGLE OF LESS THAN 45° WITH THE MAIN LINE SEWER.
  13. THE PRIVATE ENGINEER SHALL FURNISH THE HOUSE LATERAL DEPTH AT THE PROPERTY LINE BELOW THE TOP OF CURB ELEVATION FOR EACH HOUSE LATERAL ON THE GRADE SHEET.
  14. THE CONTRACTOR SHALL NOTIFY THE CONSTRUCTION DIVISION BY TELEPHONE, MADISON 9-4747, EXT. 6151, AT LEAST 24 HOURS BEFORE STARTING ANY WORK UNDER THIS CONTRACT.
  15. MANHOLES SHALL BE BRICK SEWER STRUCTURES PER S-B-106. PRECAST CONCRETE MANHOLES PER S-B-135 OR S-B-173 MAY BE USED AS AN ALTERNATE IN LOCATIONS APPROVED BY THE COUNTY ENGINEER.
  16. WHEREVER GROUND WATER IS ENCOUNTERED DURING THE CONSTRUCTION OF THE SEWERS, THE V.C.P. JOINTS SHALL BE OF JOINT COMPOUND PER S.P.C.S., SECS. 33 & 48, OR MECHANICAL COMPRESSION JOINTS PER S.P.C.S., SEC. 36.
  17. IF A POWER POLE IS WITHIN 3 FEET OF THE SEWER, THE SEWER SHALL BE ENCASED.
  18. IF DURING THE COURSE OF CONSTRUCTION IT IS DETERMINED THAT THERE IS LESS THAN 3 FEET OF COVER OVER THE TOP OF A MAIN LINE OR HOUSE LATERAL, V.C.P. SEWER WHICH IS NOT INDICATED ON THIS PLAN, THE PIPE SHALL BE ENCASED PER S-B-172, CASE III, UNLESS OTHERWISE APPROVED BY THE COUNTY ENGINEER.
  19. ALL STATE AND LOCAL TRAFFIC SAFETY ORDERS WILL BE RIGIDLY ENFORCED.

NOTE:  
 GRADES TO WHICH THIS IMPROVEMENT IS TO BE CONSTRUCTED ARE SHOWN ON PLANS AND PROFILES. GRADE POINTS FOR TOP OF CURBS, CENTER LINE OF STREETS, OR CENTER LINE OF ALLEYS ARE SHOWN BY CIRCLES ON PROFILES. AT ALL POINTS BETWEEN DESIGNATED POINTS THE GRADE SHALL BE ESTABLISHED SO AS TO CONFORM TO A STRAIGHT LINE DRAWN BETWEEN SAID DESIGNATED POINTS.  
 ELEVATIONS ARE IN FEET ABOVE U.S.C. & G. SEA LEVEL DATUM OF 1929.  
 THIS DRAWING AND THE DATA HEREON ARE HEREBY MADE A PART OF THE SPECIFICATIONS.  
 BEFORE WORK CAN BE STARTED, THE CONTRACTOR MUST OBTAIN A PERMIT TO EXCAVATE IN COUNTY STREETS FROM THE L. A. COUNTY ROAD DEPT. BEFORE ANY AND PAY A FEE TO THE COUNTY ENGINEER, ROOM 330, COUNTY ENGINEERING BUILDING, 100 N. 1ST ST., ANTELOPE VALLEY AVENUE, PENDING TO COVER THE COST OF CONSTRUCTION INSPECTION AND APPROVAL OF THIS PLAN BY THE COUNTY OF LOS ANGELES DOES NOT CONSTITUTE A REPRESENTATION AS TO THE ACCURACY OF THE LOCATION OF OR THE EXISTENCE OR NON-EXISTENCE OF ANY UNDERGROUND UTILITY PIPE, OR STRUCTURE WITHIN THE LIMITS OF THIS PROJECT. THIS NOTE APPLIES TO ALL PAGES.  
 IF WORK IS TO BE DONE IN A STATE HIGHWAY, A PERMIT MUST BE OBTAINED FROM THE STATE OF CALIFORNIA, DIVISION OF HIGHWAYS, 120 SOUTH SPRING STREET.

COUNTY OF LOS ANGELES, CALIFORNIA

JOHN A. LAMBIE, COUNTY ENGINEER  
 J.D. PARKHURST, CHIEF ENGINEER  
 CO. SAN. DIST. NO. 86  
 APPROVED BY: *Jose K. Lambie*  
 ASST. SANITATION ENGINEER  
 APPROVED BY: *J.D. Parkhurst*  
 OFFICE ENGINEER  
 SUBMITTED BY: *Jose K. Lambie*  
 REGIONAL ENGINEER  
 CHECKED BY: *W. H. Miller*  
 REG. C. E. NO. 7466  
 J.N. 0359.81

NO CONNECTIONS FOR THE DISPOSAL OF INDUSTRIAL WASTES SHALL BE MADE TO SEWERS SHOWN ON THESE DRAWINGS WITHOUT WRITTEN PERMISSION FROM THE CHIEF ENGINEER AND GENERAL MANAGER OF THE COUNTY SANITATION DISTRICTS.

P.C. 6480A PAGE 2

NO CHARGE FOR CONNECTIONS

33787

