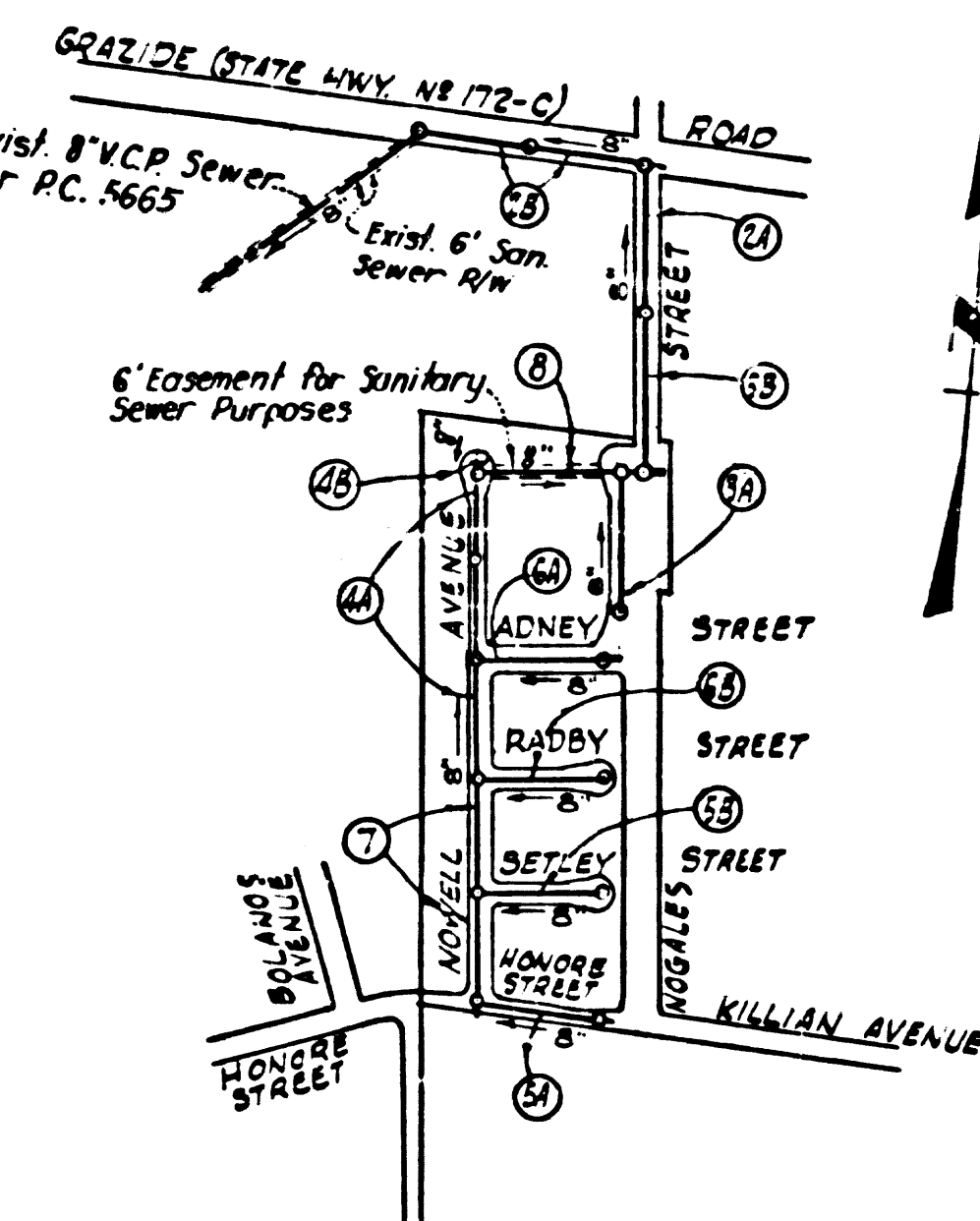


B.M. 56.1286 ELEV. 517.215
 L.G.S.N. of center of west headwall
 of driveway to House N° 19039
 Killian Ave 20' North of
 Killian Ave
 OTTERBEIN QUAD. 1955



INDEX MAP
 Scale 1"=600'
 TRACT No 27861

LA PUENTE BLDG. DIST. NO. 2

- NOTES:
1. PROVIDE STAKES ON THE PROPERTY LINE OR PROPERTY LINES PRODUCED AT RIGHT ANGLES TO THE SEWER LINE AT THE CENTER LINE OF EACH MANHOLE.
 2. NO REPRESENTATIVE OF THE COUNTY ENGINEER WILL SURVEY OR LAY OUT ANY PORTION OF THE WORK.
 3. THE PRIVATE ENGINEER SHALL FURNISH THE COUNTY ENGINEER WITH GRADE SHEETS AND STATIONING FOR ALL HOUSE LATERALS AND Y BRANCHES AND SHALL PROVIDE STAKES FOR THEM AT THEIR PROPER LOCATIONS WITH STATIONING PLAINLY MARKED. ALL HOUSE LATERALS SHALL BE CONSTRUCTED IN A STRAIGHT ALIGNMENT AT RIGHT ANGLES FROM THE MAIN LINE SEWER EXCEPT AS SHOWN ON THE PLANS. HOUSE LATERALS FROM CHIMNEYS SHALL NOT HAVE AN ANGLE OF LESS THAN 45° WITH THE MAIN LINE SEWER. ANY CHANGE IN ALIGNMENT SHALL BE REQUESTED IN WRITING BY THE PRIVATE ENGINEER.
 4. THE PRIVATE ENGINEER SHALL FURNISH THE HOUSE LATERAL DEPTH AT THE PROPERTY LINE BELOW THE TOP OF CURB ELEVATION FOR EACH HOUSE LATERAL ON THE GRADE SHEET.
 5. NO REVISIONS SHALL BE MADE IN THESE PLANS WITHOUT THE APPROVAL OF THE COUNTY ENGINEER.
 6. THE CONTRACTOR SHALL NOTIFY THE CONSTRUCTION DIVISION BY TELEPHONE, MADISON 9-4747, EXT. 81551, AT LEAST TWENTY-FOUR HOURS BEFORE STARTING ANY WORK UNDER THIS CONTRACT.
 7. MANHOLES SHALL BE BRICK SEWER STRUCTURES PER S-104. PRECAST CONCRETE MANHOLES PER S-135 OR S-173 MAY BE USED AS AN ALTERNATE IN LOCATIONS APPROVED BY THE COUNTY ENGINEER.
 8. USE STANDARD MANHOLE FRAMES AND COVERS, S-117.
 9. MANHOLE TOPS IN UNIMPROVED RIGHTS OF WAY TO BE SIX INCHES ABOVE FINISHED GRADE. (AS NOTED)
 10. USE EXTRA STRENGTH PIPE. ALL PIPE IS STANDARD SIXTH EXCEPT AS NOTED.
 11. USE CHAIN MORTAR OR MECHANICAL COMPRESSION JOINTS FOR ALL V.C.P. JOINTS IN MAIN LINE PER SPECS, SECS 36 f 68, EXCEPT AS NOTED.
 12. WHERE EVER GROUND WATER IS ENCOUNTERED DURING THE CONSTRUCTION OF THE SEWERS, THE V.C.P. JOINTS SHALL BE OF JOINT COMPOUND PER SPECS, SECS 33 & 48, OR MECHANICAL COMPRESSION JOINTS PER SPECS, SEC. 34.
 13. IF A POWER POLE IS WITHIN THREE FEET OF THE SEWER, THE SEWER SHALL BE ENCASED, PER S-172, CASE III, TWO FEET ON EITHER SIDE FROM THE POINT OF INTERFERENCE.
 14. IF DURING THE COURSE OF CONSTRUCTION IT IS DETERMINED THAT THERE IS LESS THAN FOUR FEET OF COVER OVER THE TOP OF A MAIN LINE OR HOUSE LATERAL V.C.P. SEWER WHICH IS NOT INDICATED ON THE PLANS, THE PIPE SHALL BE ENCASED PER S-172, CASE III, UNLESS OTHERWISE APPROVED BY THE COUNTY ENGINEER.
 15. HOUSE LATERALS TO BE CONSTRUCTED WITH INVERTS AT PROPERTY LINE ... FEET BELOW CURB GRADE EXCEPT AS NOTED.
 16. RESURFACE ALL TRENCHES WITHIN PAVED AREAS TO MEET L.A. COUNTY ROAD DEPT. OR CALIFORNIA STATE HIGHWAY REQUIREMENTS IN ACCORDANCE WITH PERMITS.
 17. FOR ALLOWABLE LEAKAGE TEST USE FORMULA NO. 1, SPECS, SEC. 54.
 18. USE MECHANICAL COMPRESSION JOINTS FOR ALL V.C.P. HOUSE LATERALS PER SPECS, SEC. 36 f 49.
19. ALL STATE AND LOCAL TRENCH SAFETY ORDERS WILL BE RIGIDLY ENFORCED.

NO CONNECTIONS FOR THE DISPOSAL OF INDUSTRIAL WASTES SHALL BE MADE TO SEWERS SHOWN ON THESE DRAWINGS WITHOUT WRITTEN PERMISSION FROM THE CHIEF ENGINEER AND GENERAL MANAGER OF THE COUNTY SANITATION DISTRICTS.

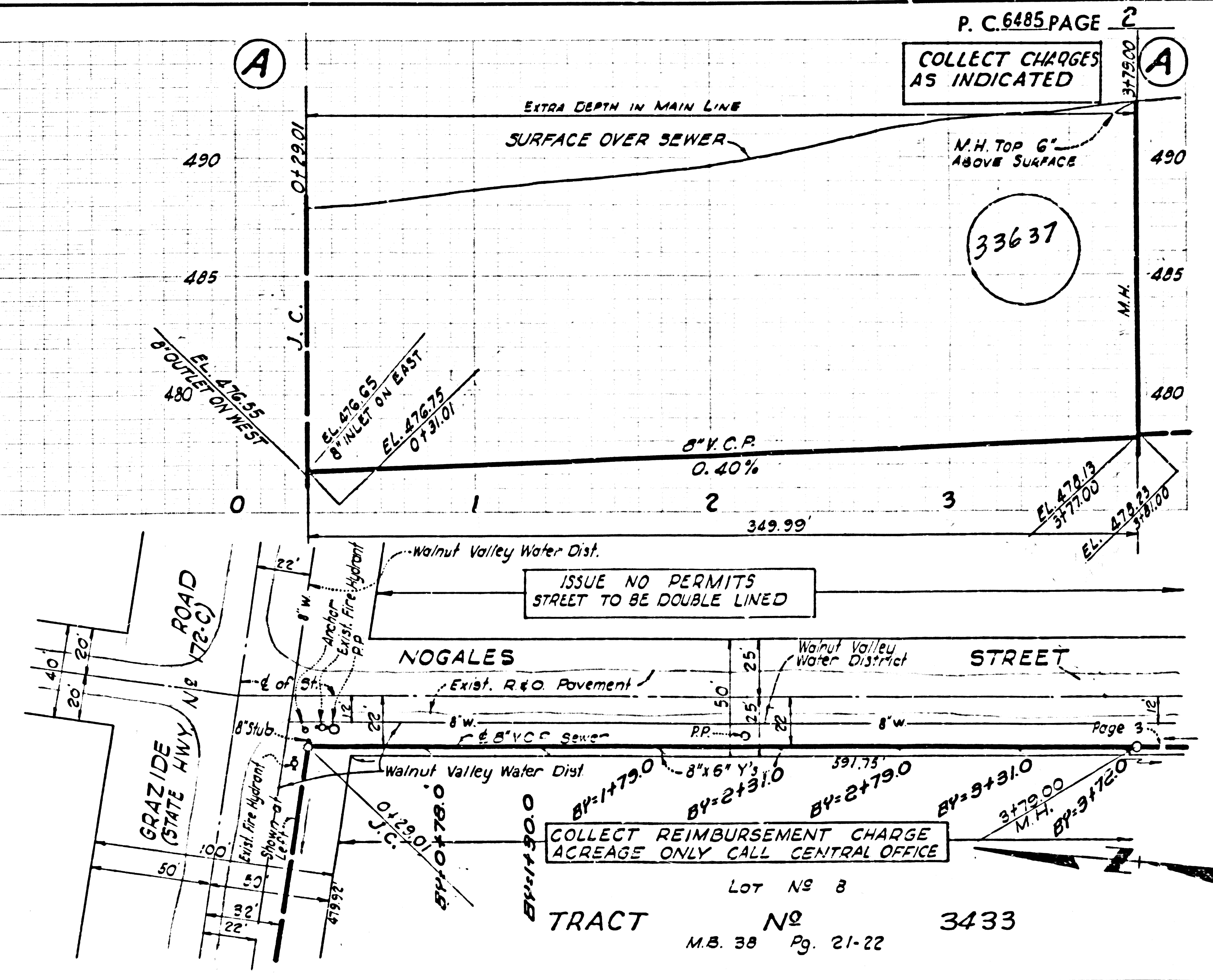
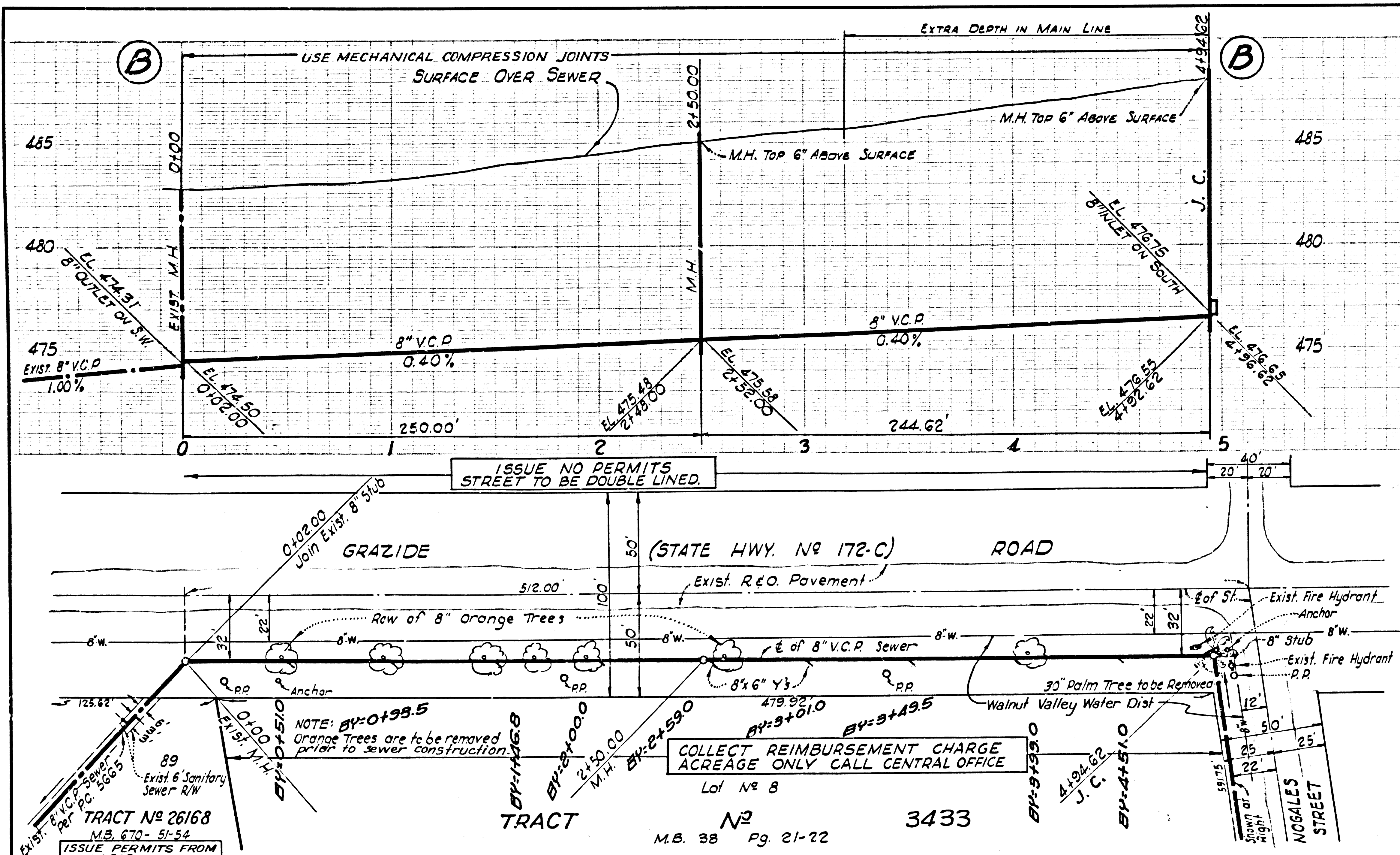
COLLECT CHARGES AS INDICATED
 P.P. Smith

PROFILE ALIGNMENT AND GRADE OF P.C. 6485
 SANITARY SEWERS PAGE 1
 TO BE CONSTRUCTED IN
TRACT No 27861
 PRIVATE CONTRACT NO. 6485

W.S. 38
 4 SHEETS, 8 PAGES
 SCALE: VERT. 1"=4' HORIZ. 1"=40'
 JANUARY, 1963
 PREPARED IN THE OFFICES OF
 BROWN ENGINEERING
 7632 COMMERCIAL AVENUE, BUENA PARK, CALIFORNIA
 by *George D. Stanger*
 REG. C. E. NO. 3245
 FOR LEGEND SEE PLAN NO. S-11-64

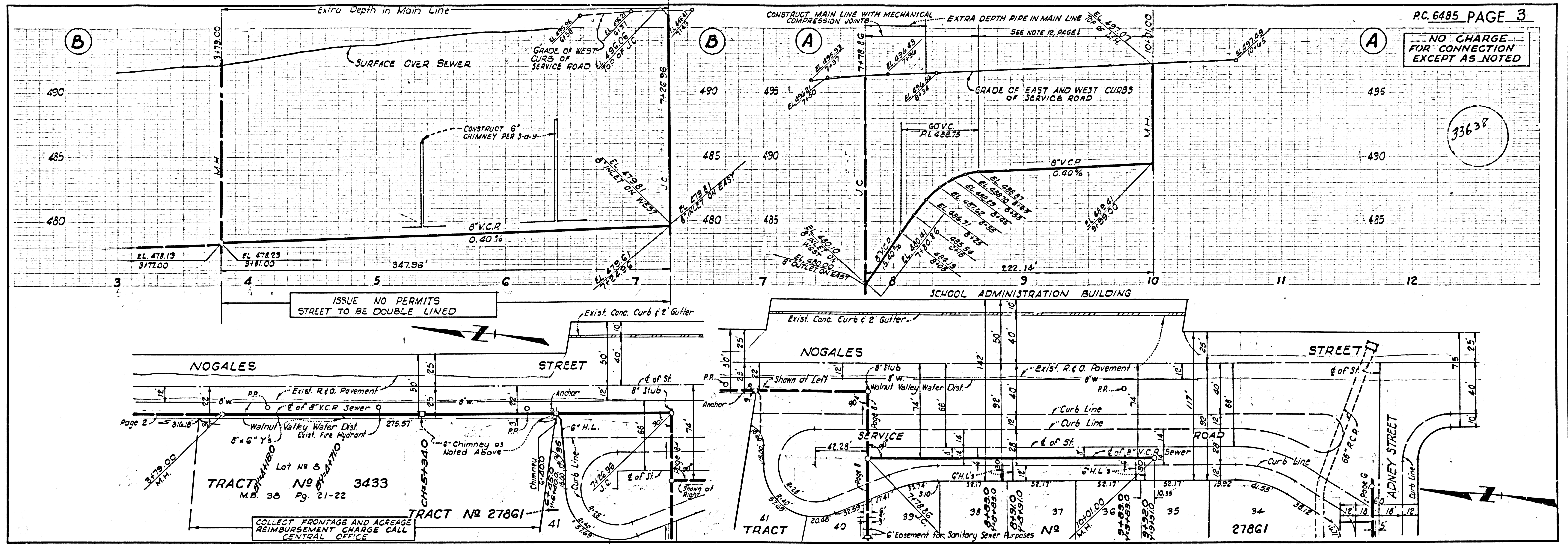
NOTE:
 GRADES TO WHICH THIS IMPROVEMENT IS TO BE CONSTRUCTED ARE SHOWN ON PLANS AND PROFILES. GRADE POINTS FOR TOP OF CURBS, CENTER LINE OF STREETS, OR CENTER LINE OF ALLEYS ARE SHOWN BY CIRCLES ON PROFILES. AT ALL POINTS BETWEEN DESIGNATED POINTS THE GRADE SHALL BE ESTABLISHED SO AS TO CONFORM TO A STRAIGHT LINE DRAWN BETWEEN SAID DESIGNATED POINTS. ELEVATIONS ARE IN FEET ABOVE U.S.C. & G.S. SEA LEVEL DATUM OF 1929.
 THIS DRAWING AND THE DATA HEREON ARE HEREBY MADE A PART OF THE SPECIFICATIONS.
 WORK SHALL BE CONSTRUCTED ACCORDING TO STANDARD SPECIFICATIONS DATED MAY 22, 1962, ON FILE IN THE OFFICE OF THE COUNTY ENGINEER AND SHALL BE PROSECUTED ONLY IN THE PRESENCE OF THE COUNTY ENGINEER.
 BEFORE WORK CAN BE STARTED, THE CONTRACTOR MUST OBTAIN A PERMIT TO EXCAVATE IN COUNTY STREETS FROM THE L.A. COUNTY ROAD DEPT., DISTRICT OFFICE NO. ... AND PAY A FEE TO THE COUNTY ENGINEER, ROOM 300, COUNTY ENGINEERING BUILDING, 100 WEST SECOND STREET OR ... B.A.N. D/M/8 ... REGIONAL OFFICE, SUFFICIENT TO COVER THE COST OF CONSTRUCTION INSPECTION AND RECORD PLANS.
 APPROVAL OF THIS PLAN BY THE COUNTY OF LOS ANGELES DOES NOT CONSTITUTE A REPRESENTATION AS TO THE ACCURACY OF THE LOCATION OF OR THE EXISTENCE OR NON-EXISTENCE OF ANY UNDERGROUND UTILITY PIPE, OR STRUCTURE WITHIN THE LIMITS OF THIS PROJECT. THIS NOTE APPLIES TO ALL PAGES.
 IF WORK IS TO BE DONE IN A STATE HIGHWAY, A PERMIT MUST BE OBTAINED FROM THE STATE OF CALIFORNIA, DIVISION OF HIGHWAYS, 126 SOUTH SPRING STREET, LOS ANGELES, CALIFORNIA.

COUNTY OF LOS ANGELES, CALIFORNIA
 JOHN A. LAMBIE, COUNTY ENGINEER J. D. PARKURST, CHIEF ENGINEER
 CO. SAN. DIST. NO. 2
 APPROVED BY *George D. Stanger* ASSISTANT SANITATION ENGINEER APPROVED BY *J. D. Parkurst* CHIEF ENGINEER
 SUBMITTED BY *B.T. Marling* R.F. No 11636 SAN. DIST. REGIONAL OFFICE 4-18-63
 CHECKED BY *S.K. Wada* 4-18-63 REG. C.E. NO. 3406
 Revised June 3, 1963
 Raised Grades on Nowell Ave, Roddy St, Bailey St and Service Rd of Nogales St.
 Approved By *B.T. Marling* 6-6-63 Office of County Engineer, P.C. No 11636
 J.N. 0359.84



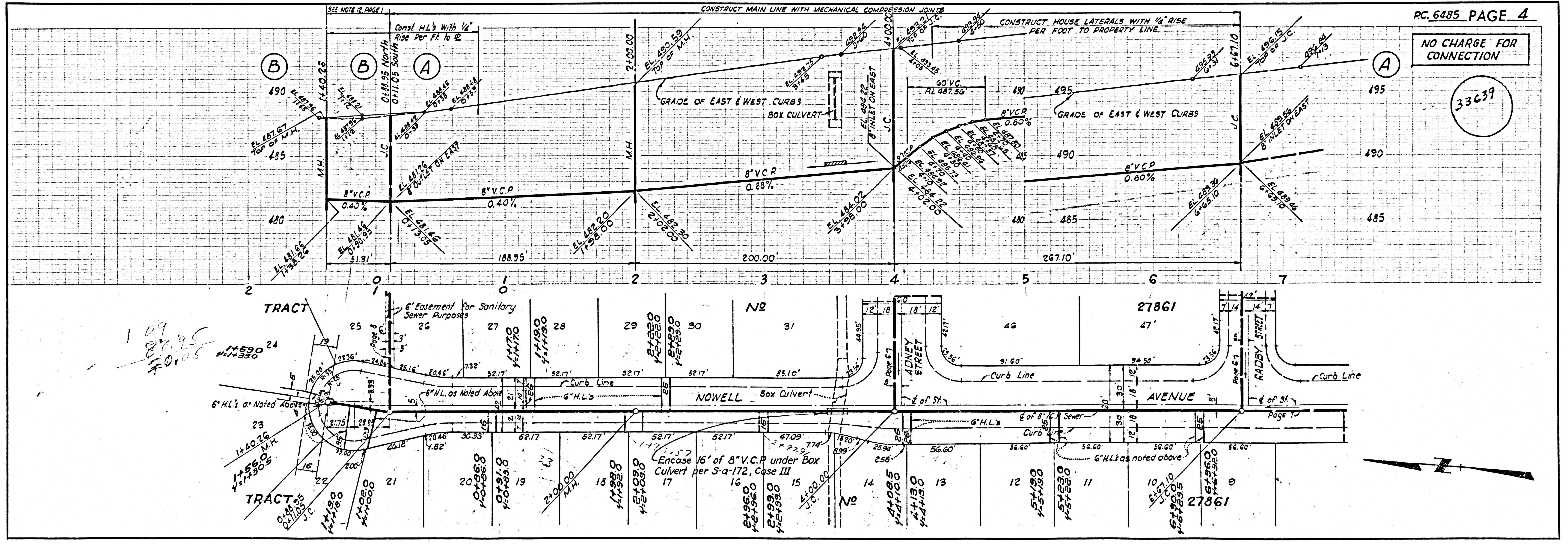
NO CHARGE FOR CONNECTION EXCEPT AS NOTED

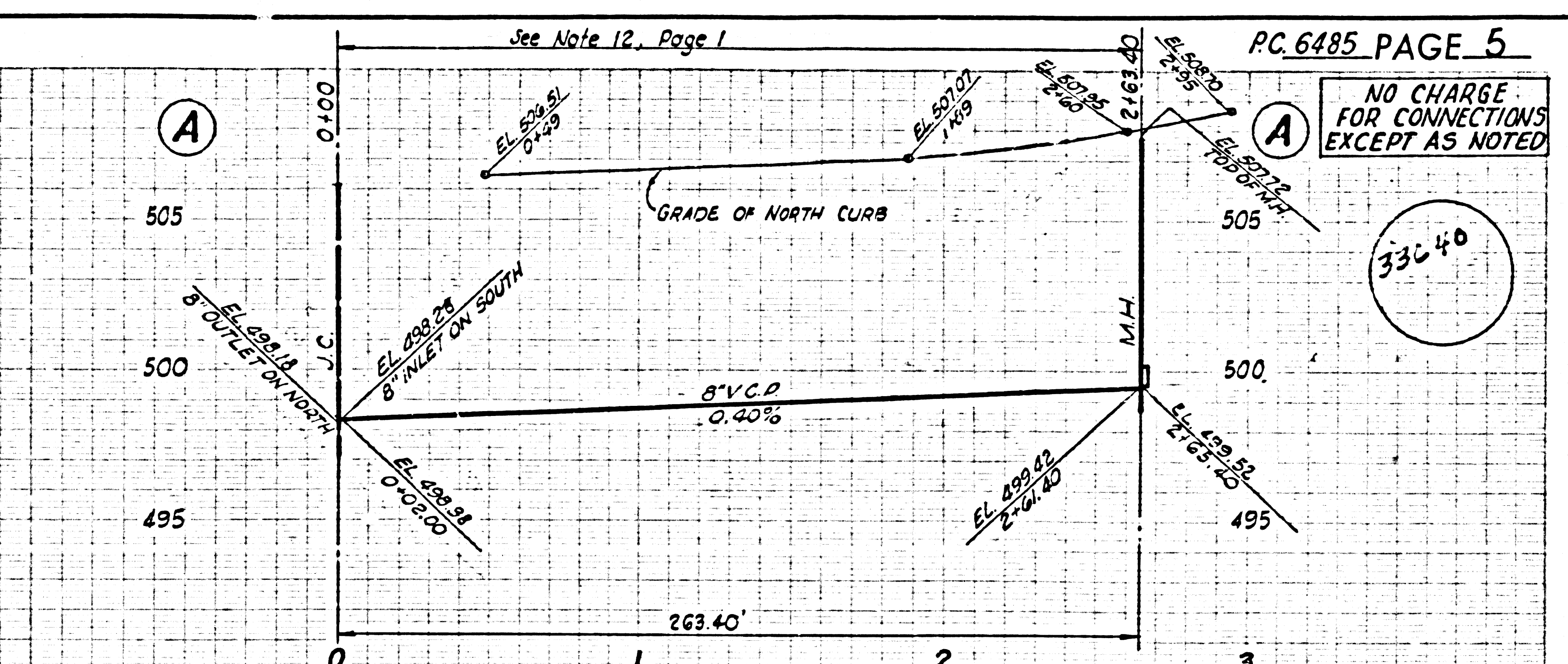
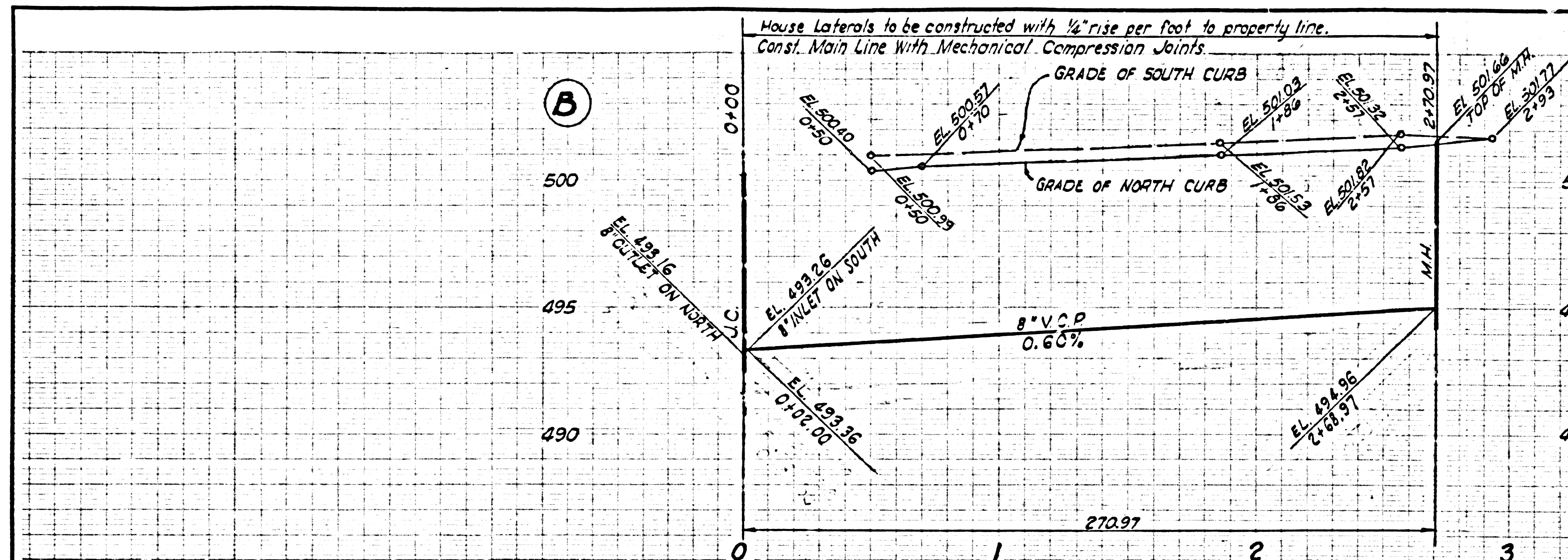
33638



NO CHARGE FOR CONNECTION

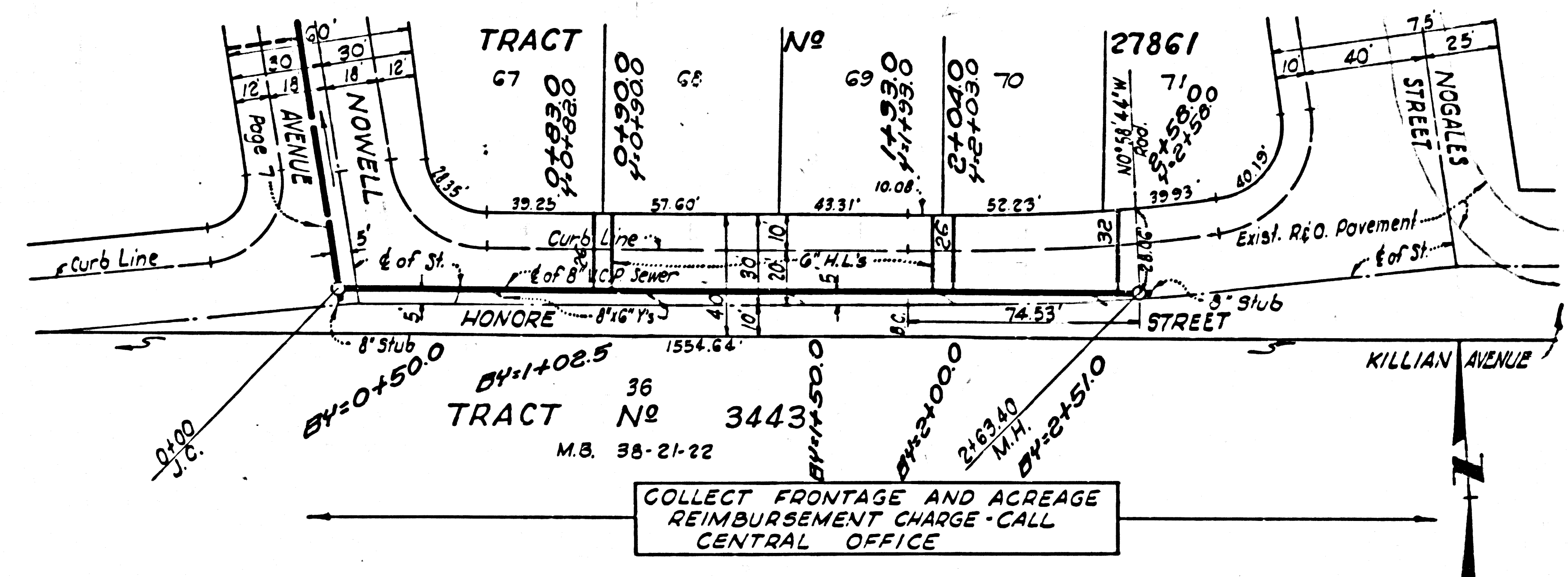
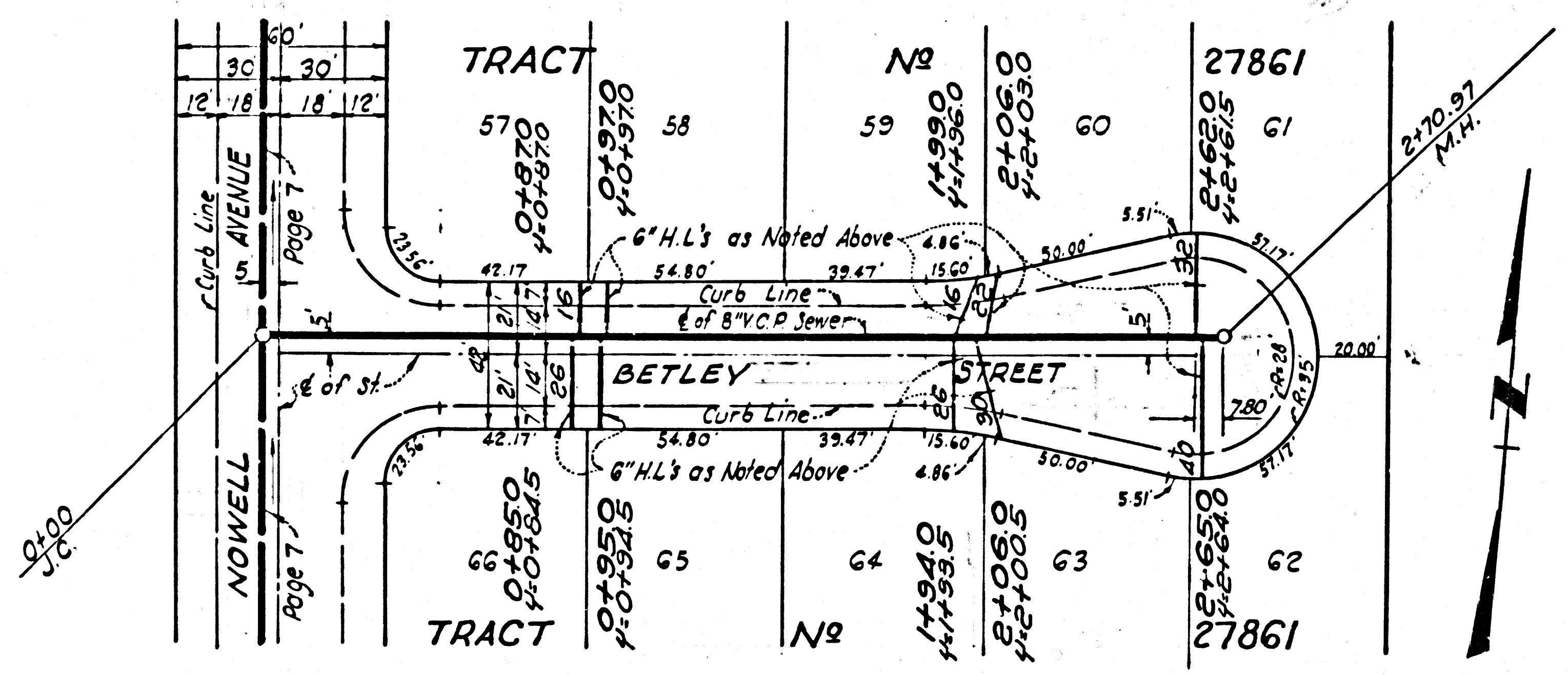
33639



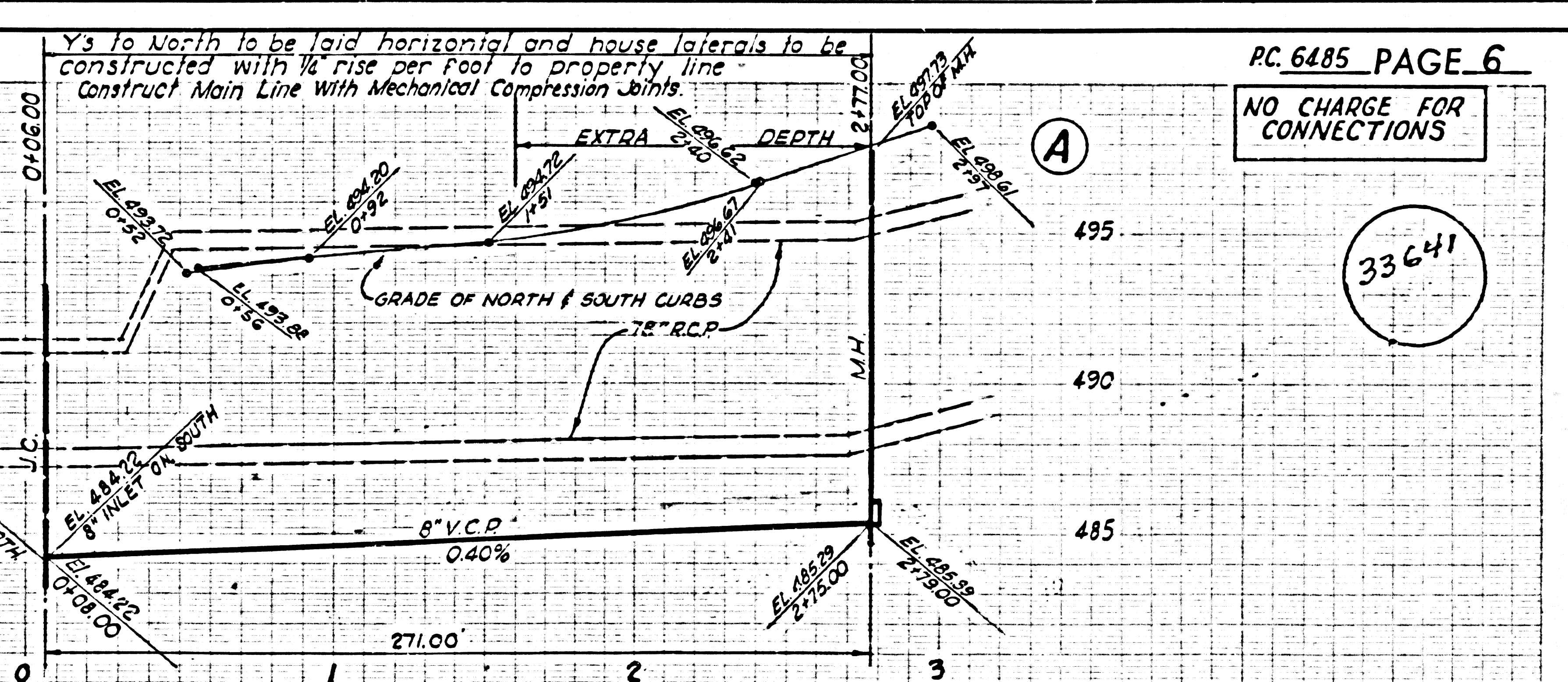
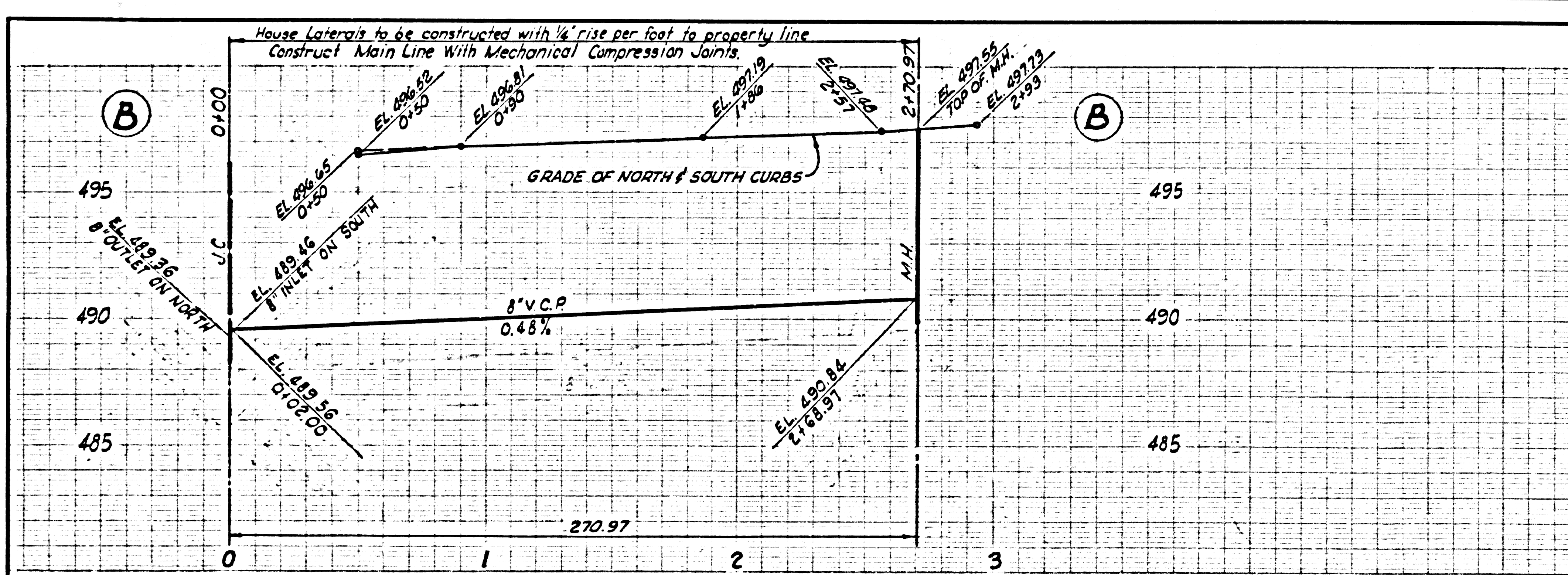


NO CHARGE FOR CONNECTIONS EXCEPT AS NOTED

33640

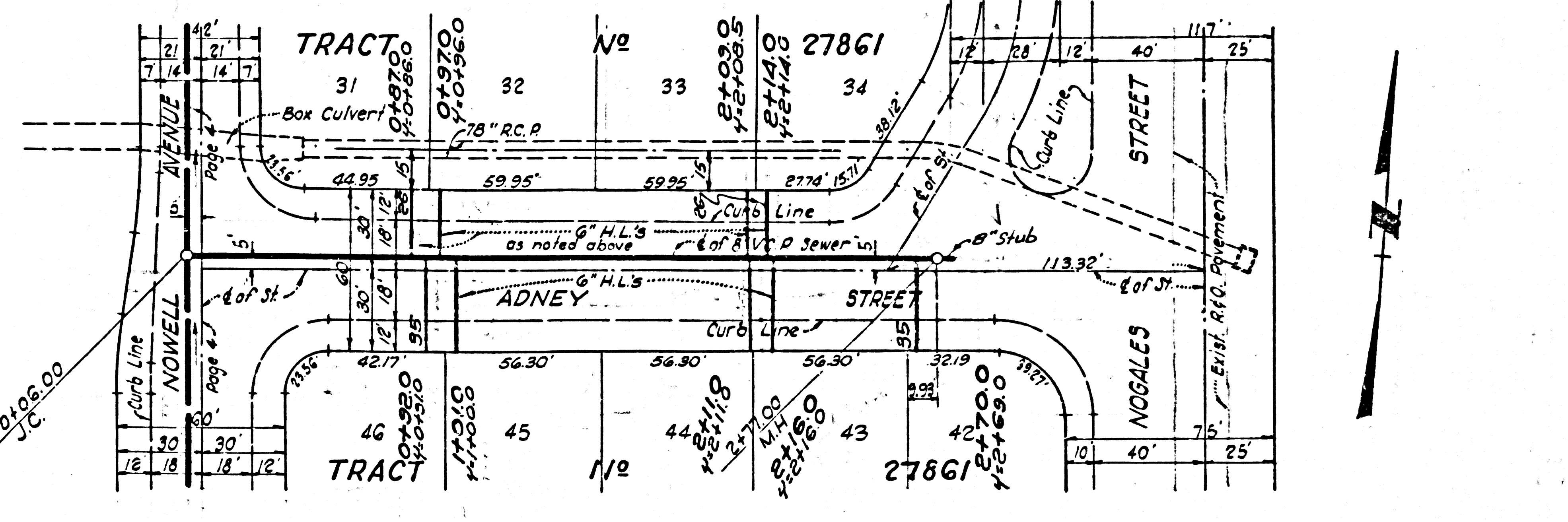
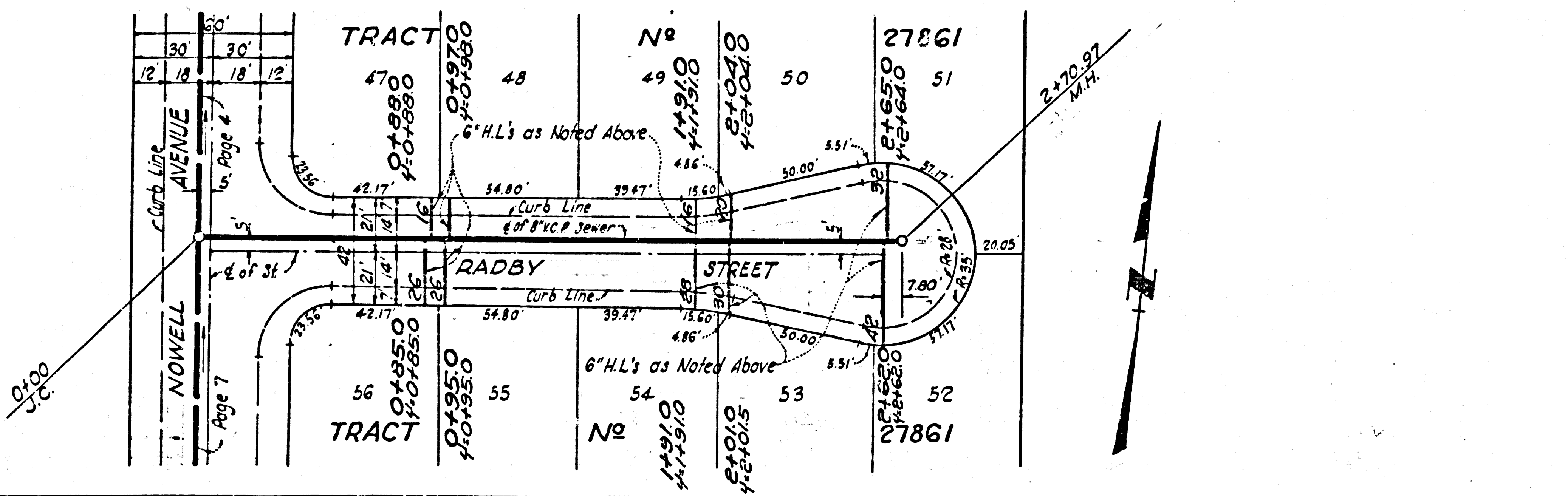


COLLECT FRONTAGE AND ACREAGE REIMBURSEMENT CHARGE - CALL CENTRAL OFFICE



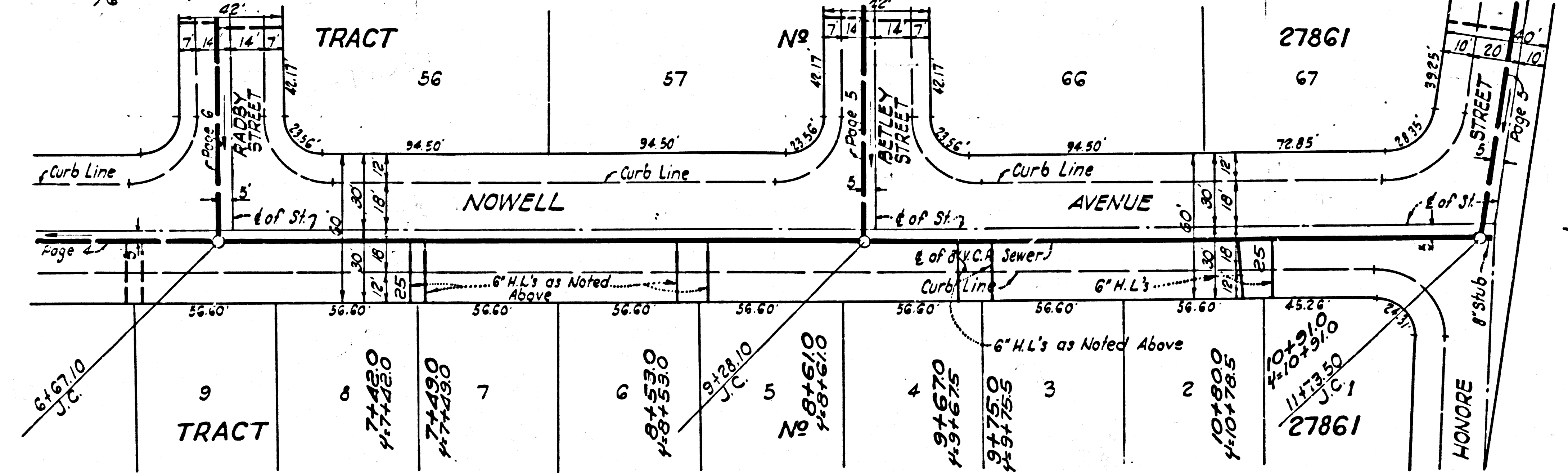
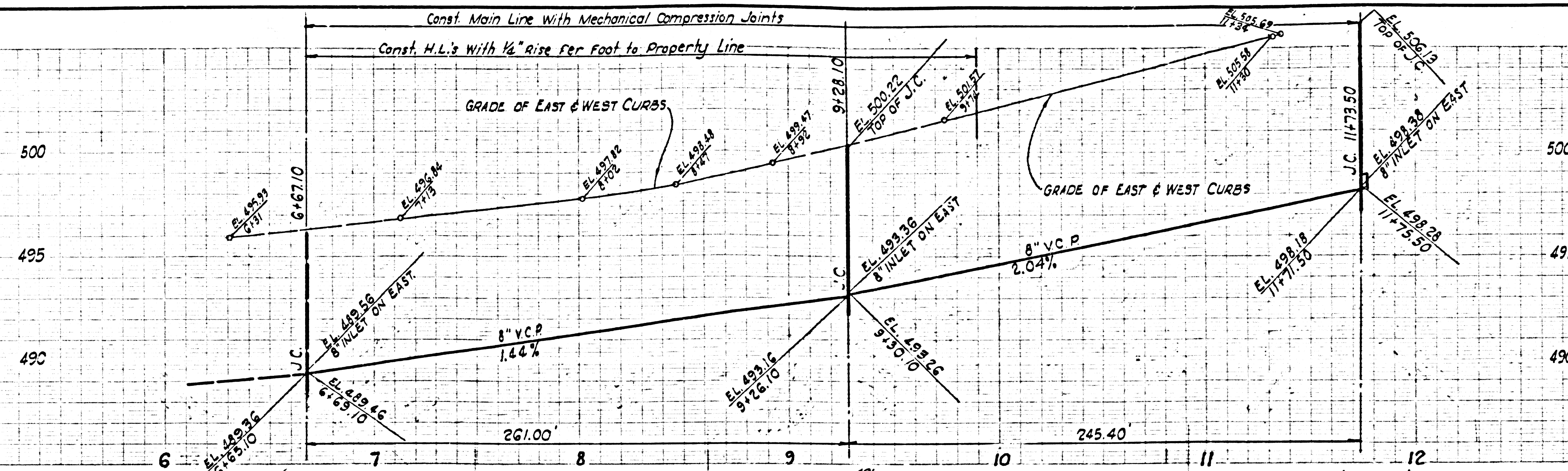
NO CHARGE FOR CONNECTIONS

33641



NO CHARGE FOR CONNECTION

33642



NO CHARGE FOR CONNECTION

33643

