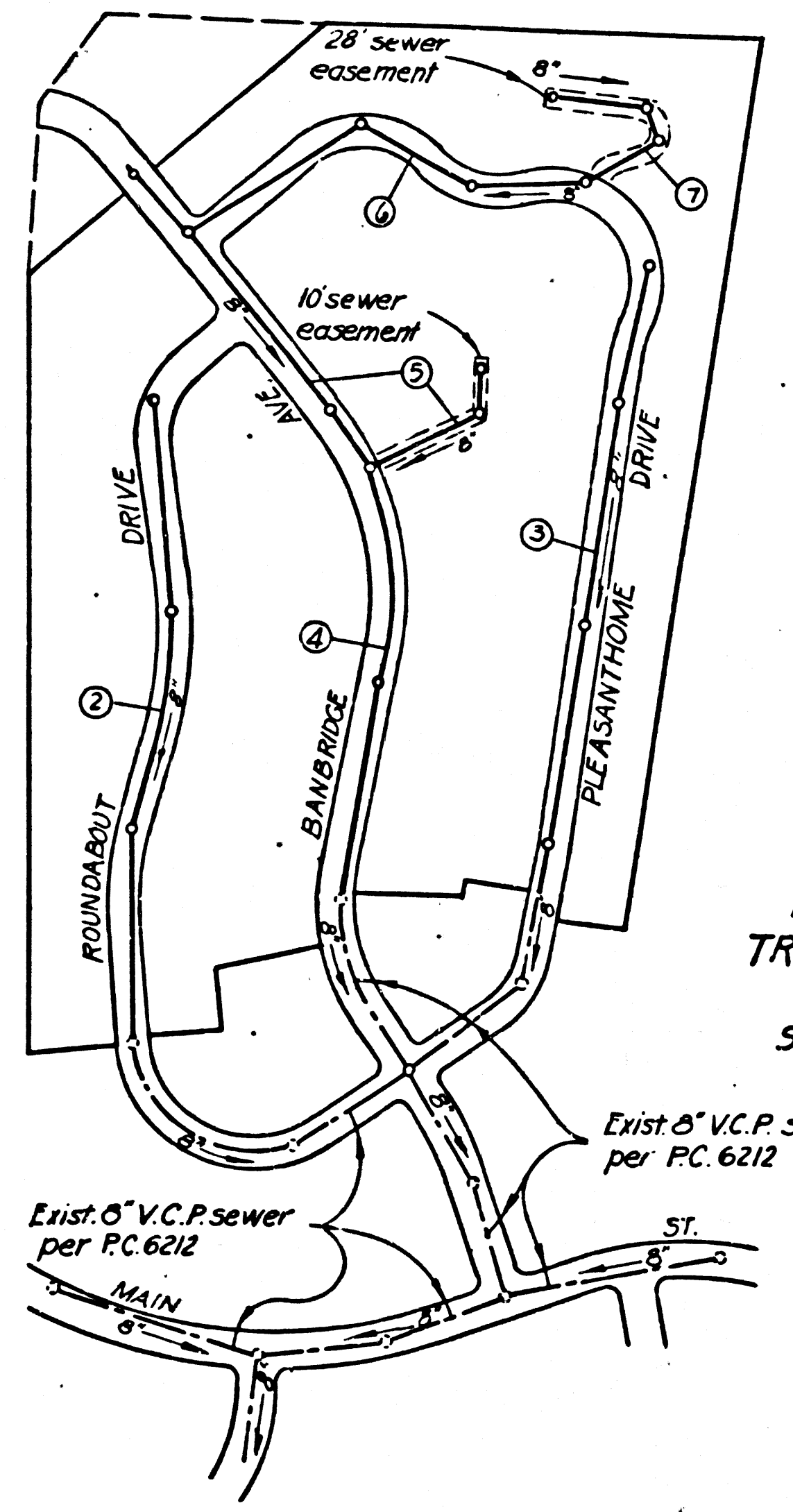


B.M. S.G. 1043 ELEV. 329.671
 3 1/2" U.S. GEODETIC CAP 8" 1/2" W.S. SURFACE
 9 FEET ELEV. STATION OF SPARK 2 1/2" DIA. C.I. VALLEY BLVD. 2' 160' N/6 C.I. INT. VALLEY BLVD. 8' GLEN DORA AVE. 2' 127' N/6 EHD OF STATION PLATFORM
PUEENTE QUAD. 19 55



INDEX MAP
 TRACT N° 20399
 P.C. 6486
 SCALE 1"=300'

REVISION
 1. Extended Main Line Sewer in Banbridge Ave. from Sta. 18+10.94 to Sta. 19+93.12 on Page 5 A
 2. Moved M.H. from Sta. 19+10.94 to Sta. 19+93.12 on Page 5 A
 3. Raised Sewer Grade Between Sta. 18+69.14 and Sta. 19+93.12 from 9.96% to 10.00% on Page 5 A.
 By: *Bob Manning* R.E.N. C 11636
 San Dimas Regional Office Date: 8-8-63

CITY OF LA PUENTE
 APPROVED: *Richard Cole* 8-11-63
 CITY MANAGER

DOUBLE SCALE
CITY OF LA PUENTE BLDG. DIST. NO. 2.02

- NOTES:
1. PROVIDE STAKES ON THE PROPERTY LINE OR PROPERTY LINES PRODUCED AT RIGHT ANGLES TO THE SEWER LINE AT THE CENTER LINE OF EACH MANHOLE.
 2. NO REPRESENTATIVE OF THE CITY ENGINEER WILL SURVEY OR LAY OUT ANY PORTION OF THE WORK.
 3. THE PRIVATE ENGINEER SHALL FURNISH THE CITY ENGINEER WITH GRADE SHEETS AND STATIONING FOR ALL HOUSE LATERALS AND T BRANCHES AND SHALL PROVIDE STAKES FOR THEM AT THEIR PROPER LOCATIONS WITH STATIONING PLAINLY MARKED. ALL HOUSE LATERALS SHALL BE CONSTRUCTED IN A STRAIGHT ALIGNMENT AT RIGHT ANGLES FROM THE MAIN LINE SEWER EXCEPT AS SHOWN ON THE PLANS. HOUSE LATERALS FROM CHIMNEYS SHALL NOT HAVE AN ANGLE OF LESS THAN 45° WITH THE MAIN LINE SEWER. ANY CHANGE IN ALIGNMENT SHALL BE REQUESTED IN WRITING BY THE PRIVATE ENGINEER.
 4. THE PRIVATE ENGINEER SHALL FURNISH THE HOUSE LATERAL DEPTH AT THE PROPERTY LINE BELOW THE TOP OF CURB ELEVATION FOR EACH HOUSE LATERAL ON THE GRADE SHEET.
 5. NO REVISIONS SHALL BE MADE IN THESE PLANS WITHOUT THE APPROVAL OF THE CITY ENGINEER.
 6. THE CONTRACTOR SHALL NOTIFY THE CONSTRUCTION DIVISION BY TELEPHONE, MADISON 9-4742, EXT. 81551, AT LEAST TWENTY-FOUR HOURS BEFORE STARTING ANY WORK UNDER THIS CONTRACT.
 7. MANHOLES SHALL BE BRICK SEWER STRUCTURES PER S-104. PRECAST CONCRETE MANHOLES PER S-135 OR S-173 MAY BE USED AS AN ALTERNATE IN LOCATIONS APPROVED BY THE CITY ENGINEER.
 8. USE STANDARD MANHOLE FRAMES AND COVERS, S-117.
 9. MANHOLE TOPS IN UNIMPROVED RIGHTS-OF-WAY TO BE SIX INCHES ABOVE FINISHED GRADE.
 10. USE EXTRA STRENGTH PIPE. ALL PIPE IS STANDARD DEPTH EXCEPT AS NOTED.
 11. USE CEMENT MORTAR OR MECHANICAL COMPRESSION JOINTS FOR ALL V.C.P. JOINTS IN MAIN LINE PER SPECS., SECS. 36-140, EXCEPT AS NOTED.
 12. WHERE EVER GROUND WATER IS ENCOUNTERED DURING THE CONSTRUCTION OF THE SEWERS, THE V.C.P. JOINTS SHALL BE OF JOINT COMPOUND PER SPECS., SECS. 33 & 48, OR MECHANICAL COMPRESSION JOINTS PER SPECS., SEC. 36.
 13. IF A POWER POLE IS WITHIN THREE FEET OF THE SEWER, THE SEWER SHALL BE ENCASED, PER S-172, CASE III, TWO FEET ON EITHER SIDE FROM THE POINT OF INTERFERENCE.
 14. IF DURING THE COURSE OF CONSTRUCTION IT IS DETERMINED THAT THERE IS LESS THAN FOUR FEET OF COVER OVER THE TOP OF A MAIN LINE OR HOUSE LATERAL V.C.P. SEWER WHICH IS NOT INDICATED ON THE PLANS, THE PIPE SHALL BE ENCASED PER S-172, CASE III, UNLESS OTHERWISE APPROVED BY THE CITY ENGINEER.
 15. HOUSE LATERALS TO BE CONSTRUCTED WITH INVERTS AT PROPERTY LINE... 6" FEET BELOW CURB GRADE EXCEPT AS NOTED.
 16. RESURFACE ALL TRENCHES WITHIN PAVED AREAS TO MEET L.A. COUNTY ROAD DEPT. OR CALIFORNIA STATE HIGHWAY REQUIREMENTS IN ACCORDANCE WITH PERMITS.
 17. FOR ALLOWABLE LEAKAGE TEST USE FORMULA NO. 1, SPECS., SEC. 54.
 18. "SEWERS IN FILLED GROUND"
 (a) NO CONSTRUCTION SHALL BE PERMITTED IN FILLED AREA UNLESS ACCEPTABLE CERTIFICATION IS SUBMITTED TO THE CONSTRUCTION DIVISION OF THE COUNTY ENGINEER'S DEPARTMENT, THAT RELATIVE CONFINEMENT IS GREATER THAN 80%.
 (b) CONSTRUCTION IS NOT TO EXCEED 48" DEPTH UNLESS OTHERWISE APPROVED BY THE CITY ENGINEER.
 (c) ALL SPECIAL MANHOLE RISERS MUST BE INSTALLED PER S-173 AS INDICATED ON PLANS.
 (d) MECHANICAL COMPRESSION JOINTS SHALL BE USED IN ALL FILLED AREAS UNLESS OTHERWISE APPROVED BY THE CITY ENGINEER.
 MECHANICAL COMPRESSION JOINTS MUST BE SUBSTITUTED FOR CEMENT MORTAR FOR ALL JOINTS IN FILLED AREAS.
 ALL FILLS TO BE IN PLACE BEFORE CONSTRUCTION OF SEWER.
 19. USE MECHANICAL COMPRESSION JOINTS FOR ALL R.C.P. HOUSE LATERALS PER SPECS., SECS. 36-140.
 20. ALL STATE AND LOCAL TRAVEL SAFETY DEPARTS WILL BE STRICTLY ENFORCED.

NO CHARGE FOR CONNECTIONS
Richard Cole 8/1/63

ISSUE NO HOUSE LATERAL PERMITS UNTIL P.C. 6212 IS ACCEPTED

PROFILE ALIGNMENT AND GRADE OF
SANITARY SEWERS P.C. 6486
 TO BE CONSTRUCTED IN
TRACT NO. 20399 33,807
 PAGE 1

PRIVATE CONTRACT NO. 6486

W.S. 38
 4 SHEETS, 7 PAGES
 SCALE: VERT. 1"=8' HORIZ. 1"=40'
 JANUARY, 1963
 PREPARED IN THE OFFICES OF
ADAMS & ELLS
 CIVIL ENGINEERS
 REG. C. E. NO. 10880

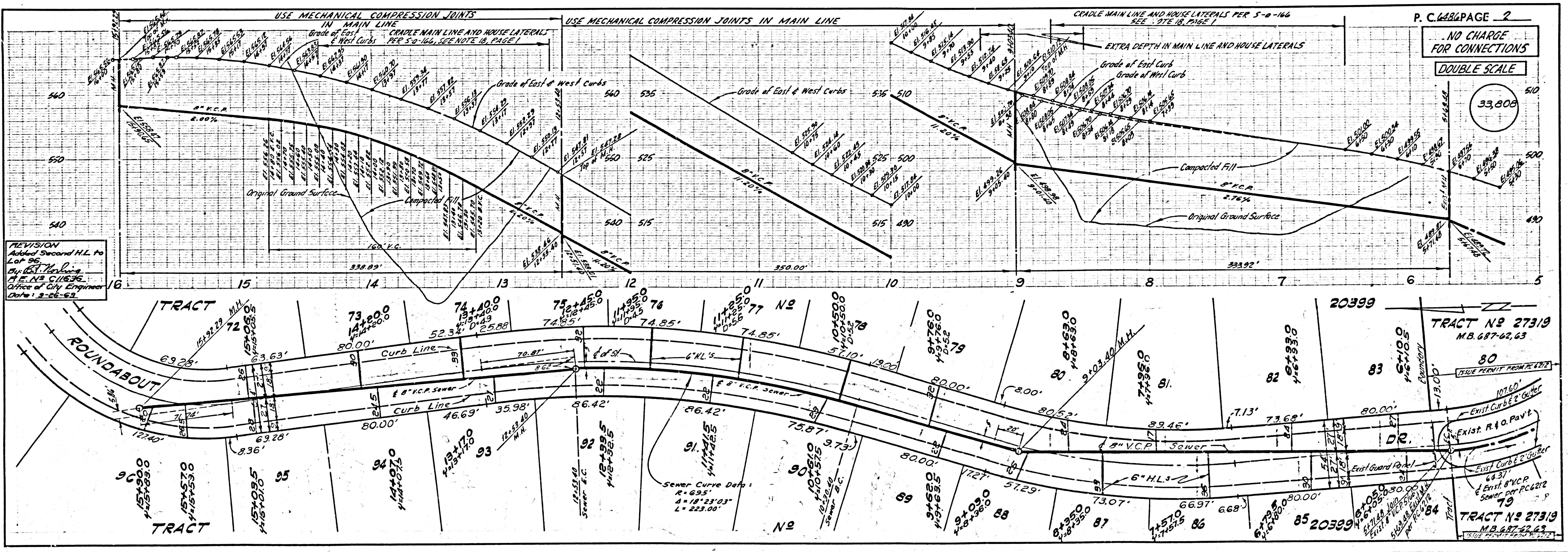
FOR LEGEND SEE PLAN NO. S-6-64

NOTE:
 GRADES TO WHICH THIS IMPROVEMENT IS TO BE CONSTRUCTED ARE SHOWN ON PLANS AND PROFILES. GRADE POINTS FOR TOP OF CURBS, CENTER LINE OF STREETS, OR CENTER LINE OF ALLEYS ARE SHOWN BY CIRCLES ON PROFILES AT ALL POINTS BETWEEN DESIGNATED POINTS. THE GRADE SHALL BE ESTABLISHED SO AS TO CONFORM TO A STRAIGHT LINE DRAWN BETWEEN SAID DESIGNATED POINTS. ELEVATIONS ARE IN FEET ABOVE U.S.C. & G.S. SEA LEVEL DATUM OF 1929. THIS DRAWING AND THE DATA HEREON ARE HEREBY MADE A PART OF THE SPECIFICATIONS. WORK SHALL BE CONSTRUCTED ACCORDING TO STANDARD SPECIFICATIONS DATED MAY 25, 1962, ON FILE IN THE OFFICE OF THE CITY ENGINEER AND SHALL BE PROSECUTED ONLY IN THE PRESENCE OF THE CITY ENGINEER. BEFORE WORK CAN BE STARTED, THE CONTRACTOR MUST OBTAIN A PERMIT TO EXCAVATE IN CITY STREETS FROM THE L.A. COUNTY ROAD DEPT., DISTRICT OFFICE NO. 1, AND PAY A FEE TO THE CITY ENGINEER, CITY OF LA PUENTE, 15317 EAST MAIN STREET, LA PUENTE, CALIFORNIA, SUFFICIENT TO COVER THE COST OF CONSTRUCTION INSPECTION AND RECORD PLANS. APPROVAL OF THIS PLAN BY THE CITY OF LA PUENTE DOES NOT CONSTITUTE A REPRESENTATION AS TO THE ACCURACY OF THE LOCATION OF OR THE EXISTENCE OR NON-EXISTENCE OF ANY UNDERGROUND UTILITY PIPE, OR STRUCTURE WITHIN THE LIMITS OF THIS PROJECT. THIS NOTE APPLIES TO ALL PAGES. IF WORK IS TO BE DONE IN A STATE HIGHWAY, A PERMIT MUST BE OBTAINED FROM THE STATE OF CALIFORNIA, DIVISION OF HIGHWAYS, 120 SOUTH SPRING STREET, LOS ANGELES, CALIFORNIA.

CITY OF LA PUENTE, CALIFORNIA
 JOHN A. LAMBIE, CITY ENGINEER J. D. PARKHURST, CHIEF ENGINEER
 CO. SAN. DIST. NO. 27
 APPROVED BY: *Richard Cole* ASSISTANT SANITATION ENGINEER APPROVED BY: *J. D. Parkhurst* OFFICE ENGINEER

SUBMITTED BY: *Richard Cole* SAN. DIST. NO. 27
 CHECKED BY: *St. Louis* 3-10-63
 REG. C. E. NO. 2465

NO CONNECTIONS FOR THE DISPOSAL OF INDUSTRIAL WASTES SHALL BE MADE TO SEWERS SHOWN ON THESE DRAWINGS WITHOUT WRITTEN PERMISSION FROM THE CHIEF ENGINEER AND GENERAL MANAGER OF THE COUNTY SANITATION DISTRICTS.



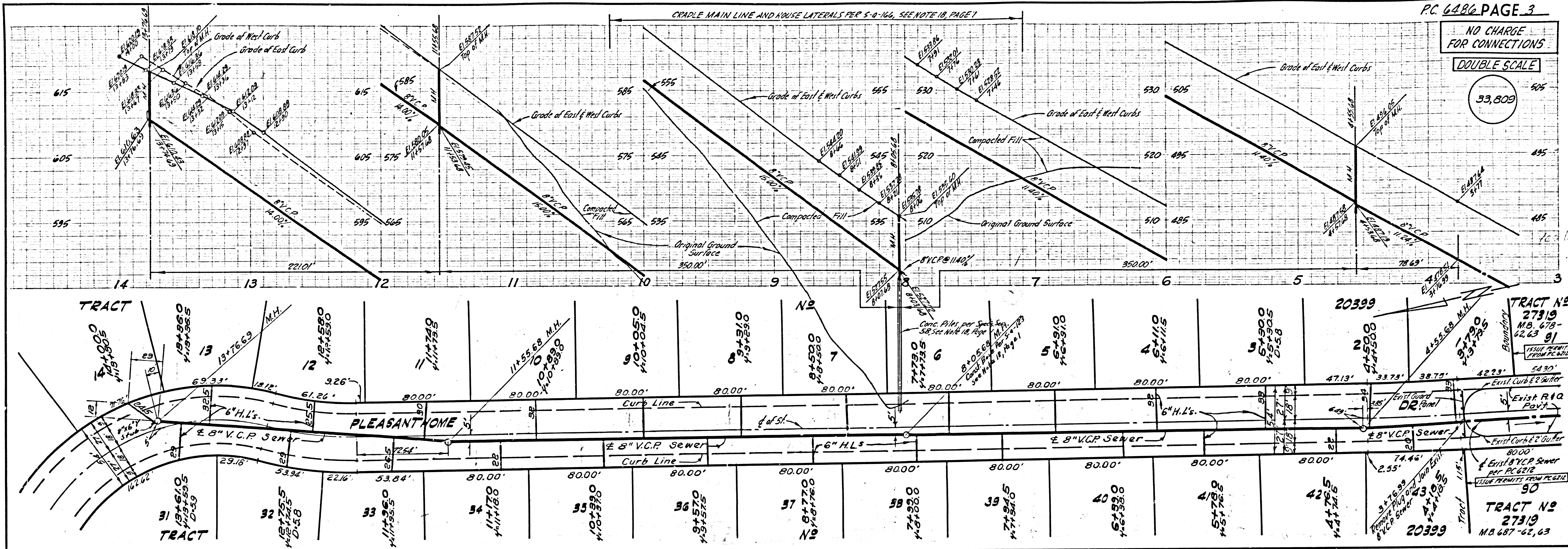
REVISION
 Revised Second H.L. to L.O.P. 96.
 By: *Bob Manning*
 R.E.N. C 11636
 Office of City Engineer
 Date: 8-26-63

NO CHARGE FOR CONNECTIONS
DOUBLE SCALE
 33,807

NO CHARGE FOR CONNECTIONS

DOUBLE SCALE

33,809



NO CHARGE FOR CONNECTIONS

DOUBLE SCALE

33,810

