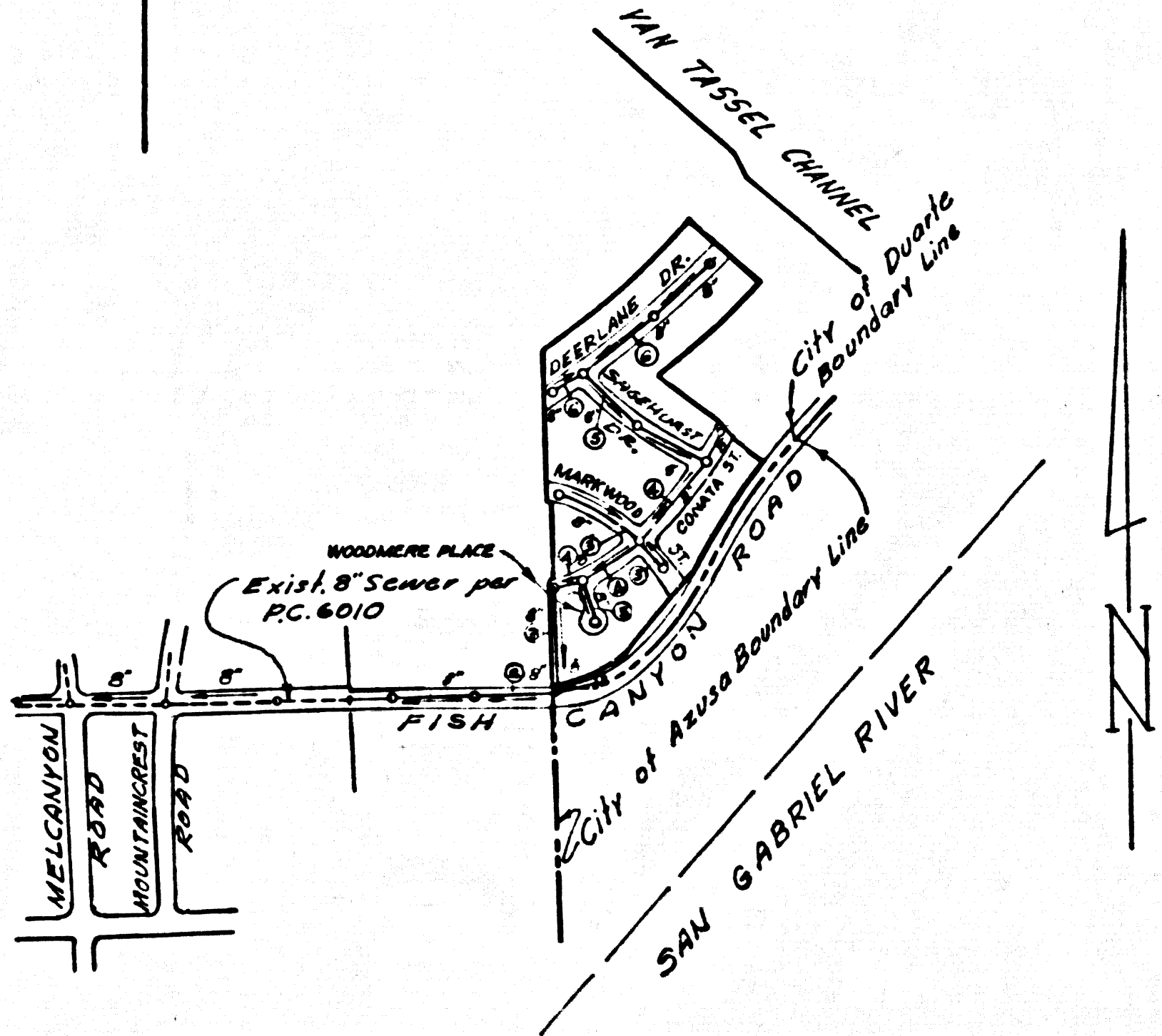


BENCH MARK: Elev. 579.885 S.G. 1584
 U.S.G.S. BRONZE TABLET MKD. "S-57 1923"
 SET IN CONC. 2 3/4" N. & FOOTHILL BLVD.
 1/22' E. & FISH CANYON ROAD
 (BASE LINE QUAD. 1955)



INDEX MAP
 TRACT NO. 21628
 P.C. 6500
 SCALE 1"=600'

REVISIONS:
 1. Page 5-A Lowered curbs and revised grade of main line sewer.
 2. Page 6 Lowered curbs and main line sewer approximately 2 feet.
 APPROVED:
 [Signature] 11-18-63
 Reg. C.E. No. 74521 Date

CITY OF DUARTE BLDG. DIST. NO. 5.02

PROFILE ALIGNMENT AND GRADE OF P.C. 6500
 SANITARY SEWERS PAGE 1
 TO BE CONSTRUCTED IN
 TRACT NO. 21628

- NOTES:
- PROVIDE STAKES ON THE PROPERTY LINE OR PROPERTY LINES PRODUCED AT RIGHT ANGLES TO THE SEWER LINE AT THE CENTER LINE OF EACH MANHOLE.
 - NO REPRESENTATIVE OF THE CITY ENGINEER WILL SURVEY OR LAY OUT ANY PORTION OF THE WORK.
 - THE OWNER OR HIS AUTHORIZED REPRESENTATIVE SHALL FURNISH THE CITY ENGINEER WITH GRADE SHEETS AND STATIONING FOR ALL HOUSE LATERALS AND Y BRANCHES AND SHALL PROVIDE STAKES FOR THEM AT THEIR PROPER LOCATIONS WITH STATIONING PLAINLY MARKED. ALL HOUSE LATERALS SHALL BE CONSTRUCTED IN A STRAIGHT ALIGNMENT AT RIGHT ANGLES FROM THE MAIN LINE SEWER EXCEPT AS SHOWN ON PLANS. ANY CHANGE IN LOCATION SHALL BE REQUESTED IN WRITING BY THE OWNER OR HIS REPRESENTATIVE.
 - THE PRIVATE ENGINEER SHALL FURNISH THE HOUSE LATERAL DEPTH AT THE PROPERTY LINE BELOW THE TOP OF CURS ELEVATION FOR EACH HOUSE LATERAL ON THE GRADE SHEET.
 - NO REVISIONS SHALL BE MADE IN THESE PLANS WITHOUT THE APPROVAL OF THE CITY ENGINEER.
 - USE STANDARD MANHOLE FRAMES AND COVERS, S-117.
 - USE EXTRASTRENGTH PIPE, 12" PIPE STANDARD DEPTH, EXCEPT AS NOTED.
 - MECHANICAL COMPRESSION JOINTS FOR ALL V.C.P. IN MAIN LINE PER SPECS., SECS. 361 & 49.
 - RESURFACE ALL TRENCH WITHIN PAVED AREA TO MEET L.A. COUNTY ROAD DEPT. OR CALIF. STATE HIGHWAY REQUIREMENTS IN ACCORDANCE WITH PERMITS.
 - IF A POWER POLE IS WITHIN 3 FEET OF THE SEWER, THE SEWER SHALL BE ENCASED PER S-8-172, CASE III, TWO FEET ON EITHER SIDE FROM THE POINT OF INTERFERENCE.
 - HOUSE LATERALS TO BE CONSTRUCTED WITH INVERTS AT PROPERTY LINE 6" FEET BELOW CURS GRADE EXCEPT AS NOTED.
 - FOR ALLOWABLE LEAKAGE TEST USE FORMULA NO. 2, SPECS., SEC. 54.
 - MANHOLE TOPS IN UNIMPROVED RIGHTS-OF-WAY TO BE SIX INCHES ABOVE FINISHED GRADE.
 - THE CONTRACTOR SHALL NOTIFY THE CONSTRUCTION DIVISION BY TELEPHONE, 1 ADISON 9-4177, AT 8:00 A.M. AT LEAST TWENTY-FOUR HOURS BEFORE STARTING ANY WORK UNDER THIS CONTRACT.
 - MANHOLES SHALL BE BRICK SEWER STRUCTURES S-8-104, PRECAST CONCRETE MANHOLES PER S-8-105 OR S-8-173 ANY OR USED AS AN ALTERNATIVE IN LOCATIONS APPROVED BY THE CITY ENGINEER.
 - STANDARD SPECIFICATIONS DATED MAY 25, 1962 APPLY IN THE CONSTRUCTION OF THIS PROJECT.
 - USE MECHANICAL COMPRESSION JOINTS FOR ALL HOUSE LATERALS PER SPECS., SEC. 361 & 49.
 - IF DURING THE COURSE OF CONSTRUCTION IT IS DETERMINED THAT THERE IS LESS THAN FOUR FEET OF COVER OVER THE TOP OF A MAIN LINE OR HOUSE LATERAL V.C.P. SEWER WHICH IS NOT INDICATED ON THE PLANS, THE PIPE SHALL BE ENCASED PER S-8-172, CASE III, UNLESS OTHERWISE APPROVED BY THE CITY ENGINEER.
 - ALL STATE AND LOCAL TRENCH SAFETY ORDERS WILL BE RIGIDLY ENFORCED.

PRIVATE CONTRACT NO. 6500

W.S. 47 B-1
 3 SHEETS; 6 PAGES
 SCALE: VERT. 1"=4' FEBRUARY, 1963
 HORIZ. 1"=40'
 PREPARED IN THE OFFICES OF
 ADAMS AND ELLS
 CIVIL ENGINEERS
 REG. C. E. NO. 10880
 FOR LEGEND SEE PLAN NO. S-A-64

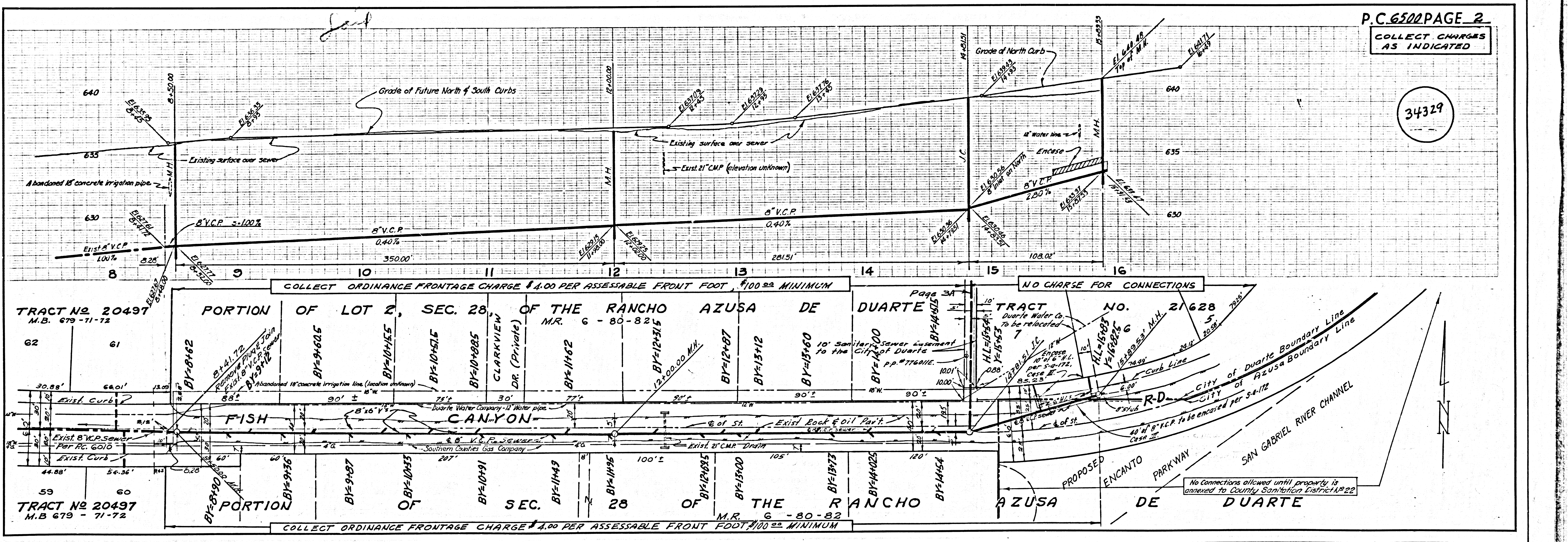
34328

NOTE:
 GRADES TO WHICH THIS IMPROVEMENT IS TO BE CONSTRUCTED ARE SHOWN ON PLANS AND PROFILE. GRADE POINTS FOR TOP OF CURS, CENTER LINE OF STREETS, OR CENTER LINE OF ALLEYS ARE SHOWN BY CIRCLES ON PROFILE. AT ALL POINTS BETWEEN DESIGNATED POINTS THE GRADE SHALL BE ESTABLISHED SO AS TO CONFORM TO A STRAIGHT LINE DRAWN BETWEEN SAID DESIGNATED POINTS.
 ELEVATIONS ARE IN FEET ABOVE U.S.C. & G.S. SEA LEVEL DATUM OF 1929.
 THIS DRAWING AND THE DATA HEREON ARE HEREBY MADE A PART OF THE SPECIFICATIONS.
 WORK SHALL BE CONSTRUCTED ACCORDING TO SPECIFICATIONS ON FILE IN THE OFFICE OF THE CITY ENGINEER AND SHALL BE PROSECUTED ONLY IN THE PRESENCE OF THE CITY ENGINEER.
 BEFORE WORK CAN BE STARTED, THE CONTRACTOR MUST OBTAIN A PERMIT TO EXCAVATE IN CITY STREETS FROM THE L.A. COUNTY ROAD DEPT., DISTRICT OFFICE NO. 1, 1534 E. 154th ST., QUARTER 2, SUFFICIENT TO COVER THE COST OF CONSTRUCTION INSPECTION AND RECORD PLANS.
 APPROVAL OF THIS PLAN BY THE CITY OF DUARTE DOES NOT CONSTITUTE A REPRESENTATION AS TO THE ACCURACY OF THE LOCATION OF OR THE EXISTENCE OR NON-EXISTENCE OF ANY UNDERGROUND UTILITY PIPE, OR STRUCTURE WITHIN THE LIMITS OF THIS PROJECT. THIS NOTE APPLIES TO ALL PAGES.
 IF WORK IS TO BE DONE IN A STATE HIGHWAY, A PERMIT MUST BE OBTAINED FROM THE STATE OF CALIFORNIA, DIVISION OF HIGHWAYS, 126 SOUTH SPRING STREET.

COLLECT CHARGES AS INDICATED
 Robert Power 7/22/63

CITY OF AZUSA
 APPROVED: Robert K. [Signature]
 City Engineer
 Date: July 24, 1963

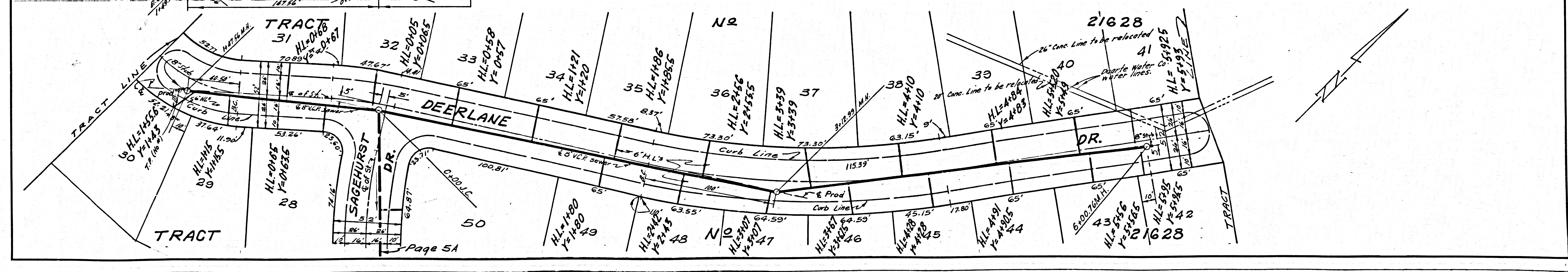
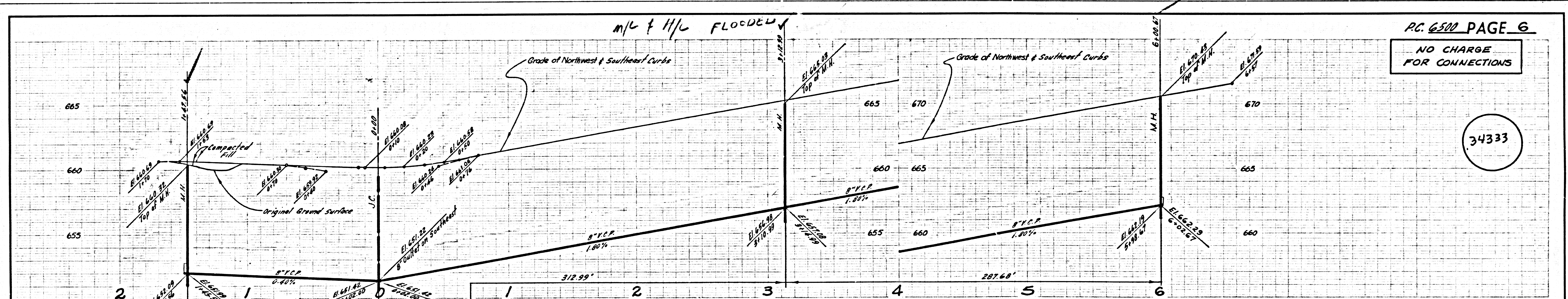
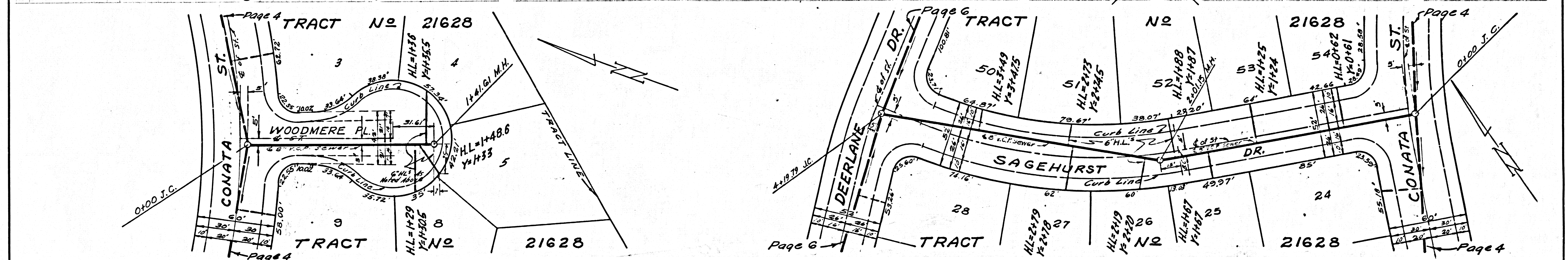
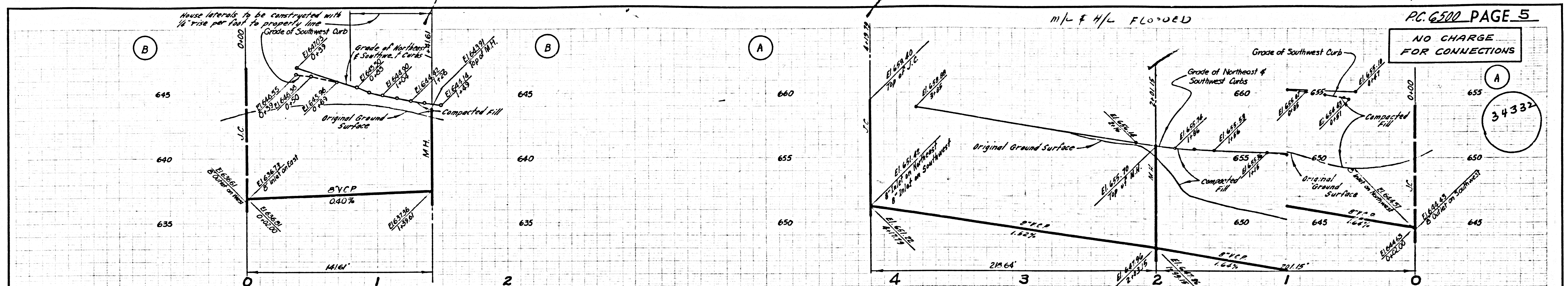
CITY OF DUARTE, CALIFORNIA
 APPROVED, JOHN A. LAMBIE, CITY ENGINEER APPROVED, JOHN D. PARKHURST, CHIEF ENGINEER
 D.D. SAN. DIST. NO. 22
 BY: [Signature] ASST. SANITATION ENGINEER BY: [Signature] OFFICE ENGINEER
 CHECKED BY: [Signature] OFFICE OF CITY ENGINEER, REG. C. E. NO. 74521
 SUBMITTED: [Signature] REGIONAL ENGINEER



P.C. 6500 PAGE 2
 COLLECT CHARGES AS INDICATED

34328

BSAIS 2A TRACT 1



85015 04 TRACT 3A