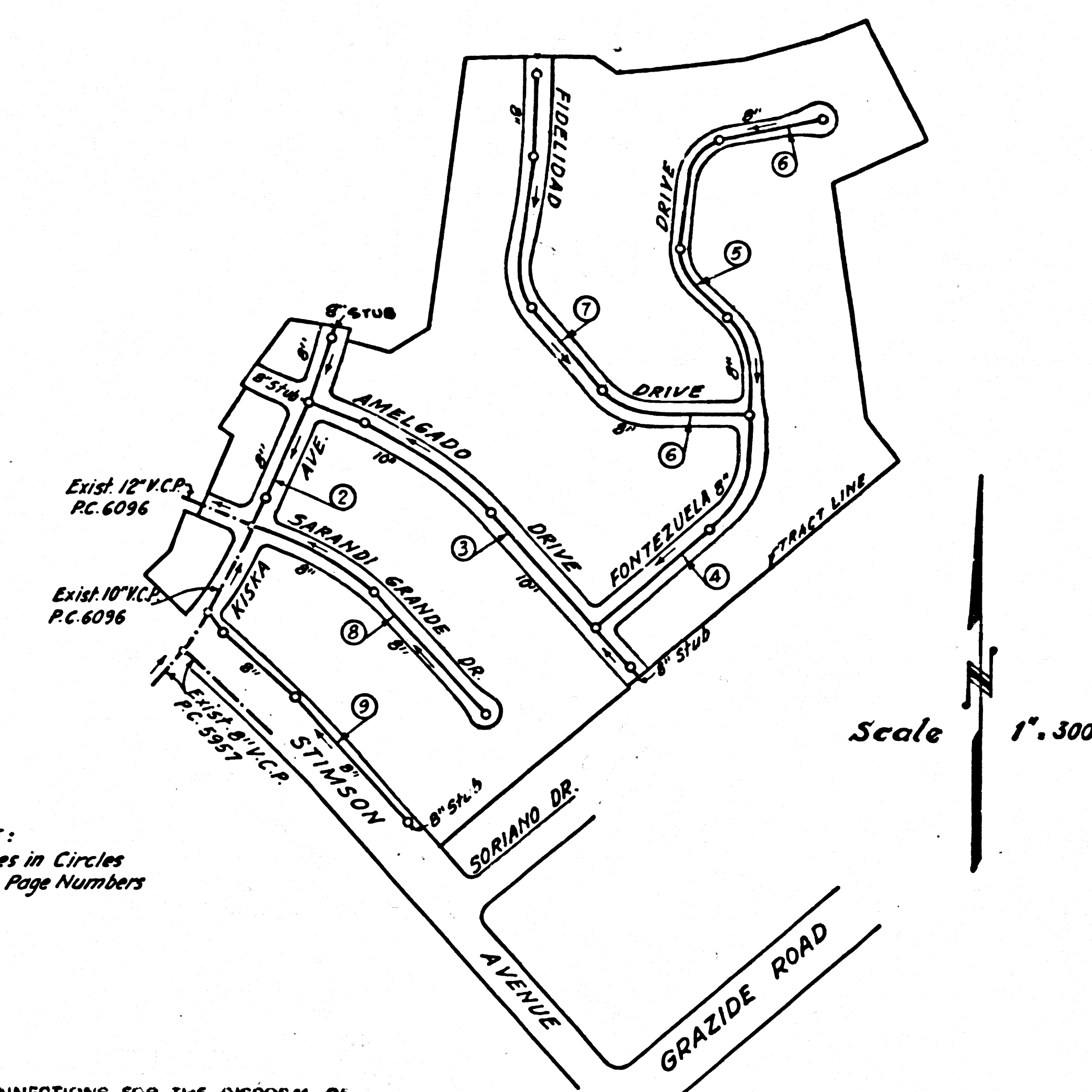


B.M. S.G. 1705 ELEV. 550.710'
 2" I.P. with County Engineers lag at
 Centerline Intersection of existing
 Hacienda Blvd. & prop. Centerline of
 Luiswitar. Rt. 12" dia. C.S.S. Prelim. adj.
 WHITTIER QUAD. 1955



NOTE:
 Figures in Circles
 Denote Page Numbers

INDEX MAP
 TRACT NO. 27178
 P.C. 6506

REVISIONS:
 8" V.C.P. FROM STA. 10+60.24
 TO 11+99.18 @ 1.64% GRADE
 (PAGE 3) CHANGED TO 10" V.C.P.
 @ 1.68% GRADE.
 APPROVED *[Signature]* 5-14-63
 REG. C.E. NO. 11637

NO DIRECTIONS FOR THE DISPOSAL OF
 INDUSTRIAL WASTES SHALL BE MADE TO
 SEWERS SHOWN ON THESE DRAWINGS
 WITHOUT WRITTEN PERMISSION FROM THE
 CHIEF ENGINEER AND GENERAL MANAGER
 OF THE COUNTY SANITATION DISTRICTS.

DOUBLE SCALE
 PUENTE BLDG. DIST. NO. 2

PROFILE ALIGNMENT AND GRADE OF
 SANITARY SEWERS PAGE 1
 TO BE CONSTRUCTED IN

TRACT NO. 27178
 PRIVATE CONTRACT NO. 6506

W.S. 38
 5 SHEETS, 9 PAGES
 SCALE: VERT. 1" = 6'
 HORIZ. 1" = 40'
 DATE: MARCH, 1963
 PREPARED IN THE OFFICES OF
 AMCO ENGINEERING
 8844 OLYMPIC BLVD. S.H.
 BY *[Signature]* 2-15-63
 J. GEORGE ARAUO REG. C.E. NO. 11467
 FOR LEGEND SEE PLAN NO. S-6-64

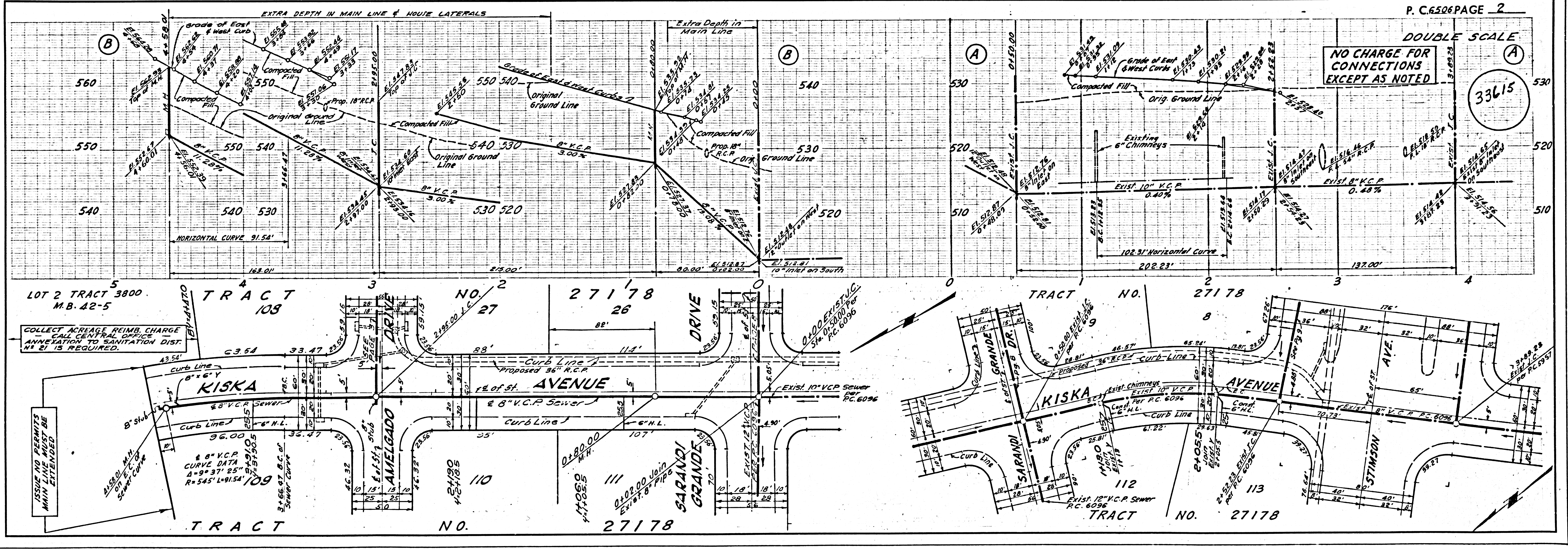
- NOTES:
- PROVIDE STAKES ON THE PROPERTY LINE OR PROPERTY LINES PRODUCED AT RIGHT ANGLES TO THE SEWER LINE AT THE CENTER LINE OF EACH MANHOLE.
 - NO REPRESENTATIVE OF THE COUNTY ENGINEER WILL SURVEY OR LAY OUT ANY PORTION OF THE WORK.
 - THE PRIVATE ENGINEER SHALL FURNISH THE COUNTY ENGINEER WITH GRADE SHEETS AND STATIONING FOR ALL HOUSE LATERALS AND Y BRANCHES AND SHALL PROVIDE STAKES FOR THEM AT THEIR PROPER LOCATIONS WITH STATIONING PLAINLY MARKED. ALL HOUSE LATERALS SHALL BE CONSTRUCTED IN A STRAIGHT ALIGNMENT AT RIGHT ANGLES FROM THE MAIN LINE SEWER EXCEPT AS SHOWN ON THE PLANS. HOUSE LATERALS FROM CHIMNEYS SHALL NOT HAVE AN ANGLE OF LESS THAN 45° WITH THE MAIN LINE SEWER. ANY CHANGE IN ALIGNMENT SHALL BE REQUESTED BY WRITING BY THE PRIVATE ENGINEER.
 - THE PRIVATE ENGINEER SHALL FURNISH THE HOUSE LATERAL DEPTH AT THE PROPERTY LINE BELOW THE TOP OF CURB ELEVATION FOR EACH HOUSE LATERAL ON THE GRADE SHEET.
 - NO REVISIONS SHALL BE MADE IN THESE PLANS WITHOUT THE APPROVAL OF THE COUNTY ENGINEER.
 - THE CONTRACTOR SHALL NOTIFY THE CONSTRUCTION DIVISION BY TELEPHONE, MADISON 9-4747, EXT. 8151, AT LEAST TWENTY-FOUR HOURS BEFORE STARTING ANY WORK UNDER THIS CONTRACT.
 - MANHOLES SHALL BE BRICK SEWER STRUCTURES PER S-6-704. PRECAST CONCRETE MANHOLES PER S-6-135 OR S-6-173 MAY BE USED AS AN ALTERNATE IN LOCATIONS APPROVED BY THE COUNTY ENGINEER.
 - USE STANDARD MANHOLE FRAMES AND COVERS, S-6-107
 - MANHOLE TOPS IN UNIMPROVED RIGHTS-OF-WAY TO BE SIX INCHES ABOVE FINISHED GRADE.
 - USE EXTRA STRENGTH PIPE, ALL PIPE IS STANDARD SLOPE EXCEPT AS NOTED.
 - USE MECHANICAL COMPRESSION JOINTS FOR ALL V.C.P. JOINTS PER SPEC., SECS. 34 & 46, 49
 - IF A POWER POLE IS WITHIN THREE FEET OF THE SEWER, THE SEWER SHALL BE ENCASED, PER S-6-172, CASE II, TWO FEET ON EACH SIDE FROM THE POINT OF INTERFERENCE.
 - IF DURING THE COURSE OF CONSTRUCTION IT IS DETERMINED THAT THERE IS LESS THAN FOUR FEET OF COVER OVER THE TOP OF A MAIN LINE OR HOUSE LATERAL V.C.P. SEWER WHICH IS NOT INDICATED ON THE PLANS, THE PIPE SHALL BE ENCASED PER S-6-172, CASE III, UNLESS OTHERWISE APPROVED BY THE COUNTY ENGINEER.
 - HOUSE LATERALS TO BE CONSTRUCTED WITH INVERTS AT PROPERTY LINE... FEET BELOW CURB GRADE EXCEPT AS NOTED.
 - RESURFACE ALL TRENCHES WITHIN PAVED AREAS TO MEET L.A. COUNTY ROAD DEPT. OR CALIFORNIA STATE HIGHWAY REQUIREMENTS IN ACCORDANCE WITH PERMITS.
 - FOR ALLOWABLE LEAKAGE TEST USE FORMULA NO. 2, SPECS. SEC. 54.
 - STANDARD SPECIFICATIONS DATED MAY 25, 1962 SHALL APPLY IN THE CONSTRUCTION OF THIS PROJECT.
 - SEWERS IN FILLED GROUND
 NO CONSTRUCTION WILL BE PERMITTED IN FILLED AREA UNLESS ACCEPTABLE CERTIFICATION IS SUBMITTED TO THE CONSTRUCTION DIVISION OF THE COUNTY ENGINEERS DEMONSTRATING THAT RELATIVE COMPACTION IS GREATER THAN 80%.
 a) CONSTRUCTION IS LESS THAN 90% THE SEWER MUST BE GRADED AS SHOWN IN THE PLANS PER S-6-166 OR A SPECIAL BASE COURSE PER S-6-170 CASE III, SPECIAL MANHOLE BASES MUST BE INSTALLED PER S-6-163 AS INDICATED ON THE PLANS.
 b) IF CONSTRUCTION IS GREATER THAN 90% NEITHER GRADING NOR SPECIAL MANHOLES BASES WILL BE REQUIRED.
 c) ALL FILL TO BE IN PLACE BEFORE SEWERS ARE CONSTRUCTED.
 d) ALL STATE AND LOCAL TRENCH SAFETY ORDERS WILL BE RIGIDLY ENFORCED.

COLLECT CHARGES
 AS INDICATED
[Signature] 3/27/63

ISSUE NO HOUSE
 CONNECTION PERMITS UNTIL
 P.C. 6096 IS ACCEPTED

NOTE:
 GRADES TO WHICH THIS IMPROVEMENT IS TO BE CONSTRUCTED ARE SHOWN ON PLANS AND PROFILES. GRADE POINTS FOR TOP OF CURBS, CENTER LINE OF STREETS, OR CENTER LINE OF ALLEYS ARE SHOWN BY CIRCLES ON PROFILES. AT ALL POINTS BETWEEN DESIGNATED POINTS THE GRADE SHALL BE ESTABLISHED SO AS TO CONFORM TO A STRAIGHT LINE DRAWN BETWEEN SAID DESIGNATED POINTS. ELEVATIONS ARE IN FEET ABOVE U.S.C. & G.S. MEAN LEVEL DATUM OF 1929.
 THIS DRAWING AND THE DATA HEREON ARE HEREBY MADE A PART OF THE SPECIFICATIONS.
 THE WORK SHALL BE CONSTRUCTED ACCORDING TO STANDARD SPECIFICATIONS DATED, MAY 25, 1962, ON FILE IN THE OFFICE OF THE COUNTY ENGINEER AND SHALL BE PROTECTED ONLY IN THE PRESENCE OF THE COUNTY ENGINEER.
 BEFORE WORK CAN BE STARTED, THE CONTRACTOR MUST OBTAIN A PERMIT TO LOCATE IN COUNTY STREETS FROM THE L.A. COUNTY ROAD DEPT., DISTRICT OFFICE NO. 1, AND PAY A FEE TO THE COUNTY ENGINEER, ROOM 30, COUNTY ENGINEERING BUILDING, 100 WEST SECOND STREET OR SAN DIMAS REGIONAL OFFICE, SUFFICIENT TO COVER THE COST OF CONSTRUCTION INSPECTORIAL AND SECOND PLANS.
 APPROVAL OF THIS PLAN BY THE COUNTY OF LOS ANGELES DOES NOT CONSTITUTE A REPRESENTATION AS TO THE ACCURACY OF THE LOCATION OF OR THE EXISTENCE OR NON-EXISTENCE OF ANY UNDERGROUND UTILITY PIPE, OR STRUCTURE WITHIN THE LIMITS OF THIS PROJECT. THIS NOTE APPLIES TO ALL PAGES.
 IF WORK IS TO BE DONE IN A STATE HIGHWAY, A PERMIT MUST BE OBTAINED FROM THE STATE OF CALIFORNIA, DIVISION OF HIGHWAYS, 126 SOUTH SPRING STREET, LOS ANGELES, CALIFORNIA.

COUNTY OF LOS ANGELES, CALIFORNIA
 JOHN A. LAMBIE, COUNTY ENGINEER
 J. D. PARKHURST, CHIEF ENGINEER
 CO. SAN. DIST. NO. 2
 APPROVED BY *[Signature]* OFFICE ENGINEER
 SUBMITTED BY *[Signature]* SAN DIMAS REGIONAL ENGINEER
 CHECKED BY *[Signature]* REG. C.E. NO. 3404
 J.N. 0359.93

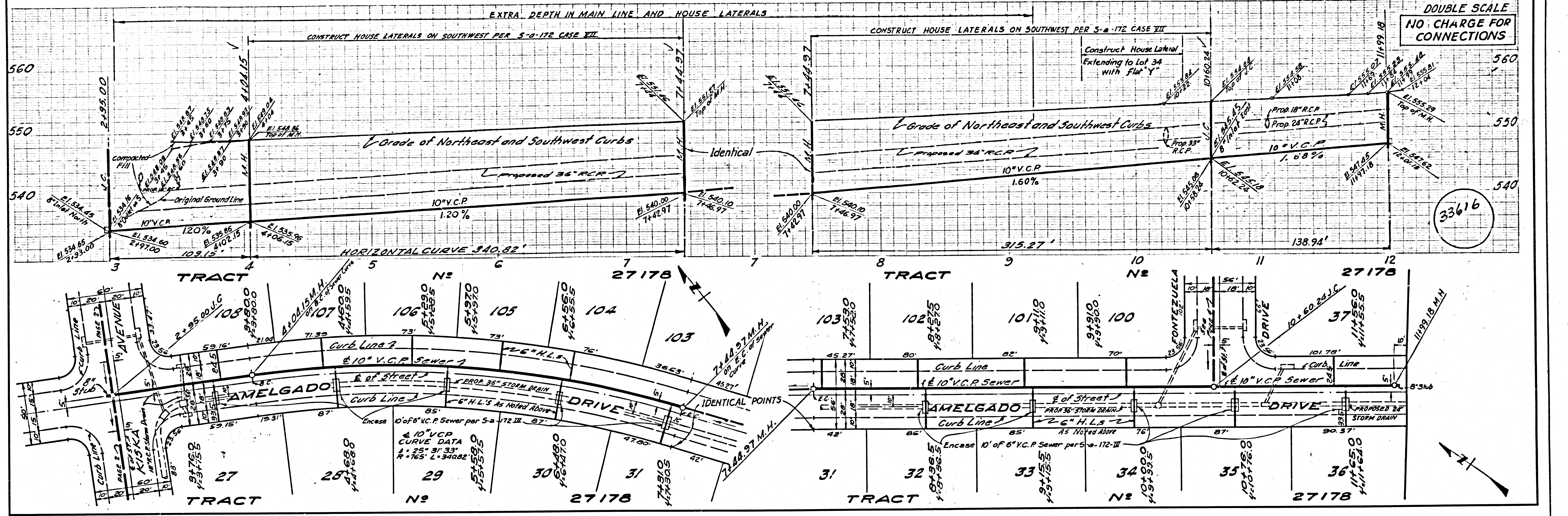


COLLECT ACCEGE REIMB. CHARGE
 CALL CENTRAL OFFICE
 ANNEXATION TO SANITATION DIST.
 NO. 21 IS REQUIRED.

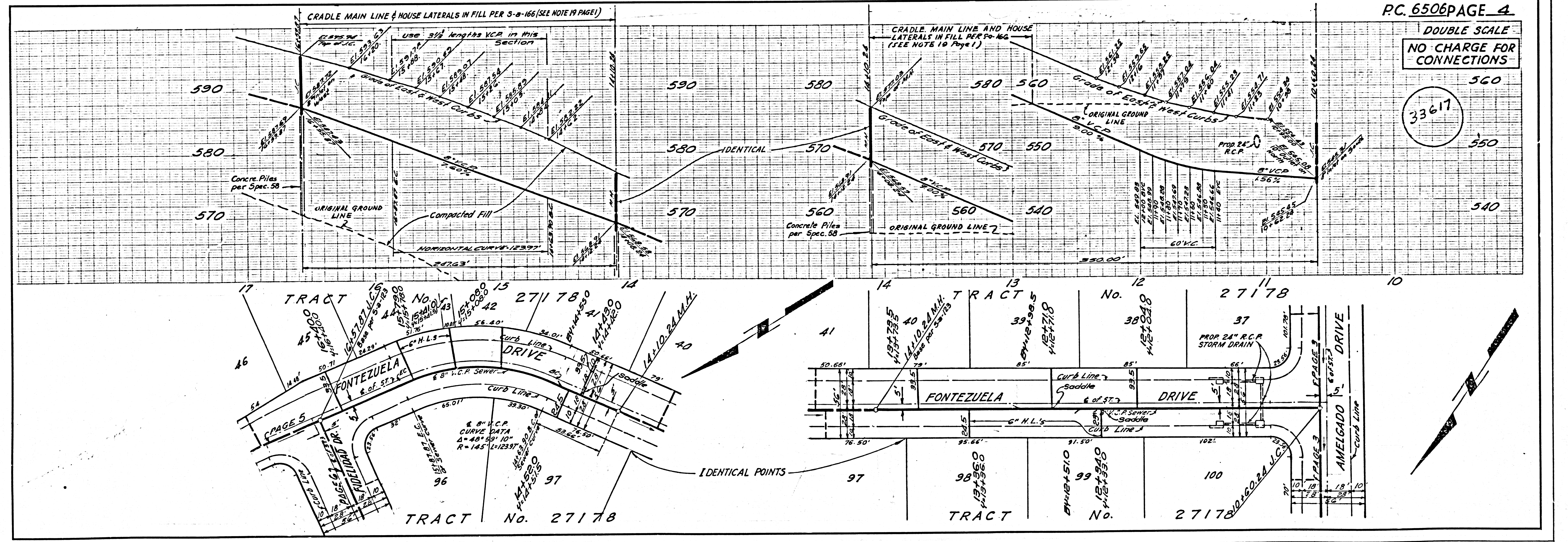
ISSUE NO PERMITS
 MAIN LATERALS
 UNLESS

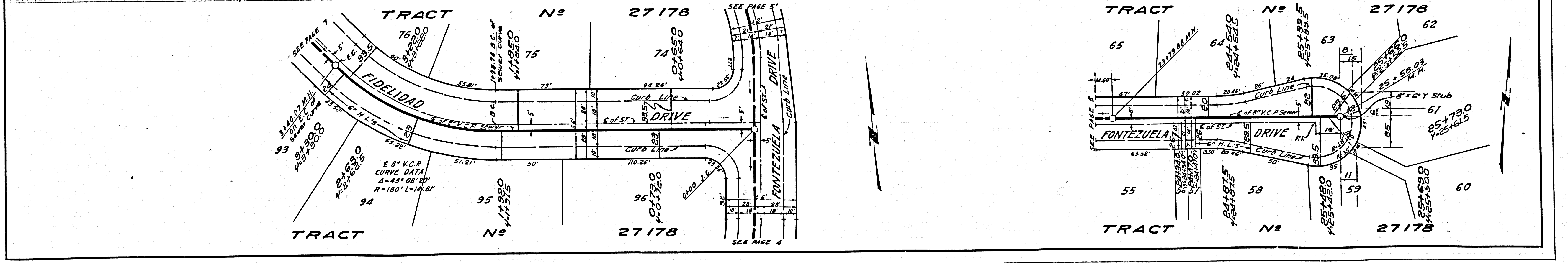
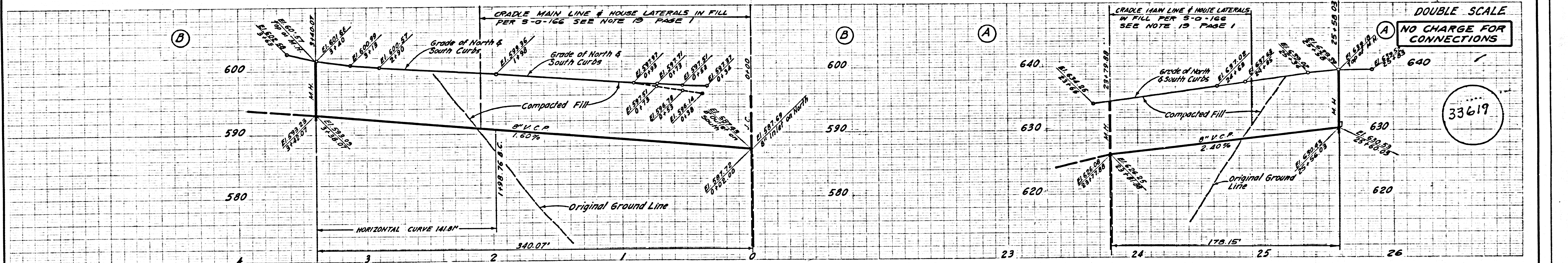
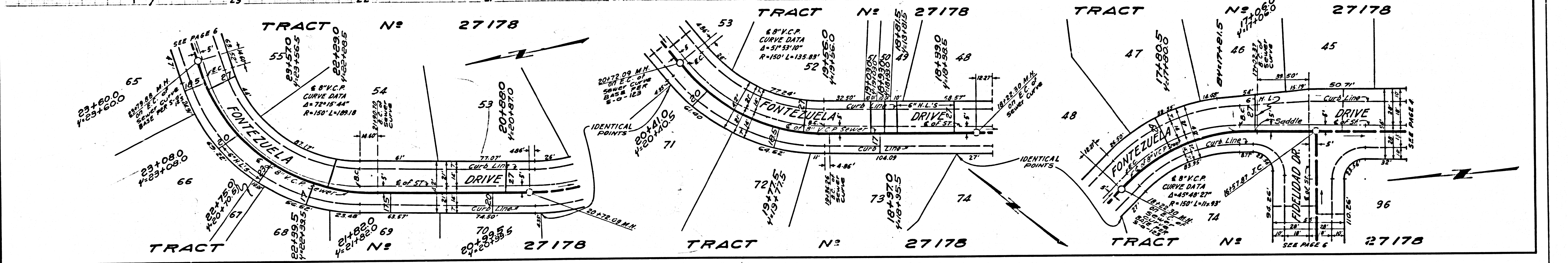
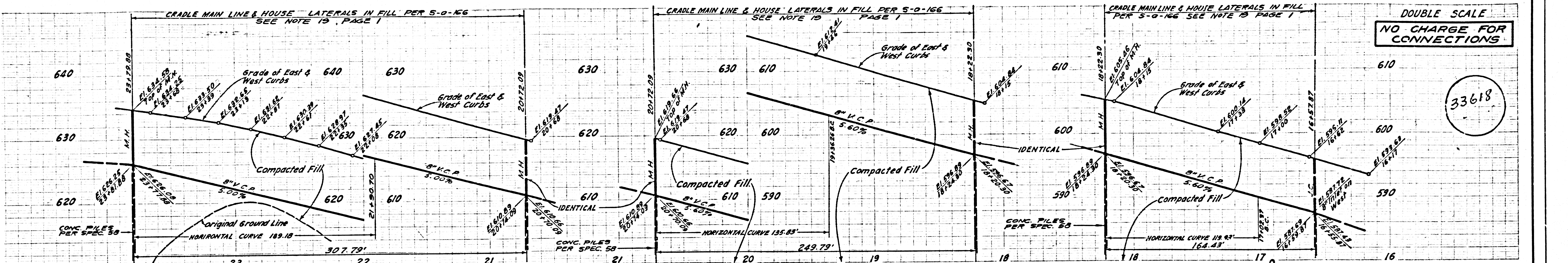
DOUBLE SCALE
 NO CHARGE FOR
 CONNECTIONS
 EXCEPT AS NOTED

DOUBLE SCALE
NO CHARGE FOR
CONNECTIONS



DOUBLE SCALE
NO CHARGE FOR
CONNECTIONS





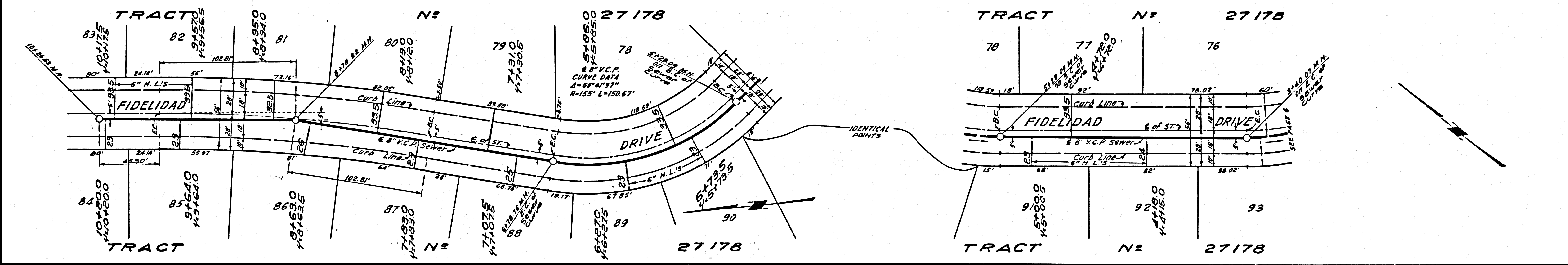
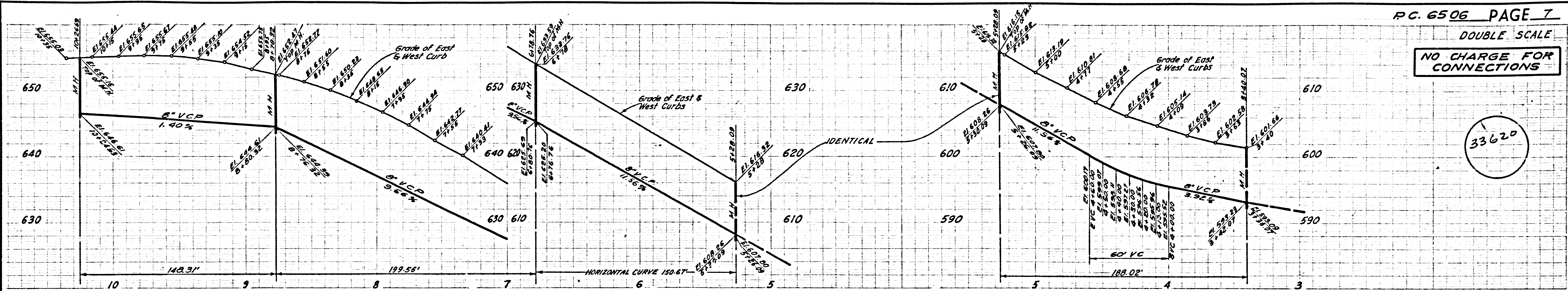
PC 6506

TRACT No. 27178

DOUBLE SCALE

NO CHARGE FOR CONNECTIONS

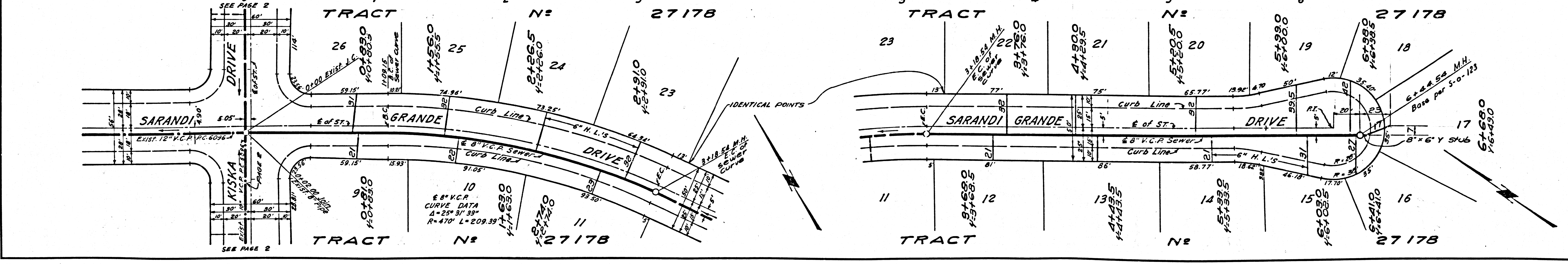
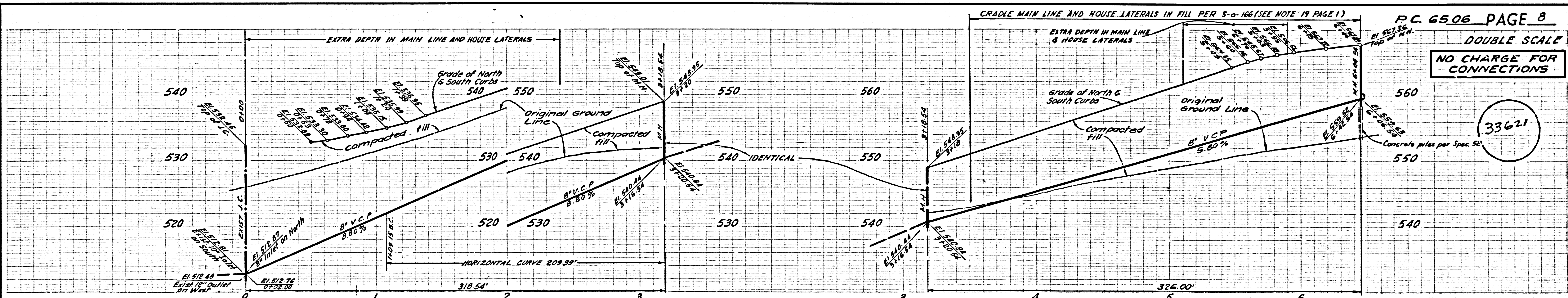
33620



DOUBLE SCALE

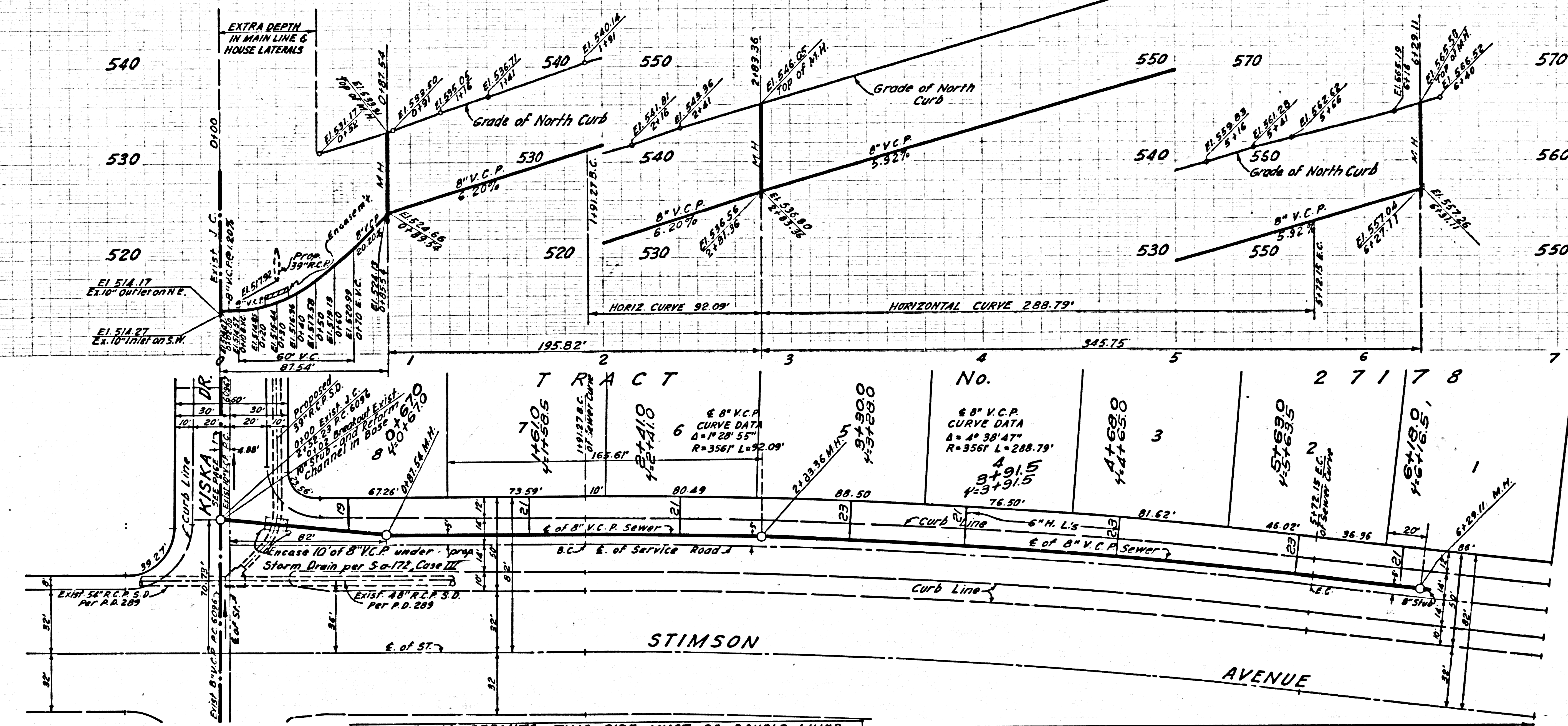
NO CHARGE FOR CONNECTIONS

33621



NO CHARGE FOR CONNECTIONS

33622



ISSUE NO PERMITS - THIS SIDE MUST BE DOUBLE LINED