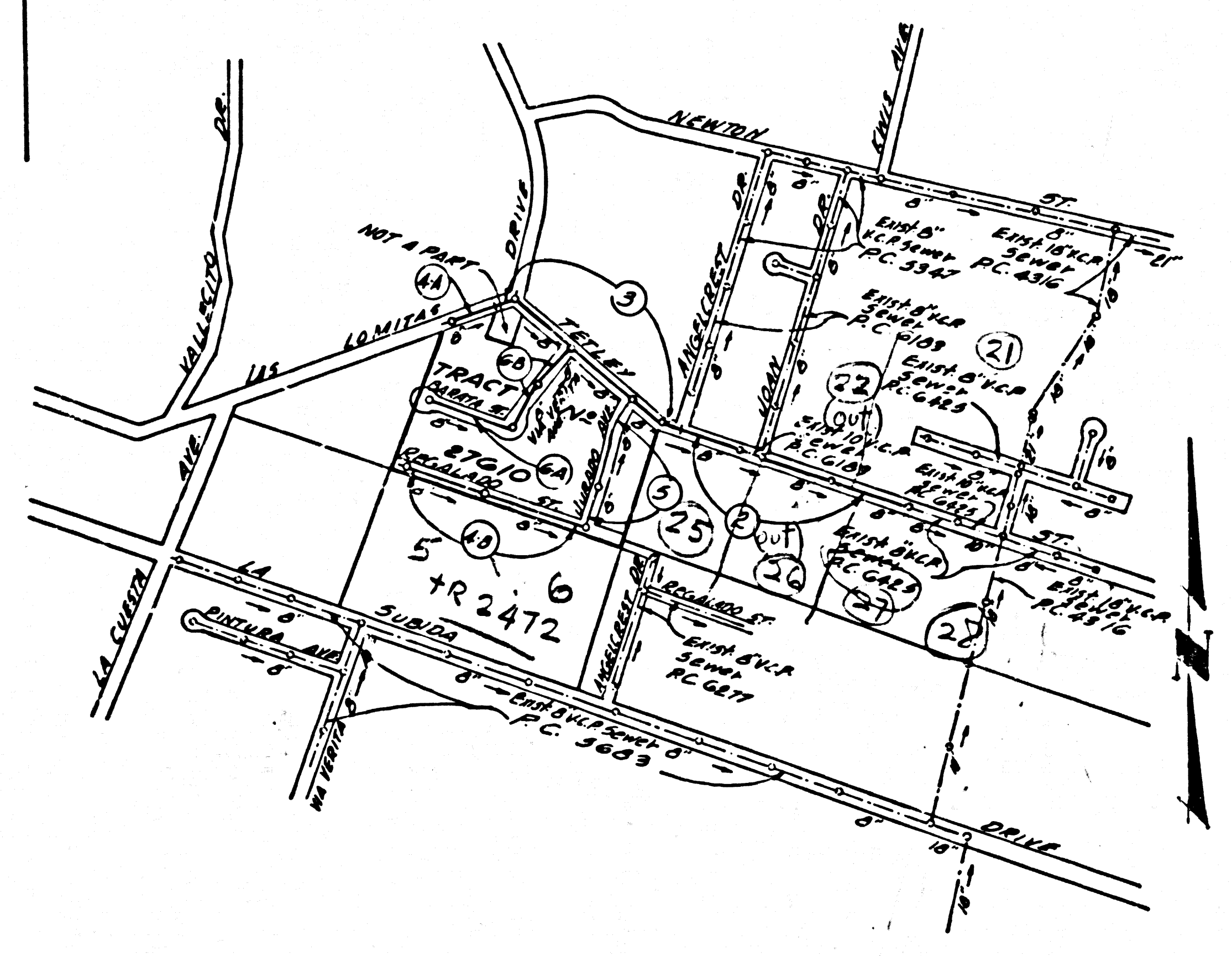


B.M. 56 1619 ELEV. 420.294
 1.20 N. IN 30' CB. OF NEWTON ST.
 2.5' N. OF INT. TO PLAY FARD
 2.35' N. OF KNIS AND E. L. 20
 30' OF 1/4 NEWTON ST.
 WHITTIER QUAD. 19 23



INDEX MAP
 TRACT No. 27610
 P.C. 6509
 SCALE: 1" = 600'

NOTE:
 The existence and approximate location of underground utilities or structures shown on these plans were determined by a search of the available public records. To the best of our knowledge there are no existing underground utilities or structures except as shown on these plans.
 The Contractor is required to take due precautionary measures to protect the utilities or structures at the site. It shall be the contractor's responsibility to notify the owners of the utilities or structures concerned before starting work.

ISSUE NO HOUSE CONNECTION PERMITS UNTIL P.C. 6425 IS COMPLETED

LA PUENTE BLDG. DIST. NO. 2

TO BE CONSTRUCTED IN
TRACT No. 27610
PRIVATE CONTRACT NO. 6509

W.S. 37 & 38
 9 SHEETS, 2 PAGES
 SCALE: VERT. 1" = 4' HORIZ. 1" = 40'
 FEBRUARY, 1963
 PREPARED IN THE OFFICES OF
HEMMER ENGR. CO. INC.
 123 NO. PAINTER AVE. WHITTIER, CALIF.
 BY *Robert P. Flouza*
 REG. C. E. NO. 11249

33628

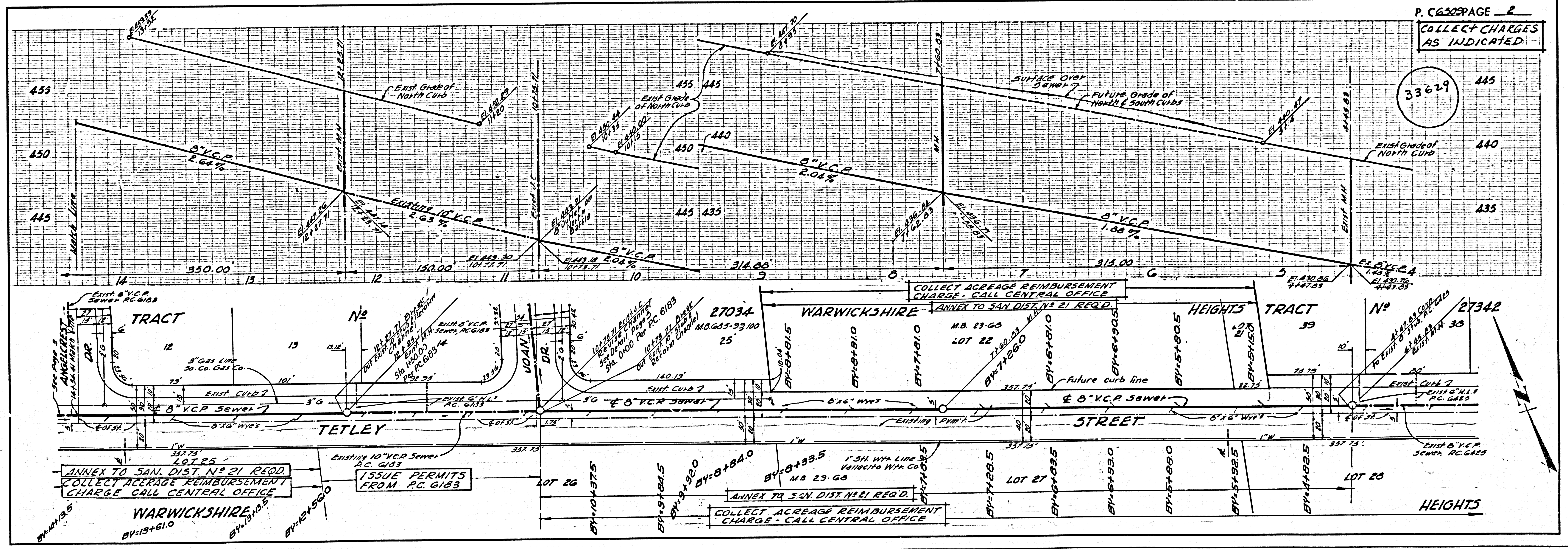
- NOTE:**
1. PROVIDE STAKES ON THE PROPERTY LINE OR PROPERTY LINES PRODUCED AT RIGHT ANGLES TO THE SEWER LINE AT THE CENTER LINE OF EACH MANHOLE.
 2. NO REPRESENTATIVES OF THE COUNTY ENGINEER WILL SURVEY OR LAY OUT ANY PORTION OF THE WORK.
 3. THE PRIVATE ENGINEER SHALL FURNISH THE COUNTY ENGINEER WITH GRADE SHEETS AND STATIONING FOR ALL HOUSE LATERALS AND Y BRANCHES AND SHALL PROVIDE STAKES FOR THEM AT THEIR PROPER LOCATIONS WITH STATIONING PLAINLY MARKED. ALL HOUSE LATERALS SHALL BE CONSTRUCTED IN A STRAIGHT ALIGNMENT AT RIGHT ANGLES FROM THE MAIN LINE SEWER EXCEPT AS SHOWN ON THE PLANS. HOUSE LATERALS FROM CHIMNEYS SHALL NOT HAVE AN ANGLE OF LESS THAN 45° WITH THE MAIN LINE SEWER. ANY CHANGE IN ALIGNMENT SHALL BE REQUESTED IN WRITING BY THE PRIVATE ENGINEER.
 4. THE PRIVATE ENGINEER SHALL FURNISH THE HOUSE LATERAL DEPTH AT THE PROPERTY LINE BELOW THE TOP OF CURB ELEVATION FOR EACH HOUSE LATERAL ON THE GRADE SHEET.
 5. NO REVISIONS SHALL BE MADE IN THESE PLANS WITHOUT THE APPROVAL OF THE COUNTY ENGINEER.
 6. THE CONTRACTOR SHALL NOTIFY THE CONSTRUCTION DIVISION BY TELEPHONE, MADISON 9-4747, EXT. 81551, AT LEAST TWENTY-FOUR HOURS BEFORE STARTING ANY WORK UNDER THIS CONTRACT.
 7. MANHOLES SHALL BE BRICK SEWER STRUCTURES PER S-104. PRECAST CONCRETE MANHOLES PER S-133 OR S-173 MAY BE USED AS AN ALTERNATE IN LOCATIONS APPROVED BY THE COUNTY ENGINEER.
 8. USE STANDARD MANHOLE FRAMES AND COVERS, S-117.
 9. USE EXTRA STRENGTH PIPE, ALL PIPE IS STANDARD DEPTH.
 10. USE MECHANICAL COMPRESSION JOINTS FOR ALL V.C.P. JOINTS PER SPECS. SEC. 34, 4, & 45.
 11. IF A POWER POLE IS WITHIN THREE FEET OF THE SEWER, THE SEWER SHALL BE ENCASED, PER S-172, CASE III, TWO FEET ON EITHER SIDE FROM THE POINT OF INTERFERENCE.
 12. IF DURING THE COURSE OF CONSTRUCTION IT IS DETERMINED THAT THERE IS LESS THAN FOUR FEET OF COVER OVER THE TOP OF A MAIN LINE OR HOUSE LATERAL V.C.P. SEWER WHICH IS NOT INDICATED ON THE PLANS, THE PIPE SHALL BE ENCASED PER S-172, CASE III, UNLESS OTHERWISE APPROVED BY THE COUNTY ENGINEER.
 13. HOUSE LATERALS TO BE CONSTRUCTED WITH INVERTS AT PROPERTY LINE ... 6" FEET BELOW CURB GRADE.
 14. RESURFACE ALL TRENCHES WITHIN PAVED AREAS TO MEET L.A. COUNTY ROAD DEPT. OR CALIFORNIA STATE HIGHWAY REQUIREMENTS IN ACCORDANCE WITH PERMITS.
 15. FOR ALLOWABLE USAGE TEST USE FORMULA NO. 2, SPECS. SEC. 34.
 16. ALL STATE AND LOCAL TRAFFIC SAFETY ORDERS WILL BE RIGIDLY ENFORCED.

NO CONNECTIONS FOR THE DISPOSAL OF INDUSTRIAL WASTES SHALL BE MADE TO SEWERS SHOWN ON THESE DRAWINGS WITHOUT WRITTEN PERMISSION FROM THE CHIEF ENGINEER AND GENERAL MANAGER OF THE COUNTY SANITATION DISTRICTS.
COLLECT CHARGES AS INDICATED
 PR Smith

NOTE:
 GRADES TO WHICH THIS IMPROVEMENT IS TO BE CONSTRUCTED ARE SHOWN ON PLANS AND PROFILE. GRADE POINTS FOR TOP OF CURBS, CENTER LINE OF STREETS, OR CENTER LINE OF ALLEYS ARE SHOWN BY CIRCLES ON PROFILES. AT ALL POINTS BETWEEN DESIGNATED POINTS THE GRADE SHALL BE ESTABLISHED SO AS TO CONFORM TO A STRAIGHT LINE DRAWN BETWEEN SAID DESIGNATED POINTS. ELEVATIONS ARE IN FEET ABOVE U.S.C. & G.S. SEA LEVEL DATUM OF 1929. THIS DRAWING AND THE DATA HEREON ARE HEREBY MADE A PART OF THE SPECIFICATIONS. WORK SHALL BE CONSTRUCTED ACCORDING TO STANDARD SPECIFICATIONS DATED MAY 23, 1962, ON FILE IN THE OFFICE OF THE COUNTY ENGINEER AND SHALL BE PROSECUTED ONLY IN THE PRESENCE OF THE COUNTY ENGINEER. BEFORE WORK CAN BE STARTED, THE CONTRACTOR MUST OBTAIN A PERMIT TO EXCAVATE IN COUNTY STREETS FROM THE L.A. COUNTY ROAD DEPT., DISTRICT OFFICE NO. 1000, 100 WEST SECOND STREET, LOS ANGELES, CALIF. BEFORE WORK CAN BE STARTED. APPROVAL OF THIS PLAN BY THE COUNTY OF LOS ANGELES DOES NOT CONSTITUTE A REPRESENTATION AS TO THE ACCURACY OF THE LOCATION OF OR THE EXISTENCE OR NON-EXISTENCE OF ANY UNDERGROUND UTILITY PIPE, OR STRUCTURE WITHIN THE LIMITS OF THIS PROJECT. THIS NOTE APPLIES TO ALL FIGURES. IF WORK IS TO BE DONE IN A STATE HIGHWAY, A PERMIT MUST BE OBTAINED FROM THE STATE OF CALIFORNIA, DIVISION OF HIGHWAYS, 129 SOUTH SPRING STREET, LOS ANGELES, CALIFORNIA.

COUNTY OF LOS ANGELES, CALIFORNIA
 JOHN A. LAMBIE, CHIEF ENGINEER
 APPROVED BY: *Richard Klein* ASSISTANT SANITATION ENGINEER
 APPROVED BY: *[Signature]* OFFICE ENGINEER
 SUBMITTED BY: *[Signature]* SANITATION REGIONAL ENGINEER
 CHECKED BY: *[Signature]* 5-22-63
 REG. C. E. NO. 12583

J.N. 03: 9-96



P. C. 6509 PAGE 2
COLLECT CHARGES AS INDICATED

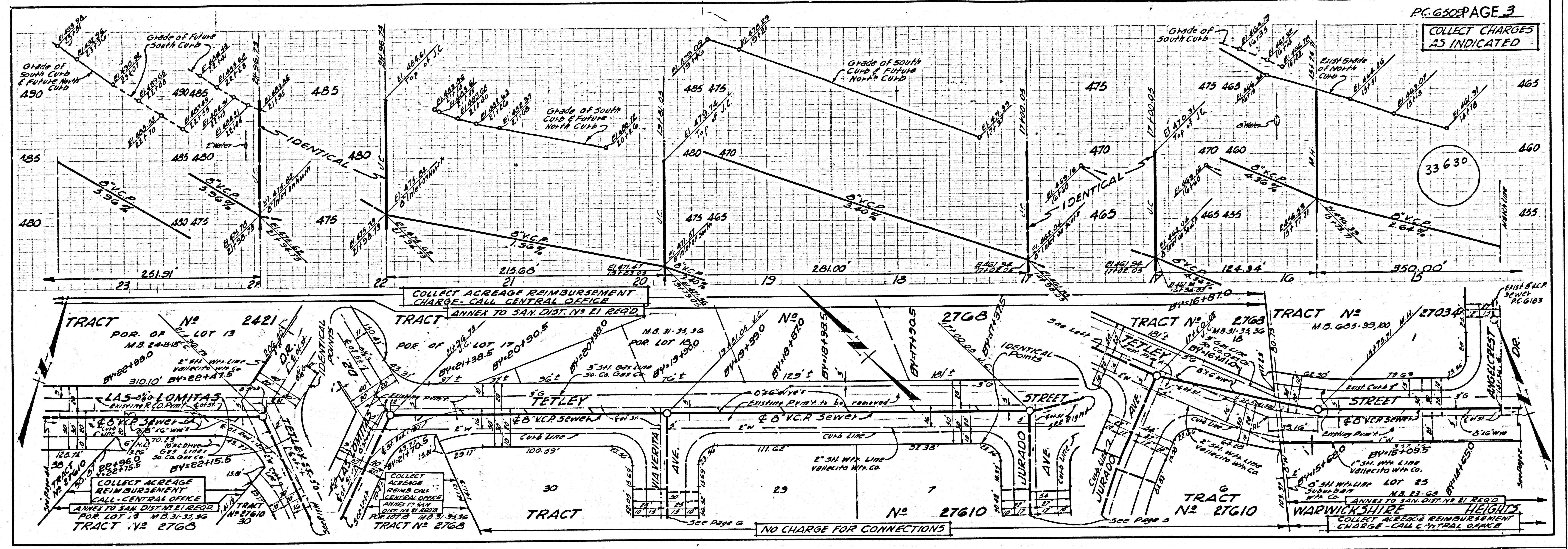
33629

ANNEX TO SAN. DIST. NO. 21 REQ'D. COLLECT ACREAGE REIMBURSEMENT CHARGE - CALL CENTRAL OFFICE
WARWICKSHIRE
 BY-19+61.0
 BY-19+18.5
 BY-19+156.0

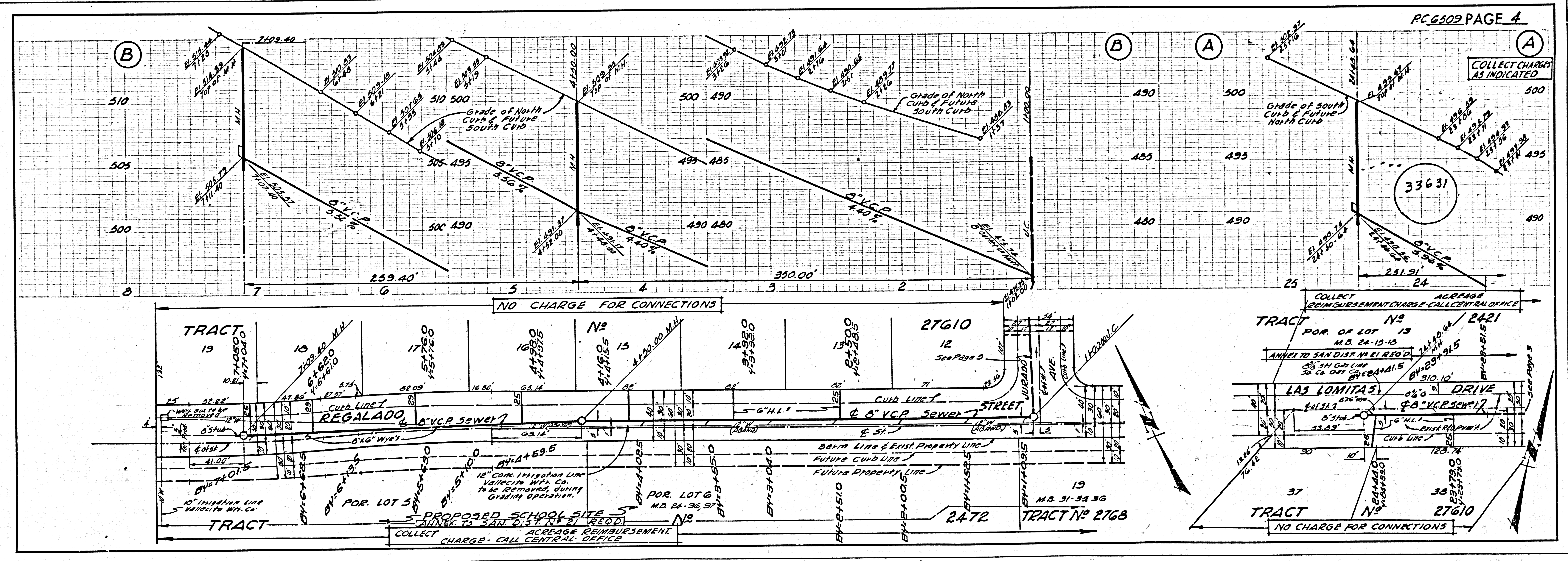
EXISTING 10" V.C.P. SEWER P.C. 6183
 ISSUE PERMITS FROM P.C. 6183

ANNEX TO SAN. DIST. NO. 21 REQ'D. COLLECT ACREAGE REIMBURSEMENT CHARGE - CALL CENTRAL OFFICE

COLLECT CHARGES AS INDICATED

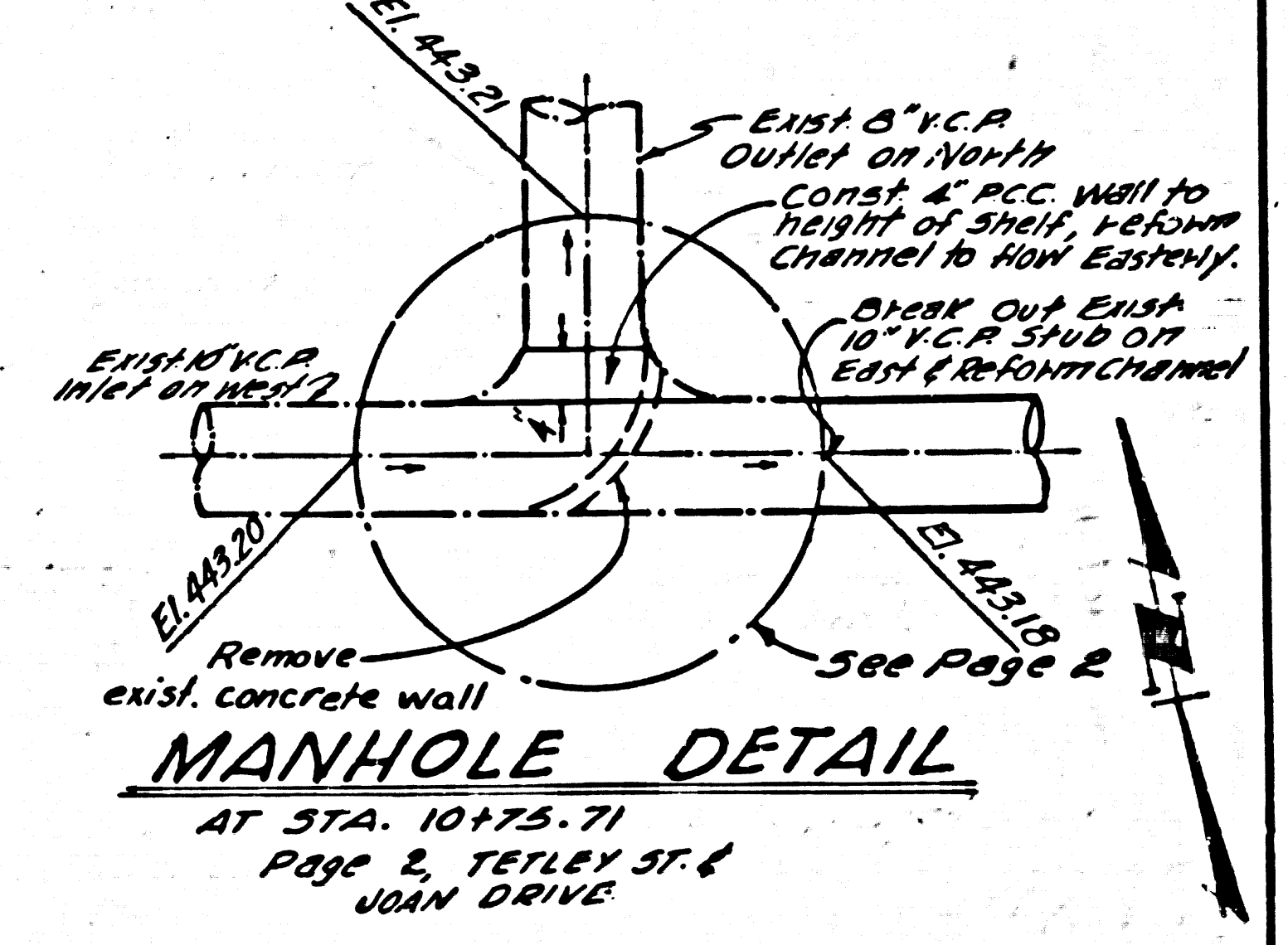
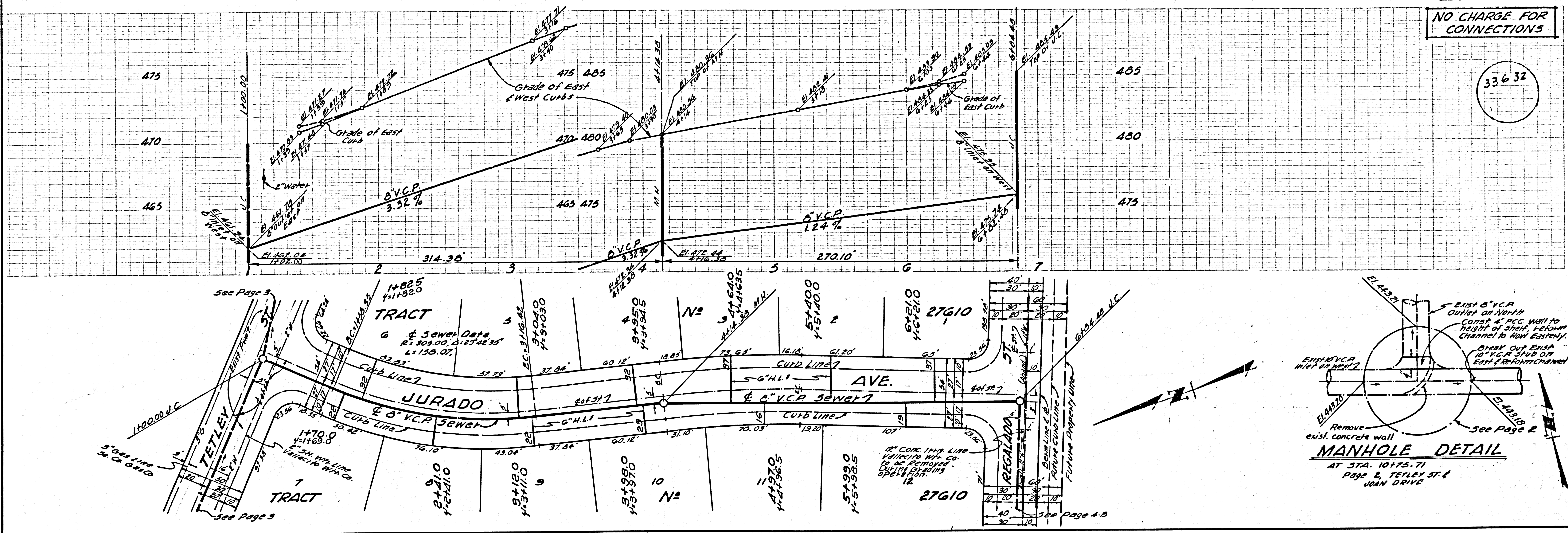


COLLECT CHARGES AS INDICATED



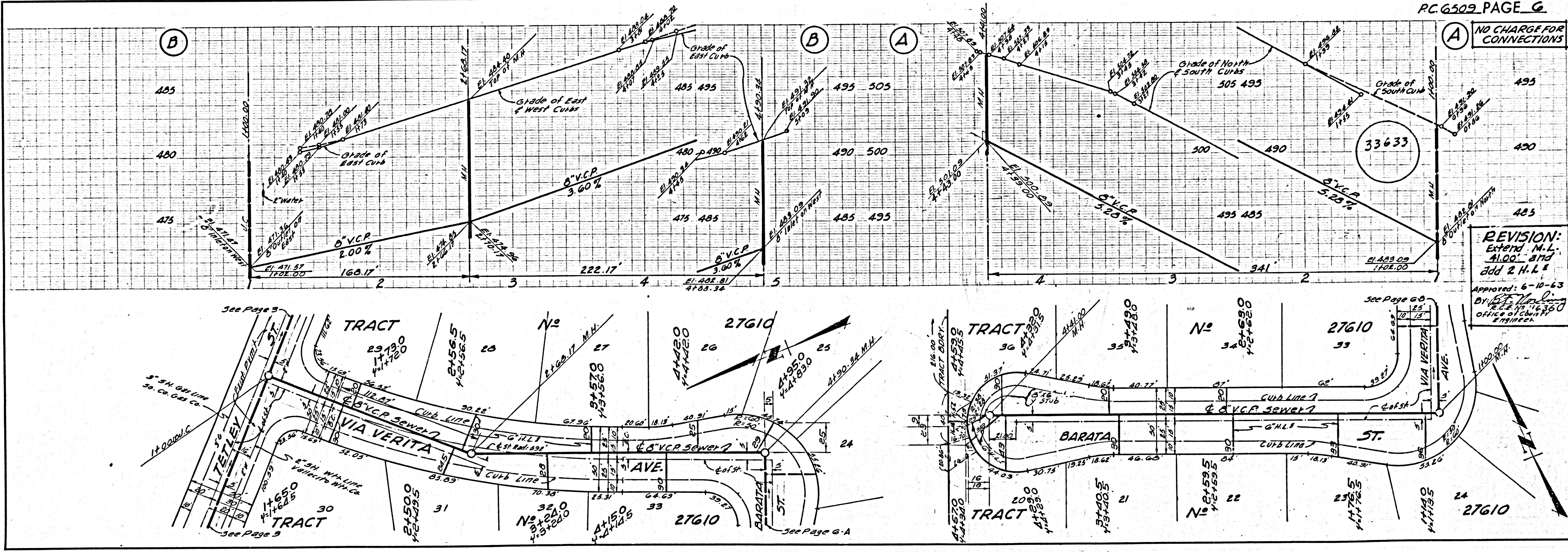
NO CHARGE FOR CONNECTIONS

33632



NO CHARGE FOR CONNECTIONS

33633



REVISION:
 Extend M.L.
 41.00' and
 add 2 H.L.'s

Approved: 6-10-63
 By: [Signature]
 Office of Civil Engineer