

Bench Mark: 54-5329
 R.D.B.M. Tag in W. wing wall Conc. & rk. Curb 21'
 W'ly of E. end of 121' W'ly approx. 54 Mulholland
 Hwy. & 1/2 mi. S'ly int. Mulholland Drive and
 Mulholland Hwy.
 Malibu 1950 Elev 1175.845'

NOTE: IF DURING THE COURSE OF CONSTRUCTION IT IS DETERMINED THAT THERE IS LESS THAN FOUR FEET OF COVER OVER THE TOP OF A MAIN LINE OR HOUSE LATERAL PIPE COVERED BY ANY SURFACE OF THE ROAD, THE PIPE SHALL BE COVERED FOR ONE (1) FOOT, UNLESS OTHERWISE APPROVED BY THE COUNTY ENGINEER.

DOUBLE SCALE
 CALABASAS BLDG. DIST. NO. 9.1

PROFILE ALIGNMENT AND GRADE OF P.C. 6518
 SANITARY SEWERS PAGE 1
 TO BE CONSTRUCTED IN J.N. 0360.03

TRACT N° 27602

PRIVATE CONTRACT NO. 6518

W.S. 60

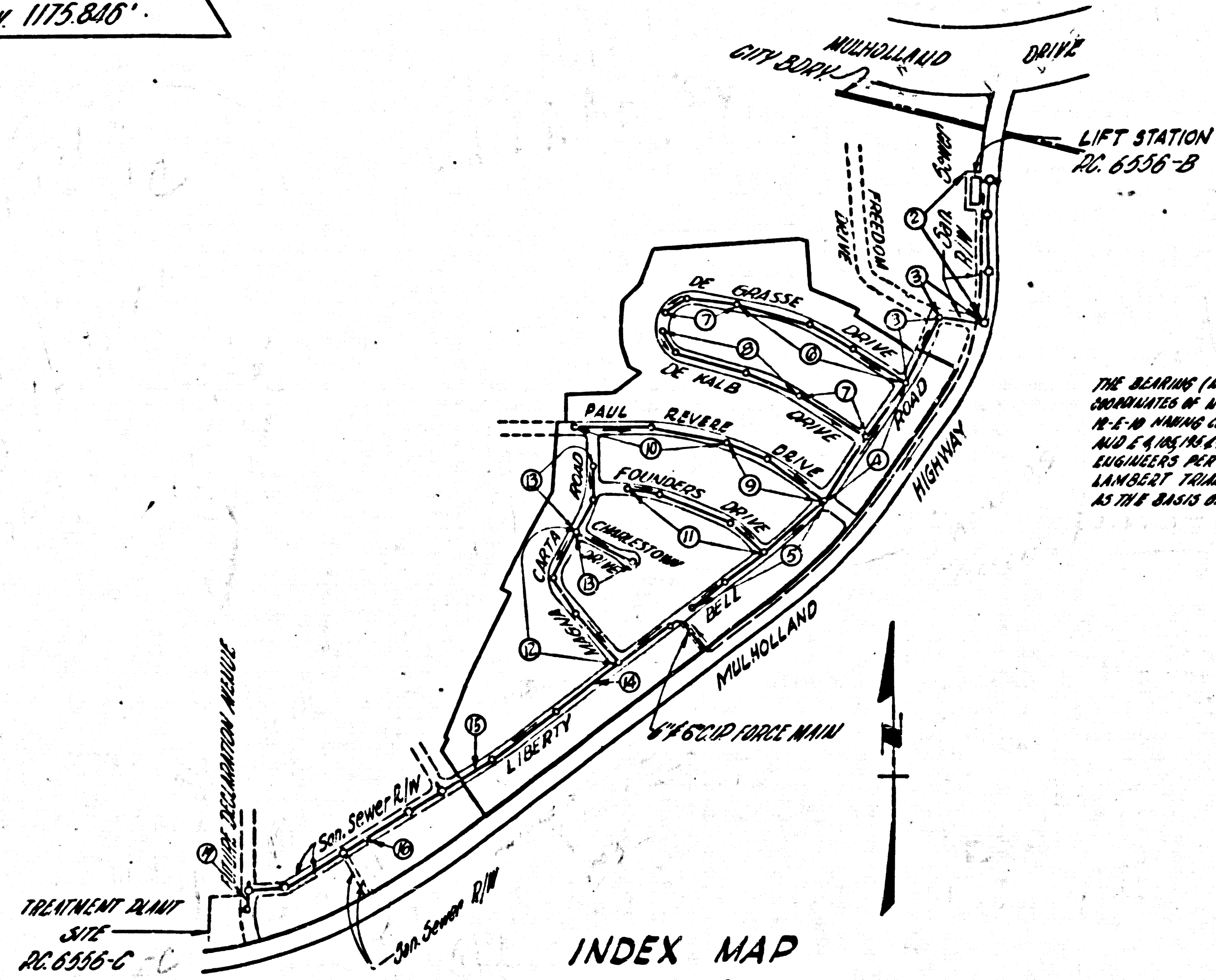
9 SHEETS; 17 PAGES
 SCALE: VERT. 1" = 5' HORIZ. 1" = 25'

36199

PREPARED IN THE OFFICES OF
 ENGINEERING SERVICE CORPORATION

By: E. J. Koenig
 REG. C. E. NO. 3692

FOR LEGEND SEE PLAN NO. S-A-64



INDEX MAP
 TRACT N° 27602
 P.C. 6518
 SCALE: 1" = 600'

NO CHARGE
 FOR CONNECTIONS
 L. Carter 6-20-63

PRIVATE ENGINEER'S
 NOTICE TO CONTRACTOR
 THE EXISTENCE AND LOCATION OF ANY UNDERGROUND UTILITY PIPES OR STRUCTURES SHOWN ON THESE PLANS ARE OBTAINED BY A SEARCH OF THE AVAILABLE RECORDS TO THE BEST OF OUR KNOWLEDGE. THERE ARE NO EXISTING UTILITIES SHOWN ON THIS MAP. THE CONTRACTOR IS REQUIRED TO TAKE PRECAUTIONARY MEASURES TO PROTECT ALL UTILITIES SHOWN AND ANY OTHER UTILITIES NOT OF RECORD OR NOT SHOWN ON THIS DRAWING.

- NOTES
1. PROVIDE STAKES ON THE PROPERTY LINE OR PROPERTY LINES PRODUCED AT RIGHT ANGLES TO THE SEWER LINE AT THE CENTER LINE OF EACH MANHOLE.
 2. NO REPRESENTATIVE OF THE COUNTY ENGINEER WILL SURVEY OR LAYOUT ANY PORTION OF THE WORK.
 3. THE PRIVATE ENGINEER SHALL FURNISH THE COUNTY ENGINEER WITH GRADE SHEETS AND STATIONING FOR ALL HOUSE LATERALS AND Y BRANCHES AND SHALL PROVIDE STAKES FOR THEM AT THEIR PROPER LOCATIONS WITH STATIONING PLAINLY MARKED. ALL HOUSE LATERALS SHALL BE CONSTRUCTED IN A STRAIGHT ALIGNMENT AT RIGHT ANGLES TO THE MAINLINE SEWER EXCEPT AS SHOWN ON THE PLANS. ANY CHANGE IN ALIGNMENT SHALL BE APPROVED BY THE PRIVATE ENGINEER.
 4. NO REVISIONS SHALL BE MADE IN THESE PLANS WITHOUT THE APPROVAL OF THE COUNTY ENGINEER.
 5. USE STANDARD MANHOLE FRAMES AND COVERS, S.A. 117, EXCEPT AS NOTED.
 6. USE EXTRA STRENGTH PIPE, ALL PIPE IS STANDARD DEPTH EXCEPT AS NOTED.
 7. USE MECHANICAL COMPRESSION JOINTS FOR ALL V.C.P. JOINTS PER SPECS., SEC. 56 & 60 & 69.
 8. RESURFACE ALL TRENCH WITHIN PAVED AREA TO MEET L.A. COUNTY ROAD DEPT. OR CALIF. STATE HIGHWAY DEPT. REQUIREMENTS IN ACCORDANCE WITH SPECIFICATIONS.
 9. IF A TRENCH IS TO BE OPENED AT THE CURB, THE SEWER SHALL BE ENCASED IN CONCRETE OR CURB 18" HIGH, TWO FEET ON EACH SIDE OF THE PIPE AT ALL INTERSECTIONS.
 10. HOUSE LATERALS TO BE CONSTRUCTED WITH INVERTS AT PROPERTY LINE AND FEET BELOW CURB GRADE EXCEPT AS NOTED.
 11. ALL STRUCTURES SHALL BE BRICK SEWER STRUCTURES, S.A. 104, PRECAST CONCRETE MANHOLES PER S.A. 118 OR S.A. 173 MAY BE USED AS AN ALTERNATE IN LOCATION APPROVED BY THE COUNTY ENGINEER.
 12. MANHOLE TOPS IN UNIMPROVED RIGHTS-OF-WAY TO BE 4" ABOVE FINISHED GRADE.
 13. THE PRIVATE ENGINEER SHALL FURNISH THE HOUSE LATERAL DEPTH AT THE PROPERTY LINE BELOW THE TOP OF CURB ELEVATION FOR EACH HOUSE LATERAL ON THE GRADE SHEET.
 14. THE CONTRACTOR SHALL NOTIFY THE CONSTRUCTION DIVISION, MADISON 9-6747, EXT. 81551 AT LEAST TWENTY FOUR HOURS BEFORE STARTING WORK UNDER THIS CONTRACT.
 15. SPECIFICATIONS DATED MAY 25, 1962 APPLY IN THE CONSTRUCTION OF THIS PROJECT.
 16. NO CONSTRUCTION WILL BE PERMITTED IN FILLED AREAS UNLESS ACCEPTABLE CERTIFICATION IS SUBMITTED TO THE CONSTRUCTION DIVISION OF THE COUNTY ENGINEER'S DEPARTMENT THAT SETTLEMENT IS GREATER THAN 80%.
 17. (a) IF COMPACTION IS LESS THAN 90% THE SEWER MUST BE CRADLED AS SHOWN ON THE PLAN PER S.A. 118, AND SPECIAL MANHOLE BASES CONSTRUCTED AS SHOWN ON THE PLANS PER SPECS., SEC. 58, 59 & 60.
 - (b) IF COMPACTION IS 90% OR GREATER CRADLING & SPECIAL MANHOLE BASES ARE NOT REQUIRED.
 18. ALL STATE AND LOCAL TRENCH SAFETY ORDERS WILL BE RIGIDLY ENFORCED.

ENGINEERING SERVICE CORPORATION
 1127 W. WASHINGTON BLVD.
 LOS ANGELES 15, CALIF. RI. 9-7281

REVISIONS		TRACED BY
		ES-16
		DES'G'D BY L.L.
		CK'D BY G.M.P.
		SUBMITTED

W. O. NO.	DWG. NO.	DATE	SCALE	L.B.	F.B.
831-A		2-20-1962	AS SHOWN		

NOTE: GRADES TO WHICH THIS IMPROVEMENT IS TO BE CONSTRUCTED ARE SHOWN ON PLANS AND PROFILES. GRADE POINTS FOR TOP OF CURB, CENTER LINE OF STREETS, OR CENTER LINE OF ALLEYS ARE SHOWN BY CIRCLES ON PROFILES. AT ALL POINTS BETWEEN DESIGNATED POINTS THE GRADE SHALL BE ESTABLISHED SO AS TO CONFORM TO A STRAIGHT LINE DRAWN BETWEEN SAID DESIGNATED POINTS.

ELEVATIONS ARE IN FEET ABOVE U.S.C. & G.S. SEA LEVEL DATUM OF 1929.

THIS DRAWING AND THE DATA HEREON ARE HEREBY MADE A PART OF THE SPECIFICATIONS. WORK SHALL BE CONSTRUCTED ACCORDING TO SPECIFICATIONS ON FILE IN THE OFFICE OF THE COUNTY ENGINEER AND SHALL BE PROSECUTED ONLY IN THE PRESENCE OF THE COUNTY ENGINEER.

BEFORE WORK CAN BE STARTED, THE CONTRACTOR MUST OBTAIN A PERMIT TO EXCAVATE IN COUNTY STREETS FROM THE COUNTY ROAD DEPT., DISTRICT OFFICE NO. 3 AND PAY A FEE TO THE COUNTY ENGINEER, ROOM 507 COUNTY ENGINEER BUILDING AND 1/2" X 1/2" STAMP SUFFICIENT TO COVER THE COST OF CONSTRUCTION INSPECTION AND RECORD PLANS.

APPROVAL OF THIS PLAN BY THE COUNTY OF LOS ANGELES DOES NOT CONSTITUTE A REPRESENTATION AS TO THE ACCURACY OF THE LOCATION OR OF THE EXISTENCE OR NON-EXISTENCE OF ANY UNDERGROUND UTILITY PIPE, OR STRUCTURE WITHIN THE LIMITS OF THIS PROJECT. THE NOTE APPLIES TO ALL PAGES.

IF WORK IS TO BE DONE IN A STATE HIGHWAY, A PERMIT MUST BE OBTAINED FROM THE STATE OF CALIFORNIA, DIVISION OF HIGHWAYS, 128 SOUTH SPRING STREET.

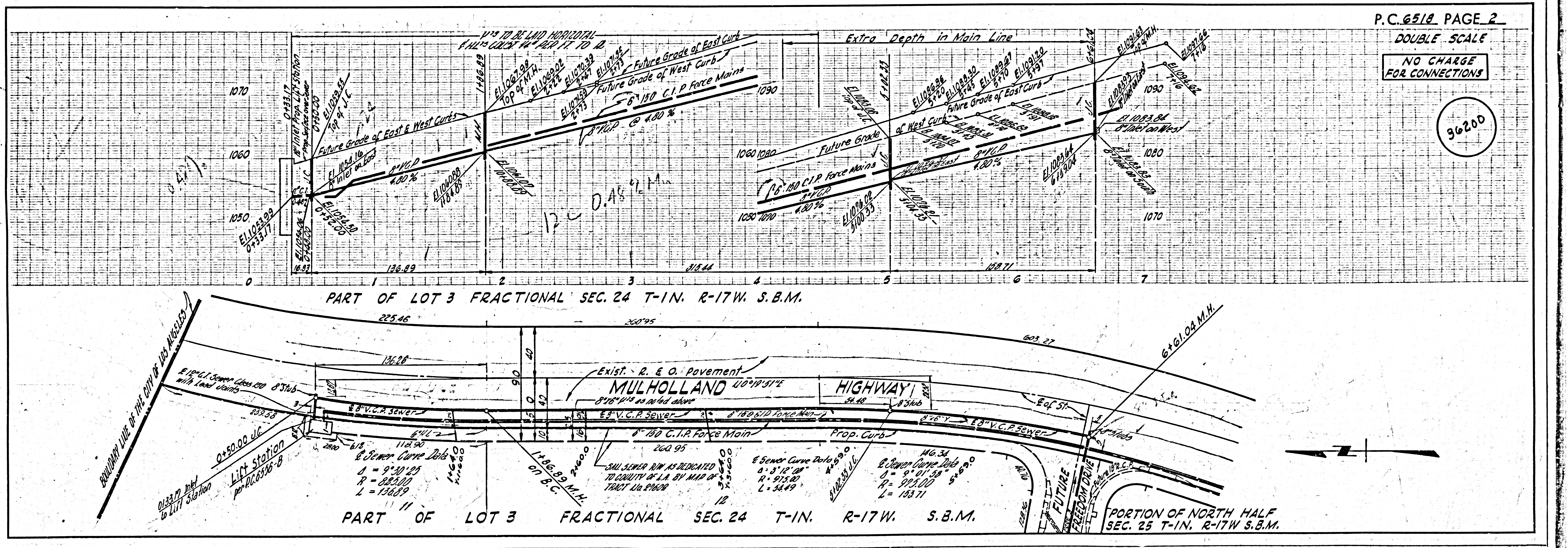
COUNTY OF LOS ANGELES, CALIFORNIA

APPROVED, JOHN A. LAMBE, COUNTY ENGINEER

BY: Ralph Schab
 ASST. SANITATION ENGINEER

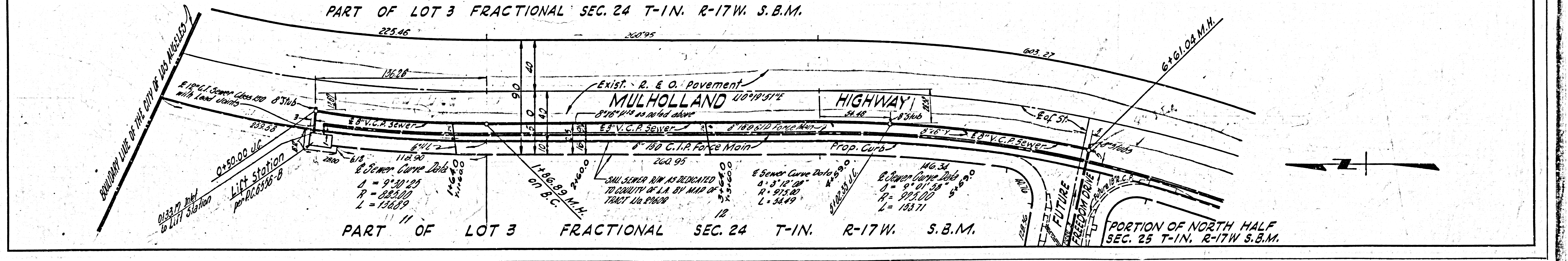
CHECKED BY: SK Deke
 OFFICE OF COUNTY ENGINEER, REG. C. E. NO. 7406

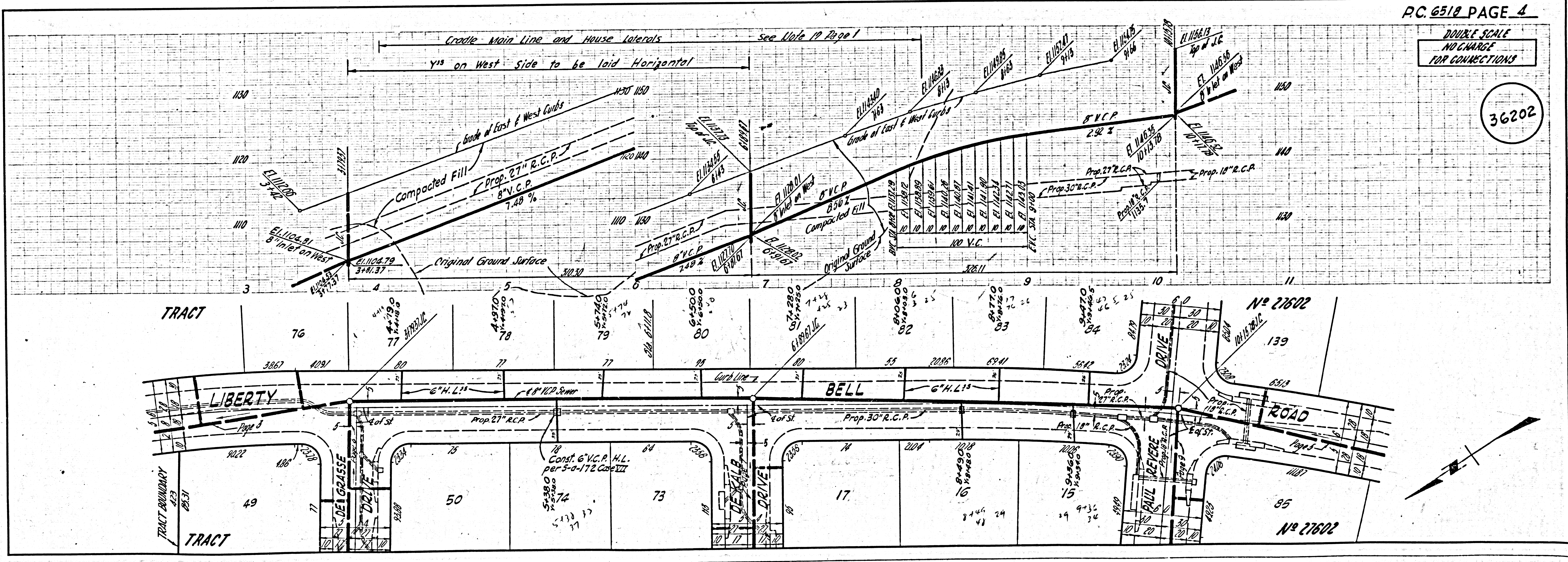
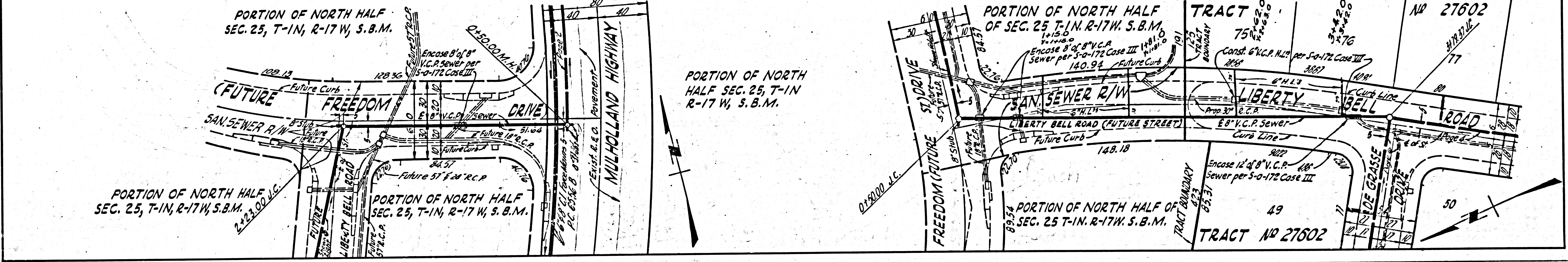
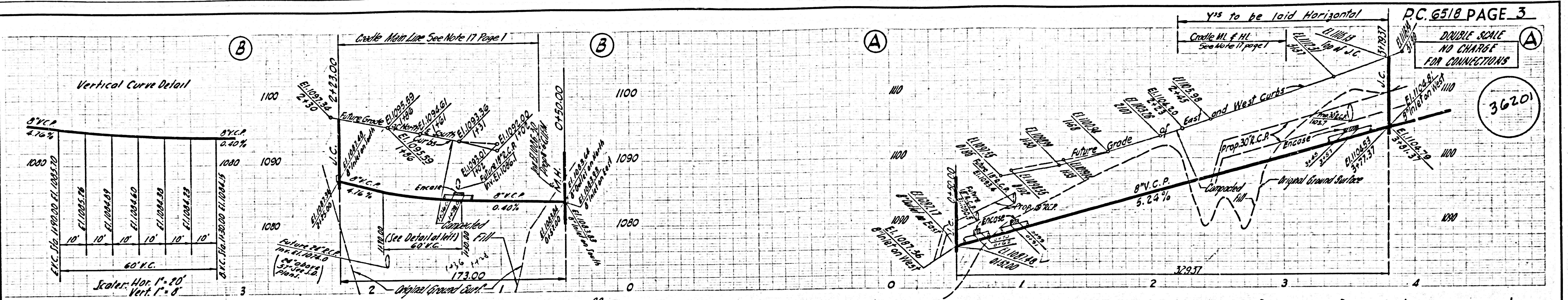
SUBMITTED BY: Ralph Schab
 for the PALMS VERDES-CENTINELA VALLEY REGIONAL ENGINEER



P.C. 6518 PAGE 2
 DOUBLE SCALE
 NO CHARGE
 FOR CONNECTIONS

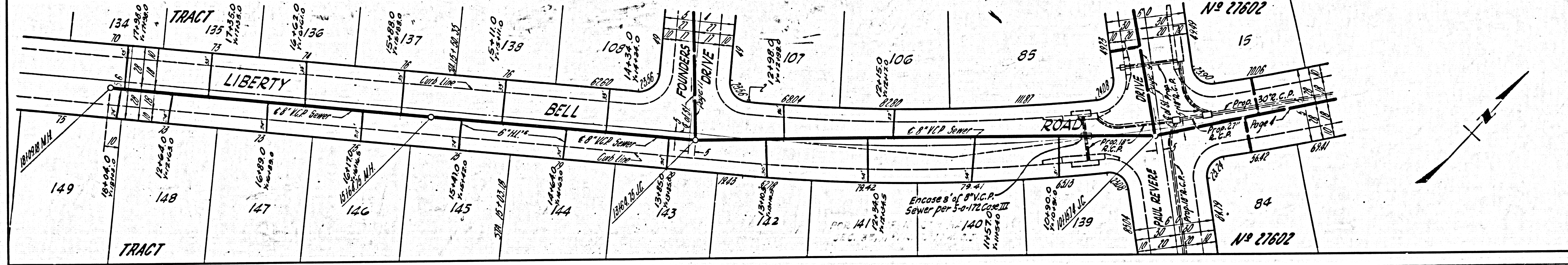
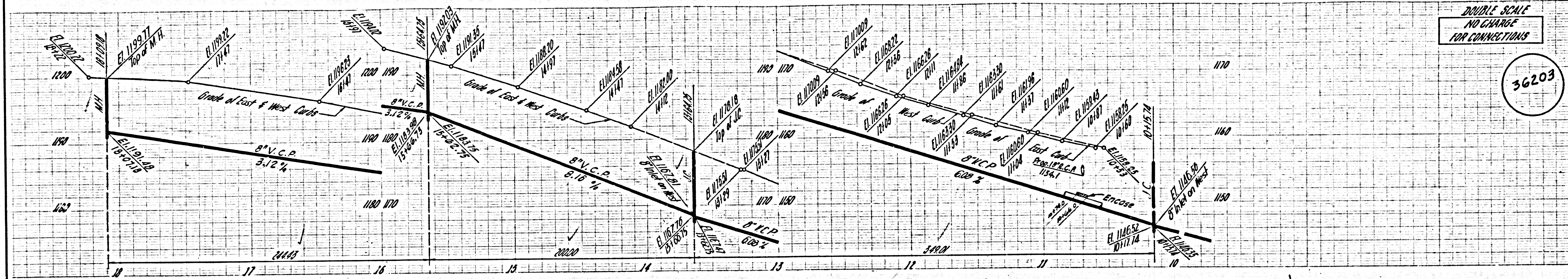
36200





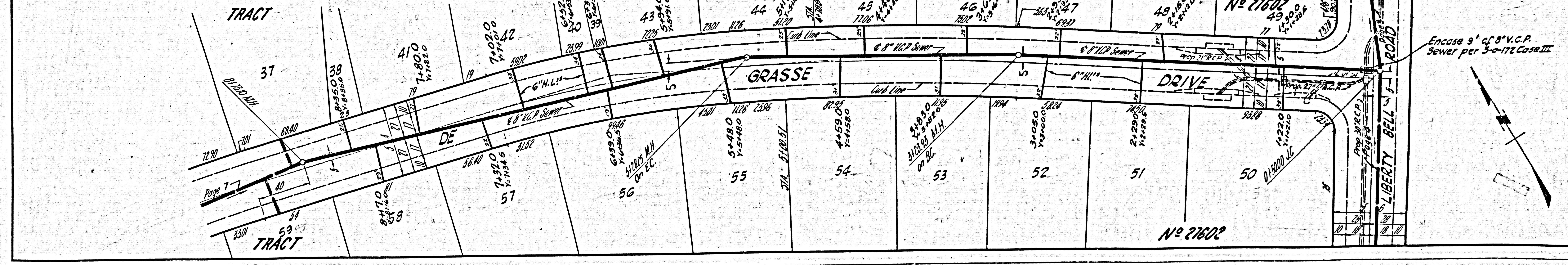
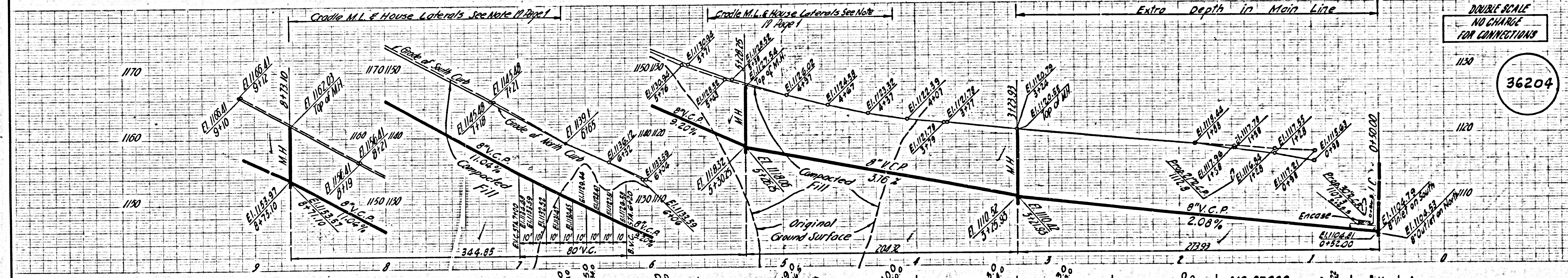
DOUBLE SCALE
NO CHARGE
FOR CONNECTIONS

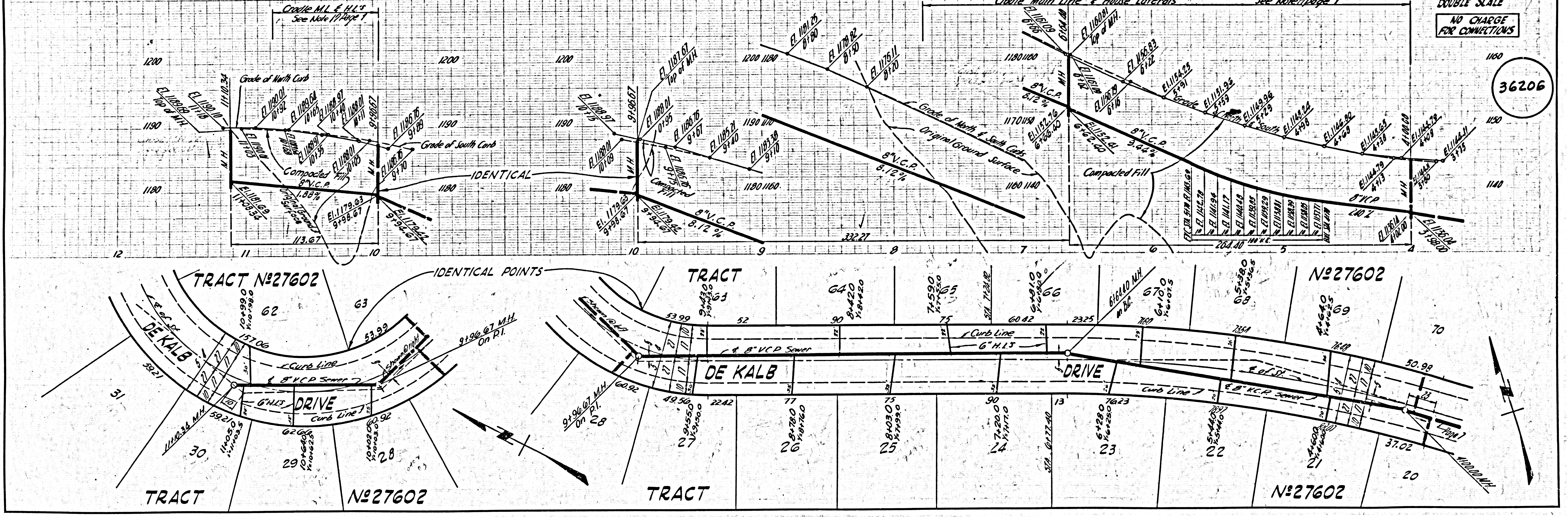
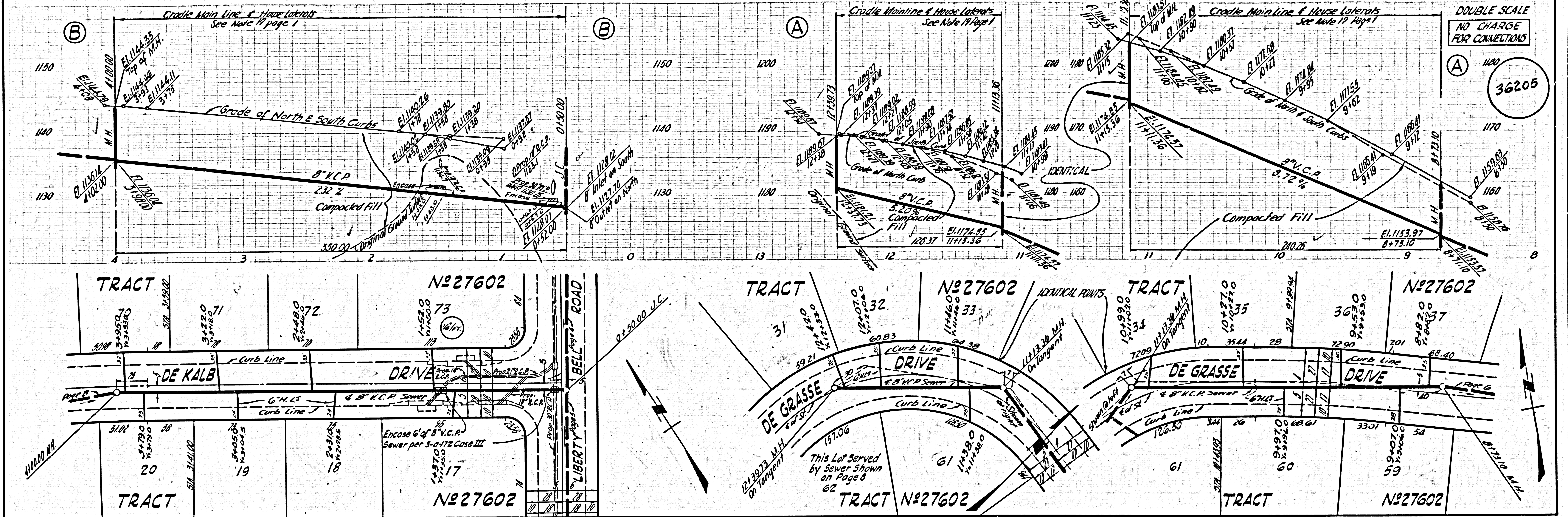
36203



DOUBLE SCALE
NO CHARGE
FOR CONNECTIONS

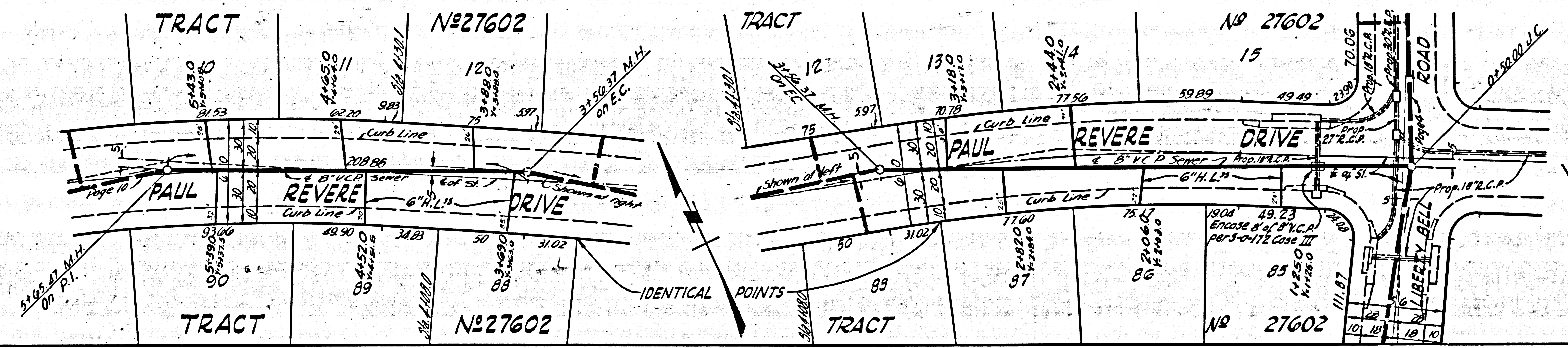
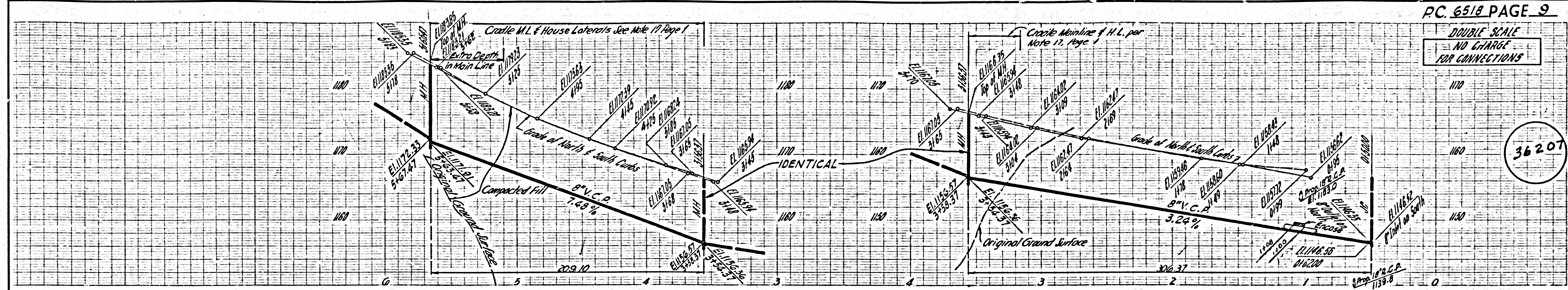
36204





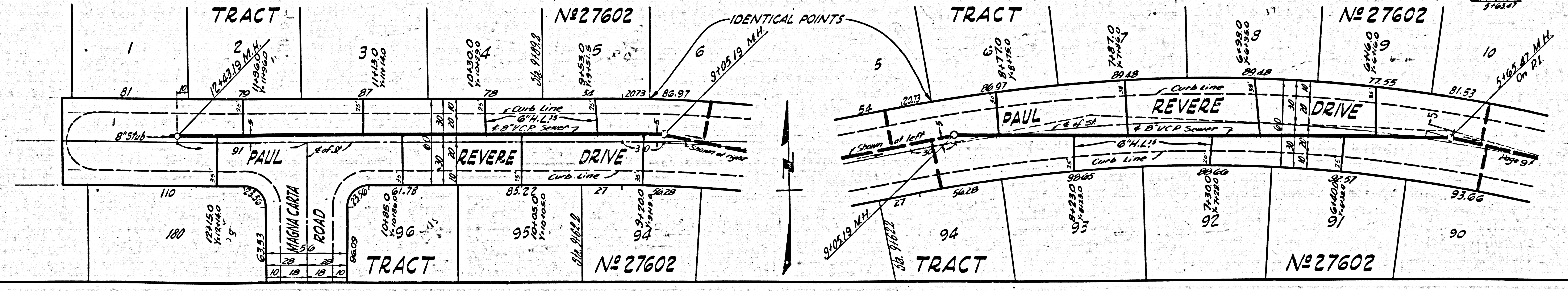
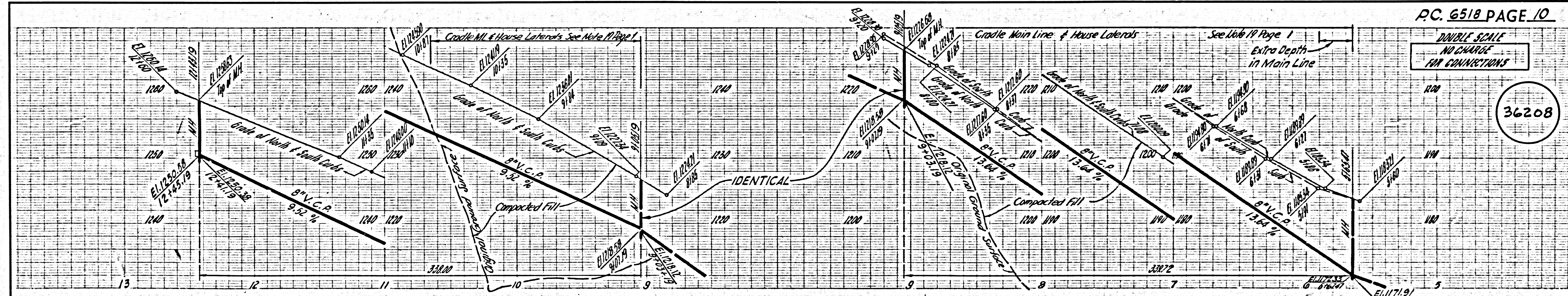
DOUBLE SCALE
NO CHANGE
FOR CONNECTIONS

36207



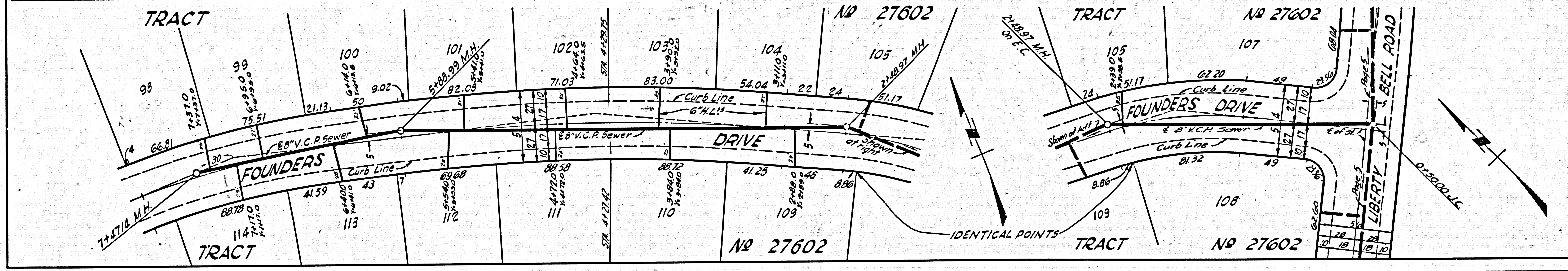
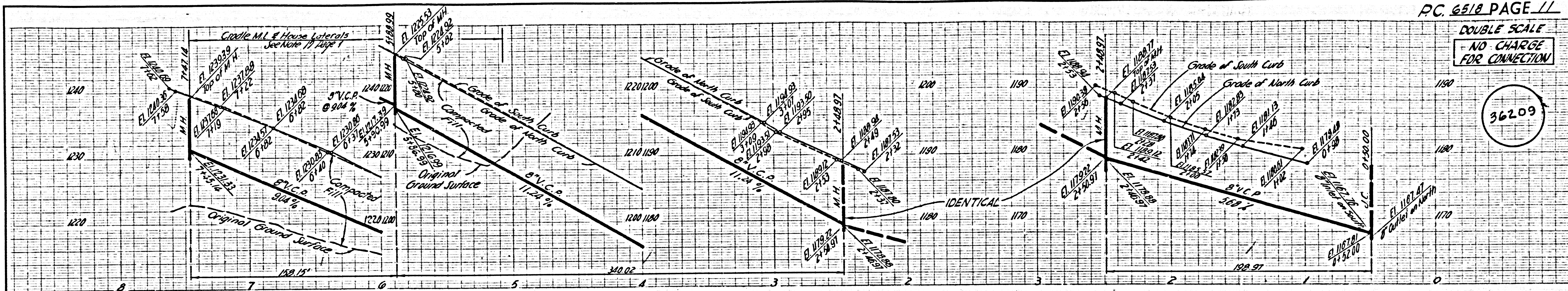
DOUBLE SCALE
NO CHANGE
FOR CONNECTIONS

36208



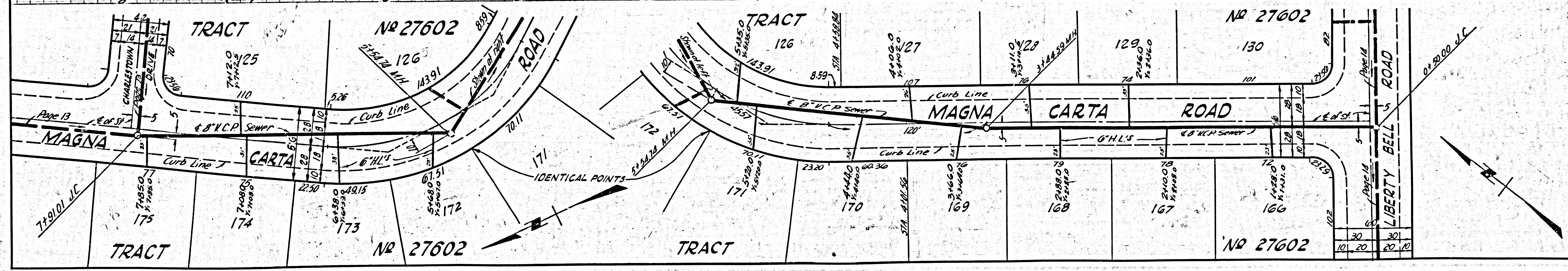
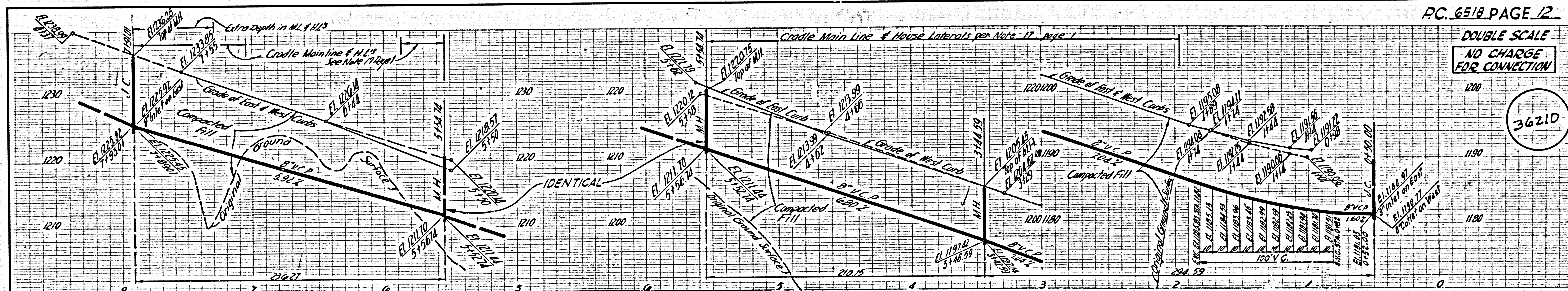
DOUBLE SCALE
NO CHARGE
FOR CONNECTION

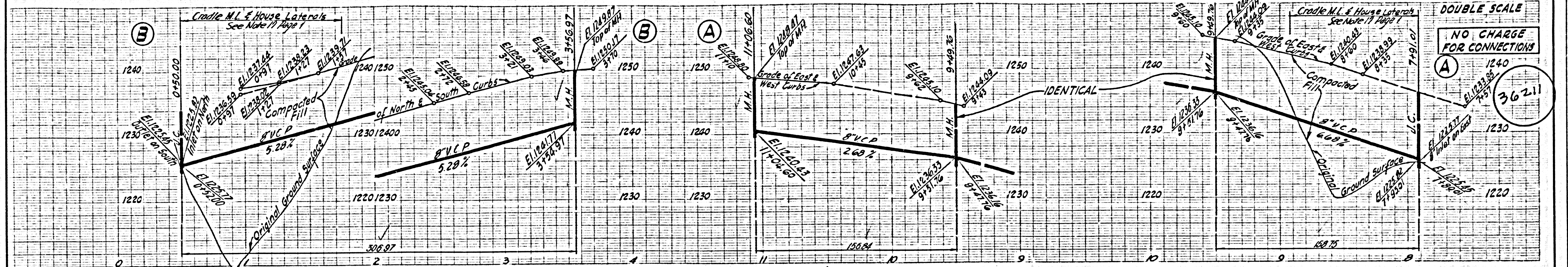
36209



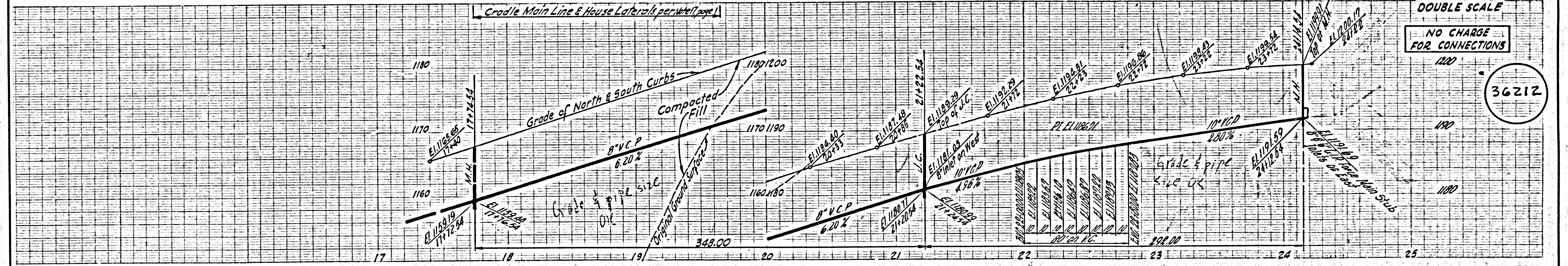
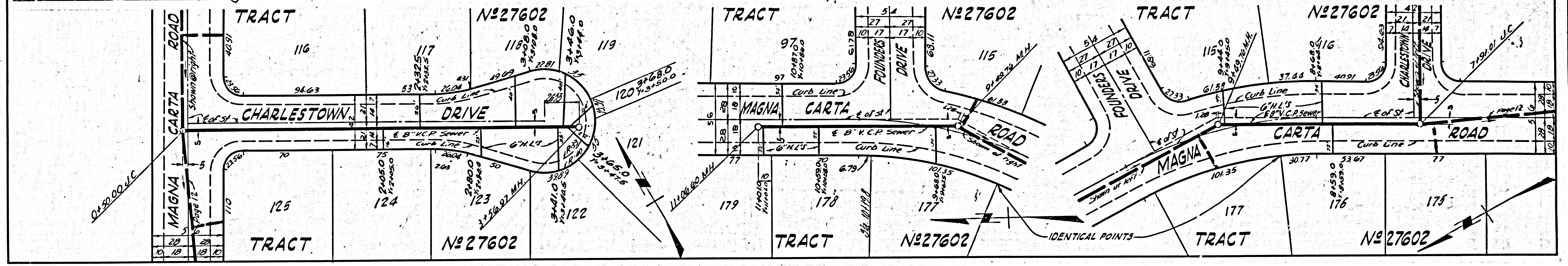
DOUBLE SCALE
NO CHARGE
FOR CONNECTION

36210

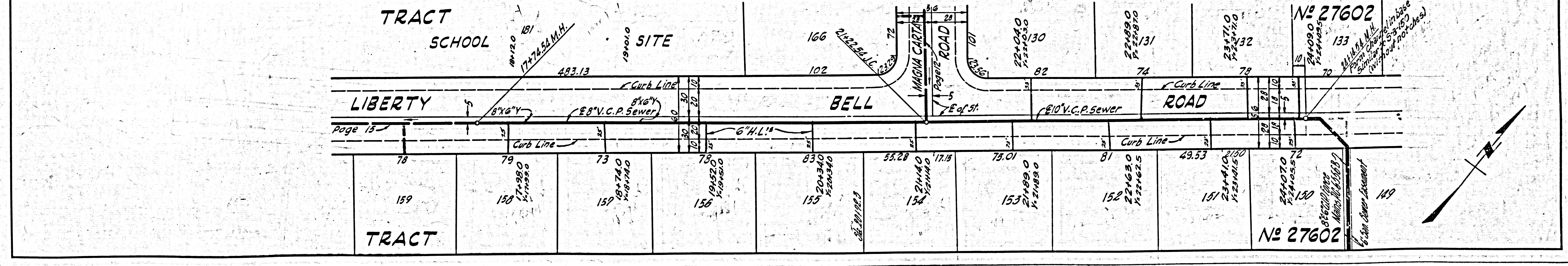




DOUBLE SCALE
NO CHARGE FOR CONNECTIONS
36211

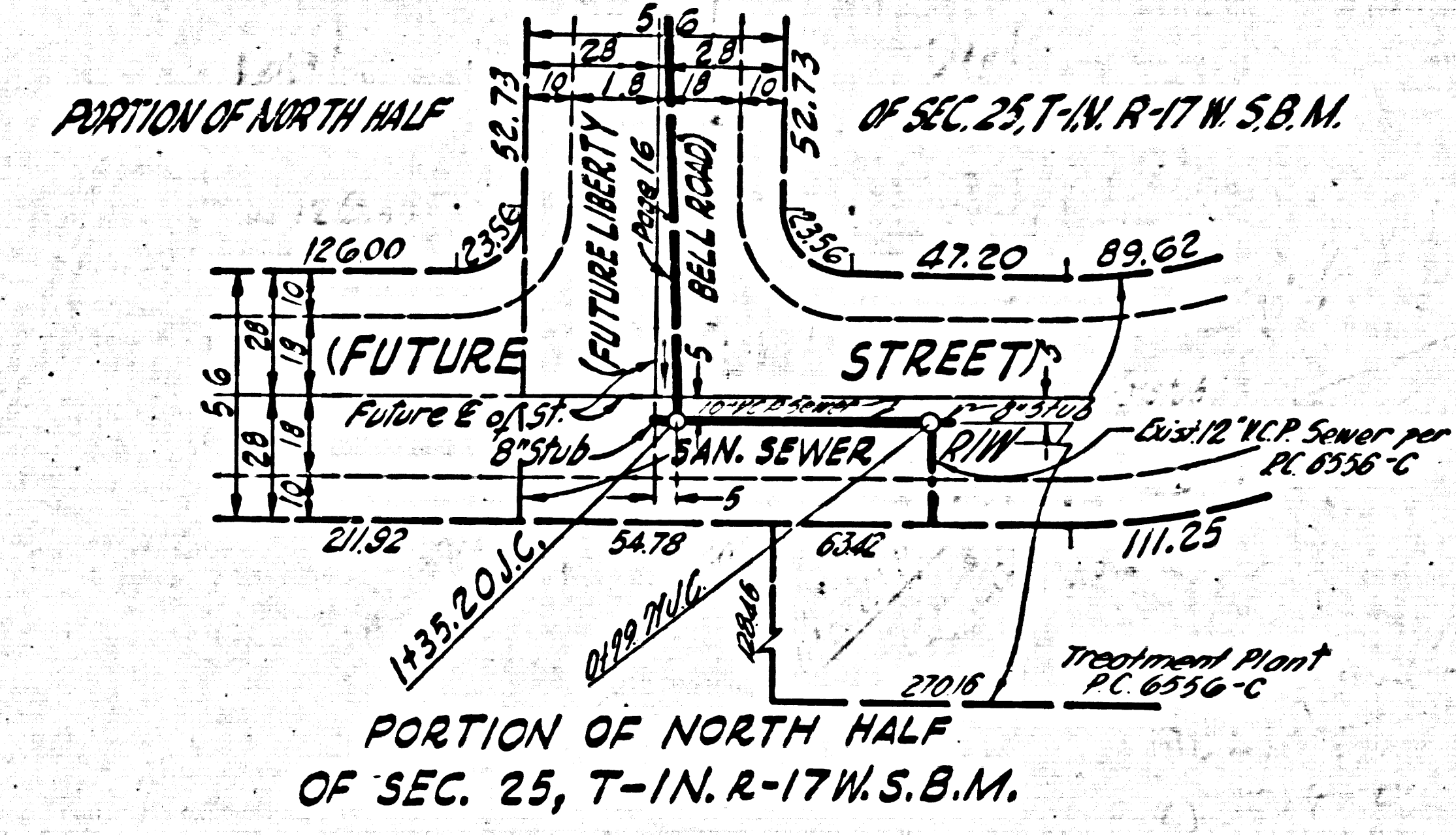
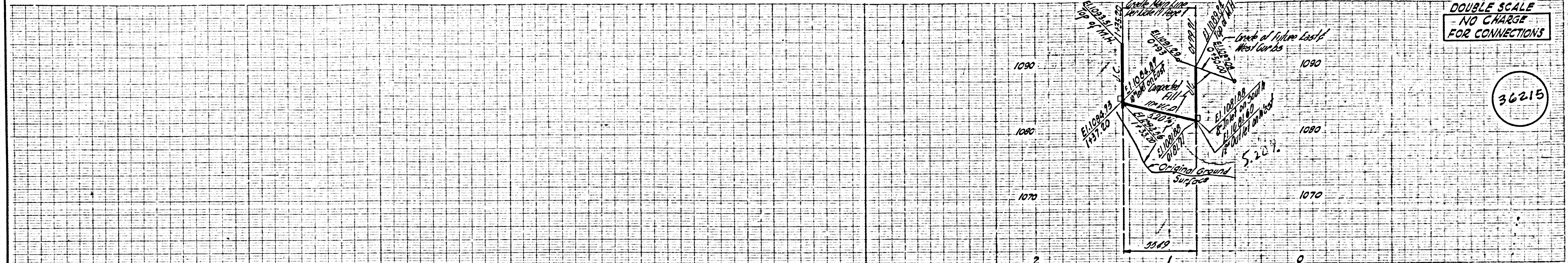


DOUBLE SCALE
NO CHARGE FOR CONNECTIONS
36212

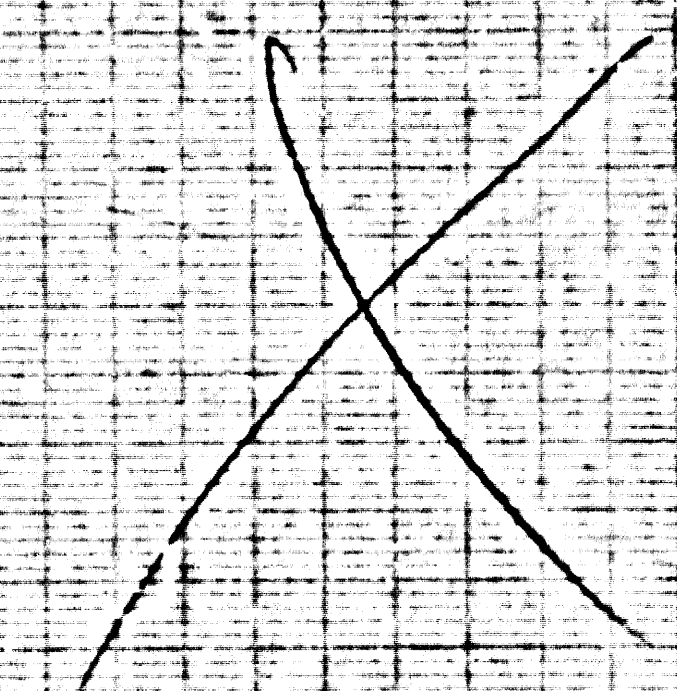


DOUBLE SCALE
NO CHARGE
FOR CONNECTIONS

36215



PAGE



35215