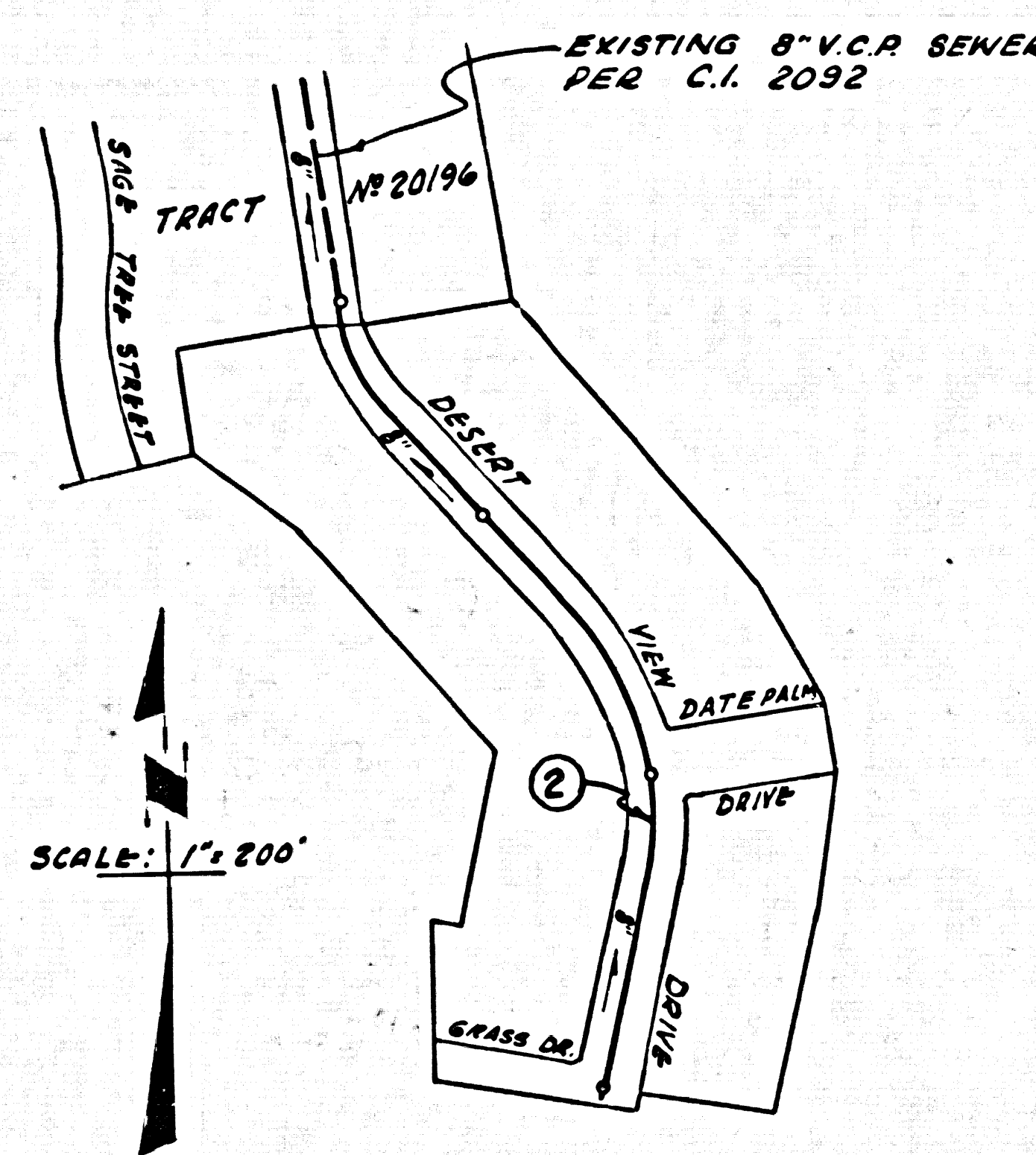


BENCH MARK
 S.L. 1365 - Elev. 2744.644 1955 Adj.
 2" I.P. and Br. Cap in conc. 1169'
 along E. prod. Elizabeth Lake
 Pine Canyon Road 10.4 mi.
 east of 25th St West marked
 "B.M. #5 Palmdale Area"



INDEX MAP
 TRACT NO. 27398 P.C. 6523

DOUBLE SCALE
 PALMDALE BLDG. DIST. NO. 8.1

PROFILE ALIGNMENT AND GRADE OF P.C. 6523
 SANITARY SEWERS PAGE 1

TO BE CONSTRUCTED IN
 TRACT NO. 27398

PRIVATE CONTRACT NO. 6523

W.S. 64

1 SHEETS; 2 PAGES

SCALE: VERT. 1" = 4' HORIZ. 1" = 20'

MARCH, 1963

PREPARED IN THE OFFICES OF

PARAMOUNT ENGINEERING CO.

2921 BEVERLY BOULEVARD

LOS ANGELES 37, CALIFORNIA

REG. C. E. NO. 12255

FOR LEGEND SEE PLAN NO. S-A-64

- NOTES:
1. PROVIDE STAKES ON THE PROPERTY LINE OR PROPERTY LINES PRODUCED AT RIGHT ANGLES TO THE SEWER LINE AT THE CENTER LINE OF EACH MANHOLE.
 2. NO REPRESENTATIVE OF THE COUNTY ENGINEER WILL SURVEY OR LAY OUT ANY PORTION OF THE WORK.
 3. THE PRIVATE ENGINEER SHALL FURNISH TO THE COUNTY ENGINEER WITH GRADE SHEETS AND STATIONING FOR ALL HOUSE LATERALS AND Y BRANCHES AND SHALL PROVIDE STAKES FOR THEM AT THEIR PROPER LOCATIONS WITH STATIONING PLAINLY MARKED. ANY CHANGE IN ALIGNMENT SHALL BE REQUESTED IN WRITING BY THE PRIVATE ENGINEER. ALL PROPOSED LATERALS SHALL BE CONSTRUCTED IN A STRAIGHT ALIGNMENT AT RIGHT ANGLES FROM THE MAIN LINE UNLESS OTHERWISE SPECIFIED. HOUSE LATERALS SHALL BE CONSTRUCTED TO THE CENTER OF THE MAIN LINE.
 4. THE PRIVATE ENGINEER SHALL FURNISH THE HOUSE LATERAL DEPTH AT THE PROPERTY LINE BELOW THE TOP OF CURB ELEVATION FOR EACH HOUSE LATERAL ON THE GRADE SHEET.
 5. NO REVISIONS SHALL BE MADE IN THESE PLANS WITHOUT THE APPROVAL OF THE COUNTY ENGINEER.
 6. USE STANDARD MANHOLE FRAMES AND COVERS, S-117, EXCEPT AS NOTED.
 7. USE EXTRA STRENGTH PIPE. ALL PIPE IS STANDARD DEPTH EXCEPT AS NOTED.
 8. USE MECHANICAL COMPRESSION JOINTS FOR ALL R.C.P. JOINTS PER SPECS, SEC. 26 & 48.
 9. RESURFACE ALL TRACED WITHIN PAVED AREA TO MEET L.A. COUNTY ROAD DEPT. OR CALIF. STATE HIGHWAY REQUIREMENTS IN ACCORDANCE WITH PERMITS.
 10. ALL MANHOLE FRAMES WITHIN THREE FEET OF THE SEWER, THE SEWER SHALL BE ENCASED PER S-117, CASE 2 PER PERMITS. THE ENCASEMENT SHALL BE CONSTRUCTED TO THE POINT OF INTERFERENCE.
 11. HOUSE LATERALS TO BE CONSTRUCTED WITH INVERTS AT PROPERTY LINE 6 FEET BELOW CURB GRADE EXCEPT AS NOTED.
 12. MANHOLES SHALL BE BRICK SEWER STRUCTURES PER S-117, PERMITS. PRECAST CONCRETE MANHOLES PER S-117 OR S-118 PER PERMITS AS AN ALTERNATE ALLOCATION APPROVED BY THE COUNTY ENGINEER.
 13. FOR ALLOWABLE LEAKAGE TEST USE FORMULA NO. 2 PER SPECS, SEC. 54.
 14. MANHOLE TOPS IN UNIMPROVED RIGHTS-OF-WAY TO BE SIX INCHES ABOVE FINISHED GRADE.
 15. THE CONTRACTOR SHALL NOTIFY THE CONSTRUCTION DIVISION BY TELEPHONE, MADISON 5-4747, AT LEAST TWENTY-FOUR HOURS BEFORE STARTING ANY WORK UNDER THIS CONTRACT.
 16. IF DURING THE COURSE OF CONSTRUCTION IT IS DETERMINED THAT THERE IS LESS THAN A FEET OF COVER OVER THE TOP OF A MAIN LINE OR HOUSE LATERAL, R.C.P. SEWER WHICH IS NOT INDICATED ON THE PLANS, THE PIPE SHALL BE ENCASED PER S-117, CASE 2, UNLESS OTHERWISE APPROVED BY THE COUNTY ENGINEER.
 17. WHERE EVER GROUND WATER IS ENCOUNTERED DURING THE CONSTRUCTION OF THE SEWERS, THE R.C.P. JOINTS SHALL BE OF JOINT COMPOUND PER SPECS, SEC. 26 & 48, 18 MECHANICAL COMPRESSION JOINTS PER SPECS, SEC. 26.

ALL STATE AND LOCAL TRENCH SAFETY ORDERS WILL BE RIGIDLY ENFORCED.

NO CONNECTIONS FOR THE DISPOSAL OF INDUSTRIAL WASTES SHALL BE MADE TO SEWERS SHOWN ON THESE DRAWINGS WITHOUT WRITTEN PERMISSION FROM THE CHIEF ENGINEER AND GENERAL MANAGER OF THE COUNTY SANITATION DISTRICTS.

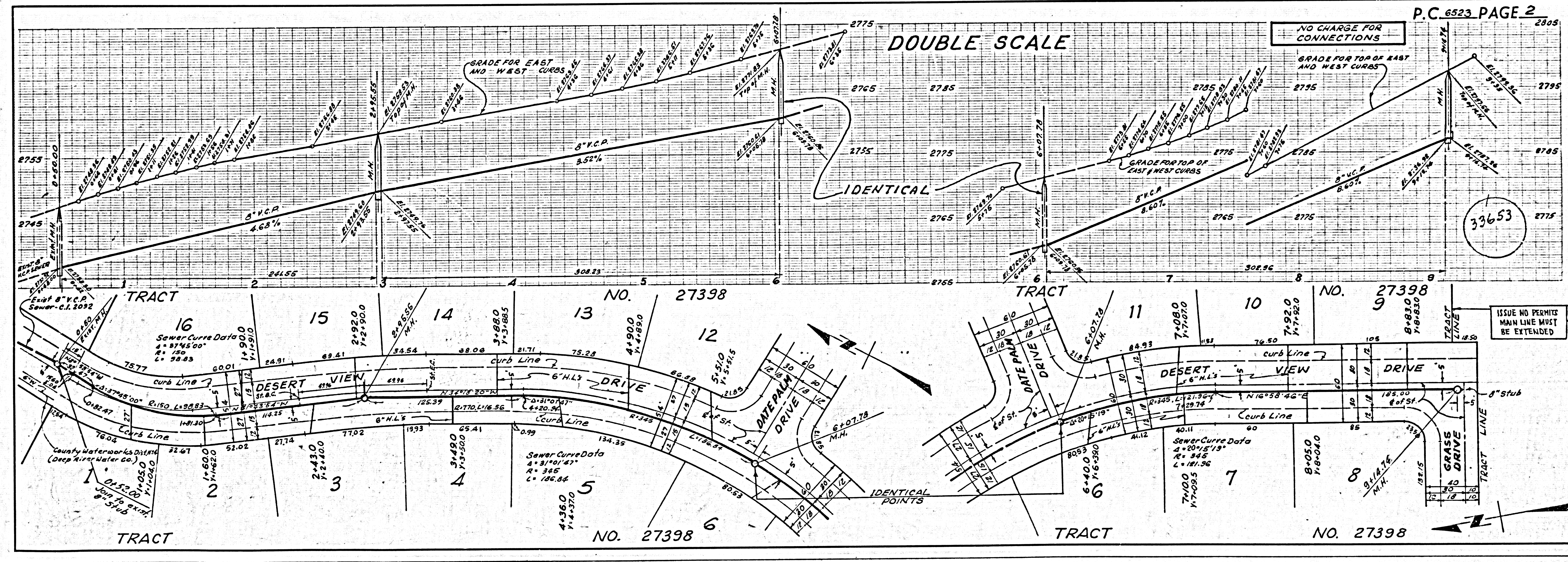
NO CHARGE FOR CONNECTIONS
 J.K. Wade 5-1-63

NOTE:
 GRADES TO WHICH THIS IMPROVEMENT IS TO BE CONSTRUCTED ARE SHOWN ON PLANS AND PROFILES. GRADE POINTS FOR TOP OF CURBS, CENTER LINE OF STREETS, OR CENTER LINE OF ALLEYS ARE SHOWN BY CIRCLES ON PROFILES. AT ALL POINTS BETWEEN DESIGNATED POINTS THE GRADE SHALL BE ESTABLISHED SO AS TO CONFORM TO A STRAIGHT LINE DRAWN BETWEEN SAID DESIGNATED POINTS.
 ELEVATIONS ARE IN FEET ABOVE U.S.C. & G.S. SEA LEVEL DATUM OF 1929.
 THIS DRAWING AND THE DATA HEREON ARE HEREBY MADE A PART OF THE SPECIFICATIONS.
 WORK SHALL BE CONSTRUCTED ACCORDING TO STANDARD SPECIFICATIONS DATED MAY 18, 1962 ON FILE IN THE OFFICE OF THE COUNTY ENGINEER AND SHALL BE PROSECUTED ONLY IN THE PRESENCE OF THE COUNTY ENGINEER.
 BEFORE WORK CAN BE STARTED, THE CONTRACTOR MUST OBTAIN A PERMIT TO EXCAVATE IN COUNTY STREETS FROM THE L.A. COUNTY ROAD DEPT., DISTRICT OFFICE NO. 5 AND PAY A FEE TO THE COUNTY ENGINEER, ROOM 330, COUNTY ENGINEERING BLDG., 120 SOUTH SPRING STREET, LOS ANGELES, CALIF. IN ACCORDANCE WITH THE SPECIFICATIONS.
 APPROVAL OF THIS PLAN BY THE COUNTY OF LOS ANGELES DOES NOT CONSTITUTE A REPRESENTATION AS TO THE ACCURACY OF THE LOCATION OF OR THE EXISTENCE OR NON-EXISTENCE OF ANY UNDERGROUND UTILITY PIPE, OR STRUCTURE WITHIN THE LIMITS OF THIS PROJECT. THIS NOTE APPLIES TO ALL PAGES.
 NO WORK IS TO BE DONE IN A STATE HIGHWAY, A PERMIT MUST BE OBTAINED FROM THE STATE OF CALIFORNIA, DIVISION OF HIGHWAYS, 120 SOUTH SPRING STREET.

COUNTY OF LOS ANGELES, CALIFORNIA

APPROVED: JOHN A. LAMBIE, COUNTY ENGINEER
 APPROVED: J.D. PARKINSON, CHIEF ENGINEER
 CO. SAN. DIST. NO. 20
 APPROVED BY: [Signature] ASSISTANT SANITATION ENGINEER
 APPROVED BY: [Signature] OFFICE ENGINEER
 SUBMITTED BY: [Signature] REGIONAL ENGINEER
 CHECKED BY: [Signature] REGISTERED CIVIL ENGINEERS No. 3444

J.N. 0360.04



DOUBLE SCALE

NO CHARGE FOR CONNECTIONS

P.C. 6523 PAGE 2

33653

ISSUE NO PERMITS MAIN LINE MUST BE EXTENDED