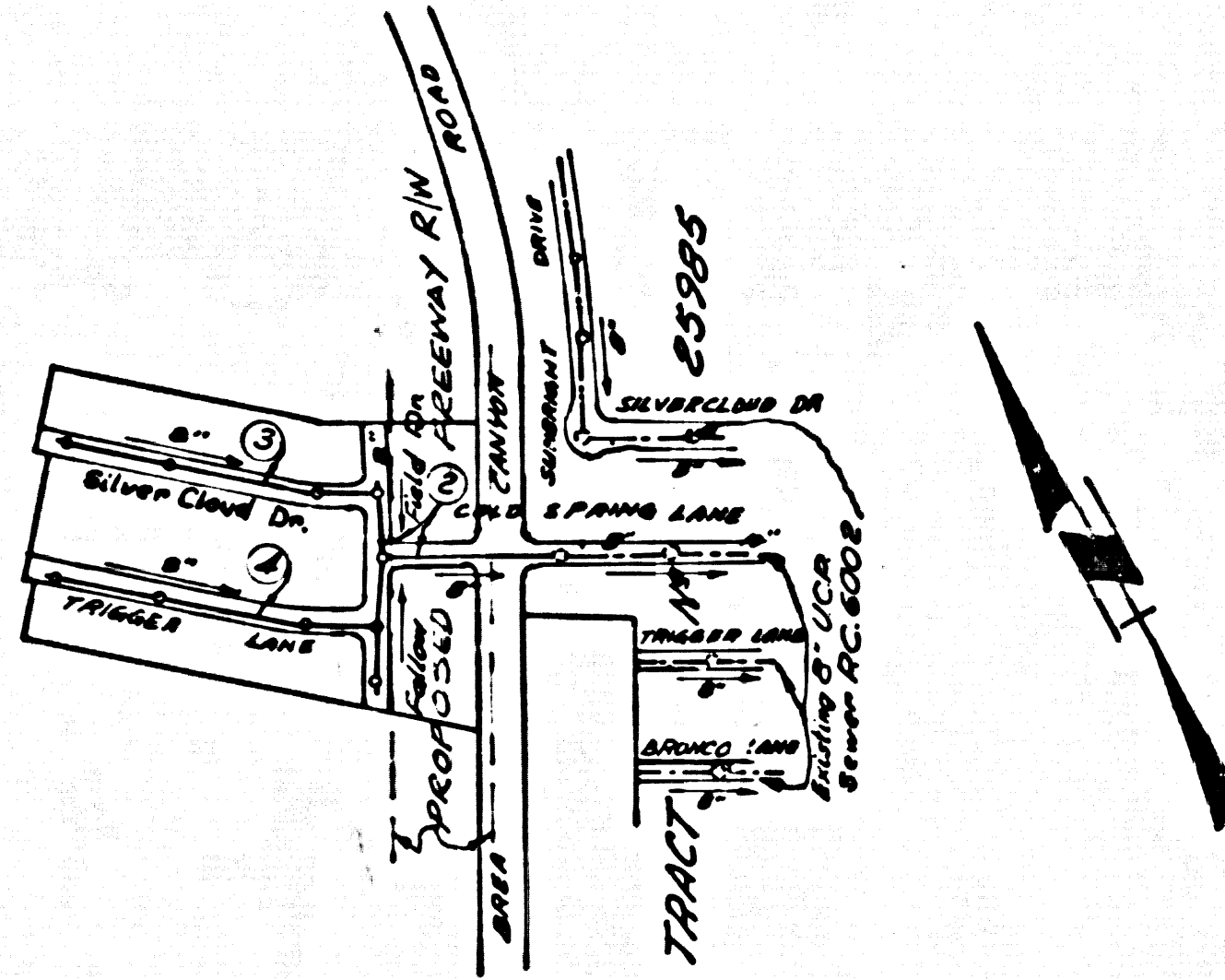


B.M. S.G.1809 ELEV 727.345
 Ad. Dept. S.M. Jay near south and cone.
 Redwood, N. 140° 53' 20" West 1/2 Brea
 Canyon Rd. 0.63 miles north of Brea
 Canyon Cut-off Rd.
OTTERBEIN 1955

UNDERGROUND STRUCTURES

All underground utilities or structure reported by the owner or others and those shown on the records examined are indicated with their approximate location and extent.
 The owner by accepting these plans or proceeding with improvements pursuant thereto agrees to assume liability and to hold undersigned harmless for any damages resulting from the existence of underground utilities or structures not reported to the undersigned; that information on the public records examined, located at variance with that reported or shown on records examined.
 The contractor is required to take due precautionary measures to protect the utilities or structures shown and any other utilities or structures found at the site. It shall be the Contractor's responsibility to notify the owners of the utilities or structures concerned before starting work.

D. D. Hoffman
 W. E. Holzhauser, P.E. No. 10213



INDEX MAP
 TRACT NO. 25988
 SCALE: 1"=600'
 P.C. 6531

REVISION:
 Page 3: Revised Grades on Silver Cloud Drive from Sta. 2+20.41 to Sta. 2+57.67
 Page 4: Revised Grades on Trigger Lane from Sta. 2+70.56 to Sta. 2+78.63
 Approved Gordon W. Smith, A.C.E. No. 11256
 Office of the County Engineer

(DOUBLE SCALE)
SAN DIMAS BLDG. DIST. NO. 10

PROFILE ALIGNMENT AND GRADE OF **P.C. 6531**
SANITARY SEWERS PAGE 2
 TO BE CONSTRUCTED IN
TRACT No. 25988

PRIVATE CONTRACT NO. 6531

W.S. 99
 2 SHEETS: 4 PAGES
 SCALE: VERT. 1"=8'
 HORIZ. 1"=40'
 April, 1968
 PREPARED IN THE OFFICES OF
DUTCH HOLZHAUSER & ASSOCIATES
 1711 HELLMAN AVENUE, ALHAMBRA, CALIFORNIA 91801
 BY: *D. D. Hoffman*
 REG. C. E. NO. 10213
 FOR LEGEND SEE PLAN NO. S-A-64

34285

- NOTES:**
- PROVIDE STAKES ON THE PROPERTY LINE OR PROPERTY LINES PRODUCED AT RIGHT ANGLES TO THE SEWER LINE AT THE CENTER LINE OF EACH MANHOLE.
 - NO REPRESENTATIVE OF THE COUNTY ENGINEER WILL SURVEY OR LAY OUT ANY PORTION OF THE WORK.
 - THE PRIVATE ENGINEER SHALL FURNISH THE COUNTY ENGINEER WITH GRADE SHEETS AND STATIONING FOR ALL HOUSE LATERALS AND MANHOLES AND SHALL PROVIDE STAKES FOR THEIR PROPER LOCATIONS WITH STATIONING. HOUSE LATERALS AND MANHOLES SHALL BE CONSTRUCTED IN A STRAIGHT ALIGNMENT AT RIGHT ANGLES FROM THE MAIN LINE SEWER EXCEPT AS SHOWN ON THE PLANS. HOUSE LATERALS SHALL NOT HAVE AN ANGLE OF LEAN THAT EXCEEDS WITH THE MAIN LINE SEWER, AND SHALL BE CONSTRUCTED WITHIN THE PARALLEL ELEVATION FOR EACH HOUSE LATERAL ON THE GRADE SHEET.
 - NO REVISIONS SHALL BE MADE IN THESE PLANS WITHOUT THE APPROVAL OF THE COUNTY ENGINEER.
 - USE STANDARD MANHOLE FRAMES AND COVERS, S-111.
 - USE EXTRA STRENGTH PIPE, ALL PIPE IS STANDARD BENCH EXCEPT AS NOTED.
 - USE MECHANICAL COMPRESSION JOINTS FOR ALL V.C.P. JOINTS PER SPEC. SEC. 36, 48 & 49.
 - RESURFACE ALL TRENCHES WITHIN PAVED AREAS TO MEET L.A. COUNTY ROAD DEPT. OR CALIF. STATE HIGHWAY REQUIREMENTS IN ACCORDANCE WITH PERMITS.
 - NO COVER SHALL BE WITHIN THREE FEET OF THE SEWER. THE SEWER SHALL BE ENCASED, PER S-1-10-70, CALIF. ST. THE FEET OF EITHER SIDE FROM THE POINT OF INTERFERENCE.
 - HOUSE LATERALS TO BE CONSTRUCTED WITH INVERTS AT PROPERTY LINE 6 FEET BELOW CURB GRADE EXCEPT AS NOTED.
 - MANHOLES SHALL BE BANK SEWER STRUCTURES PER S-1-10-70 PRECAST CONCRETE MANHOLES PER S-1-10-70 AND S-1-10-70 MANHOLE AS TO ALL REVISIONS OF LOCATIONS APPLICABLE BY THE COUNTY ENGINEER.
 - FOR ALLOWABLE LEAKAGE TEST USE FORMULA NO. 2, SPEC. SEC. 54.
 - MANHOLE TOPS IN UNIMPROVED RIGHTS-OF-WAY TO BE SIX INCHES ABOVE FINISHED GRADE.
 - THE CONTRACTOR SHALL NOTIFY THE CONSTRUCTION DIVISION BY TELEPHONE, MADISON 9-474, EXT. 251 AT LEAST TWENTY-FOUR HOURS BEFORE STARTING ANY WORK UNDER THIS CONTRACT.
 - WHERE EVER AROUND WATER IS ENCOUNTERED DURING THE CONSTRUCTION OF THE SEWERS, THE V.C.P. JOINTS SHALL BE AT JOINT COMPANIES PER SPEC. SEC. 23 & 24 OF MECHANICAL COMPRESSION JOINTS PER SPEC. SEC. 23 & 24.
 - AT DURING THE COURSE OF CONSTRUCTION IT IS DEEMED THAT THERE IS LESS THAN FOUR FEET OF COVER OVER THE TOP OF A MAIN LINE OR HOUSE LATERAL V.C.P. SEWER WHICH IS NOT INDICATED ON THE PLANS, THE TOP SHALL BE ENCASED PER S-1-10-70, CALIF. UNLESS OTHERWISE APPROVED BY THE COUNTY ENGINEER.
 - ALL STATE AND LOCAL TRENCH SAFETY ORDERS WILL BE RIGIDLY ENFORCED.

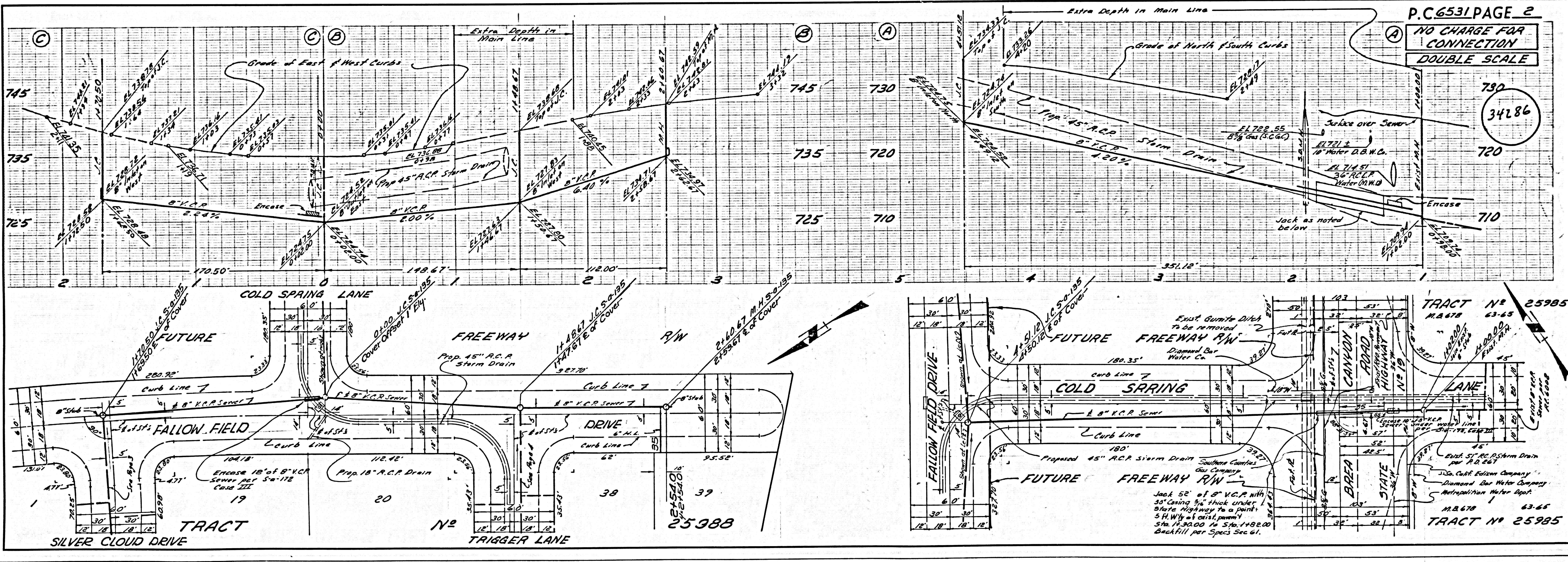
NO CONNECTIONS FOR THE DISPOSAL OF INDUSTRIAL WASTES SHALL BE MADE TO SEWERS SHOWN ON THESE DRAWINGS WITHOUT WRITTEN PERMISSION FROM THE CHIEF ENGINEER AND GENERAL MANAGER OF THE COUNTY SANITATION DISTRICT.

COLLECT CHARGES AS INDICATED
William Scott

REVISION:
 Remove 17' of jacking from Sta. 1+82.00 to Sta. 1+99.00 on Page 2.
 Approved P. F. Welling 9-12-68
 R.C.E. No. 116360
 OFFICE OF THE COUNTY ENGINEER

NOTE:
 GRADES TO WHICH THIS IMPROVEMENT IS TO BE CONSTRUCTED ARE SHOWN ON PLANS AND PROFILE. GRADE POINTS FOR TOP OF CURB, CENTER LINE OF STREETS OR CENTER LINE OF ALLEYS ARE SHOWN BY CIRCLES ON PROFILE. ALL POINTS BETWEEN DESIGNATED POINTS THE GRADE SHALL BE ESTABLISHED SO AS TO CONFORM TO A STRAIGHT LINE DRAWN BETWEEN SAID DESIGNATED POINTS.
 ELEVATIONS ARE IN FEET ABOVE U.S.C. & G.S. SEA LEVEL DATUM OF 1929.
 THIS DRAWING AND THE DATA HEREON ARE HEREBY MADE A PART OF THE SPECIFICATIONS.
 WORK SHALL BE CONSTRUCTED ACCORDING TO SPECIFICATIONS DATED MARCH 28, 1968 ON FILE IN THE OFFICE OF THE COUNTY ENGINEER AND SHALL BE FURNISHED ONLY IN THE OFFICE OF THE COUNTY ENGINEER.
 BEFORE WORK CAN BE STARTED, THE CONTRACTOR MUST OBTAIN A PERMIT TO EXCAVATE IN COUNTY STREETS FROM THE L.A. COUNTY ROAD DEPT., DISTRICT OFFICE NO. 4, AND MP & FEE 75. THE COUNTY ENGINEER, ROOM 330 COUNTY ENGINEER BUILDING, 100 WEST SECOND STREET, LOS ANGELES, CALIFORNIA 90012.
 SUFFICIENT TO COVER THE COST OF CONSTRUCTION INSPECTION AND RECORD PLANS.
 APPROVAL OF THIS PLAN BY THE COUNTY OF LOS ANGELES DOES NOT CONSTITUTE A REPRESENTATION AS TO THE ACCURACY OF THE LOCATION OF OR THE EXISTENCE OR NON-EXISTENCE OF ANY UNDERGROUND UTILITY PIPE, OR STRUCTURE WITHIN THE LIMITS OF THIS PROJECT. THIS NOTE APPLIES TO ALL PAGES.
 IF WORK IS TO BE DONE IN A STATE HIGHWAY, A PERMIT MUST BE OBTAINED FROM THE STATE OF CALIFORNIA, DIVISION OF HIGHWAYS, 120 SOUTH SPRING STREET, LOS ANGELES, CALIFORNIA.

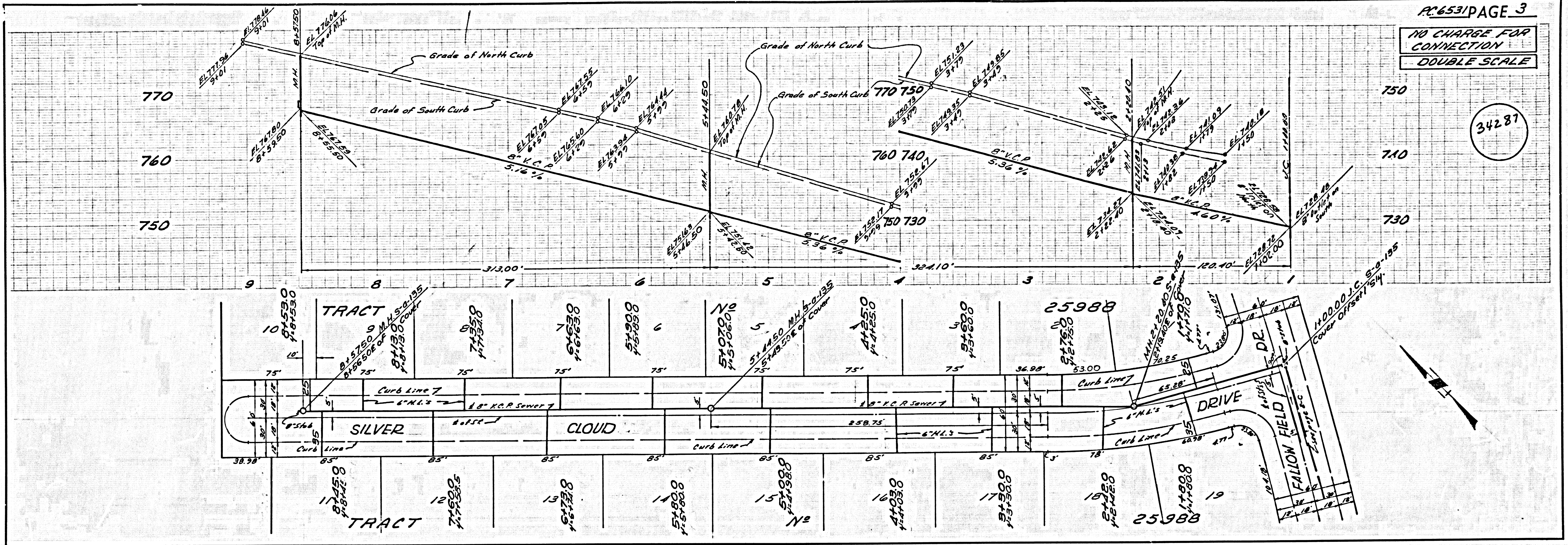
COUNTY OF LOS ANGELES, CALIFORNIA
 APPROVED, JOHN A. LAMBE, COUNTY ENGINEER APPROVED, J.D. PARKHURST, CHIEF ENGINEER
 CO. SAN. DIST. NO. 21
 BY: *Richard E. Kline* SANITATION ENGINEER BY: *J. D. Parkhurst* CHIEF ENGINEER
 SUBMITTED BY: *Arnold D. Smith* SAN DIMAS REGIONAL OFFICE
 CHECKED BY: *Stanley A. ...* 6-7-63
 J.N. 0360.08



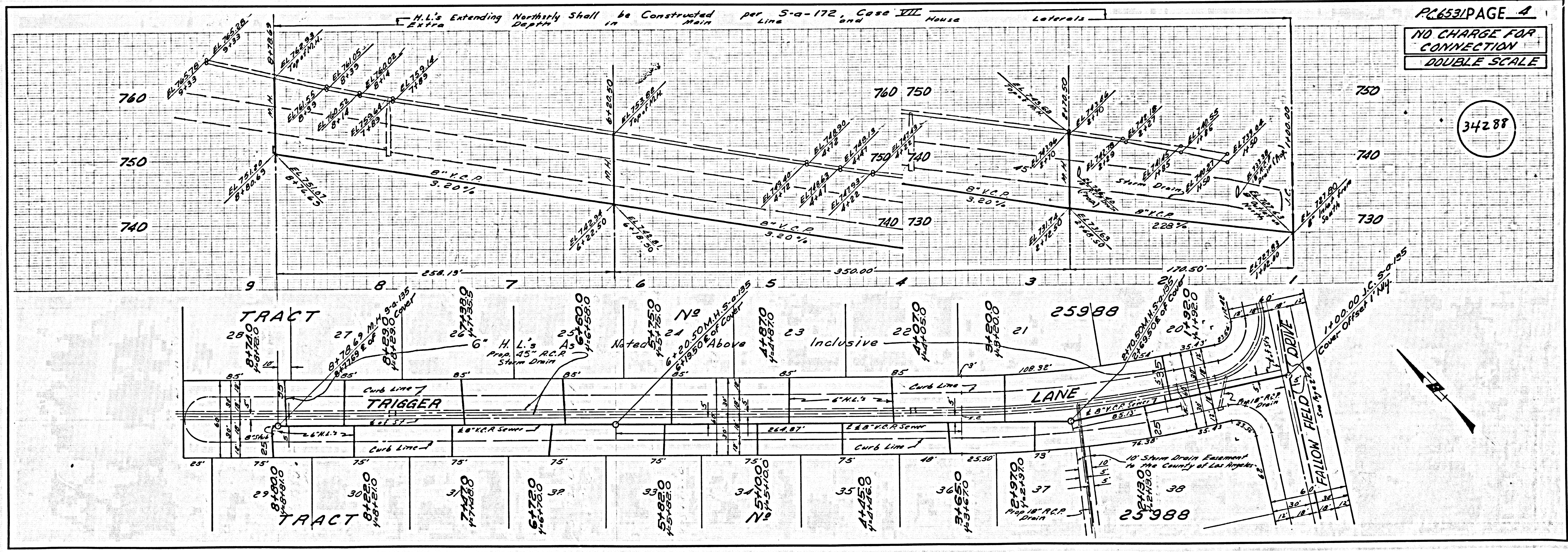
P.C. 6531 PAGE 2
 NO CHARGE FOR CONNECTION
 DOUBLE SCALE
 34286

TRACT No. 25988
 M.A. 678 63-65
 TRACT No. 25985

NO CHARGE FOR CONNECTION
DOUBLE SCALE



NO CHARGE FOR CONNECTION
DOUBLE SCALE



S. S. 1st L.A. COUNTY SEWER SHEET NO. 2 S. S. CALL BLUEPRINT CO.