

UNIVERSAL CITY
PLAZA

UNIVERSAL CITY, CALIFORNIA

SKIDMORE
OWINGS &
MERRILL
ARCHITECTS
ONE BUSH STREET
SAN FRANCISCO

APPROVED FOR THE OWNER
BY: _____

APPROVED FOR THE ARCHITECTS
BY: _____

DRAWN BY: *H. Harryman* JOB NO. 4-63
CHECKED BY: DATE April 27, 1963

REVISIONS

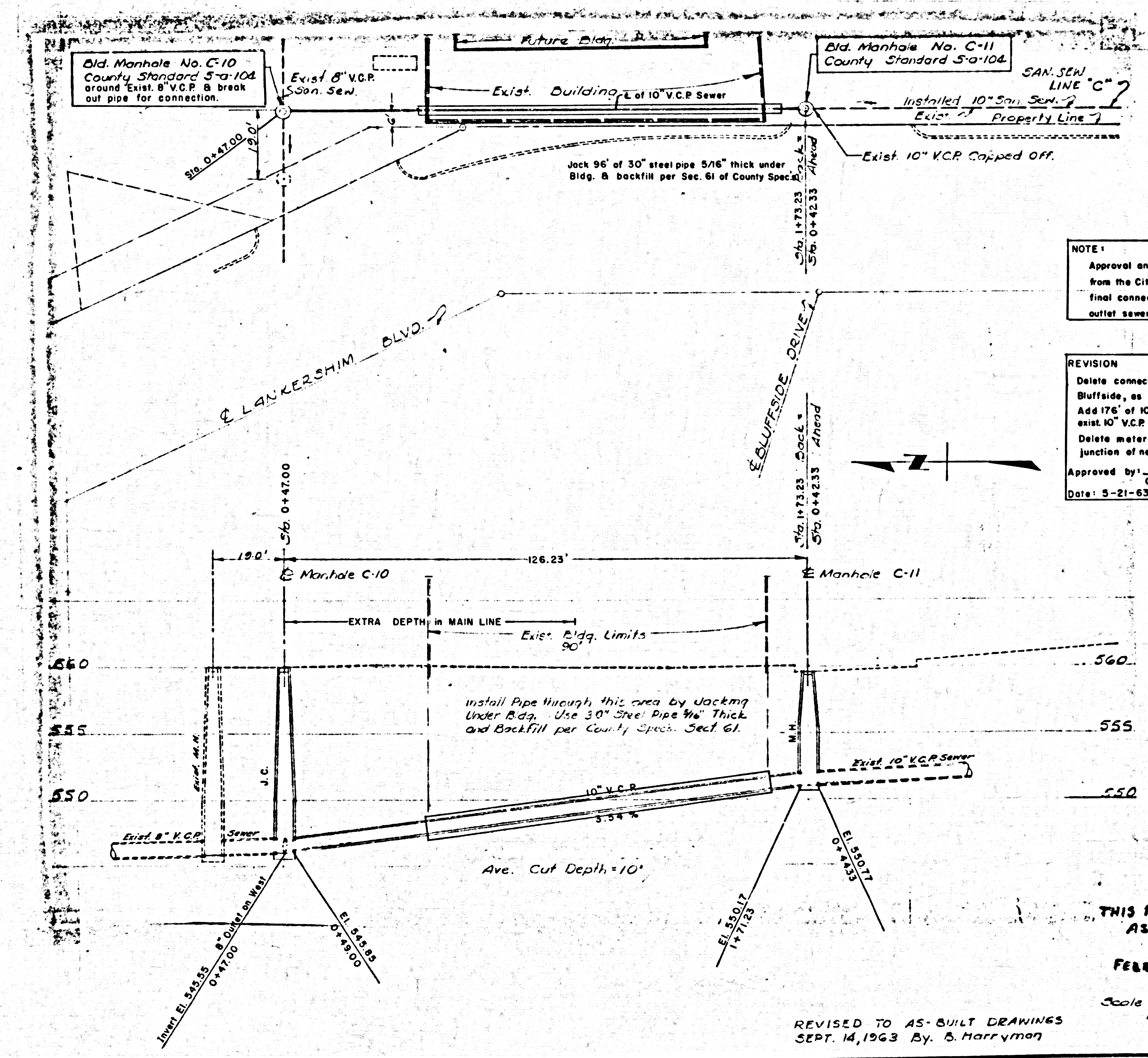
NO. DESCRIPTION

33992
1532

EXTENSION TO SANITARY
SEWER LINE "C"

PC. 6532

SEC. 1



NOTE:
Approval and permits must be obtained from the City of Los Angeles before final connections are made to the outlet sewer.

REVISION
Delete connection to 10" V.C.P. City stub at Bluffside, as County storm drain has cut it. Add 176' of 10" V.C.P. (96" liner) going into exist 10" V.C.P. in North Parking Lot. Delete meter M.H. C-2 and add M.H. over junction of new and exist 10" sewer.

Approved by: *[Signature]* RE 10443
Office of County Engr.
Date: 5-21-63

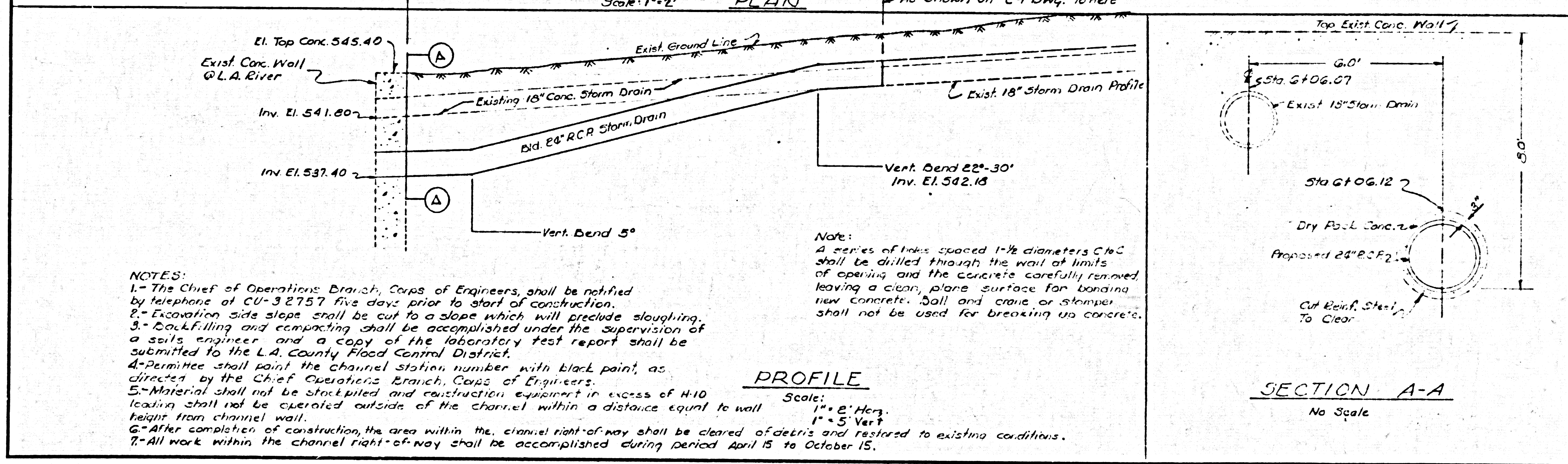
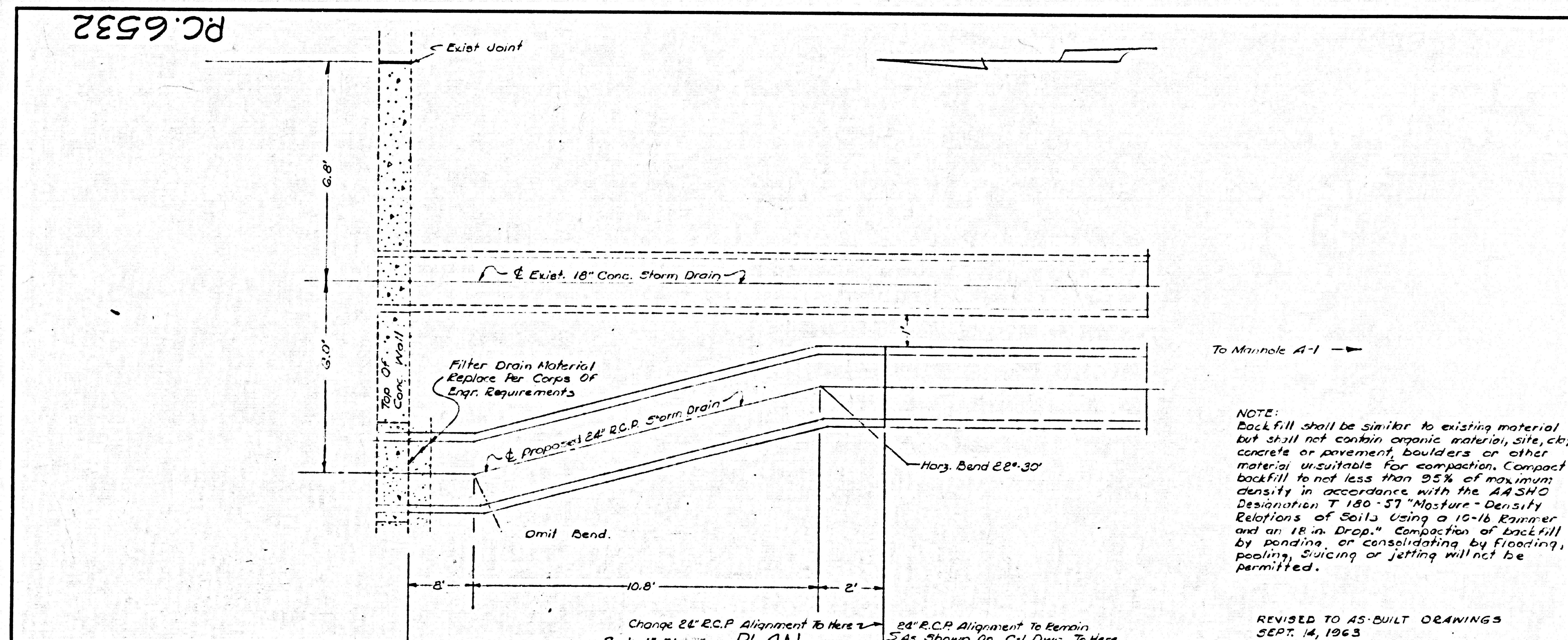
[Signature]
Street Eng. 714

THIS PROJECT ACCEPTED
AS A PUBLIC
FACILITY 7, 1964
FEBRUARY

Scale 1" = 16' Horz.
1" = 5' Vert.

REVISED TO AS-BUILT DRAWINGS
SEPT. 14, 1963 By: B. Harryman

PC.6532



- NOTES:**
- 1-The Chief of Operations Branch, Corps of Engineers, shall be notified by telephone at CU-32757 five days prior to start of construction.
 - 2-Excavation side slope shall be cut to a slope which will preclude sloughing.
 - 3-Backfilling and compacting shall be accomplished under the supervision of a soils engineer and a copy of the laboratory test report shall be submitted to the L.A. County Flood Control District.
 - 4-Permittee shall paint the channel station number with black paint, as directed by the Chief Operations Branch, Corps of Engineers.
 - 5-Material shall not be stockpiled and construction equipment in excess of 4:10 leading shall not be operated outside of the channel within a distance equal to wall height from channel wall.
 - 6-After completion of construction, the area within the channel right-of-way shall be cleared of debris and restored to existing conditions.
 - 7-All work within the channel right-of-way shall be accomplished during period April 15 to October 15.

NOTE:
Backfill shall be similar to existing material but shall not contain organic material, silt, clay, concrete or pavement, boulders or other material unsuitable for compaction. Compact backfill to not less than 95% of maximum density in accordance with the ASTM Designation T 190-57 "Moisture-Density Relations of Soils Using a 10-lb Rammer and an 18 in. Drop." Compaction of backfill by ponding or consolidating by flooding, peeling, sluicing or jetting will not be permitted.

REVISED TO AS-BUILT DRAWINGS
SEPT. 14, 1963

UNIVERSAL CITY
PLAZA

Universal City, California

SKIDMORE
OWINGS &
MERRILL
ARCHITECTS
ONE BUSH STREET
SAN FRANCISCO

APPROVED FOR THE OWNER

BY:

APPROVED FOR THE ARCHITECTS

BY:

DRAWN BY: JOB NO.:

CHECKED BY: DATE:

April 30, 1963

REVISIONS

NO. DESCRIPTION (INDICATE PAGE NO.) BY DATE

33993

ALIGNMENT CHANGE
OF STORM DRAIN
LINE "A" @ LOS
ANGELES RIVER
FOR CONNECTION TO
RIVER.

PC.6532

SKC-2-Rev.



NOTES

1. Existing sanitary sewer lines shown on the drawings are to be replaced with County Standard No. 43 City Standard A.R.C. 1700. All existing sanitary sewer lines to be replaced with County Standard No. 43 City Standard A.R.C. 1700. All existing sanitary sewer lines to be replaced with County Standard No. 43 City Standard A.R.C. 1700.

2. Existing storm drain lines shown on the drawings are to be replaced with County Standard No. 43 City Standard A.R.C. 1700. All existing storm drain lines to be replaced with County Standard No. 43 City Standard A.R.C. 1700.

3. Existing gas lines shown on the drawings are to be replaced with County Standard No. 43 City Standard A.R.C. 1700. All existing gas lines to be replaced with County Standard No. 43 City Standard A.R.C. 1700.

4. All existing and other locations were established by field notes and other data furnished by the owner.

5. All existing and other locations were established by field notes and other data furnished by the owner.

6. All existing and other locations were established by field notes and other data furnished by the owner.

7. All existing and other locations were established by field notes and other data furnished by the owner.

8. All existing and other locations were established by field notes and other data furnished by the owner.

9. All existing and other locations were established by field notes and other data furnished by the owner.

10. All existing and other locations were established by field notes and other data furnished by the owner.

3394

EASEMENT NOTES:

This is to certify that the easement shown on this drawing is for the purpose of the relocation of the sanitary sewer, storm drain, and gas lines as shown on this drawing. The easement is for the purpose of the relocation of the sanitary sewer, storm drain, and gas lines as shown on this drawing.

Issued to General Contract Subject, May 9, 1963.

UTILITIES, EARTHWORK & PILING FOR UNIVERSAL CITY PLAZA

UNIVERSAL CITY PHASE I, CALIFORNIA

SKIDMORE, OWINGS & MERRILL ARCHITECTS

ONE BUSH STREET, SAN FRANCISCO

UTILITIES RELOCATION SANITARY SEWER, STORM DRAIN, & GAS PLAN RC. 6532

| | |
|-----------------------------|-----------------|
| APPROVED FOR THE OWNER | CHECKED BY |
| BY: G. E. H. [Signature] | By: [Signature] |
| APPROVED FOR THE ARCHITECTS | DATE |
| BY: John Merrill | 12/14/63 |

REVISED TO AS-BUILT DRAWINGS
SEPT. 14, 1963. BY: S. H. HANLYN

SCALE 1"=16'

PC 6532

PC 6532

A

A

B

B

B

B



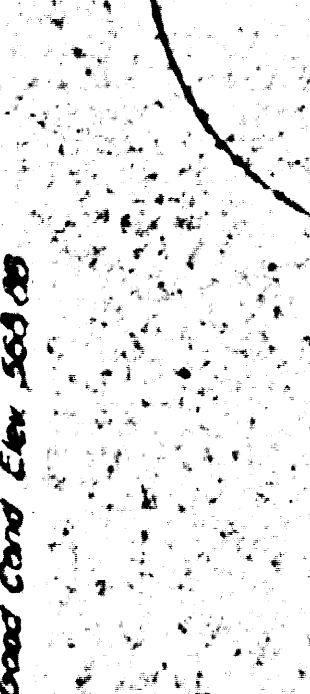
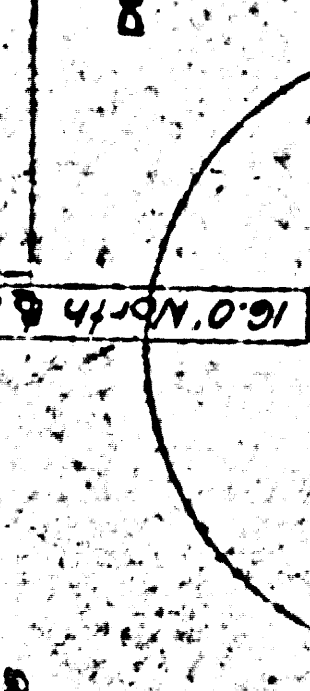
LEGEND OF UTILITY CONSTRUCTION

LEGEND

| | |
|------------|-----------------------------------|
| --- 6\"/> | Exist. San Sewer (Use in Place) |
| --- 6\"/> | Exist. San Sewer (Abandon) |
| --- 6\"/> | New San Sewer or Relocated |
| --- 18\"/> | Exist. Storm Drain (Use in Place) |
| --- 18\"/> | New Storm Drain or Relocated |
| --- 4\"/> | Exist. Gas (Use in Place) |
| --- 4\"/> | Exist. Gas (Abandon) |
| --- 4\"/> | New Gas or Relocated |
| --- 4\"/> | New Inappropriate Gas |

Note: Profile Sheet C-3
See Also Construction Information

Note: When San Sewers and City Standards are Referenced to Mean The City of Los Angeles and County of Los Angeles



D



NOTES:

1. Utility Control based on Los Angeles City Engineers & on Construction. Check the location of ALL UTILITIES on the ground before construction. All existing utilities shown on this drawing were located by the City of Los Angeles on April 28, 1963. No other utilities were shown on the ground at the time of this survey.

2. Vertical Control based on Los Angeles City Engineers' Vertical Control Run 1955 Adjustment. The following L.A.C.E. elevations were used for the vertical control: 1. 1000' at the corner of the intersection of 10th Street and 10th Street. 2. 1000' at the corner of the intersection of 10th Street and 10th Street. 3. 1000' at the corner of the intersection of 10th Street and 10th Street.

3. All existing and proposed utilities were established by field measurements from existing monuments unless otherwise noted. Changes are not shown in a straight line.

4. Meter and water lines are in final condition. Gas order very strong as shown on sheet for this drawing.

33995

EASEMENT NOTES:

This is to certify that the above shown T.Y. Riley of the insurance to the State of California, No. 2281, dated 10/1/57, and by 2/4/58, there are no restrictive easements affecting the portion of the property depicted as shown above shown this (N.C.S. 10000) are taken from the above mentioned T.Y. Riley.

D

Issued to General Contract Users May 6, 1963

REVISED TO AS-BUILT DRAWINGS
SEPT 12, 1963, BY S. HARRISON

**UTILITIES, EARTHWORK & PILING
FOR
UNIVERSAL CITY PLAZA**

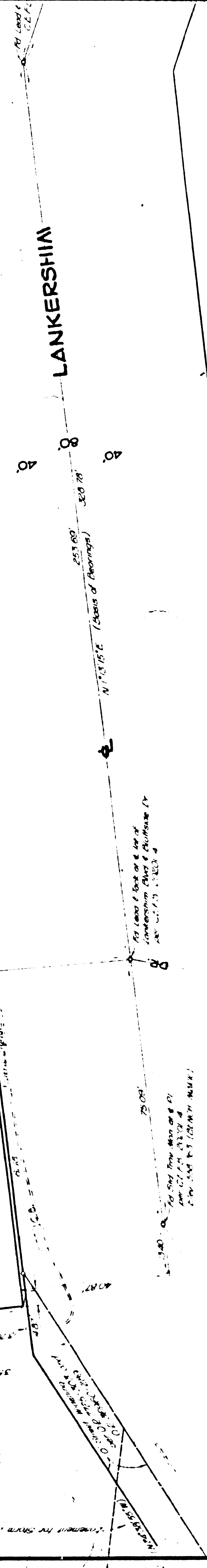
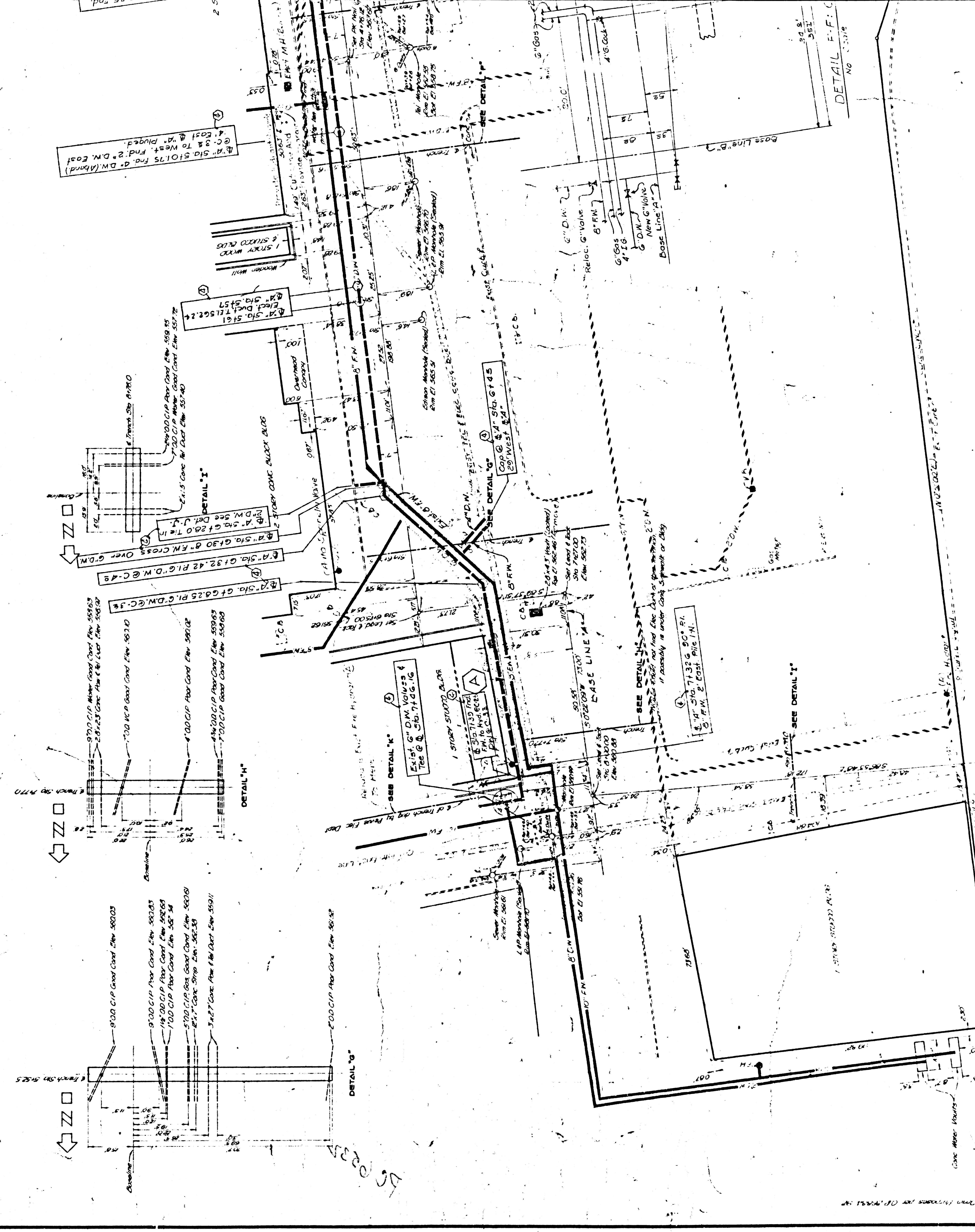
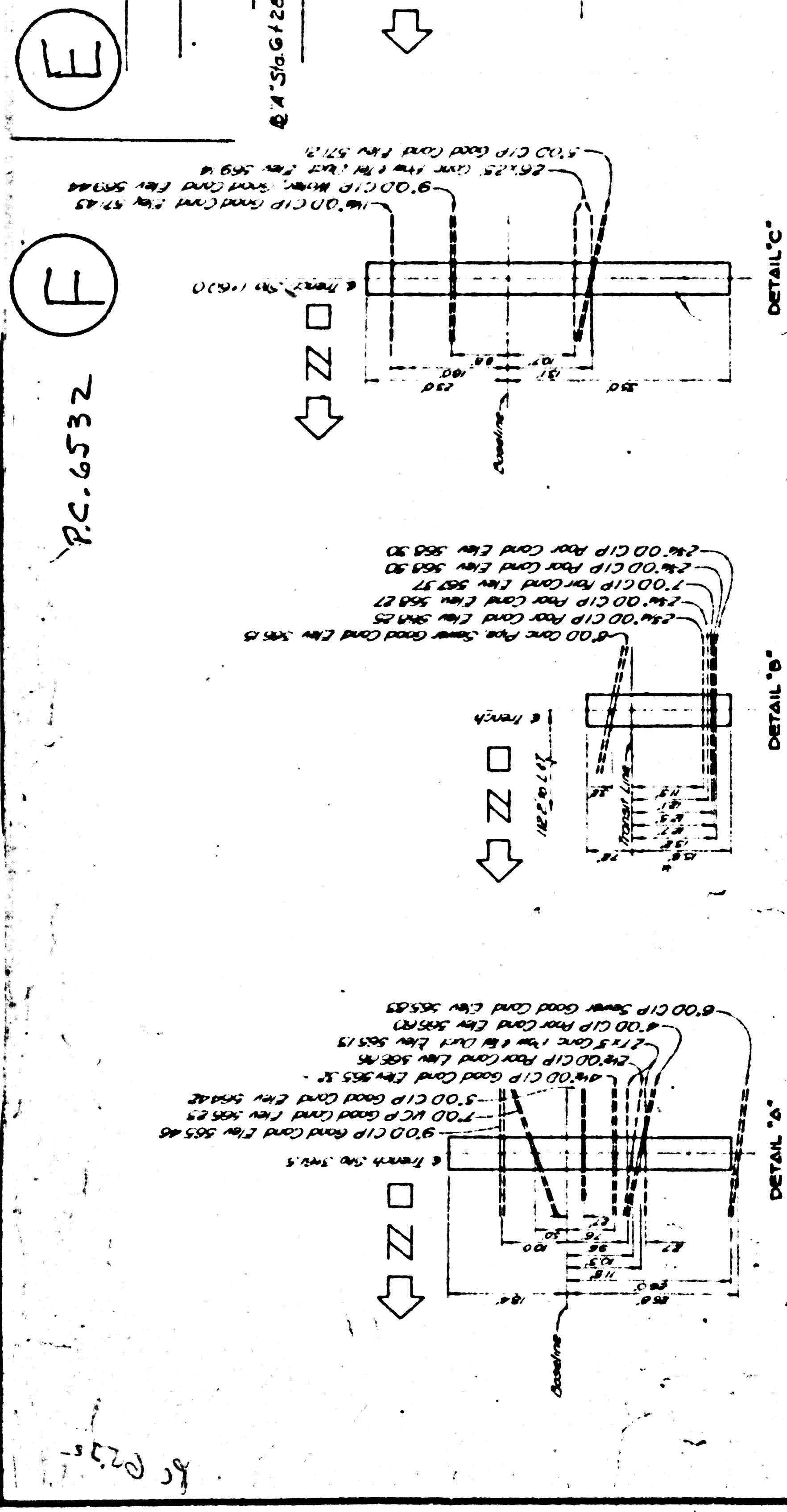
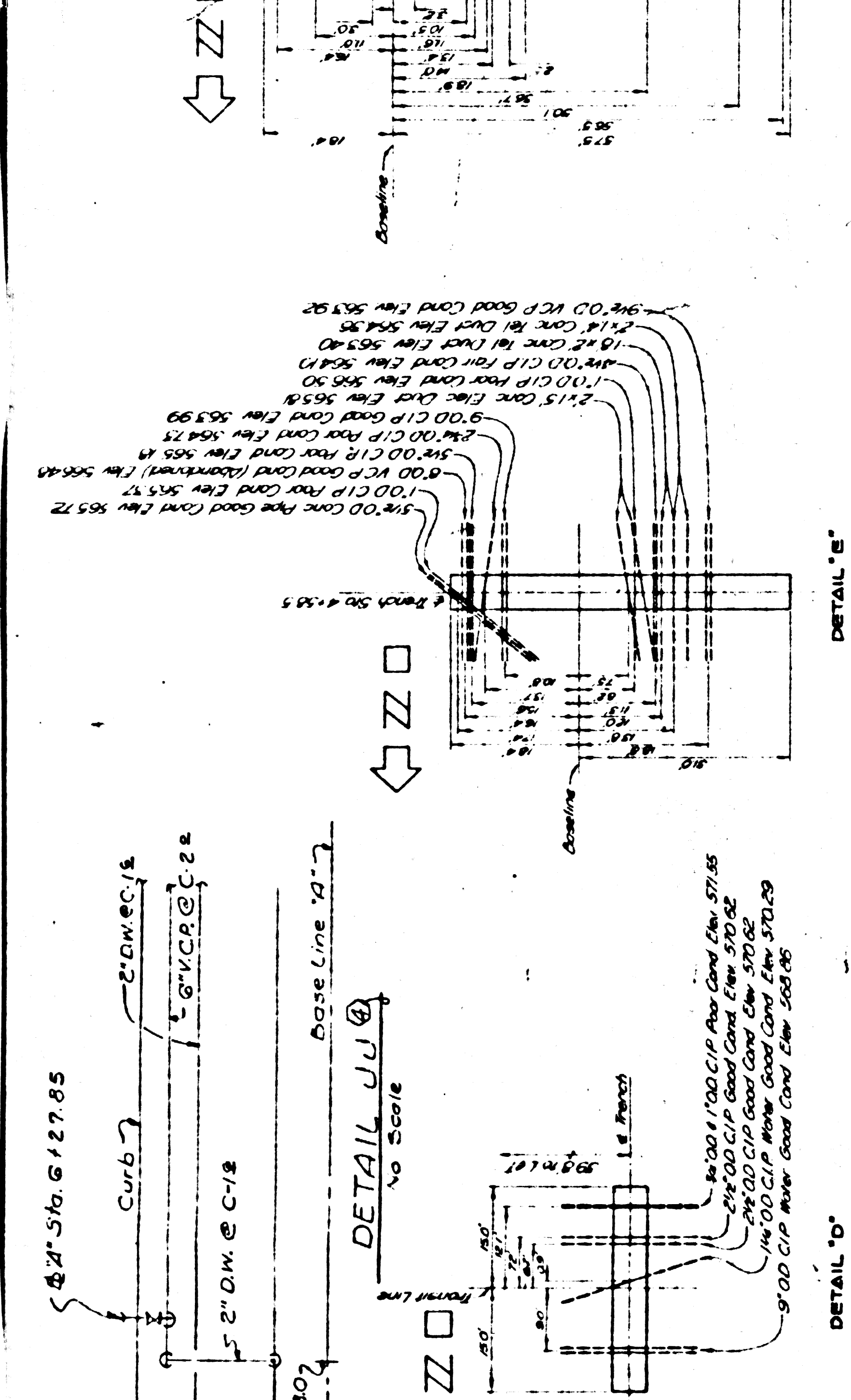
PHASE I
UNIVERSAL CITY CALIFORNIA
SKIDMORE, OWINGS & MERRILL
ARCHITECTS
ONE BUSH STREET
SAN FRANCISCO

**UTILITIES RELOCATION PC. 6532
DOMESTIC WATER, FIRE PREVENTION WATER,
AND COMPRESSED AIR PLAN**

| | | |
|-------------------------------------|------------|------------|
| APPROVED FOR THE OWNER | DRAWN BY | CHECKED BY |
| <i>[Signature]</i> | HARRISON | |
| APPROVED FOR THE ARCHITECTS JOB NO. | DATE | |
| 12914-C2 | FEB 26, 63 | |
| BY: <i>[Signature]</i> | | |

C.2

PC 6532 (E) (F)



DETAIL F.F.C.
NO. 11111

LEGEND

| | |
|--|------------------|
| | 12" Dia. Sewer |
| | 18" Dia. Sewer |
| | 24" Dia. Sewer |
| | 30" Dia. Sewer |
| | 36" Dia. Sewer |
| | 42" Dia. Sewer |
| | 48" Dia. Sewer |
| | 54" Dia. Sewer |
| | 60" Dia. Sewer |
| | 66" Dia. Sewer |
| | 72" Dia. Sewer |
| | 78" Dia. Sewer |
| | 84" Dia. Sewer |
| | 90" Dia. Sewer |
| | 96" Dia. Sewer |
| | 102" Dia. Sewer |
| | 108" Dia. Sewer |
| | 114" Dia. Sewer |
| | 120" Dia. Sewer |
| | 126" Dia. Sewer |
| | 132" Dia. Sewer |
| | 138" Dia. Sewer |
| | 144" Dia. Sewer |
| | 150" Dia. Sewer |
| | 156" Dia. Sewer |
| | 162" Dia. Sewer |
| | 168" Dia. Sewer |
| | 174" Dia. Sewer |
| | 180" Dia. Sewer |
| | 186" Dia. Sewer |
| | 192" Dia. Sewer |
| | 198" Dia. Sewer |
| | 204" Dia. Sewer |
| | 210" Dia. Sewer |
| | 216" Dia. Sewer |
| | 222" Dia. Sewer |
| | 228" Dia. Sewer |
| | 234" Dia. Sewer |
| | 240" Dia. Sewer |
| | 246" Dia. Sewer |
| | 252" Dia. Sewer |
| | 258" Dia. Sewer |
| | 264" Dia. Sewer |
| | 270" Dia. Sewer |
| | 276" Dia. Sewer |
| | 282" Dia. Sewer |
| | 288" Dia. Sewer |
| | 294" Dia. Sewer |
| | 300" Dia. Sewer |
| | 306" Dia. Sewer |
| | 312" Dia. Sewer |
| | 318" Dia. Sewer |
| | 324" Dia. Sewer |
| | 330" Dia. Sewer |
| | 336" Dia. Sewer |
| | 342" Dia. Sewer |
| | 348" Dia. Sewer |
| | 354" Dia. Sewer |
| | 360" Dia. Sewer |
| | 366" Dia. Sewer |
| | 372" Dia. Sewer |
| | 378" Dia. Sewer |
| | 384" Dia. Sewer |
| | 390" Dia. Sewer |
| | 396" Dia. Sewer |
| | 402" Dia. Sewer |
| | 408" Dia. Sewer |
| | 414" Dia. Sewer |
| | 420" Dia. Sewer |
| | 426" Dia. Sewer |
| | 432" Dia. Sewer |
| | 438" Dia. Sewer |
| | 444" Dia. Sewer |
| | 450" Dia. Sewer |
| | 456" Dia. Sewer |
| | 462" Dia. Sewer |
| | 468" Dia. Sewer |
| | 474" Dia. Sewer |
| | 480" Dia. Sewer |
| | 486" Dia. Sewer |
| | 492" Dia. Sewer |
| | 498" Dia. Sewer |
| | 504" Dia. Sewer |
| | 510" Dia. Sewer |
| | 516" Dia. Sewer |
| | 522" Dia. Sewer |
| | 528" Dia. Sewer |
| | 534" Dia. Sewer |
| | 540" Dia. Sewer |
| | 546" Dia. Sewer |
| | 552" Dia. Sewer |
| | 558" Dia. Sewer |
| | 564" Dia. Sewer |
| | 570" Dia. Sewer |
| | 576" Dia. Sewer |
| | 582" Dia. Sewer |
| | 588" Dia. Sewer |
| | 594" Dia. Sewer |
| | 600" Dia. Sewer |
| | 606" Dia. Sewer |
| | 612" Dia. Sewer |
| | 618" Dia. Sewer |
| | 624" Dia. Sewer |
| | 630" Dia. Sewer |
| | 636" Dia. Sewer |
| | 642" Dia. Sewer |
| | 648" Dia. Sewer |
| | 654" Dia. Sewer |
| | 660" Dia. Sewer |
| | 666" Dia. Sewer |
| | 672" Dia. Sewer |
| | 678" Dia. Sewer |
| | 684" Dia. Sewer |
| | 690" Dia. Sewer |
| | 696" Dia. Sewer |
| | 702" Dia. Sewer |
| | 708" Dia. Sewer |
| | 714" Dia. Sewer |
| | 720" Dia. Sewer |
| | 726" Dia. Sewer |
| | 732" Dia. Sewer |
| | 738" Dia. Sewer |
| | 744" Dia. Sewer |
| | 750" Dia. Sewer |
| | 756" Dia. Sewer |
| | 762" Dia. Sewer |
| | 768" Dia. Sewer |
| | 774" Dia. Sewer |
| | 780" Dia. Sewer |
| | 786" Dia. Sewer |
| | 792" Dia. Sewer |
| | 798" Dia. Sewer |
| | 804" Dia. Sewer |
| | 810" Dia. Sewer |
| | 816" Dia. Sewer |
| | 822" Dia. Sewer |
| | 828" Dia. Sewer |
| | 834" Dia. Sewer |
| | 840" Dia. Sewer |
| | 846" Dia. Sewer |
| | 852" Dia. Sewer |
| | 858" Dia. Sewer |
| | 864" Dia. Sewer |
| | 870" Dia. Sewer |
| | 876" Dia. Sewer |
| | 882" Dia. Sewer |
| | 888" Dia. Sewer |
| | 894" Dia. Sewer |
| | 900" Dia. Sewer |
| | 906" Dia. Sewer |
| | 912" Dia. Sewer |
| | 918" Dia. Sewer |
| | 924" Dia. Sewer |
| | 930" Dia. Sewer |
| | 936" Dia. Sewer |
| | 942" Dia. Sewer |
| | 948" Dia. Sewer |
| | 954" Dia. Sewer |
| | 960" Dia. Sewer |
| | 966" Dia. Sewer |
| | 972" Dia. Sewer |
| | 978" Dia. Sewer |
| | 984" Dia. Sewer |
| | 990" Dia. Sewer |
| | 996" Dia. Sewer |
| | 1002" Dia. Sewer |
| | 1008" Dia. Sewer |
| | 1014" Dia. Sewer |
| | 1020" Dia. Sewer |
| | 1026" Dia. Sewer |
| | 1032" Dia. Sewer |
| | 1038" Dia. Sewer |
| | 1044" Dia. Sewer |
| | 1050" Dia. Sewer |
| | 1056" Dia. Sewer |
| | 1062" Dia. Sewer |
| | 1068" Dia. Sewer |
| | 1074" Dia. Sewer |
| | 1080" Dia. Sewer |
| | 1086" Dia. Sewer |
| | 1092" Dia. Sewer |
| | 1098" Dia. Sewer |
| | 1104" Dia. Sewer |
| | 1110" Dia. Sewer |
| | 1116" Dia. Sewer |
| | 1122" Dia. Sewer |
| | 1128" Dia. Sewer |
| | 1134" Dia. Sewer |
| | 1140" Dia. Sewer |
| | 1146" Dia. Sewer |
| | 1152" Dia. Sewer |
| | 1158" Dia. Sewer |
| | 1164" Dia. Sewer |
| | 1170" Dia. Sewer |
| | 1176" Dia. Sewer |
| | 1182" Dia. Sewer |
| | 1188" Dia. Sewer |
| | 1194" Dia. Sewer |
| | 1200" Dia. Sewer |

R2.6532 (E) (F)

BLUESIDE

LANKERSHIM

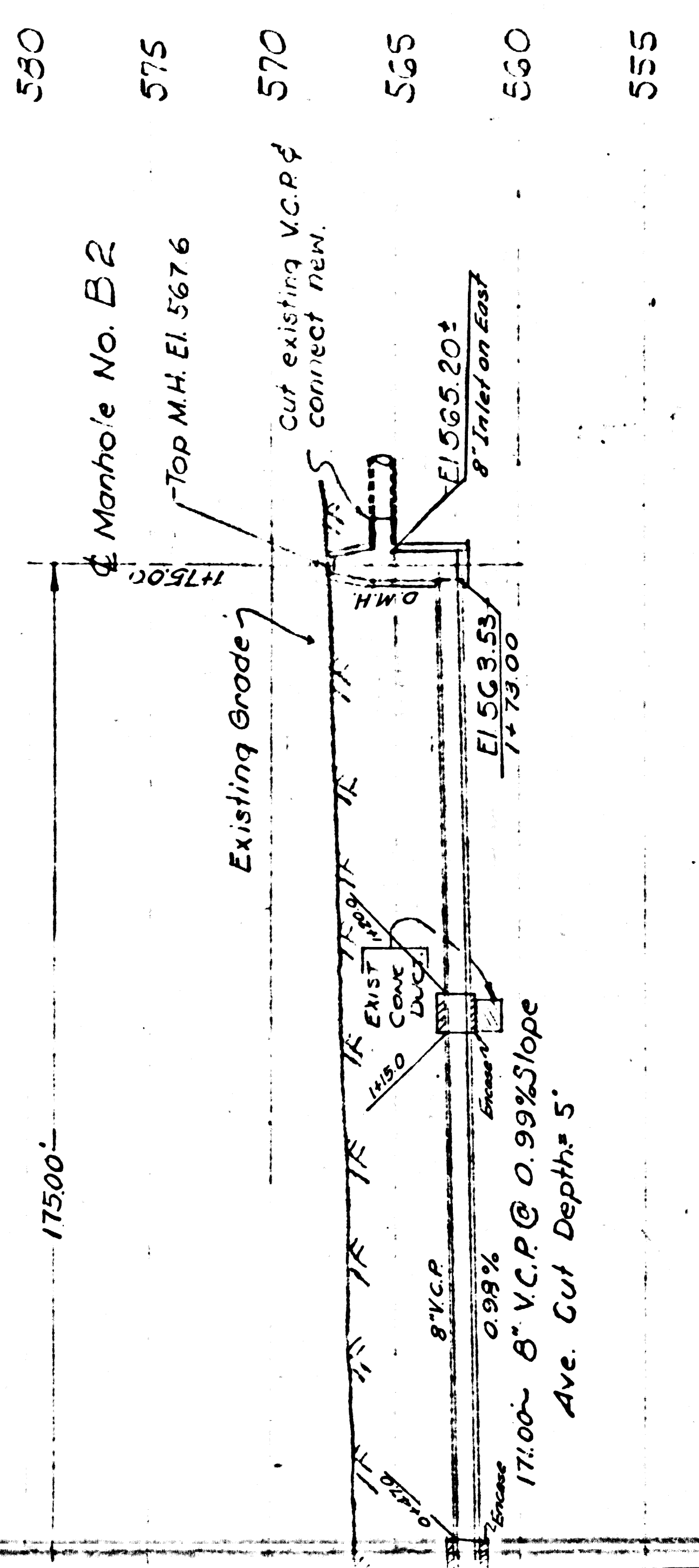
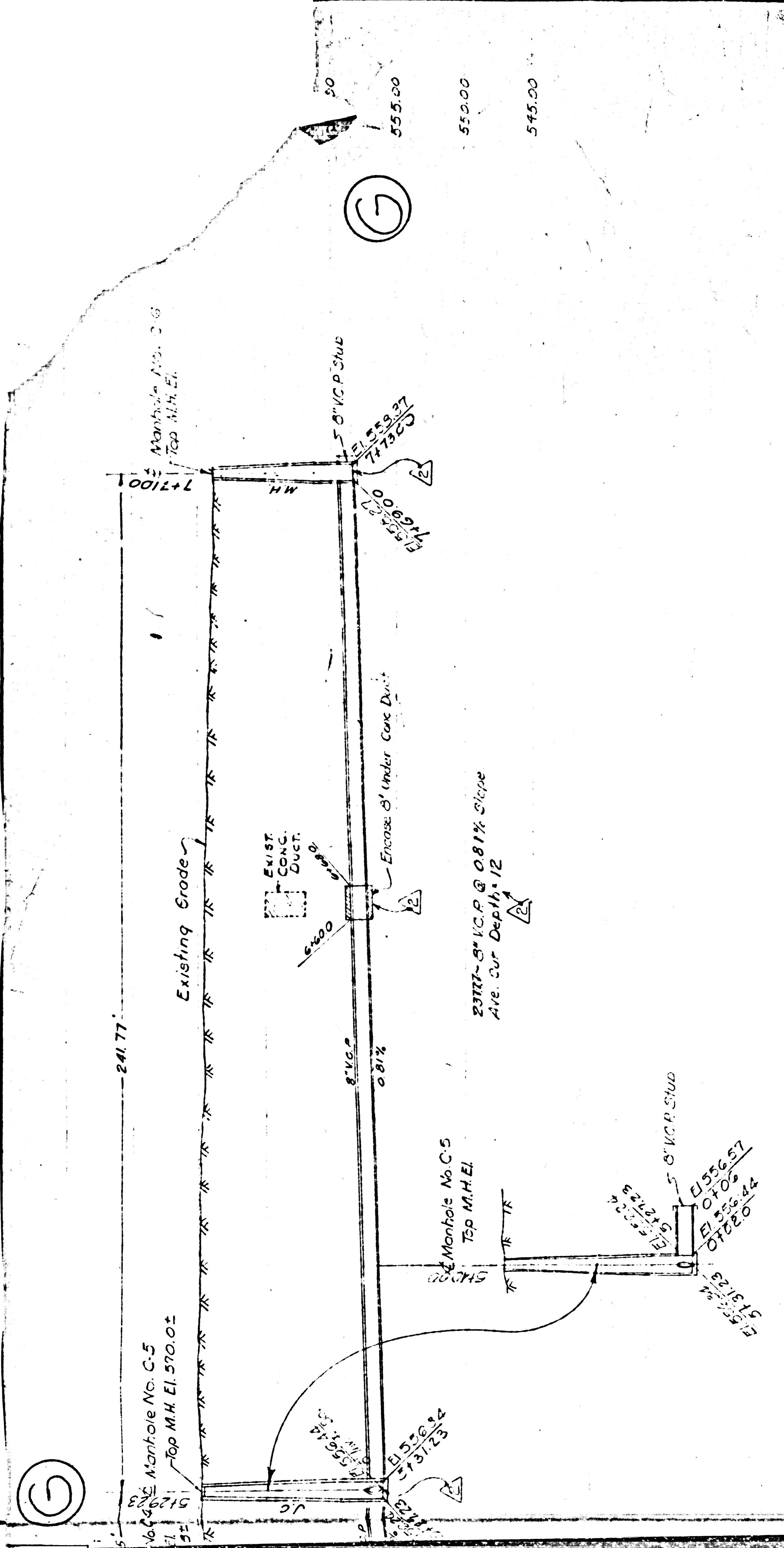
NO. 11111

PC 6532 (E) (F)

BLUESIDE

LANKERSHIM

NO. 11111



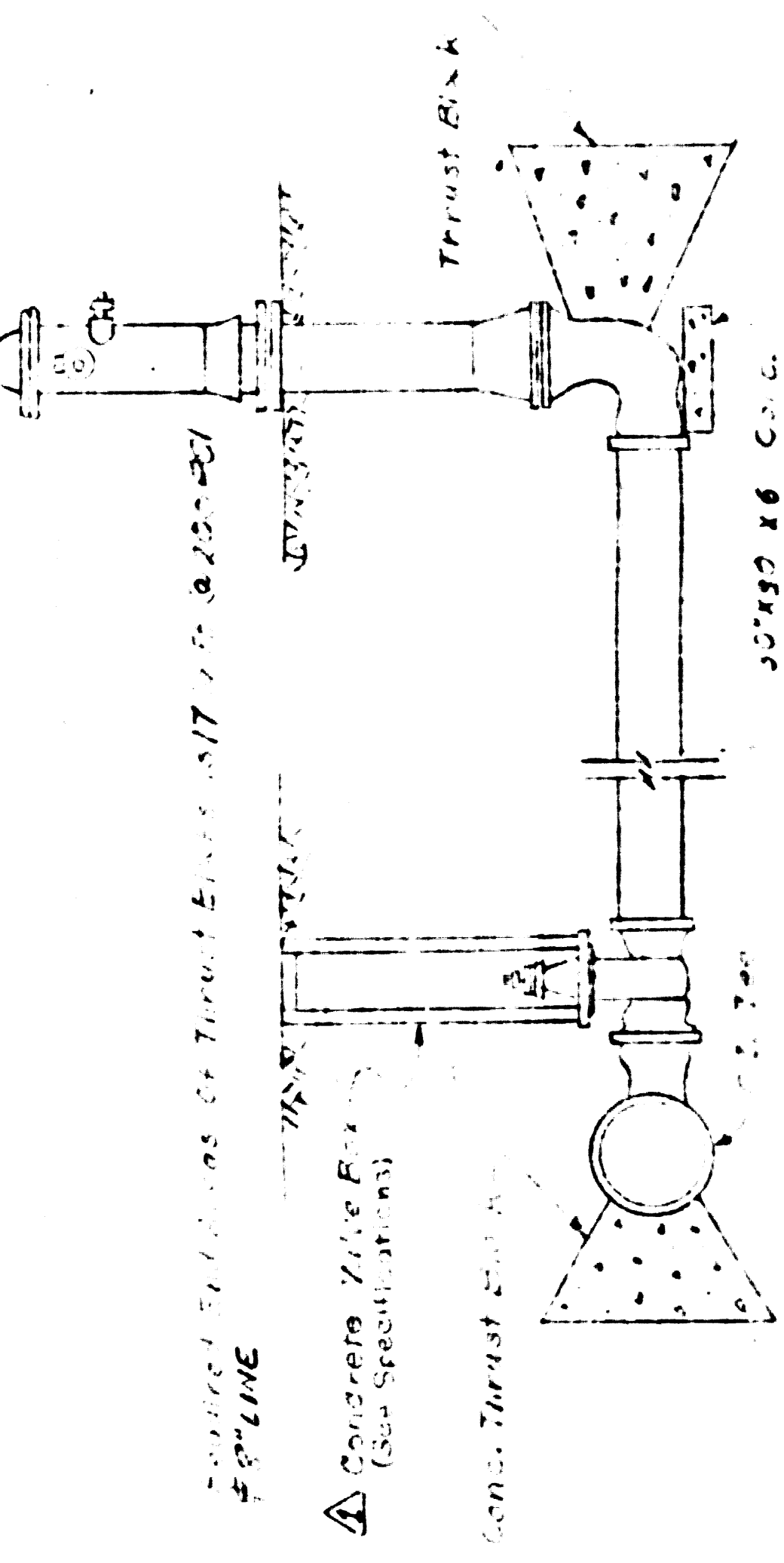
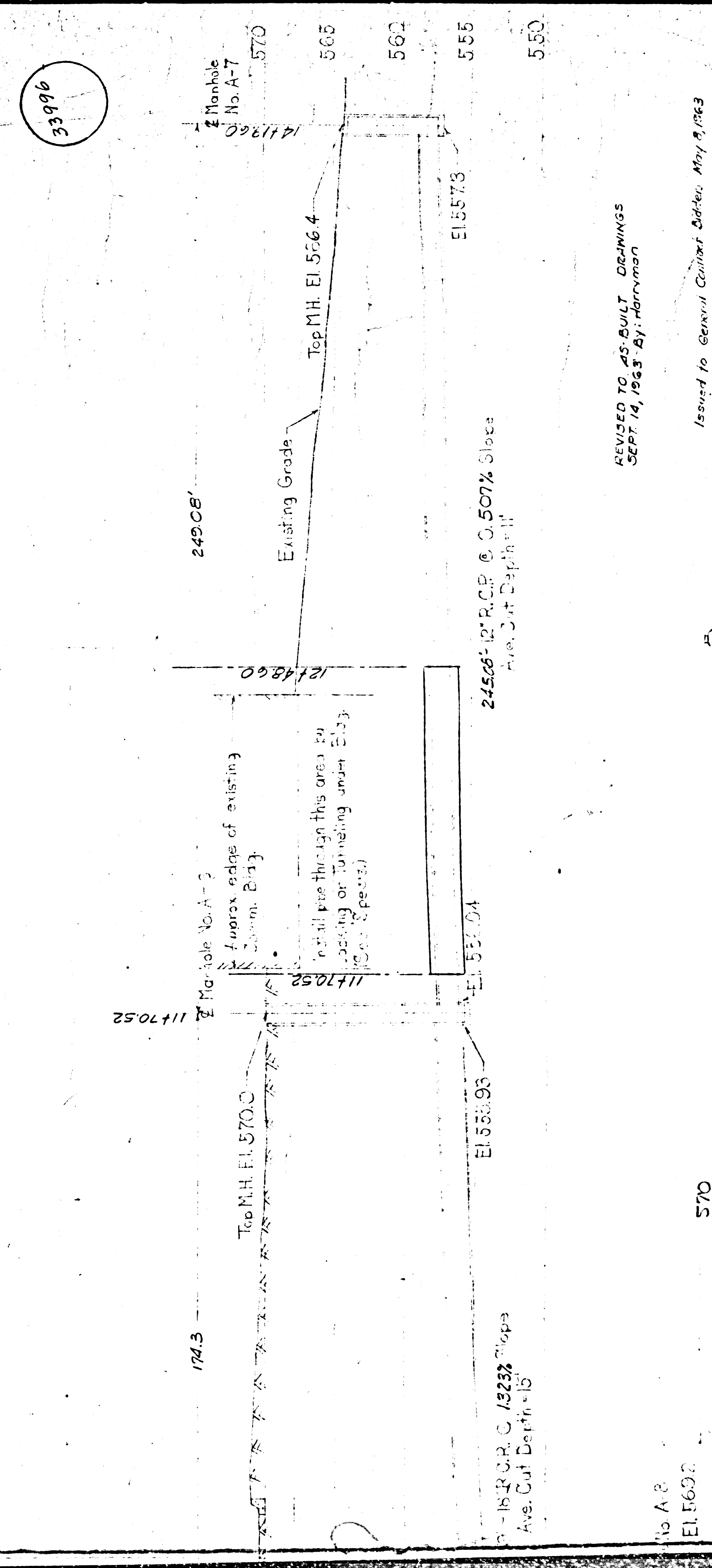
VERTICAL PROFILE OF (RELOC.) LINE "B"

Scale: Vert. 1" = 5'
Horiz. 1" = 10'

REVISIONS

1. Deleted man drawing & profile
2. Deleted man drawing & profile
3. Deleted man drawing & profile
4. Deleted man drawing & profile
5. Deleted man drawing & profile
6. Deleted man drawing & profile
7. Deleted man drawing & profile
8. Deleted man drawing & profile
9. Deleted man drawing & profile
10. Deleted man drawing & profile

April, 1963
In Deleted of Draw Manholes and
Manholes with Cover, Standard
Manholes on Line C San Jan
(a) Covering from Line Grade on
Line C San Jan.



TYPICAL PIPE HYDRAULIC CONNECTION
N.T.S.

UTILITIES, EARTHWORK & PILING
FOR
UNIVERSAL CITY PLAZA
UNIVERSAL CITY PHASE I CALIFORNIA
SKIDMORE, OWINGS & MERRILL
ARCHITECTS
ONE BUSH STREET
SAN FRANCISCO

UTILITIES RELOCATION PC.6532
SANITARY SEWER & STORM DRAIN PROFILES

| | | |
|------------------------------|------------------------|------------------------|
| APPROVED FOR THE OWNER | DRAWN BY: | CHECKED BY: |
| BY: <i>G. G. [Signature]</i> | BY: <i>[Signature]</i> | BY: <i>[Signature]</i> |
| APPROVED FOR THE ARCHITECTS | JOB NO. | DATE |
| BY: <i>[Signature]</i> | 15314-02 | Feb. 26, 63 |

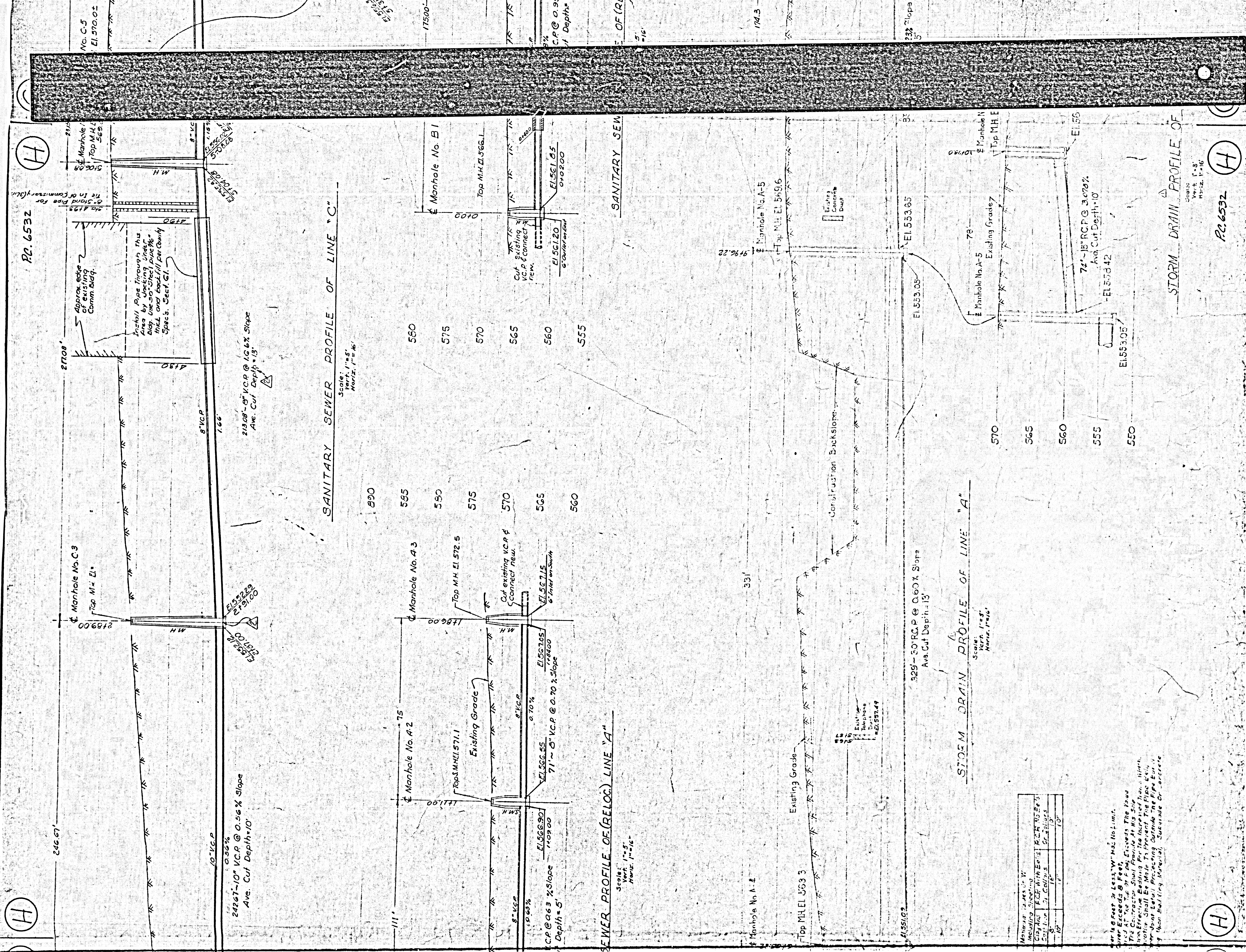
0:3

REVISED TO AS-BUILT DRAWINGS
SEPT. 14, 1963 BY: Harrison

Issued to General Contract Office, May 9, 1963

(G)

(G)



(H)

(H)

(H)

PR. 6532

SANITARY SEWER PROFILE OF LINE "C"

Scale: Vert. 1"=5'
Horiz. 1"=40'

SEWER PROFILE OF (RELOC.) LINE "A"

Scale: Vert. 1"=5'
Horiz. 1"=40'

STORM DRAIN PROFILE OF LINE "A"

Scale: Vert. 1"=5'
Horiz. 1"=40'

STORM DRAIN PROFILE OF

Scale: Vert. 1"=5'
Horiz. 1"=16'

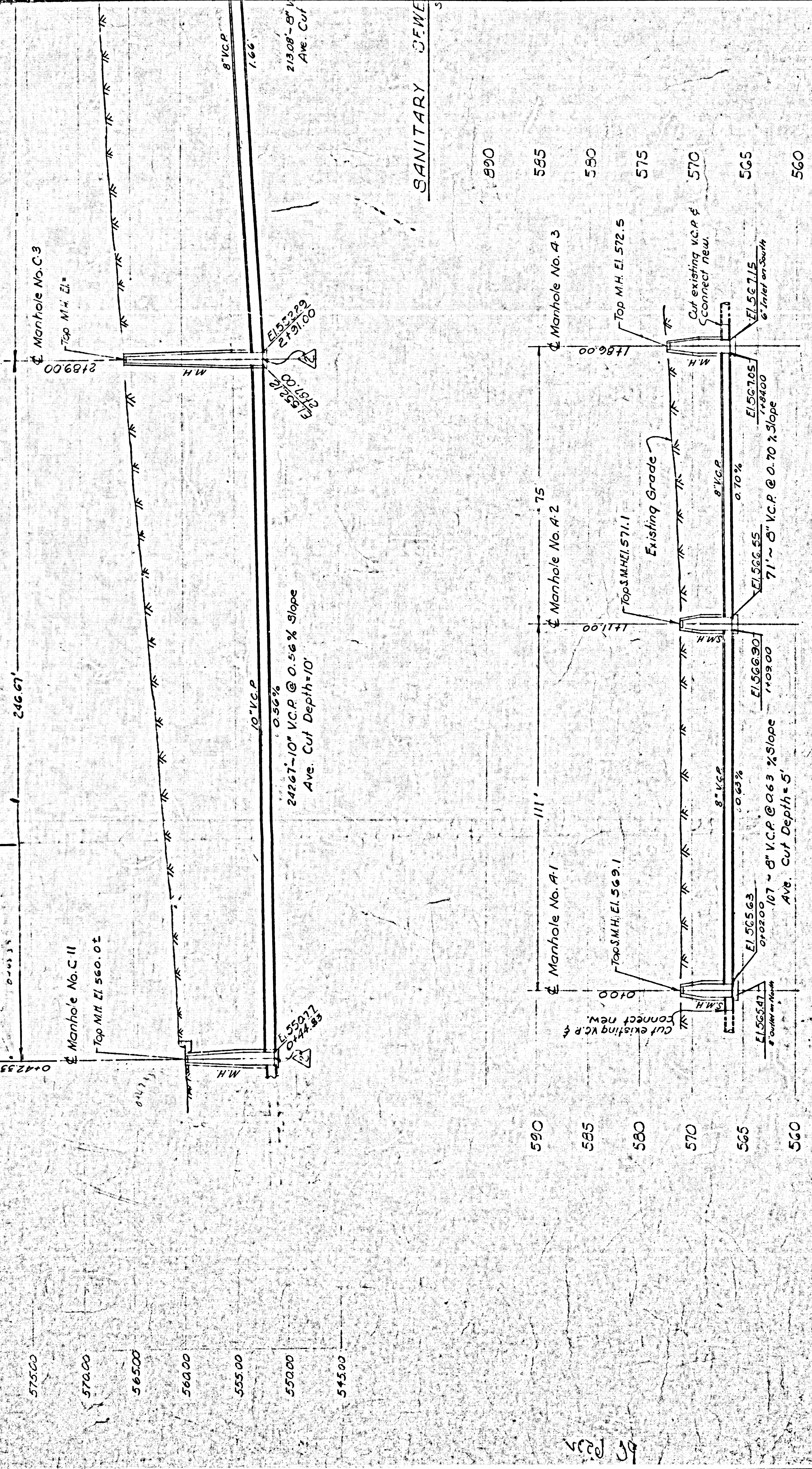
PR. 6532

| Material | Quantity | Remarks |
|------------|----------|---------|
| 10" V.C.P. | 10' | |
| 8" V.C.P. | 10' | |
| 7" V.C.P. | 10' | |
| 6" V.C.P. | 10' | |
| 5" V.C.P. | 10' | |

Notes:
1. All pipe shall be laid on a minimum of 4" of bedding.
2. All pipe shall be laid on a minimum of 6" of bedding.
3. All pipe shall be laid on a minimum of 8" of bedding.
4. All pipe shall be laid on a minimum of 10" of bedding.
5. All pipe shall be laid on a minimum of 12" of bedding.
6. All pipe shall be laid on a minimum of 14" of bedding.
7. All pipe shall be laid on a minimum of 16" of bedding.
8. All pipe shall be laid on a minimum of 18" of bedding.
9. All pipe shall be laid on a minimum of 20" of bedding.
10. All pipe shall be laid on a minimum of 22" of bedding.
11. All pipe shall be laid on a minimum of 24" of bedding.
12. All pipe shall be laid on a minimum of 26" of bedding.
13. All pipe shall be laid on a minimum of 28" of bedding.
14. All pipe shall be laid on a minimum of 30" of bedding.
15. All pipe shall be laid on a minimum of 32" of bedding.
16. All pipe shall be laid on a minimum of 34" of bedding.
17. All pipe shall be laid on a minimum of 36" of bedding.
18. All pipe shall be laid on a minimum of 38" of bedding.
19. All pipe shall be laid on a minimum of 40" of bedding.
20. All pipe shall be laid on a minimum of 42" of bedding.
21. All pipe shall be laid on a minimum of 44" of bedding.
22. All pipe shall be laid on a minimum of 46" of bedding.
23. All pipe shall be laid on a minimum of 48" of bedding.
24. All pipe shall be laid on a minimum of 50" of bedding.
25. All pipe shall be laid on a minimum of 52" of bedding.
26. All pipe shall be laid on a minimum of 54" of bedding.
27. All pipe shall be laid on a minimum of 56" of bedding.
28. All pipe shall be laid on a minimum of 58" of bedding.
29. All pipe shall be laid on a minimum of 60" of bedding.
30. All pipe shall be laid on a minimum of 62" of bedding.
31. All pipe shall be laid on a minimum of 64" of bedding.
32. All pipe shall be laid on a minimum of 66" of bedding.
33. All pipe shall be laid on a minimum of 68" of bedding.
34. All pipe shall be laid on a minimum of 70" of bedding.
35. All pipe shall be laid on a minimum of 72" of bedding.
36. All pipe shall be laid on a minimum of 74" of bedding.
37. All pipe shall be laid on a minimum of 76" of bedding.
38. All pipe shall be laid on a minimum of 78" of bedding.
39. All pipe shall be laid on a minimum of 80" of bedding.
40. All pipe shall be laid on a minimum of 82" of bedding.
41. All pipe shall be laid on a minimum of 84" of bedding.
42. All pipe shall be laid on a minimum of 86" of bedding.
43. All pipe shall be laid on a minimum of 88" of bedding.
44. All pipe shall be laid on a minimum of 90" of bedding.
45. All pipe shall be laid on a minimum of 92" of bedding.
46. All pipe shall be laid on a minimum of 94" of bedding.
47. All pipe shall be laid on a minimum of 96" of bedding.
48. All pipe shall be laid on a minimum of 98" of bedding.
49. All pipe shall be laid on a minimum of 100" of bedding.

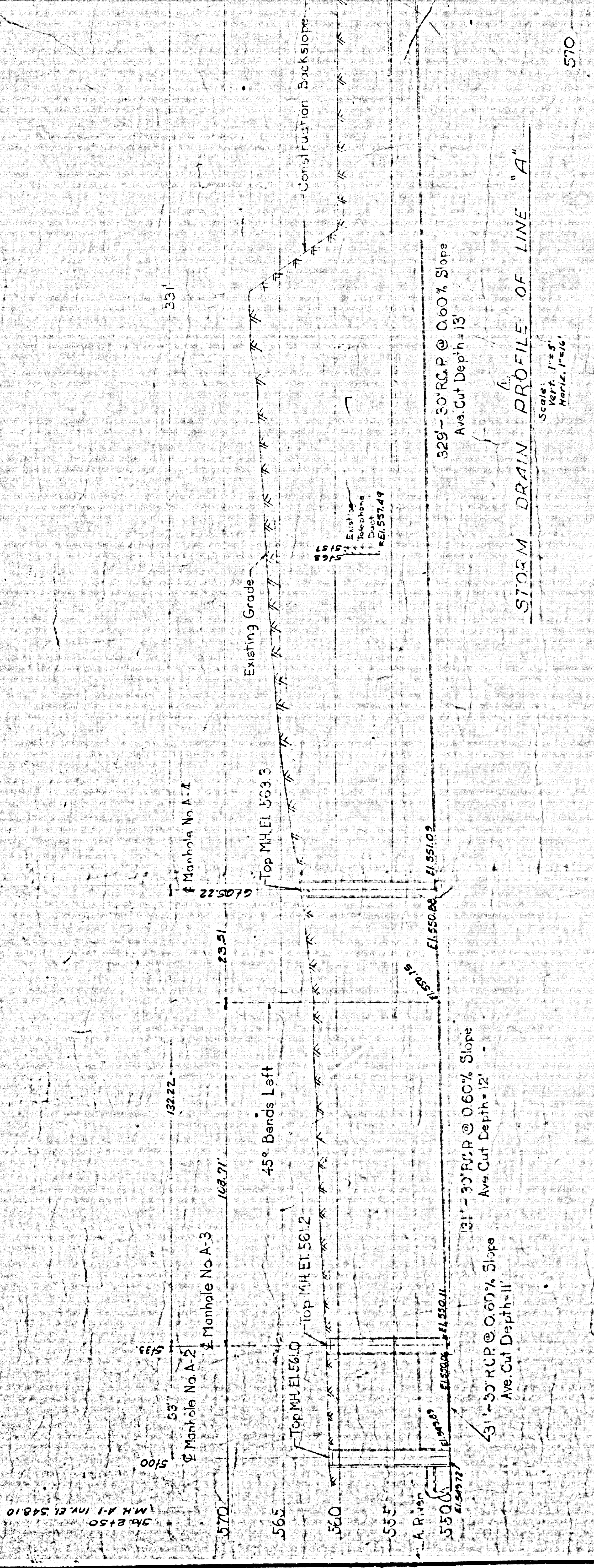
PC 6532 I H

SEE SHEET 1
PC Continuation
0+00 to 0+25
0+25 to 0+50
0+50 to 0+75
0+75 to 0+100
0+100 to 0+125
0+125 to 0+150
0+150 to 0+175
0+175 to 0+200
0+200 to 0+225
0+225 to 0+250



SANITARY SEWER PROFILE OF (RELOC.) LINE "A"

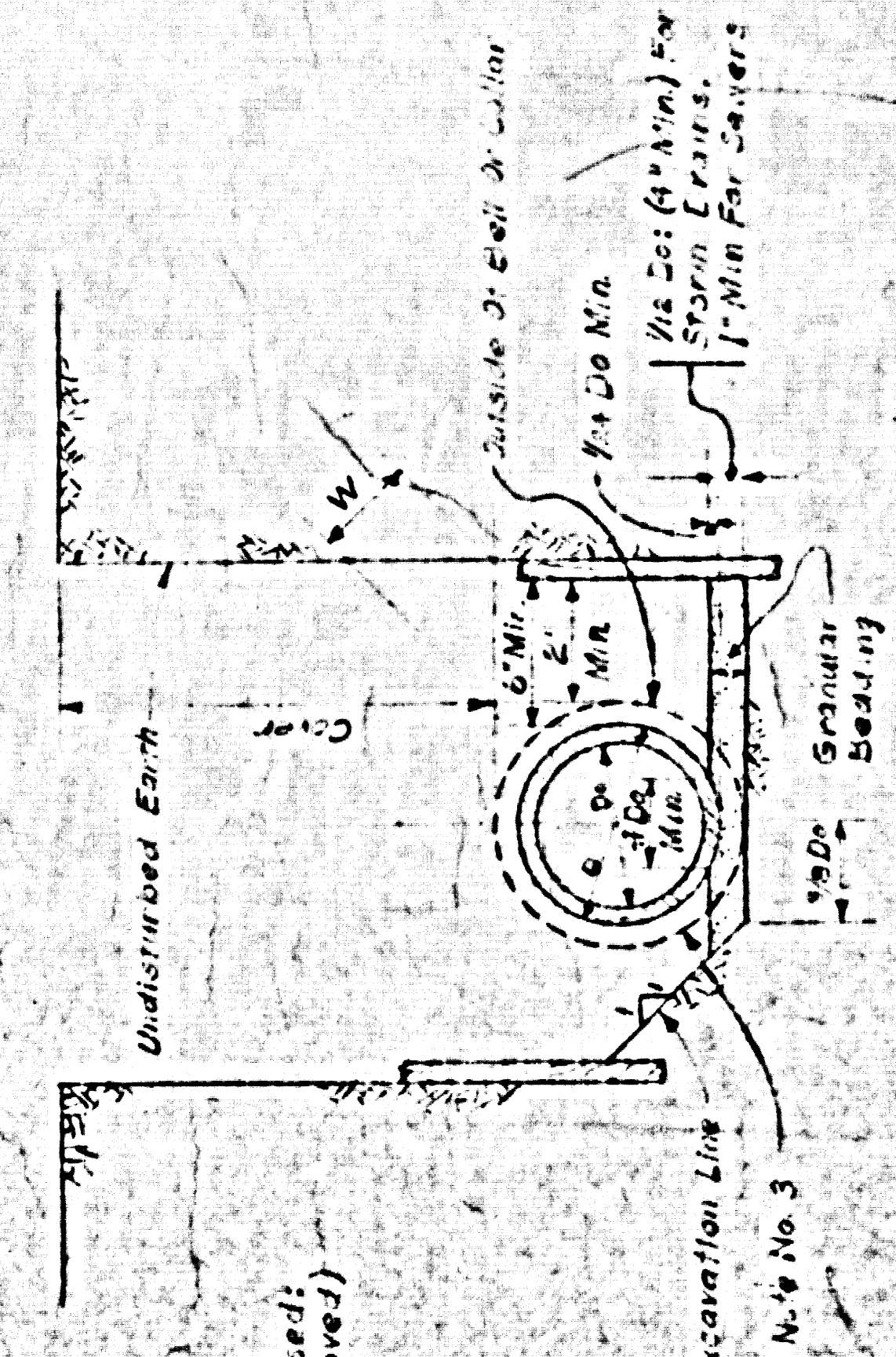
Scale: Vert. 1"=5'
Horiz. 1"=10'



| Item | Quantity | Unit | Notes |
|-----------------|----------|-------------|-------|
| Manhole No. A-1 | 1 | Each | |
| Manhole No. A-2 | 1 | Each | |
| Manhole No. A-3 | 1 | Each | |
| 8" V.C.P. | 107.13 | Linear Feet | |
| 8" R.C.P. | 71.13 | Linear Feet | |
| 8" R.C.P. | 8.00 | Linear Feet | |
| 10" V.C.P. | 24267.10 | Linear Feet | |
| 30" R.C.P. | 329.30 | Linear Feet | |

NOTES

- Where the cover is 8 feet or less, it shall have no limit.
- Where the cover exceeds 8 feet, it shall have a minimum depth of 10 feet.
- The contractor shall provide a minimum 12" clearance around the pipe for bedding.
- Where the cover is 8 feet or less, it shall have no limit.
- Where the cover exceeds 8 feet, it shall have a minimum depth of 10 feet.
- The contractor shall provide a minimum 12" clearance around the pipe for bedding.
- Where the cover is 8 feet or less, it shall have no limit.
- Where the cover exceeds 8 feet, it shall have a minimum depth of 10 feet.
- The contractor shall provide a minimum 12" clearance around the pipe for bedding.



PIPE LAYING IN TRENCHES

Standard Plan B-3087 City of Los Angeles
N.T.S.

PC 6532 I H