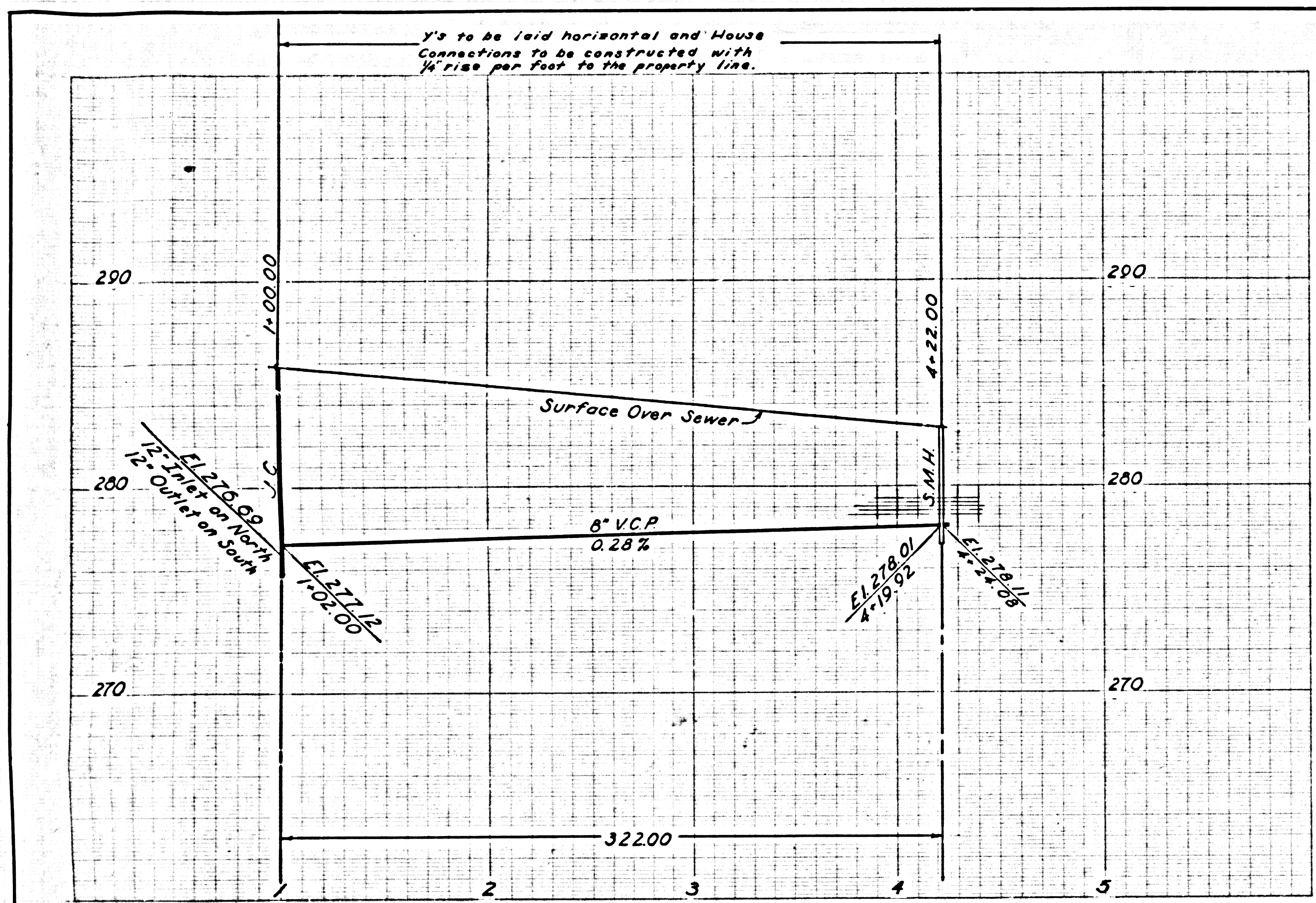


SHEET 101

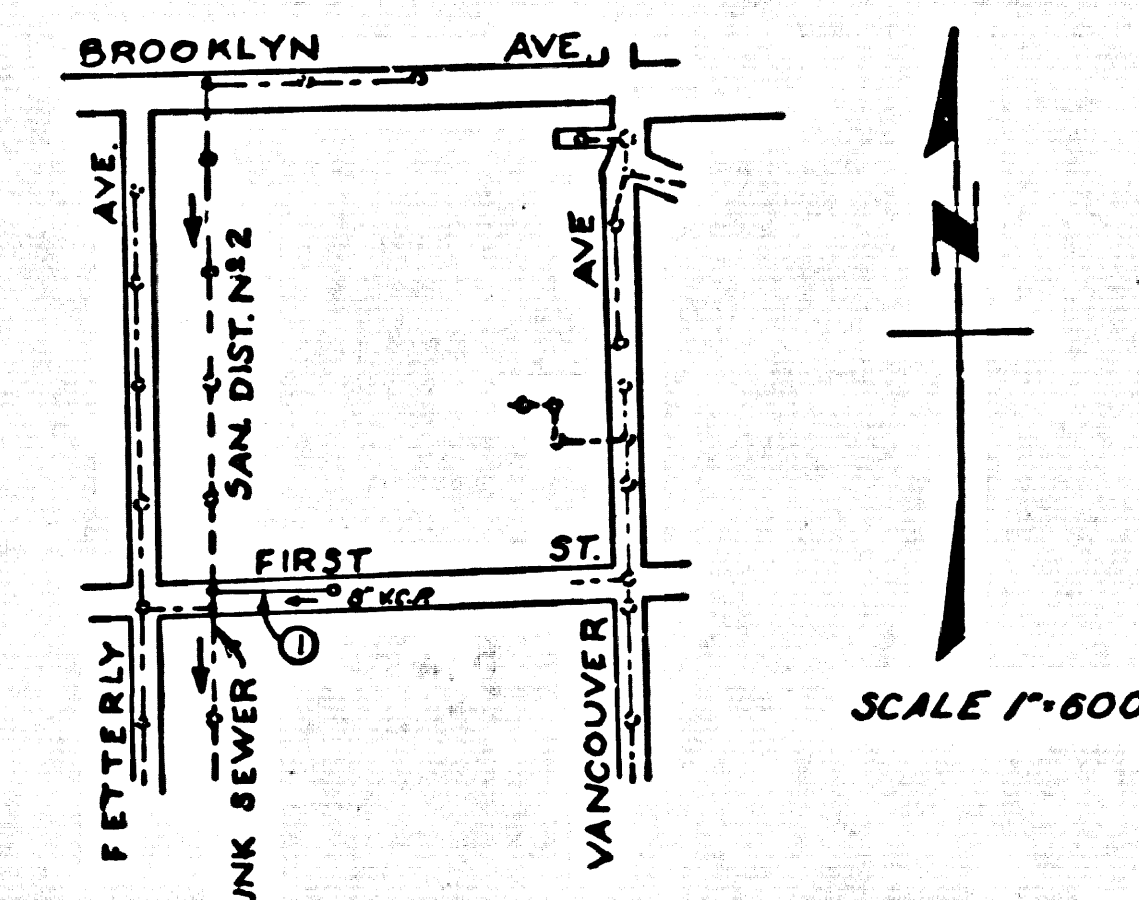
BETNEDEVE PARK TREE SERVICE YARD

WALKER AVENUE

CITY OF LOS ANGELES



B.M. No. S-6 Elev 200.61
County Surveyor's Monument Point on
South edge of cap. F.B. 078-140, 153, 159



INDEX MAP
P.C. 6536
CAP. PROJ. No. 8776
W.S. 36 A-2

PRIVATE CONTRACT No. 6536
EAST L.A. BLDG. DIST. No. 6
W. S. 36

Notes
Elevations are in feet above U.S.C. & G.S. Sea Level Datum of 1929.
This Drawing and the data hereon are hereby made a part of the specifications.
Work shall be constructed according to specifications on file in the office of the County Engineer and shall be processed only in the presence of the County Engineer.
Before work can be started, the contractor must obtain a permit to excavate in County streets from the L. A. County Road Department.

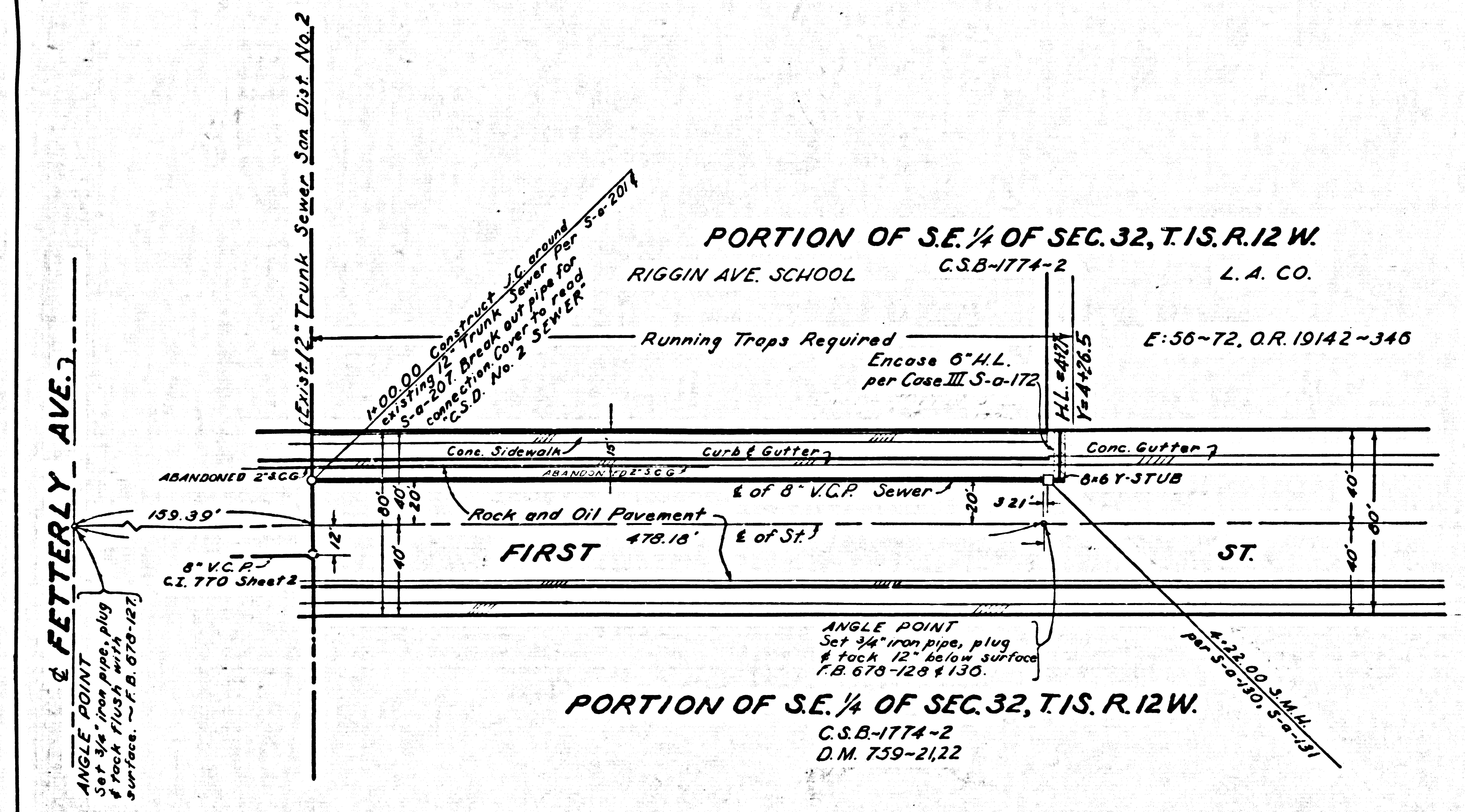
34098

If work is to be done in a state highway, a permit must be obtained from the state of California, Division of Highways, 120 South Spring Street.
Approval of this plan by the County of Los Angeles does not constitute a representation as to the Accuracy of the location of, or the existence or non-existence of, any underground utility, pipe, or structure within the limits of this project.

- Use standard manhole frames and covers, S-117, except as noted.
- Use extra strength pipe. All pipe standard depth.
- For legend see Plan S-a-64
- Resurface all trench within paved area with premium rock and oil three inches in thickness on a four-inch base.
- Encase four feet of sewer at points of interference with poles as per S-a-119.
- All structures shall be brick sewer structures S-104, except as noted.
- For allowable leakage test use Formula No. 2, Spec's, Sec. 54.
- Use manhole compression joints for all V.C.P. per specifications, Sections 36, 48 and 49.
- The contractor shall notify the Construction Division by telephone Madison 0-4747 Ext. 81551 at least 24 hours before starting any work under this contract.
- Los Angeles County Standard Specifications for the Construction of Sanitary Sewers dated May 25, 1962 apply in the construction of this project.
- Grades to which the sewer is to be constructed are shown on this plan's profile. At all points the grade shall be established so as to conform to a straight line between the established end points.
- Tops of sewer structures shall be adjusted to finished grade.
- All state and local trench safety orders will be rigidly enforced.
- Construction of sewer shall comply with the following County Engineer's Standard Plans: S-a-102, S-a-171, S-a-172, S-a-179 S-a-180, S-a-190, S-a-191.

NO INSTRUCTIONS FOR THE DISPOSAL OF INDUSTRIAL WASTES SHALL BE MADE TO SEWERS SHOWN ON THESE DRAWINGS WITHOUT WRITTEN PERMISSION FROM THE CHIEF ENGINEER AND GENERAL MANAGER OF THE COUNTY SANITATION DISTRICT.

BEFORE BREAKING INTO ANY EXISTING STRUCTURE AND BEFORE FINAL ACCEPTANCE OF THIS WORK, COUNTY SANITATION DISTRICT (D.U.# 1281) SHALL BE NOTIFIED IN ORDER THAT REQUIRED INSPECTION CAN BE MADE.



SCALES:
HORIZ. 1"=40'
VERT. 1"=4'

APPROVED John D. Parkhurst CHIEF ENGINEER OF COUNTY SANITATION DISTRICT No. 2 BY: [Signature] OFFICE ENGINEER	DEPARTMENT OF COUNTY ENGINEER SANITATION DIVISION COUNTY OF LOS ANGELES	DATE April 1963 DESIGNED BY Felling TRACED BY Koppecky CHECKED BY Mc Miller	SANITARY SEWER TO SERVE BELVEDERE PARK TREE SERVICE YARD & BUILDING	SPEC. NO. WORK ORDER 8776-28 CAPITAL PROJ. 8776 SHEET NO. SAN-1
	RECOMMENDED [Signature] ASSISTANT ENGINEER	PRIVATE CONTRACT 6536 SCALE AS SHOWN		