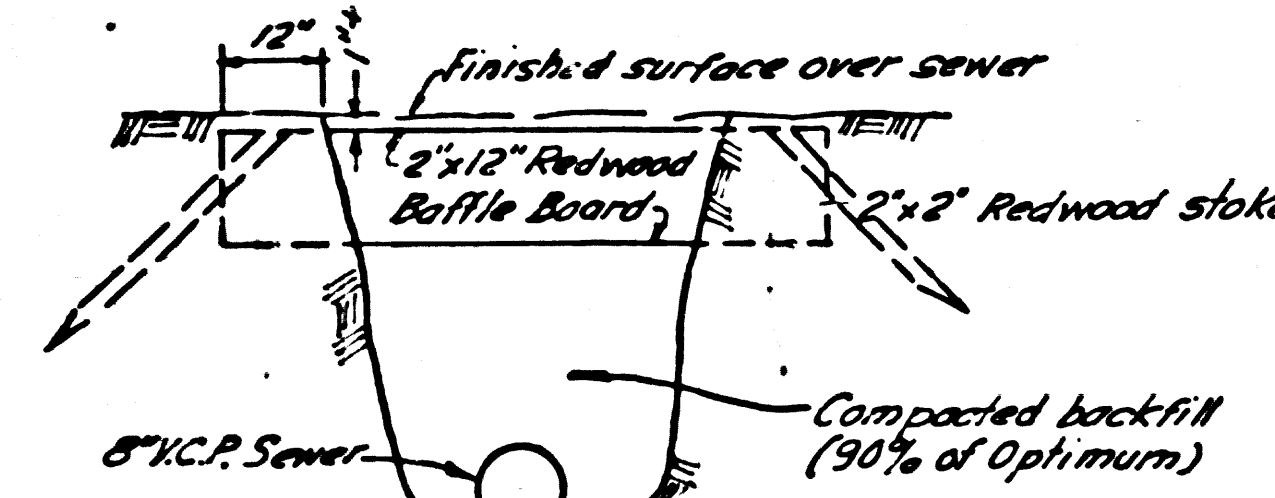


B.M. 56.1717 ELEV. 635.512
 Found 3/4" I.P. 12" down, 5700' Easterly,
 99' 74" Southerly Inters. Horizontal
 2' x 4" Lullweiser Rod. I.R.S. to S.C.
 @ Sta. 186+20, 1955 Adjustment.
 OTTERBEIN QUAD. 1955

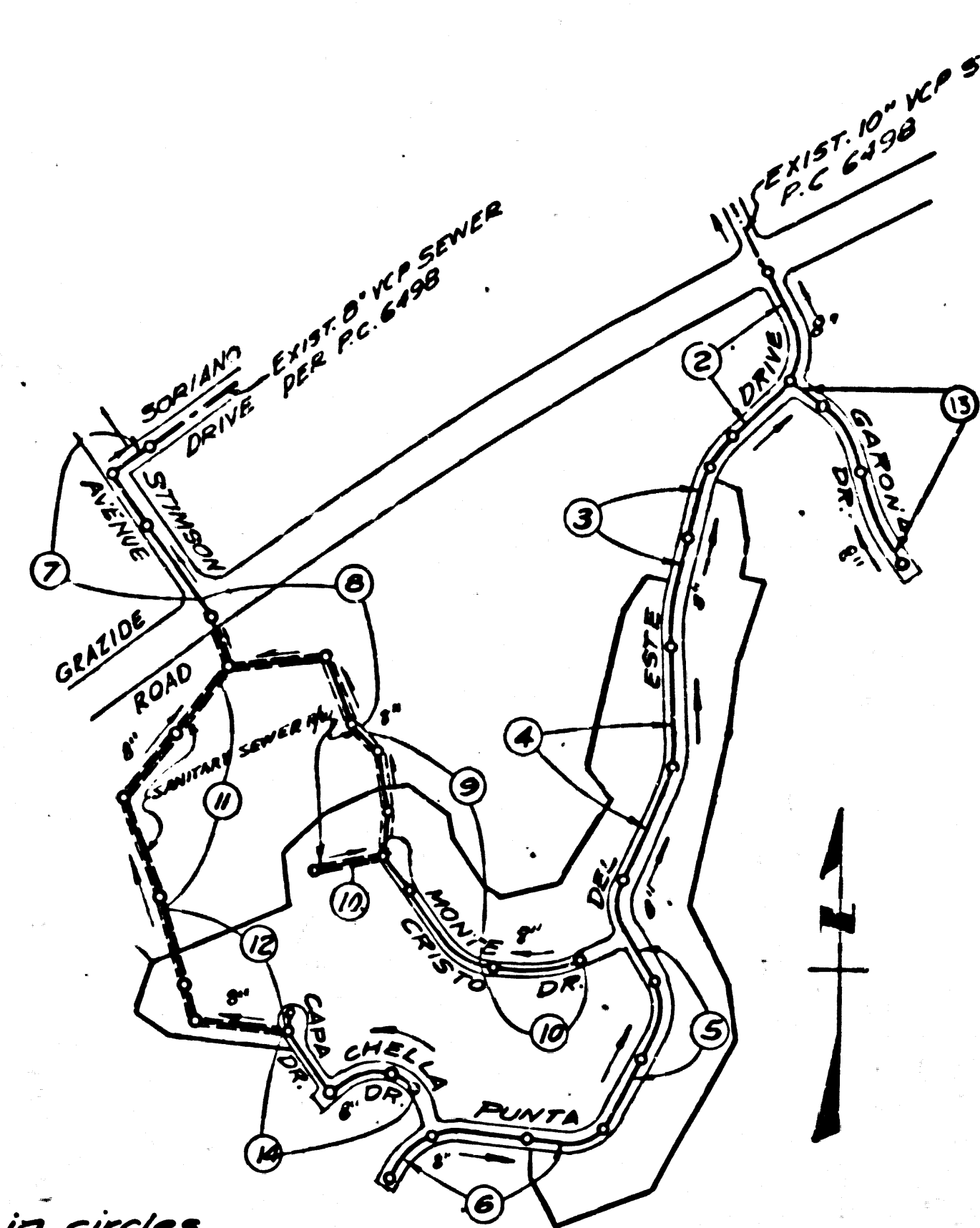
REVISION:
 8" V.C.P. Sewer was lowered
 between STA. 5+25.87 & STA.
 8+61.35 to 5'0" course case-
 on Page 11.
 Approved Office of County Eng. date



BAFFLE BOARD DETAIL
 NO SCALE

- NOTES:**
- Each end of baffle board will extend one foot into undisturbed ground.
 - The upper layer of backfill to be one foot minimum of topsoil. Topsoil shall be tamped in place and planted with ivy or ice plant and adequately watered until growth is restored.
 - Baffle boards shall be spaced so that the top of the lower board shall be level with the bottom of the next higher board.

DETAIL 'A'



INDEX MAP
 TRACT NO. 27818
 P.C. 6555
 Scale 1" = 600'

NOTE:
 Figures in circles denote page numbers.

DOUBLE SCALE
LA PUENTE BLDG. DIST. NO. 2

PROFILE ALIGNMENT AND GRADE OF
SANITARY SEWERS P.C. 6555
 PAGE 1

TRACT NO. 27818 (34789)
AND OTHER RIGHTS OF WAY
PRIVATE CONTRACT NO. 6555

W.S. 38
 7 SHEETS, 14 PAGES

SCALE: VERT. 1" = 5'
 HORIZ. 1" = 40' April, 1963

PREPARED IN THE OFFICES OF
AMCO ENGINEERS
 8844 W. OLYMPIC BLVD. S.W.

By: *[Signature]* 4-10-63
 GEO. ARALDO REG. C. E. NO. 11857

FOR LEGEND SEE PLAN NO. S-6-64

- NOTES:**
- PROVIDE STAKES ON THE PROPERTY LINE OR PROPERTY LINES PRODUCED AT RIGHT ANGLES TO THE SEWER LINE AT THE CENTER LINE OF EACH MANHOLE.
 - NO REPRESENTATIVE OF THE COUNTY ENGINEER WILL SURVEY OR LAY OUT ANY PORTION OF THE WORK.
 - THE PRIVATE ENGINEER SHALL FURNISH THE COUNTY ENGINEER WITH GRADE SHEETS AND STATIONING FOR ALL HOUSE LATERALS AND Y BRANCHES AND SHALL PROVIDE STAKES FOR THEM AT THEIR PROPER LOCATIONS WITH STATIONING PLAINLY MARKED. ALL HOUSE LATERALS SHALL BE CONSTRUCTED IN A STRAIGHT ALIGNMENT AT RIGHT ANGLES FROM THE MAIN LINE SEWER EXCEPT AS SHOWN ON THE PLANS. HOUSE LATERALS FROM CHIMNEYS SHALL NOT HAVE AN ANGLE OF LESS THAN 45° WITH THE MAIN LINE SEWER. ANY CHANGE IN ALIGNMENT SHALL BE REQUESTED IN WRITING BY THE PRIVATE ENGINEER.
 - THE PRIVATE ENGINEER SHALL FURNISH THE HOUSE LATERAL DEPTH AT THE PROPERTY LINE BELOW THE TOP OF CURB ELEVATION FOR EACH HOUSE LATERAL ON THE GRADE SHEET.
 - NO REVISIONS SHALL BE MADE IN THESE PLANS WITHOUT THE APPROVAL OF THE COUNTY ENGINEER.
 - THE CONTRACTOR SHALL NOTIFY THE CONSTRUCTION DIVISION BY TELEPHONE, MADISON 9-4747, EXT. 81551, AT LEAST TWENTY-FOUR HOURS BEFORE STARTING ANY WORK UNDER THIS CONTRACT.
 - MANHOLES SHALL BE BRICK SEWER STRUCTURES PER S-6-104. PRECAST CONCRETE MANHOLES PER S-6-123 OR S-6-173 MAY BE USED AS AN ALTERNATE IN LOCATIONS APPROVED BY THE COUNTY ENGINEER.
 - USE STANDARD MANHOLE FRAMES AND COVERS, S-6-117, EXCEPT AS NOTED.
 - MANHOLE TOPS IN UNIMPROVED RIGHTS OF WAY TO BE SIX INCHES ABOVE FINISHED GRADE.
 - USE EXTRA STRENGTH PIPE, ALL PIPE IN STANDARD DEPTH EXCEPT AS NOTED.
 - USE MECHANICAL COMPRESSION JOINTS FOR ALL V.C.P. JOINTS PER SPECS., SECS. 34, 48, 64, 69.
 - WHERE EVER GROUND WATER IS ENCOUNTERED DURING THE CONSTRUCTION OF THE SEWERS, THE V.C.P. JOINTS SHALL BE OF JOINT COMPOUND PER SPECS., SECS. 33 & 48, OR MECHANICAL COMPRESSION JOINTS PER SPECS., SEC. 34.
 - IF A POWER POLE IS WITHIN THREE FEET OF THE SEWER, THE SEWER SHALL BE ENCASED, PER S-6-173, CASE III, TWO FEET ON EITHER SIDE FROM THE POINT OF INTERFERENCE.
 - IF DURING THE COURSE OF CONSTRUCTION IT IS DETERMINED THAT THERE IS LESS THAN FOUR FEET OF COVER OVER THE TOP OF A MAIN LINE OR HOUSE LATERAL V.C.P. SEWER WHICH IS NOT INDICATED ON THE PLANS, THE PIPE SHALL BE ENCASED PER S-6-173, CASE III, UNLESS OTHERWISE APPROVED BY THE COUNTY ENGINEER.
 - HOUSE LATERALS TO BE CONSTRUCTED WITH INVERTS AT PROPERTY LINE ... FEET BELOW CURB GRADE EXCEPT AS NOTED.
 - RESURFACE ALL TRENCHES WITHIN PAVED AREAS TO MEET L.A. COUNTY ROAD DEPT. OR CALIFORNIA STATE HIGHWAY REQUIREMENTS IN ACCORDANCE WITH PERMITS.
 - FOR ALLOWABLE LEAKAGE TEST USE FORMULA NO. 2, SPECS., SEC. 64.
 - STANDARD SPECIFICATIONS DATED MAY 25, 1962 SHALL APPLY IN THE CONSTRUCTION OF THIS PROJECT.
 - "SEWERS IN FILLED GROUND"
 (1) NO CONSTRUCTION WILL BE PERMITTED IN FILLED AREA UNLESS ACCEPTABLE CERTIFICATION IS SUBMITTED TO THE CONSTRUCTION DIVISION OF THE COUNTY ENGINEER REVEALING THAT RELATIVE CONTRACTION IS GREATER THAN 20%.
 (2) IF CONTRACTION IS LESS THAN 20% THE SEWER MUST BE CHASED AS SHOWN IN THE PLANS PER S-6-116 OR A SPECIAL BASE COURSE PER S-6-173 CASE II. SPECIAL MANHOLE BASES MUST BE INSTALLED PER S-6-123 AS INDICATED ON THE PLANS.
 (3) IF CONTRACTION IS GREATER THAN 20% NEITHER CHASING NOR SPECIAL MANHOLE BASES WILL BE REQUIRED.
 - ALL FILL TO BE IN PLACE BEFORE SEWERS ARE CONSTRUCTED.
 - ALL STATE AND LOCAL TRENCH SAFETY ORDERS WILL BE RIGIDLY ENFORCED.

COLLECT CHARGES
AS INDICATED
[Signature] 5-16-63

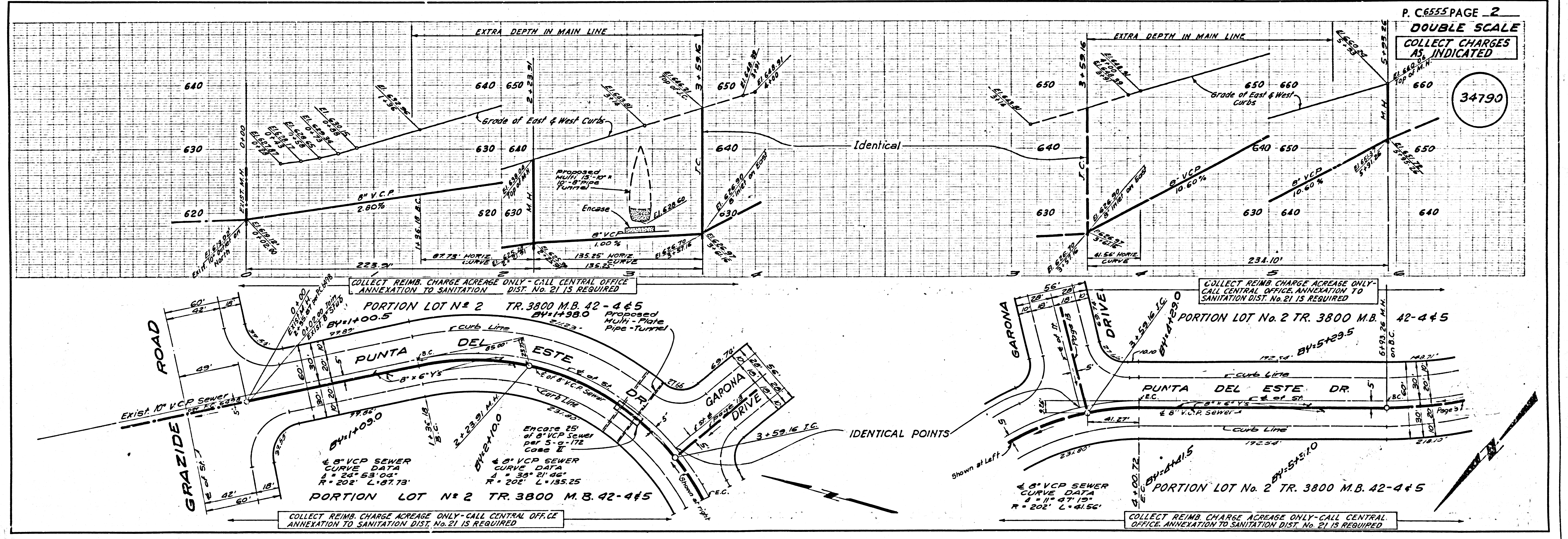
COUNTY OF LOS ANGELES, CALIFORNIA
 JOHN A. LAMBIE, COUNTY ENGINEER
 J. D. PARKURST, CHIEF ENGINEER

APPROVED BY: *[Signature]* ASSISTANT SANITATION ENGINEER
 APPROVED BY: *[Signature]* OFFICE ENGINEER

SUBMITTED BY: *[Signature]* SAN DIMAS
 CHECKED BY: *[Signature]* NO. CE NO. 3406

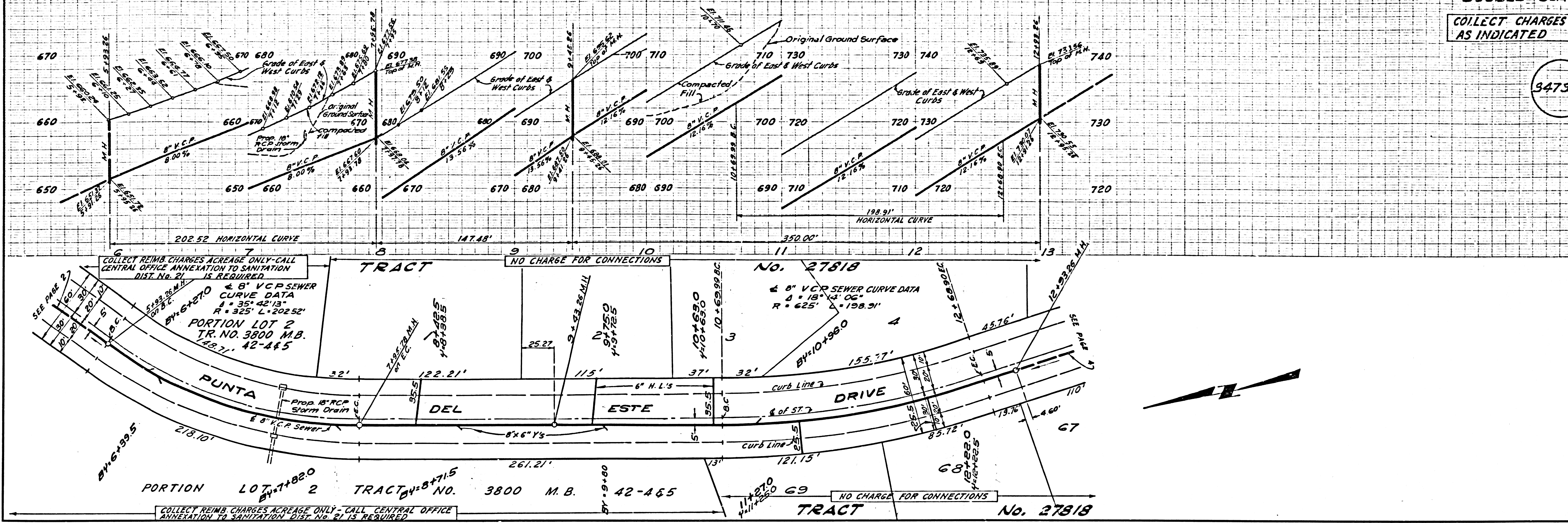
NO CONNECTIONS FOR THE DISPOSAL OF INDUSTRIAL WASTES SHALL BE MADE TO THESE SEWERS WITHOUT WRITTEN PERMISSION OF THE COUNTY ENGINEER AND GENERAL MANAGER OF THE COUNTY SANITATION DISTRICTS.

J. N. 0360.23



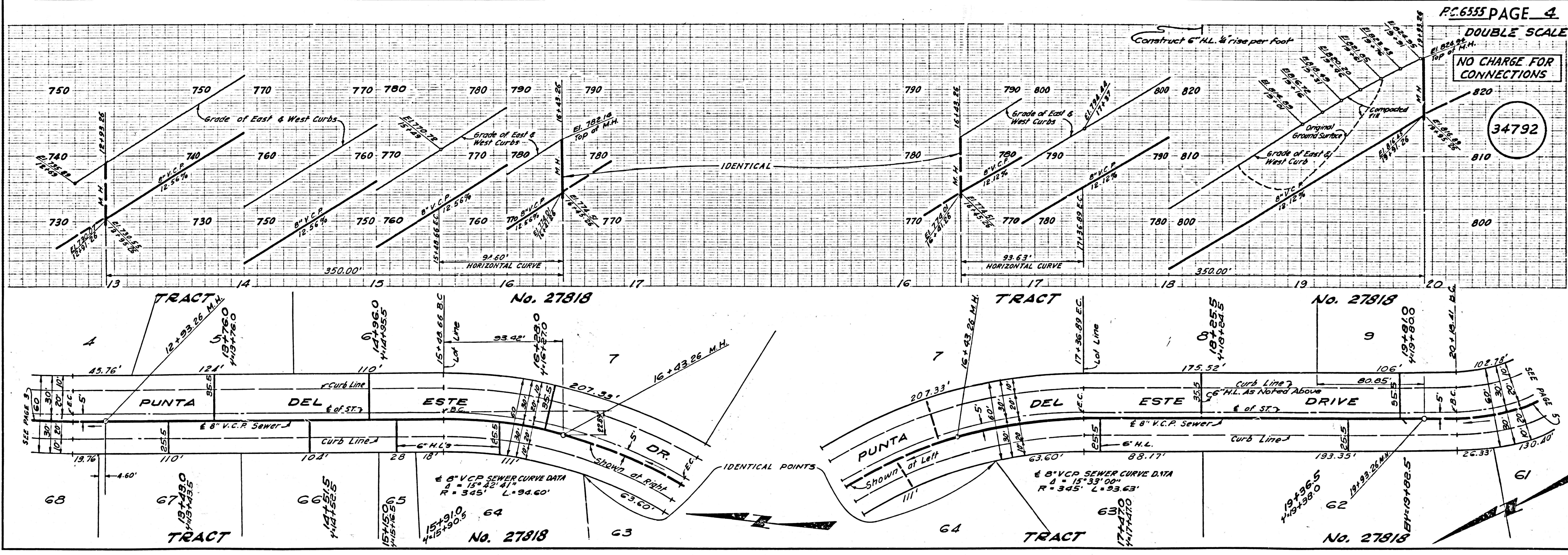
COLLECT CHARGES AS INDICATED

34731



NO CHARGE FOR CONNECTIONS

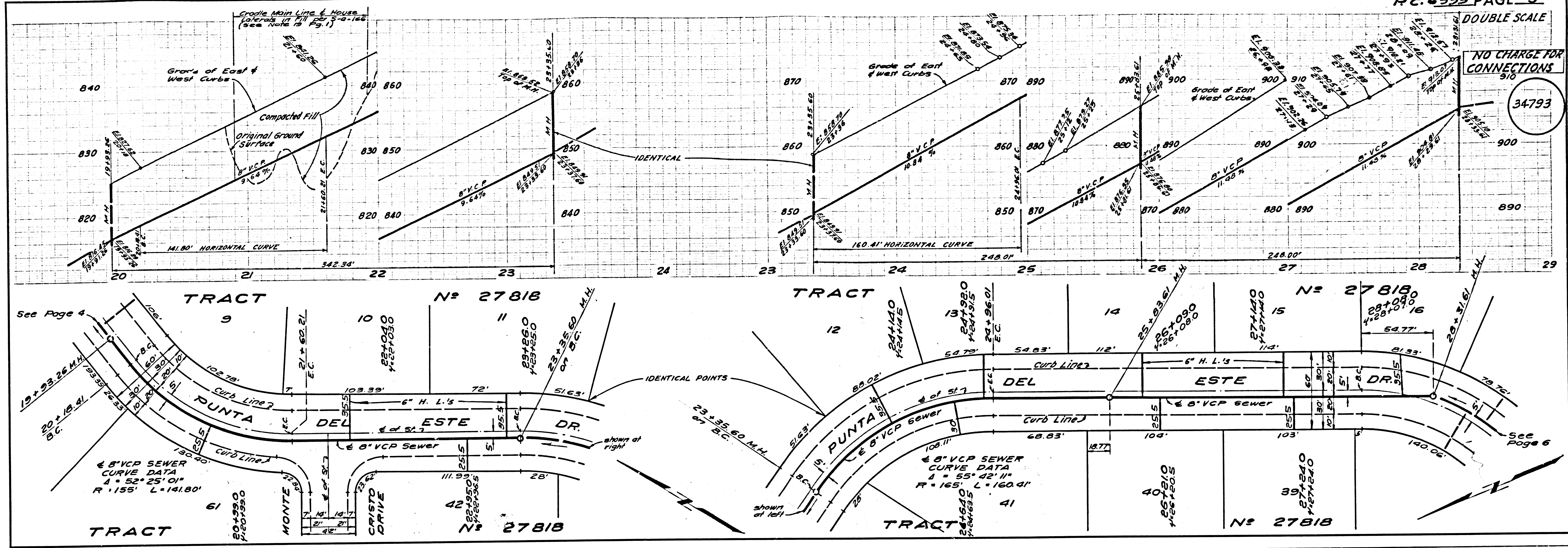
34792



DOUBLE SCALE

NO CHARGE FOR CONNECTIONS

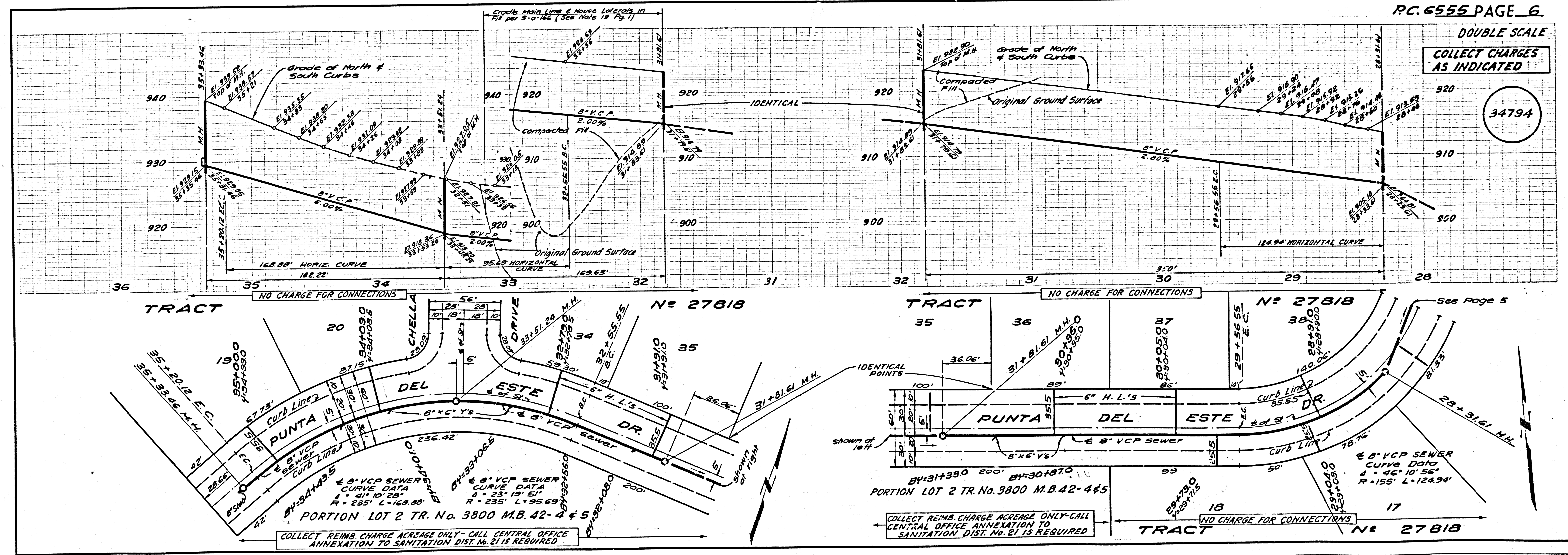
34793



DOUBLE SCALE

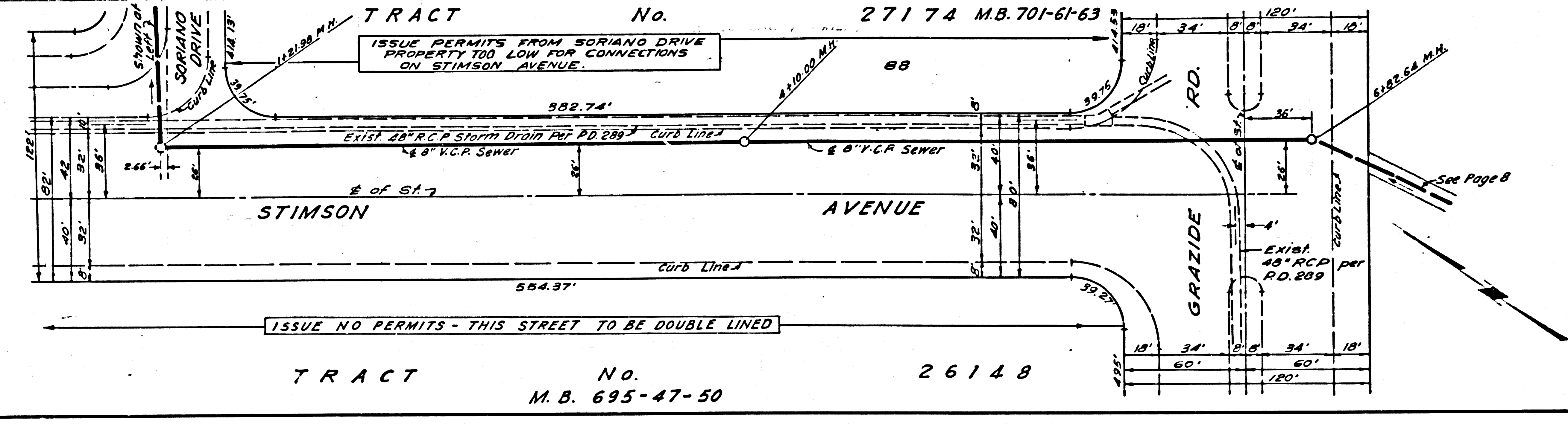
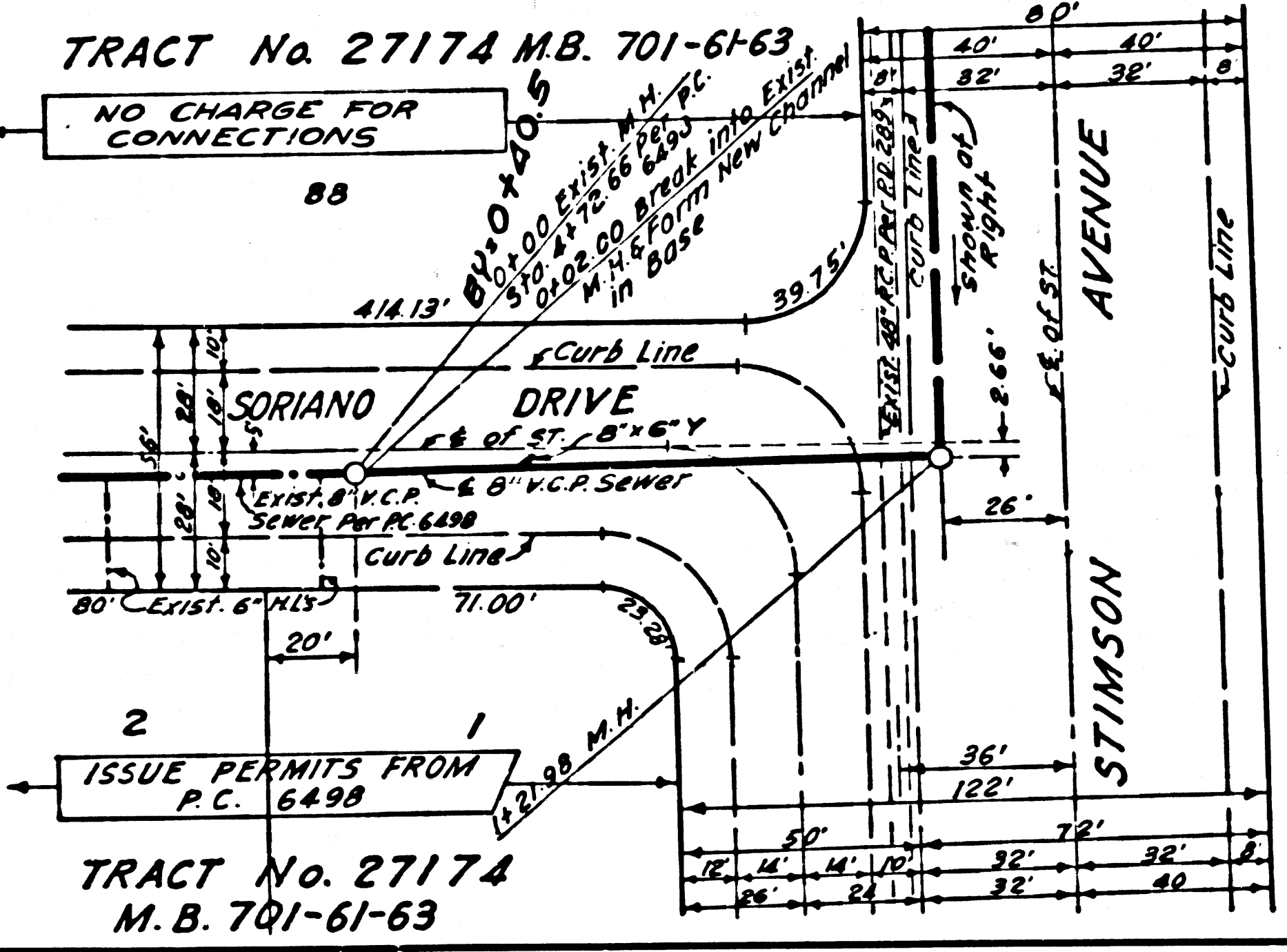
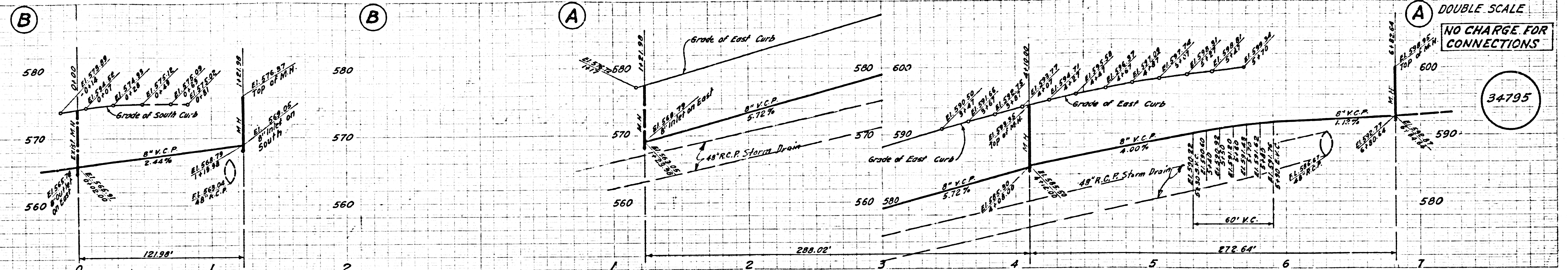
COLLECT CHARGES AS INDICATED

34794



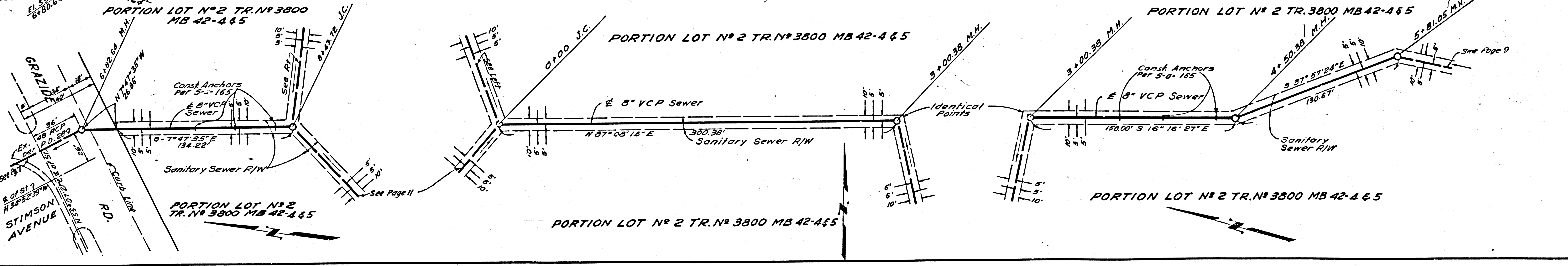
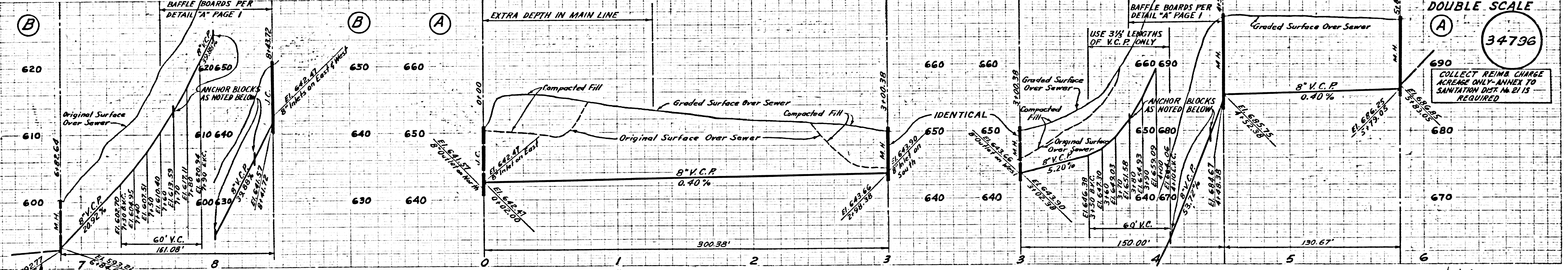
DOUBLE SCALE
NO CHARGE FOR CONNECTIONS

34795



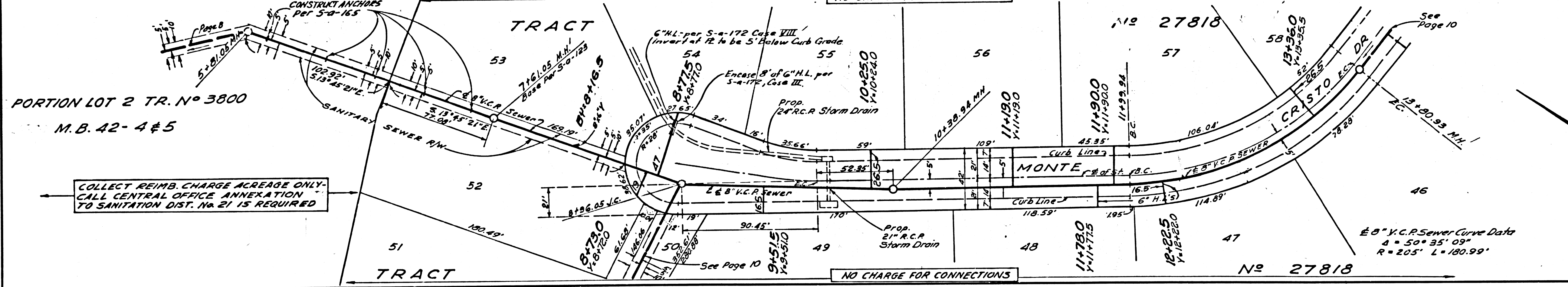
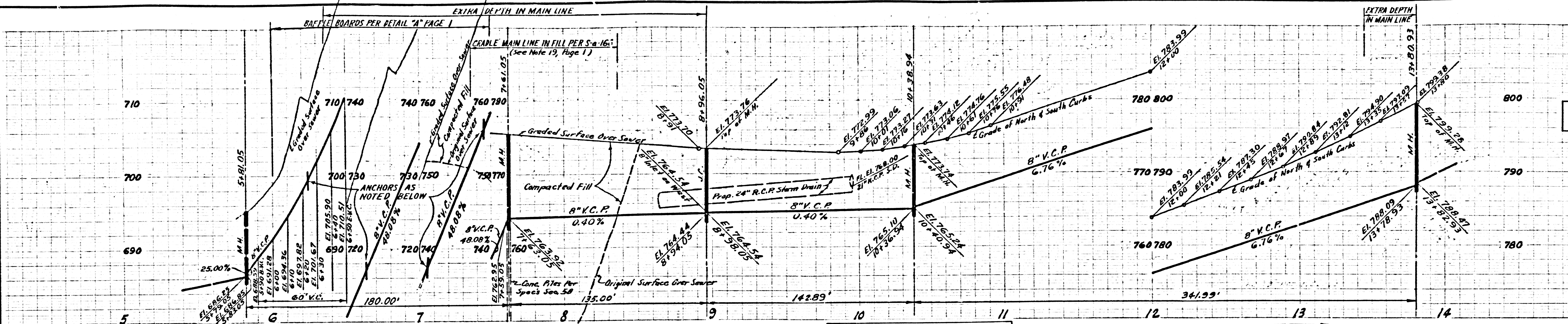
DOUBLE SCALE

34796



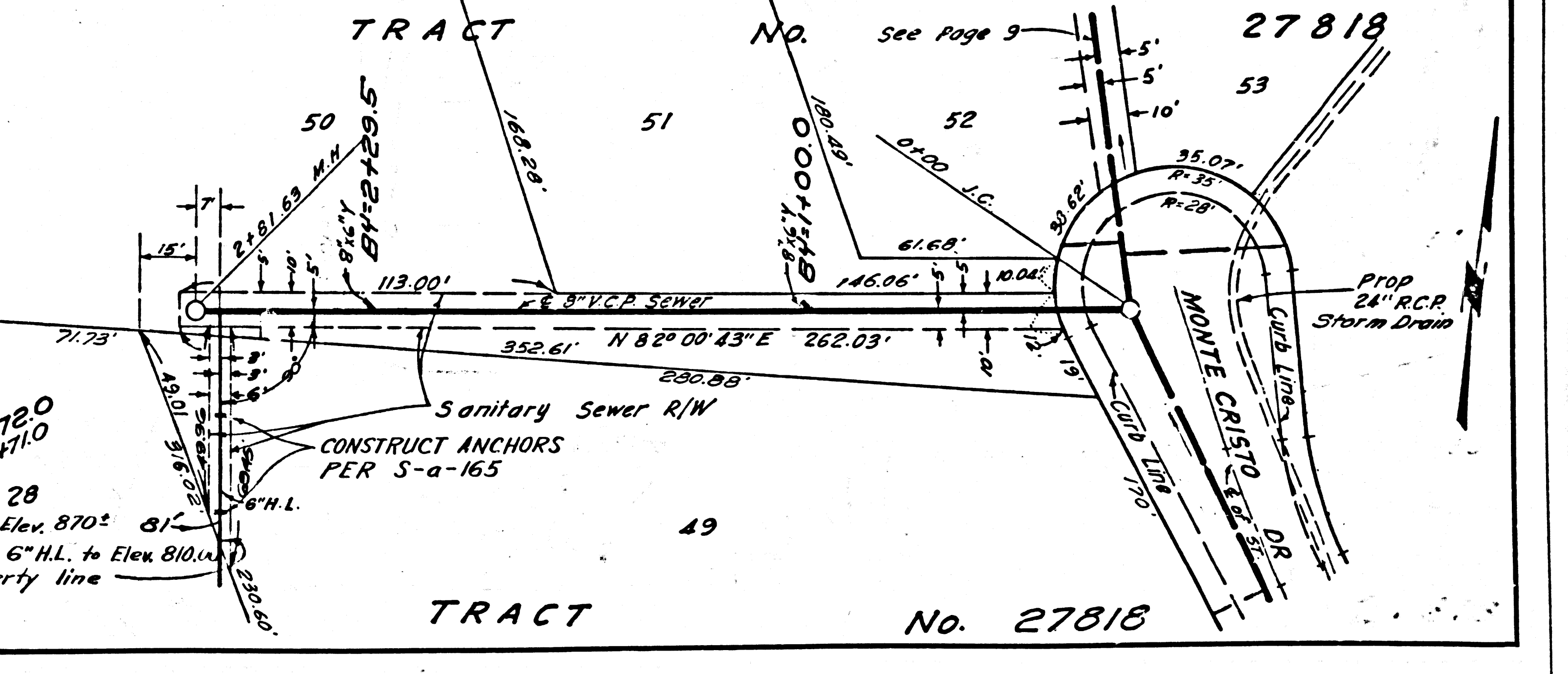
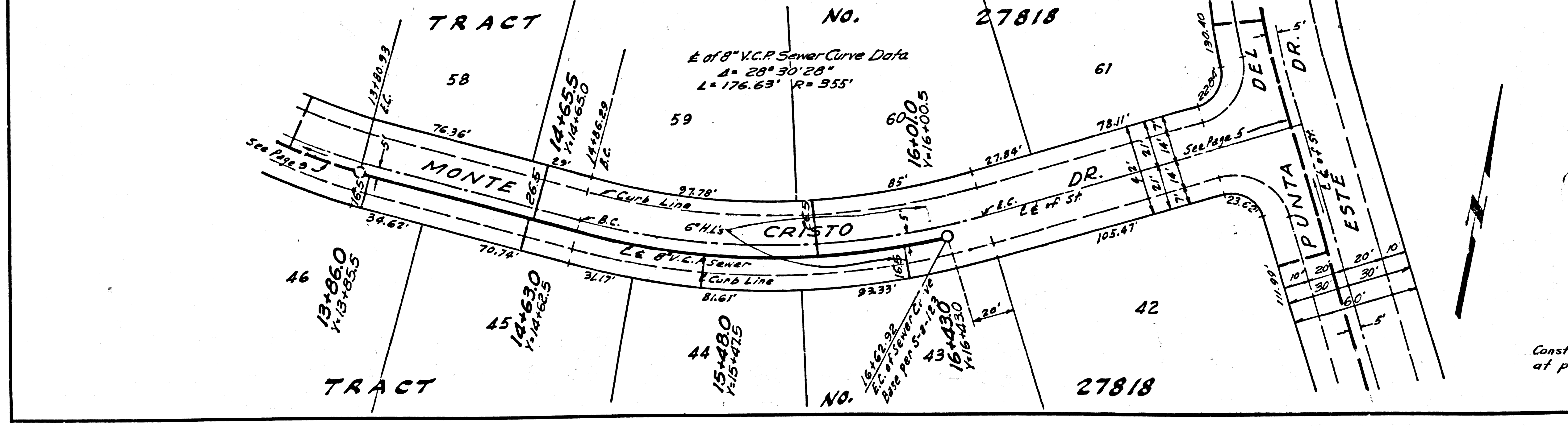
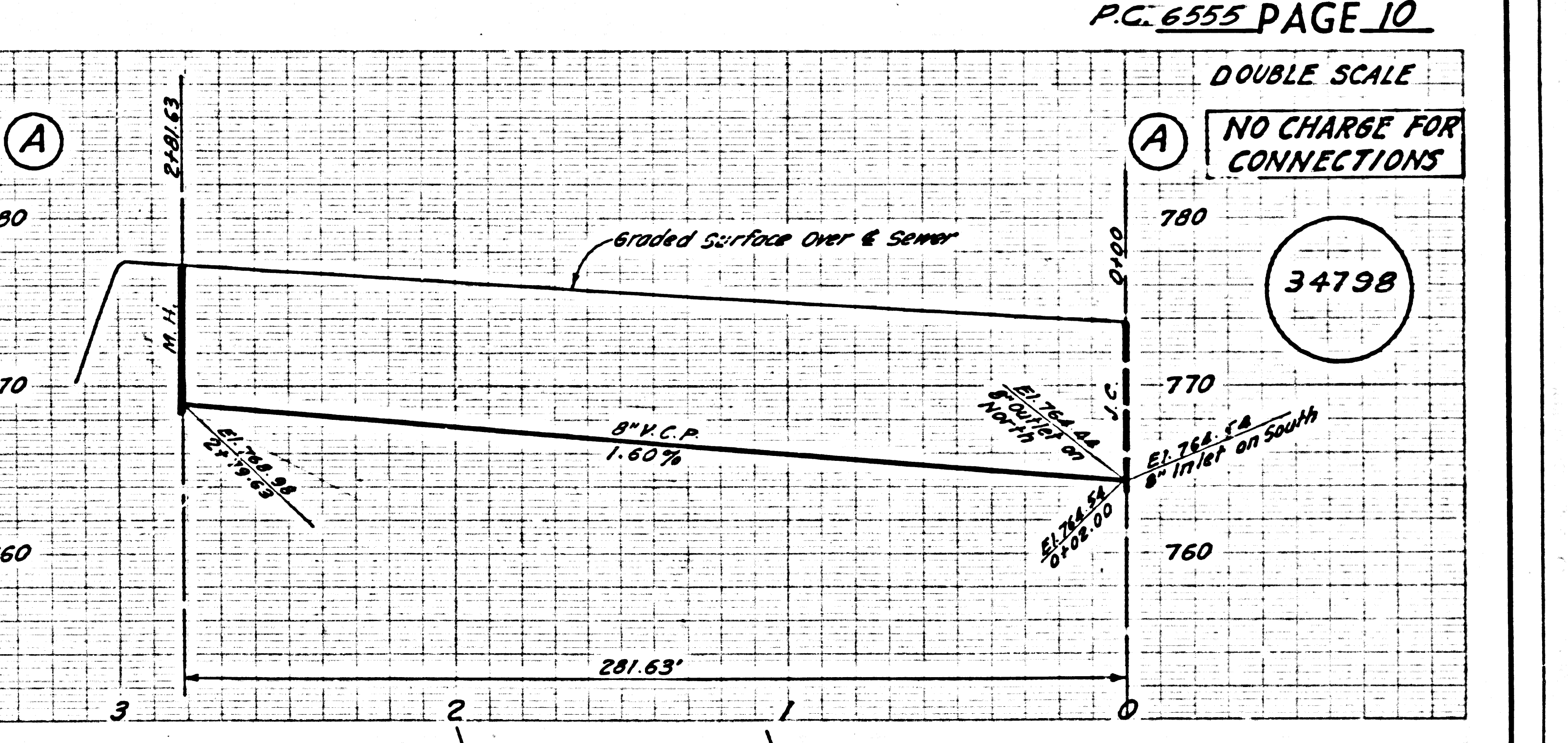
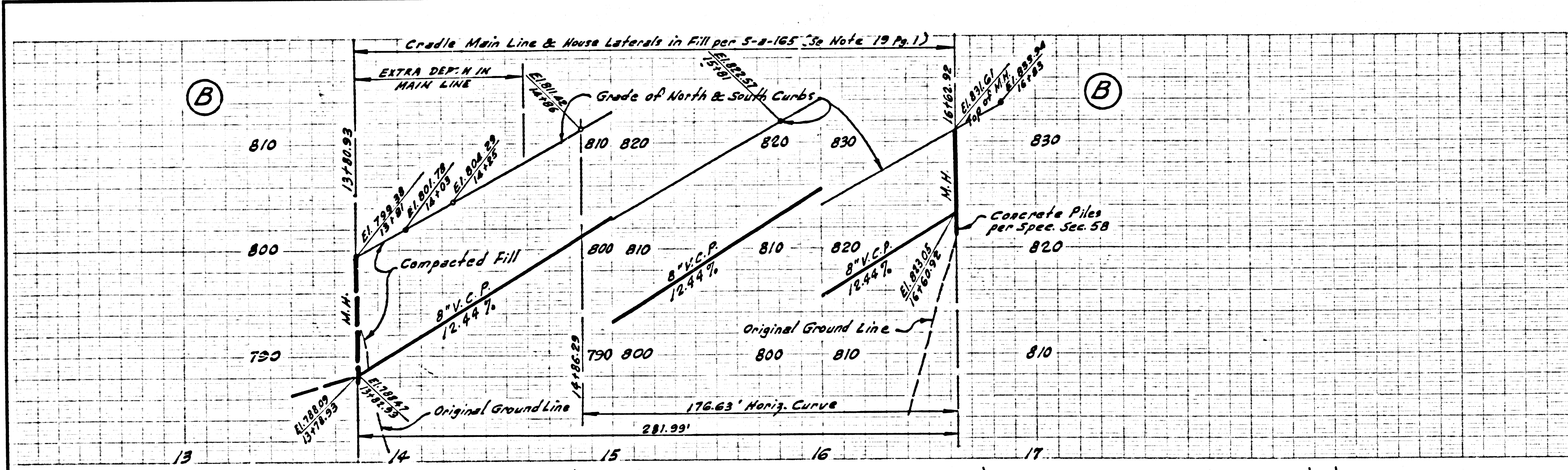
34797

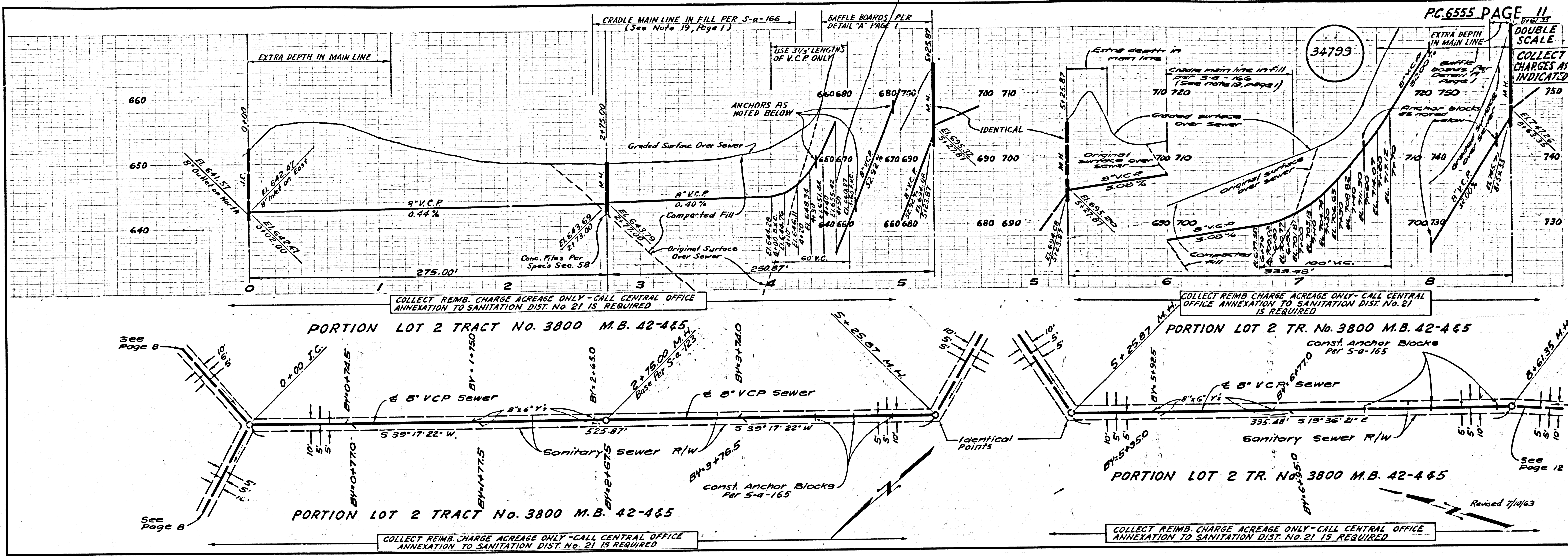
COLLECT CHARGES AS INDICATED



34798

NO CHARGE FOR CONNECTIONS

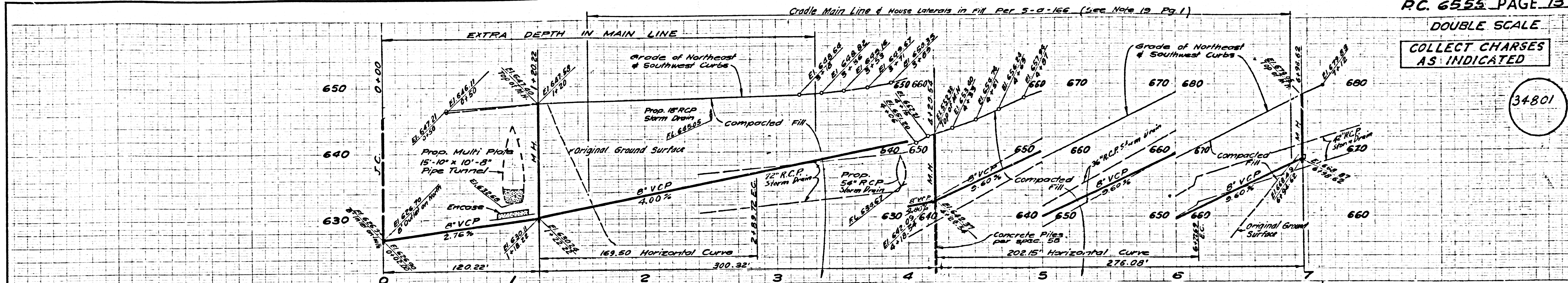




DOUBLE SCALE

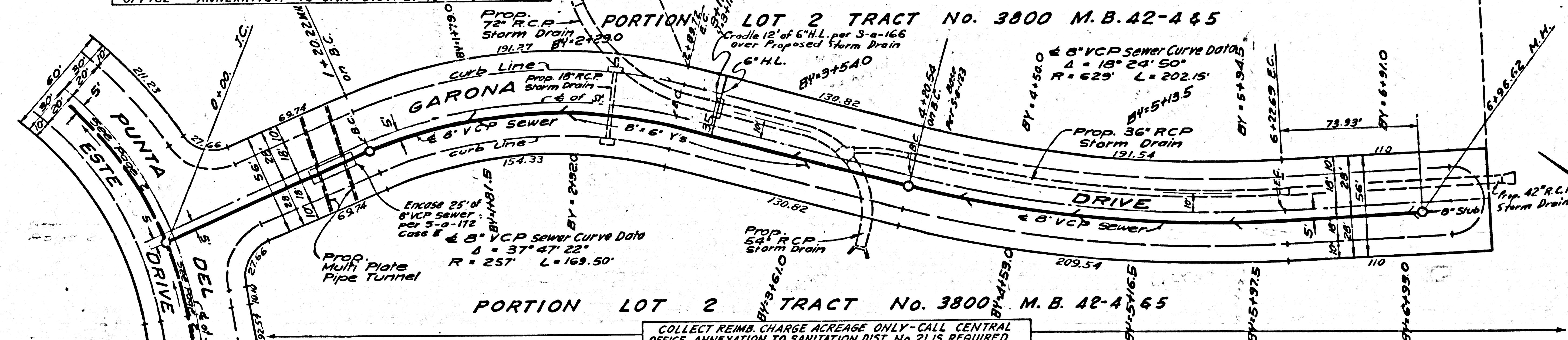
COLLECT CHARGES AS INDICATED

34801



COLLECT REIMB. CHARGE ACREAGE ONLY - CALL CENTRAL OFFICE - ANNEXATION TO SAN. DIST. 21 IS REQUIRED

NO CHARGE FOR CONNECTIONS



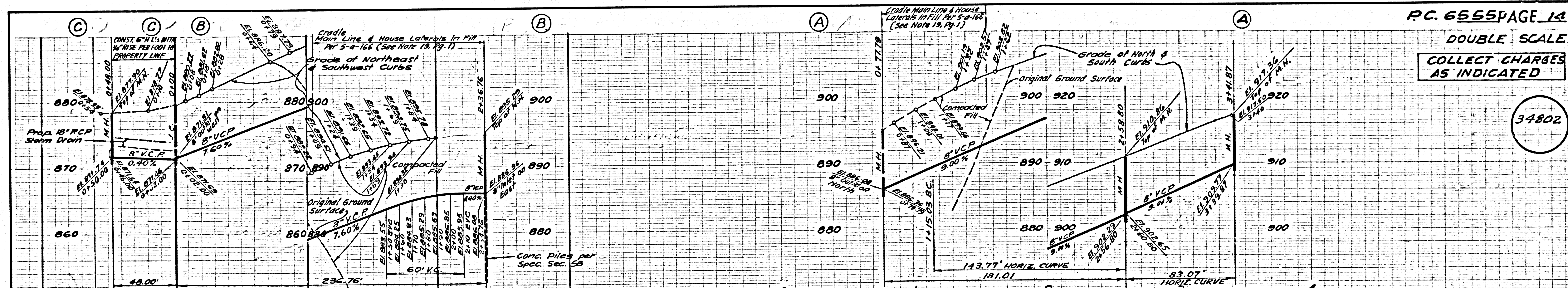
NO CHARGE FOR CONNECTIONS

COLLECT REIMB. CHARGE ACREAGE ONLY - CALL CENTRAL OFFICE - ANNEXATION TO SANITATION DIST. NO. 21 IS REQUIRED

DOUBLE SCALE

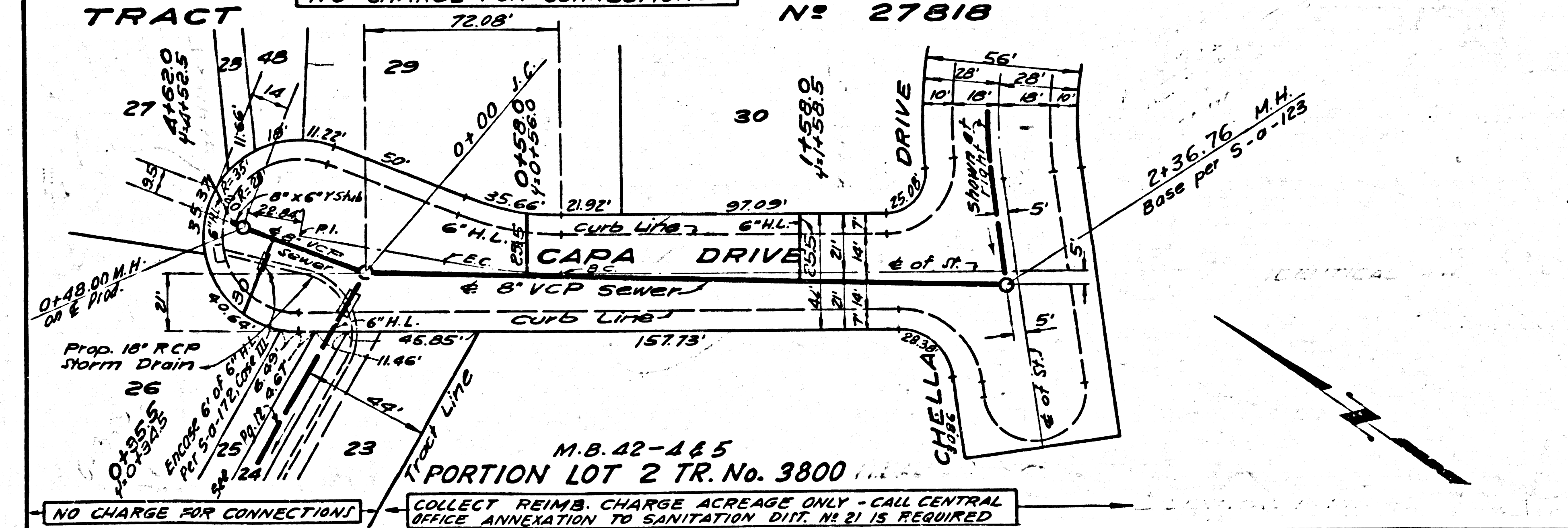
COLLECT CHARGES AS INDICATED

34802



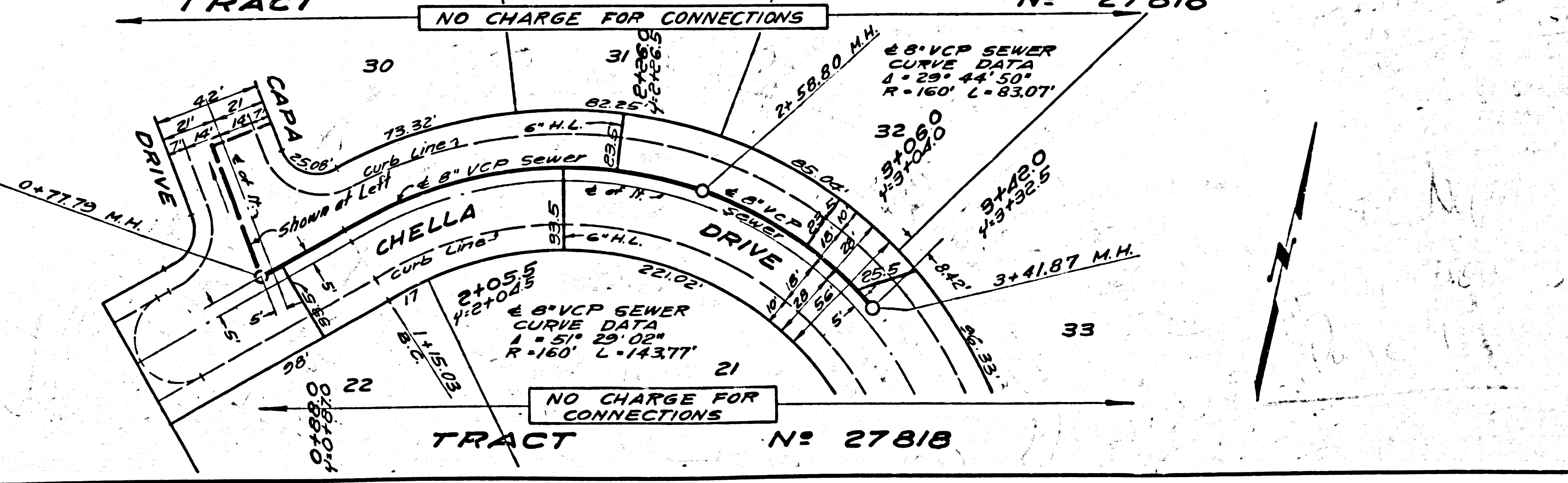
NO CHARGE FOR CONNECTIONS

NO CHARGE FOR CONNECTIONS



NO CHARGE FOR CONNECTIONS

COLLECT REIMB. CHARGE ACREAGE ONLY - CALL CENTRAL OFFICE - ANNEXATION TO SANITATION DIST. NO. 21 IS REQUIRED



NO CHARGE FOR CONNECTIONS

NO CHARGE FOR CONNECTIONS