

REVIEWED *T. D. ...* 3-26-63
 SUBMITTED *...* 3-28-63
 APPROVED *...* 3-29-63

CITY OF TEMPLE CITY

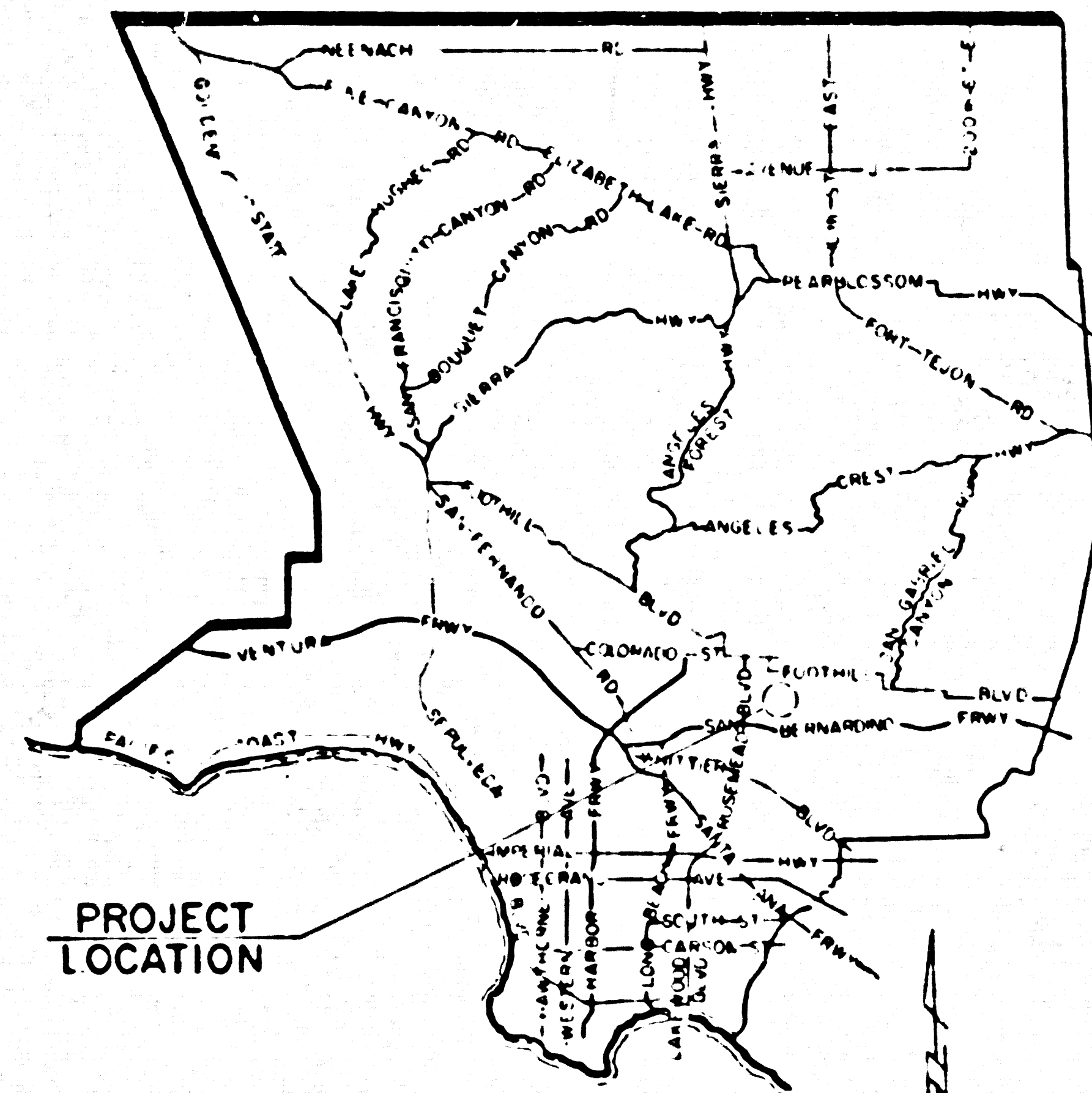
CASH CONTRACT NO. 41254

BALDWIN AVENUE

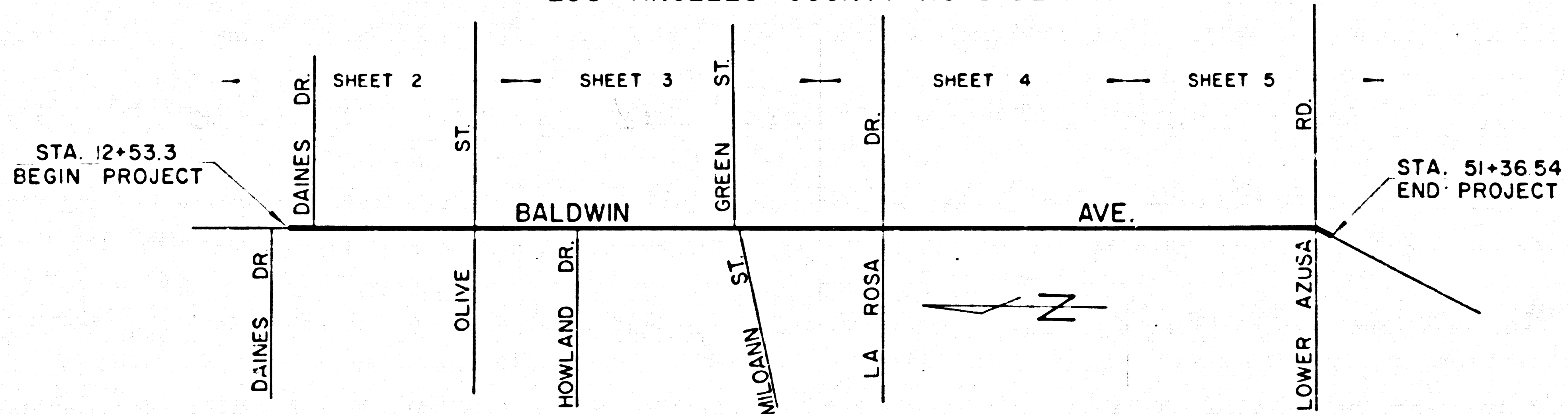
DAINES DR. to LOWER AZUSA RD.

TOTAL LENGTH 0.73 MILE

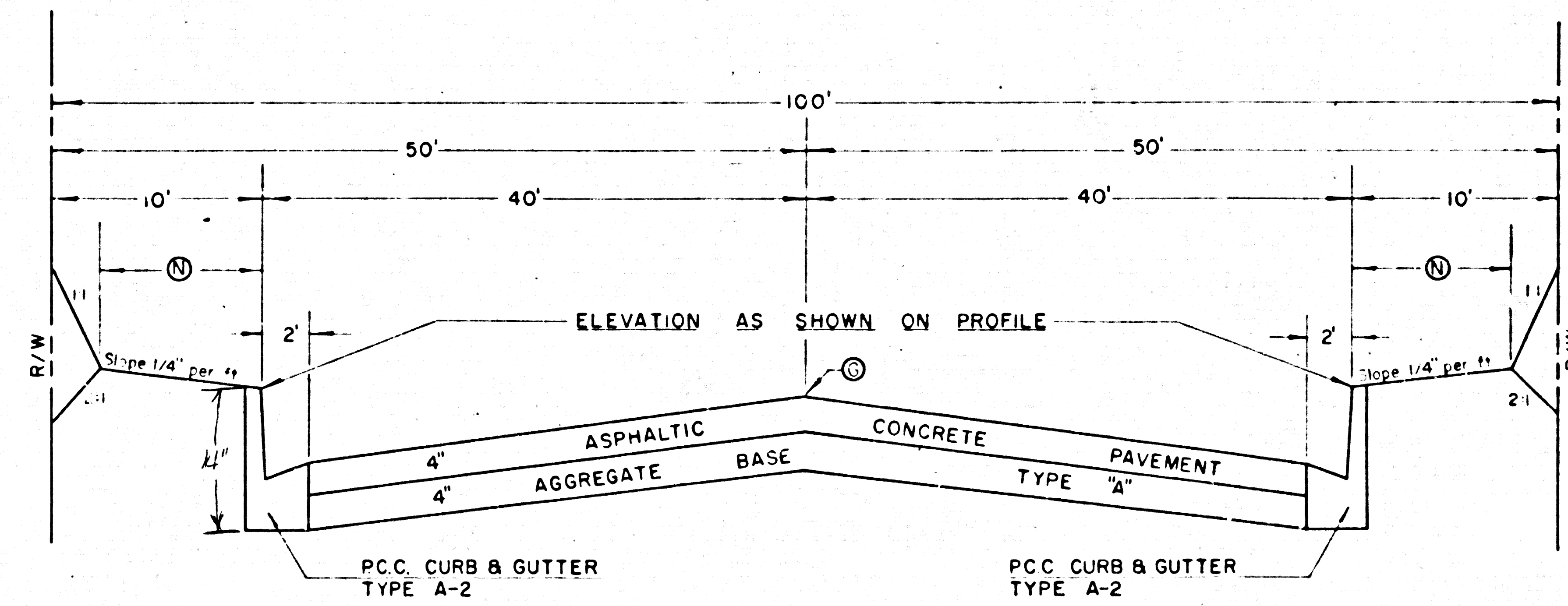
PREPARED BY
 LOS ANGELES COUNTY ROAD DEPARTMENT



VICINITY MAP



KEY MAP
 SCALE 1" = 400'



TYPICAL SECTION

⊙ — E LEVEL WITH LEFT T.C. STA. 14+00 to STA. 34+00
 ⊙ — E LEVEL WITH RIGHT T.C. STA. 38+00 to STA. 45+25
 ⊙ — ELEVATION AS SHOWN ON PROFILE

⊙ — 9' - DAINES DR. to STA. 37+75
 7' - STA. 38+00 to LOWER AZUSA RD.
 (EXCEPTION: 5' - STA. 44+75L to STA. 45+75L)

NOTE: The Contractor is required to contact the County Sanitation District's Division Engineer at Construction, Nevada 6-2097, forty-eight days prior to commencing the work of adjusting the District's manholes to the new grade.

CONSTRUCTION LEGEND

ITEMS UNDERLINED TO BE CONSTRUCTED

- ① PCC CURB & GUTTER
- ② PCC CURB
- ③ AC CURB
- ④ PCC GUTTER
- ⑤ 4" PCC WALK
- ⑥ 6" PCC
- ⑦ PCC PAVEMENT
- ⑧ AC PAVEMENT
- ⑨ AC PAVEMENT ON AGGREGATE BASE
- ⑩ AC PAVEMENT VARIABLE THICKNESS
- ⑪ PREMIX PAVEMENT
- ⑫ PREMIX PAVEMENT ON AGGREGATE BASE
- ⑬ PREMIX PAVEMENT VARIABLE THICKNESS
- ⑭ DRIVEWAYS AS SHOWN ON DRIVEWAY LIST
- ⑮ STANDARD ALLEY INTERSECTION
- ⑯ STANDARD CROSS GUTTER
- ⑰ INTERSECTION AS DETAILED ON SHEET INDICATED
- ⑱ DRAINAGE SYSTEM AS SHOWN ON SHEET INDICATED

⊙ S-1, 4 ABOVE THE LINE, CODE INDICATES THE TYPE OF STANDARD OR THICKNESS OF SURFACE MATERIAL IN INCHES

⊙ See Detail A, B BELOW THE LINE, REFERENCE TO DETAIL OR THICKNESS OF BASE MATERIAL IN INCHES.

⊙ L₁ CURVE DATA SHOWN IN TABLE ON PLAN

⊙ RT₁ STANDARD REVERSE TAPER

⊙ PF₁ STANDARD PARABOLIC FLARE

INDEX OF SHEETS

- SHEET NO 1 TITLE SHEET
- SHEET NO 2-5 PLAN AND PROFILE
- SHEET NO 6 INTERSECTION DETAILS

CONVENTIONAL SYMBOLS FOR EXISTING TOPOGRAPHY

- CURB
- CURB & GUTTER
- GUTTER
- PAVEMENT CONCRETE
- MACADAM
- WALK
- BARRICADE
- BUILDING
- DEAD MAN
- FENCE
- FIRE HYDRANT
- MANHOLE
- PIPE
- POLE
- R R. XING POST
- SIGN
- SIGNAL CONTROL BOX
- SIGNAL FLASHING TRAFFIC
- STANDPIPE
- STREET LIGHT
- TREES PALM
- OTHER
- VALVE
- WALLS BRICK
- CONCRETE
- STONE
- WELL OR VAULT

PROJECT ENGINEER *...*
 CHECKER *W. F. Hode*
 REFERENCES AD 18 40%
 R 17 40%

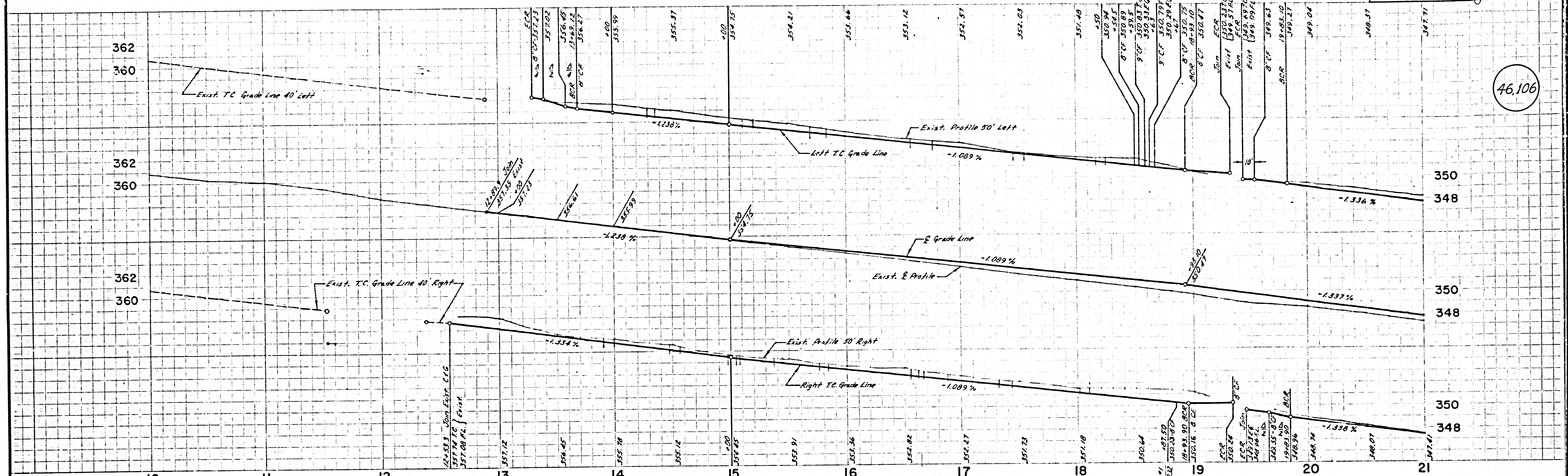
PROJECT NAME	BALDWIN AVENUE	
PROJECT NUMBER	41254	SHEET 1 OF 5 SHEETS

46.105

2220 CA

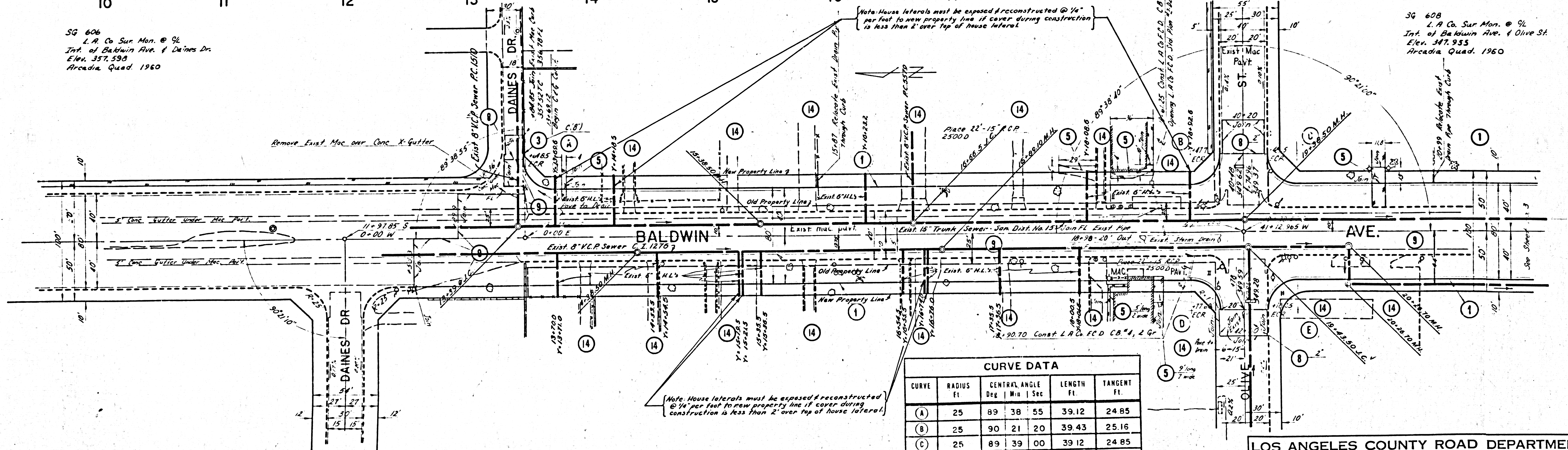
REVIEWED *[Signature]* DATE 3-2-63

46,106



SG 606
L.A. Co. Sur. Mon. @ 94
Int. of Baldwin Ave. & Daines Dr.
Elev. 357.598
Arcadia Quad. 1960

SG 608
L.A. Co. Sur. Mon. @ 94
Int. of Baldwin Ave. & Olive St.
Elev. 347.955
Arcadia Quad. 1960



Note: House laterals must be exposed & reconstructed @ 1/4" per foot to new property line if cover during construction is less than 2' over top of house lateral.

CURVE DATA					
CURVE	RADIUS Ft.	CENTRAL ANGLE	LENGTH Ft.	TANGENT Ft.	
		Deg. Min. Sec.			
(A)	25	89 38 55	39.12	24.85	
(B)	25	90 21 20	39.43	25.16	
(C)	25	89 39 00	39.12	24.85	
(D)	25	89 38 40	39.11	24.85	
(E)	25	90 21 00	39.42	25.15	

REVISIONS	
DRAWN BY P.P. [Signature]	CHECKED BY R. MOORE
REFERENCES S.D. [Signature] 10/1/62 S.D. [Signature] 10/1/62	

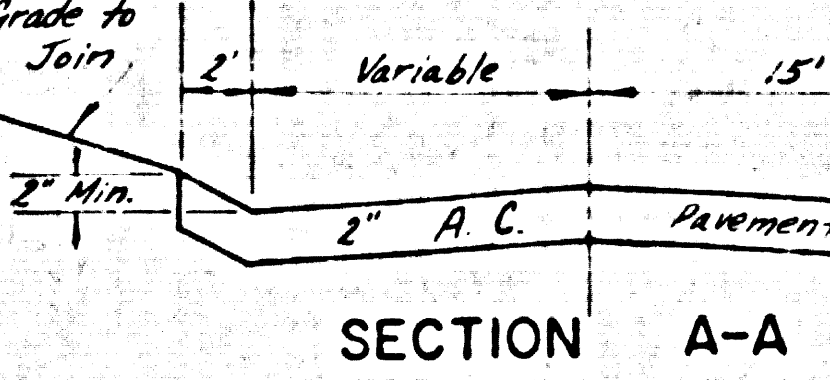
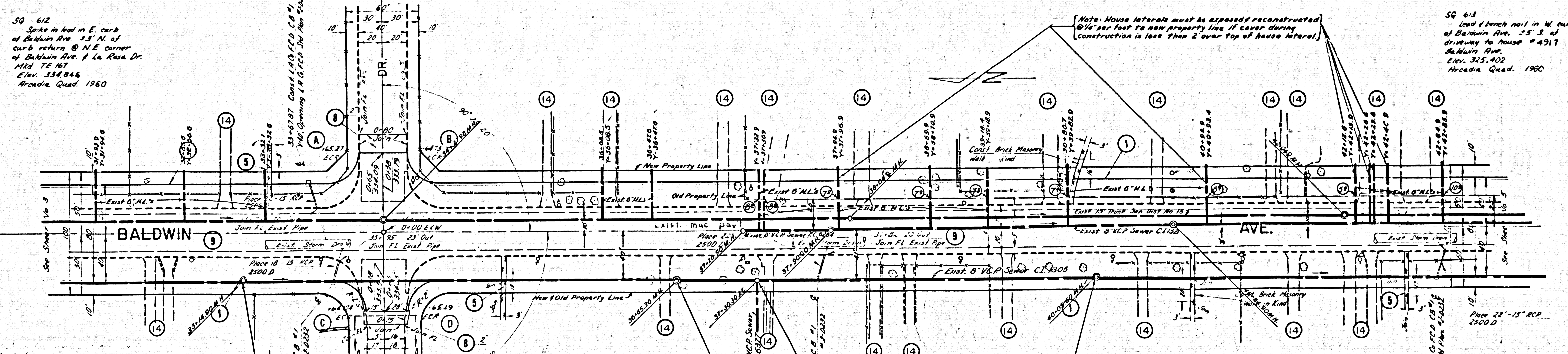
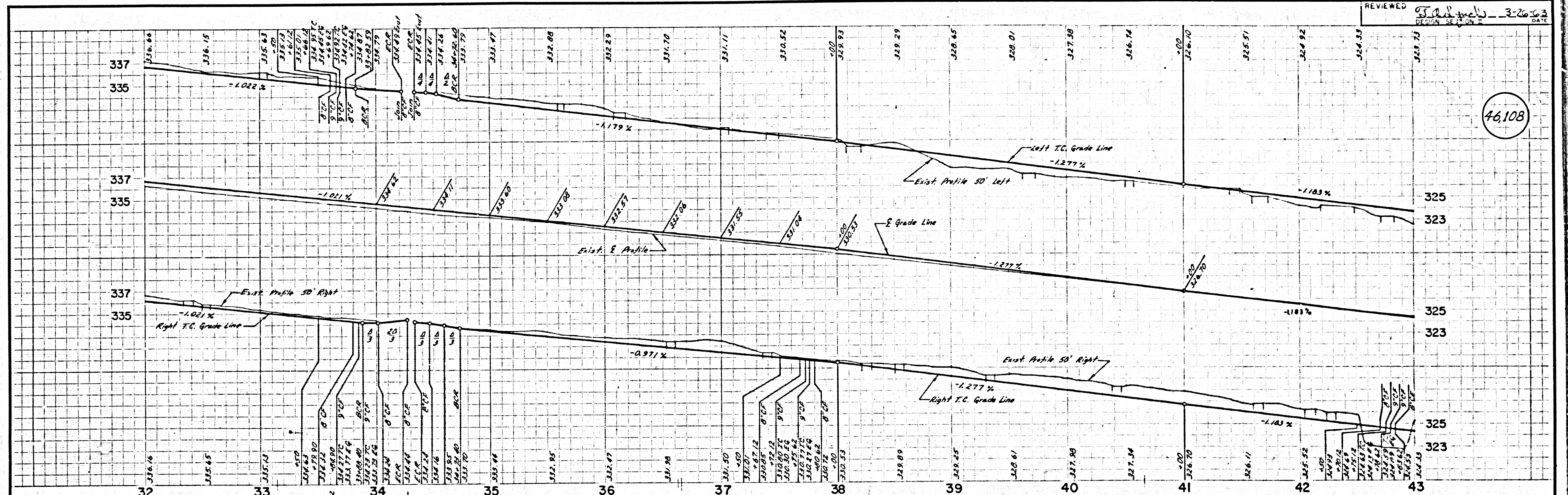
BRUNING 378W WHITNEY STANDARD SHEET 24 X 36 RD 630-P

LOS ANGELES COUNTY ROAD DEPARTMENT
HIGHWAY BALDWIN AVE.
 DIVISION LIMITS DAINES DR. to LOWER AZUSA RD.
 JOB NO. 41254 SHEET 2 OF 5 SHTS
 SCALE HORIZ. 1" = 40' VERT. 1" = 4'

46108

REVIEWED *[Signature]* DATE 3-26-63
DESIGN SECTION 2

46108



CURVE DATA				
CURVE	RADIUS FT	CENTRAL ANGLE Deg Min Sec	LENGTH FT	TANGENT FT
(A)	25	90 20 20	39.42	25.15
(B)	25	89 39 40	39.12	24.85
(C)	25	89 37 50	39.11	24.84
(D)	25	90 22 10	39.43	25.16

Note: Offset manhole from 1 foot westerly per 5-12 Case III

REVISIONS
DRAWN BY
CHECKED BY
REFERENCES

BRUNING 378W WHITNEY STANDARD SHEET 24 x 36 RD 630-P

LOS ANGELES COUNTY ROAD DEPARTMENT
HIGHWAY BALDWIN AVE.
 DIVISION LIMITS DAINES DR. to LOWER AZUSA RD.
 JOB NO. **41254** SHEET 4 OF 5 SHTS.
 SCALE HORIZ. 1" = 40' JOB NO. 41254 DWG. NO. 46108

