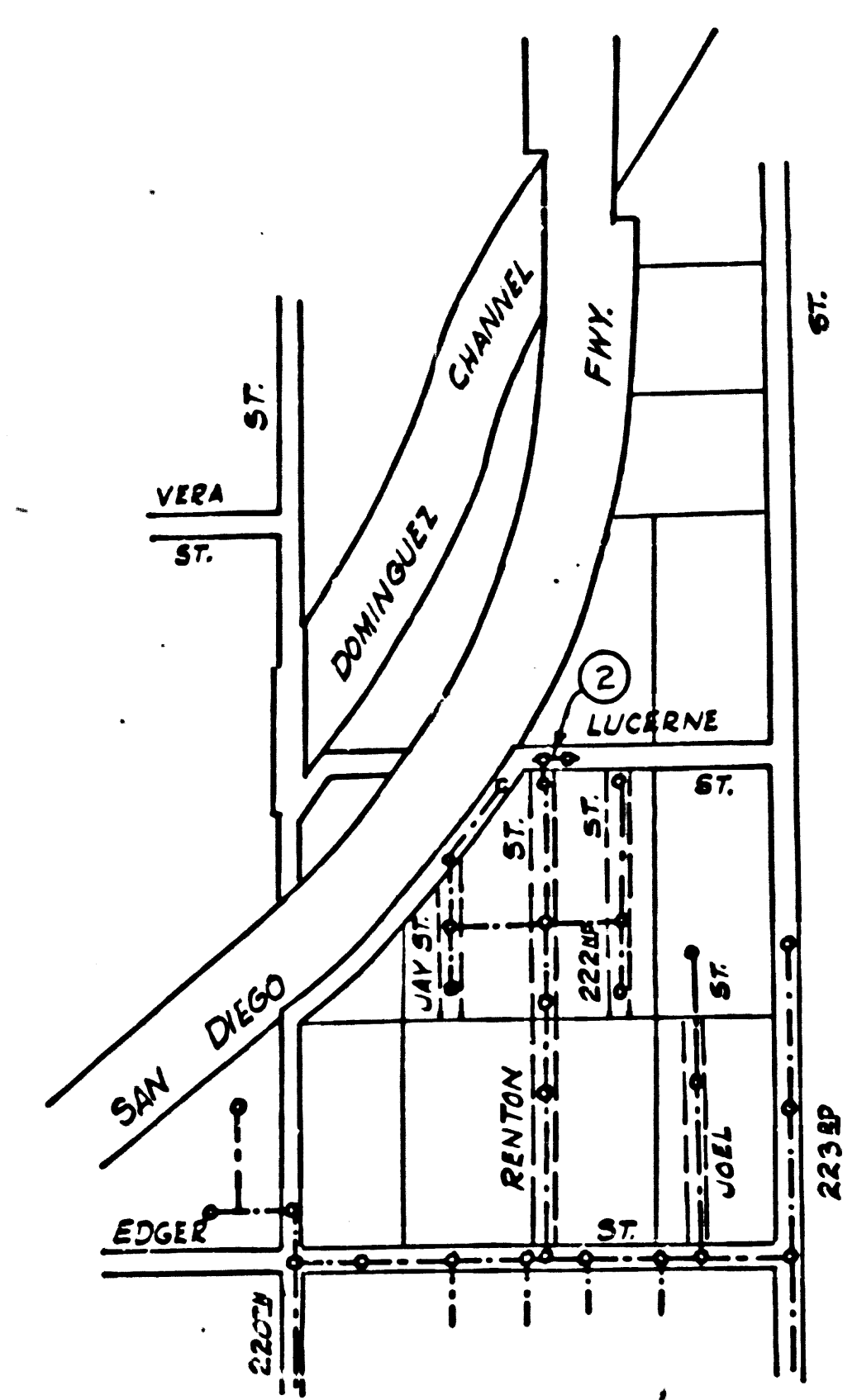


B.M. YF138 ELEV. 22.097  
 C.S. F.B. 1981 Pgs. 125, RENTON ST. &  
 LUCERNE ST., N.W. Cor. Boat Spike  
 In Conc. Walk 1' So. of Conc. Step at So. Side  
 of House N° 22117 QUAD. 19



INDEX MAP  
 SCALE: 1"=600'  
 P.C. 6559

LOMITA BLDG. DIST. NO. 12

TO BE CONSTRUCTED IN

LUCERNE STREET

PRIVATE CONTRACT NO. 6559

W.S. 28

1 SHEET, 2 PAGES  
 SCALE: VERT. 1"=4'  
 HORIZ. 1"=40' MAY, 1963

33949

PREPARED IN THE OFFICES OF  
 F.C. NYBYE / 528 ESPLANADE  
 REDONDO BEACH

By: *[Signature]*  
 REG. C. E. NO. 370

FOR LEGEND SEE PLAN NO. S-6-64

- NOTES:
1. PROVIDE STAKES ON THE PROPERTY LINE OR PROPERTY LINES PRODUCED AT RIGHT ANGLES TO THE SEWER LINE AT THE CENTER LINE OF EACH MANHOLE.
  2. NO REPRESENTATIVE OF THE COUNTY ENGINEER WILL SURVEY OR AT OUT ANY PORTION OF THE WORK.
  3. THE PRIVATE ENGINEER SHALL FURNISH THE COUNTY ENGINEER WITH GRADE SHEETS AND STATIONING FOR ALL HOUSE LATERALS AND Y BRANCHES AND SHALL PROVIDE STAKES FOR THEM AT THEIR PROPER LOCATIONS WITH STATIONING PLAINLY MARKED. ALL HOUSE LATERALS SHALL BE CONSTRUCTED IN A STRAIGHT ALIGNMENT AT RIGHT ANGLES FROM THE MAIN LINE SEWER EXCEPT AS SHOWN ON THE PLANS. HOUSE LATERALS FROM CHIMNEYS SHALL NOT HAVE AN ANGLE OF LESS THAN 45° WITH THE MAIN LINE SEWER. ANY CHANGE IN ALIGNMENT SHALL BE REQUESTED IN WRITING BY THE PRIVATE ENGINEER.
  4. THE PRIVATE ENGINEER SHALL FURNISH THE HOUSE LATERAL DEPTH AT THE PROPERTY LINE BELOW THE TOP OF CURB ELEVATION FOR EACH HOUSE LATERAL ON THE GRADE SHEET.
  5. NO REVISIONS SHALL BE MADE IN THESE PLANS WITHOUT THE APPROVAL OF THE COUNTY ENGINEER.
  6. THE CONTRACTOR SHALL NOTIFY THE CONSTRUCTION DIVISION BY TELEPHONE, MADISON 9-4747, EXT. 81551, AT LEAST TWENTY-FOUR HOURS BEFORE STARTING ANY WORK UNDER THIS CONTRACT.
  7. MANHOLES SHALL BE BRICK SEWER STRUCTURES PER S-104. PRECAST CONCRETE MANHOLES PER S-6-135 OR S-6-173 MAY BE USED AS AN ALTERNATE IN LOCATIONS APPROVED BY THE COUNTY ENGINEER.
  8. USE STANDARD MANHOLE FRAMES AND COVERS, S-107, EXCEPT AS NOTED.
  9. USE EXTRA STRENGTH PIPE. ALL PIPE IS STANDARD DEPTH.
  10. USE MECHANICAL COMPRESSION JOINTS FOR ALL V.C.P. JOINTS PER SPECS., SECS. 36 & 44 § 49.
  11. ALL HOUSE LATERALS SHALL BE CONSTRUCTED AND MAINTAINED IN ACCORDANCE WITH THE SEWERAGE SYSTEMS ACT, CHAPTER 10, DIVISION 10, CALIFORNIA V.C.P. SPECS., SECS. 23 & 44, OR MECHANICAL COMPRESSION JOINTS PER SPECS., SEC. 35.
  12. IF A POWER POLE IS WITHIN THREE FEET OF THE SEWER, THE SEWER SHALL BE ENCASED, PER S-6-172, CASE II, TWO FEET ON EACH SIDE FROM THE POINT OF INTERFERENCE.
  13. IF DURING THE COURSE OF CONSTRUCTION IT IS DETERMINED THAT THERE IS LESS THAN FOUR FEET OF COVER OVER THE TOP OF A MAIN LINE OR HOUSE LATERAL V.C.P. SEWER WHICH IS NOT INDICATED ON THE PLANS, THE PIPE SHALL BE ENCASED PER S-6-172, CASE III, UNLESS OTHERWISE APPROVED BY THE COUNTY ENGINEER.
  14. HOUSE LATERALS TO BE CONSTRUCTED WITH INVERTS AT A 1/2" RISE PER FOOT TO PROPERTY LINE.
  15. RESURFACE ALL TRENCHES WITHIN PAVED AREAS TO MEET L.A. COUNTY ROAD DEPT. OR CALIFORNIA STATE HIGHWAY REQUIREMENTS IN ACCORDANCE WITH PERMITS.
  16. FOR ALLOWABLE LEAKAGE TEST USE FORMULA NO. 2, SPECS., SEC. 24.
  17. ALL STATE AND LOCAL TRENCH SAFETY ORDERS WILL BE RIGIDLY ENFORCED.

NO CONNECTIONS FOR THE DISPOSAL OF INDUSTRIAL WASTES SHALL BE MADE TO SEWERS SHOWN ON THESE DRAWINGS WITHOUT WRITTEN PERMISSION FROM THE CHIEF ENGINEER AND GENERAL MANAGER OF THE COUNTY SANITATION DISTRICTS.

COLLECT CHARGES AS INDICATED  
*L. Curtis 8-2-63*

NOTE: GRADES TO WHICH THIS IMPROVEMENT IS TO BE CONSTRUCTED ARE SHOWN ON PLANS AND PROFILES. GRADE POINTS FOR TOP OF CURBS, CENTER LINE OF STREETS, OR CENTER LINE OF ALLEYS ARE SHOWN BY CIRCLES OR PROFILES AT ALL POINTS BETWEEN DESIGNATED POINTS. THE GRADE SHALL BE ESTABLISHED SO AS TO CONFORM TO A STRAIGHT LINE DRAWN BETWEEN SAID DESIGNATED POINTS. ELEVATIONS ARE IN FEET ABOVE U.S.C. & G.S. SEA LEVEL DATUM OF 1929.

THIS DRAWING AND THE DATA HEREON ARE HEREBY MADE A PART OF THE SPECIFICATIONS. WORK SHALL BE CONSTRUCTED ACCORDING TO STANDARD SPECIFICATIONS DATED JULY 25, 1962 ON FILE IN THE OFFICE OF THE COUNTY ENGINEER AND SHALL BE PROSECUTED ONLY IN THE PRESENCE OF THE COUNTY ENGINEER.

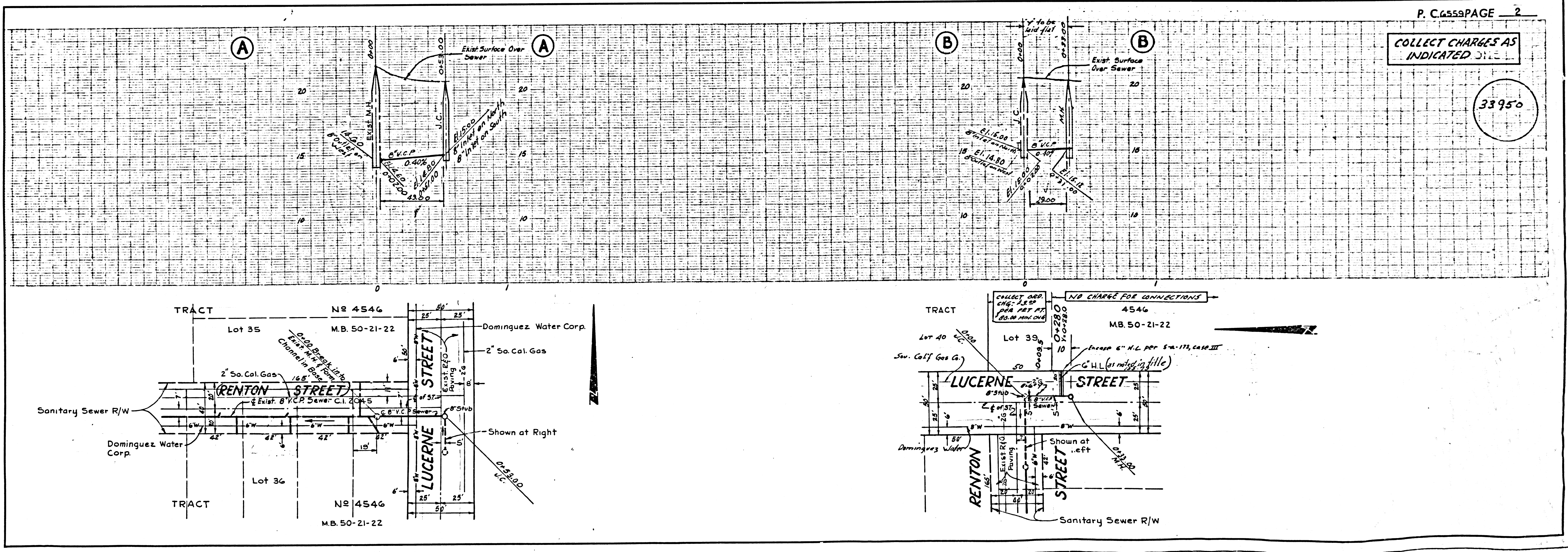
BEFORE WORK CAN BE STARTED, THE CONTRACTOR MUST OBTAIN A PERMIT TO EXCAVATE IN COUNTY STREETS FROM THE L.A. COUNTY ROAD DEPT., DISTRICT OFFICE NO. 3, AND PAY A FEE TO THE COUNTY ENGINEER, ROOM 330, COUNTY ENGINEERING BUILDING, 108 WEST SECOND STREET OR PALOS VERDES - CENTINELA REGIONAL OFFICE, SUFFICIENT TO COVER THE COST OF CONSTRUCTION INSPECTION AND RECORD PLANS.

APPROVAL OF THIS PLAN BY THE COUNTY OF LOS ANGELES DOES NOT CONSTITUTE A REPRESENTATION AS TO THE ACCURACY OF THE LOCATION OR OF THE EXISTENCE OR NON-EXISTENCE OF ANY UNDERGROUND UTILITY PIPE, OR STRUCTURE WITHIN THE LIMITS OF THIS PROJECT. THIS NOTE APPLIES TO ALL PAGES.

IF WORK IS TO BE DONE IN A STATE HIGHWAY, A PERMIT MUST BE OBTAINED FROM THE STATE OF CALIFORNIA, DIVISION OF HIGHWAYS, 120 SOUTH SPRING STREET, LOS ANGELES, CALIFORNIA.

COUNTY OF LOS ANGELES, CALIFORNIA  
 JOHN A. LAMBIE, COUNTY ENGINEER J. D. PARKHURST, CHIEF ENGINEER  
 CO. SAN. DIST. NO. 12  
 APPROVED BY: *[Signature]* ASSISTANT SANITATION ENGINEER  
 APPROVED BY: *[Signature]* OFFICE ENGINEER  
 SUBMITTED BY: *[Signature]* REGIONAL ENGINEER  
 CHECKED BY: *[Signature]* REG. C. E. NO. 13243  
 REG. C. E. NO. 5464

J.N. 0360.25



COLLECT CHARGES AS INDICATED

33950