

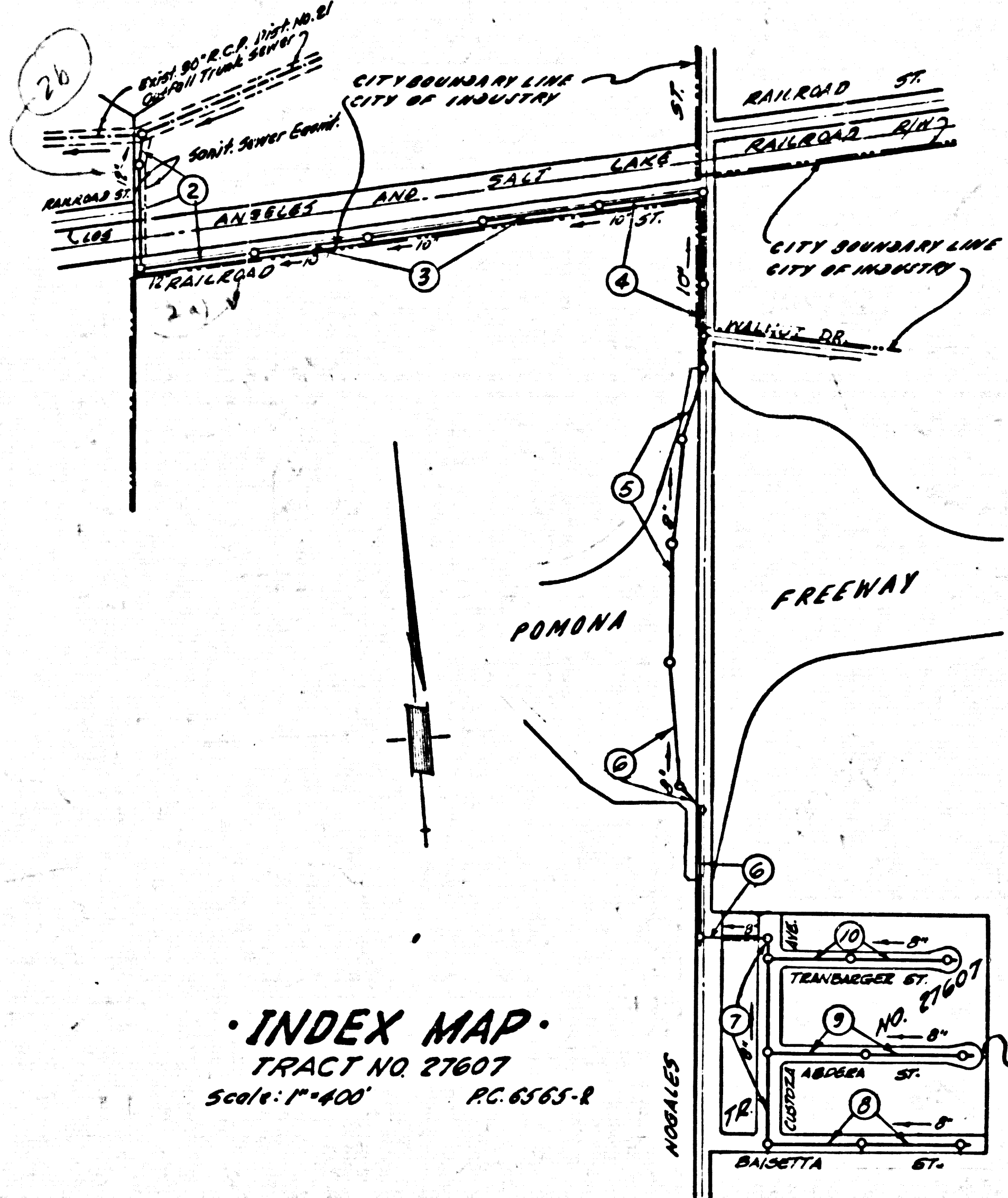
B.M. 5G.1279 ELEV. 466.836
 F.S. L.F. 50' Edge of 12" Stand Pipe
 at 25' E. of Nogales Ave.
 1 1/2 Mile 90 Valley
 and OTTERBEIN QUAD. 1955

REVISION
 1. Pages 4-5 - Relocated Main Line 15' Westwardly
 of E. of Nogales St. - Move M.H.'s to agree.
 2. Page 6 - Relocated Main Line 13' Westwardly
 of E. of Nogales St. - Move M.H.'s to agree.

APPROVED:
 [Signature] RE C11636 Date: 3-12-64
 Office of the COUNTY ENGINEER

REVISION
 Page 2 - Relocated Main Line to fit
 property Line as determined. Moved
 M.H. to agree.

APPROVED:
 [Signature] RE C11636 Date: 4-21-64
 Office of the COUNTY ENGINEER



COUNTY OF LOS ANGELES SEWER
 PERMISSION TO
 CONNECT TO THIS
 SEWER TO BE OBTAINED
 FROM THE COUNTY
 ENGINEER

Approved [Signature]
 City Manager 1-14-64
 City of Industry

NOTE: Before any excavation is
 done near the existing 30" High
 Pressure Gas Line North of the
 L.A. & S.L. R.R. 500' to 550' at
 the contractor's responsibility
 notify the So. Cal. Gas Co. at least
 48 hours notice. Telephone
 529-2883, Etc.

NOTICE TO CONTRACTORS
 Los Angeles County Road Dept.
 requires that on Nogales Street
 one lane of traffic with flagman must
 be maintained during working hours and
 that two lanes must be maintained at
 all other times.

**COLLECT CHARGES
 AS INDICATED**
 D.B. Olson 1/22/63

NO CONNECTIONS FOR THE DISPOSAL OF
 INDUSTRIAL WASTES SHALL BE MADE TO
 SEWERS SHOWN ON THESE DRAWINGS
 WITHOUT WRITTEN PERMISSION FROM THE
 CHIEF ENGINEER AND GENERAL MANAGER OF
 THE COUNTY SANITATION DISTRICTS.

Thomsen Eng. Inc. has shown underground
 structures and utilities on this project from the
 best available records and does not accept any
 responsibility for the location of structures shown
 nor for the existence of any structures not shown.
 It shall be the contractor's responsibility to verify
 the locations of structures shown and the existence
 of any structures not shown.

- NOTES:
1. PROVIDE STAKES ON THE PROPERTY LINE OR PROPERTY LINES PRODUCED AT RIGHT ANGLES TO THE SEWER LINE AT THE CENTER LINE OF EACH MANHOLE.
 2. NO REPRESENTATIVE OF THE COUNTY ENGINEER WILL SURVEY OR LAY OUT ANY PORTION OF THE WORK.
 3. THE PRIVATE ENGINEER SHALL FURNISH THE COUNTY ENGINEER WITH GRADE SHEETS AND STATIONING FOR ALL HOUSE LATERALS AND Y BRANCHES AND SHALL PROVIDE STAKES FOR THEM AT THEIR PRECISE LOCATIONS WITH STATIONING PLAINLY MARKED. ALL HOUSE LATERALS SHALL BE CONSTRUCTED IN A STRAIGHT ALIGNMENT AT RIGHT ANGLES TO THE MAIN LINE SEWER EXCEPT AS SHOWN ON THE PLANS. HOUSE LATERALS FROM CHIMNEYS SHALL NOT HAVE AN ANGLE OF LESS THAN 45° WITH THE MAIN LINE SEWER. ANY CHANGE IN ALIGNMENT SHALL BE REQUESTED BY THE PRIVATE ENGINEER.
 4. THE PRIVATE ENGINEER SHALL FURNISH THE HOUSE LATERAL DEPTH AT THE PROPERTY LINE BELOW THE TOP OF CURB ELEVATION FOR EACH HOUSE LATERAL ON THE GRADE SHEET.
 5. NO REVISIONS SHALL BE MADE IN THESE PLANS WITHOUT THE APPROVAL OF THE COUNTY ENGINEER.
 6. THE CONTRACTOR SHALL NOTIFY THE CONSTRUCTION DIVISION BY TELEPHONE, MADISON 9-2727, EXT. 8158, AT LEAST TWENTY-FOUR HOURS BEFORE STARTING ANY WORK UNDER THIS CONTRACT.
 7. MANHOLES SHALL BE BRICK SEWER STRUCTURES PER 5-104, PRECAST CONCRETE MANHOLES PER 5-135 OR 5-173 MAY BE USED AS AN ALTERNATE IN LOCATIONS APPROVED BY THE COUNTY ENGINEER.
 8. USE STANDARD MANHOLE FRAMES AND COVERS, 5-277, EXCEPT AS NOTED.
 9. MANHOLE TOPS IN UNIMPROVED RIGHTS-OF-WAY TO BE SIX INCHES ABOVE FINISHED GRADE.
 10. USE EXTRA STRENGTH PIPE. ALL PIPE IS STANDARD DEPTH EXCEPT AS NOTED.
 11. USE MECHANICAL COMPRESSION JOINTS FOR ALL V.C.P. JOINTS PER SPEC., SECS. 26 & 48, 169.
 12. IF A POWER POLE IS WITHIN THREE FEET OF THE SEWER, THE SEWER SHALL BE ENCASED, PER 5-172, CASE II, TWO FEET ON EITHER SIDE FROM THE POINT OF INTERFERENCE.
 13. IF DURING THE COURSE OF CONSTRUCTION IT IS DETERMINED THAT THERE IS LESS THAN FOUR FEET OF COVER OVER THE TOP OF A MAIN LINE OR HOUSE LATERAL V.C.P. SEWER WHICH IS NOT INDICATED ON THE PLANS, THE PIPE SHALL BE ENCASED PER 5-172, CASE III, UNLESS OTHERWISE APPROVED BY THE COUNTY ENGINEER.
 14. HOUSE LATERALS TO BE CONSTRUCTED WITH INVERTS AT PROPERTY LINE. . . FEET BELOW CURB GRADE EXCEPT AS NOTED.
 15. RESURFACE ALL TRENCHES WITHIN PAVED AREAS TO MEET L.A. COUNTY ROAD DEPT. OR CALIFORNIA STATE HIGHWAY REQUIREMENTS IN ACCORDANCE WITH PERMITS.
 16. FOR ALLOWABLE LEAKAGE TEST USE FORMULA NO. 2, SPEC., SEC. 54.
 17. ALL STATE & LOCAL TRAFFIC SAFETY ORDERS WILL BE RIGIDLY ENFORCED.
 18. "TYTON" TYPE SLIP ON JOINTS MAY BE USED FOR CAST IRON PIPE PER SEC. 40 OF SPECS.

PROFILE ALIGNMENT AND GRADE OF
SANITARY SEWERS PAGE 1
 TO BE CONSTRUCTED IN
TRACT NO. 27607
PRIVATE CONTRACT NO. 6565-R
 W.S. 38
 5 SHEETS, 10 PAGES
 SCALE: VERT. 1"=4'
 HORIZ. 1"=40'
 MAY, 1963
 PREPARED IN THE OFFICES OF
THOMSEN ENGINEERING INC.
 [Signature]
 REG. C. E. NO. 2224
 FOR LEGEND SEE PLAN NO. 5-64

NOTE:
 GRADES TO WHICH THE IMPROVEMENT IS TO BE CONSTRUCTED ARE SHOWN ON PLANS AND PROFILES. GRADE POINTS FOR TOP OF CURB, CENTER LINE OF STREETS, OR CENTER LINE OF ALLEYS ARE SHOWN BY CIRCLES ON PROFILES. AT ALL POINTS BETWEEN DESIGNATED POINTS THE GRADE SHALL BE ESTABLISHED SO AS TO CONFORM TO A STRAIGHT LINE DRAWN BETWEEN SAID DESIGNATED POINTS. ELEVATIONS ARE IN FEET ABOVE U.S.C. & G.S. SEA LEVEL DATUM OF 1929.

THIS DRAWING AND THE DATA HEREON ARE HEREBY MADE A PART OF THE SPECIFICATIONS. WORK SHALL BE CONSTRUCTED ACCORDING TO STANDARD SPECIFICATIONS DATED MAY 22, 1962, ON FILE IN THE OFFICE OF THE COUNTY ENGINEER AND SHALL BE PROSECUTED ONLY IN THE PRESENCE OF THE COUNTY ENGINEER.

BEFORE WORK CAN BE STARTED, THE CONTRACTOR MUST OBTAIN A PERMIT TO EXCAVATE IN COUNTY STREETS FROM THE L.A. COUNTY ROAD DEPT., DISTRICT OFFICE NO. 1, AND PAY A FEE TO THE COUNTY ENGINEER, ROOM 300, COUNTY ENGINEERING BUILDING, 100 WEST SECOND STREET OR [Signature] REGIONAL OFFICE, SUFFICIENT TO COVER THE COST OF CONSTRUCTION INSPECTION AND RECORD PLANS.

APPROVAL OF THIS PLAN BY THE COUNTY OF LOS ANGELES DOES NOT CONSTITUTE A REPRESENTATION AS TO THE ACCURACY OF THE LOCATION OF OR THE EXISTENCE OR NON-EXISTENCE OF ANY UNDERGROUND UTILITY PIPE, OR STRUCTURE WITHIN THE LIMITS OF THIS PROJECT. THIS NOTE APPLIES TO ALL PAGES.

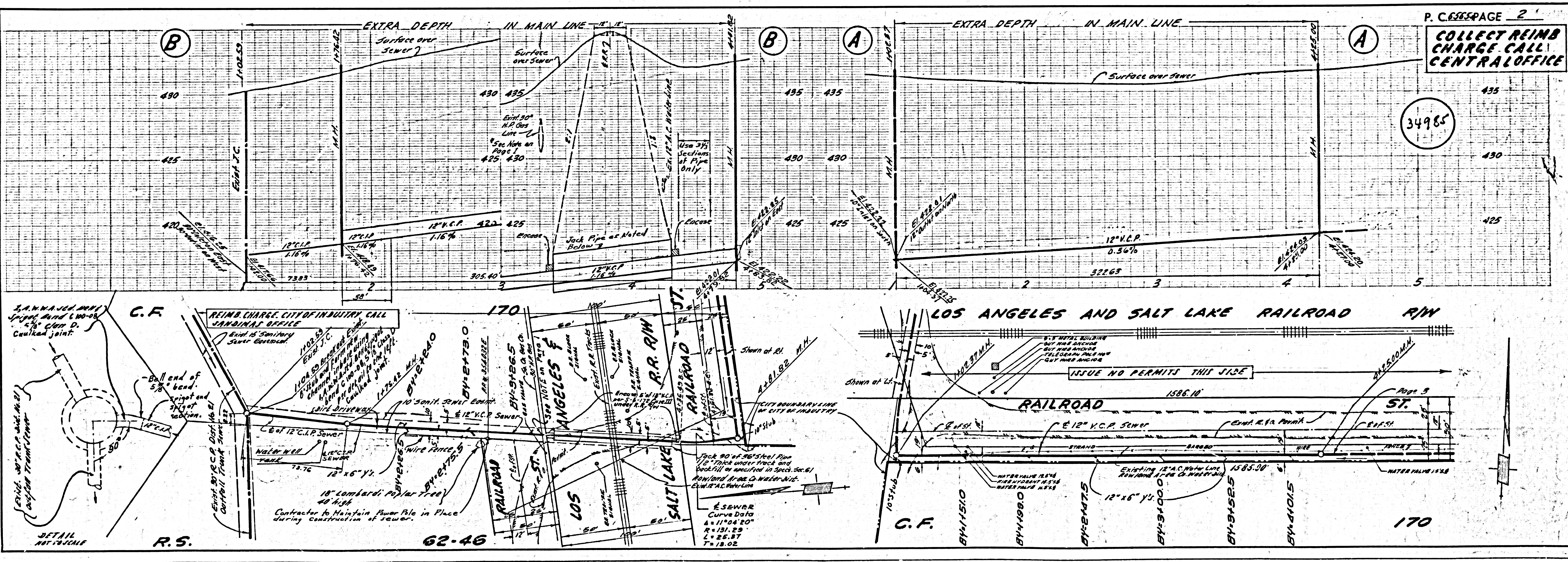
IF WORK IS TO BE DONE IN A STATE HIGHWAY, A PERMIT MUST BE OBTAINED FROM THE STATE OF CALIFORNIA, DIVISION OF HIGHWAYS, 120 SOUTH SPRING STREET, LOS ANGELES, CALIFORNIA.

COUNTY OF LOS ANGELES, CALIFORNIA
 JOHN A. LAMBIE, COUNTY ENGINEER
 J. D. PARKHURST, CHIEF ENGINEER
 CO. SAN. DIST. NO. 2

APPROVED BY [Signature] ASSISTANT SANITATION ENGINEER
 APPROVED BY [Signature] OFFICE ENGINEER

SUBMITTED BY [Signature] J.A.M. - SANITATION OFFICE REB. NO. 11636
 CHECKED BY [Signature] 11-29-63
 REG. C. E. NO. 2224

J.N. 0360.29

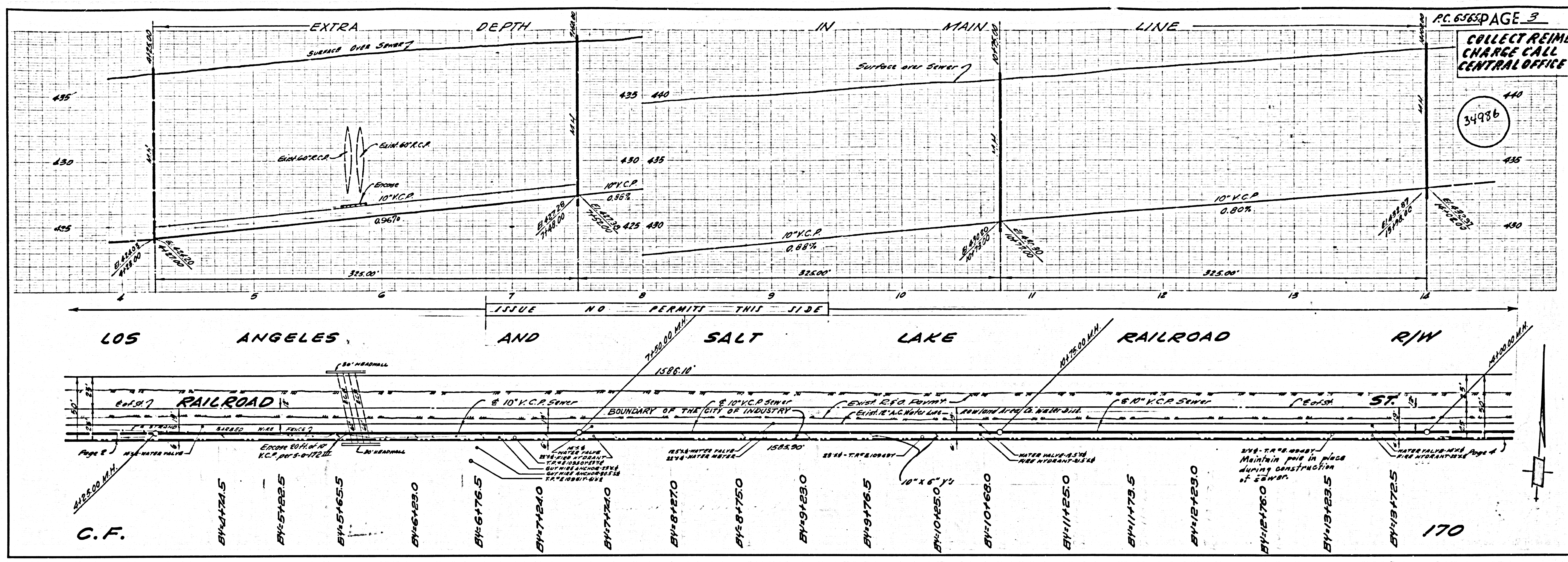


P.C. 6565-R PAGE 2
**COLLECT REIMB
 CHARGE CALL
 CENTRAL OFFICE**

34985

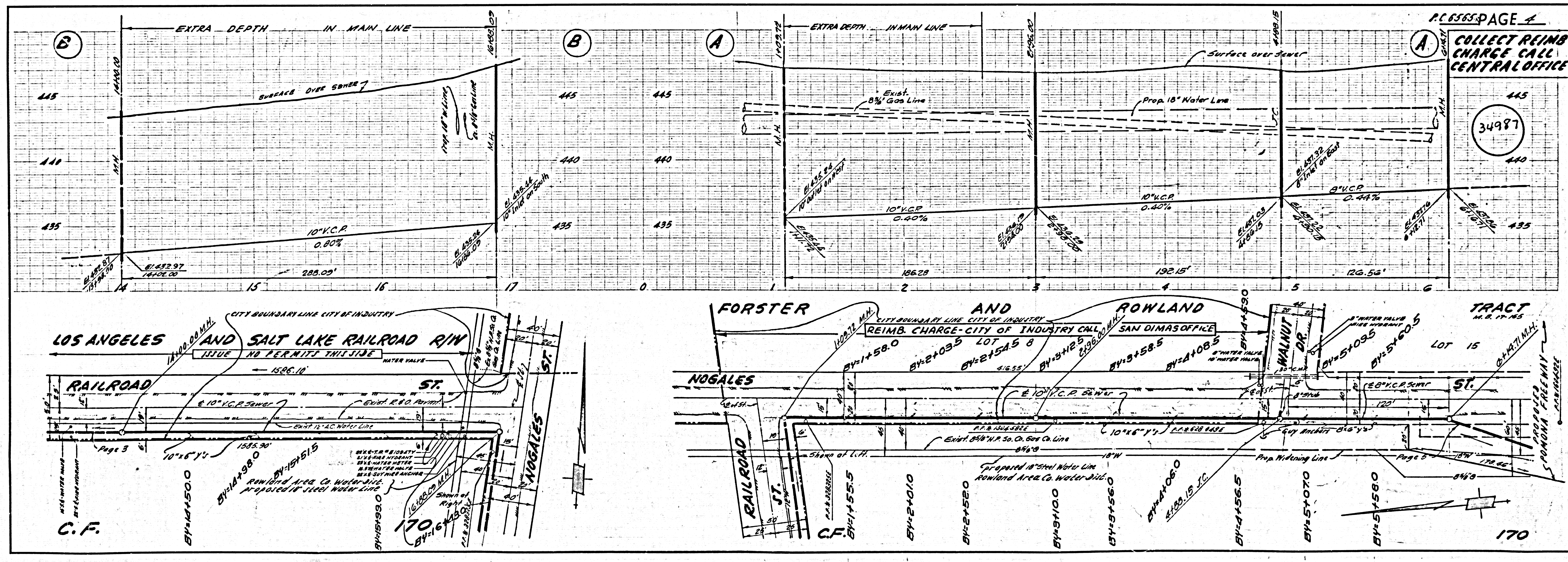
COLLECT REIMB CHARGE CALL CENTRAL OFFICE

34986

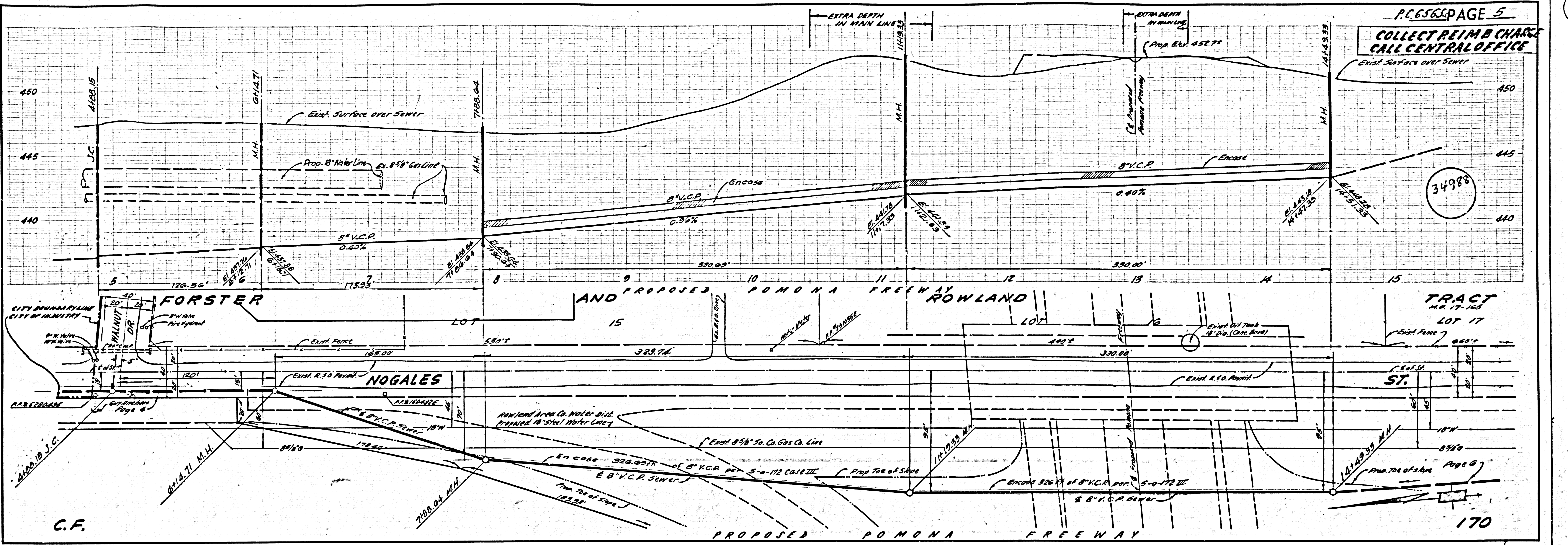


COLLECT REIMB CHARGE CALL CENTRAL OFFICE

34987

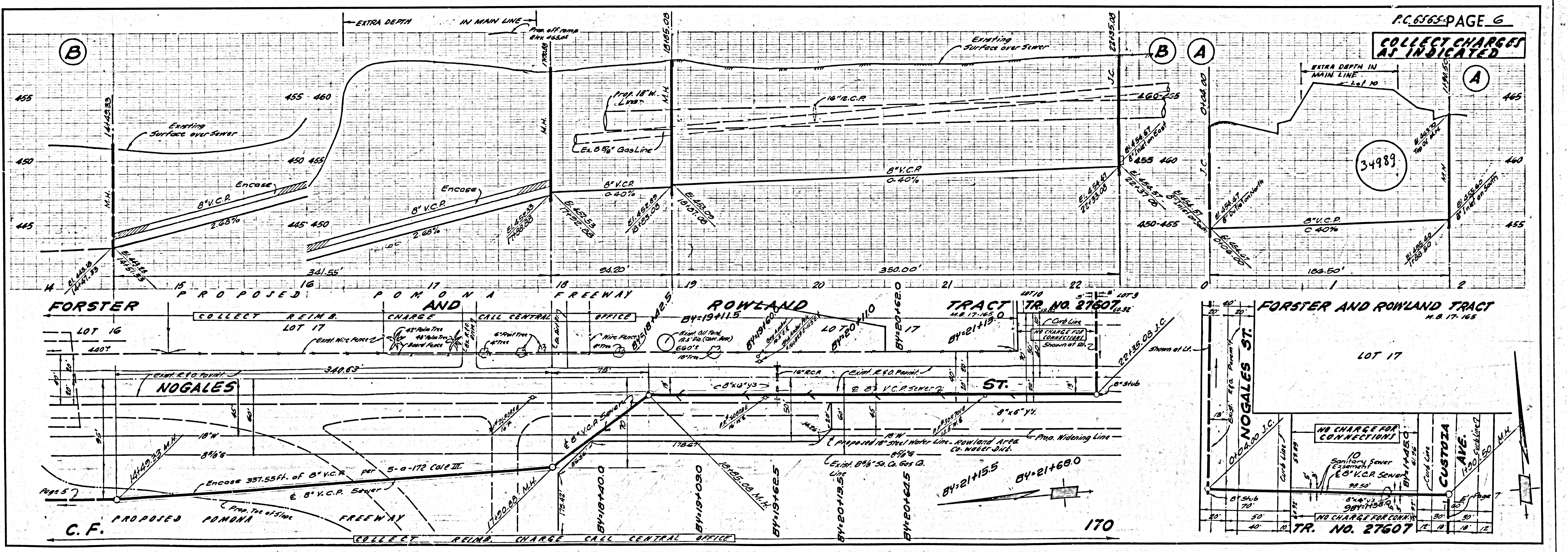


COLLECT REIMB CHARGE
CALL CENTRAL OFFICE



C.F.

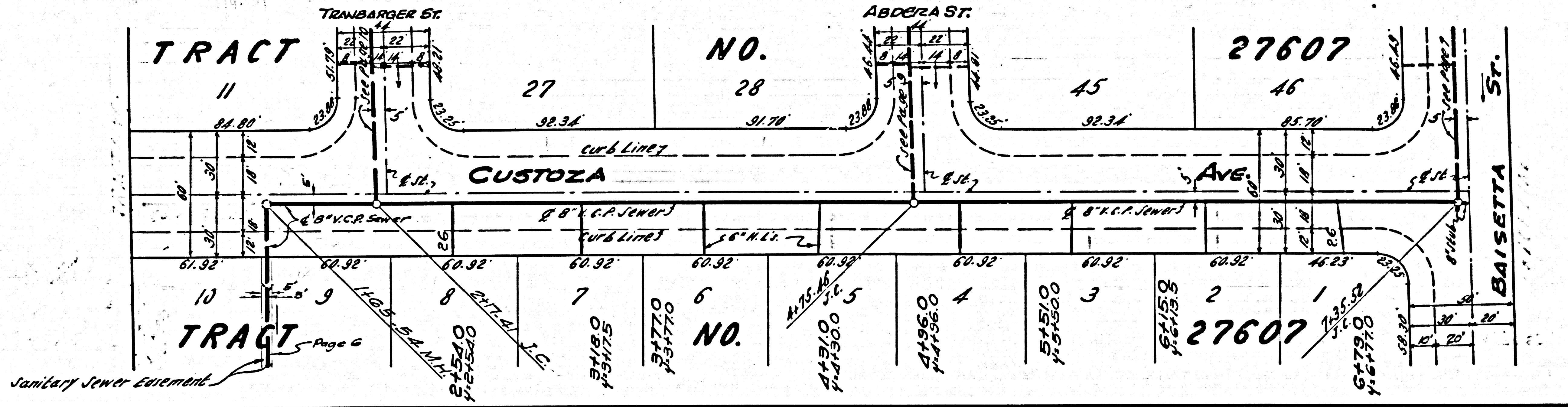
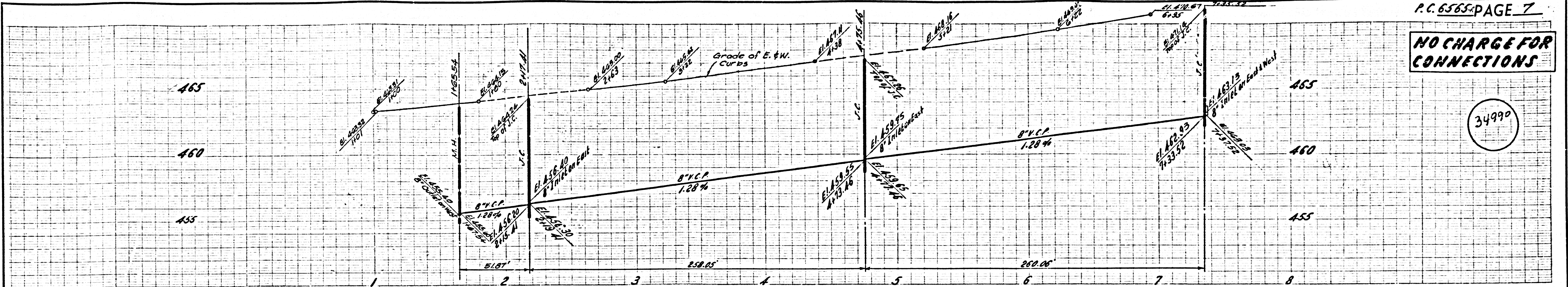
COLLECT CHARGES
AS INDICATED



C.F.

NO CHARGE FOR CONNECTIONS

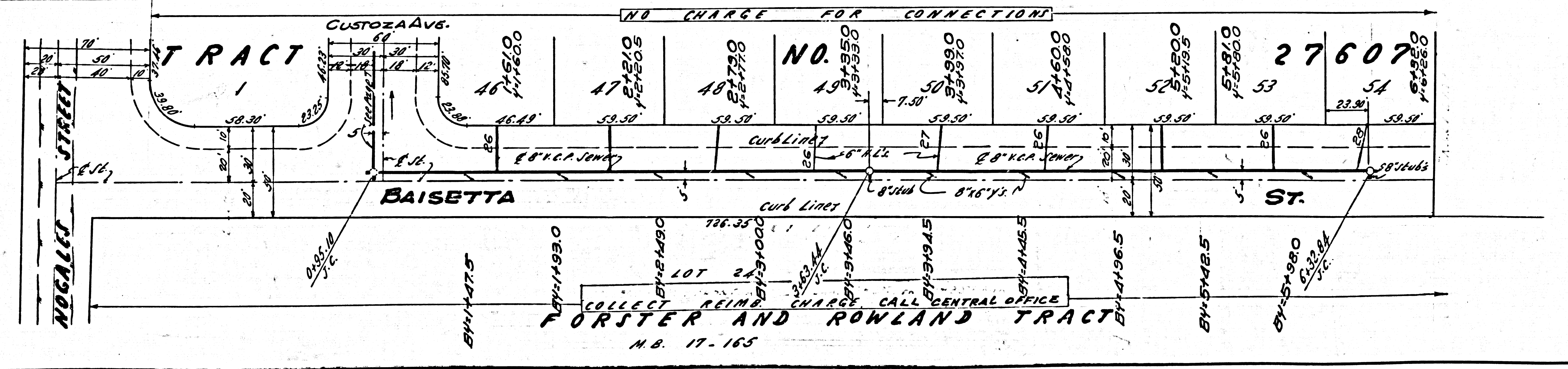
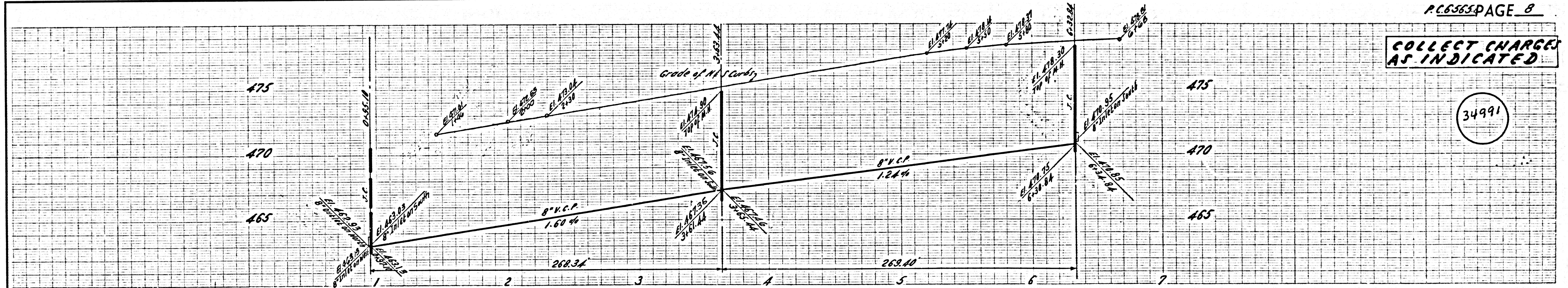
34990



Sanitary Sewer Elevation

COLLECT CHARGES AS INDICATED

34991



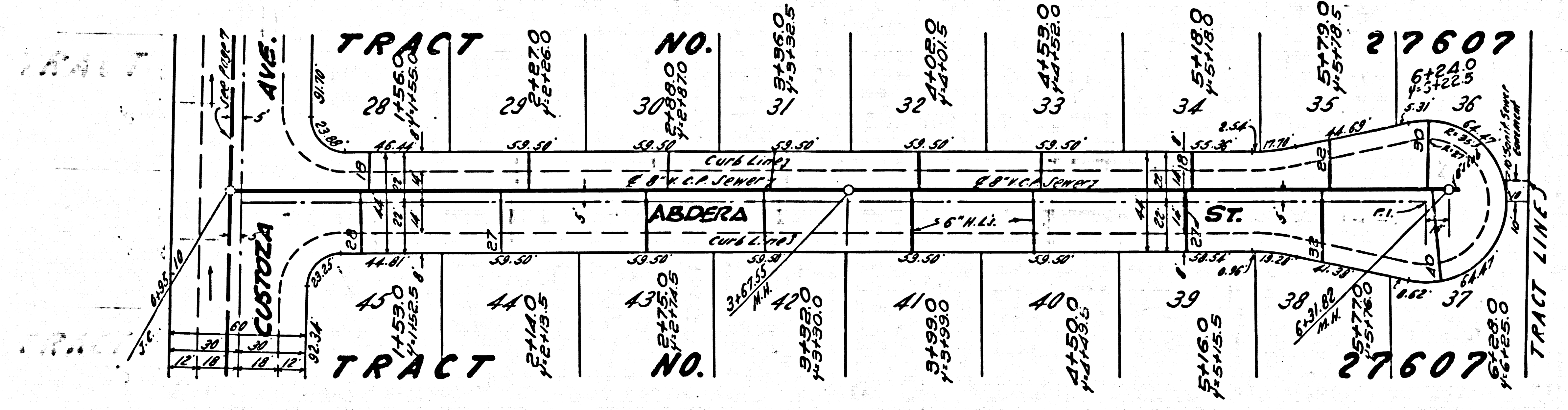
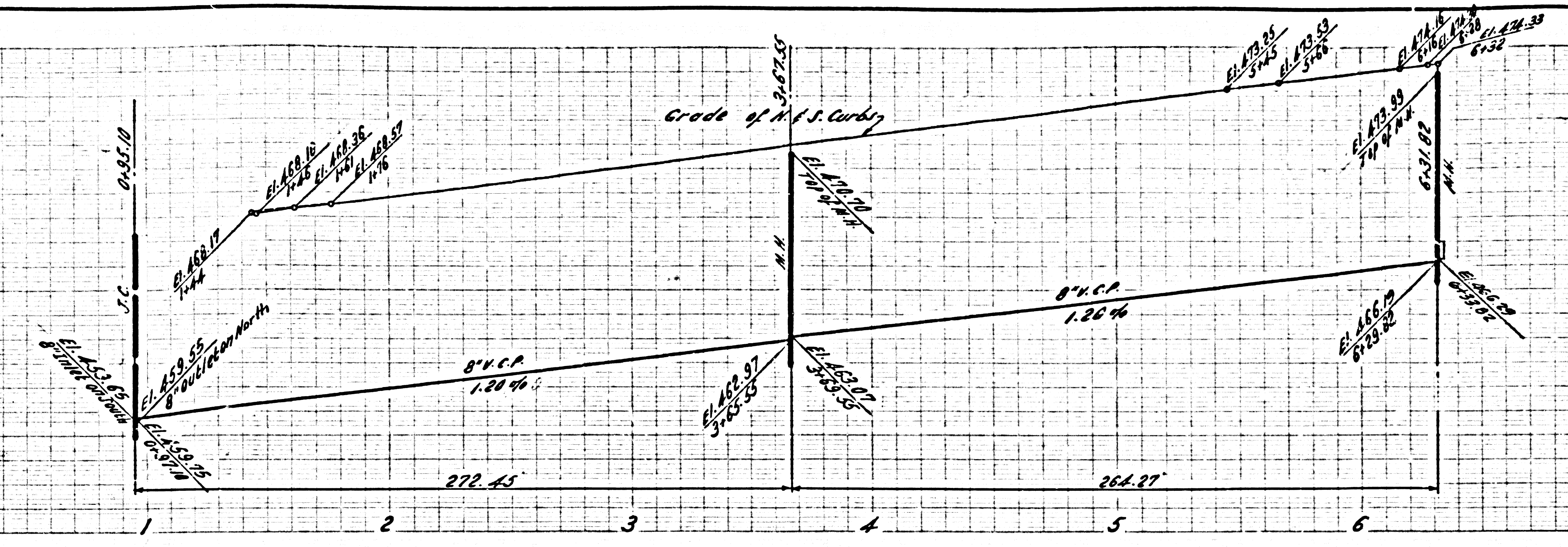
FORSTER AND ROWLAND TRACT
N.B. 17-165

NO CHARGE FOR CONNECTIONS

34992

470
465
460

470
465
460



NO CHARGE FOR CONNECTIONS

34993

465
460
455

465
460
455

