

B.M. SY. 6023 ELEV. 916.680

SET R.O.B.M. TAG N. C.B. 1° E. B.C.R. AT NE. COR. PALOS VERDES DR. E. E. GASILINA DR. 40° N. 55° E. 8 INT. PALOS VERDES QUAD. 1960

REVISION 12-26-63

Page 4 (a) Add 6' Chimneys at stations 4+106, 4+87, and 5+82 to serve lots 6, 7, 8, 9, 10, 11, 12, 13, 14, 15, 16, 17, 18, 19, 20, 21, 22, 23, 24, 25, 26, 27, 28, 29, 30, 31, 32, 33, 34, 35, 36, 37, 38, 39, 40, 41, 42, 43, 44, 45, 46, 47, 48, 49, 50, 51, 52, 53, 54, 55, 56, 57, 58, 59, 60, 61, 62, 63, 64, 65, 66, 67, 68, 69, 70, 71, 72, 73, 74, 75, 76, 77, 78, 79, 80, 81, 82, 83, 84, 85, 86, 87, 88, 89, 90, 91, 92, 93, 94, 95, 96, 97, 98, 99, 100 respectively.

(b) Construct additional M.I. to 41' 3" (c) Move M.I. for lot 65 to sta. 6+83

By *E. J. Ballou, Jr.*  
 Revision Approved: *Ralph Schaffer 2/5/64*  
 Office of County Engineer

REVISION

Page 2 (a) Revise alignment - Sta. 5+42.03 to Sta. 11+28.35

(b) Delete sewer beyond Sta. 11+28.35

(c) Revise grades and surface over sewer - Sta. 2+78.87 to Sta. 11+28.35

(d) Eliminate baffle boards and anchor blocks.

By *Ralph Schaffer*  
 APPROVED: *Ralph Schaffer 2/5/64*  
 OFFICE OF COUNTY ENGINEER

REVISIONS

PAGE 1 (a) Revise alignment - Sta. 5+42.03 to Sta. 11+28.35

(b) Delete sewer beyond Sta. 11+28.35

(c) Revise grades and surface over sewer - Sta. 2+78.87 to Sta. 11+28.35

(d) Eliminate baffle boards and anchor blocks.

PAGE 2 (a) Revise alignment - Sta. 5+42.03 to Sta. 11+28.35

(b) Delete sewer beyond Sta. 11+28.35

(c) Revise grades and surface over sewer - Sta. 2+78.87 to Sta. 11+28.35

(d) Eliminate baffle boards and anchor blocks.

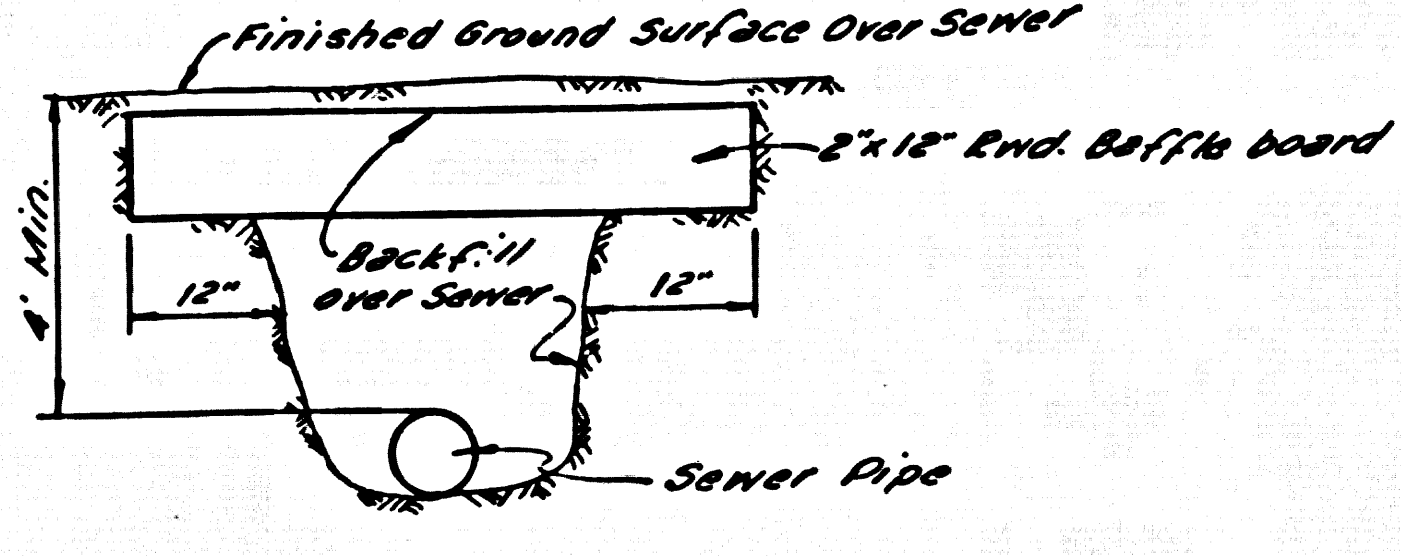
PAGE 3 (a) Revise alignment - Sta. 5+42.03 to Sta. 11+28.35

(b) Delete sewer beyond Sta. 11+28.35

(c) Revise grades and surface over sewer - Sta. 2+78.87 to Sta. 11+28.35

(d) Eliminate baffle boards and anchor blocks.

By *E. J. Ballou, Jr.*  
 Revision Approved: *Ralph Schaffer 2/5/64*  
 Office of County Engineer



BAFFLE BOARD DETAIL  
(NO SCALE)

- NOTES:
- Each end of baffle board will extend one foot into undisturbed ground.
  - The upper layer of backfill to be one foot minimum of top soil. Top soil shall be tamped in place and planted with mustard and eye seed and adequately watered until growth is restored.
  - Baffle boards shall be spaced so that the top of the lower board shall be level with the bottom of the next higher board.

DOUBLE SCALE  
LOMITA BLDG. DIST. NO. 12

PROFILE ALIGNMENT AND GRADE OF  
SANITARY SEWERS PAGE 1

TO BE CONSTRUCTED IN  
TRACT NO. 27611  
AND  
TRACT NO. 28943  
(A RESUBDIVISION OF LOTS 76 TO 80, INCL., OF TRACT NO. 27611)  
PRIVATE CONTRACT NO. 6579

W.S. 27  
5 SHEETS, 9 PAGES

SCALE: VERT. 1"=4'  
HORIZ. 1"=40'

MARCH, 1963

PREPARED IN THE OFFICES OF  
MINTIRE & QUIROS INC.  
By *E. J. Ballou, Jr.*  
REG. C. E. NO. 40533

FOR LEGEND SEE PLAN NO. S-64

NOTE:

GRADES TO WHICH THE IMPROVEMENT IS TO BE CONSTRUCTED ARE SHOWN ON PLANS AND PROFILES. GRADE POINTS FOR TOP OF CURBS, CENTER LINE OF STREETS, OR CENTER LINE OF ALLEYS ARE SHOWN BY CIRCLES ON PROFILES. AT ALL POINTS BETWEEN DESIGNATED POINTS THE GRADE SHALL BE ESTABLISHED SO AS TO CONFORM TO A STRAIGHT LINE DRAWN BETWEEN SAID DESIGNATED POINTS. ELEVATIONS ARE IN FEET ABOVE U.S.C. & G.S. SEA LEVEL DATUM OF 1929.

THIS DRAWING AND THE DATA HEREON ARE HEREBY MADE A PART OF THE SPECIFICATIONS. WORK SHALL BE CONSTRUCTED ACCORDING TO STANDARD SPECIFICATIONS DATED, MAY, 22, 1962, ON FILE IN THE OFFICE OF THE COUNTY ENGINEER AND SHALL BE PROSECUTED ONLY IN THE PRESENCE OF THE COUNTY ENGINEER.

BEFORE WORK CAN BE STARTED, THE CONTRACTOR MUST OBTAIN A PERMIT TO EXCAVATE IN COUNTY STREETS FROM THE L.A. COUNTY ROAD DEPT., DISTRICT OFFICE NO. 3, AND PAY A FEE TO THE COUNTY ENGINEER, ROOM 300, COUNTY ENGINEERING BUILDING, 108 WEST SECOND STREET OR PALMS VERDES, CANTON, CALIF. ... REGIONAL OFFICE, SUFFICIENT TO COVER THE COST OF CONSTRUCTION INSPECTION AND RECORD PLANS.

APPROVAL OF THIS PLAN BY THE COUNTY OF LOS ANGELES DOES NOT CONSTITUTE A REPRESENTATION AS TO THE ACCURACY OF THE LOCATION OR OF THE EXISTENCE OR NON-EXISTENCE OF ANY UNDERGROUND UTILITY PIPE, OR STRUCTURE WITHIN THE LIMITS OF THIS PROJECT. THIS NOTE APPLIES TO ALL PAGES.

IF WORK IS TO BE DONE IN A STATE HIGHWAY, A PERMIT MUST BE OBTAINED FROM THE STATE OF CALIFORNIA, DIVISION OF HIGHWAYS, 126 SOUTH SPRING STREET, LOS ANGELES, CALIFORNIA.

COUNTY OF LOS ANGELES, CALIFORNIA

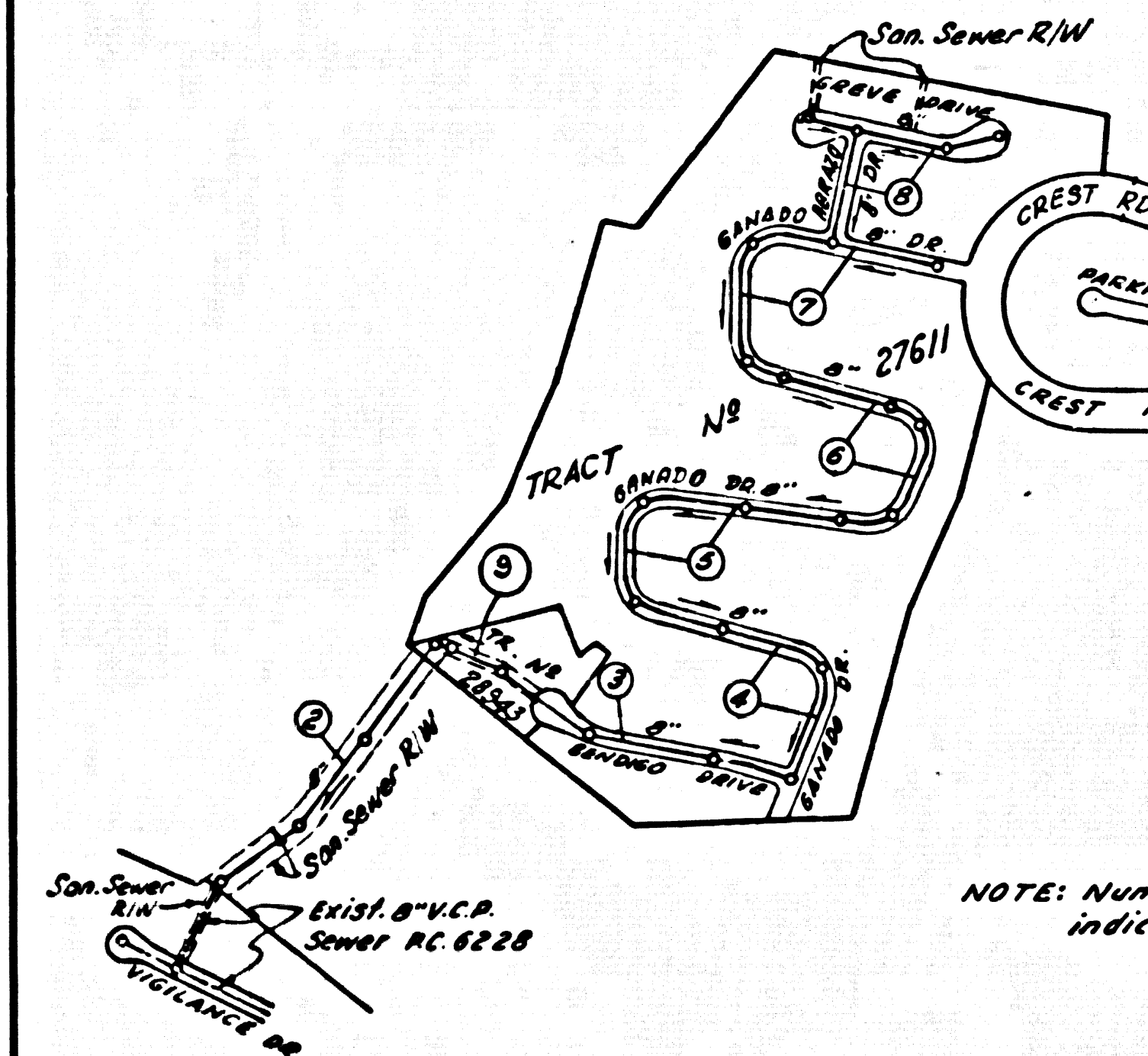
JOHN A. LAMBIE, COUNTY ENGINEER J. D. PARKHURST, CHIEF ENGINEER

APPROVED BY *Ralph Schaffer* ASSISTANT SANITATION ENGINEER APPROVED BY *J. D. Parkhurst* OFFICE ENGINEER

SUBMITTED BY *Ralph Schaffer* REGIONAL ENGINEER

CHECKED BY *John D. Parkhurst* REG. C. E. NO. 25012

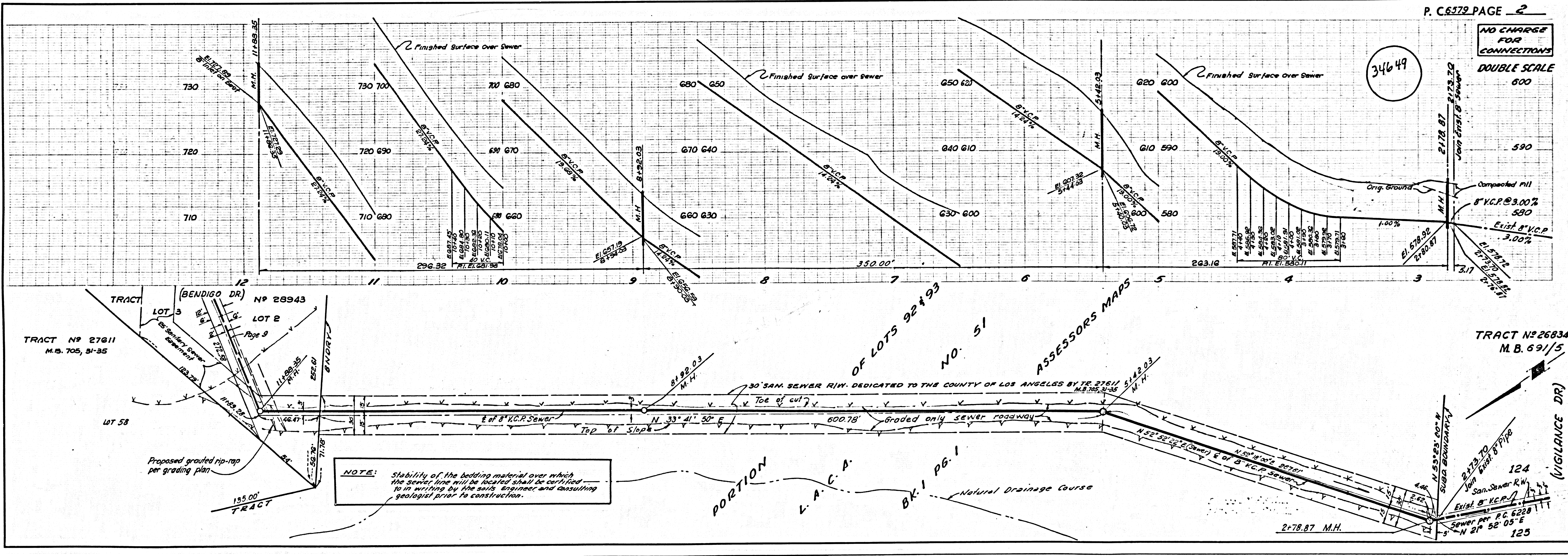
J.N. 036040



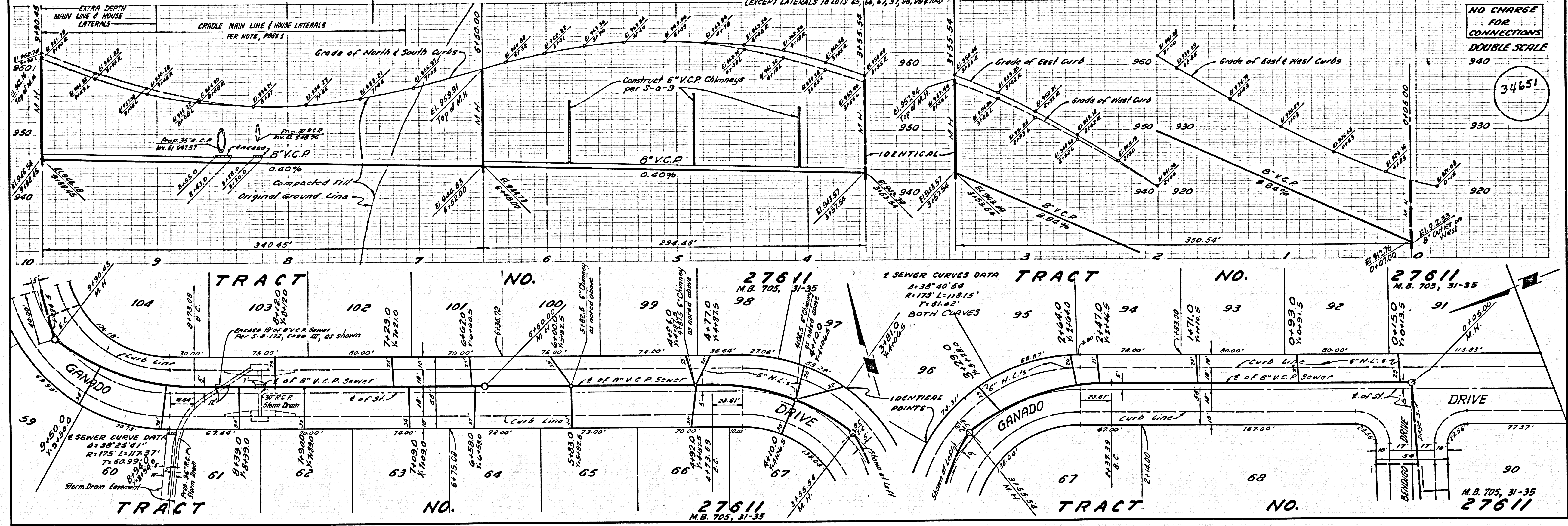
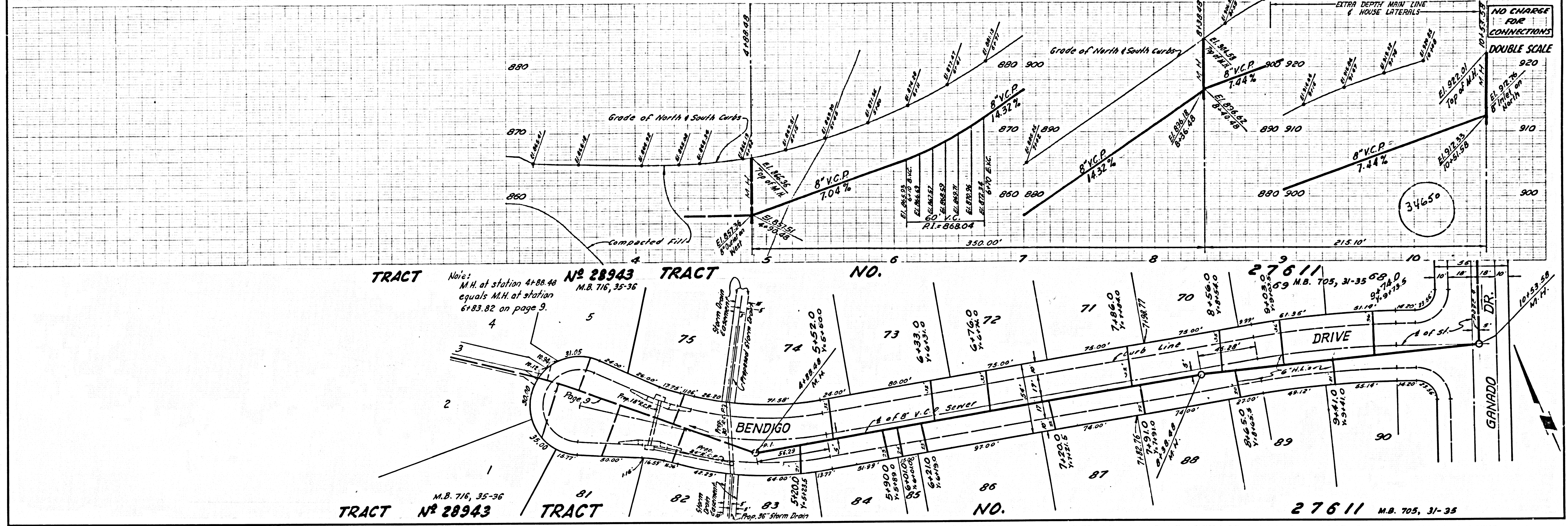
INDEX MAP  
TRACT NO. 27611 & 28943  
P.C. 6579  
Scale: 1"=600'

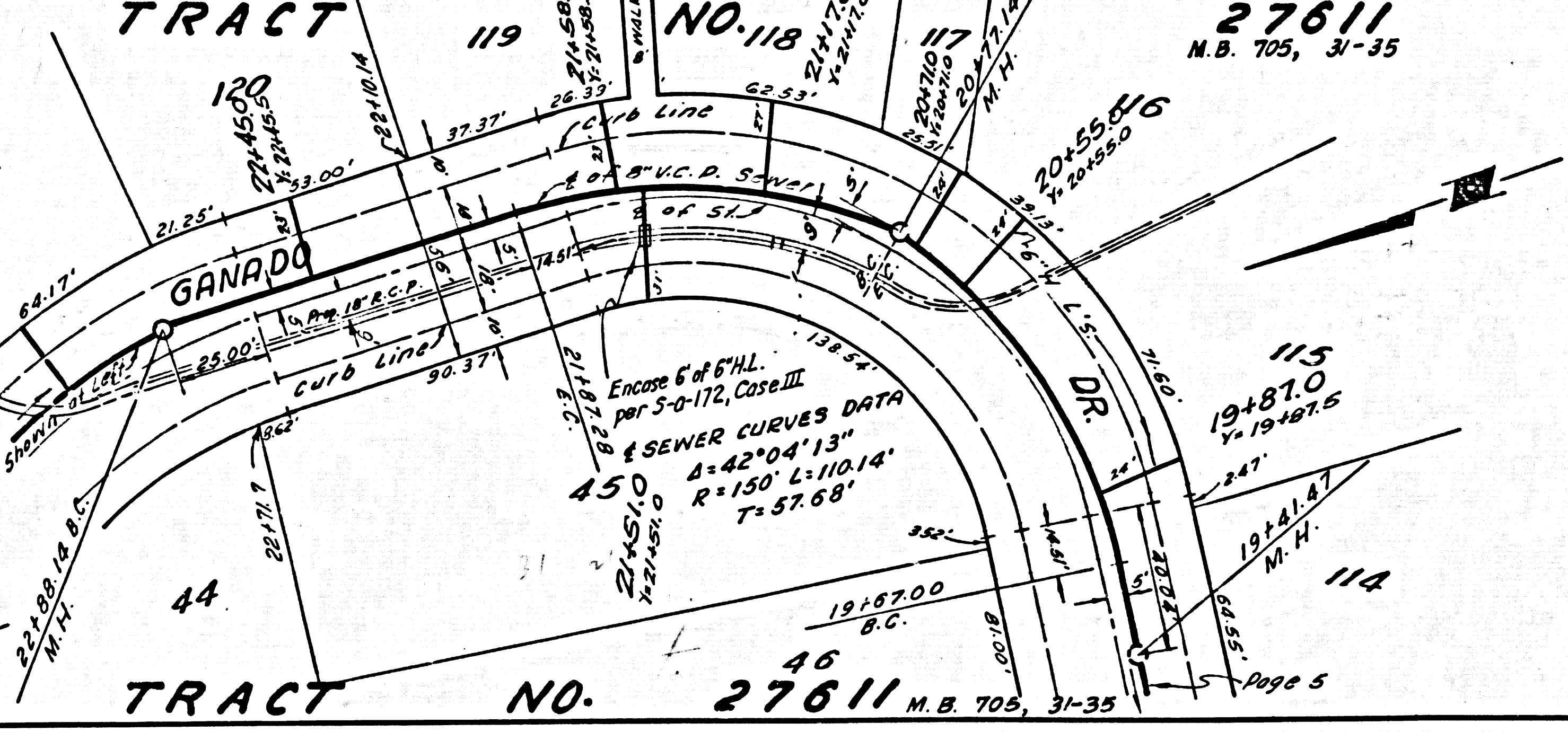
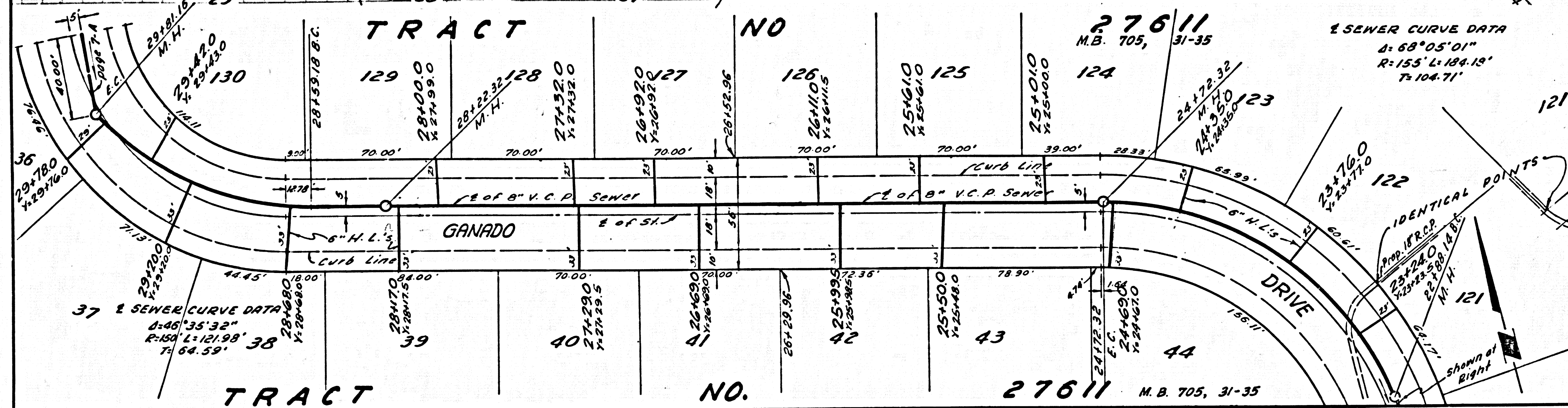
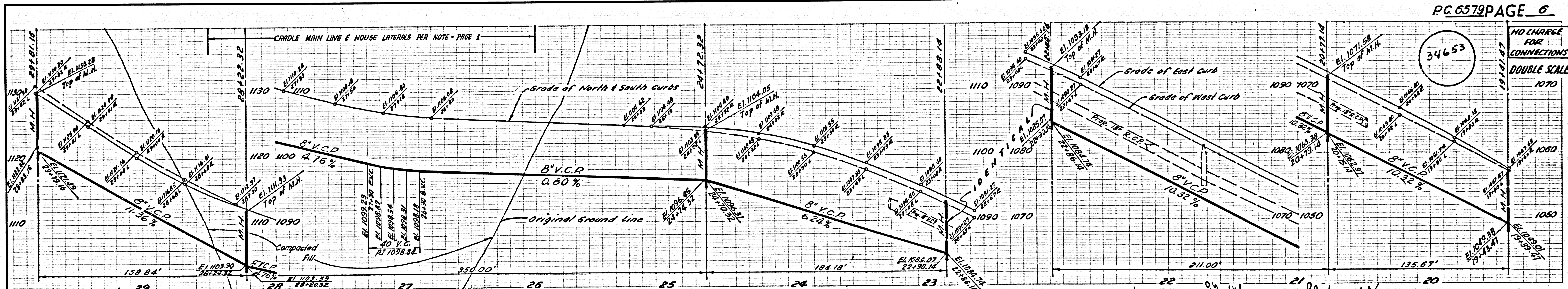
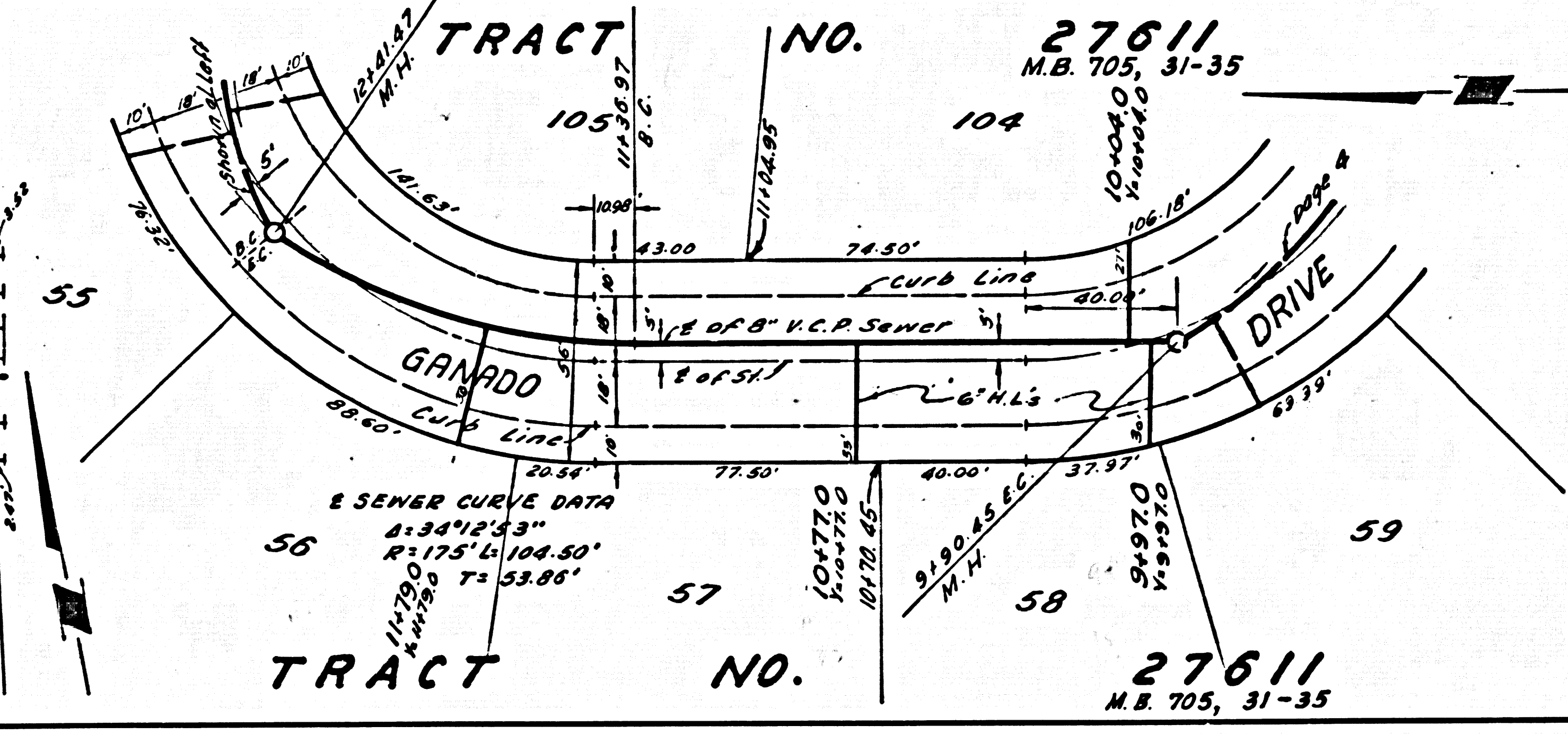
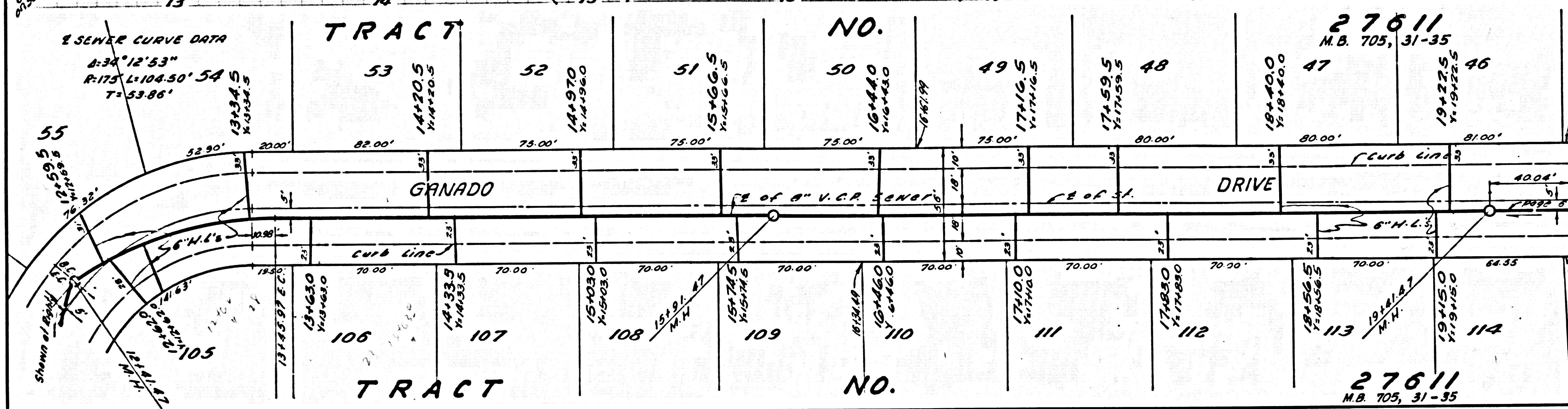
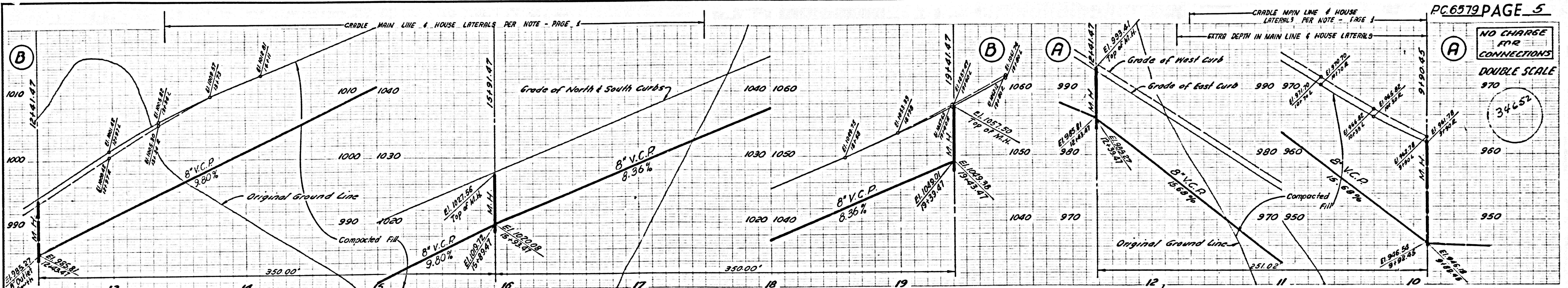
COLLECT CHARGES  
AS INDICATED  
*Ralph Schaffer*

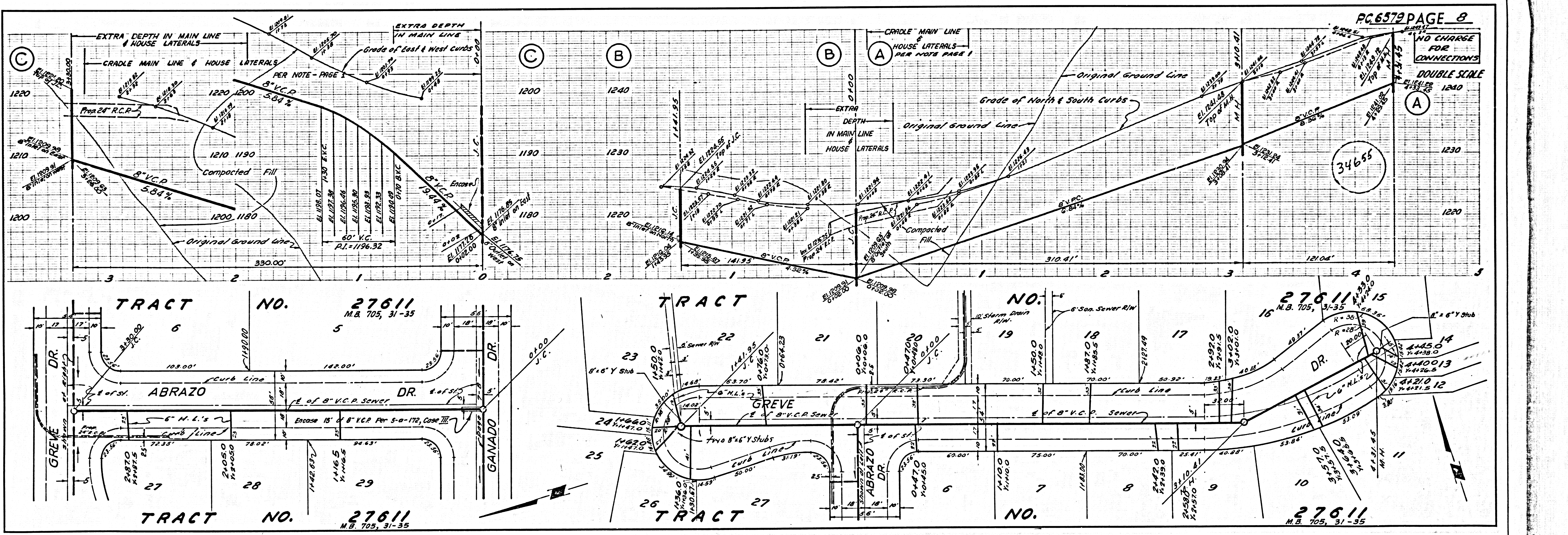
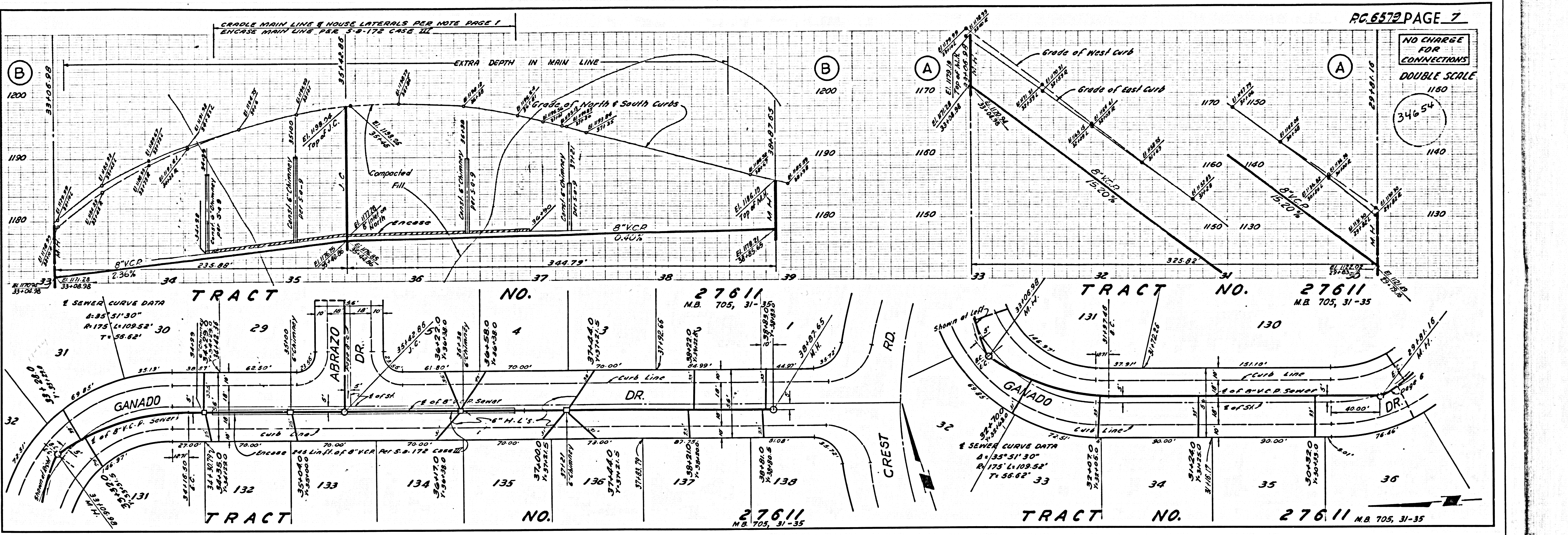
NO CONNECTIONS FOR THE DISPOSAL OF INDUSTRIAL WASTES SHALL BE MADE TO SEWERS SHOWN ON THESE DRAWINGS WITHOUT WRITTEN PERMISSION FROM THE CHIEF ENGINEER AND GENERAL MANAGER OF THE COUNTY SANITATION DISTRICTS.



NOTE: Stability of the bedding material over which the sewer line will be located shall be certified to in writing by the soils engineer and consulting geologist prior to construction.



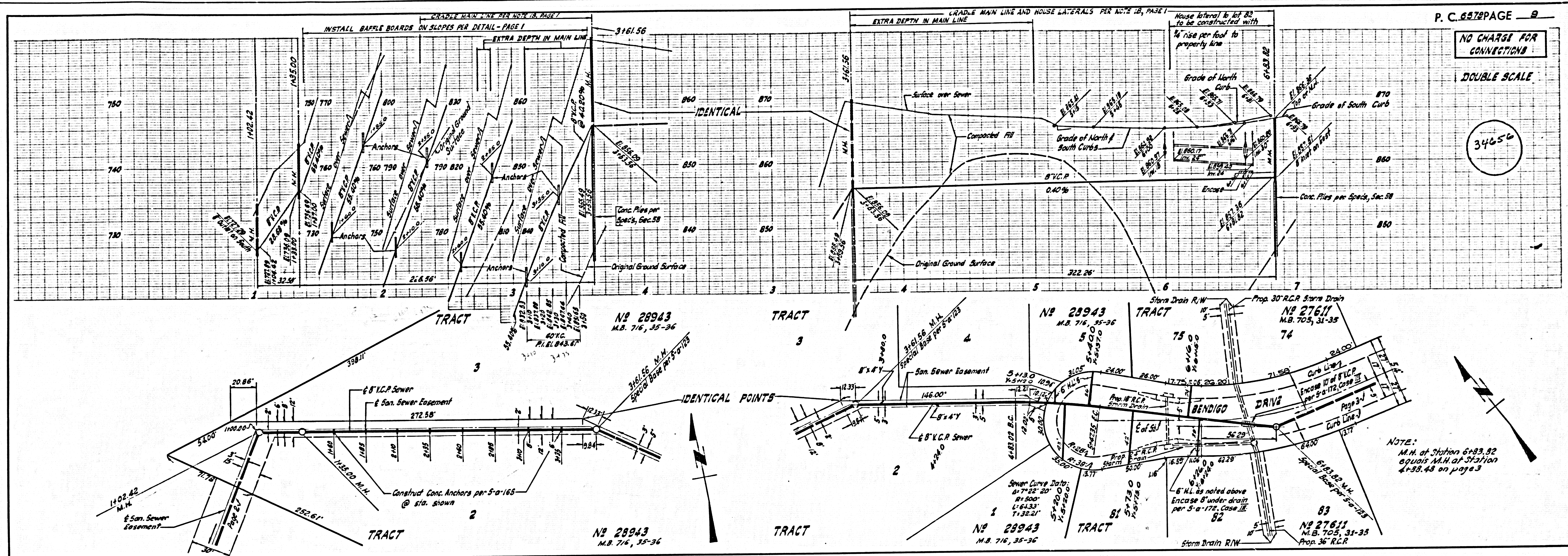




NO CHARGE FOR CONNECTIONS

DOUBLE SCALE

34650



27 17 11 8 1/2 8 1/2 11 22