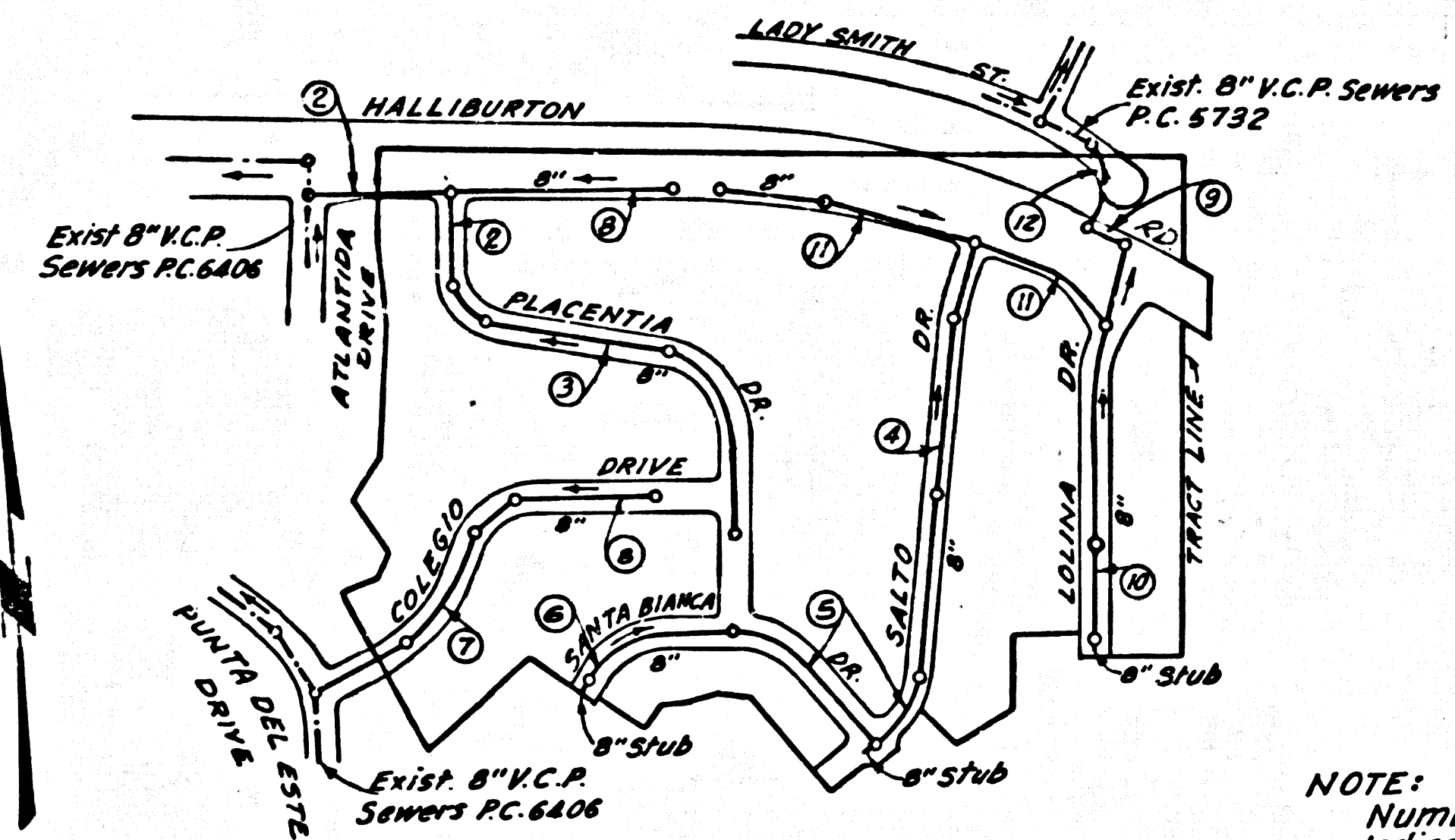


B.M. S.G. 1623-A ELEV. 405.237'
 R.D. B.M. Tag in North Curb 1' East of
 B.C.R. of N.E. Corner of Hacienda Blvd
 & Halliburton Road 40'± & 72'± East
 of Inter. (Base Line)
 QUAD. 1955 Adj.



INDEX MAP
 TRACT No. 27173
 SCALE: 1" = 400'
 P.C. 6592

THE PRIVATE ENGINEER SHALL BE RESPONSIBLE FOR THE CONSTRUCTION OF HOUSE LATERALS AT PROPER LOCATIONS SO THAT ALL LOTS WILL BE ADEQUATELY SERVED

DOUBLE SCALE
 PUENTE BLDG. DIST. NO. 2

PROFILE ALIGNMENT AND GRADE OF
 SANITARY SEWERS PAGE 1
 TO BE CONSTRUCTED IN

TRACT NO. 27173
 PRIVATE CONTRACT NO. 6592

W.S. 38
 6 SHEETS, 12 PAGES
 SCALE: VERT. 1" = 4'
 HORIZ. 1" = 40'
 APR. 1963
 PREPARED IN THE OFFICES OF
AMCO ENGINEERS INC.
 2100 N. Hollywood Blvd.
 Los Angeles, California
 J. GEORGE ARAUJO REG. C.E. NO. 11467
 APR. 18-63
 FOR LEGEND SEE PLAN NO. 5-64

33893

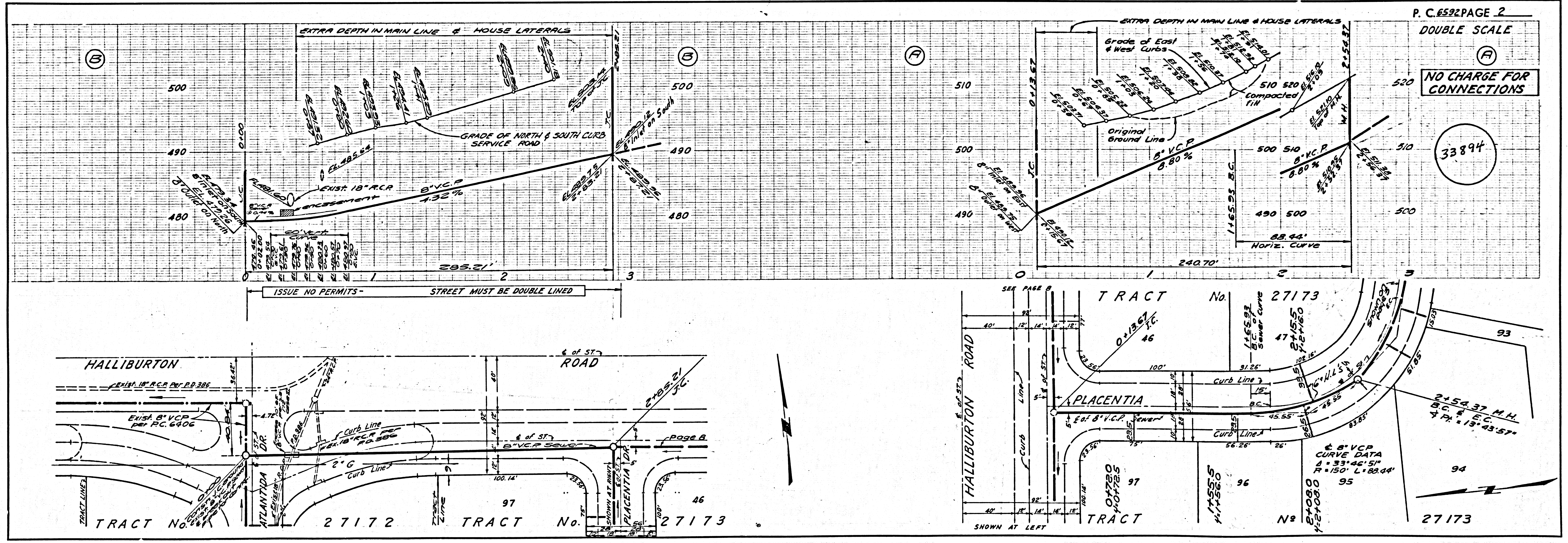
- NOTES:
1. PROVIDE STAKES ON THE PROPERTY LINE OR PROPERTY LINES PRODUCED AT RIGHT ANGLES TO THE SEWER LINE AT THE CENTER LINE OF EACH MANHOLE.
 2. NO REPRESENTATIVE OF THE COUNTY ENGINEER WILL SURVEY OR LAY OUT ANY PORTION OF THE WORK.
 3. THE PRIVATE ENGINEER SHALL FURNISH THE COUNTY ENGINEER WITH GRADE SHEETS AND STATIONING FOR ALL HOUSE LATERALS AND Y BRANCHES AND SHALL PROVIDE STAKES FOR THEM AT THEIR PROPER LOCATIONS WITH STATIONING PLAINLY MARKED. ALL HOUSE LATERALS SHALL BE CONSTRUCTED IN A STRAIGHT ALIGNMENT AT RIGHT ANGLES FROM THE MAIN LINE SEWER EXCEPT AS SHOWN ON THE PLANS. HOUSE LATERALS FROM CHIMNEYS SHALL NOT HAVE AN ANGLE OF LESS THAN 45° WITH THE MAIN LINE SEWER. ANY CHANGE IN ALIGNMENT SHALL BE REQUESTED BY WRITING BY THE PRIVATE ENGINEER.
 4. THE PRIVATE ENGINEER SHALL FURNISH THE HOUSE LATERAL DEPTH AT THE PROPERTY LINE BELOW THE TOP OF CURB ELEVATION FOR EACH HOUSE LATERAL ON THE GRADE SHEET.
 5. NO REVISIONS SHALL BE MADE IN THESE PLANS WITHOUT THE APPROVAL OF THE COUNTY ENGINEER.
 6. THE CONTRACTOR SHALL NOTIFY THE CONSTRUCTION DIVISION BY TELEPHONE, MADISON 9-4747, EXT. 8151, AT LEAST TWENTY-FOUR HOURS BEFORE STARTING ANY WORK UNDER THIS CONTRACT.
 7. MANHOLES SHALL BE BRICK SEWER STRUCTURES PER S-104. PRECAST CONCRETE MANHOLES PER S-135 OR S-173 MAY BE USED AS AN ALTERNATE IN LOCATIONS APPROVED BY THE COUNTY ENGINEER.
 8. USE STANDARD MANHOLE FRAMES AND COVERS, S-107.
 9. MANHOLE TOPS IN UNIMPROVED RIGHTS-OF-WAY TO BE SIX INCHES ABOVE FINISHED GRADE.
 10. USE EXTRA STRENGTH PIPE. ALL PIPE IS STANDARD DEPTH EXCEPT AS NOTED.
 11. USE MECHANICAL COMPRESSION JOINTS FOR ALL V.C.P. JOINTS PER SPEC. S, SECS. 36, 40 & 49.
 12. IF A POWER POLE IS WITHIN THREE FEET OF THE SEWER, THE SEWER SHALL BE ENCASED, PER S-172, CASE II, TWO FEET ON EITHER SIDE FROM THE POINT OF INTERFERENCE.
 13. IF DURING THE COURSE OF CONSTRUCTION IT IS DETERMINED THAT THERE IS LESS THAN FOUR FEET OF COVER OVER THE TOP OF A MAIN LINE OR HOUSE LATERAL V.C.P. SEWER WHICH IS NOT INDICATED ON THE PLANS, THE PIPE SHALL BE ENCASED PER S-173, CASE III, UNLESS OTHERWISE APPROVED BY THE COUNTY ENGINEER.
 14. HOUSE LATERALS TO BE CONSTRUCTED WITH INVERTS AT PROPERTY LINE... 6... FEET BELOW CURB GRADE EXCEPT AS NOTED.
 15. RESURFACE ALL TRENCHES WITHIN PAVED AREAS TO MEET L.A. COUNTY ROAD DEPT. OR CALIFORNIA STATE HIGHWAY REQUIREMENTS IN ACCORDANCE WITH PERMITS.
 16. FOR ALLOWABLE LEAKAGE TEST USE FORMULA NO. 2, SPECS. SEC. 54.
 17. STANDARD SPECIFICATIONS DATED MAY 25, 1958 SHALL APPLY IN THE CONSTRUCTION OF THIS PROJECT.
 18. SEWERS IN FILLED GROUND
 19. NO CONSTRUCTION WILL BE PERMITTED IN FILLED AREA UNLESS ACCEPTABLE CERTIFICATION IS SUBMITTED TO THE CONSTRUCTION DIVISION OF THE COUNTY ENGINEERS DEPARTMENT THAT RELATIVE COMPACTION IS GREATER THAN 80%.
 - a) IF COMPACTION IS LESS THAN 80% THE SEWER MUST BE ENCASED AS SHOWN IN THE PLANS PER S-104-106 OR A SPECIAL BASE COURSE PER S-8-179 CASE III, SPECIAL MANHOLE BASES MUST BE INSTALLED PER S-105 AS INDICATED ON THE PLANS.
 - b) IF COMPACTION IS GREATER THAN 80% NEITHER CASING NOR SPECIAL MANHOLES BASES WILL BE REQUIRED.
 20. ALL FILL TO BE IN PLACE BEFORE SEWERS ARE CONSTRUCTED.
 21. ALL STATE AND LOCAL TRENCH SAFETY ORDERS WILL BE RIGIDLY ENFORCED.

COLLECT CHARGES AS INDICATED

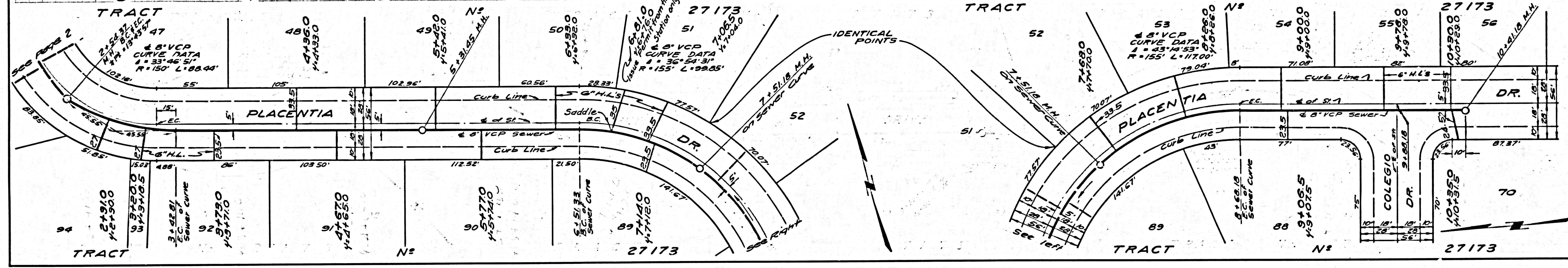
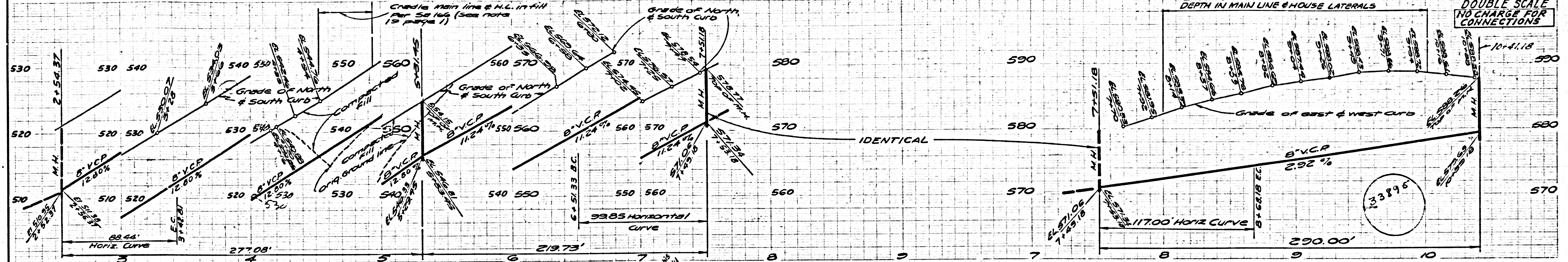
NO CONNECTIONS FOR THE DISPOSAL OF INDUSTRIAL WASTES SHALL BE MADE TO SEWERS SHOWN ON THESE DRAWINGS WITHOUT WRITTEN PERMISSION FROM THE CHIEF ENGINEER AND GENERAL MANAGER OF THE COUNTY SANITATION DISTRICTS

COUNTY OF LOS ANGELES, CALIFORNIA
 JOHN A. LAMBIE, COUNTY ENGINEER J. D. PARKHURST, CHIEF ENGINEER
 CO. SAN. DIST. NO. 21
 APPROVED BY: *[Signature]* ASSISTANT SANITATION ENGINEER APPROVED BY: *[Signature]* OFFICE ENGINEER
 SUBMITTED BY: *[Signature]* SANITATION ENGINEER
 CHECKED BY: *[Signature]* REG. C.E. NO. 11467
 REG. C.E. NO. 3464

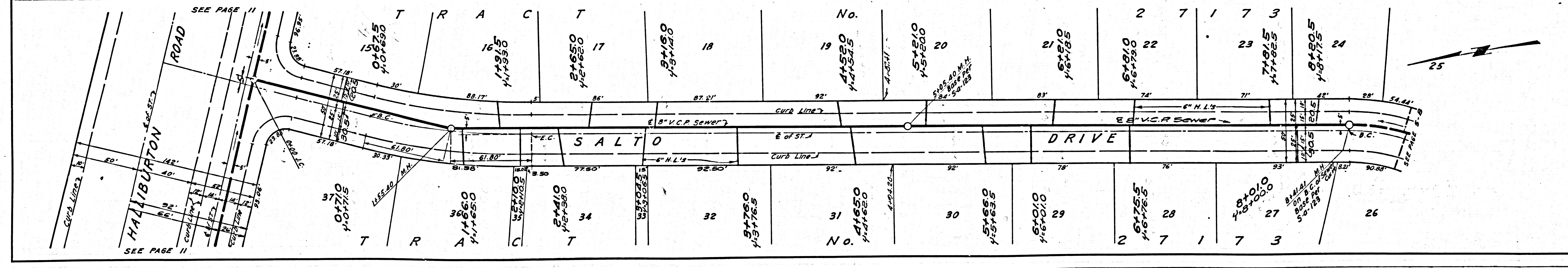
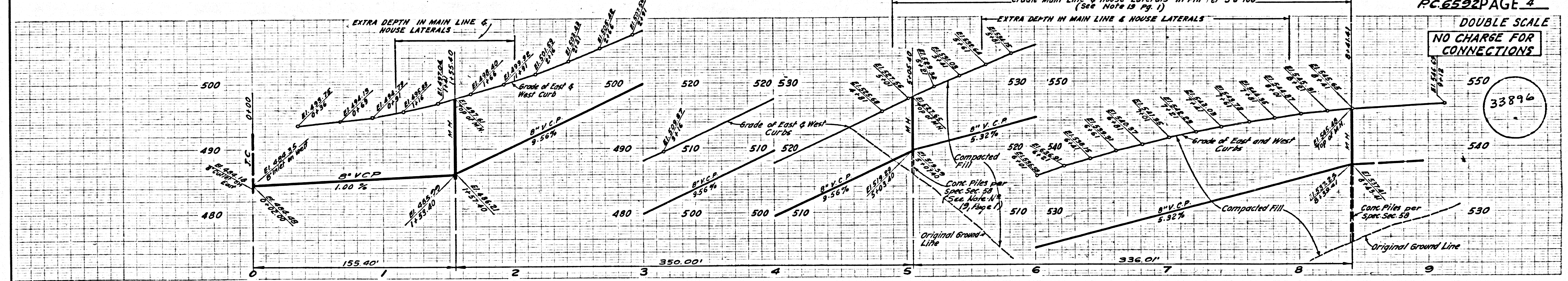
J.N. 0360.46



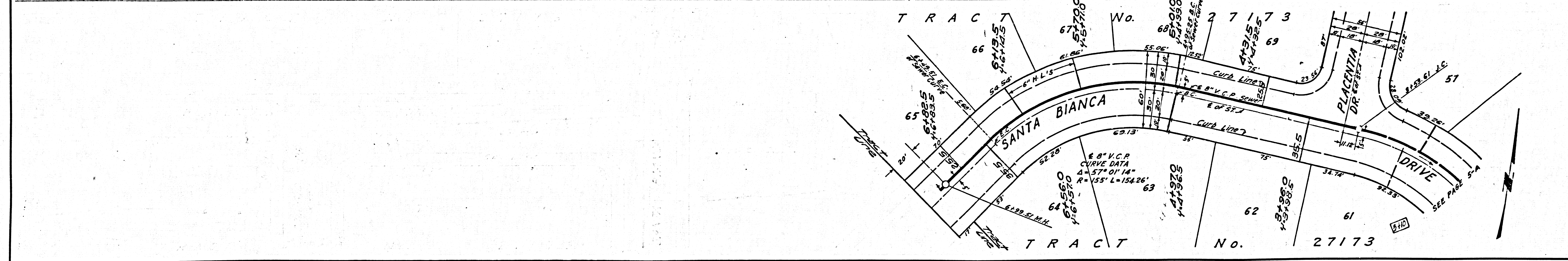
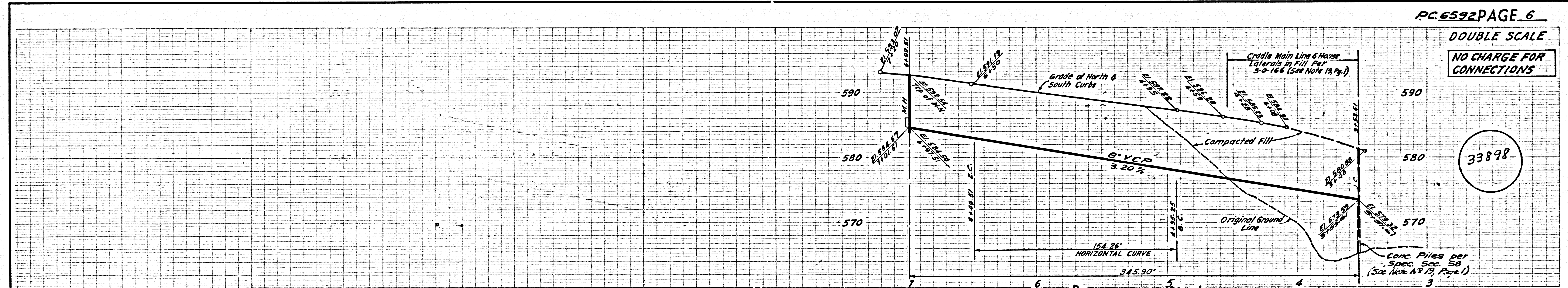
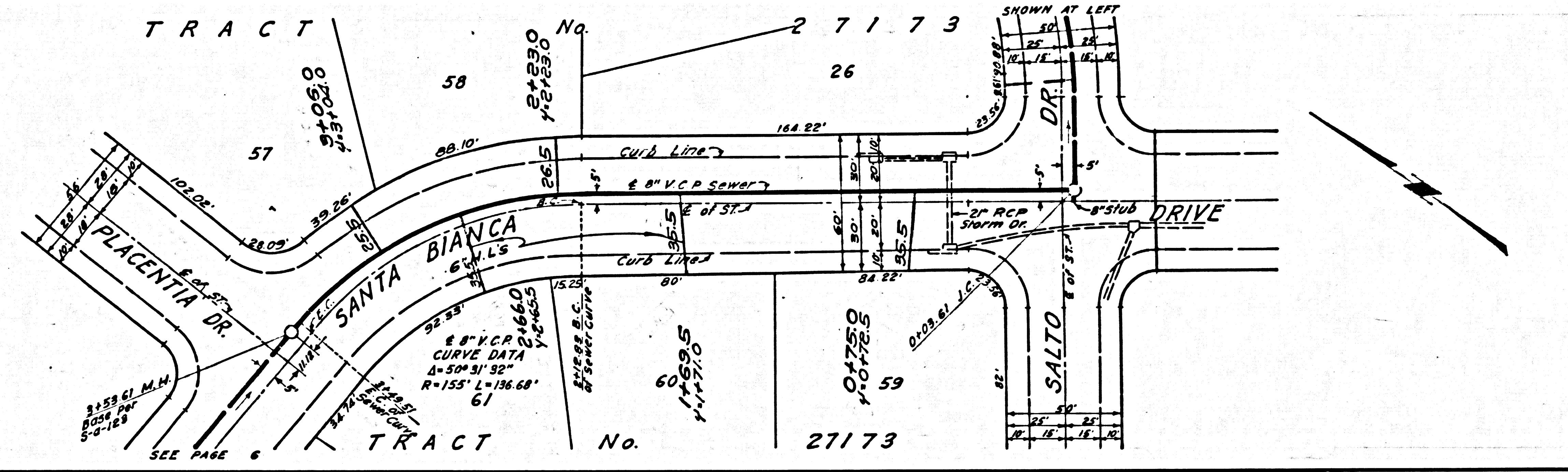
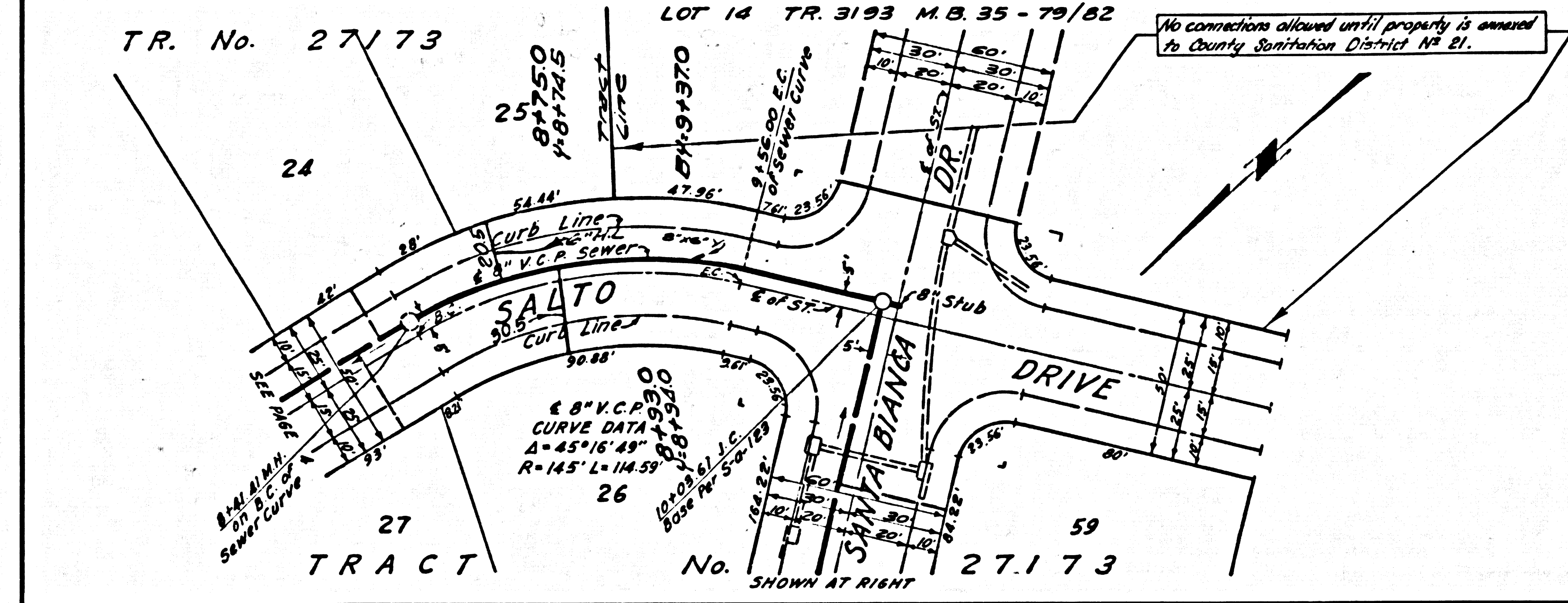
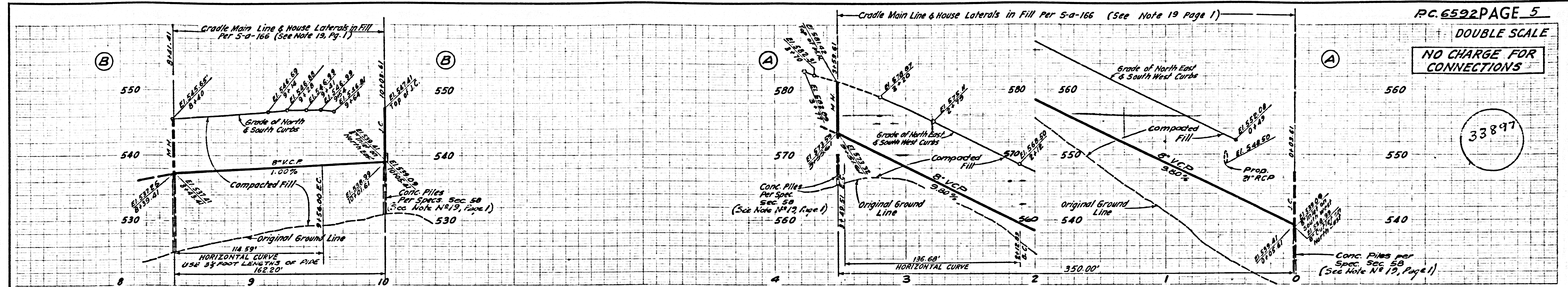
DOUBLE SCALE
NO CHARGE FOR
CONNECTIONS



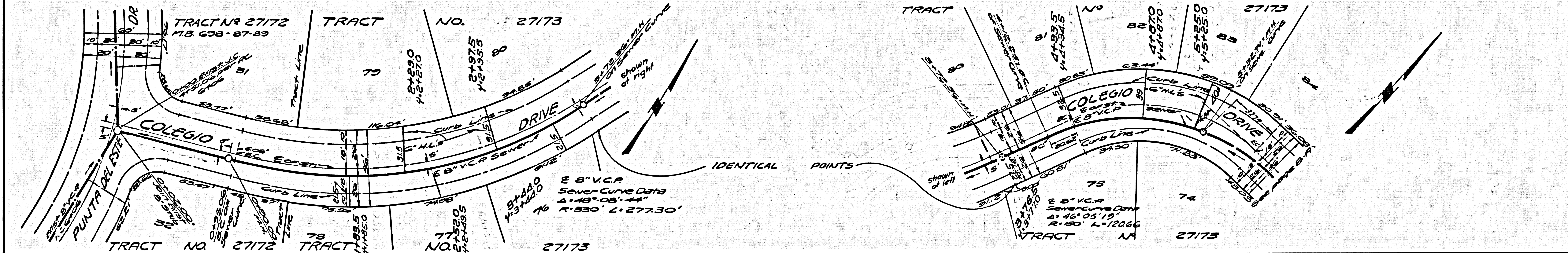
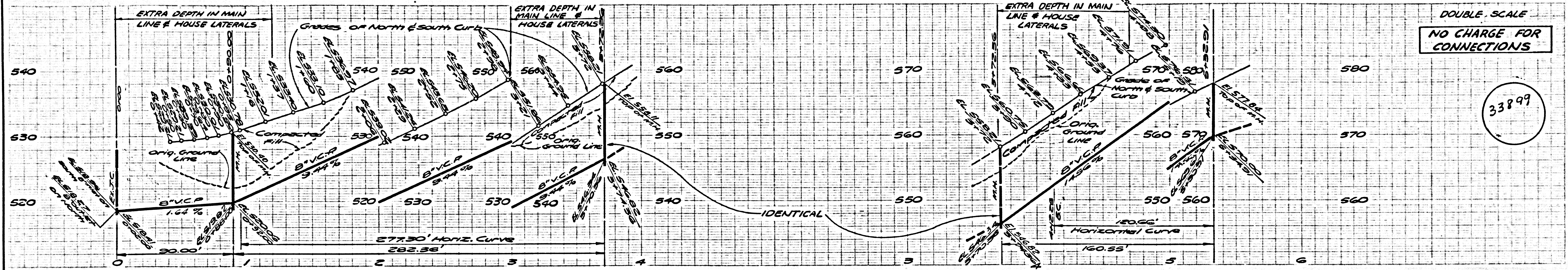
DOUBLE SCALE
NO CHARGE FOR
CONNECTIONS



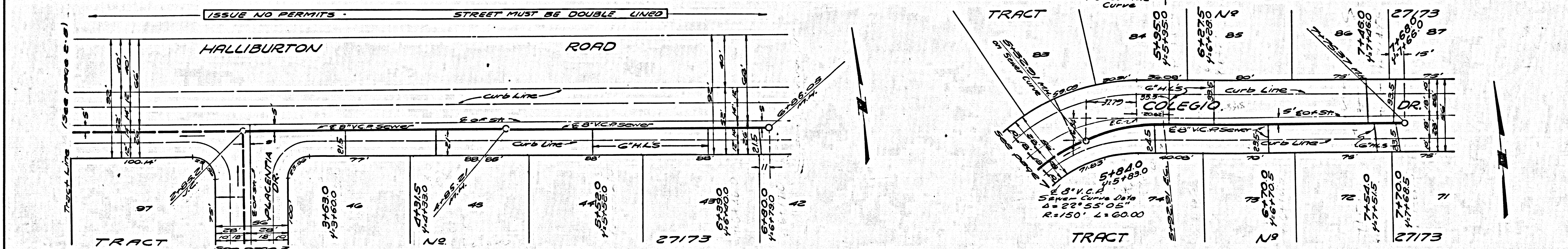
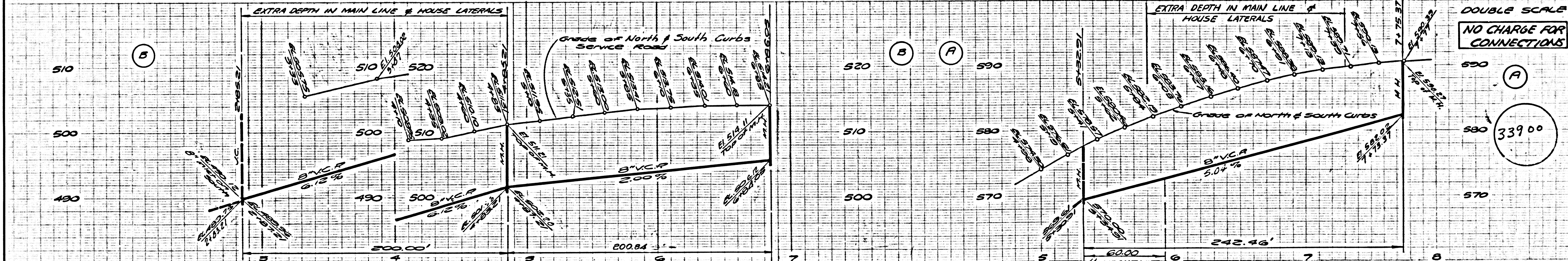
PC.6522



33899



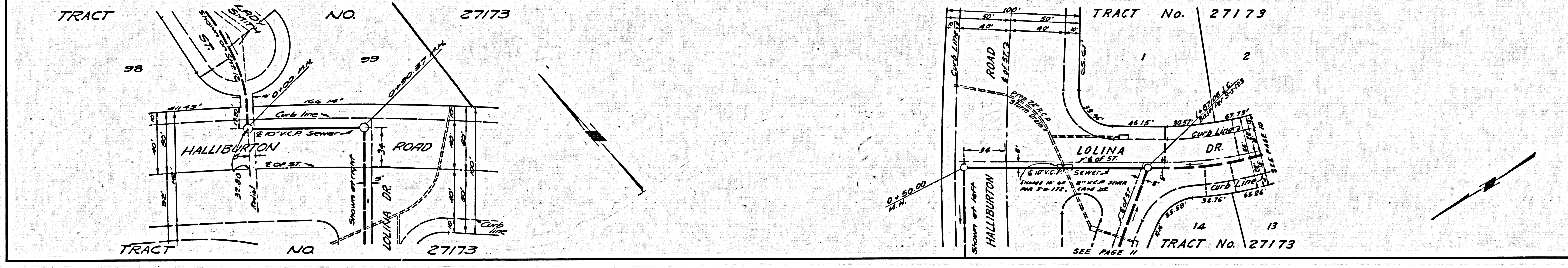
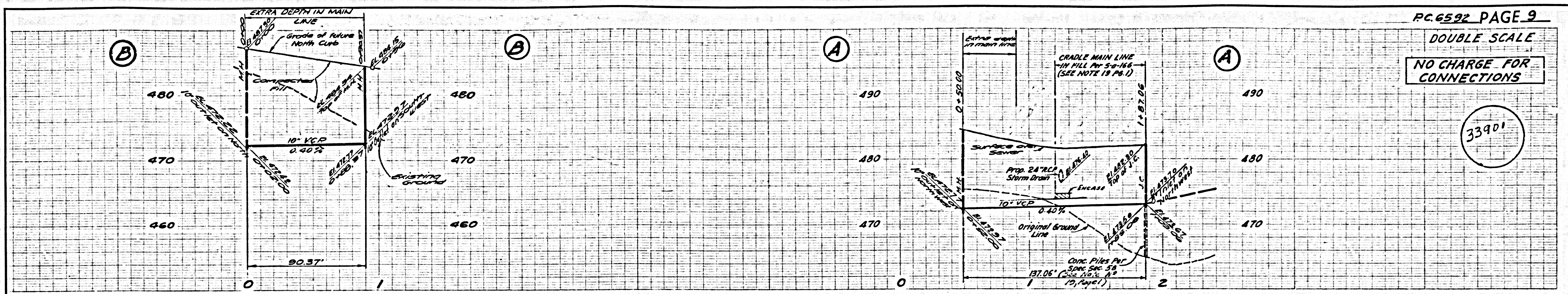
33900



DOUBLE SCALE

NO CHARGE FOR CONNECTIONS

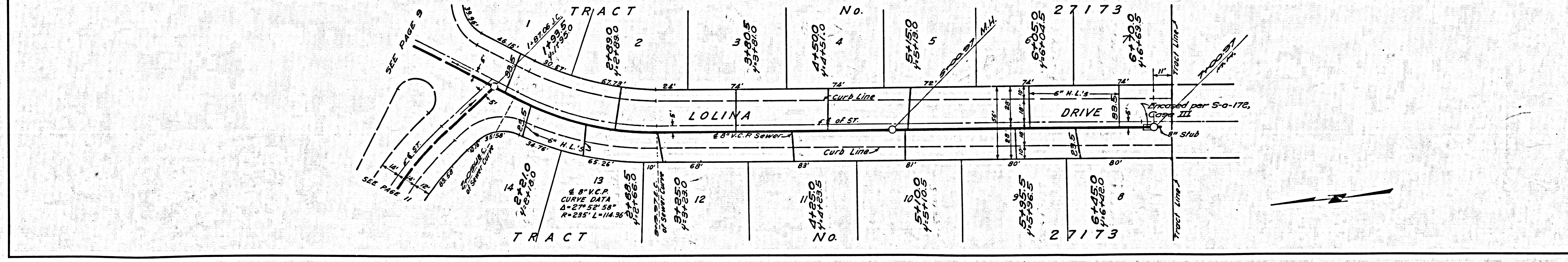
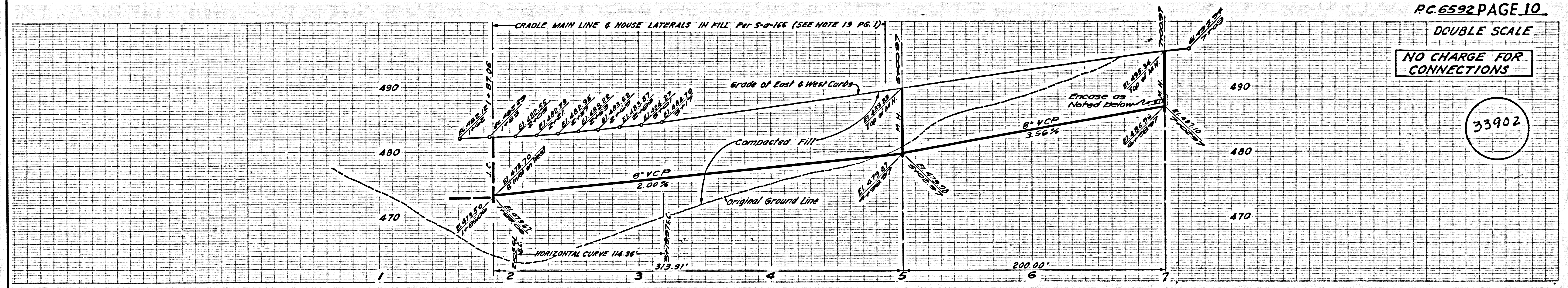
3390'



DOUBLE SCALE

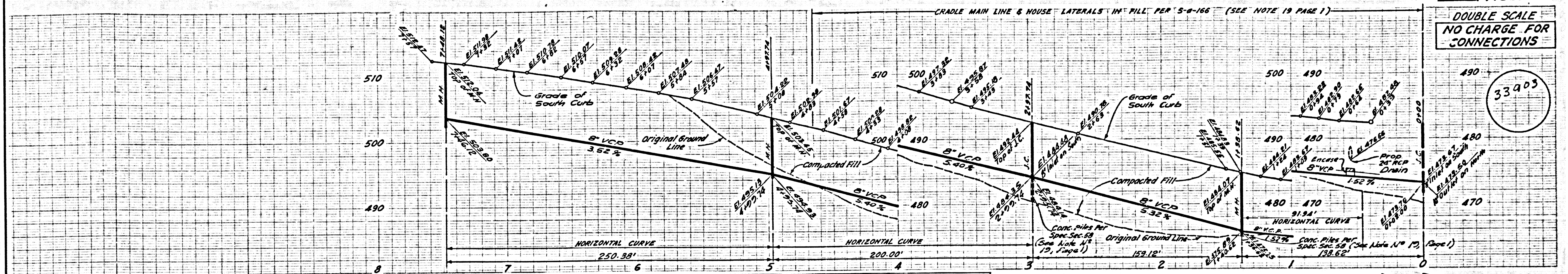
NO CHARGE FOR CONNECTIONS

33902

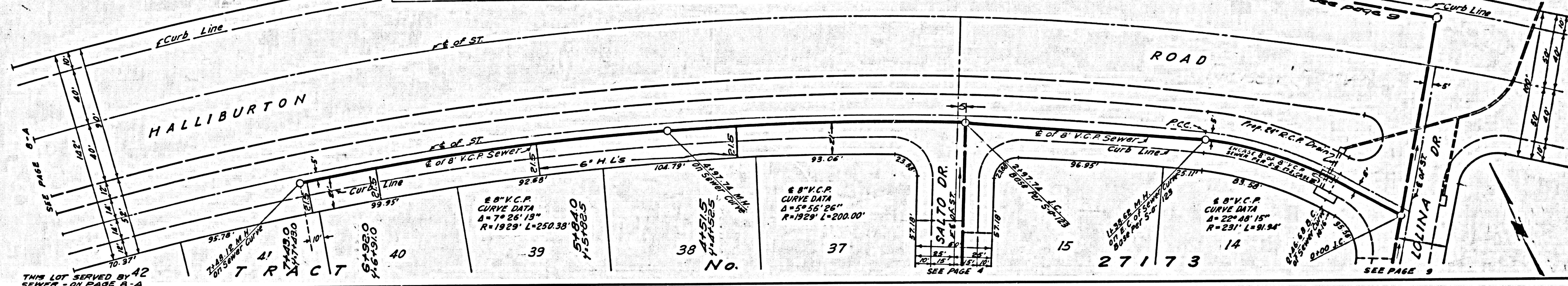


DOUBLE SCALE
NO CHARGE FOR CONNECTIONS

33903



ISSUE NO PERMITS - STREET MUST BE DOUBLE LINED



DOUBLE SCALE
NO CHARGE FOR CONNECTIONS

33904

