

DOUBLE SCALE
PUENTE BLDG. DIST. NO. 2

PROFILE ALIGNMENT AND GRADE OF
SANITARY SEWERS PAGE 1
TO BE CONSTRUCTED IN P.C. 6594
J.N. 0360.43

TRACT NO. 28140
PRIVATE CONTRACT NO. 6594

W.S. 39
13 SHEETS; 25 PAGES
SCALE: VERT. 1"=4'
HORIZ. 1"=40'
JULY, 1963
PREPARED IN THE OFFICES OF
WEACCO INC.
John H. O'Connell
REG. C. E. NO. 9915
FOR LEGEND SEE PLAN NO. S-A-61

36288

Bench Mark: S.G. 1930 Elev. 583.121
Fifth Ave. 25' E. of Brea Canyon Cut-off Road near
Center of main post 375' 10" N. of center of power
plant, 10' W. from Southeastern prolongation
of a barbed wire fence and 62' E. from fence
corner a station C.S. Mon. in handhole stamped
S.M. 447 1955 RE 63

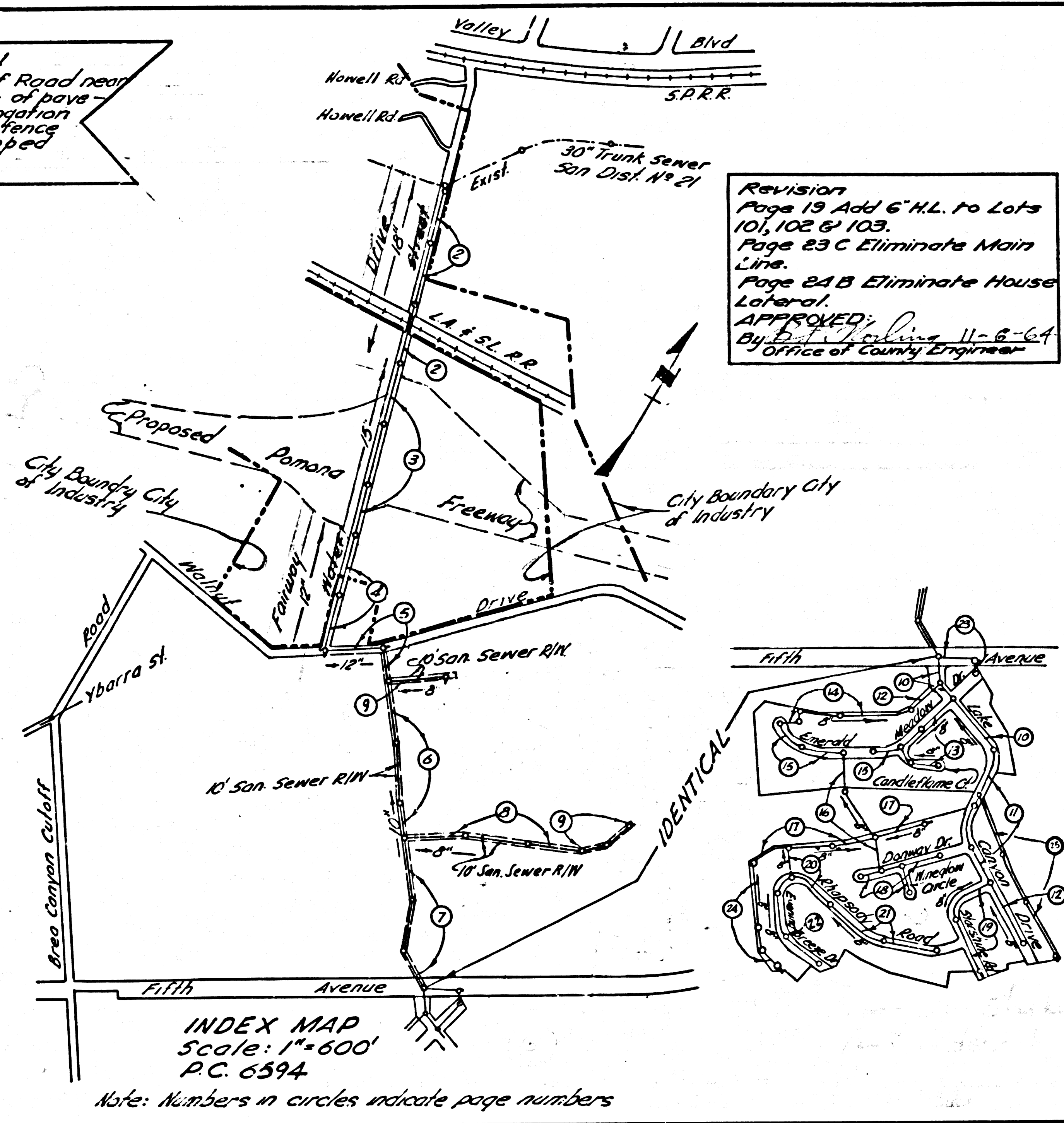
NO CONNECTIONS FOR THE DISPOSAL OF
INDUSTRIAL WASTES SHALL BE MADE TO
SEWERS SHOWN ON THESE DRAWINGS
WITHOUT WRITTEN PERMISSION FROM THE
CHIEF ENGINEER AND GENERAL MANAGER
OF THE COUNTY SANITATION DISTRICTS.

BEFORE BREAKING INTO ANY EXISTING STRUCTURE
AND BEFORE FINAL ACCEPTANCE OF THIS WORK,
COUNTY SANITATION DISTRICT (DU 41281) SHALL
BE NOTIFIED IN ORDER THAT REQUIRED INSPEC-
TION CAN BE MADE.

Fairway Drive
Note: 30" Gas Line in Water Street is high
pressure gas line (655 psi). Contractor to
notify So. Counties Gas Co. 24 hrs. prior
to excavation. Phone Brea, Jasper 9-2839

Approved Robert S. Roper
CITY MANAGER
CITY OF INDUSTRY
10-2-63

COLLECT CHARGES
AS INDICATED
D. L. Olson 9/23/63



Revision
Page 19 Add 6" H.L. to Lots
10, 10B & 10C
Page 23 C Eliminate Main
Line
Page 24 B Eliminate House
Lateral
APPROVED:
By [Signature] 11-6-64
Office of County Engineer

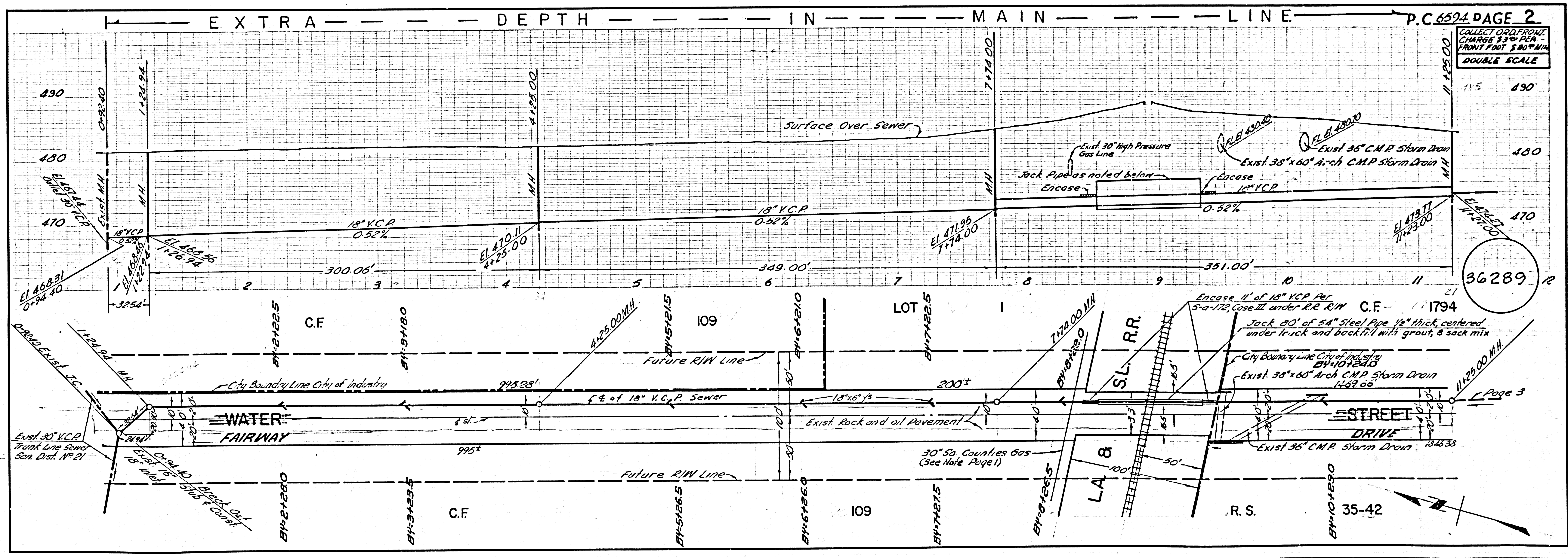
- NOTES:
1. PROVIDE STAKES ON THE PROPERTY LINE OR PROPERTY LINES PRODUCED AT RIGHT ANGLES TO THE SEWER LINE AT THE CENTER LINE OF EACH MANHOLE.
 2. NO REPRESENTATIVE OF THE COUNTY ENGINEER WILL SURVEY OR LAY OUT ANY PORTION OF THE WORK.
 3. IF DURING THE COURSE OF CONSTRUCTION IT IS DETERMINED THAT THERE IS LESS THAN FOUR FEET OF COVER OVER THE TOP OF A MAIN LINE OR HOUSE LATERAL VCP SEWER WHICH IS NOT INDICATED ON THE PLANS, THE PIPE SHALL BE ENCASED PER SAITZ CASE III UNLESS OTHERWISE APPROVED BY THE COUNTY ENGINEER.
 4. THE PRIVATE ENGINEER SHALL FURNISH THE HOUSE LATERAL DEPTH AT THE PROPERTY LINE BELOW THE TOP OF CURB ELEVATION FOR EACH HOUSE LATERAL ON THE GRADE SHEET.
 5. NO REVISIONS SHALL BE MADE IN THESE PLANS WITHOUT THE APPROVAL OF THE COUNTY ENGINEER.
 6. USE STANDARD MANHOLE FRAMES AND COVERS, S-117.
 7. USE EXTRA STRENGTH PIPE, ALL PIPE STANDARD DEPTH, EXCEPT AS NOTED.
 8. USE MECHANICAL COMPRESSION JOINTS FOR ALL V.C.P. JOINTS PER SPEC. SECS. M, 40 & 49.
 9. RESURFACE ALL TRENCH WITHIN PAVED AREA TO MEET L.A. COUNTY ROAD DEPT. OR CALIF. STATE HIGHWAY REQUIREMENTS IN ACCORDANCE WITH PERMITS.
 10. IF A POWER POLE IS WITHIN THIRTY FEET OF SEWER, THE SEWER SHALL BE ENCASED PER SAITZ CASE III UNLESS OTHERWISE APPROVED BY THE COUNTY ENGINEER.
 11. HOUSE LATERALS TO BE CONSTRUCTED WITH INVERTS AT PROPERTY LINE 6" FEET BELOW CURB GRADE.
 12. MANHOLES SHALL BE BRICK SEWER STRUCTURES PER SAITZ PRECAST CONCRETE MANHOLES PER S-A-136 OR S-A-178 MAY BE USED AS AN ALTERNATE IN LOCATIONS APPROVED BY THE COUNTY ENGINEER.
 13. FOR ALLOWABLE LEAKAGE TEST USE FORMULA NO. 2, SPEC. SEC. 54.
 14. MANHOLE TOPS IN UNIMPROVED RIGHTS-OF-WAY TO BE SIX INCHES ABOVE FINISHED GRADE.
 15. THE CONTRACTOR SHALL NOTIFY THE CONSTRUCTION DIVISION BY TELEPHONE, MADISON 9-471, EXT. 81591 AT LEAST TWENTY-FOUR HOURS BEFORE STARTING ANY WORK UNDER THIS CONTRACT.
 16. STANDARD SPECIFICATIONS DATED MAY 26, 1962, SHALL APPLY IN THE CONSTRUCTION OF THIS PROJECT.

17. ALL STATE AND LOCAL TRENCH SAFETY ORDERS WILL BE RIGIDLY ENFORCED.
18. THE PRIVATE ENGINEER SHALL FURNISH THE COUNTY ENGINEER WITH GRADE SHEETS AND STATIONING FOR ALL HOUSE LATERALS AND V BRANCHES AND SHALL PROVIDE STAKES FOR THEM AT THEIR PROPER LOCATION WITH STATIONING PLAINLY MARKED. ALL HOUSE LATERALS SHALL BE CONSTRUCTED IN A STRAIGHT ALIGNMENT AT RIGHT ANGLES FROM THE MAIN LINE SEWER EXCEPT AS SHOWN ON THE PLANS. HOUSE LATERALS FROM CHIMNEYS SHALL NOT HAVE AN ANGLE OF LESS THAN 45° WITH THE MAIN LINE SEWER. ANY CHANGE IN ALIGNMENT SHALL BE REQUESTED IN WRITING BY THE PRIVATE ENGINEER.
19. Sewers in filled ground:
 - (A) No construction will be permitted in fill areas unless acceptable certification is submitted to the Construction Div. of the County Engineers Dept. that relative compaction is greater than 80%.
 - (B) If compaction is less than 90%, the sewer must be cradled as shown on plans per S-a-166, or have a special base course per S-a-179, Case III. Special Manhole bases must be installed per S-a-123 as indicated on plans.
 - (C) If compaction is greater than 90%, neither cradling nor special manhole bases will be required. However, mechanical compression joints must be used in fill areas.

APPROVAL OF THIS PLAN BY THE COUNTY OF LOS ANGELES DOES NOT CONSTITUTE A REPRESENTATION AS TO THE ACCURACY OF THE LOCATION OF OR THE EXISTENCE OR NON-EXISTENCE OF ANY UNDERGROUND UTILITY PIPE, OR STRUCTURE WITHIN THE LIMITS OF THIS PROJECT. THIS NOTE APPLIES TO ALL PAGES.
IF WORK IS TO BE DONE IN A STATE HIGHWAY, A PERMIT MUST BE OBTAINED FROM THE STATE OF CALIFORNIA, DIVISION OF HIGHWAYS, 120 SOUTH BRINK STREET.

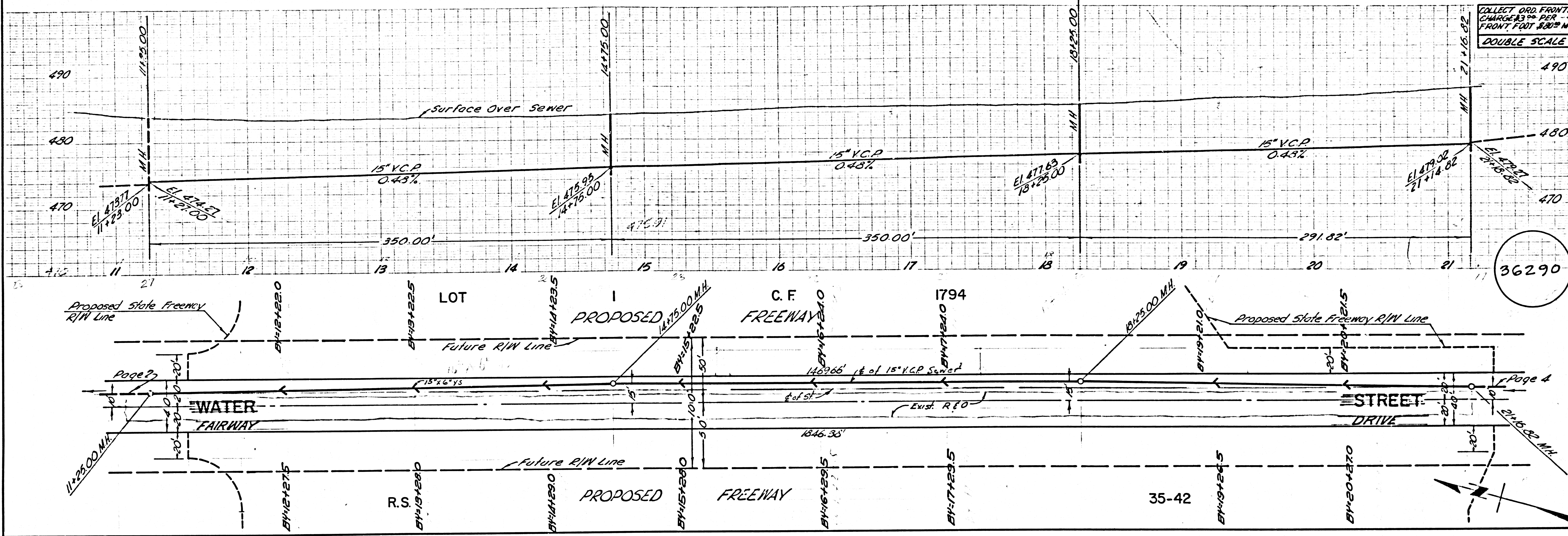
COUNTY OF LOS ANGELES, CALIFORNIA
APPROVED, JOHN A. LAMBIE, COUNTY ENGINEER
APPROVED, J. PARKHURST, CHIEF ENGINEER
BY [Signature] ASST. SANITATION ENGINEER
BY [Signature] OFFICE ENGINEER
CHECKED BY [Signature]
OFFICE OF COUNTY ENGINEER, REG. C. E. NO. 3461
SUBMITTED [Signature] SAN DIMAS REGIONAL ENGINEER

INDEX MAP
Scale: 1"=600'
P.C. 6594
Note: Numbers in circles indicate page numbers

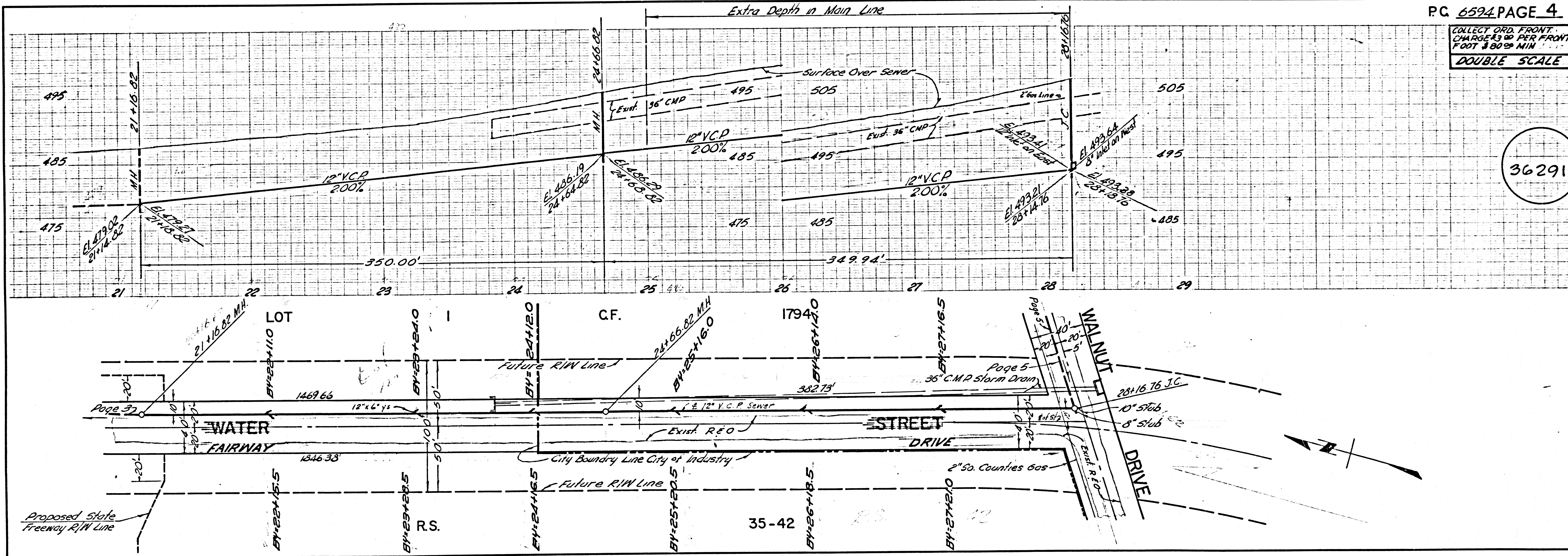


P.C. 6594 PAGE 2
DOUBLE SCALE
COLLECT ORD. FRONT
CHARGE \$3.00 PER
FRONT FOOT \$80.00 MIN.
36289

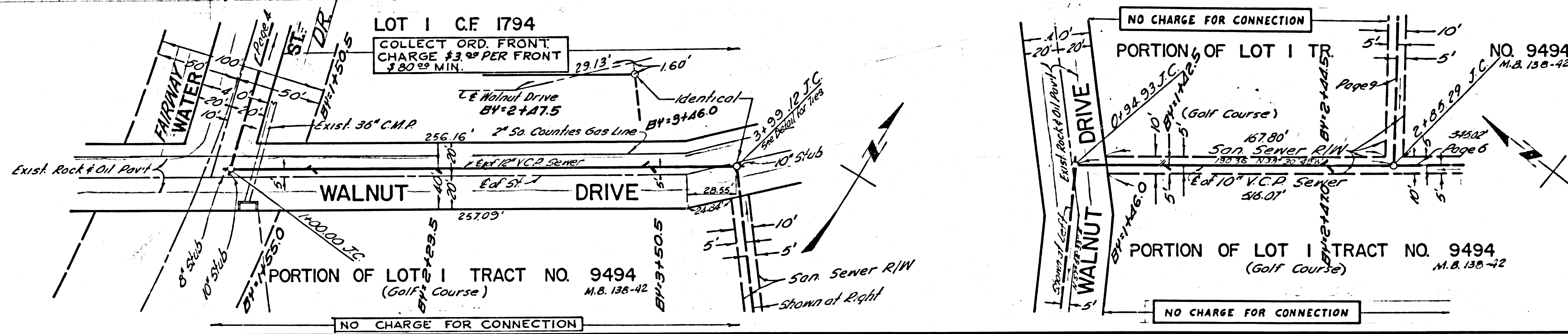
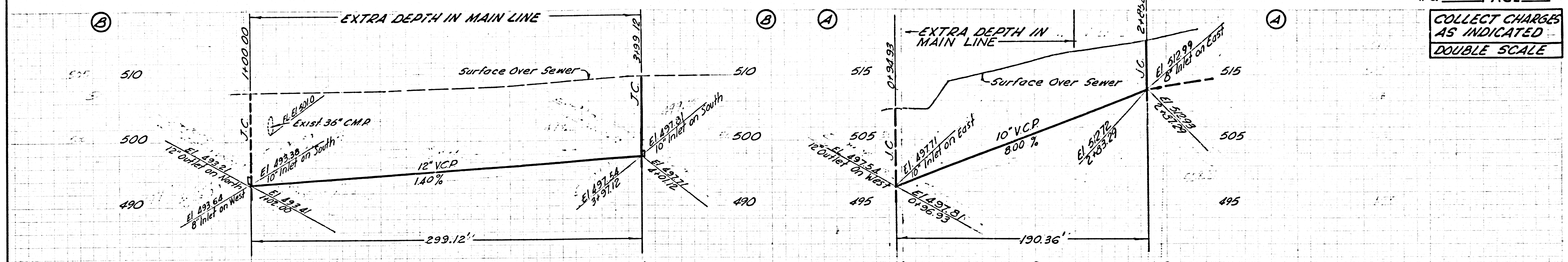
COLLECT ORD. FRONT CHARGES \$3.00 PER FRONT FOOT \$80.00 MIN. DOUBLE SCALE



COLLECT ORD. FRONT CHARGES \$3.00 PER FRONT FOOT \$80.00 MIN. DOUBLE SCALE

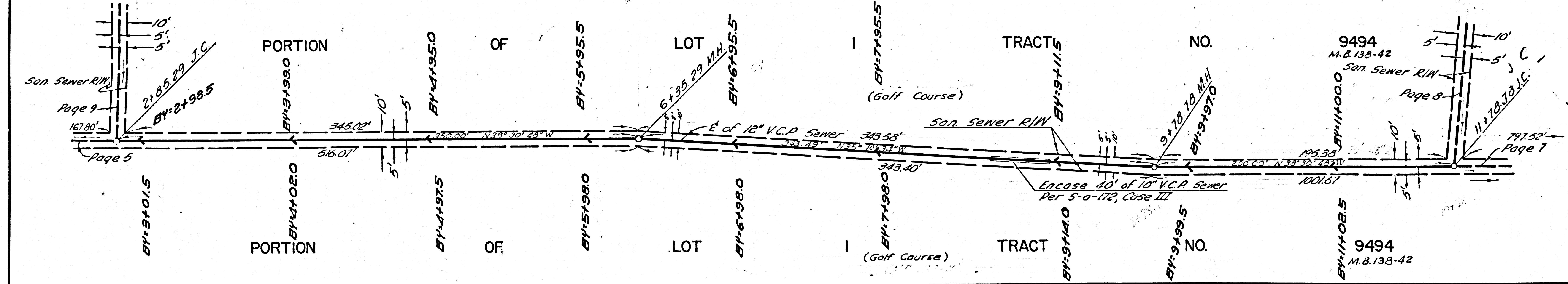
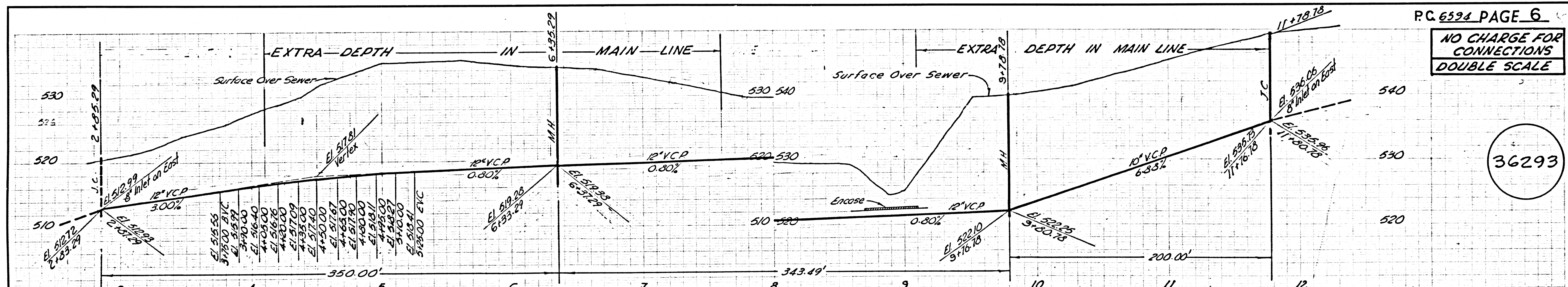


COLLECT CHARGES AS INDICATED
DOUBLE SCALE

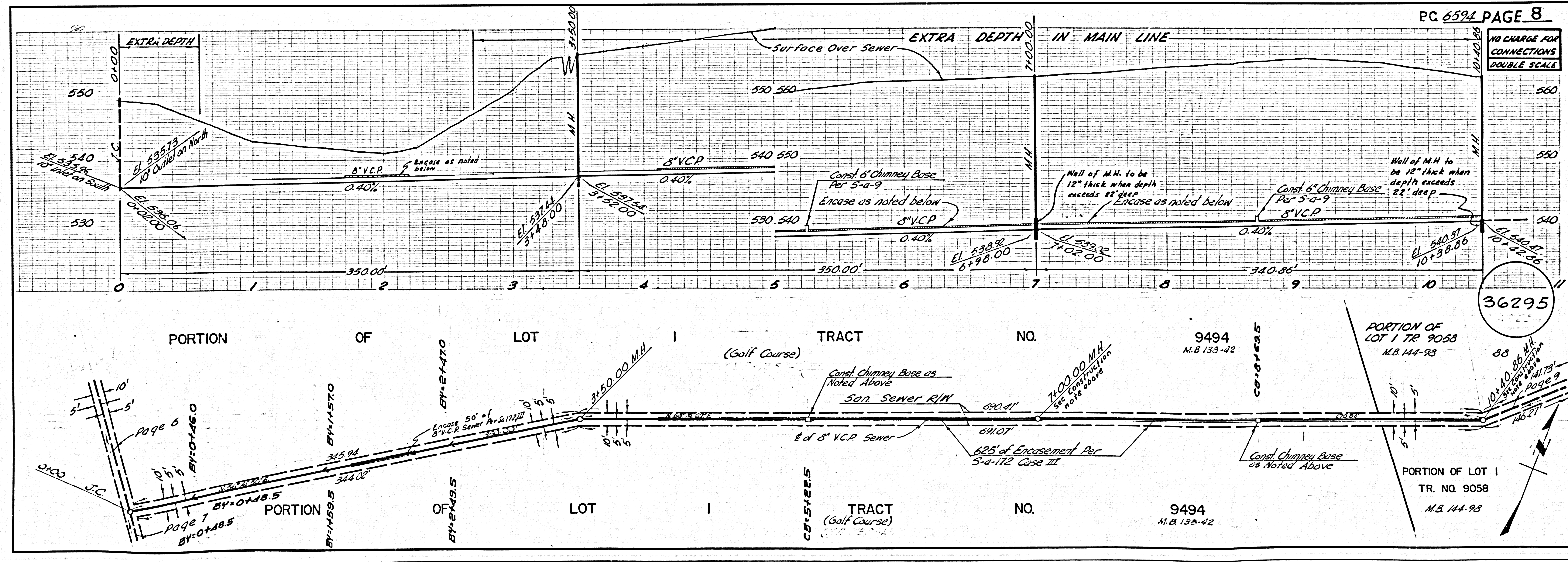
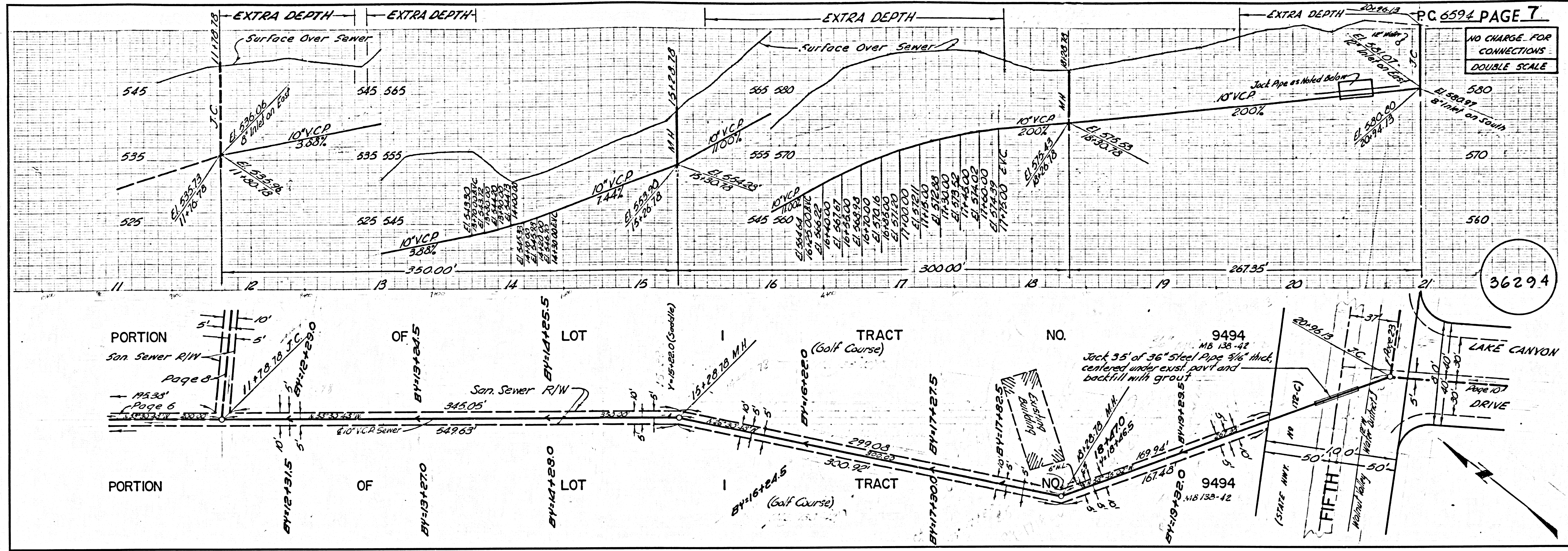


36292

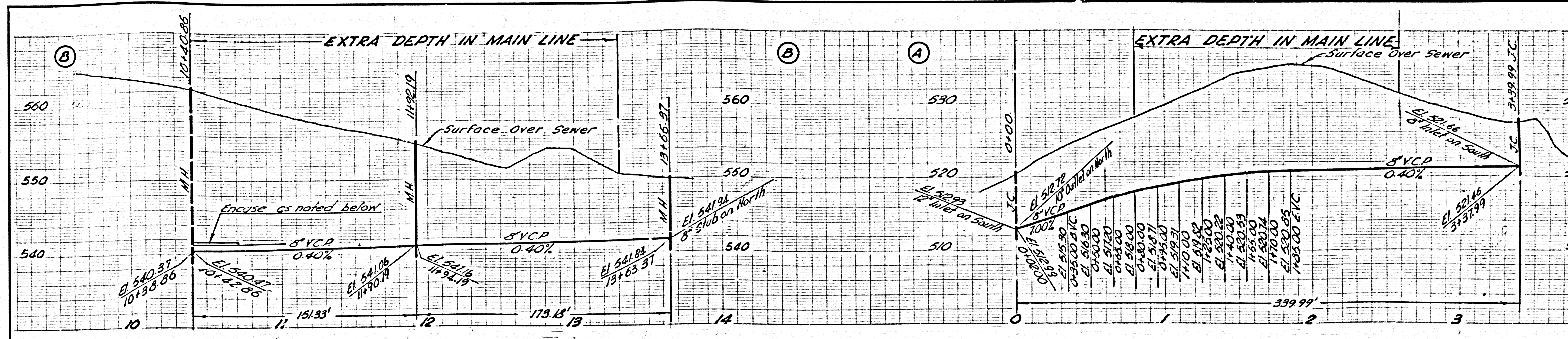
NO CHARGE FOR CONNECTIONS
DOUBLE SCALE



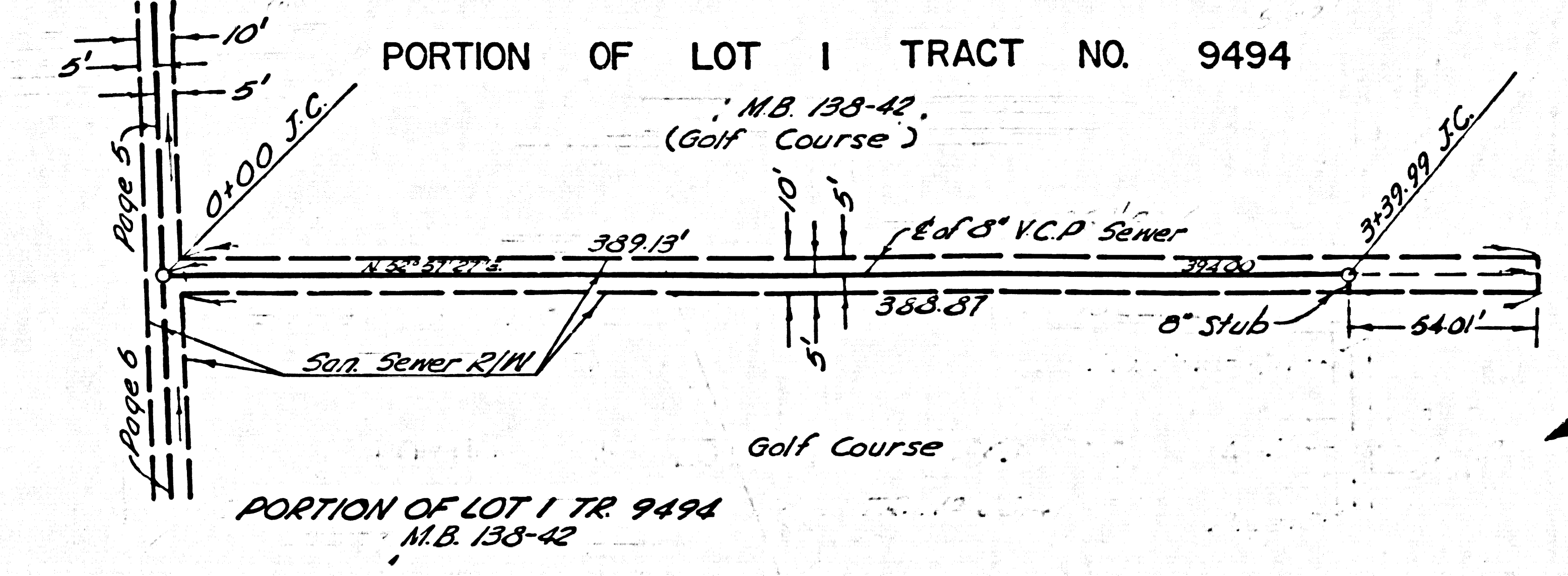
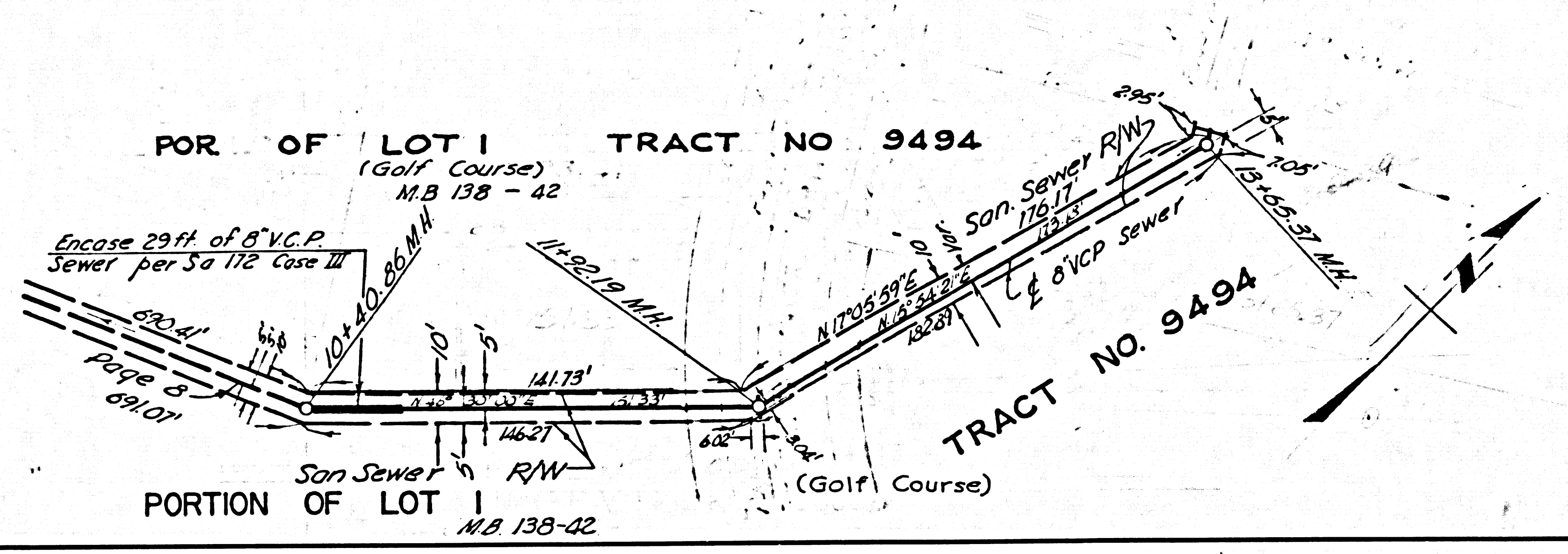
36293



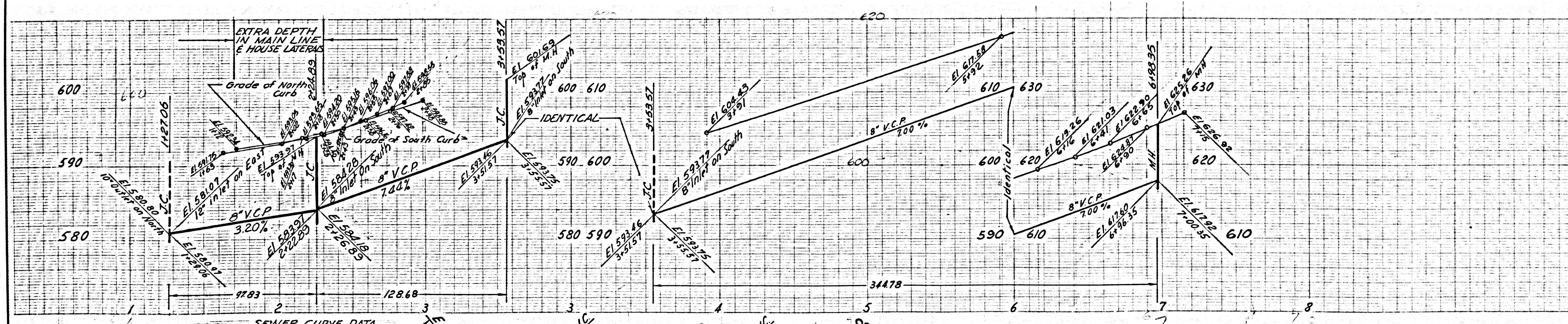
NO CHARGE FOR CONNECTIONS
DOUBLE SCALE



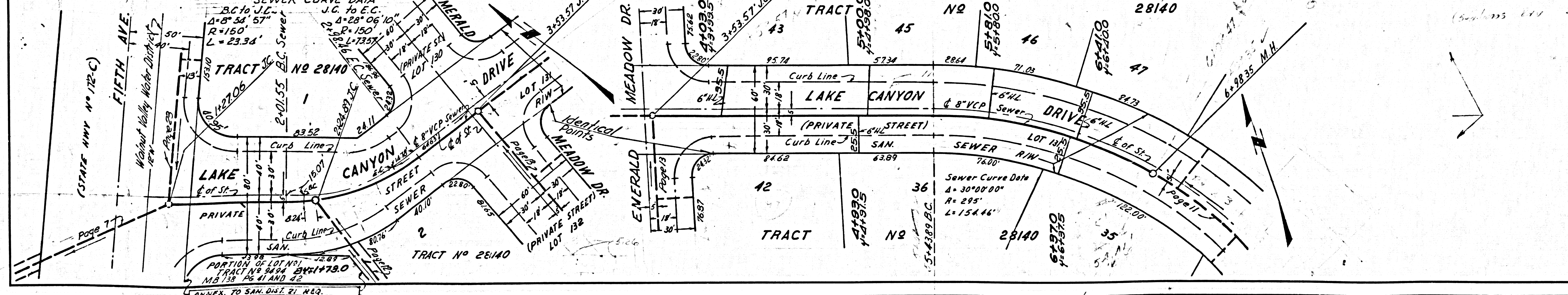
36296

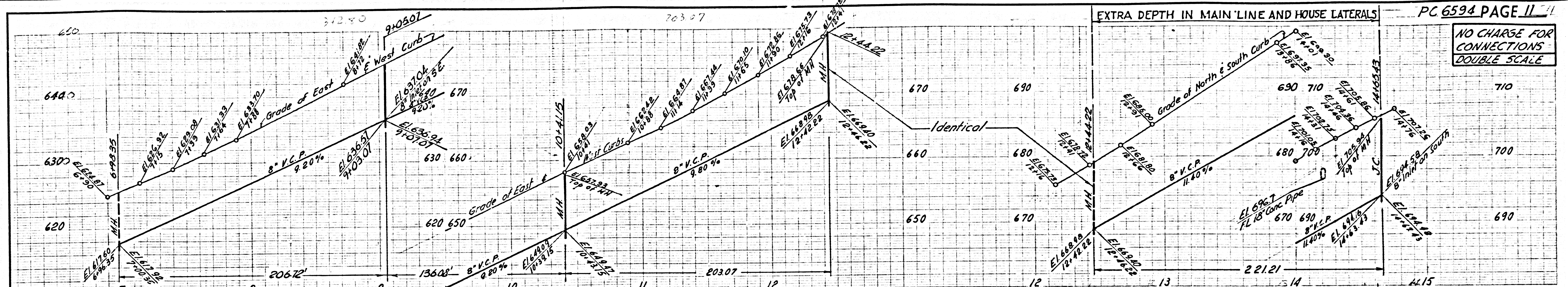


NO CHARGE FOR CONNECTIONS
DOUBLE SCALE

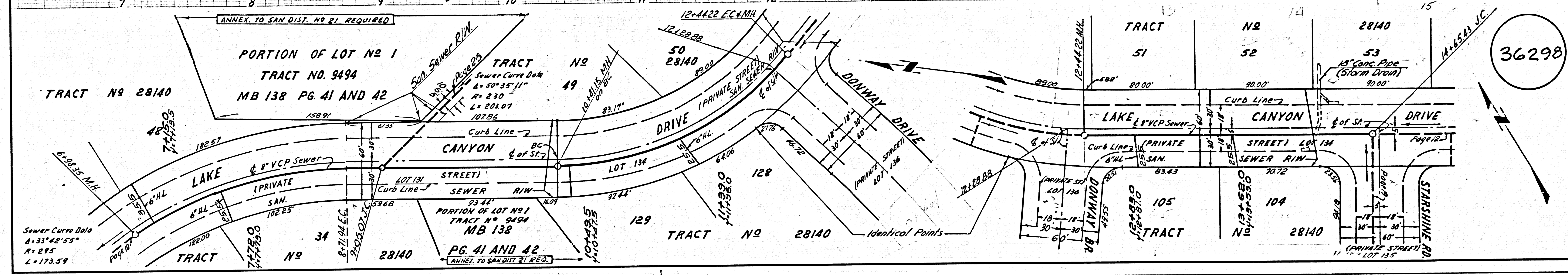


36297

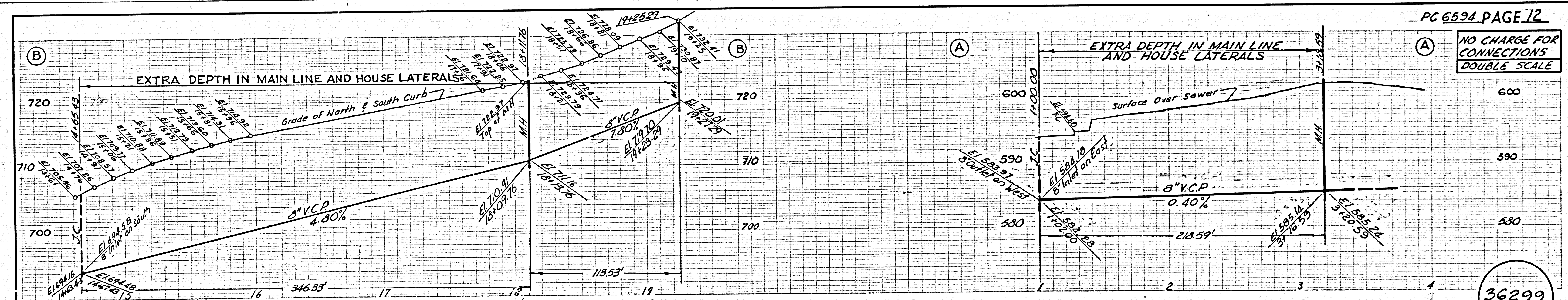




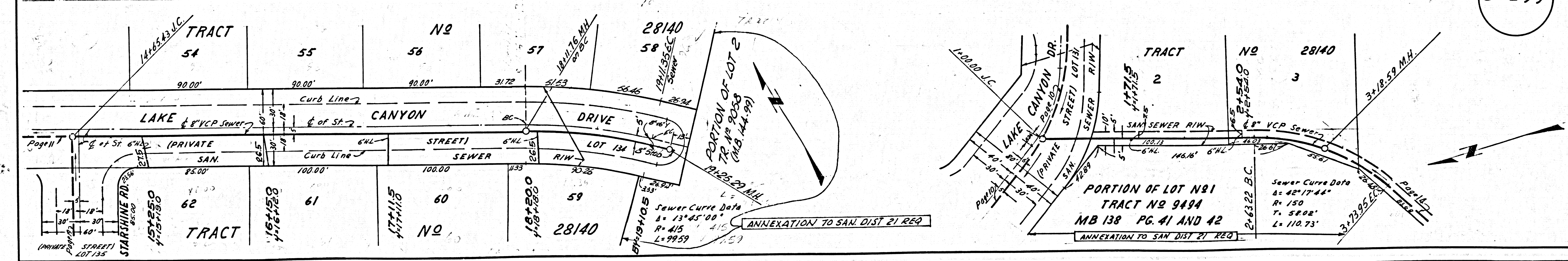
NO CHARGE FOR CONNECTIONS
DOUBLE SCALE



36298

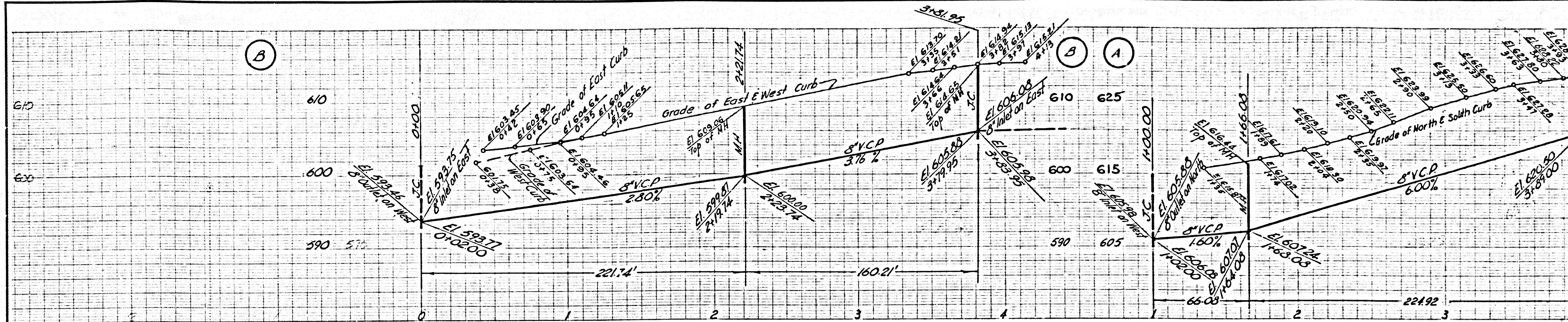


NO CHARGE FOR CONNECTIONS
DOUBLE SCALE

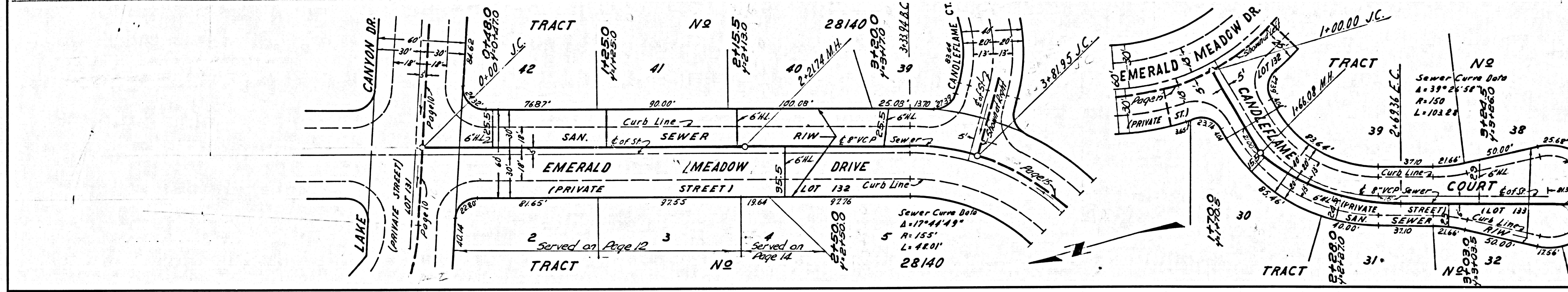


36299

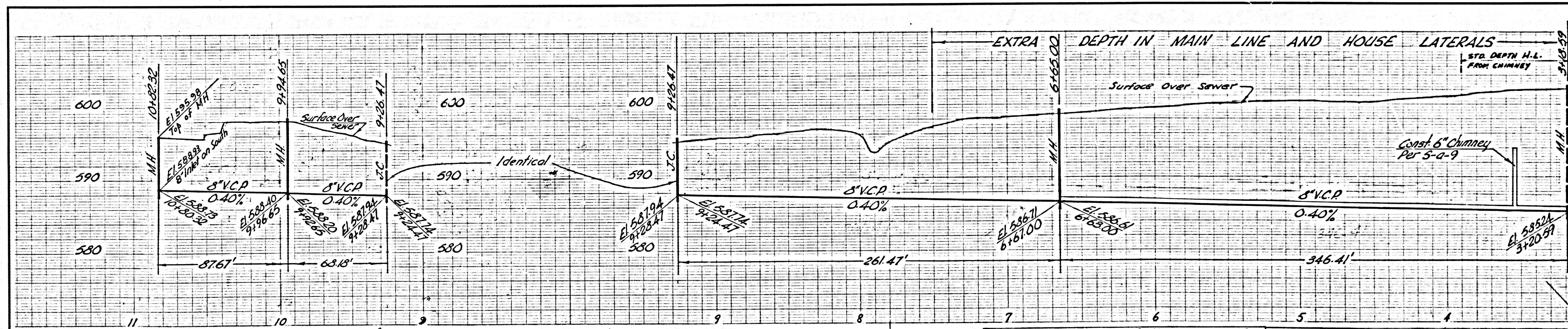
NO CHARGE FOR CONNECTIONS DOUBLE SCALE



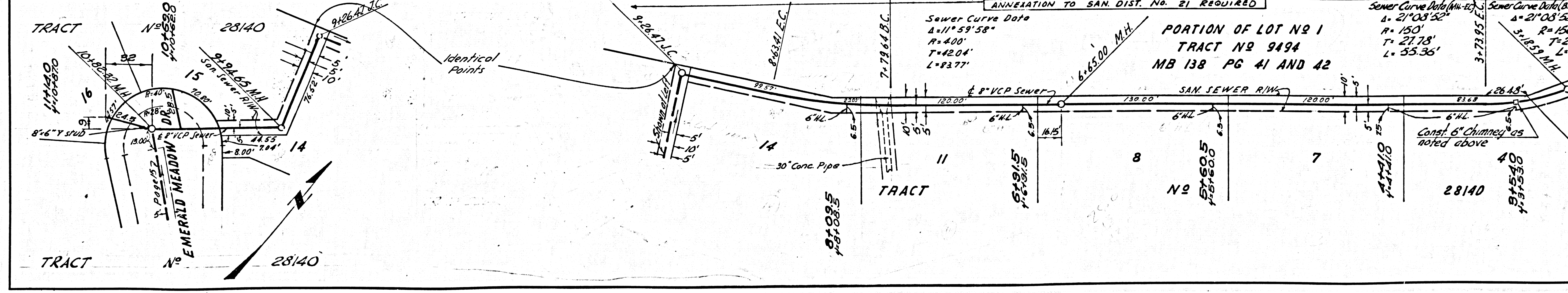
36300



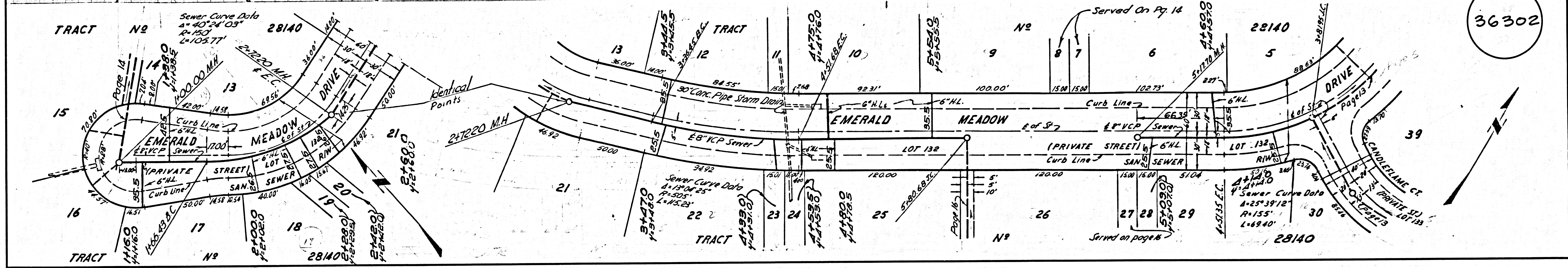
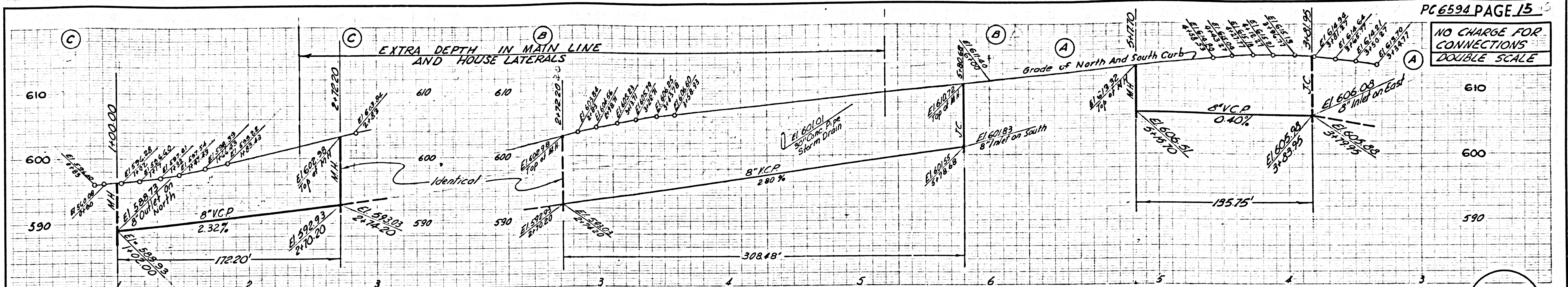
NO CHARGE FOR CONNECTIONS DOUBLE SCALE



36301

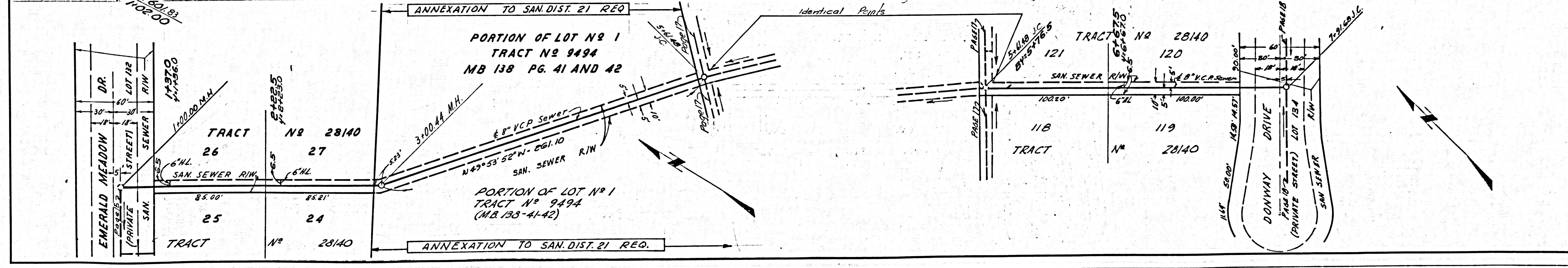
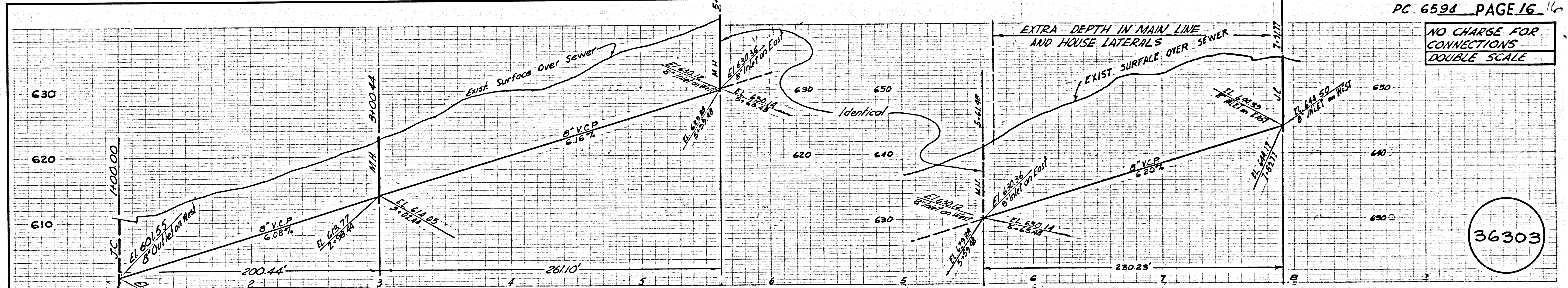


NO CHARGE FOR CONNECTIONS
DOUBLE SCALE

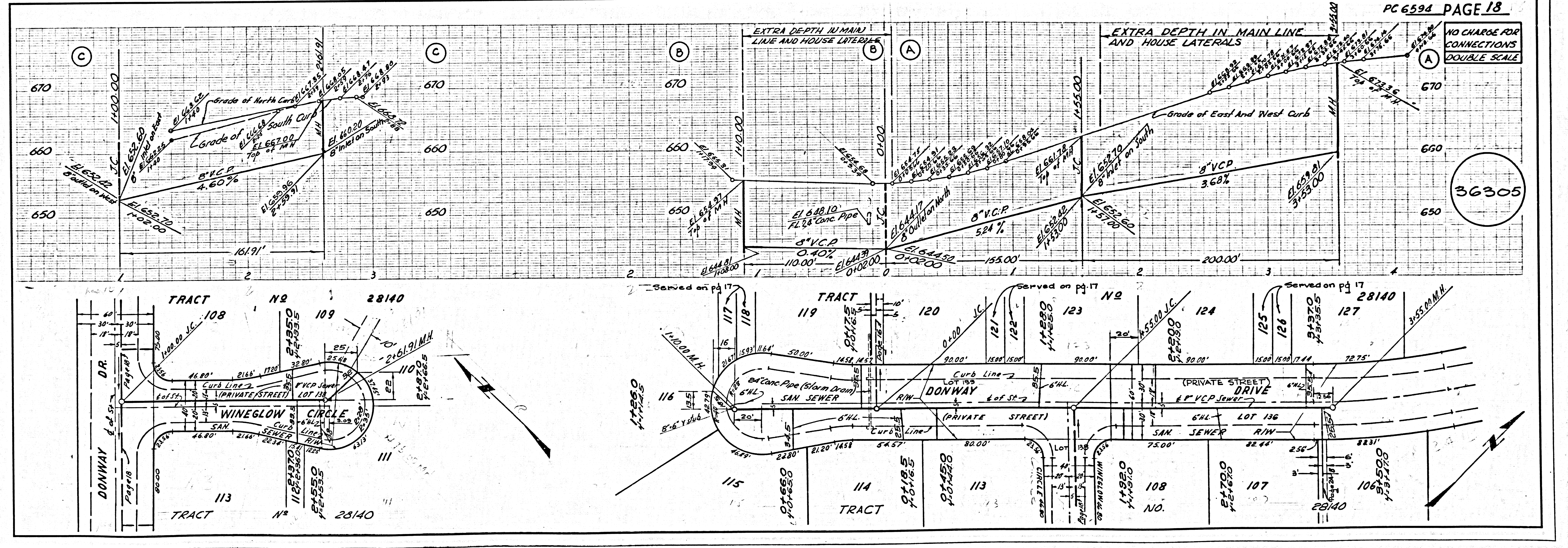
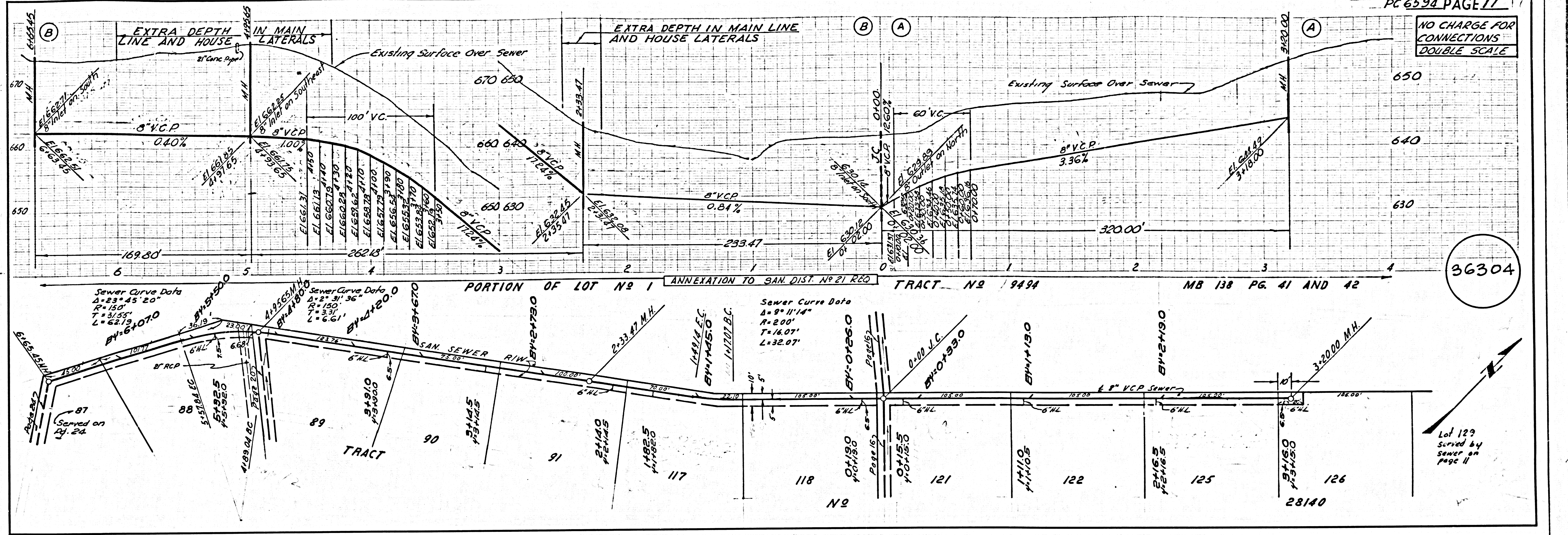


36302

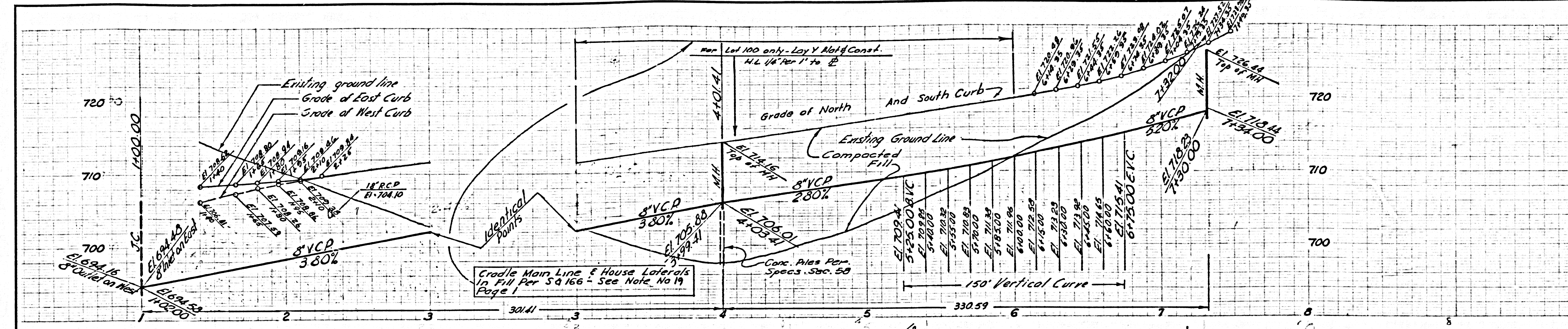
NO CHARGE FOR CONNECTIONS
DOUBLE SCALE



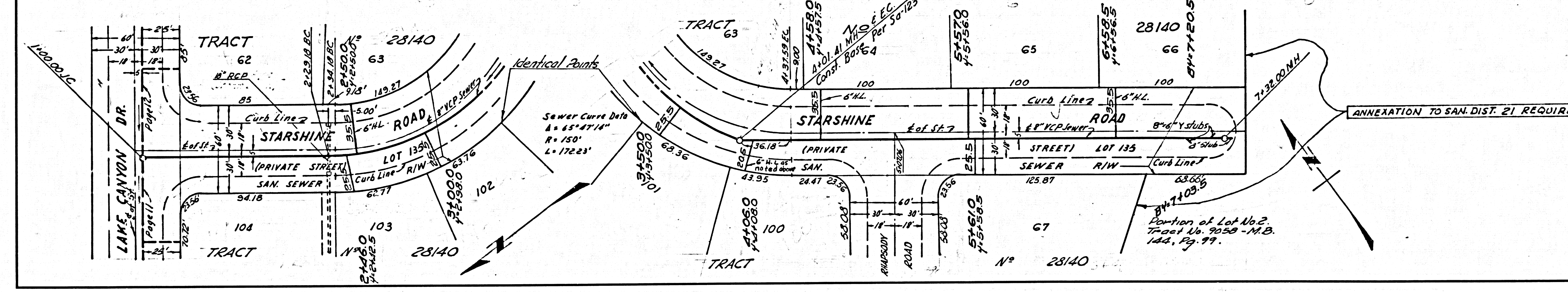
36303



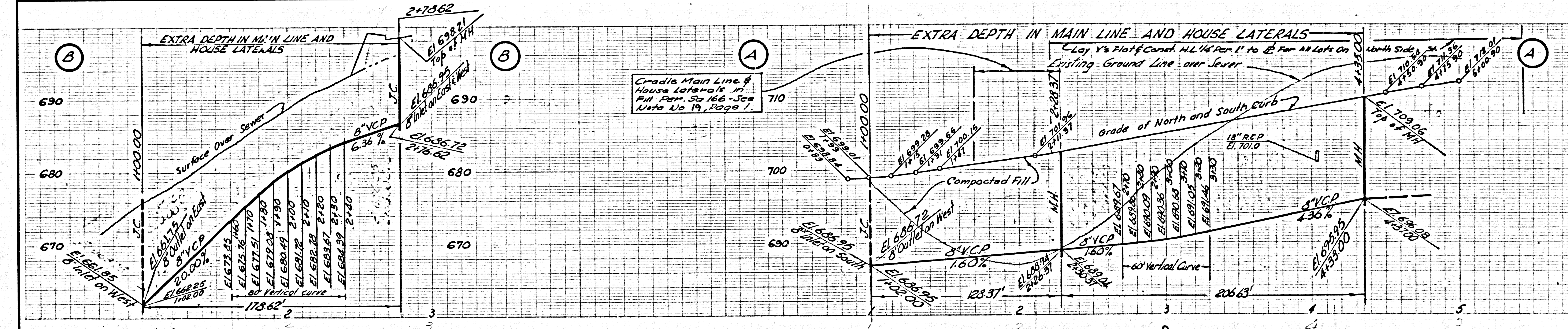
NO CHARGE FOR CONNECTIONS DOUBLE SCALE



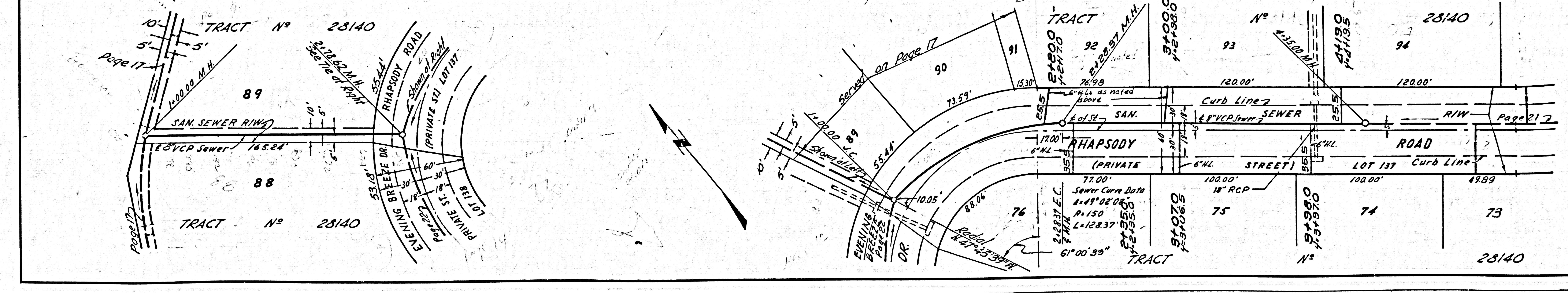
36306



NO CHARGE FOR CONNECTIONS DOUBLE SCALE

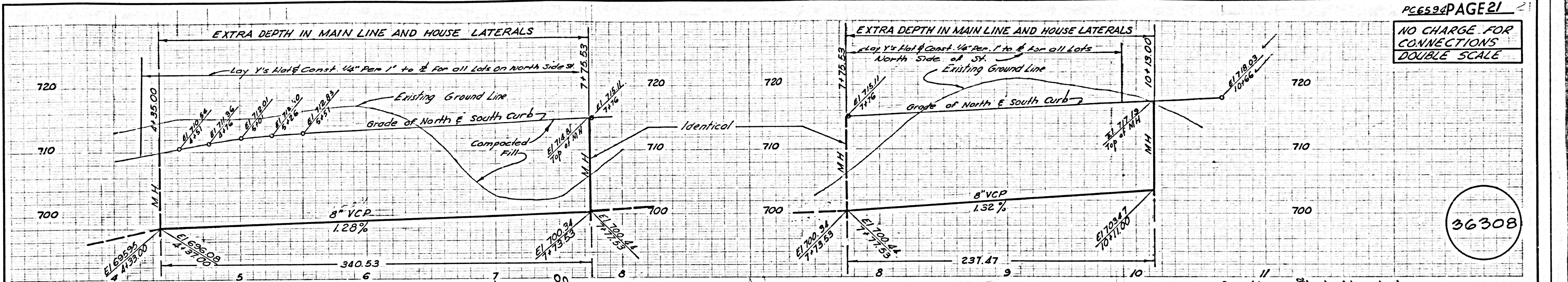


36307

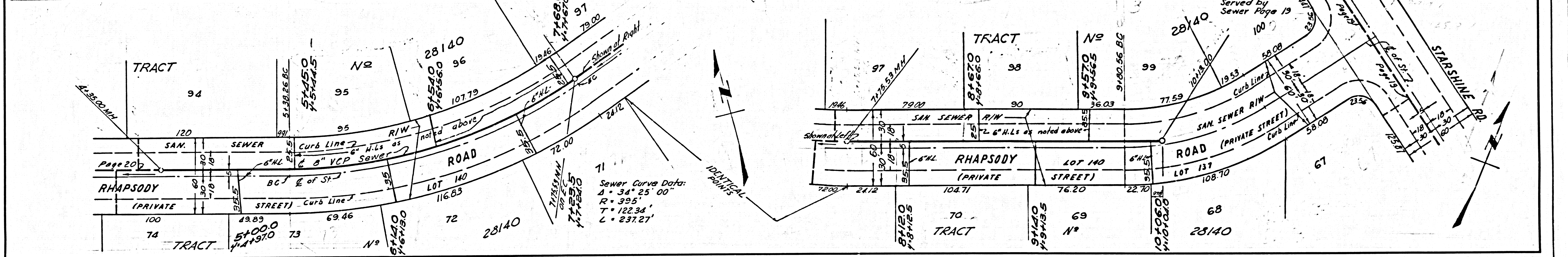


S.E. 184 L.A. COUNTY SEWER SHEET NO. 2 60. CAL. BLUEPRINT CO.

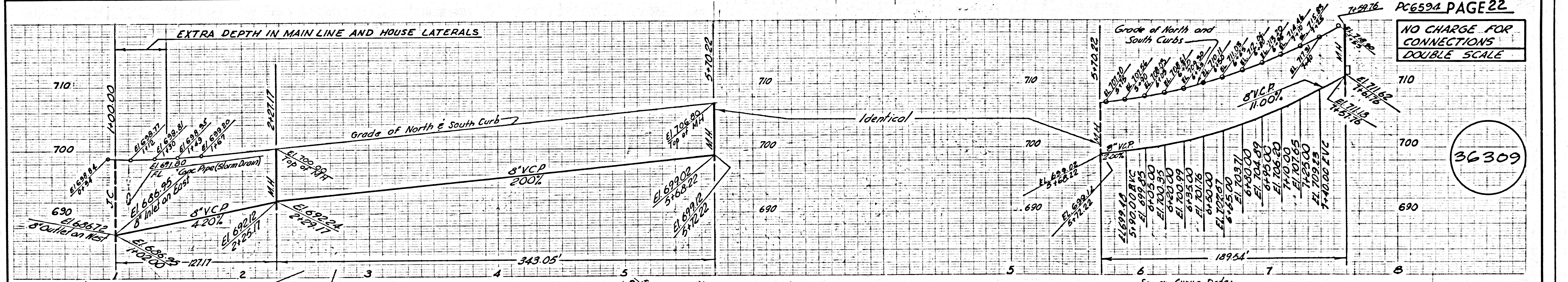
NO CHARGE FOR CONNECTIONS
DOUBLE SCALE



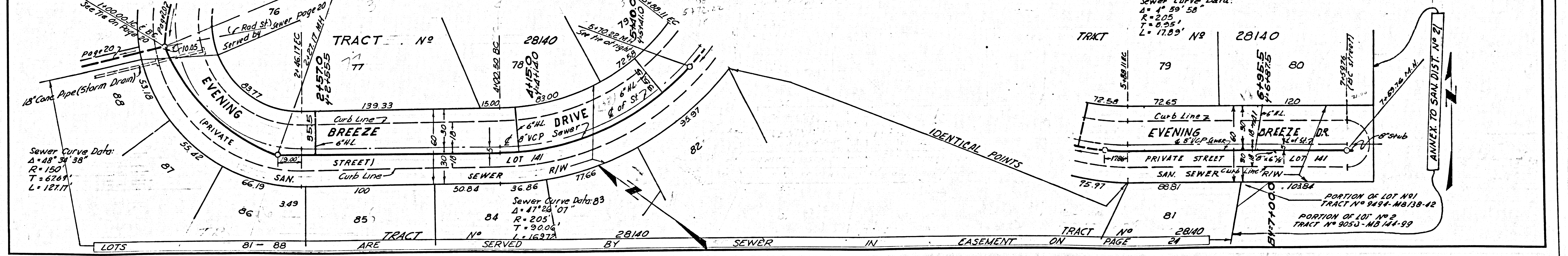
36308



NO CHARGE FOR CONNECTIONS
DOUBLE SCALE

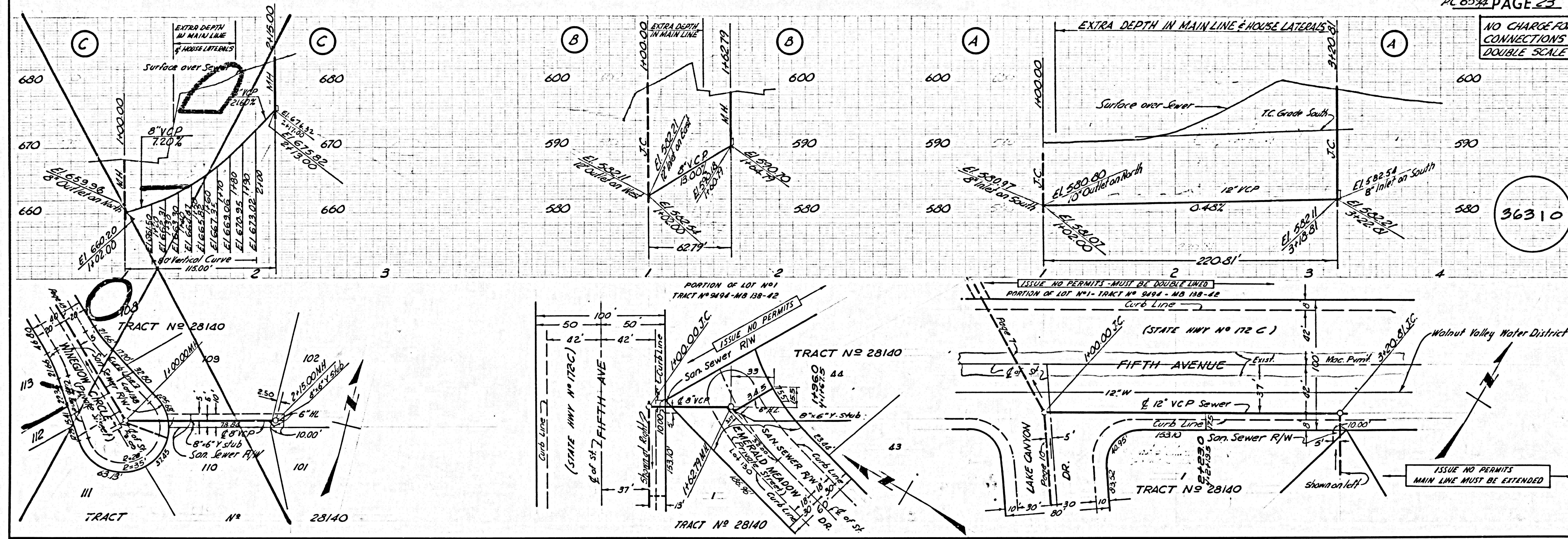


36309

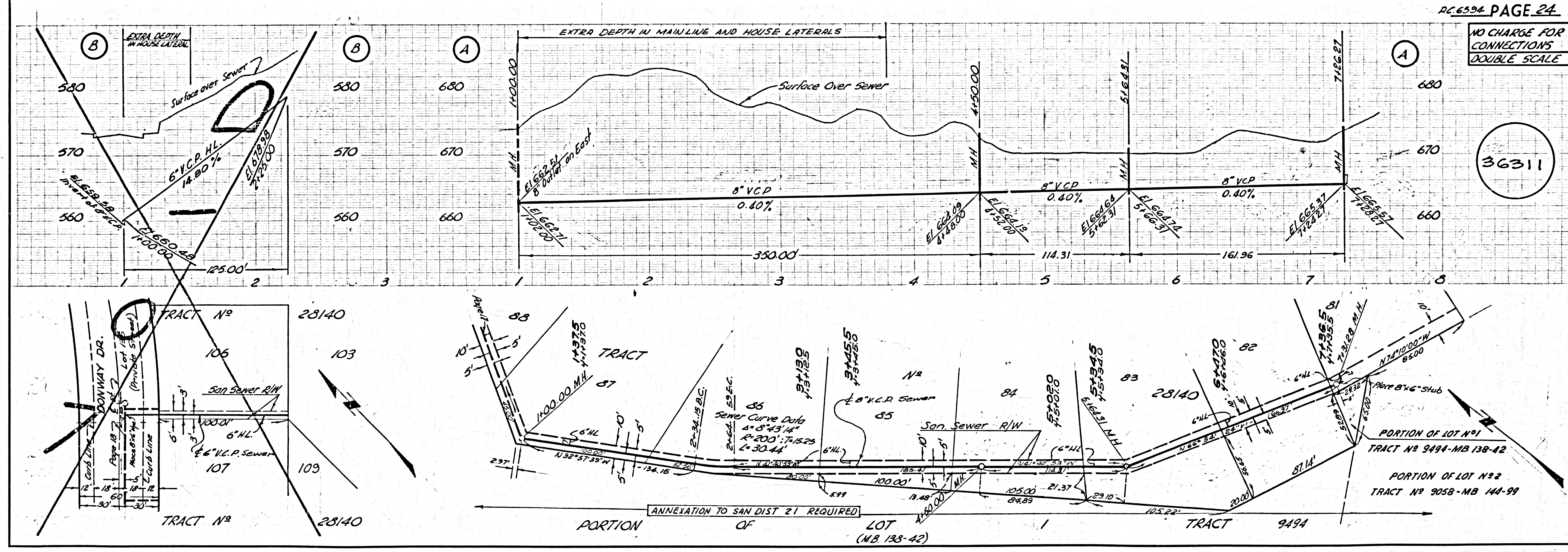


36308

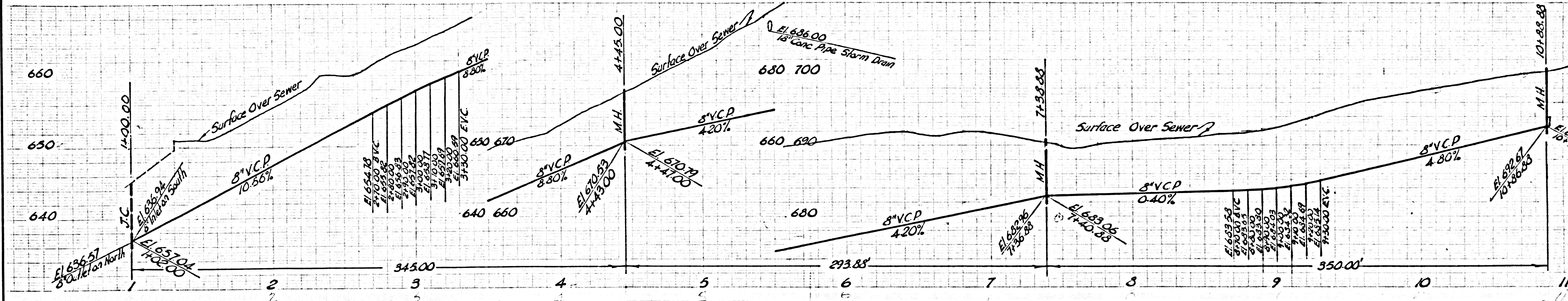
NO CHARGE FOR CONNECTIONS DOUBLE SCALE



NO CHARGE FOR CONNECTIONS DOUBLE SCALE



NO CHARGE FOR CONNECTIONS DOUBLE SCALE



36312

