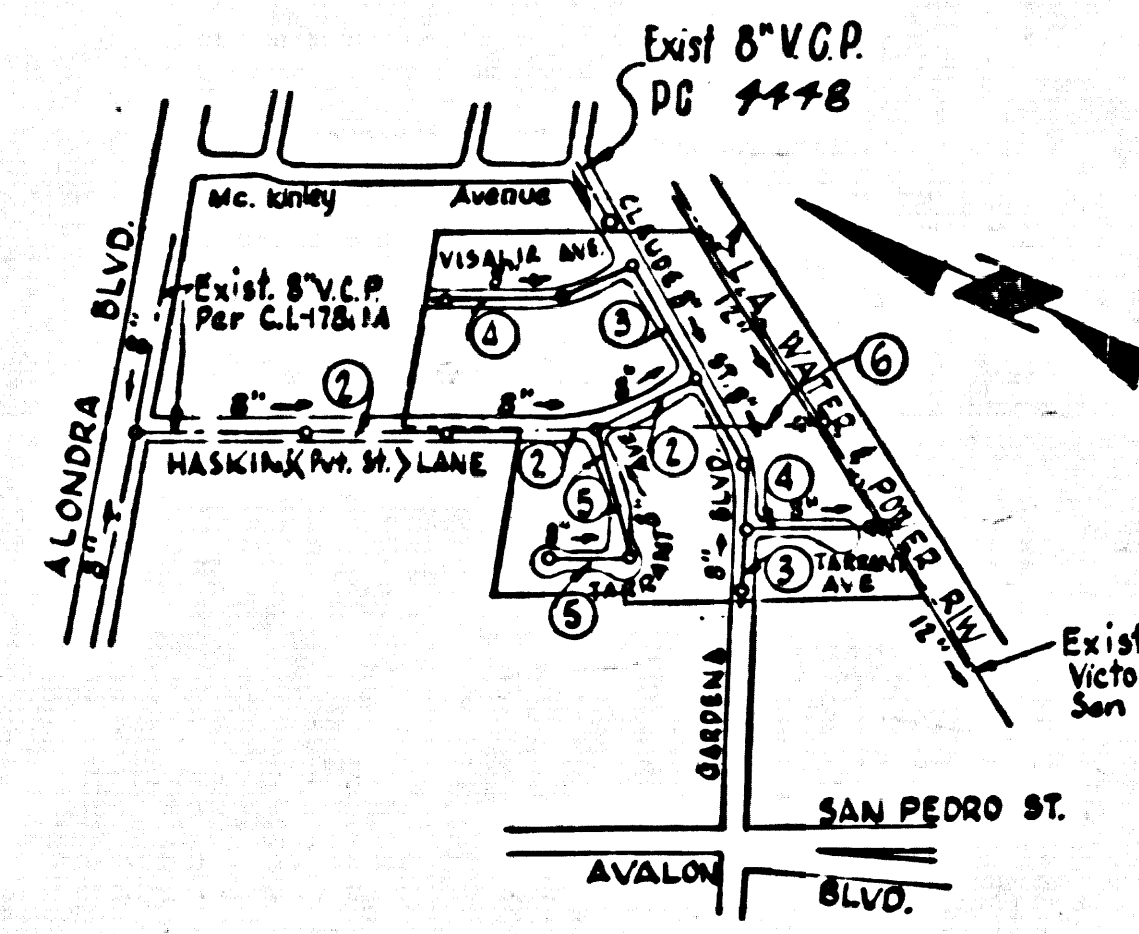


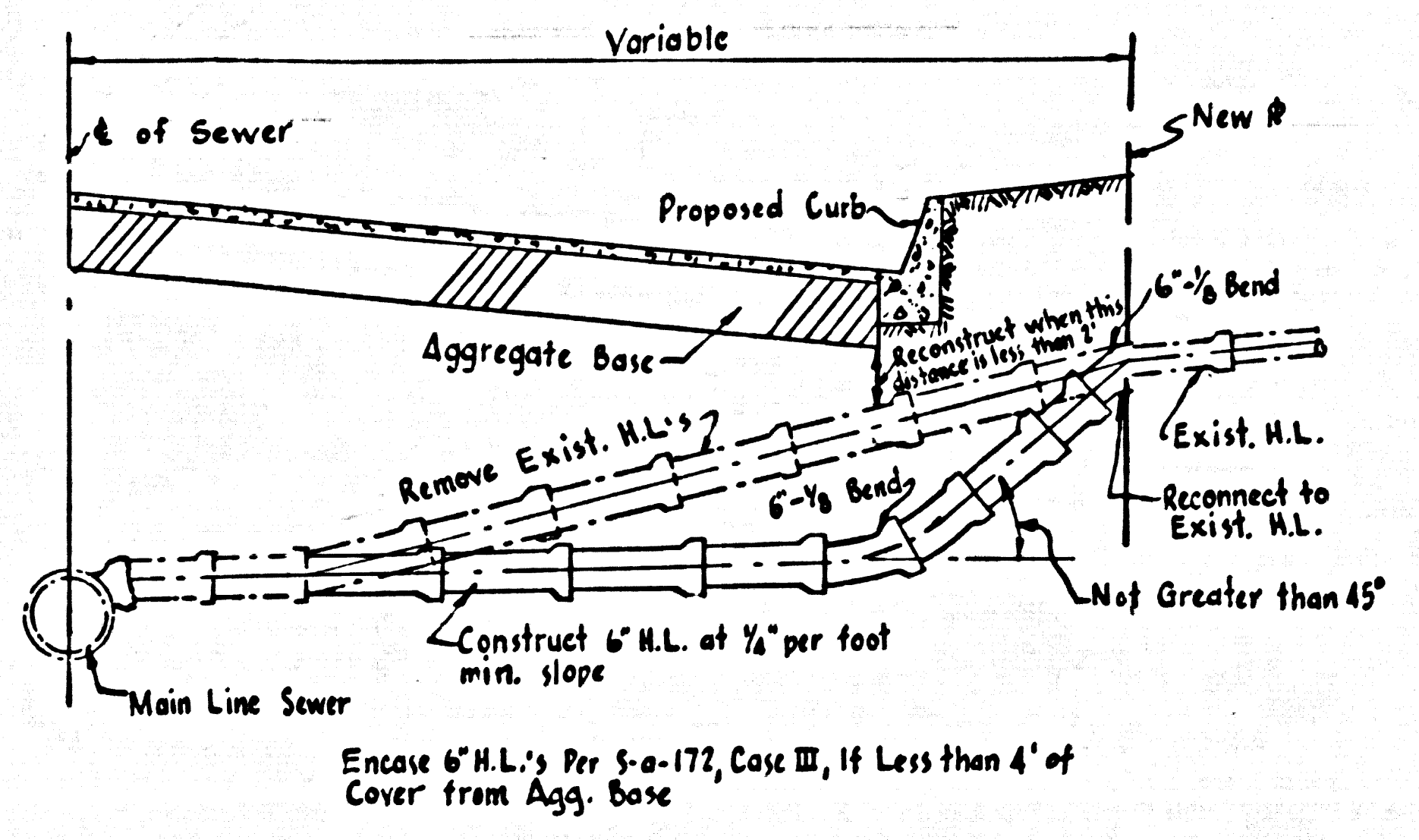
B.M. SY-3132 ELEV. 54.357

L & T SOUTHEAST CORNER CONC. WALK @ SOUTH SIDE OF BLDG. #16431 AVALON BLVD. ± 48' W/O ± AVALON BLVD. ± 31' N/O ± 165' ST. ± 2' E. OF S.E. COR. BLDG. GARDENA QUAD. 1960



INDEX MAP SCALE: 1"=600' P.C. 6597 TRACT No 27737

BEFORE BREAKING INTO ANY EXISTING STRUCTURE AND BEFORE FINAL ACCEPTANCE OF THIS WORK, COUNTY SANITATION DISTRICT (DU 4-1281) SHALL BE NOTIFIED IN ORDER THAT REQUIRED INSPECTION CAN BE MADE.



WHERE ENCASUREMENT IS SPECIFIED FOR THE EXISTING HOUSE LATERAL ON PLAN BUT FIELD INSPECTION DURING CONSTRUCTION REVEALS THAT THERE IS ACTUALLY LESS THAN 2' OF CLEARANCE BETWEEN THE PROPOSED AGGREGATE BASE OF THE STREET AND THE TOP OF THE EXIST. HOUSE LATERAL SUCH HOUSE LATERAL SHALL BE RECONSTRUCTED IN ACCORDANCE WITH THIS TYPICAL SECTION IN LIEU OF THE ENCASUREMENT SPECIFIED.

TYPICAL SECTION FOR RECONSTRUCTION OF EXISTING HOUSE LATERALS

NOTICE TO CONTRACTOR

THE EXISTENCE AND LOCATION OF ANY UNDERGROUND UTILITY PIPES OR STRUCTURES ON THESE PLANS ARE OBTAINED BY A SEARCH OF THE AVAILABLE RECORDS. THE CONTRACTOR IS REQUIRED TO TAKE DUE PRECAUTIONARY MEASURES TO PROTECT THE LINES SHOWN ON THESE PLANS.

LENNOX BLDG. DIST. NO. 7

- 1. PROVIDE STAKES ON THE PROPERTY LINE OR PROPERTY LINES PRODUCED AT RIGHT ANGLES TO THE SEWER LINE AT THE CENTER LINE OF EACH MANHOLE.
2. NO REPRESENTATIVE OF THE COUNTY ENGINEER WILL SURVEY OR LAY OUT ANY PORTION OF THE WORK.
3. THE PRIVATE ENGINEER SHALL FURNISH THE COUNTY ENGINEER WITH GRADE SHEETS AND STATIONING FOR ALL HOUSE LATERALS AND Y BRANCHES AND SHALL PROVIDE STAKES FOR THEM AT THEIR PROPER LOCATIONS WITH STATIONING PLAINLY MARKED.

COLLECT CHARGES AS INDICATED

JK Under 7-26-63

NO CONNECTIONS FOR THE DISPOSAL OF INDUSTRIAL WASTES SHALL BE MADE TO SEWERS SHOWN ON THESE DRAWINGS WITHOUT WRITTEN PERMISSION FROM THE CHIEF ENGINEER AND GENERAL MANAGER OF THE COUNTY SANITATION DISTRICTS.

TRACT No 27737 PRIVATE CONTRACT NO. 6597

W.S. 26, C-4 6 SHEETS, 6 PAGES SCALE: VERT. 1"=4' HORIZ. 1"=40'

LANCO ENGINEERING

Clark M. Leonard REG. C.E. NO. 13167

FOR LEGEND SEE PLAN NO. S-6-64

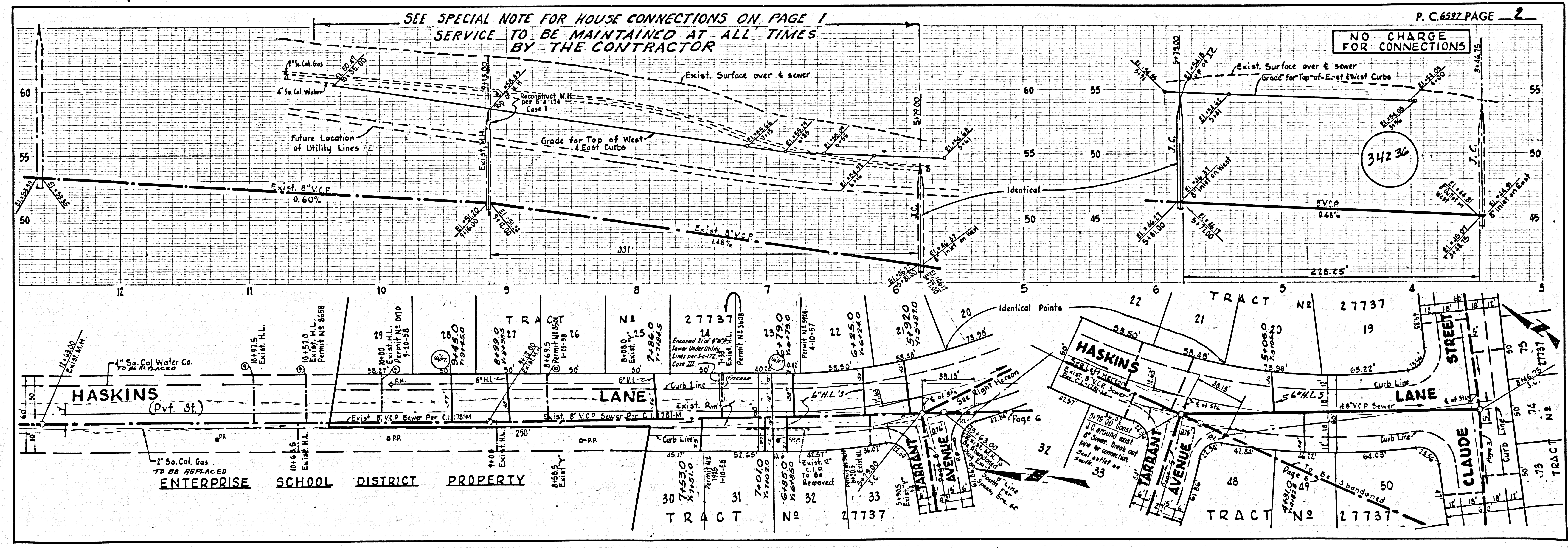
NOTE: GRADES TO WHICH THIS IMPROVEMENT IS TO BE CONSTRUCTED ARE SHOWN ON PLANS AND PROFILES. GRADE POINTS FOR TOP OF CURBS, CENTER LINE OF STREETS, OR CENTER LINE OF ALLEYS ARE SHOWN BY CIRCLES ON PROFILES. AT ALL POINTS BETWEEN DESIGNATED POINTS THE GRADE SHALL BE ESTABLISHED SO AS TO CONFORM TO A STRAIGHT LINE DRAWN BETWEEN SAID DESIGNATED POINTS.

COUNTY OF LOS ANGELES, CALIFORNIA JOHN A. LAMBIE, COUNTY ENGINEER J. D. PARKHURST, CHIEF ENGINEER

APPROVED BY: [Signature] SANITATION ENGINEER

APPROVED BY: [Signature] OFFICE ENGINEER

J. N. 0360.52



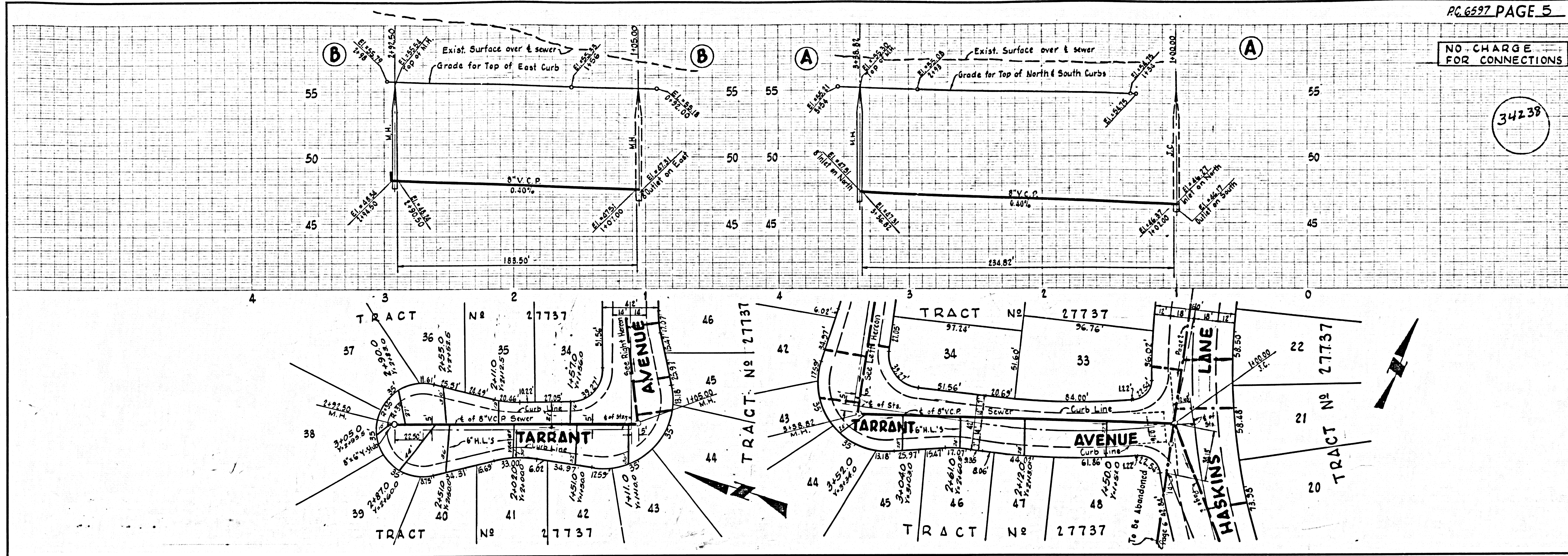






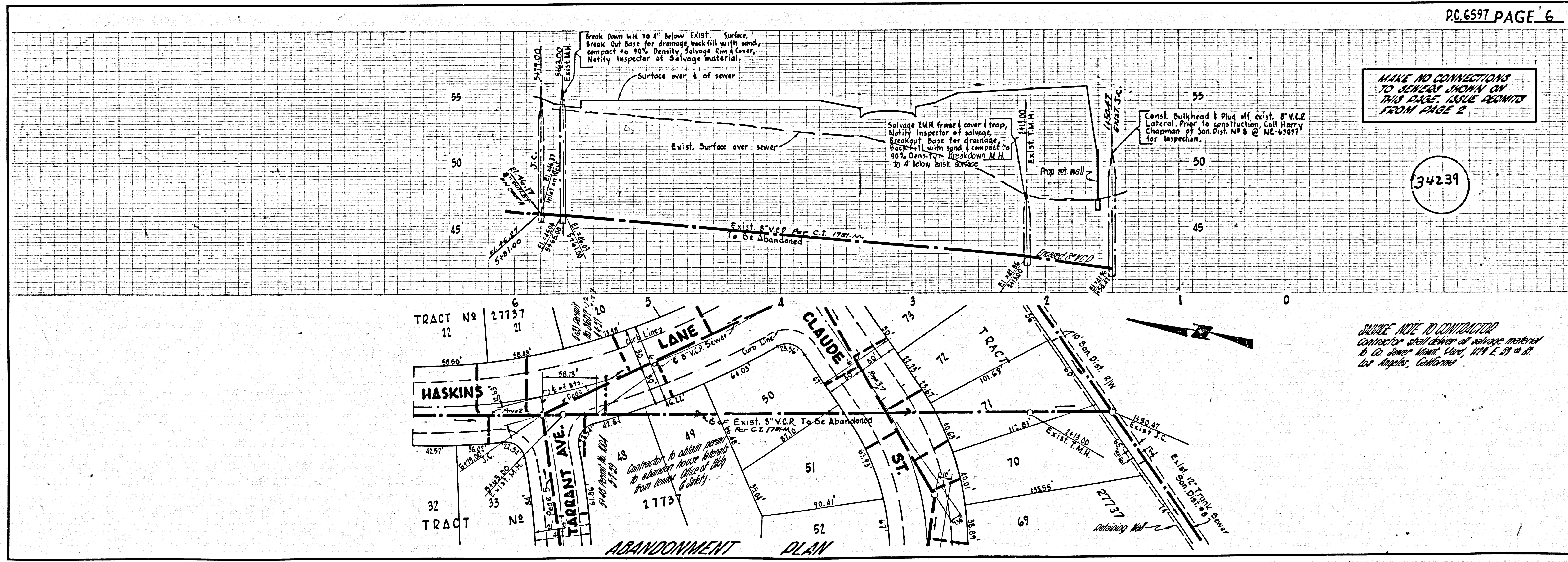
NO CHARGE FOR CONNECTIONS

34238



MAKE NO CONNECTIONS TO SEWER SHOWN ON THIS SHEET. ISSUE PERMITS FROM PAGE 2

34239



SAVE NOTE TO CONTRACTOR Contractor shall deliver all salvage material to Co. sewer Maint. Dept. 1129 E. 29th St. Los Angeles, California