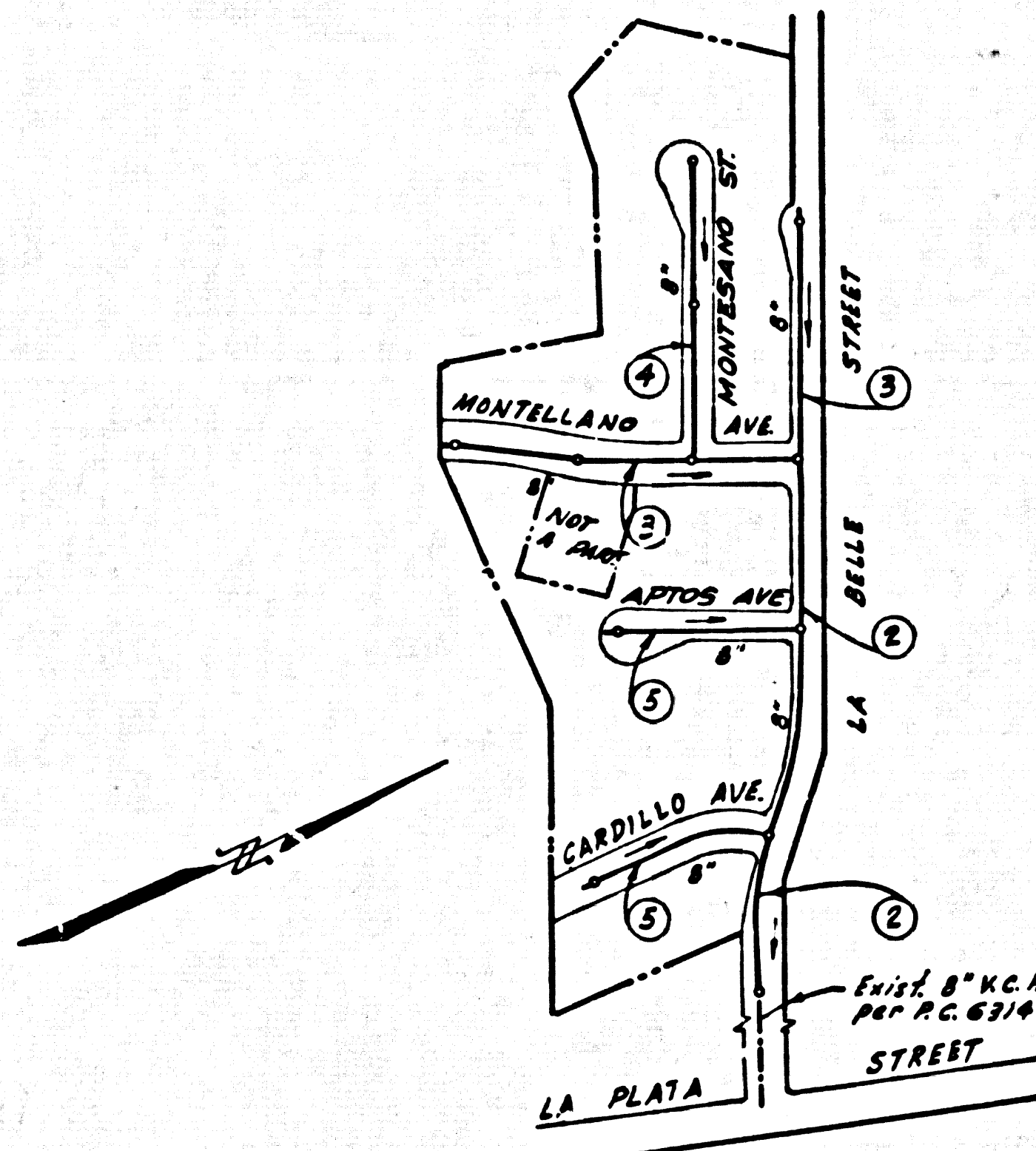


B.M. 56 1611 ELEV. 574.206
 Description Road Dept. 8.76' from T.S. South
 of end of Curb. Per West Ordinance No 15860
 Los Altos Dr. 31' South of & 600' East of
 Los Covetans Ave.
 Whittier QUAD. 1955



INDEX MAP
 Scale: 1" = 300'
 TRACT No 27513
 P.C. No 6602

DOUBLE SCALE
 LA PUENTE BLDG. DIST. NO. 2

PROFILE ALIGNMENT AND GRADE OF P.C. 6602
 SANITARY SEWERS PAGE 1

- NOTES:
1. PROVIDE STAKES ON THE PROPERTY LINE OR PROPERTY LINES PRODUCED AT RIGHT ANGLES TO THE SEWER LINE AT THE CENTER LINE OF EACH MANHOLE.
 2. NO REPRESENTATIVE OF THE COUNTY ENGINEER WILL SURVEY OR LAY OUT ANY PORTION OF THE WORK.
 3. THE PRIVATE ENGINEER SHALL FURNISH THE COUNTY ENGINEER WITH GRADE SHEETS AND STATIONING FOR ALL HOUSE LATERALS AND Y BRANCHES AND SHALL PROVIDE STAKES FOR THEM AT THEIR PROPER LOCATIONS WITH STATIONING PLAINLY MARKED. ALL HOUSE LATERALS SHALL BE CONSTRUCTED IN A STRAIGHT ALIGNMENT AT RIGHT ANGLES FROM THE MAIN LINE SEWER EXCEPT AS SHOWN ON THE PLANS. HOUSE LATERALS FROM CHIMNEYS SHALL NOT HAVE AN ANGLE OF LESS THAN 45° WITH THE MAIN LINE SEWER. ANY CHANGE IN ALIGNMENT SHALL BE REQUESTED IN WRITING BY THE PRIVATE ENGINEER.
 4. THE PRIVATE ENGINEER SHALL FURNISH THE HOUSE LATERAL DEPTH AT THE PROPERTY LINE BELOW THE TOP OF CURB ELEVATION FOR EACH HOUSE LATERAL ON THE GRADE SHEET.
 5. NO REVISIONS SHALL BE MADE IN THESE PLANS WITHOUT THE APPROVAL OF THE COUNTY ENGINEER.
 6. THE CONTRACTOR SHALL NOTIFY THE CONSTRUCTION DIVISION BY TELEPHONE, MADISON 9-4747, EXT. 81551, AT LEAST TWENTY-FOUR HOURS BEFORE STARTING ANY WORK UNDER THIS CONTRACT.
 7. MANHOLES SHALL BE BRICK SEWER STRUCTURES PER S-104. PRECAST CONCRETE MANHOLES PER S-135 OR S-173 MAY BE USED AS AN ALTERNATE IN LOCATIONS APPROVED BY THE COUNTY ENGINEER.
 8. USE STANDARD MANHOLE FRAMES AND COVERS, S-177, 4866P-AE-H0808.
 9. MANHOLE TOPS IN UNIMPROVED AREAS OF WAYS TO BE SIX INCHES ABOVE FINISHED GRADE.
 10. USE EXTRA STRENGTH PIPE. ALL PIPE IS STANDARD DEPTH EXCEPT AS NOTED.
 11. USE MECHANICAL COMPRESSION JOINTS FOR ALL V.C.P. JOINTS PER SPECS, SECT. 34, 48 & 49.
 12. IF A POWER POLE IS WITHIN THREE FEET OF THE SEWER, THE SEWER SHALL BE ENCASED, PER S-173, CASE III, TWO FEET ON EITHER SIDE FROM THE POINT OF INTERFERENCE.
 13. IF DURING THE COURSE OF CONSTRUCTION IT IS DETERMINED THAT THERE IS LESS THAN FOUR FEET OF COVER OVER THE TOP OF A MAIN LINE OR HOUSE LATERAL V.C.P. SEWER WHICH IS NOT INDICATED ON THE PLANS, THE PIPE SHALL BE ENCASED PER S-173, CASE III, UNLESS OTHERWISE APPROVED BY THE COUNTY ENGINEER.
 14. HOUSE LATERALS TO BE CONSTRUCTED WITH INVERTS AT PROPERTY LINE... FEET BELOW CURB GRADE 4866P-AE-H0808-14. RESURFACE ALL TRENCHES WITHIN PAVED AREAS TO MEET L.A. COUNTY ROAD DEPT. OR CALIFORNIA STATE HIGHWAY REQUIREMENTS IN ACCORDANCE WITH PERMITS.
 15. FOR ALLOWABLE LEAKAGE TEST USE FORMULA NO. 1, 2, 3, 4, 5, 6, 7, 8, 9, 10, 11, 12, 13, 14, 15, 16, 17, 18, 19, 20, 21, 22, 23, 24, 25, 26, 27, 28, 29, 30, 31, 32, 33, 34, 35, 36, 37, 38, 39, 40, 41, 42, 43, 44, 45, 46, 47, 48, 49, 50, 51, 52, 53, 54.
 16. "SEWERS IN FILLED GROUND"
 (a) NO CONSTRUCTION SHALL BE PERMITTED IN FILLED AREA UNLESS ACCEPTABLE CERTIFICATION IS SUBMITTED TO THE CONSTRUCTION DIVISION OF THE COUNTY ENGINEER'S DEPARTMENT THAT RELATIVE CONTRACTION IS GREATER THAN 80%.
 (b) IF CONTRACTION IS LESS THAN 80% THE SEWER MUST BE ENCASED AS SHOWN IN THE PLANS PER S-106 OR A SPECIAL BASE COURSE PER S-107 (75' C.A.B. 8). SPECIAL MANHOLE BASES MUST BE INSTALLED PER S-109 AS INDICATED ON THE PLANS.
 (c) IF CONTRACTION IS GREATER THAN 80% NEITHER ENCASEMENT NOR SPECIAL MANHOLE BASES WILL BE REQUIRED.
 (d) ALL PIPES TO BE IN PLACE BEFORE SEWERS ARE CONSTRUCTED.
 (e) ALL STATE AND LOCAL TRENCH SAFETY ORDERS WILL BE RIGIDLY ENFORCED.

TRACT No. 27513
 PRIVATE CONTRACT NO. 6602
 W.S. 37
 3 SHEETS, 5 PAGES
 SCALE: VERT. 1" = 8'
 HORIZ. 1" = 40'
 MAY 1, 1963
 PREPARED IN THE OFFICES OF
 AMCO ENGINEERS
 8844 W. OLYMPIC BLVD. B.H.
 BY: J. GEORGE ARAUJO REG. C.E. NO. 11467
 FOR LEGEND SEE PLAN NO. S-64

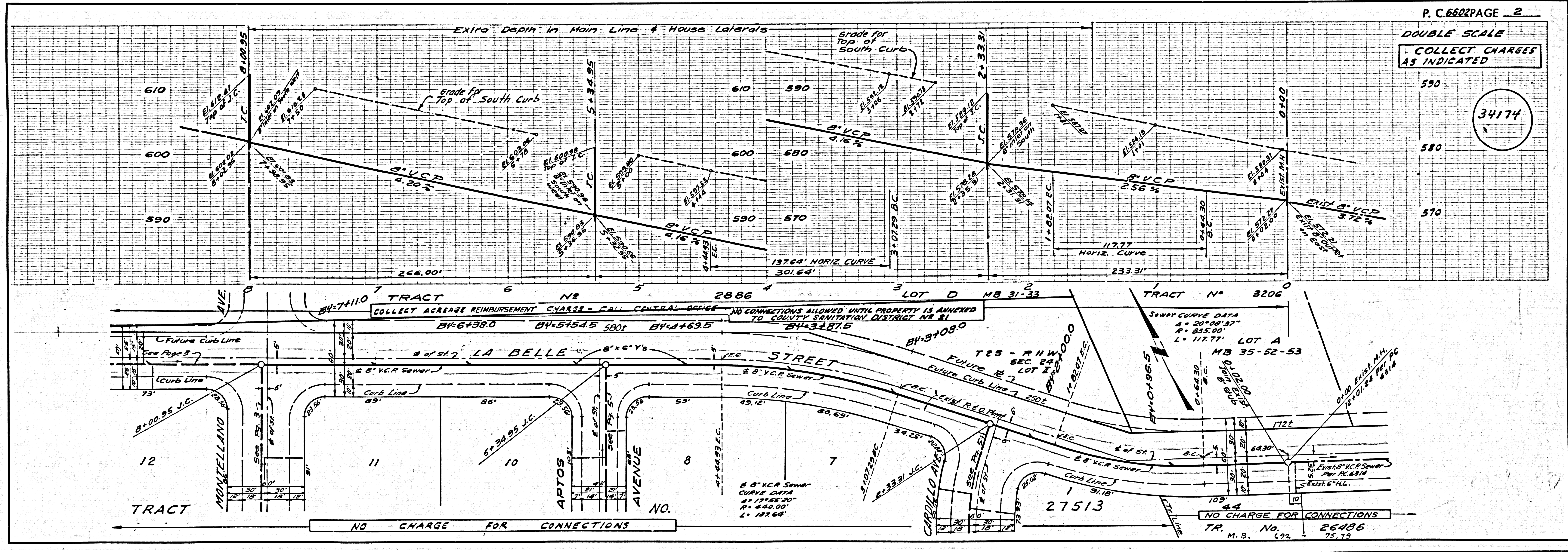
NOTE:
 GRADES TO WHICH THIS IMPROVEMENT IS TO BE CONSTRUCTED ARE SHOWN ON PLANS AND PROFILES. GRADE POINTS FOR TOP OF CURBS, CENTER LINE OF STREETS, OR CENTER LINE OF ALLEYS ARE SHOWN BY CIRCLES ON PROFILES. AT ALL POINTS BETWEEN DESIGNATED POINTS THE GRADE SHALL BE ESTABLISHED SO AS TO CONFORM TO A STRAIGHT LINE DRAWN BETWEEN SAID DESIGNATED POINTS. ELEVATIONS ARE IN FEET ABOVE U.S.C. & G.S. SEA LEVEL DATUM OF 1929. THIS DRAWING AND THE DATA HEREON ARE HEREBY MADE A PART OF THE SPECIFICATIONS. WORK SHALL BE CONSTRUCTED ACCORDING TO STANDARD SPECIFICATIONS DATED 10/22/56, ON FILE IN THE OFFICE OF THE COUNTY ENGINEER AND SHALL BE PROTECTED ONLY IN THE PRESENCE OF THE COUNTY ENGINEER. BEFORE WORK CAN BE STARTED, THE CONTRACTOR MUST OBTAIN A PERMIT TO EXCAVATE IN COUNTY STREETS FROM THE L.A. COUNTY ROAD DEPT., DISTRICT OFFICE NO. 1, AND PAY A FEE TO THE COUNTY ENGINEER, ROOM 280, COUNTY ENGINEERING BUILDING, 108 WEST SECOND STREET OR SAN 214477. REGIONAL OFFICE, SUFFICIENT TO COVER THE COST OF CONSTRUCTION INSPECTION AND RECORD PLANS. APPROVAL OF THIS PLAN BY THE COUNTY OF LOS ANGELES DOES NOT CONSTITUTE A REPRESENTATION AS TO THE ACCURACY OF THE LOCATION OF OR THE EXISTENCE OR NON-EXISTENCE OF ANY UNDERGROUND UTILITY PIPE, OR STRUCTURE WITHIN THE LIMITS OF THIS PROJECT. THIS NOTE APPLIES TO ALL PAGES. IF WORK IS TO BE DONE IN A STATE HIGHWAY, A PERMIT MUST BE OBTAINED FROM THE STATE OF CALIFORNIA, DIVISION OF HIGHWAYS, 120 SOUTH SPRING STREET, LOS ANGELES, CALIFORNIA.

COUNTY OF LOS ANGELES, CALIFORNIA
 JOHN A. LAMBIE, COUNTY ENGINEER
 J. D. PARKHURST, CHIEF ENGINEER
 CO. SAN. DIST. NO. 27
 APPROVED BY: [Signature] ASSISTANT SANITATION ENGINEER
 APPROVED BY: [Signature] OFFICE ENGINEER
 SUBMITTED BY: [Signature] SAN. DIST. NO. 27 REGIONAL ENGINEER
 CHECKED BY: [Signature] REG. C.E. NO. 92043

COLLECT CHARGES AS INDICATED
 PR Smith 9-16-63

NO CONNECTIONS FOR THE DISPOSAL UP INDUSTRIAL WASTES SHALL BE MADE TO SEWERS SHOWN ON THESE DRAWINGS WITHOUT WRITTEN PERMISSION FROM THE CHIEF ENGINEER AND GENERAL MANAGER OF THE COUNTY SANITATION DISTRICTS.

I.N. 0360-56

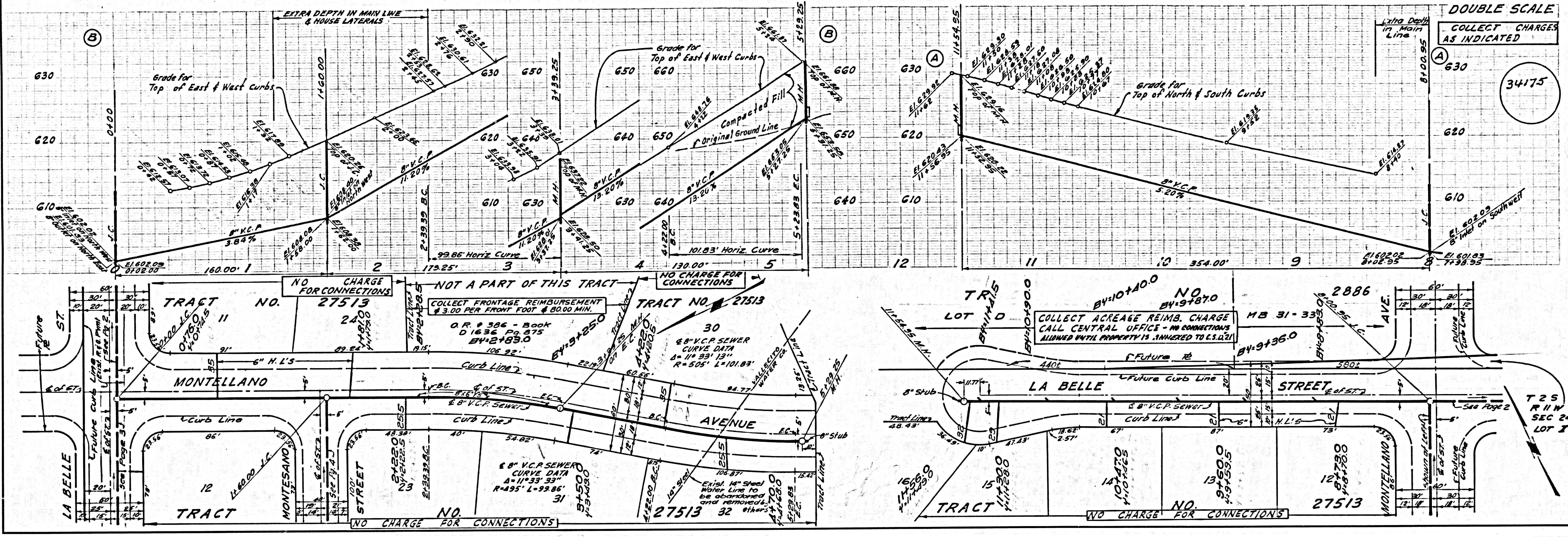


P.C. 6602 PAGE 2
 DOUBLE SCALE
 COLLECT CHARGES AS INDICATED

34174

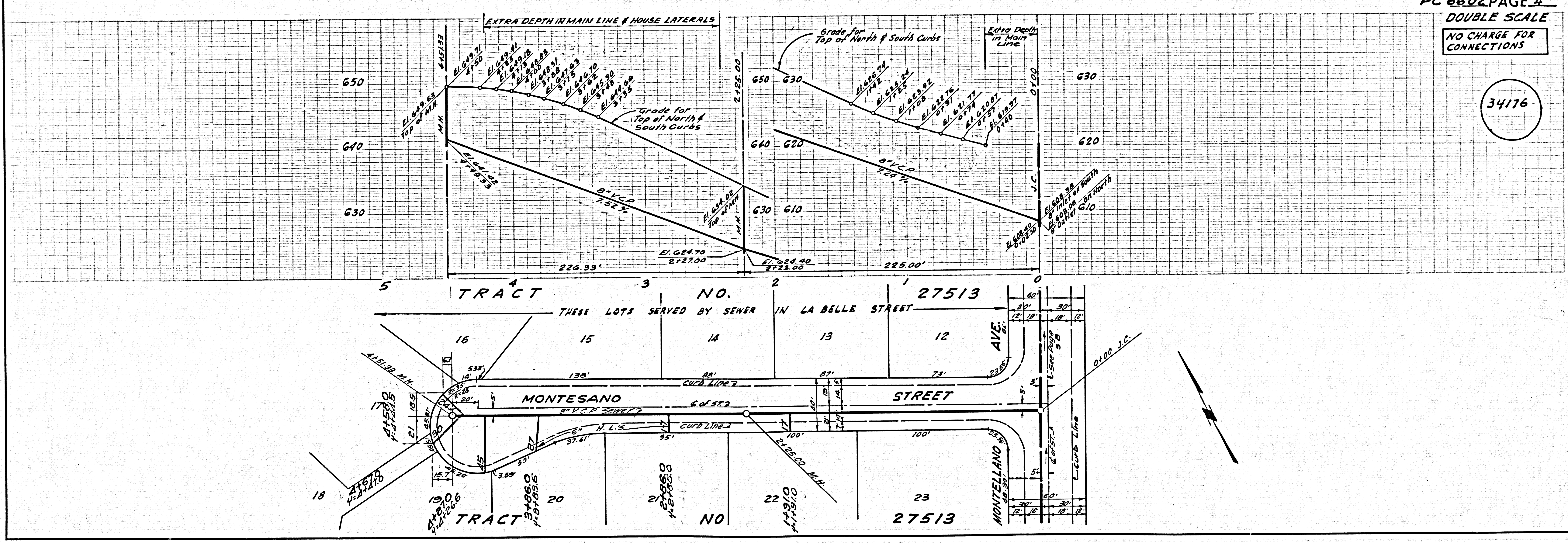
COLLECT CHARGES AS INDICATED

34175



NO CHARGE FOR CONNECTIONS

34176



DOUBLE SCALE
NO CHARGES
FOR CONNECTIONS

