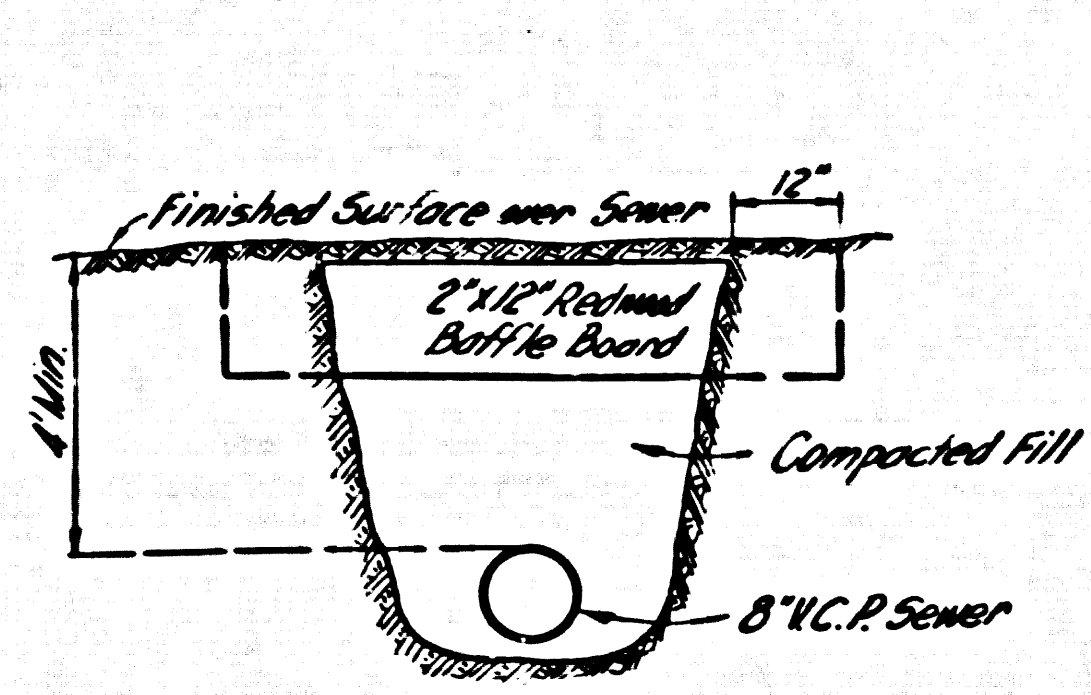


B.M. S.Y. 4371 ELEV. 1033.195
 S.P.K. & L. in Curb 2' 40" N'ly of C/L
 HAWTHORNE Blvd. 1' 5" N'ly of Curb
 RET. on Island 1' 54" N'ly of C/L
 SHOREWOOD Avenue.
 Palos Verdes QUAD. 19.60



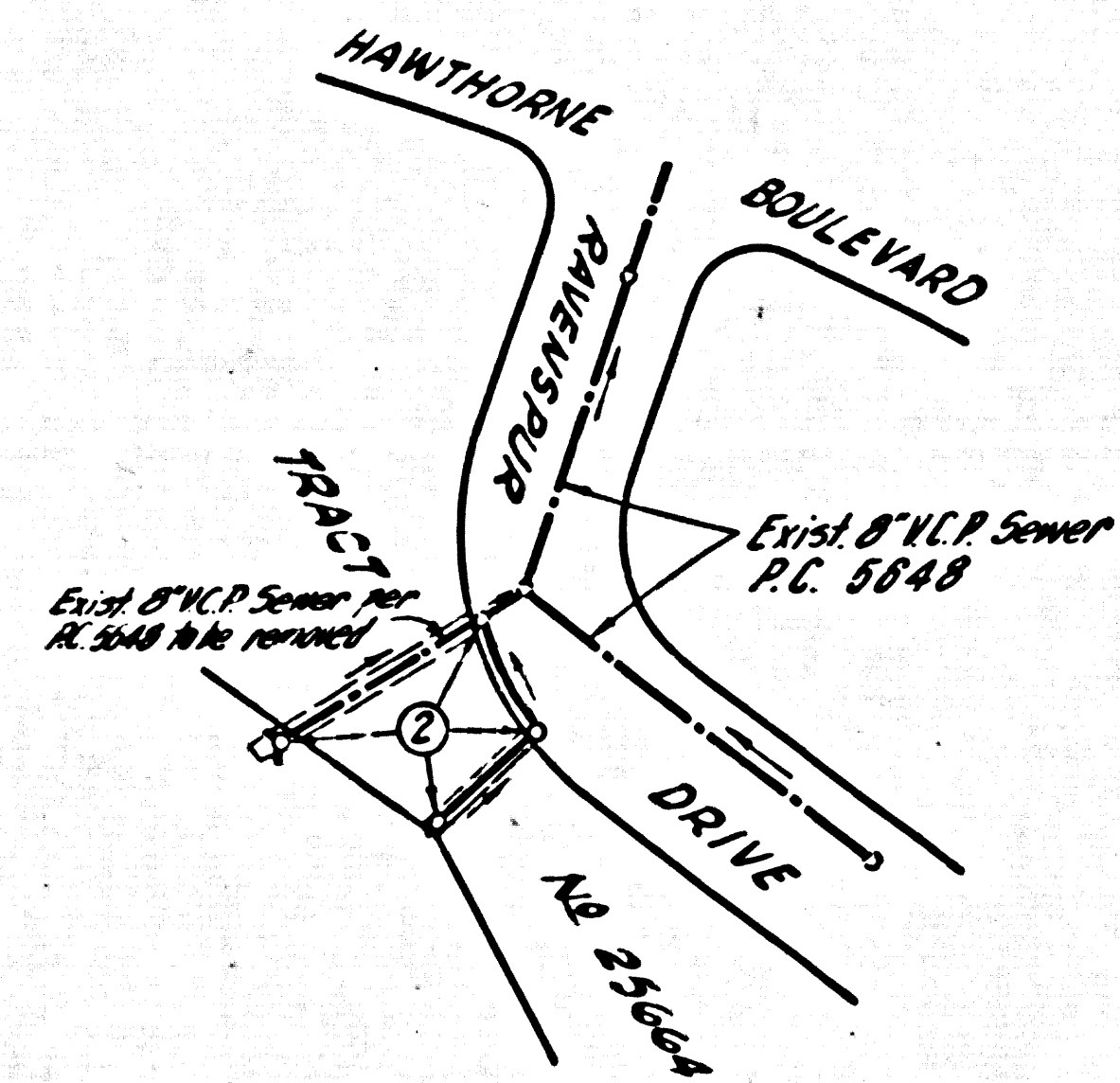
BAFFLE BOARD DETAIL
 NO SCALE

NOTES:

1. Each end of baffle board will extend one foot into undisturbed ground.
2. The upper layer of backfill to be one foot minimum top soil. Top soil shall be tamped in place and seeded with rye grass seed and adequately watered until growth is restored.
3. Baffle boards shall be spaced so that the top of the lower board shall be level with the bottom of the next higher board.

**PRIVATE ENGINEER'S
 NOTICE TO CONTRACTOR**

THE EXISTENCE AND LOCATION OF ANY UNDERGROUND UTILITY PIPES (INCLUDING BUT NOT LIMITED TO WATER, GAS, TELEPHONE, CABLE, ETC.) SHOWN ON THESE PLANS ARE OBTAINED BY A SEARCH OF THE AVAILABLE RECORDS TO THE BEST OF OUR KNOWLEDGE. THERE ARE NO EXISTING UTILITIES EXCEPT AS SHOWN ON THESE PLANS. THE CONTRACTOR IS RESPONSIBLE TO TAKE PRECAUTIONARY MEASURES TO PROTECT THE UTILITY LINES SHOWN AND ANY OTHER LINES NOT OF RECORD OR NOT SHOWN ON THIS DRAWING.



**INDEX MAP
 EASEMENT SOUTH OF
 RAVENSPUR DRIVE
 P.C. 6612
 SCALE 1"=100'**

**DOUBLE SCALE
 LOMITA BLDG. DIST. NO. 12**

PROFILE ALIGNMENT AND GRADE OF
SANITARY SEWERS P.C. 6612
 PAGE 1

TO BE CONSTRUCTED IN
**EASEMENT SOUTH OF
 RAVENSPUR DRIVE
 PRIVATE CONTRACT NO. 6612**

W.S. 27
 1 SHEET, 2 PAGES
 SCALE: HORIZ. 1"=80' VERT. 1"=8'
 MAY 1963
 PREPARED IN THE OFFICES OF
ENGINEERING SERVICE CORP.
 BY: *P. J. Koenig*
 REG. C. E. NO. 3692

36434

- NOTES:**
1. PROVIDE STAKES ON THE PROPERTY LINE OR PROPERTY LINES PRODUCED AT 90° ANGLES TO THE SEWER LINE AT THE CENTER LINE OF EACH MANHOLE.
 2. NO REPRESENTATIVE OF THE COUNTY ENGINEER WILL SURVEY OR LAY OUT ANY PORTION OF THE WORK.
 3. THE PRIVATE ENGINEER SHALL FURNISH THE COUNTY ENGINEER WITH GRADE SHEETS AND STATIONING FOR ALL HOUSE LATERALS AND Y BRANCHES AND SHALL PROVIDE STAKES FOR THEM AT THEIR PROPER LOCATIONS WITH STATIONING PLAINLY MARKED. ALL HOUSE LATERALS SHALL BE CONSTRUCTED IN A STRAIGHT ALIGNMENT AT RIGHT ANGLES FROM THE MAIN LINE SEWER EXCEPT AS SHOWN ON THE PLANS. HOUSE LATERALS FROM CHIMNEYS SHALL NOT HAVE AN ANGLE OF LESS THAN 45° WITH THE MAIN LINE SEWER. ANY CHANGE IN ALIGNMENT SHALL BE REQUESTED IN WRITING BY THE PRIVATE ENGINEER.
 4. NO REVISIONS SHALL BE MADE IN THESE PLANS WITHOUT THE APPROVAL OF THE COUNTY ENGINEER.
 5. THE CONTRACTOR SHALL NOTIFY THE CONSTRUCTION DIVISION BY TELEPHONE, MADISON 9-4747, EXT. 81331, AT LEAST TWENTY-FOUR HOURS BEFORE STARTING ANY WORK UNDER THIS CONTRACT.
 6. MANHOLES SHALL BE BRICK SEWER STRUCTURES PER S-304. PRECAST CONCRETE MANHOLES PER S-315 OR S-173 MAY BE USED AS AN ALTERNATE IN LOCATIONS APPROVED BY THE COUNTY ENGINEER.
 7. USE STANDARD MANHOLE FRAMES AND COVERS, S-317.
 8. MANHOLE TOPS IN UNIMPROVED RIGHTS OF WAY TO BE SIX INCHES ABOVE FINISHED GRADE.
 9. USE EXTRA STRENGTH PIPE. ALL PIPE IS STANDARD DEPTH.
 10. USE MECHANICAL COMPRESSION JOINTS FOR ALL V.C.P. JOINTS PER SPEC'S, SECS. 56 & 48.
 11. IF A POWER POLE IS WITHIN THREE FEET OF THE SEWER, THE SEWER SHALL BE ENCASED, PER S-172, CASE III, TWO FEET ON EITHER SIDE FROM THE POINT OF INTERFERENCE.
 12. IF DURING THE COURSE OF CONSTRUCTION IT IS DETERMINED THAT THERE IS LESS THAN FOUR FEET OF COVER OVER THE TOP OF A MAIN LINE SEWER, THE PIPE SHALL BE ENCASED PER S-172, CASE III, UNLESS OTHERWISE APPROVED BY THE COUNTY ENGINEER.
 13. RESURFACE ALL FINISHED PAVED AREAS TO MEET L.A. COUNTY ROAD DEPT. REQUIREMENTS IN ACCORDANCE WITH PERMITS.
 14. FOR ALLOWABLE LEAKAGE TEST USE FORMULA NO. 1, SPEC'S, SEC. 54.
 15. ALL STATE AND LOCAL TRENCH SAFETY ORDERS WILL BE RIGIDLY ENFORCED.
 16. SEWER TRENCH SHALL BE BACKFILLED TO A MINIMUM OF 90% OF ORIGINAL DENSITY IN ACCORDANCE WITH STANDARD METHOD OF TEST D 998-577 ASTM.

NO CONNECTIONS FOR THE DISPOSAL OF INDUSTRIAL WASTES SHALL BE MADE TO SEWERS SHOWN ON THESE DRAWINGS WITHOUT WRITTEN PERMISSION FROM THE CHIEF ENGINEER AND GENERAL MANAGER OF THE COUNTY SANITATION DISTRICTS.

**COLLECT CHARGES
 AS INDICATED**

John H. Mahan 7/14/64

NOTE:
 GRADES TO WHICH THIS IMPROVEMENT IS TO BE CONSTRUCTED ARE SHOWN ON PLANS AND PROFILES. GRADE POINTS FOR TOP OF CURBS, CENTER LINE OF STREETS, OR CENTER LINE OF ALLEYS ARE SHOWN BY CIRCLES ON PROFILES. AT ALL POINTS BETWEEN DESIGNATED POINTS THE GRADE SHALL BE ESTABLISHED SO AS TO CONFORM TO A STRAIGHT LINE DRAWN BETWEEN SAID DESIGNATED POINTS. ELEVATIONS ARE IN FEET ABOVE U.S.C. & G.S. SEA LEVEL DATUM OF 1929.
 THIS DRAWING AND THE DATA HEREON ARE HEREBY MADE A PART OF THE SPECIFICATIONS.
 WORK SHALL BE CONSTRUCTED ACCORDING TO STANDARD SPECIFICATIONS DATED MAY 23, 1962, ON FILE IN THE OFFICE OF THE COUNTY ENGINEER AND SHALL BE PROSECUTED ONLY IN THE PRESENCE OF THE COUNTY ENGINEER.
 BEFORE WORK CAN BE STARTED, THE CONTRACTOR MUST OBTAIN A PERMIT TO EXCAVATE IN COUNTY STREETS FROM THE L.A. COUNTY ROAD DEPT., DISTRICT OFFICE NO. 3, AND PAY A FEE TO THE COUNTY ENGINEER, ROOM 300, COUNTY ENGINEERS BUILDING, 108 WEST SECOND STREET OR 441-09. HEARS, GENT/1024, 10A L.E.T., REGIONAL OFFICE, SUFFICIENT TO COVER THE COST OF CONSTRUCTION INSPECTION AND RECORD PLANS.
 APPROVAL OF THIS PLAN BY THE COUNTY OF LOS ANGELES DOES NOT CONSTITUTE A REPRESENTATION AS TO THE ACCURACY OF THE LOCATION OF OR THE EXISTENCE OR NON-EXISTENCE OF ANY UNDERGROUND UTILITY PIPE, OR STRUCTURE WITHIN THE LIMITS OF THIS PROJECT. THIS NOTE APPLIES TO ALL PAGES.
 IF WORK IS TO BE DONE IN A STATE HIGHWAY, A PERMIT MUST BE OBTAINED FROM THE STATE OF CALIFORNIA, DIVISION OF HIGHWAYS, 130 SOUTH SPRING STREET, LOS ANGELES, CALIFORNIA.

COUNTY OF LOS ANGELES, CALIFORNIA
 JOHN A. LAMBIE, COUNTY ENGINEER
 J. D. PARKHURST, CHIEF ENGINEER
 CO. SAN. DIST. NO. 12

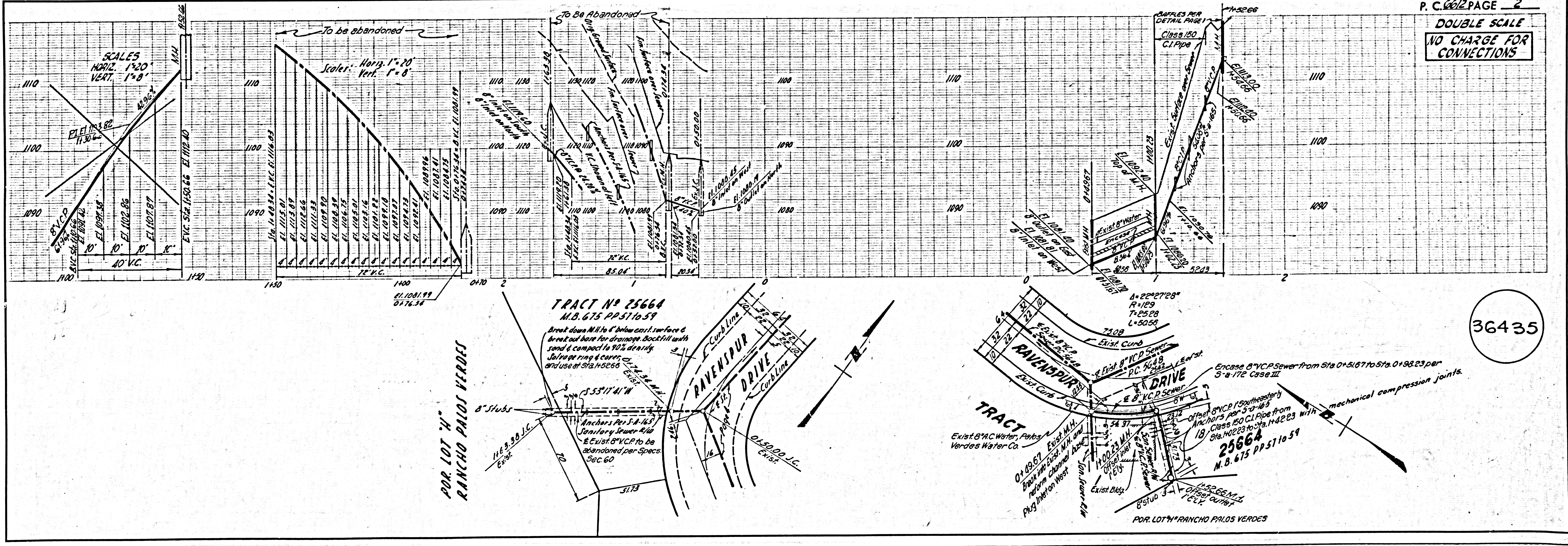
APPROVED BY: *John H. Mahan*
 REGIONAL ENGINEER

APPROVED BY: *J. D. Parkhurst*
 OFFICE ENGINEER

SUBMITTED BY: *John H. Mahan*
 REGIONAL ENGINEER

CHECKED BY: *John H. Mahan*
 REG. C. E. NO. 12443

J. N. 036063



P.C. 6612 PAGE 2
**DOUBLE SCALE
 NO CHARGE FOR
 CONNECTIONS**

36435