

**INDEX MAP**  
SCALE: 1"=600'  
TRACT NO 26127  
P.C. NO 6614

**BENCH MARK**  
S.G. 2128 ELEV 762.790 1955 Adj.  
Top in West Curb of Diamond Bar Blvd.  
± 2 Ft. W of BCR @ NW Cor of Diamond Bar Blvd. & Golden Springs Drive.  
± 40 Ft. N. & ± 69 Ft. W of Int.

All underground utilities or structure reported by the owner or others and those shown on the records examined are indicated with their approximate location and extent. The owner by accepting these plans or proceeding with improvements pursuant thereto agrees to assume liability and to hold undersigned harmless for any damages resulting to the existence of the underground utilities or structures not reported to the undersigned, not indicated on the public records examined, located at variance with that reported or shown on records examined.

The contractor is required to take due precautionary measures to protect the utilities or structures shown and any other utilities or structures found at the site. It shall be the Contractor's responsibility to notify the owners of the utilities or structures concerned before starting work.

*W.C. Holzhauser*  
W.C. HOLZHAUSER, R.C.E. NO 10719

**COLLECT CHARGES AS INDICATED**

*Harold S. Anderson*

**DOUBLE SCALE**  
**SAN DIMAS BLDG. DIST. NO.10**

- NOTES:**
1. PROVIDE STAKES ON THE PROPERTY LINE OR PROPERTY LINES PRODUCED AT RIGHT ANGLES TO THE SEWER LINE AT THE CENTER LINE OF EACH MANHOLE.
  2. NO REPRESENTATIVE OF THE COUNTY ENGINEER WILL SURVEY OR LAY OUT ANY PORTION OF THE WORK.
  3. THE PRIVATE ENGINEER SHALL FURNISH THE COUNTY ENGINEER WITH GRADE SHEETS AND STATIONING FOR HOUSE LATERALS AND 10' BENCH MARKS. PROVIDE STAKES FOR THEM AT THEIR PROPER LOCATIONS WITH STATIONING PLAINLY MARKED. ALL HOUSE LATERALS SHALL BE CONSTRUCTED IN A STRAIGHT LINE FROM THE MANHOLE TO THE HOUSE. ALL HOUSE LATERALS SHALL BE CONSTRUCTED WITH A MINIMUM OF ONE (1) TURN. ALL HOUSE LATERALS SHALL BE CONSTRUCTED WITH A MINIMUM OF ONE (1) TURN. ALL HOUSE LATERALS SHALL BE CONSTRUCTED WITH A MINIMUM OF ONE (1) TURN. ALL HOUSE LATERALS SHALL BE CONSTRUCTED WITH A MINIMUM OF ONE (1) TURN.
  4. THE PRIVATE ENGINEER SHALL FURNISH THE HOUSE LATERAL DEPTH AT THE PROPERTY LINE BELOW THE TOP OF CURB ELEVATION FOR EACH HOUSE LATERAL ON THE GRADE SHEET.
  5. NO REVISIONS SHALL BE MADE IN THESE PLANS WITHOUT THE APPROVAL OF THE COUNTY ENGINEER.
  6. USE STANDARD MANHOLE FRAMES AND COVERS S-117.
  7. USE EXTRA STRENGTH PIPE. ALL PIPE IS STANDARD DEPTH EXCEPT AS NOTED.
  8. USE CEMENT MORTAR OR MECHANICAL COMPRESSION JOINTS FOR ALL V.C.P. JOINTS IN MAIN LINE PER SPECS, SECS 36 & 40. REUSE ALL TRENCH WITHIN PAVED AREA TO MEET L.A. COUNTY ROAD DEPT. OR CALIF. STATE HIGHWAY REQUIREMENTS IN ACCORDANCE WITH PERMITS.
  9. IN A HOUSE LATERAL WITHIN THREE FEET OF THE SEWER, THE SEWER SHALL BE ENCASED PER S-A-172 CASE II, TWO FEET ON EITHER SIDE FROM THE POINT OF INTERFERENCE.
  10. HOUSE LATERALS TO BE CONSTRUCTED WITH INVERTS AT PROPERTY LINE ± FEET BELOW CURB GRADE.
  11. MANHOLES SHALL BE BRICK SEWER STRUCTURES PER S-A-104. PRECAST CONCRETE MANHOLES PER S-A-185 OR S-A-178 MAY BE USED AS AN ALTERNATE. IN LOCATIONS APPROVED BY THE COUNTY ENGINEER.
  12. FOR ALLOWABLE LEAKAGE TEST USE FORMULA NO. 1, SPECS, SEC. 54.
  13. MANHOLE TOPS IN UNIMPROVED RIGHTS-OF-WAY TO BE SIX INCHES ABOVE FINISHED GRADE.
  14. THE CONTRACTOR SHALL NOTIFY THE CONSTRUCTION DIVISION BY TELEPHONE, MADISON 3-470, EX-1855 AT LEAST TWENTY-FOUR HOURS BEFORE STARTING ANY WORK UNDER THIS CONTRACT.
  15. WERE EVER GROUND WATER IS ENCOUNTERED DURING THE COURSE OF THE SEWER THE V.C.P. JOINTS SHALL BE OF JUMP COMPOUND PER SPECS, SEC. 36 & 40 OR MECHANICAL COMPRESSION JOINTS PER SPECS, SEC. 36 & 40.
  16. DURING THE COURSE OF CONSTRUCTION IT IS DETERMINED THAT THERE IS LESS THAN FOUR FEET OF COVER OVER THE TOP OF MAIN LINE OR HOUSE LATERAL V.C.P. SEWER WHICH IS NOT INDICATED ON THE PLANS, THE PIPE SHALL BE ENCASED PER S-A-172 CASE II, UNLESS OTHERWISE SPECIFIED BY COUNTY ENGINEER.
  17. SEWERS IN UNDER GROUND:
    - (A) NO CONSTRUCTION WILL BE PERMITTED IN ALL AREAS UNLESS ACCEPTABLE CERTIFICATION IS SUBMITTED TO THE CONSTRUCTION DIV. OF THE COUNTY ENGINEER'S DEPT. THAT RELATIVE CONTRACTION IS GREATER THAN 50%.
    - (B) IF CONTRACTION IS LESS THAN 50% THE SEWER MUST BE ENCASED AS SHOWN ON PLANS PER S-A-172 OR HAVE A SPECIAL BASE COURSE PER S-A-172 CASE II, SPECIAL MANHOLE BASE MUST BE INSTALLED PER S-A-172 CASE II, UNLESS OTHERWISE SPECIFIED BY COUNTY ENGINEER.
    - (C) IN CONSTRUCTION IS GREATER THAN 50% NOTIFY CEILING AND SPECIAL MANHOLE BASES WILL BE INSTALLED PER S-A-172 CASE II, UNLESS OTHERWISE SPECIFIED BY COUNTY ENGINEER.
  18. USE MECHANICAL COMPRESSION JOINTS FOR ALL V.C.P. HOUSE LATERALS PER SPECS, SECS 36 & 40.
  19. ALL STATE AND LOCAL TRENCH SAFETY ORDERS WILL BE RIGIDLY ENFORCED.

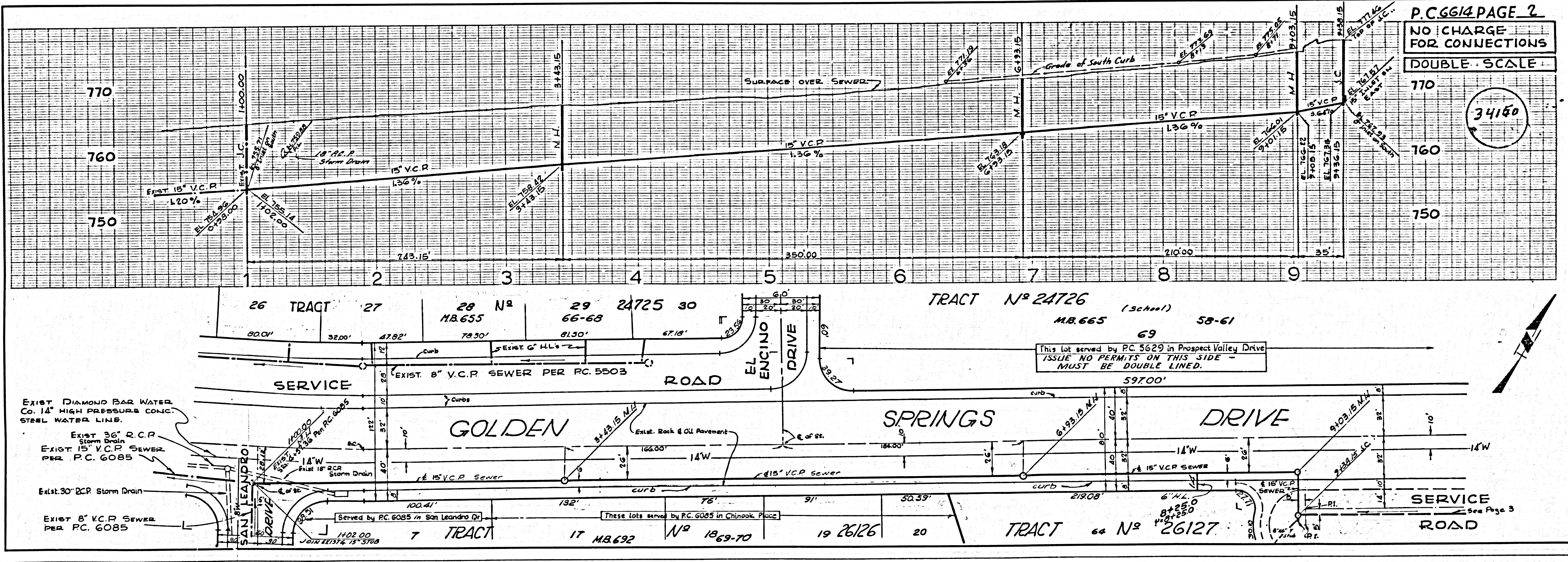
NO CONNECTIONS FOR THE DISPOSAL OF INDUSTRIAL WASTES SHALL BE MADE TO SEWERS SHOWN ON THESE DRAWINGS WITHOUT WRITTEN PERMISSION FROM THE CHIEF ENGINEER AND GENERAL MANAGER OF THE COUNTY SANITATION DISTRICTS.

**TRACT No 26127**  
**PRIVATE CONTRACT NO. 6614**

W.S. 39  
4 SHEETS; 7 PAGES  
SCALE: VERT. 1"=6'  
HORIZ. 1"=40'  
MAY, 1963  
PREPARED IN THE OFFICES OF  
*Dutch Holzhauser and Associates*  
7 W. Holman Ave., Alhambra, California CA 92251  
BY: *W.C. Holzhauser*  
REG. C. E. NO. 10719  
FOR LEGEND SEE PLAN NO. S-A-64

**NOTE:**  
GRADES TO WHICH THIS IMPROVEMENT IS TO BE CONSTRUCTED ARE SHOWN ON PLANS AND PROFILES. GRADE POINTS FOR TOP OF CURB, CENTER LINE OF STREETS, OR CENTER LINE OF ALLEYS ARE SHOWN BY CIRCLES ON PROFILES. AT ALL POINTS BETWEEN DESIGNATED POINTS THE GRADE SHALL BE ESTABLISHED SO AS TO CONFORM TO A STRAIGHT LINE DRAWN BETWEEN SAID DESIGNATED POINTS.  
ELEVATIONS ARE IN FEET ABOVE U.S.C. & G.S. SEA LEVEL DATUM OF 1929.  
THIS DRAWING AND THE DATA HEREON ARE HEREBY MADE A PART OF THE SPECIFICATIONS. THE COUNTY ENGINEER'S OFFICE SHALL BE CONSIDERED AS THE AUTHORITY FOR THE LOCATION OF OR THE EXISTENCE OR NON-EXISTENCE OF ANY UNDERGROUND UTILITY PIPE OR STRUCTURE WITHIN THE LIMITS OF THIS PROJECT. THIS NOTE APPLIES TO ALL PAGES.  
IF WORK IS TO BE DONE IN A STATE HIGHWAY, A PERMIT MUST BE OBTAINED FROM THE STATE OF CALIFORNIA, DIVISION OF HIGHWAYS, 120 SOUTH SPRING STREET.

**COUNTY OF LOS ANGELES, CALIFORNIA**  
APPROVED, JOHN A. LAMBE, COUNTY ENGINEER  
APPROVED, J.D. PARKHURST, CHIEF ENGINEER  
BY: *W.C. Holzhauser* SANITATION ENGINEER  
BY: *J.D. Parkhurst* CHIEF ENGINEER  
SUBMITTED BY: *P.F. Vorhies* REG. E.N. # 11636  
SAN DIMAS REGIONAL OFFICE 7-18-63  
CHECKED BY: *St. Nida* 7-19-63  
REG. C. E. NO. 3446  
J.N. 0360.65

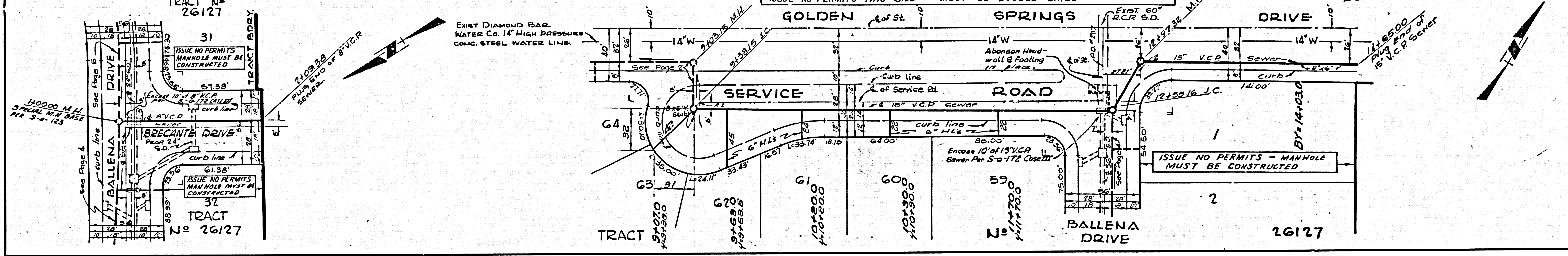
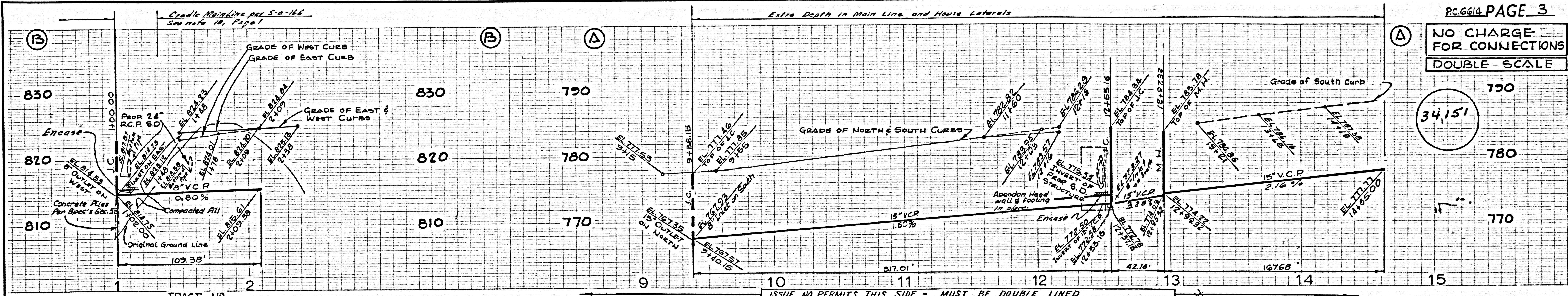


**P.C. 6614 PAGE 2**  
**NO CHARGE FOR CONNECTIONS**  
**DOUBLE SCALE**

34150

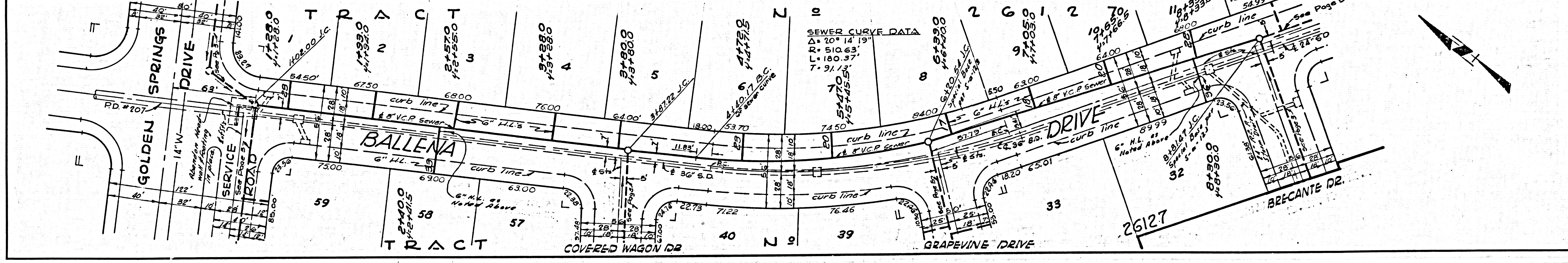
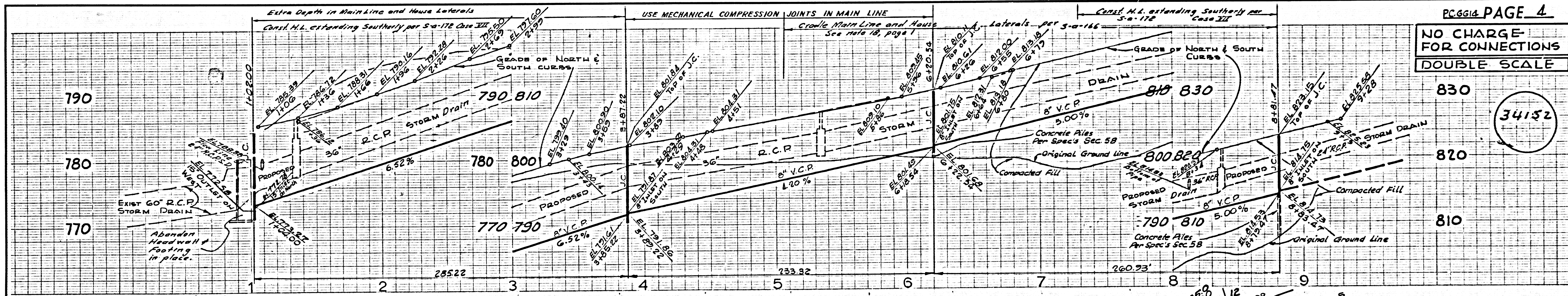
NO CHARGE FOR CONNECTIONS  
DOUBLE SCALE

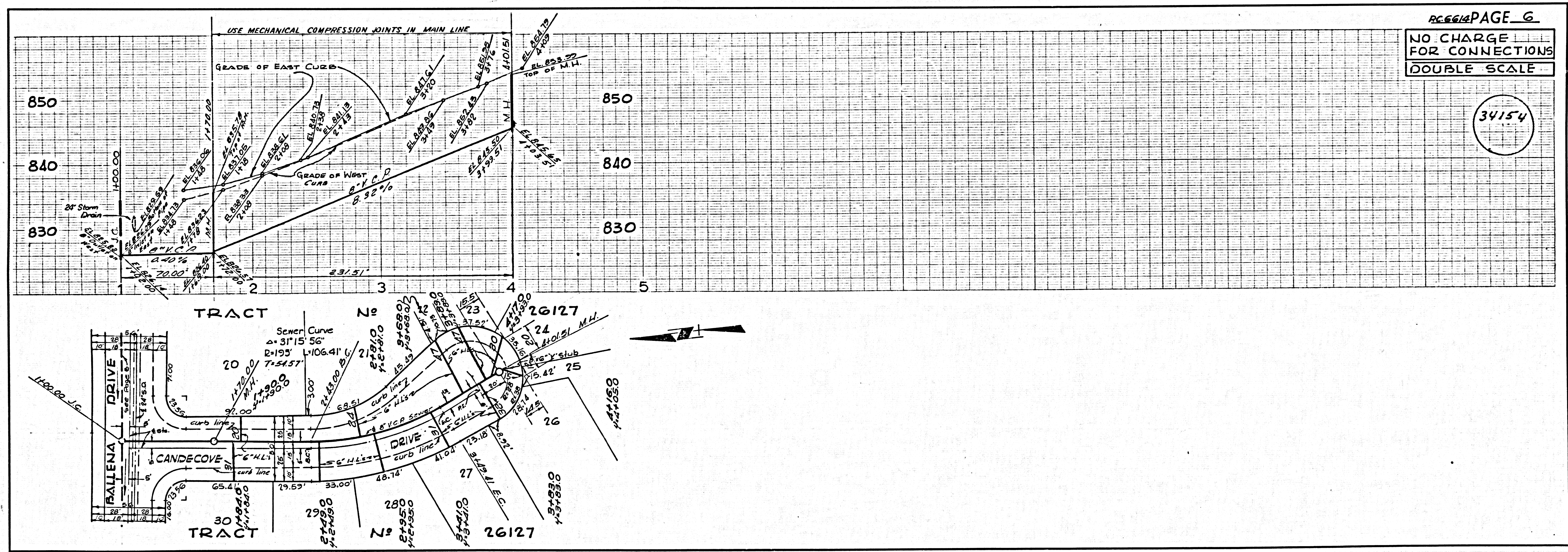
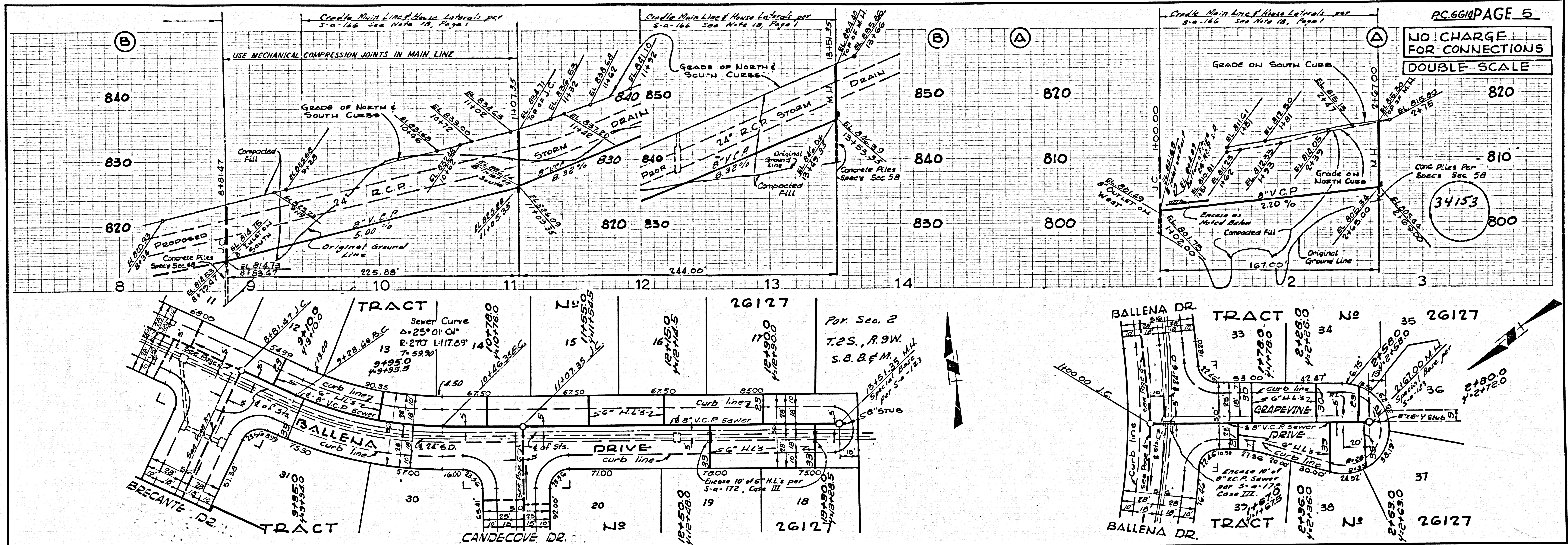
34151



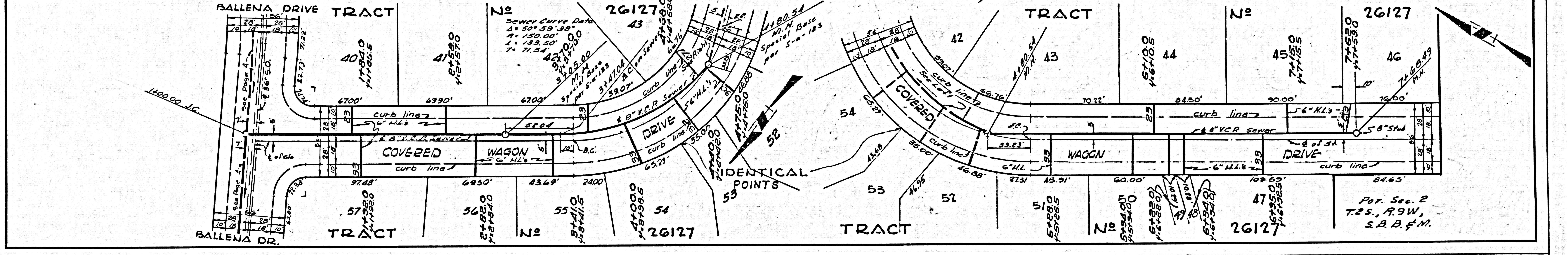
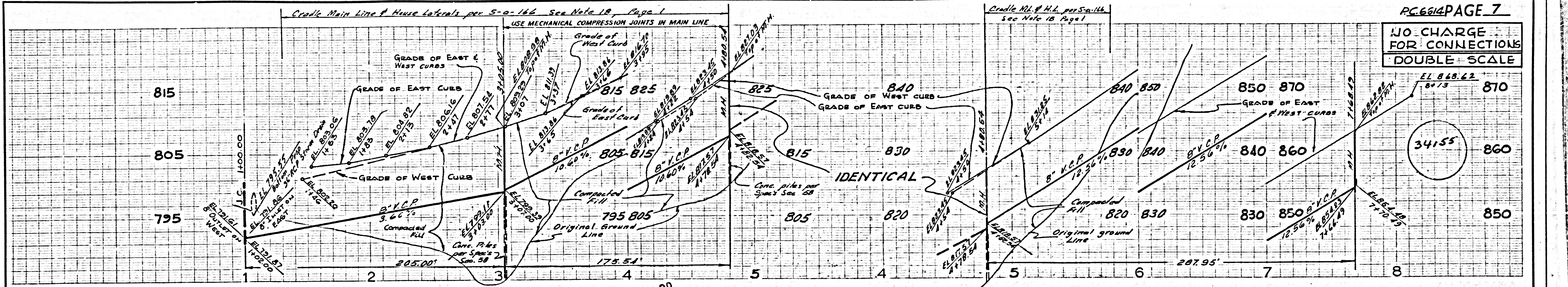
NO CHARGE FOR CONNECTIONS  
DOUBLE SCALE

34152





NO CHARGE FOR CONNECTIONS  
DOUBLE SCALE



E. E. 100 L.A. COUNTY SEWER SHEET NO. 2 SO. CAL. BLUEPRINT CO.