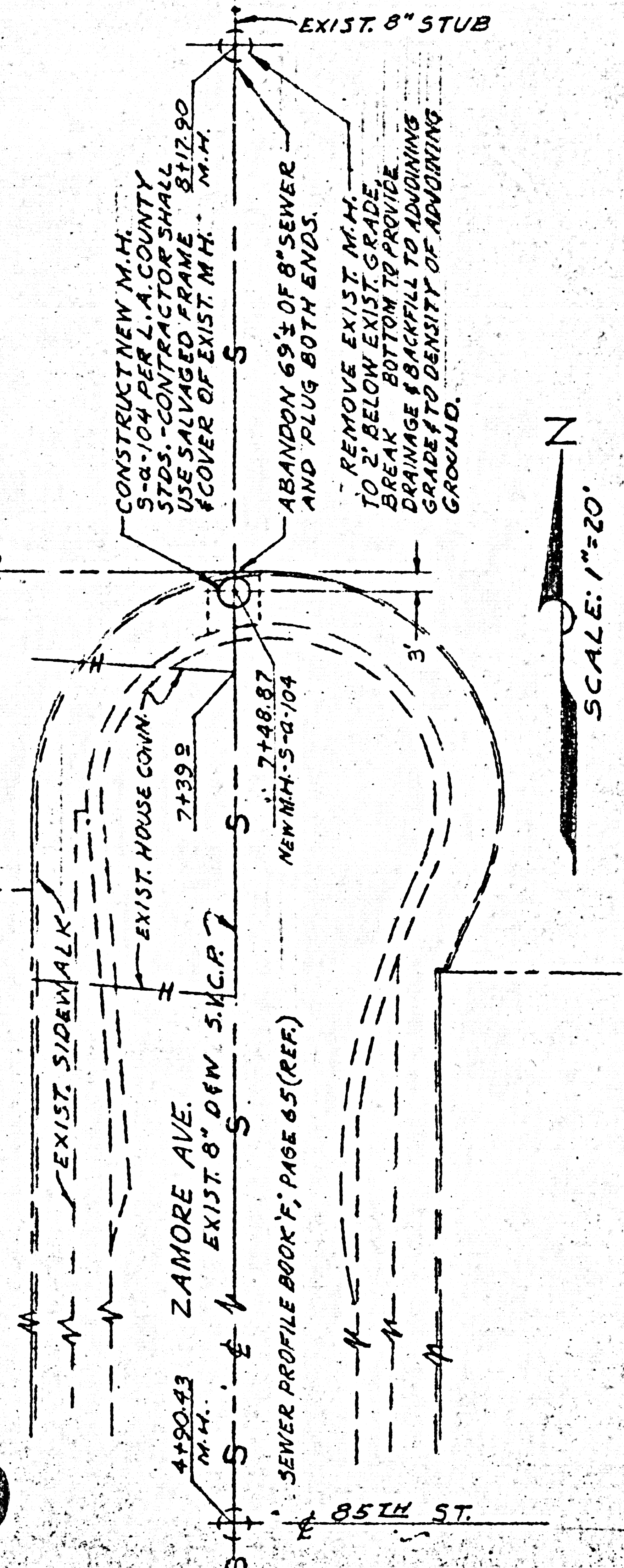


LEGEND

- CENTER LINE ————
- PROPERTY LINE ————
- HOUSE CONNECTION LINE ————
- EXIST. SEWER LINE ————
- MANHOLE M.H.

NOTES

1. ALL WORK SHALL CONFORM TO THE LOS ANGELES COUNTY STANDARD SPECIFICATION.
2. THE CONTRACTOR SHALL REMOVE PORTION OF CONCRETE WALK FOR MANHOLE CONSTRUCTION.
3. CONTRACTOR SHALL REPLACE CONCRETE WALK TO MATCH EXIST WALK IN TEXTURE AND COLOR.
4. CONTRACTOR SHALL REUSE EXIST. M.H. FRAME AND COVER. TOP OF COVER SHALL BE FLUSH WITH SIDEWALK.
5. MANHOLE DEPTH TO FLOW LINE APPROX. 11.5 FEET.
6. CONTRACTOR SHALL SECURE A COUNTY OF L.A. PERMITS REQUIRED FOR THE M.H. CONSTRUCTION.
7. CONTRACTOR SHALL SUBMIT SEVEN DRAWING TO THE COUNTY OF L.A. WHEN SECURING PERMIT.



N
SCALE: 1"=20'

PC 6620

SANITARY SEWER MANHOLE		
DREW JUNIOR HIGH SCHOOL 8511 COMPTON AVE. LOS ANGELES 1, CALIF.		
ARCHITECT <i>Harold Z. Day</i> CIVIL ENGR #273002	ARCH. DESIGN BRANCH PREPARED BY BUSINESS DIVISION BOARD OF EDUCATION L.A. SCHOOL DISTRICT 1429 SOUTH SAN PEDRO STREET LOS ANGELES CALIFORNIA	ARCHITECT DRAWN NICKOLOFF DATE MAY 1963 CHECKED J.A. SHEET 1 OF 1

6620