

INDEX MAP
TRACT No 27518
P.C. 6623
SCALE: 1" = 300'

NOTE:
The existence and approximate location of underground utilities or structures shown on these plans were determined by a search of the available public records. To the best of our knowledge there are no existing underground utilities or structures except as shown on these plans.
The contractor is required to take such precautionary measures to protect the utilities or structures shown and any other utilities or structures of the site as shall be the contractor's responsibility to notify the owners of the utilities or structures concerned before starting work.

LA PUENTE BLDG. DIST. NO. 2

- NOTE:**
1. PROVIDE STAKES ON THE PROPERTY LINE OR PROPERTY LINES PRODUCED AT RIGHT ANGLES TO THE SEWER LINE AT THE CENTER LINE OF EACH MANHOLE.
 2. NO REPRESENTATIVE OF THE COUNTY ENGINEER WILL SURVEY OR LAY OUT ANY PORTION OF THE WORK.
 3. THE PRIVATE ENGINEER SHALL FURNISH THE COUNTY ENGINEER WITH GRADE SHEETS AND STATIONING FOR ALL HOUSE LATERALS AND Y BRANCHES AND SHALL PROVIDE STAKES FOR THEM AT THEIR PROPER LOCATIONS WITH STATIONING PLAINLY MARKED. ALL HOUSE LATERALS SHALL BE CONSTRUCTED IN A STRAIGHT ALIGNMENT AT RIGHT ANGLES FROM THE MAIN LINE SEWER EXCEPT AS SHOWN ON THE PLANS. HOUSE LATERALS FROM CHIMNEYS SHALL NOT HAVE AN ANGLE OF LESS THAN 45° WITH THE MAIN LINE SEWER. ANY CHANGE IN ALIGNMENT SHALL BE REQUESTED BY WRITING BY THE PRIVATE ENGINEER.
 4. THE PRIVATE ENGINEER SHALL FURNISH THE HOUSE LATERAL DEPTH AT THE PROPERTY LINE BELOW THE TOP OF CURB ELEVATION FOR EACH HOUSE LATERAL ON THE GRADE SHEET.
 5. NO DIVISIONS SHALL BE MADE IN THESE PLANS WITHOUT THE APPROVAL OF THE COUNTY ENGINEER.
 6. THE CONTRACTOR SHALL NOTIFY THE CONSTRUCTION DIVISION BY TELEPHONE, MADISON 9-8747, EXT. 8158, AT LEAST TWENTY-FOUR HOURS BEFORE STARTING ANY WORK UNDER THIS CONTRACT.
 7. MANHOLES SHALL BE BRICK SEWER STRUCTURES PER S-104. PRECAST CONCRETE MANHOLES PER S-135 OR S-173 MAY BE USED AS AN ALTERNATE IN LOCATIONS APPROVED BY THE COUNTY ENGINEER.
 8. USE STANDARD MANHOLE FRAMES AND COVERS, S-117
 9. MANHOLES SHALL BE UNIMPROVED UNLESS OTHERWISE SHOWN OTHERWISE.
 10. USE EXTRA STRENGTH PIPE. ALL PIPE IS STANDARD DEPTH EXCEPT AS NOTED.
 11. USE MECHANICAL COMPRESSION JOINTS FOR ALL V.C.P. JOINTS PER SPECS. SECS. 34, 48, 54
 12. IF A POWER POLE IS WITHIN THREE FEET OF THE SEWER, THE SEWER SHALL BE ENCASED, PER S-172, CASE III, TWO FEET ON EITHER SIDE FROM THE POINT OF INTERFERENCE.
 13. IF DURING THE COURSE OF CONSTRUCTION IT IS DETERMINED THAT THERE IS LESS THAN FOUR FEET OF COVER OVER THE TOP OF A MAIN LINE OR HOUSE LATERAL V.C.P. SEWER WHICH IS NOT INDICATED ON THE PLANS, THE PIPE SHALL BE ENCASED PER S-172, CASE III, UNLESS OTHERWISE APPROVED BY THE COUNTY ENGINEER.
 14. HOUSE LATERALS TO BE CONSTRUCTED WITH INVERTS AT PROPERTY LINE. . . . FEET BELOW CURB GRADE EXCEPT AS NOTED.
 15. RESURFACE ALL TRENCHES WITHIN PAVED AREAS TO MEET L.A. COUNTY ROAD DEPT. OR CALIFORNIA STATE HIGHWAY REQUIREMENTS IN ACCORDANCE WITH PERMITS.
 16. FOR ALLOWABLE LEAKAGE TEST USE FORMULA NO. SPECS. SEC. 54.
 17. ALL STATE AND LOCAL TRENCH SAFETY ORDERS WILL BE RIGIDLY ENFORCED.

COLLECT CHARGES AS INDICATED
PR Smith 10/15/63

TO BE CONSTRUCTED IN
TRACT No 27518

PRIVATE CONTRACT NO. 6623

W.S. 37
5 SHEETS, 10 PAGES
SCALE: VERT. 1" = 4' HORIZ. 1" = 40'
MAY 1963

PREPARED IN THE OFFICES OF
KEMMERER ENGR. CO. INC.
145 NO. PAINTER AVE. WHITTIER, CALIF.
By Robert R. Flores
REG. C.E. NO. 11343

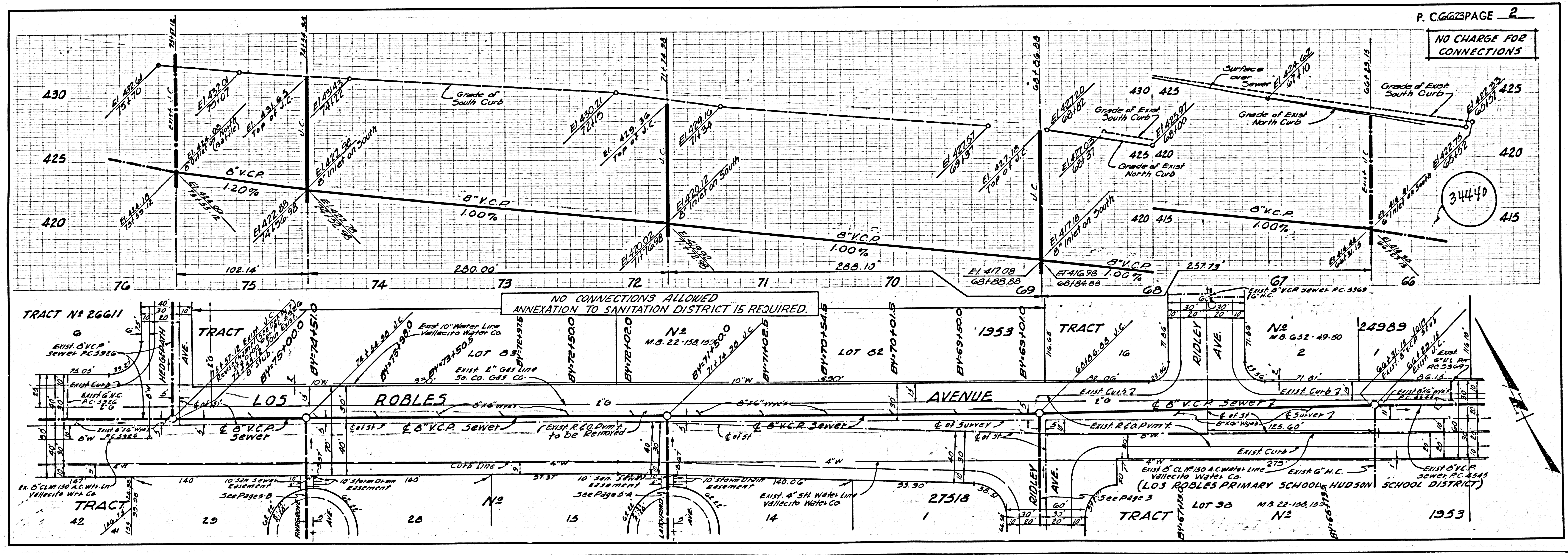
34439

FOR LEGEND SEE PLAN NO. S-64

NOTE:
GRADES TO WHICH THIS IMPROVEMENT IS TO BE CONSTRUCTED ARE SHOWN ON PLANS AND PROFILES. GRADE POINTS FOR TOP OF CURBS, CENTER LINE OF STREETS, OR CENTER LINE OF ALLEYS ARE SHOWN BY CIRCLES ON PROFILES AT ALL POINTS BETWEEN DESIGNATED POINTS THE GRADE SHALL BE ESTABLISHED SO AS TO CONFORM TO A STRAIGHT LINE DRAWN BETWEEN SAID DESIGNATED POINTS. STATIONING ARE IN FEET ABOVE U.S.C. & G.S. MEAN LEVEL DATUM OF 1929. THIS DRAWING AND THE DATA HEREON ARE HEREBY MADE A PART OF THE SPECIFICATIONS.
WORK SHALL BE CONSTRUCTED ACCORDING TO STANDARD SPECIFICATIONS DATED MAY 23, 1962, ON FILE IN THE OFFICE OF THE COUNTY ENGINEER AND SHALL BE PROSECUTED ONLY IN THE PRESENCE OF THE COUNTY ENGINEER.
BEFORE WORK CAN BE STARTED, THE CONTRACTOR MUST OBTAIN A PERMIT TO EXCAVATE IN COUNTY STREETS FROM THE L.A. COUNTY ROAD DEPT., DISTRICT OFFICE NO. AND PAY THE TO THE COUNTY ENGINEER, ROOM 326, COUNTY ENGINEERING BUILDING, 108 WEST SECOND STREET OR CONSTRUCTION INSPECTION AND RECORD PLANS.
APPROVAL OF THIS PLAN BY THE COUNTY OF LOS ANGELES DOES NOT CONSTITUTE A REPRESENTATION AS TO THE ACCURACY OF THE LOCATION OF OR THE EXISTENCE OR NON-EXISTENCE OF ANY UNDERGROUND UTILITY PIPE, OR STRUCTURE WITHIN THE LIMITS OF THIS PROJECT. THIS NOTE APPLIES TO ALL PAGES.
IF WORK IS TO BE DONE IN A STATE HIGHWAY, A PERMIT MUST BE OBTAINED FROM THE STATE OF CALIFORNIA, DIVISION OF HIGHWAYS, 128 SOUTH SPRING STREET, LOS ANGELES, CALIFORNIA.

COUNTY OF LOS ANGELES, CALIFORNIA
JOHN A. LAMBIE, COUNTY ENGINEER J. D. PARKHURST, CHIEF ENGINEER
CO. SAN. DIST. NO. 15
APPROVED BY: *B.H. Hughes* ASSISTANT SANITATION ENGINEER APPROVED BY: *R. J. Parkhurst* OFFICE ENGINEER
SUBMITTED BY: *B.H. Hughes* 10-17-63 SAN DIMAS REGIONAL OFFICE, R.E. NO. C11636
CHECKED BY: *SK. White* 10-18-63 REG. C.E. NO. 13665

J.N. 0360.73



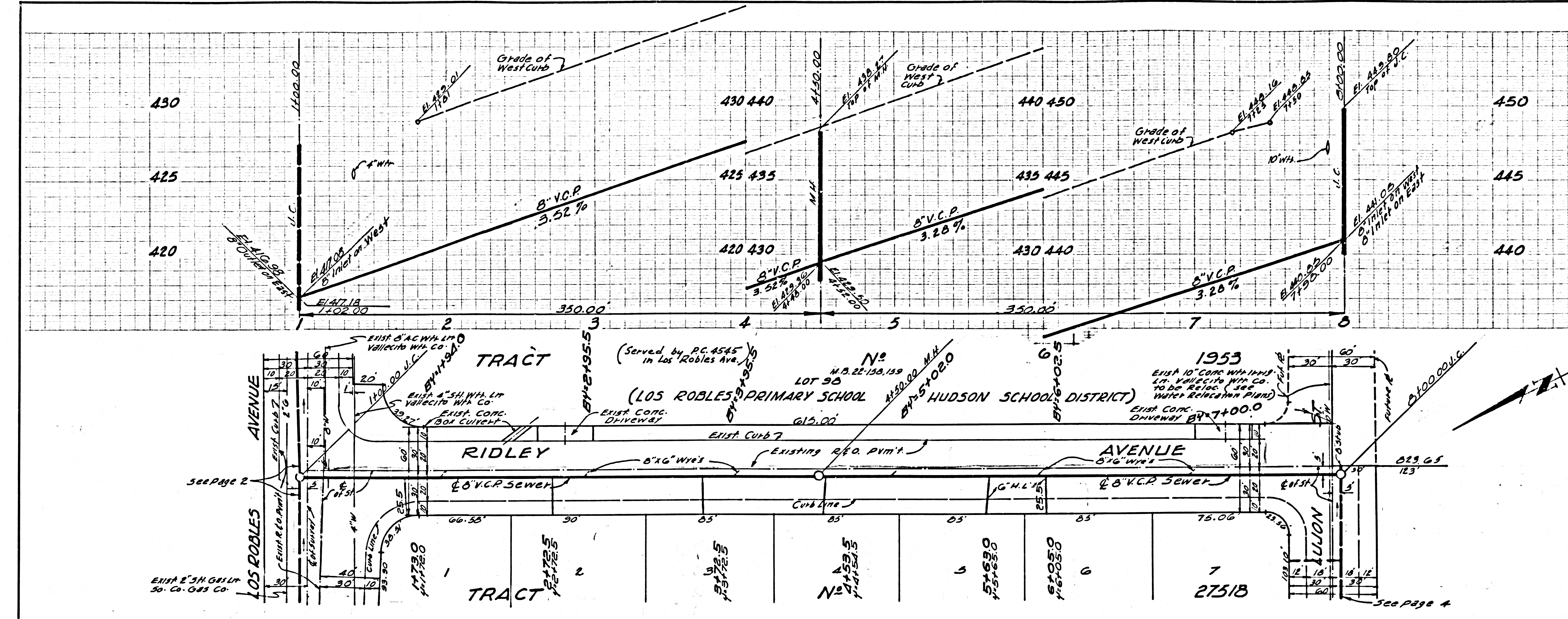
NO CHARGE FOR CONNECTIONS

NO CONNECTIONS ALLOWED ANNEXATION TO SANITATION DISTRICT 15 REQUIRED.

34440

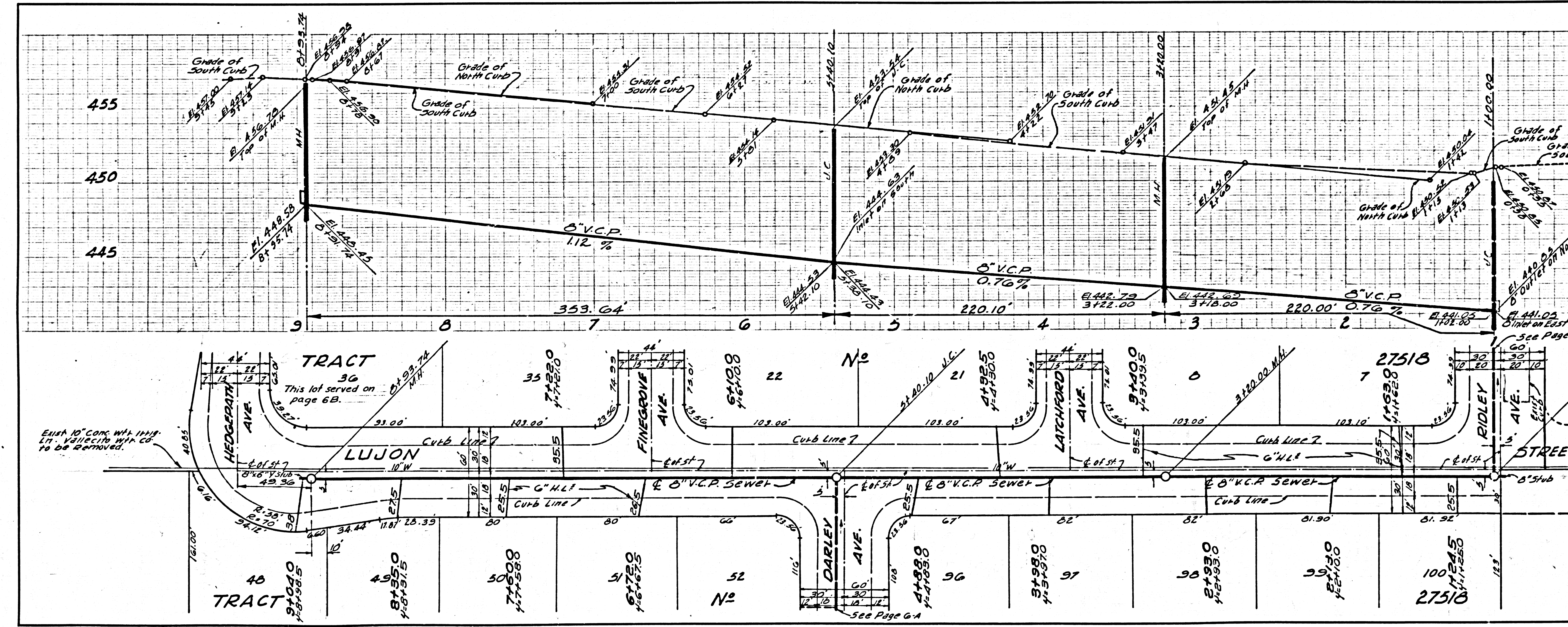
NO CHARGE FOR CONNECTIONS

34441



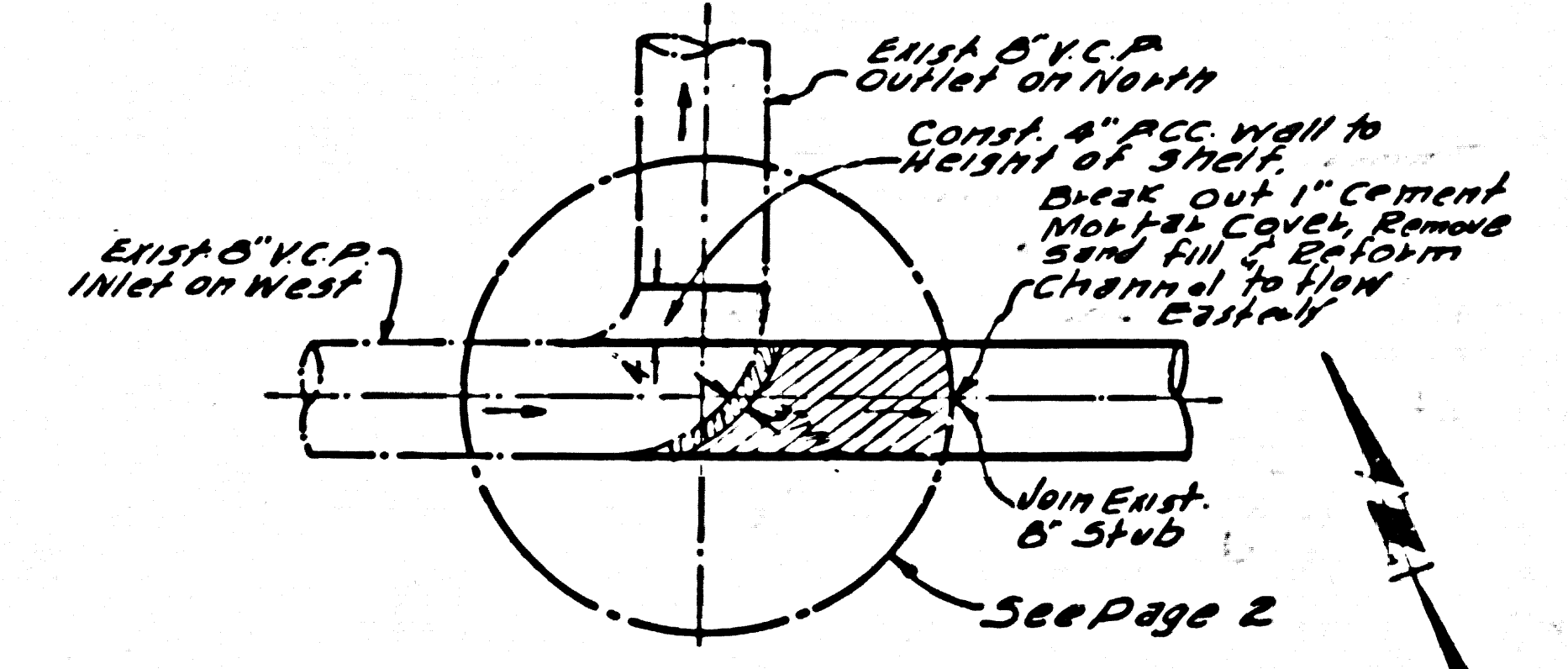
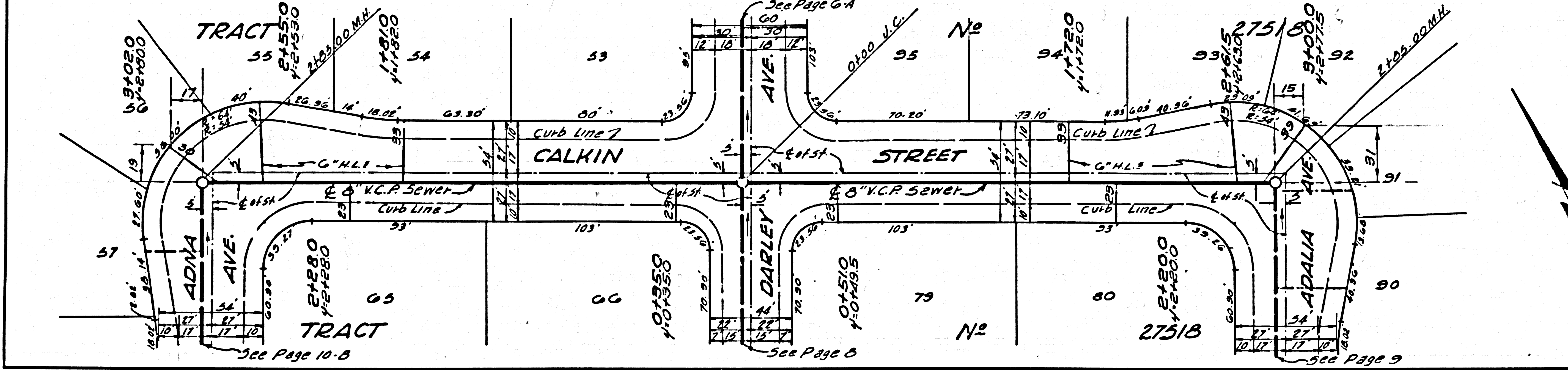
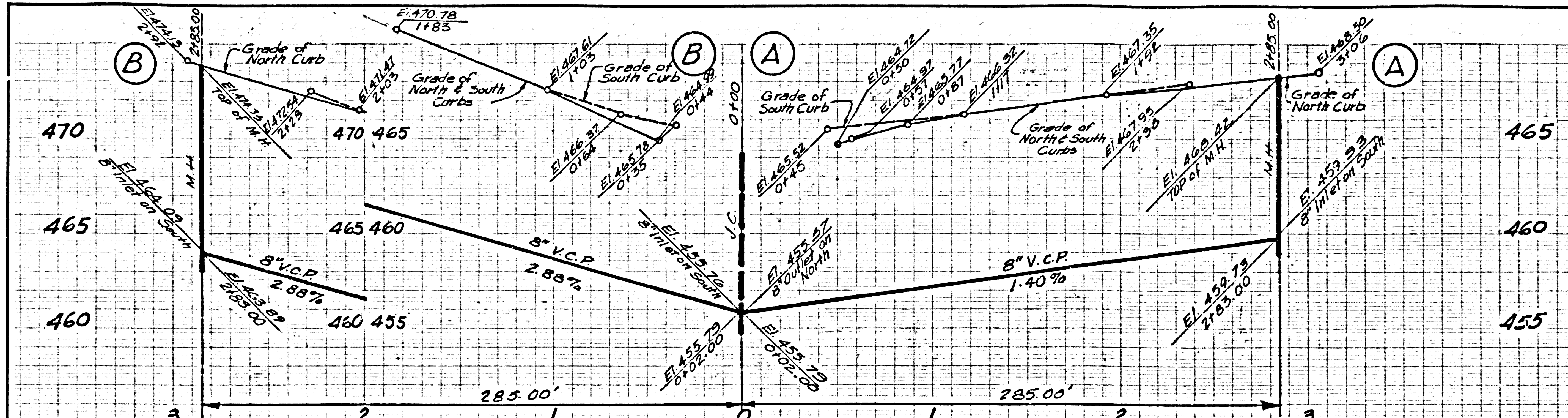
NO CHARGE FOR CONNECTIONS

34442



NO CHARGE FOR CONNECTIONS

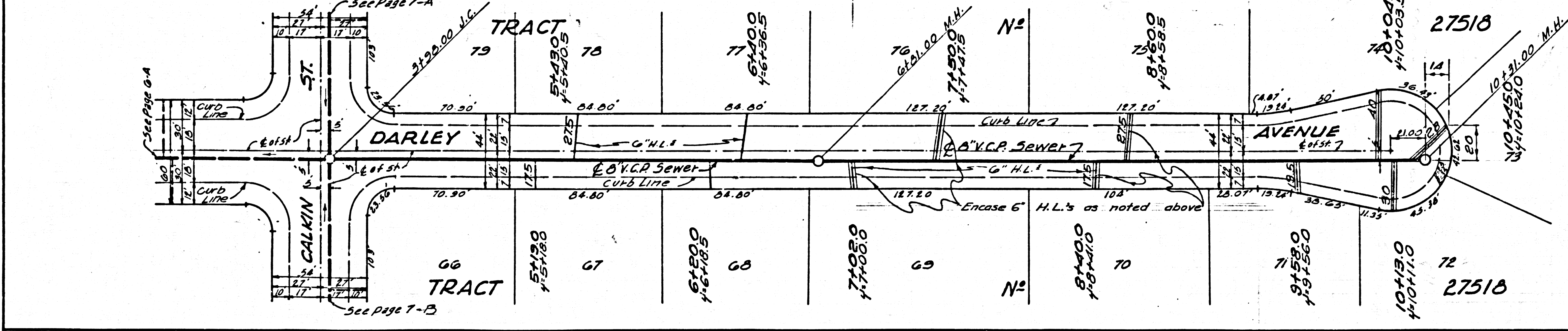
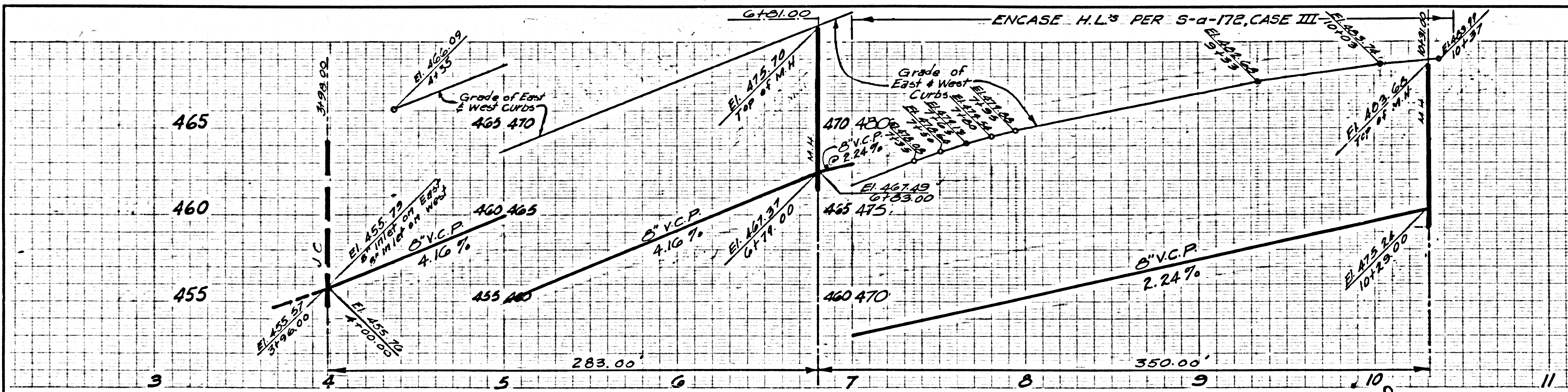
34445



MANHOLE DETAIL
 AT STA. 0100 P.C. 5326
 PAGE 6 HEDGEPATH AVE
 LOS ROBLES AVE

NO CHARGE FOR CONNECTIONS

34446



REVISION
 Raised Sewer & Street Grades
 Between Sta's 3+98.00 & 10+31.00
 APPROVED BY *[Signature]* DATE 1-28-54
 P.C.E. #11636 OF OFFICE OF
 L.A. COUNTY ENGINEER