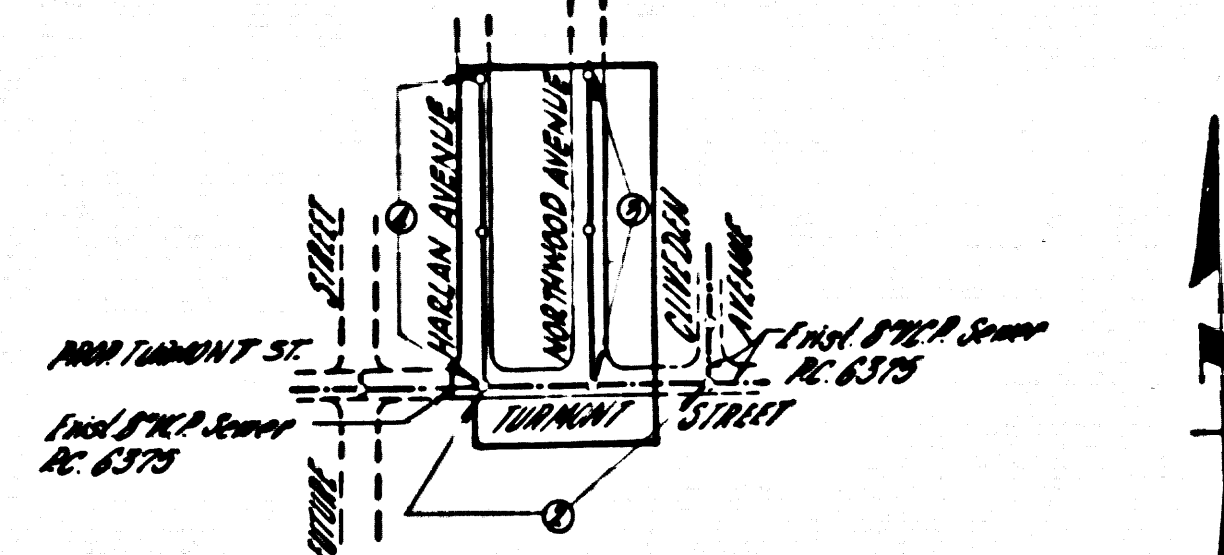


Bench Mark: 5Y-3965 Gardena Quad. 1960
Spk. & L. in pavement 1'9" W. E. of Wilmington
Ave. & 2'17" S. E. of Victoria St. 1'75" S. of T.P.
#549556 H. Elev. 138.886

15. IN MAKING THE CURVE OF CONSTRUCTION IT IS DETERMINED THAT THERE IS LESS THAN FOUR FEET OF COVER OVER THE TOP OF A MAIN LINE OF HOUSE LATERALS OR SEWER WHICH IS NOT INDICATED ON THIS PLAN. THE WORK SHALL BE CHECKED PER S.A.-112, CASE III, UNLESS OTHERWISE APPROVED BY THE COUNTY ENGINEER.
16. ALL HOUSE LATERALS SHALL BE CONSTRUCTED IN A STRAIGHT ALIGNMENT AT RIGHT ANGLES FROM THE MAIN LINE SEWER EXCEPT AS SHOWN ON THE PLANS.



INDEX MAP
TRACT NO 27984
SCALE 1"=500'
P.C. 6637

NO CONNECTIONS FOR THE DISPOSAL OF INDUSTRIAL WASTES SHALL BE MADE TO SEWERS SHOWN ON THESE DRAWINGS WITHOUT WRITTEN PERMISSION FROM THE CHIEF ENGINEER AND GENERAL MANAGER OF THE COUNTY SANITATION DISTRICTS.

NO CHARGE FOR CONNECTIONS
E.W.H. Brent

PRIVATE ENGINEER'S
NOTICE TO CONTRACTOR

THE EXISTENCE AND LOCATION OF ANY UNDERGROUND UTILITY PIPES OR STRUCTURES SHOWN ON THESE PLANS ARE OBTAINED BY A SEARCH OF THE AVAILABLE RECORDS TO THE BEST OF OUR KNOWLEDGE. THERE ARE NO EXISTING UTILITIES EXCEPT AS SHOWN ON THIS MAP. THE CONTRACTOR IS REQUIRED TO TAKE PRECAUTIONARY MEASURES TO PROTECT THE UTILITY LINES SHOWN AND ANY OTHER LINES NOT OF RECORD OR NOT SHOWN ON THIS DRAWING.

DOUBLE SCALE
LENNOX BLDG. DIST. NO. 7

PROFILE ALIGNMENT AND GRADE OF P.C. 6637
SANITARY SEWERS PAGE 1
TO BE CONSTRUCTED IN JN 036085

TRACT NO 27984

PRIVATE CONTRACT NO. 6637

W.S. 26
2 SHEETS, 1 PAGES
SCALE: VERT. 1"=4' HORIZ. 1"=40' May 1983
PREPARED IN THE OFFICES OF
ENGINEERING SERVICE CORPORATION

34667

By: *J. K. Merrill*
REG. C. E. NO. 13095
FOR LEGEND SEE PLAN NO. S-A-64

- NOTE:
PROVIDE STAKES ON THE PROPERTY LINE OR PROPERTY LINES PRODUCED AT RIGHT ANGLES TO THE SEWER LINE AT THE CENTER LINE OF EACH MANHOLE.
NO REPRESENTATIVE OF THE COUNTY ENGINEER WILL SURVEY OR LAYOUT ANY PORTION OF THE WORK.
THE "PRIVATE ENGINEER" SHALL FURNISH THE COUNTY ENGINEER WITH GRADE SHEETS AND STATIONING FOR ALL HOUSE LATERALS AND Y MANHOLES AND SHALL PROVIDE STAKES FOR THEM AT THEIR PROPER LOCATIONS WITH STATIONING PLAINLY MARKED. ANY CHANGE IN ALIGNMENT SHALL BE REQUESTED IN WRITING BY THE PRIVATE ENGINEER.
10 REVISIONS SHALL BE MADE IN THESE PLANS WITHOUT THE APPROVAL OF THE COUNTY ENGINEER.
1. USE STANDARD MANHOLE FRAMES AND COVERS, S.A.-117, EXCEPT AS NOTED.
 2. USE EXTRA STRENGTH AND ALL NON STANDARD DESIGN EXCEPT AS NOTED.
 3. OIL RESISTANT NON-CORROSION JOINTS FOR ALL P.C.P. AND SPECT. JACK, 48" R. & R.
 4. ESTABLISH ALL TRENCH WITHIN PAVED AREAS TO MEET L.A. COUNTY ROAD DEPT. OR CALIF. STATE HIGHWAY DEPT. REQUIREMENTS IN ACCORDANCE WITH PERMITS.
 5. IF POWER POLE IS WITHIN THREE FEET OF THE TRENCH, THE SEWER SHALL BE ENCASED, PER S.A.-112, CASE III, TWO FEET ON EACH SIDE FROM THE POINT OF INTERFERENCE.
 6. HOUSE LATERALS TO BE CONSTRUCTED WITH INVERTS AT PROPERTY LINE _____ FEET BELOW CURB GRADE EXCEPT AS NOTED.
 7. ALL STRUCTURES SHALL BE BRICE SEWER STRUCTURES, S.A. 104, PRECAST CONCRETE MANHOLES PER S.A.-112 AS S.A.-112 MAY BE USED AT DISCRETION OF COUNTY ENGINEER.
 8. FOR ALLOWABLE LEAKAGE TEST USE FORMULA NO. _____ CHECK, SEC. 14.
 9. MANHOLE TOPS IN UNIMPROVED RIGHTS-OF-WAY TO BE 6" ABOVE FINISHED GRADE.
 10. THE PRIVATE ENGINEER IS TO FURNISH THE HOUSE LATERAL DEPTH AT THE PROPERTY LINE BELOW THE TOP OF CURVE ELEVATION FOR EACH HOUSE LATERAL ON THE GRADE SHEET.
 11. THE CONTRACTOR SHALL NOTIFY THE CONSTRUCTION DIVISION BY TELEPHONE, MADISON 9-072, EXT. 8552 AT LEAST 24 HOURS BEFORE PLACING ANY WORK UNDER THE CONTRACT.
 12. DIMENSIONS SHOWN AND NOTES SHALL APPLY TO THE CONSTRUCTION OF THIS PROJECT.
 13. (A) NO CONSTRUCTION SHALL BE ALLOWED IN PAVED AREAS UNLESS ACCEPTABLE PROTECTION IS MAINTAINED TO THE SATISFACTION OF THE COUNTY ENGINEER'S DEPARTMENT THAT CONSTRUCTION IS LIMITED TO 80% OF THE EXISTING SURFACE.
(B) IF CONSTRUCTION IS LESS THAN 80% THE SURFACE MUST BE GRADED TO ORIGINAL FINISH CONSTRUCTION AS SHOWN ON PLANS.
(C) IF CONSTRUCTION IS GREATER THAN 80% GRADING AND STAKING ARE BACKS AND NOT REQUIRED.
 14. ALL STATE AND LOCAL TRENCH SAFETY ORDERS WILL BE RIGIDLY ENFORCED.

ENGINEERING SERVICE CORPORATION		1127 W. WASHINGTON BLVD.		RI. 9-7281	
LOS ANGELES 15, CALIF.					
REVISIONS		TRACED BY	<i>E.W.H.</i>		
		DES'G'D BY	<i>E.W.H.</i>		
		CK'D BY	<i>C.M.R.</i>		
		SUBMITTED			
SUB STRUCTURES OK'D					
W. O. NO.	DWG. NO.	DATE	SCALE	L. B.	P. R.
1070-5		May 1983	AS NOTED		

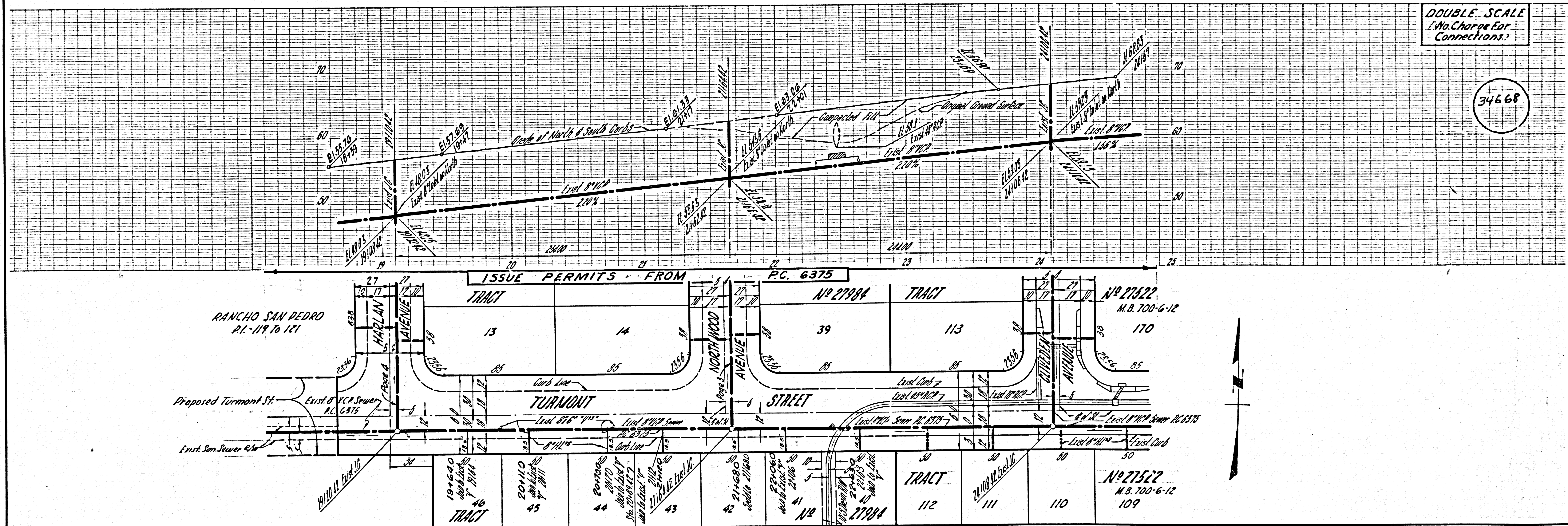
NOTE:
GRADES TO WHICH THIS IMPROVEMENT IS TO BE CONSTRUCTED ARE SHOWN ON PLANS AND PROFILES. GRADE POINTS FOR TOP OF CURBS, CENTER LINE OF STREETS, OR CENTER LINE OF ALLEYS ARE SHOWN BY CIRCLES ON PROFILES. AT ALL POINTS BETWEEN DESIGNATED POINTS THE GRADE SHALL BE ESTABLISHED SO AS TO CONFORM TO A STRAIGHT LINE DRAWN BETWEEN SAID DESIGNATED POINTS.
ELEVATIONS ARE IN FEET ABOVE U.S. DATUM OR MEAN SEA LEVEL.
THE DRAWING AND THE DATA HEREON ARE HEREBY MADE A PART OF THE SPECIFICATIONS.
WORK SHALL BE CONSTRUCTED ACCORDING TO SPECIFICATIONS ON FILE IN THE OFFICE OF THE COUNTY ENGINEER AND SHALL BE PROSECUTED ONLY IN THE PRESENCE OF THE COUNTY ENGINEER.
BEFORE WORK CAN BE STARTED, THE CONTRACTOR MUST OBTAIN A PERMIT TO EXCAVATE IN COUNTY STREETS FROM THE L. A. COUNTY ROAD DEPT., DISTRICT ENGINEER, AND A PERMIT TO EXCAVATE IN THE COUNTY ENGINEER'S ROAD DISTRICTS FROM THE COUNTY ENGINEER, SUFFICIENT TO COVER THE COST OF CONSTRUCTION INSPECTION AND RECORD PLANS.
APPROVAL OF THIS PLAN BY THE COUNTY OF LOS ANGELES DOES NOT CONSTITUTE A REPRESENTATION AS TO THE ACCURACY OF THE LOCATION OR THE EXISTENCE OR NON-EXISTENCE OF ANY UNDERGROUND UTILITY PIPE, OR STRUCTURE WITHIN THE LIMITS OF THIS PROJECT. THIS NOTE APPLIES TO ALL PAGES.
IF WORK IS TO BE DONE IN A STATE HIGHWAY, A PERMIT MUST BE OBTAINED FROM THE STATE OF CALIFORNIA, DIVISION OF HIGHWAYS, 120 SOUTH SPRING STREET.

COUNTY OF LOS ANGELES, CALIFORNIA
APPROVED, JOHN A. LAMBE, COUNTY ENGINEER
APPROVED, J. K. MERRILL, CHIEF ENGINEER
CO. SAN. DIST. NO. 0
By: *R. E. Keller* By: *J. K. Merrill*
ASSIST. SANITATION ENGINEER CHIEF ENGINEER
CHECKED BY: *P. J. DeLoe*
OFFICE OF COUNTY ENGINEER, REG. C. E. NO. 13406
SUBMITTED BY: *Jack C. Lansing*
DRAINAGES-CENTRAL VALLEY REGIONAL ENGINEER

P.C. 6637 PAGE 2

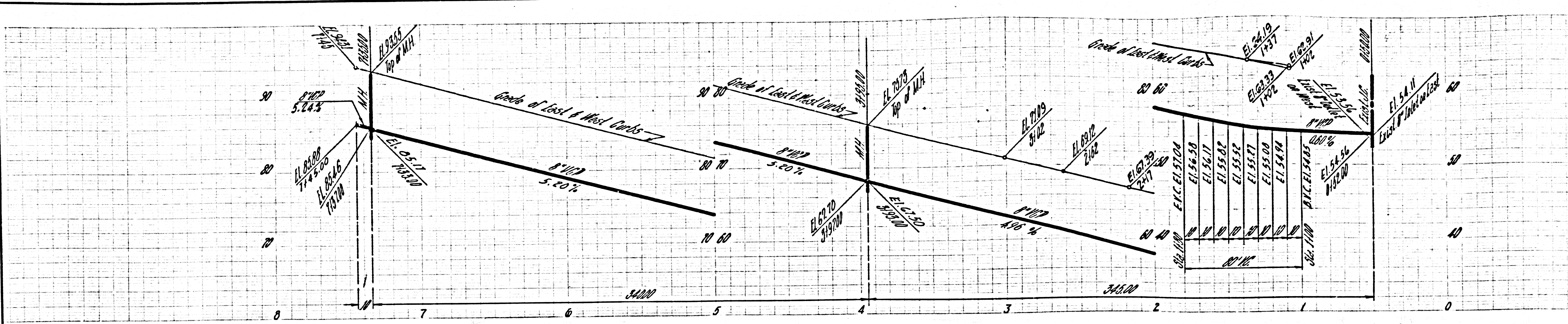
DOUBLE SCALE
No Charge For Connections?

34668



DOUBLE SCALE
No Charge For
Connections

3469



RANCHO SAN PEDRO
RI-119 to 121

TRACT	27	28	29	30	31	32	33	34	35	36	37	38	39	TRACT
	7419.5 N 419.5	6169.5 N 469.5	5119.5 N 419.5	5168.5 N 468.5	5118.0 N 418.0	4168.0 N 418.0	4118.0 N 418.0	3167.5 N 417.5	3117.5 N 417.5	2167.0 N 417.0	2117.0 N 417.0	1166.0 N 416.0	1116.5 N 416.5	TRACT
TRACT	26	25	24	23	22	21	20	19	18	17	16	15	14	TRACT
	7415.5 N 415.5	6165.5 N 465.5	5115.5 N 415.5	5165.5 N 465.5	5115.0 N 415.0	4165.5 N 415.5	4115.0 N 415.0	3165.5 N 415.5	3115.5 N 415.5	2167.0 N 417.0	2117.0 N 417.0	1166.0 N 416.0	1117.5 N 417.5	TRACT

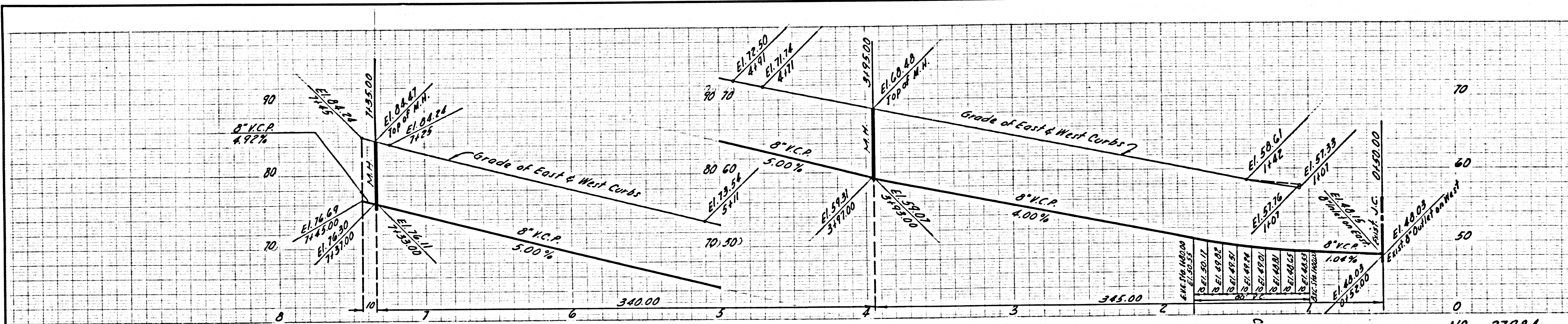
NORTHWOOD AVENUE

TURMONT STREET

NO 27984

DOUBLE SCALE
No Charge For
Connections

3470



RANCHO SAN PEDRO
RI-119 to 121

TRACT	1	2	3	4	5	6	7	8	9	10	11	12	13	TRACT
	7420.5 N 420.5	6170.5 N 470.5	5120.5 N 420.5	5170.0 N 470.0	5120.0 N 420.0	4170.5 N 470.5	4120.5 N 420.5	3170.5 N 470.5	3120.5 N 420.5	2170.5 N 470.5	2120.5 N 420.5	1170.5 N 470.5	1120.5 N 420.5	TRACT
TRACT	14	13	12	11	10	9	8	7	6	5	4	3	2	TRACT
	7420.5 N 420.5	6170.5 N 470.5	5120.5 N 420.5	5170.0 N 470.0	5120.0 N 420.0	4170.5 N 470.5	4120.5 N 420.5	3170.5 N 470.5	3120.5 N 420.5	2170.5 N 470.5	2120.5 N 420.5	1170.5 N 470.5	1120.5 N 420.5	TRACT

HARLAN AVENUE

TURMONT STREET

RANCHO SAN PEDRO
RI-119 to 121

NO 27984