

Bench Mark: SY-3965 Gardner Quad. 1960
 Spk. & L. in pavement 119' W. & of Wilmington
 Ave. ± 2175' S. E. of Victoria St. ± 75' S. of T.P.
 #549536 H Elev. 189.886'

DOUBLE SCALE
 LENNOX BLDG. DIST. NO. 7

PROFILE ALIGNMENT AND GRADE OF P.C. 6639
 SANITARY SEWERS PAGE 1
 TO BE CONSTRUCTED IN J.U. 036089

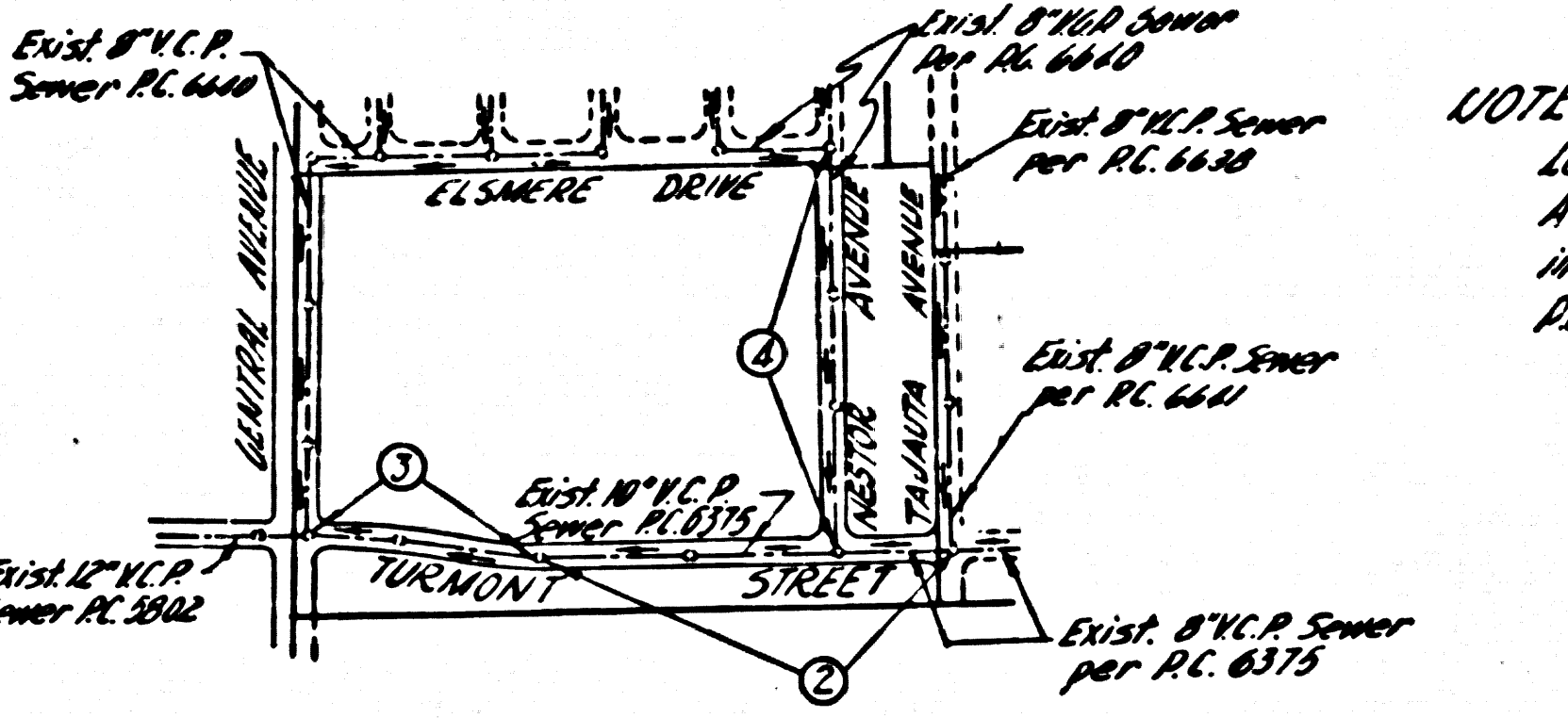
TRACT N^o 26884
 PRIVATE CONTRACT NO. 6639

W.S. 26
 2 SHEETS, 4 PAGES

SCALE: VERT. 1" = 4'
 HORIZ. 1" = 40' May, 1963

PREPARED IN THE OFFICES OF
 ENGINEERING SERVICE CORPORATION
 BY: J.R. Merrill
 REG. C. E. NO. 13089

FOR LEGEND SEE PLAN NO. S-A-64



REVISION MAY 20, 1964
 RELOCATED 4 WYES AND ADDED 13 WYES
 ON WEST SIDE OF NESTOR AVENUE, PAGES
 1 & 2
 BY: J.R. Merrill
 J.E. 13095
 APPROVED: Ralph Schafar 5/25/64

INDEX MAP
 TRACT N^o 26884
 SCALE 1"=600'
 P.C. 6639

NOTE:
 Lots 29 to 41 incl. are shown in TOWNHIA
 AVENUE by P.C. 6641 and Lots 42 to 46
 incl. are shown in TOWNHIA AVENUE by
 P.C. 6638.

NO CONNECTIONS FOR THE DISPOSAL OF
 INDUSTRIAL WASTES SHALL BE DRAWN
 SHOWN ON THESE DRAWINGS
 WITHOUT WRITTEN PERMISSION FROM
 THE CHIEF ENGINEER AND GENERAL MANAGER
 OF THE COUNTY SANITATION DISTRICTS.

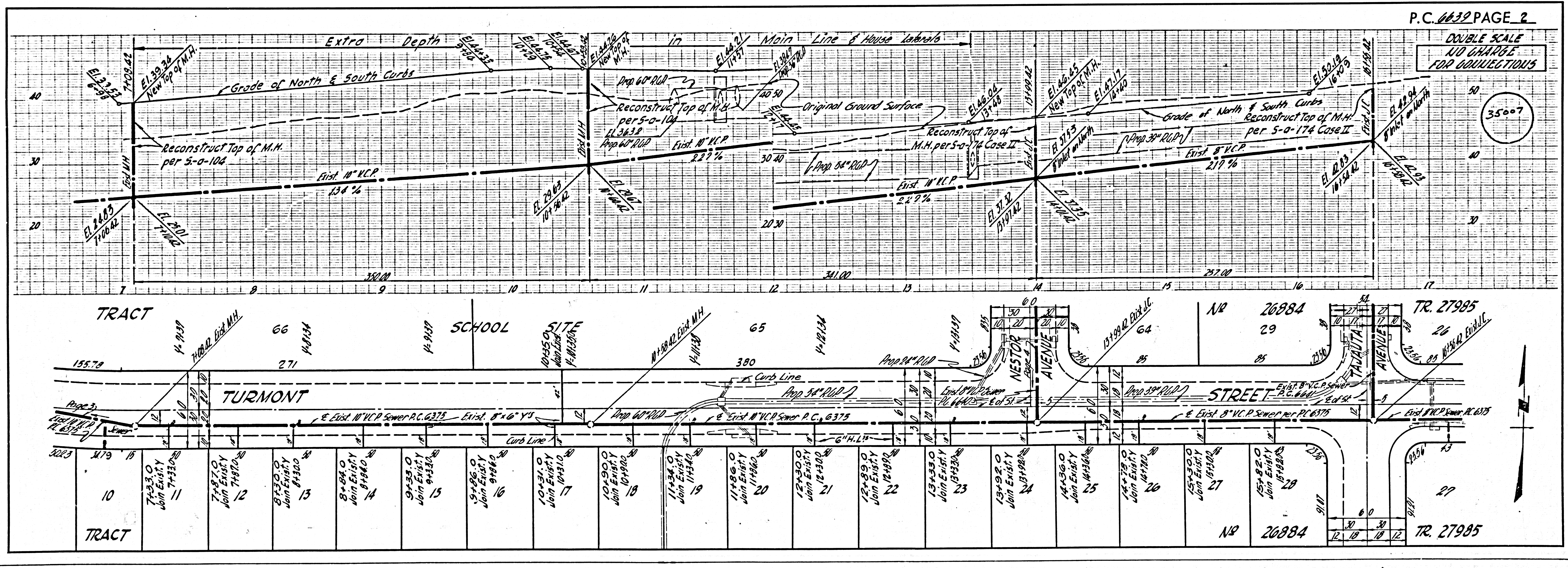
COLLECT CHARGES
 AS INDICATED
 E. Schafar

- NOTES
- PROVIDE STAKES ON THE PROPERTY LINE OR PROPERTY LINES PRODUCED AT RIGHT ANGLES TO THE SEWER LINE AT THE CENTER LINE OF EACH MANHOLE.
 - NO REPRESENTATIVE OF THE COUNTY ENGINEERS WILL SURVEY OR LAYOUT ANY PORTION OF THE WORK.
 - THE PRIVATE ENGINEER SHALL FURNISH THE COUNTY ENGINEER WITH GRADE SHEETS AND STATIONING FOR ALL HOUSE LATERALS AND Y BRANCHES AND SHALL PROVIDE STAKES FOR THEM AT THEIR PROPER LOCATIONS WITH STATIONING PLAINLY MARKED. ANY CHANGE IN ALIGNMENT SHALL BE REQUESTED IN WRITING BY THE PRIVATE ENGINEER.
 - NO REVISIONS SHALL BE MADE IN THESE PLANS WITHOUT THE APPROVAL OF THE COUNTY ENGINEER.
 - USE STANDARD MANHOLE FRAMES AND COVERS, S-A-117, EXCEPT AS NOTED.
 - USE EXTRA STRENGTH RIGID ALL PURPOSE STANDARD DEPTH EXCEPT AS NOTED.
 - USE MECHANICAL CONNECTIONS FOR JOINTS FOR 18" AND 24" SIZES PER S-S-117.
 - RESURFACE ALL TRENCH WITHIN PAVED AREA TO MEET L. A. COUNTY ROAD DEPT. OR CALIF. STATE HIGHWAY DEPT. REQUIREMENTS IN ACCORDANCE WITH PERMITS.
 - ALL HOUSE LATERALS TO BE CONSTRUCTED WITHIN THE PROPERTY LINE SHALL BE CONSTRUCTED PER S-S-117, CASE II, 7" DIA. UNLESS OTHERWISE SPECIFIED.
 - ALL STRUCTURES SHALL BE BRICK OR CONCRETE. S.A.M. PROJECT COMPLETE MANHOLE PER S-S-117 OR S-S-173.
 - FOR ALLOWABLE LEAKAGE TEST USE FORMULA NO. 1001, S-S-117, CASE II.
 - MANHOLE TOPS IN UNIMPROVED HIGHWAYS OR WHAT TO BE 4" ABOVE FINISHED GRADE.
 - THE PRIVATE ENGINEER IS TO FURNISH THE HOUSE LATERAL DEPTH AT THE PROPERTY LINE BELOW THE TOP OF CURVE ELEVATION FOR EACH HOUSE LATERAL ON THE GRADE SHEET.
 - THE CONTRACTOR SHALL NOTIFY THE CONSTRUCTION DIVISION BY TELEPHONE, MADISON 9-4747, EXT. 6644, AT LEAST 24 HOURS BEFORE STARTING ANY WORK UNDER THIS CONTRACT.
 - SHOW CONTRACTOR'S BIDDING MAY 25, 1963 AND B. APPLY IN THE CONSTRUCTION OF THIS PROJECT.
 - NO CONTRACTOR SHALL BE RESPONSIBLE FOR BIDDING UNLESS ACCEPTABLE CERTIFICATION IS SUBMITTED TO THE CONSTRUCTION DIVISION OF THE COUNTY ENGINEERS DEPARTMENT THAT CONTRACTOR'S INSURANCE IS NOT LESS THAN \$100,000.00. ALL WORKING LINES AND HOUSE LATERALS SHALL BE GRADED PER S-S-117, CASE II. ALL CONNECTIONS TO EXISTING MAINS SHALL BE MADE IN ACCORDANCE WITH S-S-117, CASE II. ALL CONNECTIONS TO EXISTING MAINS SHALL BE MADE IN ACCORDANCE WITH S-S-117, CASE II.
 - ALL GREASE AND SOLID TRAP SAFETY DEVICES WILL BE REGULARLY INSPECTED.

| | | | | | |
|--|---------------------|----------|----------|------|------|
| ENGINEERING SERVICE CORPORATION 1127 W. WASHINGTON BLVD. LOS ANGELES 15, CALIF. RI. 9-7281 | | | | | |
| REVISIONS | TRACED BY: E.S. 106 | | | | |
| | DES'G'D BY: H.S.T. | | | | |
| | CK'D BY: C.M.P. | | | | |
| | SUBMITTED: | | | | |
| SUB STRUCTURES OK'D | | | | | |
| W.O. NO. | DWG. NO. | DATE | SCALE | L.B. | F.B. |
| 78-3 | | May 1963 | AS SHOWN | | |

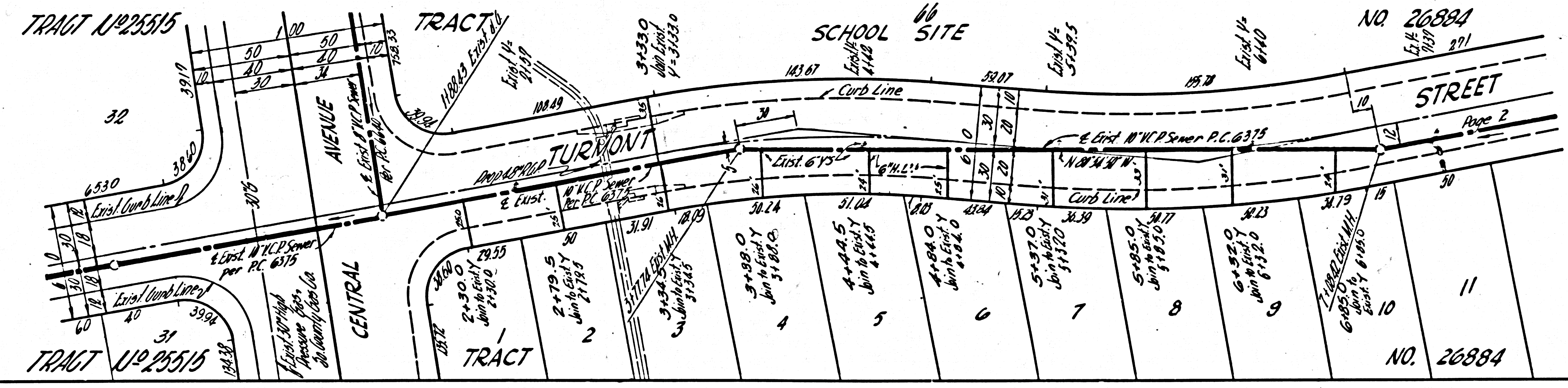
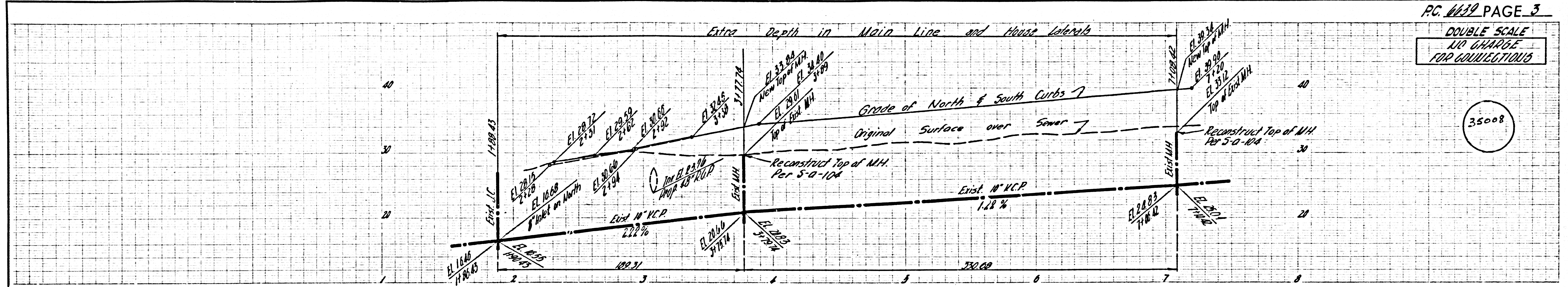
NOTE:
 GRADES TO WHICH THIS IMPROVEMENT IS TO BE CONSTRUCTED ARE SHOWN ON PLANS AND PROFILES. GRADE POINTS FOR TOP OF CURBS, CENTER LINE OF STREETS, OR CENTER LINE OF ALLEYS ARE SHOWN BY CIRCLES ON PROFILES. AT ALL POINTS BETWEEN DESIGNATED POINTS THE GRADE SHALL BE ESTABLISHED SO AS TO CONFORM TO A STRAIGHT LINE DRAWN BETWEEN SAID DESIGNATED POINTS.
 ELEVATIONS ARE IN FEET ABOVE U.S.C. & G.S. DATUM OR MEAN SEA LEVEL.
 THIS DRAWING AND THE DATA HEREON ARE HEREBY MADE A PART OF THE SPECIFICATIONS.
 WORK SHALL BE CONSTRUCTED ACCORDING TO SPECIFICATIONS ON FILE IN THE OFFICE OF THE COUNTY ENGINEER AND SHALL BE PROSECUTED ONLY IN THE PRESENCE OF THE COUNTY ENGINEER.
 BEFORE WORK CAN BE STARTED, THE CONTRACTOR MUST OBTAIN A PERMIT TO EXCAVATE IN COUNTY STREETS FROM THE L. A. COUNTY ROAD DIST. DISTRICT ENGINEER AND A PERMIT TO EXCAVATE IN COUNTY STREETS FROM THE COUNTY ENGINEER. SUFFICIENT TO COVER THE COST OF CONSTRUCTION INSPECTION AND RECORD PLANS.
 APPROVAL OF THIS PLAN BY THE COUNTY OF LOS ANGELES DOES NOT CONSTITUTE A REPRESENTATION AS TO THE ACCURACY OF THE LOCATION OF OR THE EXISTENCE OR NON-EXISTENCE OF ANY UNDERGROUND UTILITY PIPE, OR STRUCTURE WITHIN THE LIMITS OF THIS PROJECT. THIS NOTE APPLIES TO ALL PAGES.
 IF WORK IS TO BE DONE IN A STATE HIGHWAY, A PERMIT MUST BE OBTAINED FROM THE STATE OF CALIFORNIA, DIVISION OF HIGHWAYS, 120 SOUTH SPRING STREET.

COUNTY OF LOS ANGELES, CALIFORNIA
 APPROVED: JOHN A. LAMBIE, COUNTY ENGINEER
 APPROVED: J.R. Merrill, CHIEF ENGINEER
 CO. SAN. DIST. NO. 29
 BY: J.R. Merrill, ASST. SANITATION ENGINEER
 BY: J.R. Merrill, OFFICE ENGINEER
 CHECKED BY: Ralph Schafar
 OFFICE OF COUNTY ENGINEER, REG. C. E. NO. 13966
 SUBMITTED BY: Jack C. Lawrence
 1125 W. 112th - CULVERDA VALLEY REGIONAL ENGINEER



DOUBLE SCALE
NO CHARGE
FOR COLLECTIONS

35008



DOUBLE SCALE
NO CHARGE
FOR COLLECTIONS

35009

