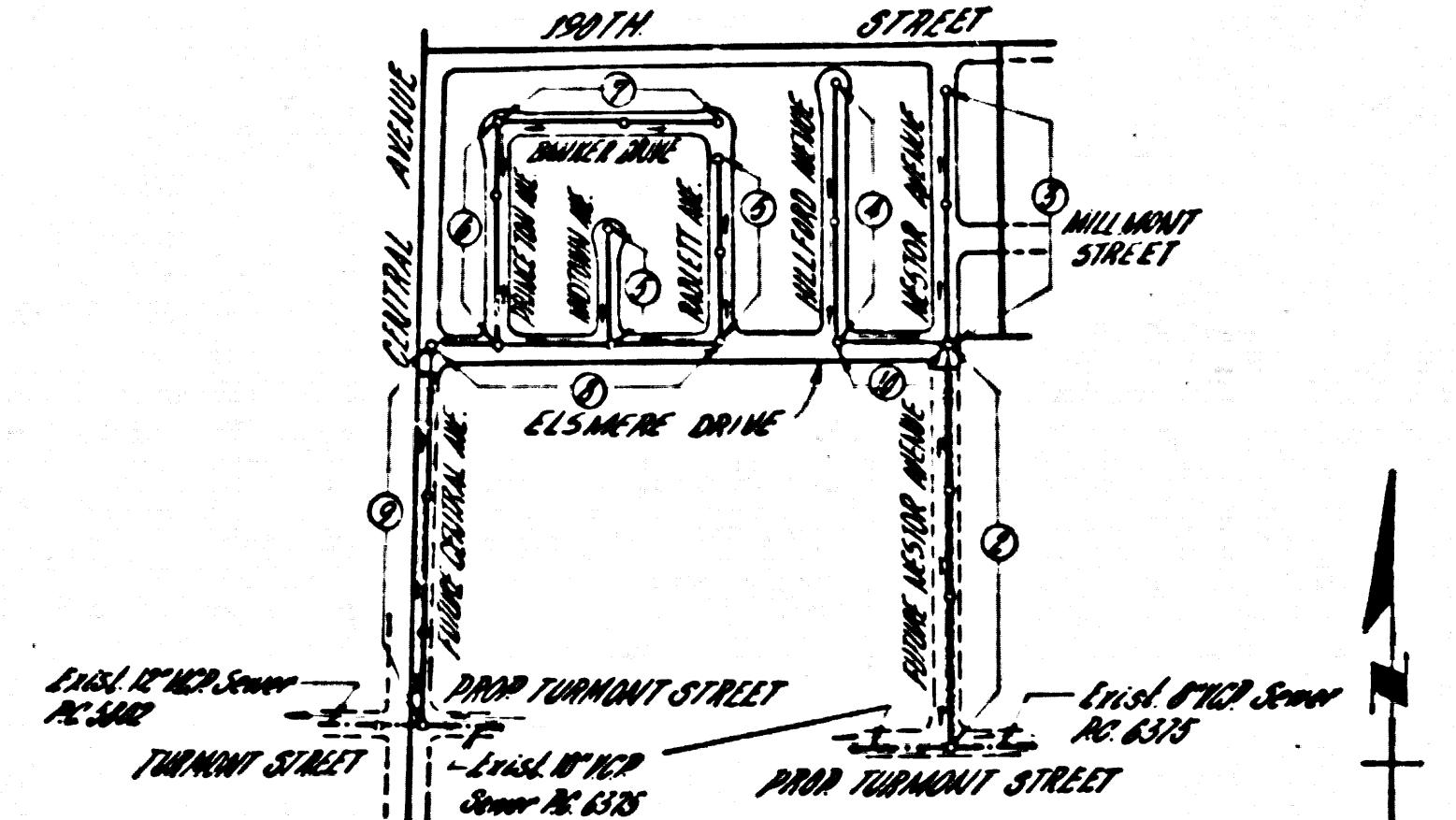


Bench Mark: 5Y-3965 Gardner Quad 1960  
 Spk. & L. in pavement 519 W. E. of Wilmington  
 Av. 2 2175' S. E. of Victoria St. 2 75' S. of T.P.  
 #549556 H. Elev. 108.886

16. IF DURING THE COURSE OF CONSTRUCTION IT IS DETERMINED THAT THERE IS LESS THAN FOUR FEET OF COVER OVER THE TOP OF A MAIN LINE OR HOUSE LATERAL P.C. SEWER WHICH IS NOT INDICATED ON THE PLANS, THE PIPE SHALL BE ENCASED PER S-A-112, CASE III, UNLESS OTHERWISE APPROVED BY THE COUNTY ENGINEER.



REVISION: MAY 20, 1964  
 ADDED 13 WYES ON SOUTH SIDE OF  
 ELSMERE DR., PAGE 8, ADDED 2 WYES  
 ON SOUTH SIDE OF ELSMERE DR. AND 8"  
 STUB @ 519 30300, PAGE 10  
 BY: J.R. Merrill  
 J.C.E. 10693  
 APPROVED: Ralph Schaf, 5/25/64

INDEX MAP  
 TRACT NO 27987  
 SCALE 1"=200'  
 PG. 6640

NO CONNECTIONS FOR THE DISPOSAL OF  
 INDUSTRIAL WASTES SHALL BE MADE TO  
 SEWERS SHOWN ON THESE DRAWINGS  
 WITHOUT WRITTEN PERMISSION FROM THE  
 CHIEF ENGINEER AND GENERAL MANAGER  
 OF THE COUNTY SANITATION DISTRICT.

NO CHARGE FOR  
 CONNECTIONS  
 C. W. Growth

PRIVATE ENGINEER'S  
 NOTICE TO CONTRACTOR  
 THE EXISTENCE AND LOCATION OF ANY UNDERGROUND UTILITY PIPES  
 OR STRUCTURES SHOWN IN THESE PLANS ARE OBTAINED BY A SEARCH  
 OF THE AVAILABLE RECORDS TO THE BEST OF OUR KNOWLEDGE.  
 THERE ARE NO EXISTING UTILITIES EXCEPT AS SHOWN ON THIS MAP.  
 THE CONTRACTOR IS REQUIRED TO TAKE PRECAUTIONARY MEASURES  
 TO PROTECT THE UTILITY LINES SHOWN AND ANY OTHER LINES  
 NOT OF RECORD OR NOT SHOWN ON THIS DRAWING.

DOUBLE SCALE  
 LENOIX BLDG. DIST. NO. 7

PROFILE ALIGNMENT AND GRADE OF P.C. 6640  
 SANITARY SEWERS PAGE 1  
 TO BE CONSTRUCTED IN J.N. 0360.88

TRACT NO 27987  
 PRIVATE CONTRACT NO. 6640

W.S. 26  
 5 SHEETS, 10 PAGES  
 SCALE: HORIZ. 1"=80' FEB., 1963  
 PREPARED IN THE OFFICES OF  
 ENGINEERING SERVICE CORPORATION  
 BY: J.R. Merrill  
 REG. C. E. NO. 13022  
 FOR LEGEND SEE PLAN NO. S-A-64

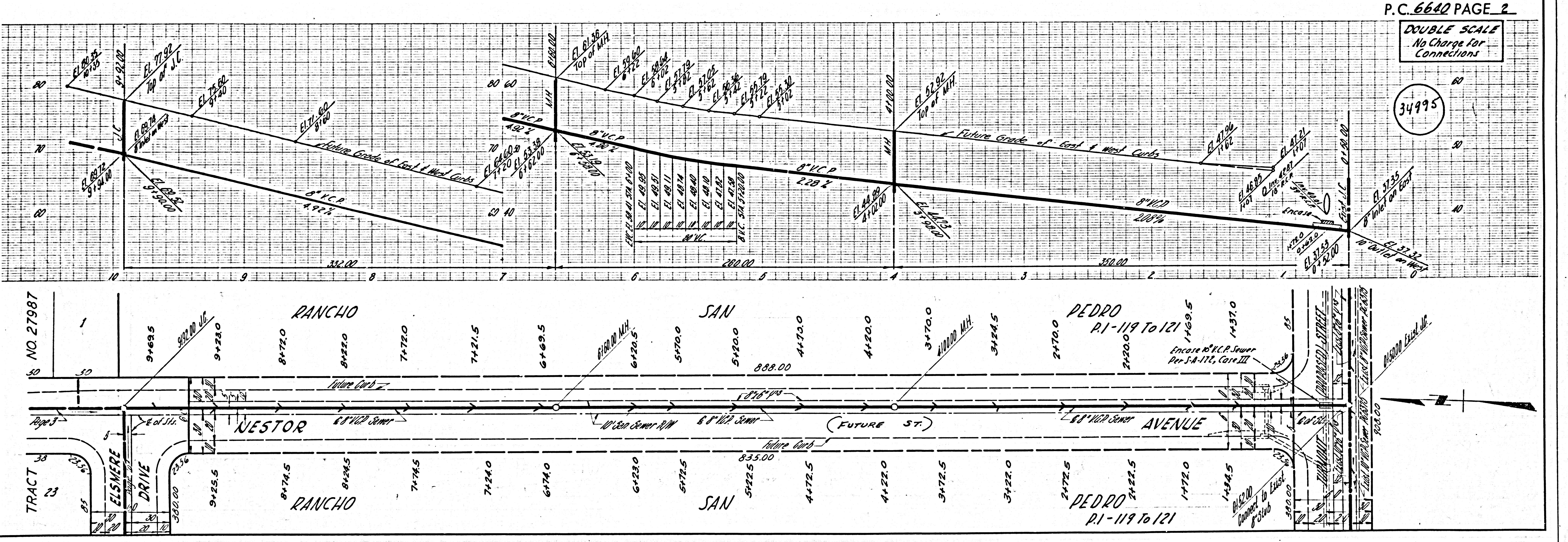
34994

- NOTES
- PROVIDE STAKES ON THE PROPERTY LINE OR PROPERTY LINES PRODUCED AT RIGHT ANGLES TO THE SEWER LINE AT THE CENTER LINE OF EACH MANHOLE.
  - NO REPRESENTATIVE OF THE COUNTY ENGINEER WILL SURVEY OR LAYOUT ANY PORTION OF THE WORK.
  - THE PRIVATE ENGINEER SHALL FURNISH THE COUNTY ENGINEER WITH GRADE SHEETS AND STATIONING FOR ALL HOUSE LATERALS AND Y BRANCHES AND SHALL PROVIDE STAKES FOR THEM AT THEIR PROPER LOCATIONS WITH STATIONING PLAINLY MARKED. ANY CHANGE IN ALIGNMENT SHALL BE REQUESTED IN WRITING BY THE PRIVATE ENGINEER.
  - NO REVISIONS SHALL BE MADE IN THESE PLANS WITHOUT THE APPROVAL OF THE COUNTY ENGINEER.
  - USE STANDARD MANHOLE FRAMES AND COVERS, S-A-117, EXCEPT AS NOTED.
  - USE 8" X 18" STRAIGHT PIPE, ALL PIPE STANDARD DEPTH EXCEPT AS NOTED.
  - USE MECHANICAL JOINTS FOR ALL PIPE EXCEPT S.A. 117.
  - REINFORCE ALL TRENCH WITHIN PAVED AREA TO MEET L.A. COUNTY ROAD DEPT., OR CALIF. STATE HIGHWAY DEPT., REQUIREMENTS IN ACCORDANCE WITH PERMITS.
  - IF A POWER POLE IS WITHIN THREE FEET OF THE SEWER, THE SEWER SHALL BE ENCASED PER S-A-112, CASE III, TWO FEET ON EACH SIDE FROM THE POINT OF INTERFERENCE.
  - HOUSE LATERALS TO BE CONSTRUCTED WITH INVERTS AT FRONTY LINE... 6... FEET BELOW CURB GRADE EXCEPT AS NOTED.
  - ALL STRUCTURES SHALL BE BRICK SEWER STRUCTURES, S.A. 104, PRECAST CONCRETE MANHOLES PER S-A-112 OR S-A-113 MAY BE USED AS ALTERNATE IN LOCATIONS APPROVED BY THE COUNTY ENGINEER.
  - FOR ALLOWABLE LEAKAGE TEST USE FORMULA NO. 1000, SPEC. SEC. 54.
  - MANHOLE TOPS IN UNIMPROVED RIGHTS-OF-WAY TO BE 4" ABOVE FINISHED GRADE.
  - THE PRIVATE ENGINEER IS TO FURNISH THE HOUSE LATERAL DEPTH AT THE PROPERTY LINE BELOW THE TOP OF CURB ELEVATION FOR EACH HOUSE LATERAL ON THE GRADE SHEET.
  - THE CONTRACTOR SHALL NOTIFY THE CONSTRUCTION DIVISION BY TELEPHONE, MAXIMUM 9-4747, EXT. 4352, AT LEAST 24 HOURS BEFORE STARTING ANY WORK UNDER THIS CONTRACT.
  - CONSTRUCTION SHALL BE IN ACCORDANCE WITH THE SPECIFICATIONS OF THIS PROJECT.
  - NO CONSTRUCTION SHALL BE PERMITTED IN CALLED AREAS UNLESS ACCORDABLE CERTIFICATION IS SUBMITTED TO THE CONSTRUCTION DIVISION OF THE COUNTY ENGINEER'S DEPARTMENT. THIS CERTIFICATION IS REQUIRED FOR ALL WORK UNDER THIS CONTRACT.
  - ALL HOUSE LATERALS SHALL BE CONSTRUCTED IN A STRAIGHT ALIGNMENT AT RIGHT ANGLES FROM THE MAIN LINE SEWER EXCEPT AS SHOWN ON THE PLANS.
  - ALL STATE AND LOCAL TECHNICAL SAFETY ORDERS WILL BE RIGIDLY ENFORCED.

ENGINEERING SERVICE CORPORATION 1127 W. WASHINGTON BLVD. LOS ANGELES 15, CALIF. RI. 9-7281	
REVISIONS	TRACED BY: C. W. Growth
	DES'G'D BY: C. W. Growth
	C.K'D BY: RMR
	SUBMITTED
SUB STRUCTURES OK'D	
W. G. NO. 7676-3	DATE May 1963

NOTE  
 GRADES TO WHICH THIS IMPROVEMENT IS TO BE CONSTRUCTED ARE SHOWN ON PLANS AND PROFILES. GRADE POINTS FOR TOP OF CURBS, CENTER LINE OF STREETS, OR CENTER LINE OF ALLEYS ARE SHOWN BY CIRCLES ON PROFILES AT ALL POINTS BETWEEN DESIGNATED POINTS THE GRADE SHALL BE ESTABLISHED SO AS TO CONFORM TO A STRAIGHT LINE DRAWN BETWEEN SAID DESIGNATED POINTS.  
 ELEVATIONS ARE IN FEET ABOVE U.S. & G.S. SEA LEVEL DATUM OF 1929.  
 THIS DRAWING AND THE DATA HEREON ARE HEREBY MADE A PART OF THE SPECIFICATIONS.  
 BEFORE WORK CAN BE STARTED, THE CONTRACTOR MUST OBTAIN A PERMIT TO EXCAVATE IN COUNTY STREETS FROM THE L.A. COUNTY ROAD DEPT., DISTRICT OFFICE NE 3, AND PAY A FEE TO THE COUNTY ENGINEER, ROOM 310 COUNTY ENGINEERS BLDG., 108 W. 222 ST., SUFFICIENT TO COVER THE COST OF CONSTRUCTION INSPECTION AND RECORD PLANS.  
 APPROVAL OF THIS PLAN BY THE COUNTY OF LOS ANGELES DOES NOT CONSTITUTE A REPRESENTATION AS TO THE ACCURACY OF THE LOCATION OF OR THE EXISTENCE OR NON-EXISTENCE OF ANY UNDERGROUND UTILITY PIPE, OR STRUCTURE WITHIN THE LIMITS OF THE PROJECT. THIS NOTE APPLIES TO ALL PAGES.  
 IF WORK IS TO BE DONE IN A STATE HIGHWAY, A PERMIT MUST BE OBTAINED FROM THE STATE OF CALIFORNIA, DIVISION OF HIGHWAYS, 120 SOUTH SPRING STREET.

COUNTY OF LOS ANGELES, CALIFORNIA  
 APPROVED, JOHN A. LAMBIE, COUNTY ENGINEER  
 APPROVED, J. R. Merrill, CHIEF ENGINEER  
 CO. SAN. DIST. NO. 9  
 BY: J. R. Merrill, CHIEF ENGINEER  
 BY: J. R. Merrill, CHIEF ENGINEER  
 CHECKED BY: Ralph Schaf, OFFICE ENGINEER  
 OFFICE OF COUNTY ENGINEER, REG. C. E. NO. 13906  
 SUBMITTED BY: Jack C. Lansing, REGIONAL ENGINEER  
 PEDRO VERDES - CANTONIA VALLEY REGIONAL ENGINEER



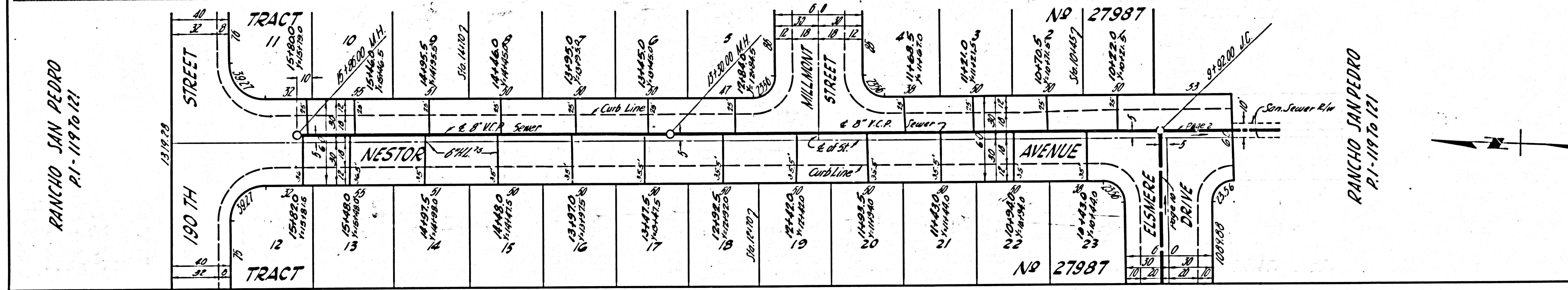
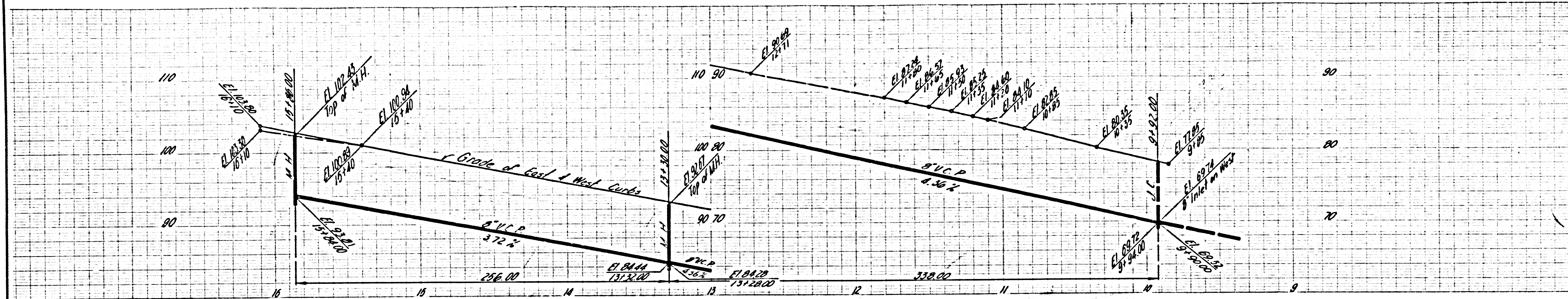
P.C. 6640 PAGE 2  
 DOUBLE SCALE  
 No Charge for  
 Connections

34995



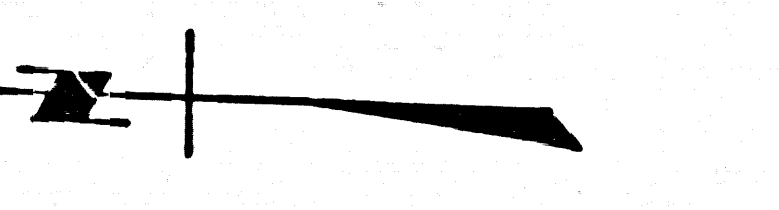
DOUBLE SCALE  
No Charge For  
Connections

34996



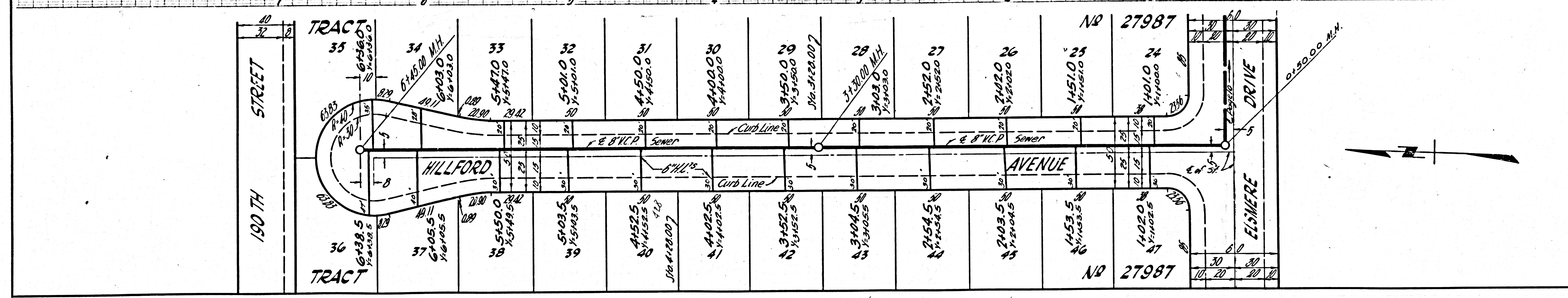
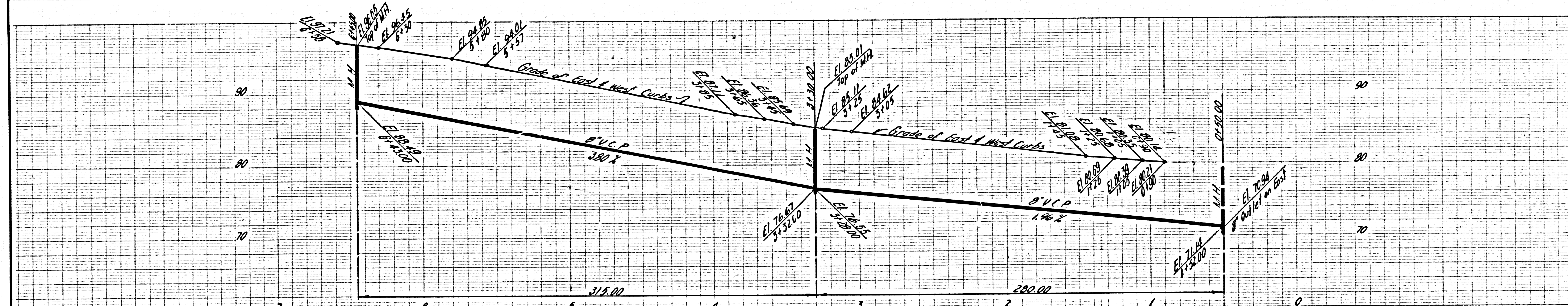
RANCHO SAN PEDRO  
P.I. 119 To 121

RANCHO SAN PEDRO  
P.I. 119 To 121



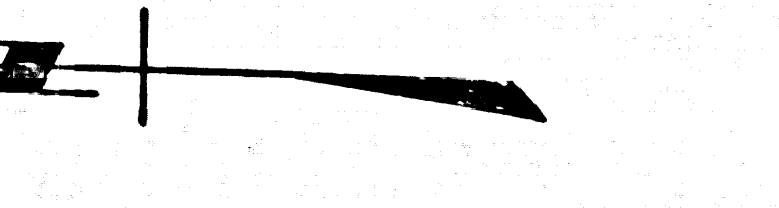
DOUBLE SCALE  
No Charge For  
Connections

34997



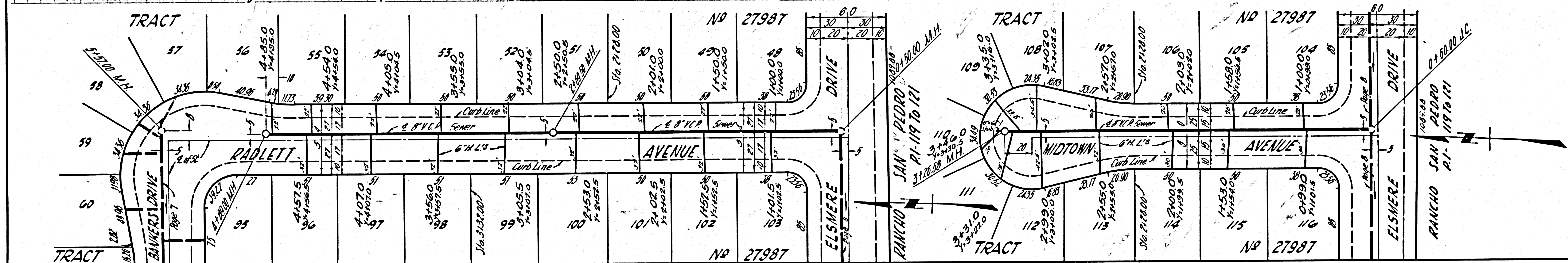
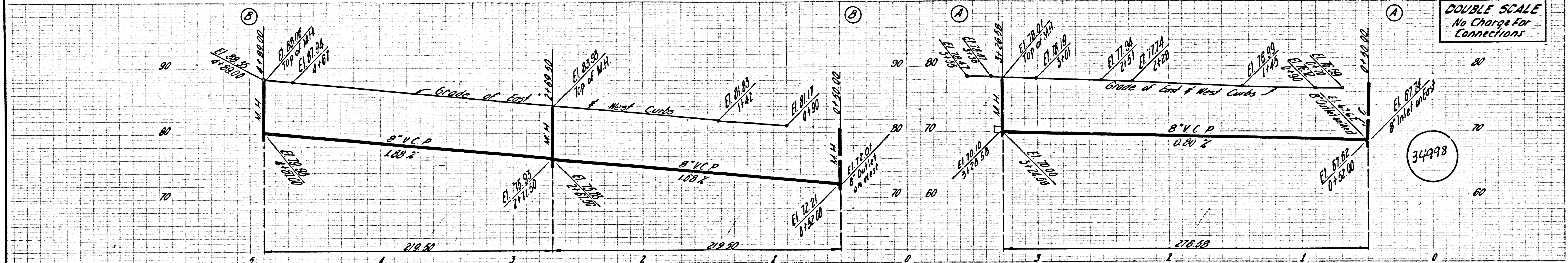
RANCHO SAN PEDRO  
P.I. 119 To 121

RANCHO SAN PEDRO  
P.I. 119 To 121

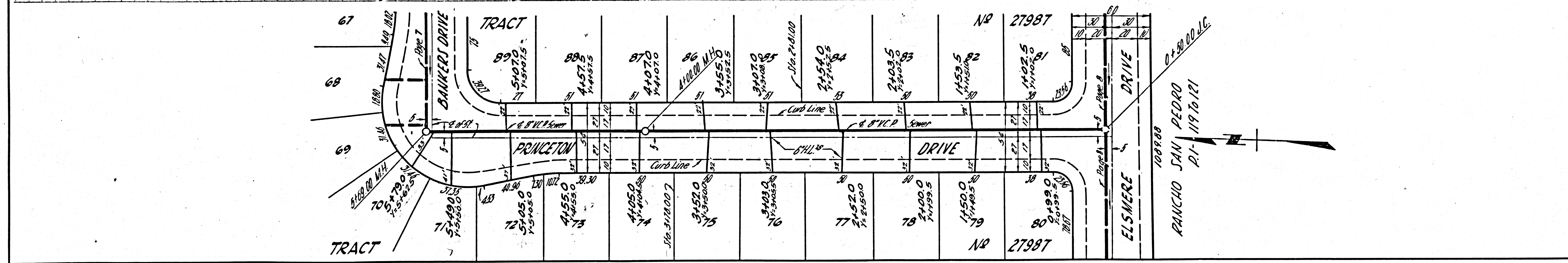
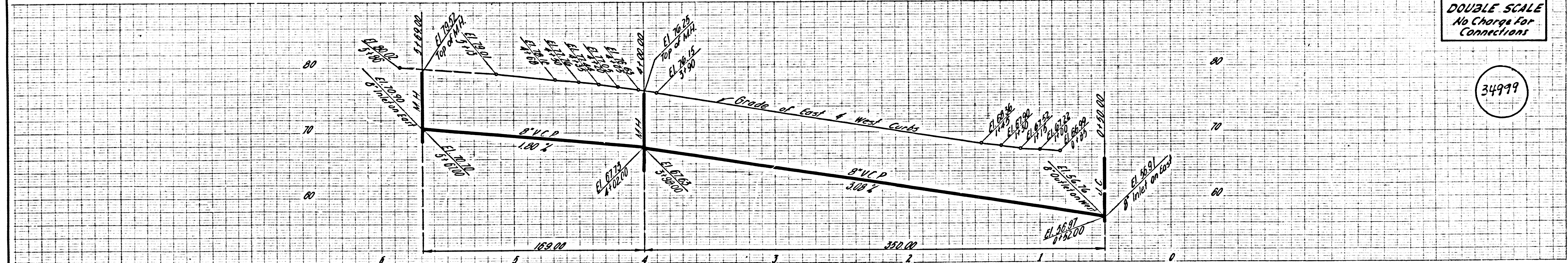




DOUBLE SCALE  
No Charge For  
Connections

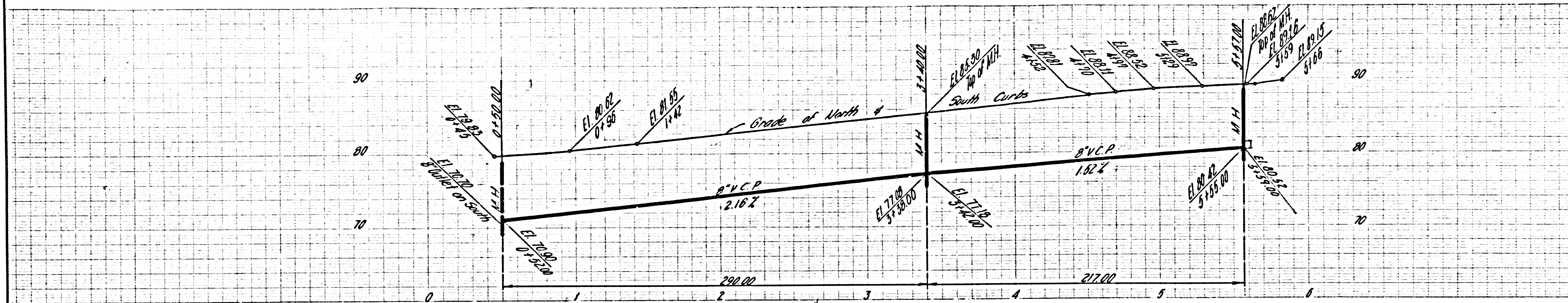


DOUBLE SCALE  
No Charge For  
Connections

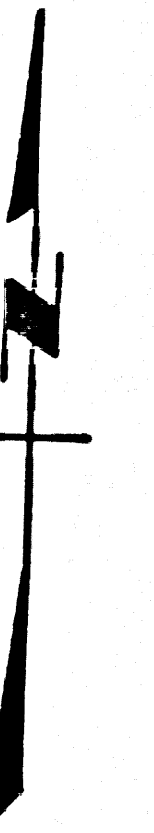
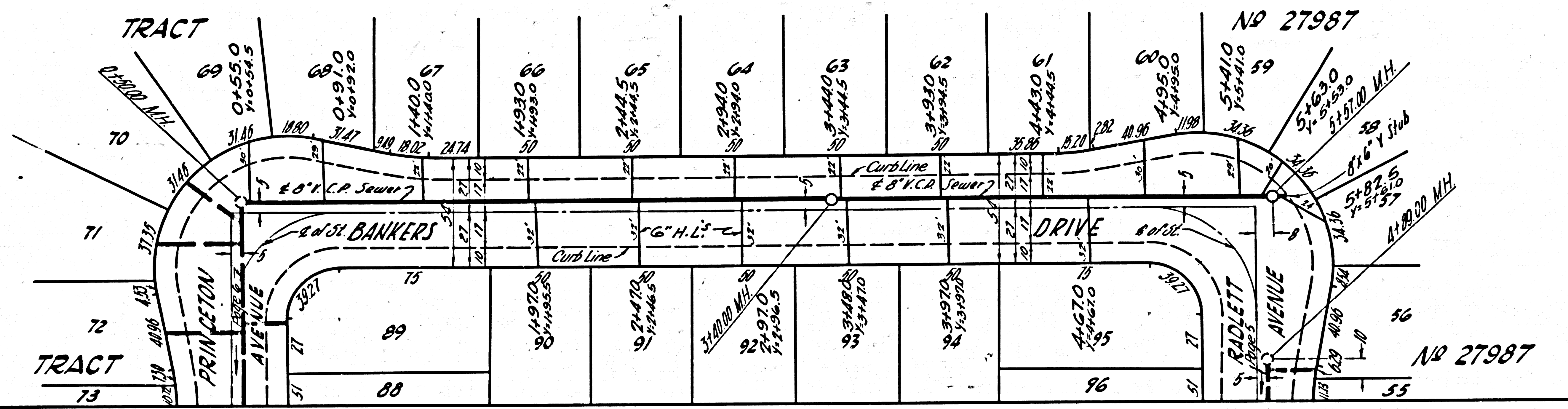




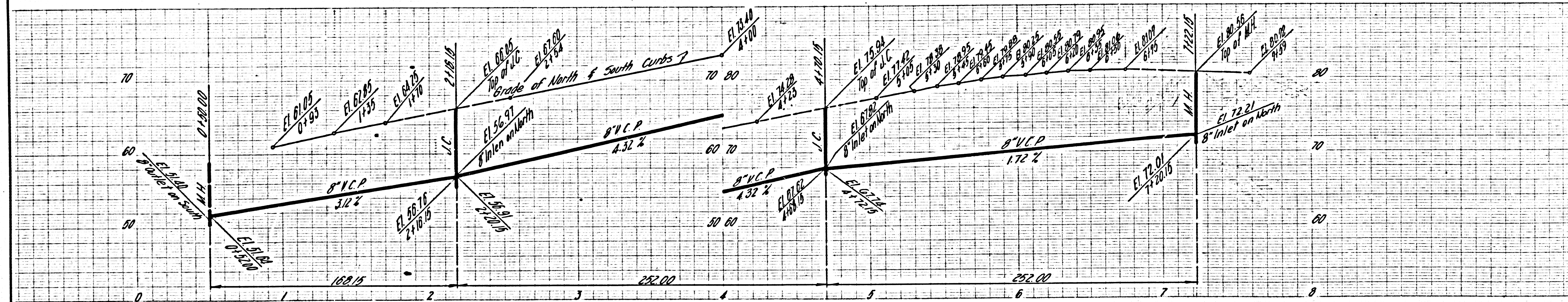
DOUBLE SCALE  
No Charge for  
Connections



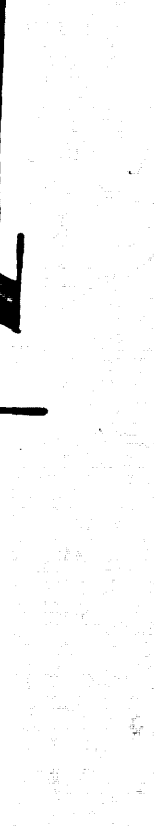
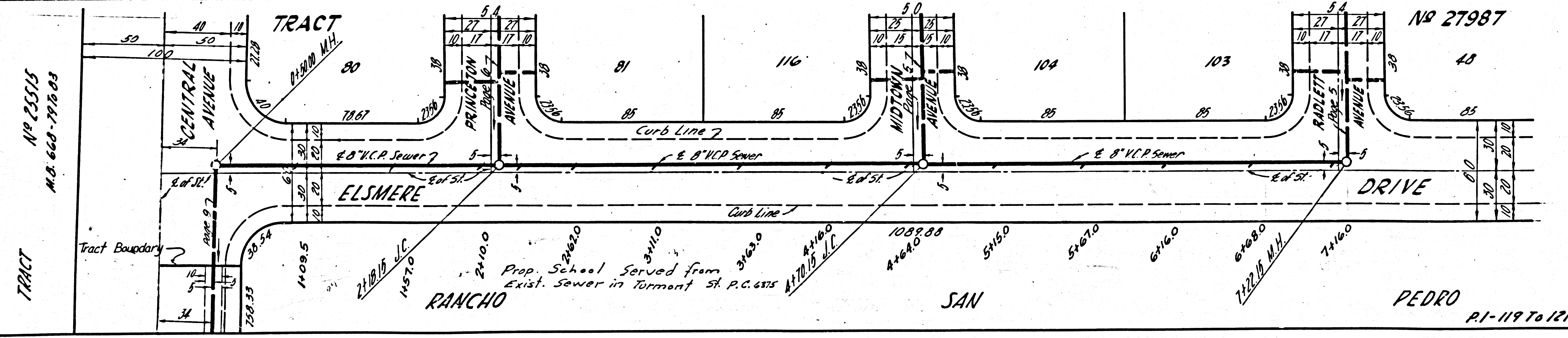
3500'



DOUBLE SCALE  
No Charge for  
Connections



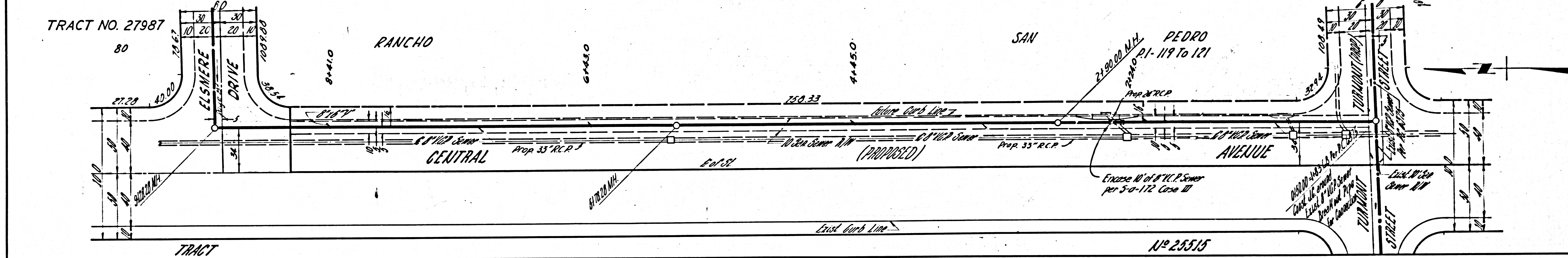
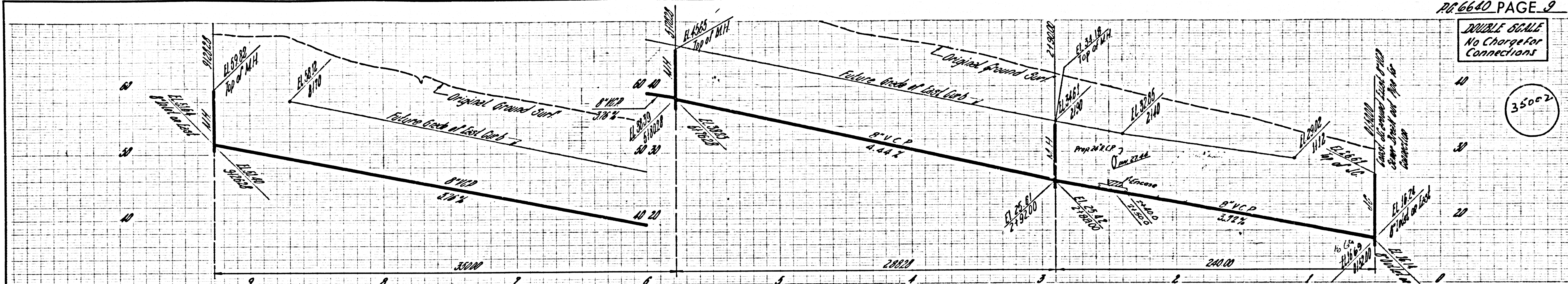
3500'





DOUBLE SCALE  
No Charge for  
Connections

3500'



DOUBLE SCALE  
No Charge for  
Connections

3500'

