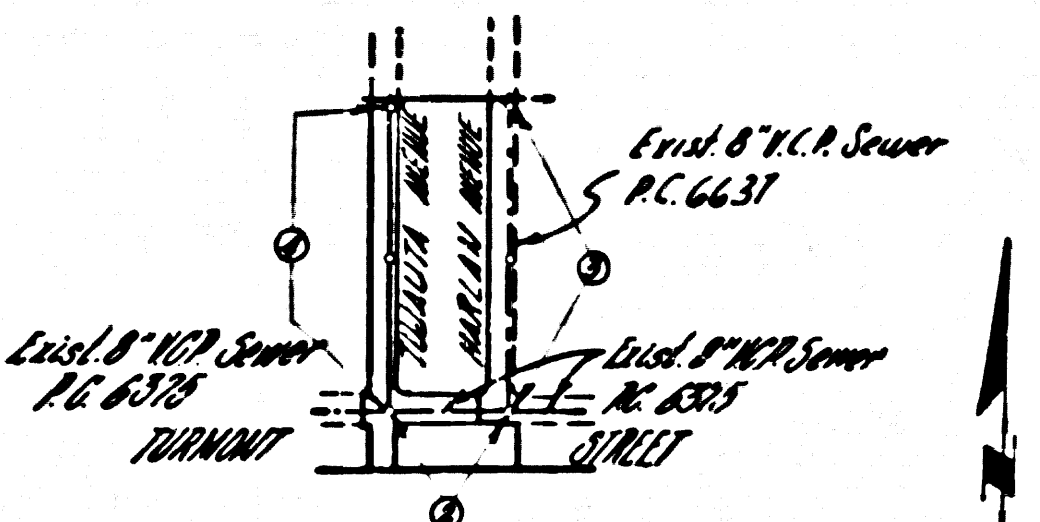


Bench Mark: SY-3965 Gardena Quad. 1960  
 Spk & L in pavement 319' W. & of Wilmington  
 Ave. ± 2175' S. & of Victoria St. ± 75' S. of T.P.  
 # 549556 H Elev. 108.086

15. IF DURING THE COURSE OF CONSTRUCTION IT IS DETERMINED THAT THERE IS LESS THAN FOUR FEET OF COVER OVER THE TOP OF A MAIN LINE OR HOUSE LATERAL S.C.P. SEWER WHICH IS NOT INDICATED ON THE PLANS, THE PIPE SHALL BE ENCASED PER S.A.-116, CASE III, UNLESS OTHER SERVICE APPROVED BY THE COUNTY ENGINEER.
16. ALL HOUSE LATERALS SHALL BE CONSTRUCTED IN A STRAIGHT ALIGNMENT AT RIGHT ANGLES FROM THE MAIN LINE SEWER EXCEPT AS SHOWN ON THE PLANS.



INDEX MAP  
 TRACT NO. 27985  
 SCALE 1"=600'  
 P.C. 6641

NO CONNECTIONS FOR THE DISPOSAL OF INDUSTRIAL WASTES SHALL BE MADE TO SEWERS SHOWN ON THESE DRAWINGS WITHOUT WRITTEN PERMISSION FROM THE CHIEF ENGINEER AND GENERAL MANAGER OF THE COUNTY SANITATION DISTRICTS.

Lots 1 to 13 incl. served in Norton Ave. P.C. 6631

NO CHARGE FOR CONNECTIONS  
*Richard DeWitt*

ISSUE NO HOUSE CONNECTION PERMITS UNTIL P.C. 6637 IS ACCEPTED

PRIVATE ENGINEER'S NOTICE TO CONTRACTOR  
 THE EXISTENCE AND LOCATION OF ANY UNDERGROUND UTILITY PIPE OR STRUCTURES SHOWN ON THESE PLANS ARE OBTAINED BY A SEARCH OF THE AVAILABLE RECORDS. TO THE BEST OF OUR KNOWLEDGE THERE ARE NO EXISTING UTILITIES EXCEPT AS SHOWN ON THIS MAP. THE CONTRACTOR IS REQUIRED TO TAKE PRECAUTIONARY MEASURES TO PROTECT THE UTILITY LINES SHOWN AND ANY OTHER LINES NOT OF RECORD OR NOT SHOWN ON THIS DRAWING.

DOUBLE SCALE  
 LENNOX BLDG. DIST. NO. 7

PROFILE ALIGNMENT AND GRADE OF P.C. 6641  
 SANITARY SEWERS PAGE 1  
 TO BE CONSTRUCTED IN JN 036089

TRACT NO. 27985  
 PRIVATE CONTRACT NO. 6641

W.S. 26  
 2 SHEETS, 4 PAGES  
 SCALE: VERT. 1"=4' HORIZ. 1"=40' MAY, 1963  
 PREPARED IN THE OFFICES OF  
 ENGINEERING SERVICE CORPORATION

34681

By: *J.R. Mowbray*  
 REG. C. E. NO. 13098  
 FOR LEGEND SEE PLAN NO. S-A-64

- NOTES:
1. PROVIDE STAKES ON THE PROPERTY LINE OR PROPERTY LINES PRODUCED AT RIGHT ANGLES TO THE SEWER LINE AT THE CENTER LINE OF EACH MANHOLE.
  2. NO REPRESENTATIVE OF THE COUNTY ENGINEER WILL SURVEY OR LAYOUT ANY PORTION OF THE WORK.
  3. THE PRIVATE ENGINEER SHALL FURNISH THE COUNTY ENGINEER WITH GRADE SHEETS AND STATION FOR ALL HOUSE LATERALS AND Y BRANCHES AND SHALL PROVIDE STAKES FOR THEM AT THEIR PROPER LOCATIONS WITH ELEVATIONS PLAINLY MARKED. ANY CHANGE IN ALIGNMENT SHALL BE REQUESTED IN WRITING BY THE PRIVATE ENGINEER.
  4. NO REVISIONS SHALL BE MADE IN THESE PLANS WITHOUT THE APPROVAL OF THE COUNTY ENGINEER.
  5. USE STANDARD MANHOLE FRAMES AND COVERS, S.A.-117, EXCEPT AS NOTED.
  6. USE EXTRA STRENGTH IRON AND ANNEaled STEEL EXCEPT AS NOTED.
  7. USE MECHANICAL COMPRESSION JOINTS FOR ALL S.C.P. PER SPEC'S 36, 48 & 49.
  8. RELOCATE ALL TREES WITHIN PAVED AREA TO MEET L.A. COUNTY ROAD DEPT. OR CALIF. STATE HIGHWAY DEPT. REQUIREMENTS IN ACCORDANCE WITH SPEC. 117.
  9. IF A POWER POLE IS WITHIN THREE FEET OF THE SEWER, THE SEWER SHALL BE ENCASED, PER S.A.-116, CASE III, TWO FEET ON EACH SIDE FROM THE POINT OF INTERFERENCE.
  10. HOUSE LATERALS TO BE CONSTRUCTED WITH INVERTS AT PROPERTY LINE \_\_\_\_\_ FEET BELOW CURB GRADE EXCEPT AS NOTED.
  11. ALL STRUCTURES SHALL BE BUILT BY STRUCTURES, S.A.101 EXCEPT QUANTITY ADJUSTED PER S.A.-113 OR S.A.-115.
  12. FOR ALLOWABLE LEAKAGE TEST USE FORMULA NO. \_\_\_\_\_ SPEC. 36, SEC. 36.
  13. MANHOLE TOPS IN UNIMPROVED RIGHTS-OF-WAY TO 4" ABOVE FINISHED GRADE.
  14. THE PRIVATE ENGINEER IS TO FURNISH THE HOUSE LATERAL DEPTH AT THE PROPERTY LINE BELOW THE TOP OF CURVE ELEVATION FOR EACH HOUSE LATERAL ON THE GRADE SHEET.
  15. THE CONTRACTOR SHALL NOTIFY THE CONSTRUCTION DIVISION BY TELEPHONE, MADISON 9-4742, EXT. 2352 AT LEAST 24 HOURS BEFORE STARTING ANY WORK UNDER THIS CONTRACT.
  16. SPECIFICATIONS DATED 1962 ARE APPLIED IN THE CONSTRUCTION OF THIS PROJECT.
  17. NO WORK CONTINGENT SHALL BE PERMITTED IN FILLED AREAS UNLESS ACCEPTABLE CERTIFICATION IS SUBMITTED TO THE CONSTRUCTION DIVISION OF THE COUNTY ENGINEER'S ADMINISTRATION AND CONSTRUCTION IS BEGUN WITHIN 90 DAYS OF THE DATE OF THE CONTRACT.
  18. IF CONSTRUCTION IS DELAYED MORE THAN 90 DAYS, CONTRACTOR SHALL SUBMIT A PLAN FOR THE PROTECTION OF ALL SHOWN ON PLANS.
  19. IF CONSTRUCTION IS DELAYED MORE THAN 90 DAYS, CONTRACTOR SHALL SUBMIT A PLAN FOR THE PROTECTION OF ALL SHOWN ON PLANS.
  20. ALL STATE AND LOCAL TECHNICAL SAFETY ORDERS WILL BE RIGIDLY ENFORCED.

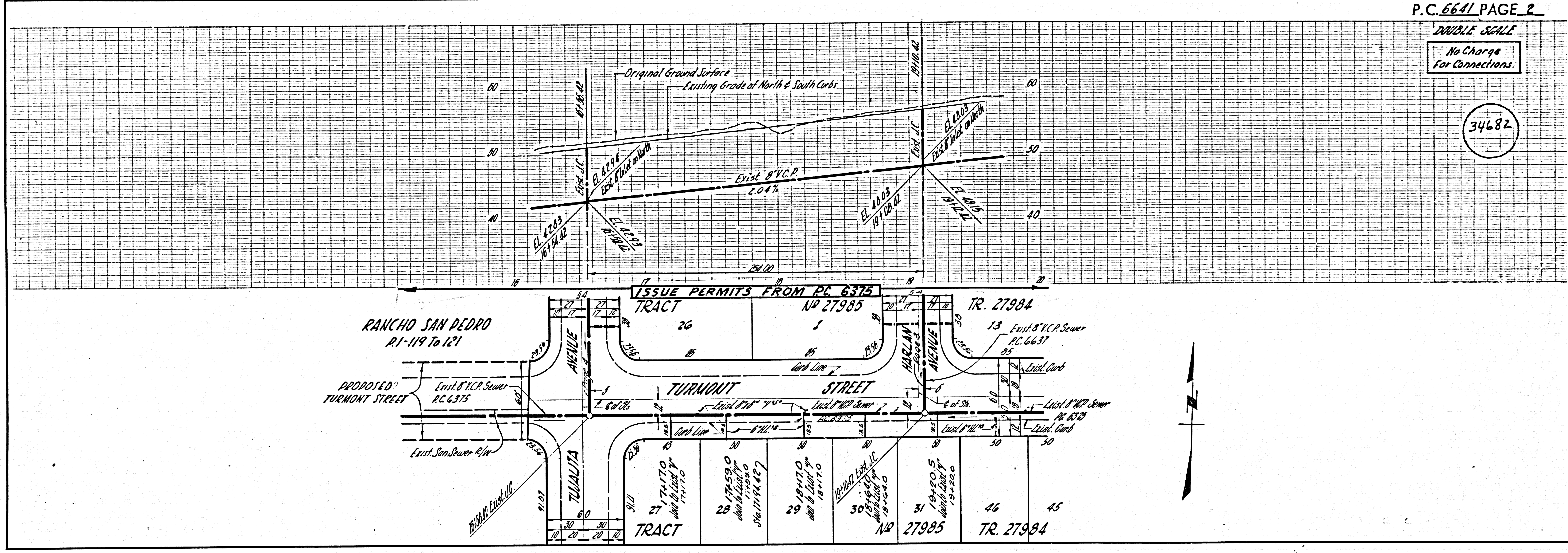
ENGINEERING SERVICE CORPORATION	
1127 W. WASHINGTON BLVD. LOS ANGELES 15, CALIF. RI. 9-7281	
REVISIONS	TRACED BY: <i>DL</i>
	DES'G'D BY: <i>LD</i>
	CK'D BY: <i>CLR</i>
	SUBMITTED
SUB STRUCTURES OK'D	
W. O. NO.	DATE
76-78-3	MAY, 1963
DWG. NO.	SCALE
	AS SHOWN
L. B.	P. B.

NOTE:  
 GRADES TO WHICH THIS IMPROVEMENT IS TO BE CONSTRUCTED ARE SHOWN ON PLANS AND PROFILES. GRADE POINTS FOR TOP OF CURBS, CENTER LINE OF STREETS, OR CENTER LINE OF ALLEES ARE SHOWN BY CIRCLES ON PROFILES AT ALL POINTS BETWEEN DESIGNATED POINTS. THE GRADE SHALL BE ESTABLISHED SO AS TO CONFORM TO A STRAIGHT LINE DRAWN BETWEEN SAID DESIGNATED POINTS.  
 ELEVATIONS ARE IN FEET ABOVE U.S.G.S. DATUM OR MEAN SEA LEVEL.  
 THIS DRAWING AND THE DATA HEREON ARE HEREBY MADE A PART OF THE SPECIFICATIONS.  
 WORK SHALL BE CONSTRUCTED ACCORDING TO SPECIFICATIONS ON FILE IN THE OFFICE OF THE COUNTY ENGINEER AND SHALL BE PROSECUTED IN THE PRESENCE OF THE COUNTY ENGINEER.  
 BEFORE WORK CAN BE STARTED, THE CONTRACTOR MUST OBTAIN A PERMIT TO EXCAVATE IN COUNTY STREETS FROM THE L. A. COUNTY ROAD DEPT. PERMIT NO. 7 AND PERMIT NO. 77 FROM THE COUNTY ENGINEER, ROOM 360 COUNTY COURTHOUSE AND PERMIT NO. 78 FROM THE COUNTY ENGINEER, ROOM 360 COUNTY COURTHOUSE.  
 APPROVAL OF THIS PLAN BY THE COUNTY OF LOS ANGELES DOES NOT CONSTITUTE A REPRESENTATION AS TO THE ACCURACY OF THE LOCATION OF OR THE EXISTENCE OR NON-EXISTENCE OF ANY UNDERGROUND UTILITY PIPE, OR STRUCTURE WITHIN THE LIMITS OF THIS PROJECT. THIS NOTE APPLIES TO ALL PAGES.  
 IF WORK IS TO BE DONE IN A STATE HIGHWAY, A PERMIT MUST BE OBTAINED FROM THE STATE OF CALIFORNIA, DIVISION OF HIGHWAYS, 120 SOUTH SPRING STREET.  
 COUNTY OF LOS ANGELES, CALIFORNIA  
 APPROVED, JOHN A. LAMBE, COUNTY ENGINEER  
 APPROVED, *J.D. BARNETT*, CHIEF ENGINEER  
 BY: *Richard S. Kern*, A.S.T. SANITATION ENGINEER  
 BY: *J. D. Barnett*, OFFICE ENGINEER  
 CHECKED BY: *Ralph Schaffner*  
 OFFICE OF COUNTY ENGINEER, REG. C. E. NO. 13986  
 SUBMITTED BY: *Jack C. Lansing*, DISTRICT ENGINEER - SOUTHWEST VALLEY REGIONAL ENGINEER

P.C. 6641 PAGE 2

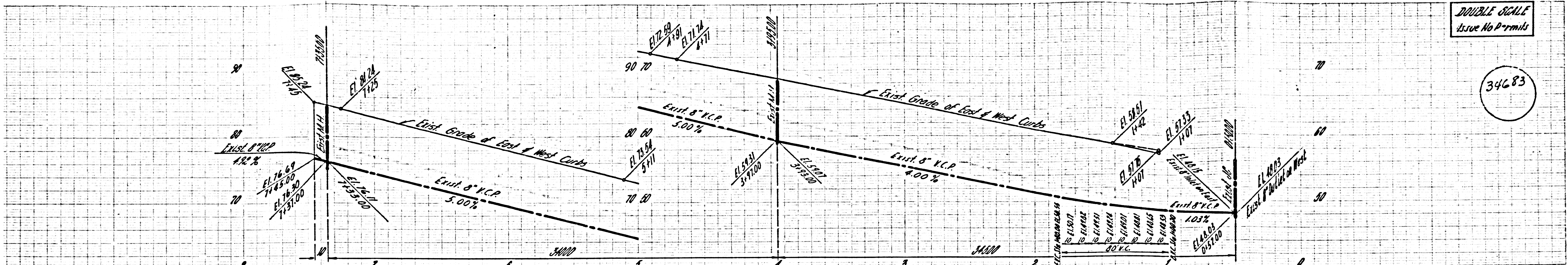
DOUBLE SCALE  
 No Charge For Connections

34682

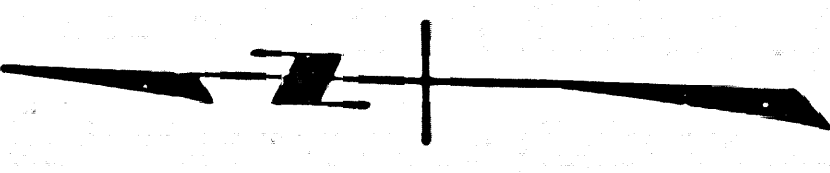


DOUBLE SCALE  
Issue No Permits

34683

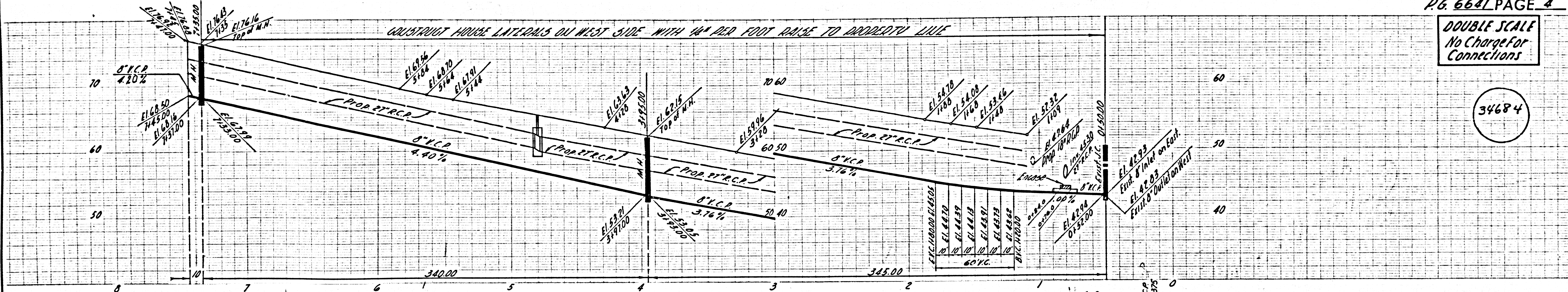


TRACT	1	2	ISSUE	3	4	ALL	5	6	PERMITS	7	8	FROM	9	10	RC. 6637	11	12	13	NO	27984	14	15	16	17	18	19	20	21	22	23	24	25	26	27	28	29	30	31
TRACT	13	12	ISSUE	11	10	ALL	9	8	PERMITS	7	6	FROM	5	4	RC. 6637	3	2	1	NO	27985	12	11	10	9	8	7	6	5	4	3	2	1	0	0	0	0	0	

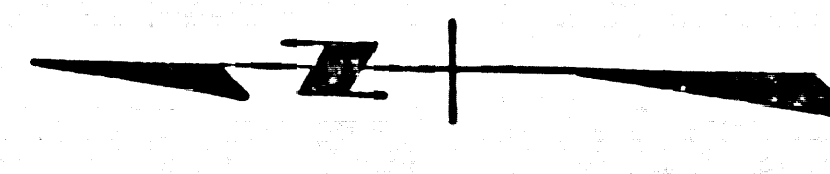


DOUBLE SCALE  
No Charge for  
Connections

34684



TRACT	14	15	16	17	18	19	20	21	22	23	24	25	26	27
TRACT	14	15	16	17	18	19	20	21	22	23	24	25	26	27



6" H.L. as noted above-inclusive  
Encase 8" of 6" H.L. per 54-172, Case III