

DOUBLE VERTICAL SCALE
LA PUENTE BLDG. DIST. NO. 2

PROFILE ALIGNMENT AND GRADE OF **P.C. 6643**
SANITARY SEWERS PAGE 1
 TO BE CONSTRUCTED IN **J.N. 0360.90**
TRACT N° 27274

PRIVATE CONTRACT NO. 6643

W.S. 97
 2 SHEETS; 3 PAGES

SCALE: VERT. 1"=4'
 HORIZ. 1"=40'
 DATE: **JUNE 1963**
 PREPARED IN THE OFFICES OF
KEMMERER ENGR. CO. INC.

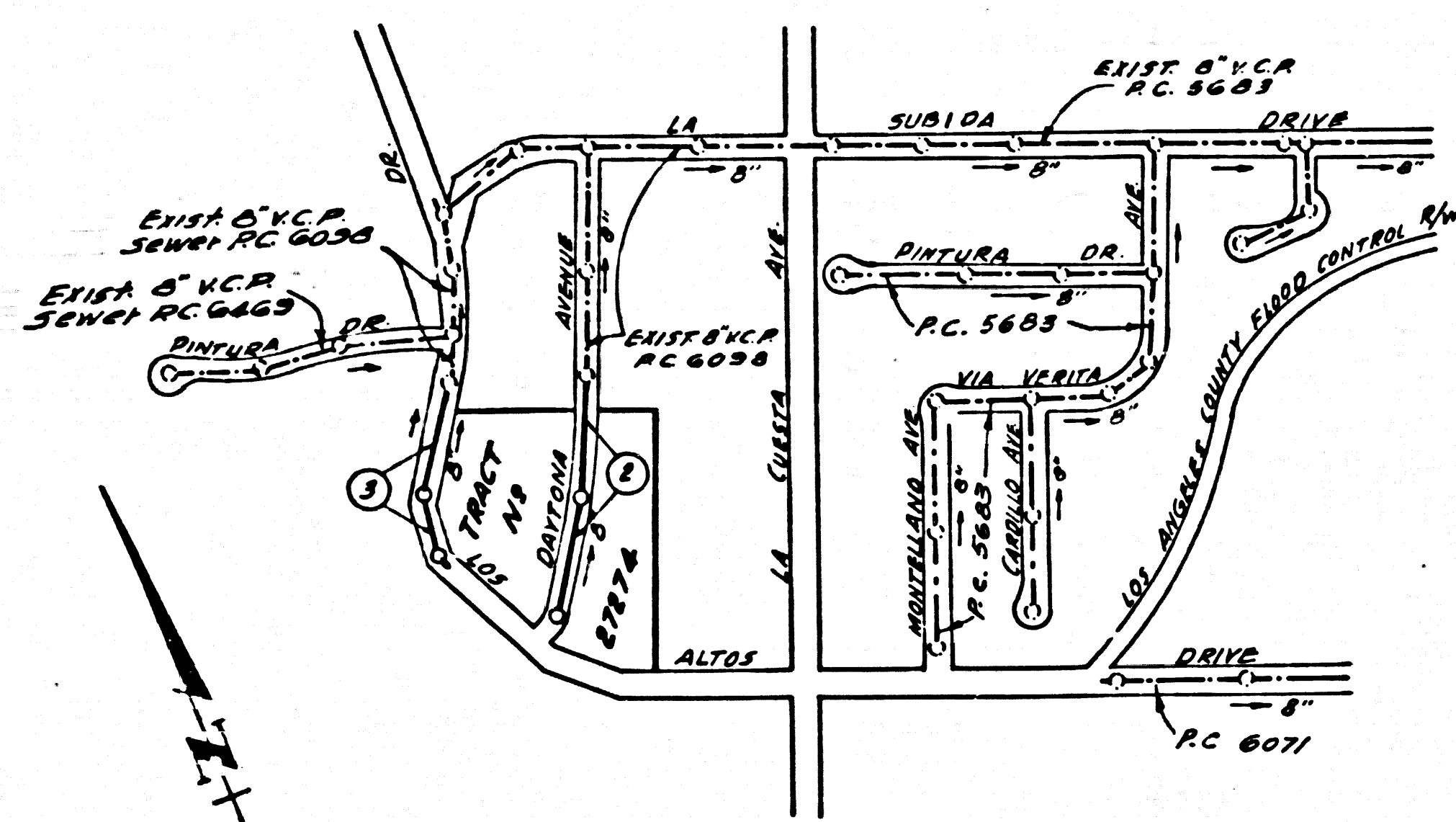
By: **Robert R. Flores**
 REG. C. E. NO. 11349

FOR LEGEND SEE PLAN NO. S.A-64

NOTE:
 GRADES TO WHICH THIS IMPROVEMENT IS TO BE CONSTRUCTED ARE SHOWN ON PLANS AND PROFILES. GRADE POINTS FOR TOP OF CURBS, CENTER LINE OF STREETS OR CENTER LINE OF ALLEYS ARE SHOWN BY CIRCLES ON PROFILES. AT ALL POINTS BETWEEN DESIGNATED POINTS THE GRADE SHALL BE ESTABLISHED SO AS TO CONFORM TO A STRAIGHT LINE DRAWN BETWEEN SAID DESIGNATED POINTS.
 ELEVATIONS ARE IN FEET ABOVE U.S.C. & G.S. SEA LEVEL DATUM OF 1929.
 THIS DRAWING AND THE DATA HEREON ARE HEREBY MADE A PART OF THE SPECIFICATIONS.
 WORK SHALL BE CONSTRUCTED ACCORDING TO SPECIFICATIONS ON FILE IN THE OFFICE OF THE COUNTY ENGINEER AND SHALL BE PROSECUTED ONLY IN THE PRESENCE OF THE COUNTY ENGINEER.
 BEFORE WORK CAN BE STARTED, THE CONTRACTOR MUST OBTAIN A PERMIT TO EXCAVATE IN COUNTY DISTRICTS FROM THE L.A. COUNTY ROAD DEPT. DISTRICT OFFICE NO. 1 AND PAY A FEE TO THE COUNTY ENGINEER, ROOM 300 L.A. COUNTY ANIMEX BLDG. 400 W. 2ND ST. A. SUFFICIENT TO COVER THE COST OF CONSTRUCTION INSPECTION AND RECORD PLANS.
 APPROVAL OF THIS PLAN BY THE COUNTY OF LOS ANGELES DOES NOT CONSTITUTE A REPRESENTATION AS TO THE ACCURACY OF THE LOCATION OF OR THE EXISTENCE OR NON-EXISTENCE OF ANY UNDERGROUND UTILITY PIPE, OR STRUCTURE WITHIN THE LIMITS OF THIS PROJECT. THIS NOTE APPLIES TO ALL PAGES.
 IF WORK IS TO BE DONE IN A STATE HIGHWAY, A PERMIT MUST BE OBTAINED FROM THE STATE OF CALIFORNIA, DIVISION OF HIGHWAYS, 120 SOUTH SPRING STREET.

COUNTY OF LOS ANGELES, CALIFORNIA
 APPROVED, JOHN A. LAMBE, COUNTY ENGINEER
 APPROVED, J. DANFORTH, CHIEF ENGINEER
 GO. SAN. DIST. NO. 21
 BY: **Russ E. Kline** ASST. SANITATION ENGINEER
 BY: **J. Danforth** OFFICE ENGINEER
 CHECKED BY: **Henry Lee** 1-21-63
 OFFICE OF COUNTY ENGINEER, REG. C. E. NO. 10883

SUBMITTED: **Edwin W. Kneifel** 8-19-63
 SAN DIEGO REGIONAL ENGINEER



INDEX MAP
 TRACT N° 27274
 P.C. 6643
 SCALE: 1"=500'

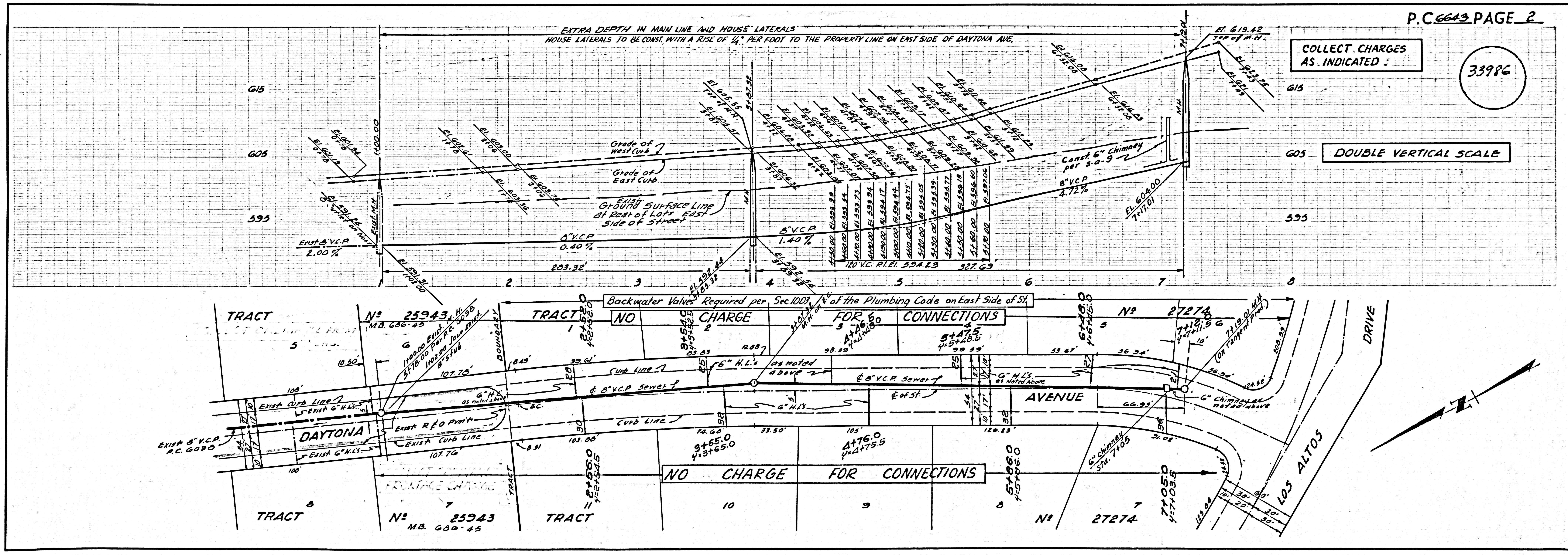
NOTE:
 The Existence and Approximate Location of Underground Utilities or Structures Shown on These Plans Were Determined By A Search of The Available Public Records. To The Best of Our Knowledge There Are No Existing Underground Utilities or Structures Except as Shown on These Plans.
 The Contractor is Required to Take Due Precautionary Measures to Protect The Utilities or Structures Shown and Any Other Utility or Structure at the Site. It Shall Be The Contractor's Responsibility to Notify The Owners of The Utilities or Structures Concerned Before Starting Work.

- NOTES:
1. PROVIDE STAKES ON THE PROPERTY LINE OR PROPERTY LINES PRODUCED AT RIGHT ANGLES TO THE SEWER LINE AT THE CENTER LINE OF EACH MANHOLE.
 2. NO REPRESENTATIVE OF THE COUNTY ENGINEER WILL SURVEY OR LAY OUT ANY PORTION OF THE WORK.
 3. THE OWNER OR HIS AUTHORIZED REPRESENTATIVE SHALL FURNISH THE COUNTY ENGINEER WITH GRADE SHEETS AND STATIONING FOR ALL HOUSE LATERALS AND Y BRANCHES AND SHALL PROVIDE STAKES FOR THEM AT THEIR PROPER LOCATIONS WITH STATIONING PLAINLY MARKED. ANY CHANGE IN LOCATION SHALL BE REQUESTED IN WRITING BY THE OWNER OR HIS REPRESENTATIVE.
 4. THE PRIVATE ENGINEER SHALL FURNISH THE HOUSE LATERAL DEPTH AT THE PROPERTY LINE BELOW THE TOP OF CURB ELEVATION FOR EACH HOUSE LATERAL ON THE GRADE SHEET.
 5. NO REVISIONS SHALL BE MADE IN THESE PLANS WITHOUT THE APPROVAL OF THE COUNTY ENGINEER.
 6. USE STANDARD MANHOLE FRAMES AND COVERS, S-117.
 7. USE EXTRA STRENGTH IRP, ALL PIPES EXTRA DEPTH.
 8. USE MECHANICAL COMPRESSION JOINTS FOR ALL V.C.P. PER SPECS. SECS. 16 & 4, § 49.
 9. RESURFACE ALL TRENCH WITHIN PAVED AREA TO MEET L.A. COUNTY ROAD DEPT. OR CALIF. STATE HIGHWAY REQUIREMENTS IN ACCORDANCE WITH PERMITS.
 10. ENCASE FOUR FEET OF SEWER AT POINTS OF INTERFERENCE WITH POLES, CASE NO. S-172.
 11. HOUSE LATERALS TO BE CONSTRUCTED WITH INVERTS AT PROPERTY LINE 6 FEET BELOW CURB GRADE EXCEPT AS NOTED.
 12. ALL MANHOLES SHALL BE BRICK SEWER STRUCTURES, 3'-10" OR PRECAST CONCRETE MANHOLE PER S-115.
 13. FOR ALLOWABLE LEAKAGE TEST USE FORMULA NO. 2 PER SPECS. SEC. 54.
 14. THE CONTRACTOR SHALL NOTIFY THE CONSTRUCTION DIVISION BY TELEPHONE, MADRON 5-47, OR BY MAIL, AT LEAST TWENTY-FOUR HOURS BEFORE STARTING ANY WORK UNDER THIS CONTRACT.
 15. STANDARD SPECIFICATIONS DATED MAY 24, 1962 APPLY IN THE CONSTRUCTION OF THIS PROJECT.
 16. ALL STATE & LOCAL TRENCH SAFETY ORDERS WILL BE RIGIDLY ENFORCED.
 17. ALL HOUSE LATERALS SHALL BE CONSTRUCTED IN A STRAIGHT ALIGNMENT AT RIGHT ANGLES FROM THE MAIN LINE SEWER EXCEPT AS SHOWN ON THE PLANS. HOUSE LATERALS FROM CHIMNEYS SHALL NOT HAVE AN ANGLE OF LESS THAN 45° WITH THE MAIN LINE SEWER. ANY CHANGE IN ALIGNMENT SHALL BE REQUESTED IN WRITING BY THE PRIVATE ENGINEER.

BENCH MARK
 S.E. COR. OF CONC. WEIR BOX AT N.E. COR. OF LA CUESTA AVE. & LOS ALTOS DR. 230' N. & 36' E. INT.
 ELEV. 595.397 WHITTIER QUAD. 1955

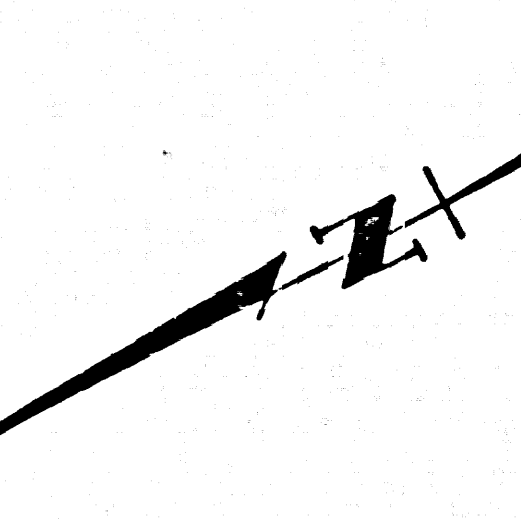
COLLECT CHARGES AS INDICATED
Sherald H. Kenney 8-13-63

NO CONNECTIONS FOR THE DISPOSAL OF INDUSTRIAL WASTES SHALL BE MADE TO SEWERS SHOWN ON THESE DRAWINGS WITHOUT WRITTEN PERMISSION FROM THE CHIEF ENGINEER AND GENERAL MANAGER OF THE COUNTY SANITATION DISTRICTS.



COLLECT CHARGES AS INDICATED
33986

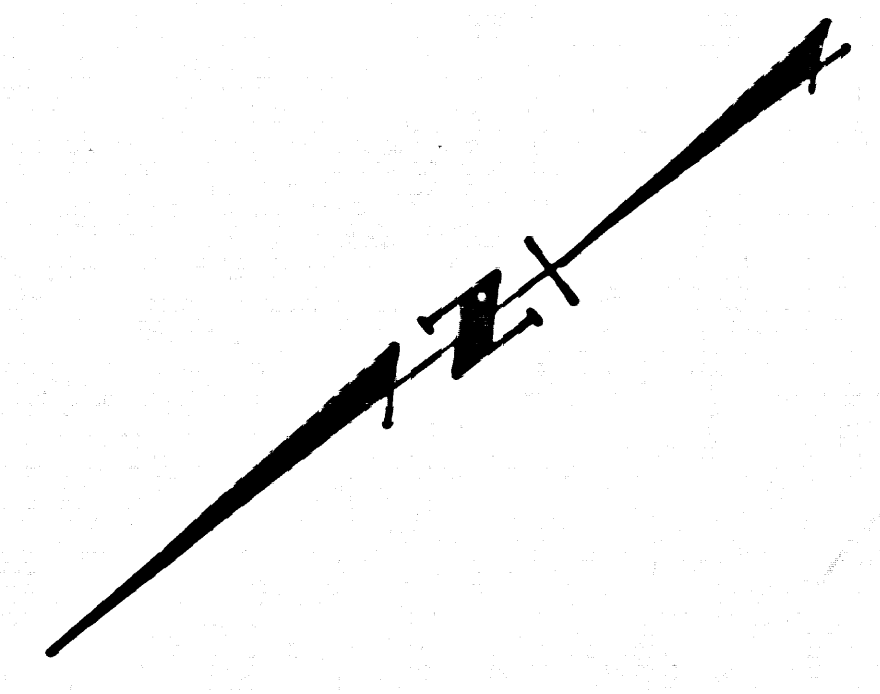
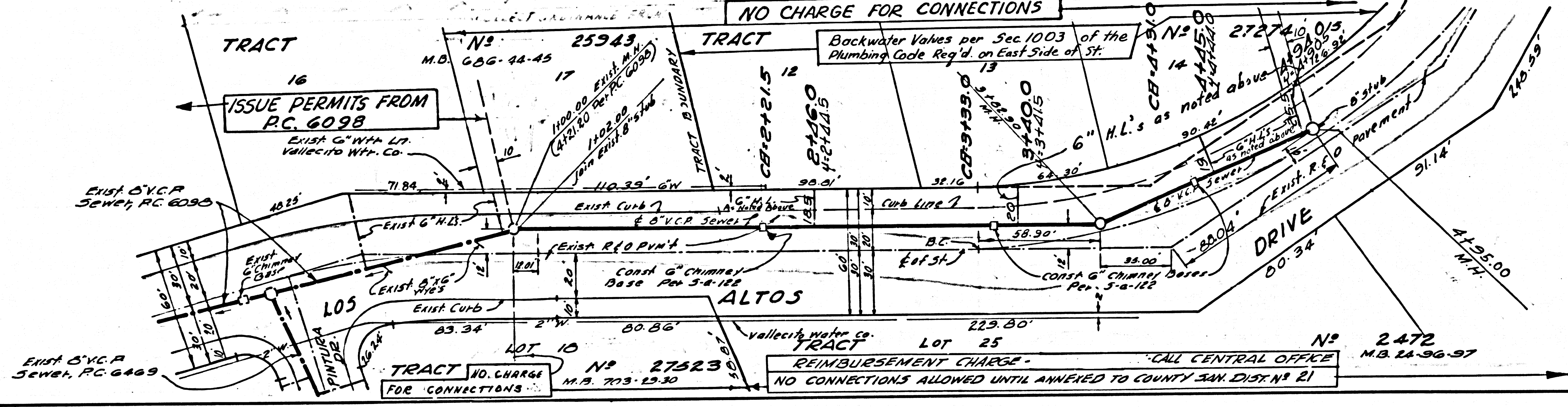
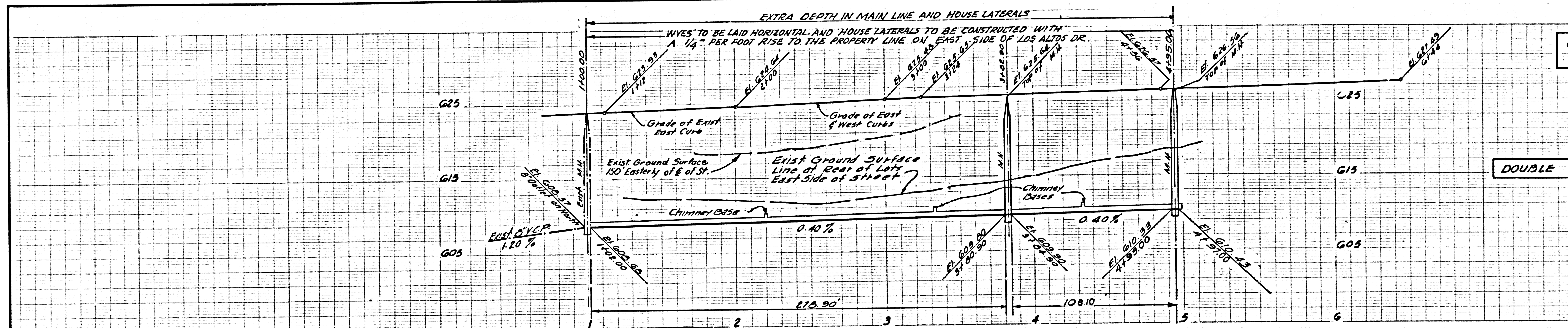
DOUBLE VERTICAL SCALE



COLLECT CHARGES AS INDICATED

33987

DOUBLE VERTICAL SCALE



5
E420 2A 4555 N TRACT

27074

4 27 17 11 8 1/2 8 1/2 11 17 27