

B.M. 24-6124-A ELEV. 20.125  
 SET L & B.M. CONC. 2 1/4" OF HOUSE  
 N 8 21' 03" VERA ST. 83' 1" WEST OF  
 E & 110' 2" N. CARSON ST. MKD. B.M.  
 GAZDELA QUAD. 19 00

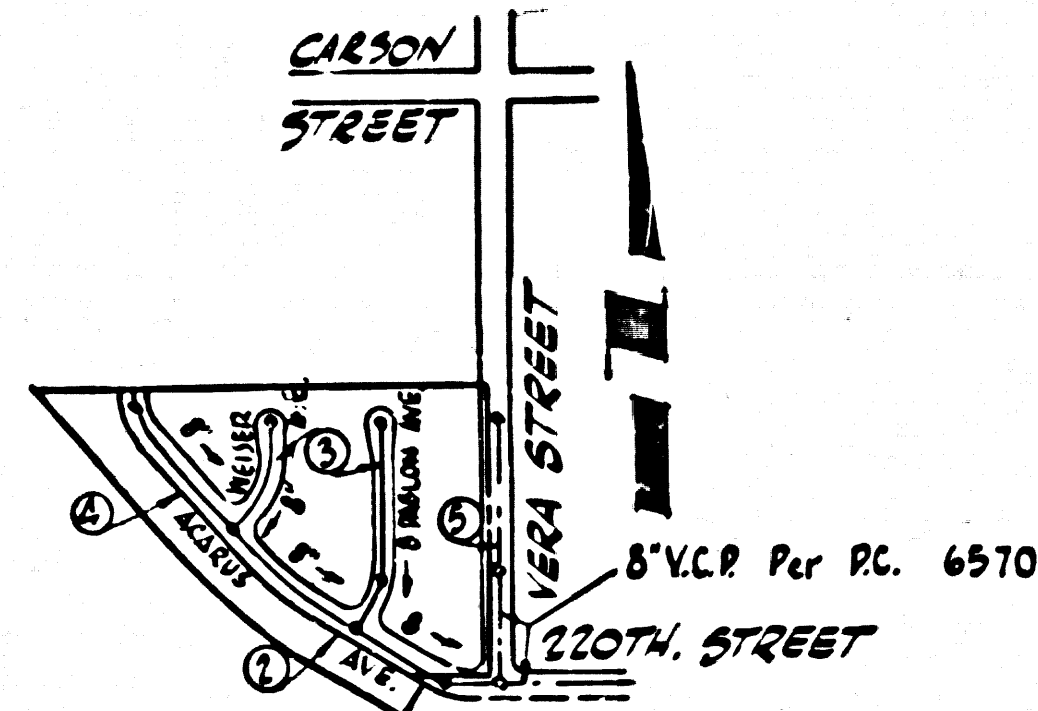
LOMITA BLDG. DIST. NO. 12

PROFILE ALIGNMENT AND GRADE OF  
**SANITARY SEWERS** P.C. 6649  
 TO BE CONSTRUCTED IN PAGE 1

TRACT NO. 28148  
 PRIVATE CONTRACT NO. 6649

W.S. 28  
 3 SHEETS, 5 PAGES  
 SCALE: VERT. 1" = 4' HORIZ. 1" = 40' JULY, 1963  
 PREPARED IN THE OFFICES OF  
**LANCO ENGINEERING**  
 by Clad M. Leonard  
 REG. C. E. NO. 12167  
 FOR LEGEND SEE PLAN NO. S-64

34241



INDEX MAP  
 TRACT NO. 28148  
 SCALE 1" = 600'

NOTE: ISSUE NO HOUSE CONNECTION PERMITS  
 UNTIL P.C. 6570 IS ACCEPTED

**REVISIONS**  
 Δ REMOVED 2 WYES, ADDED  
 H. L.S. & CHANGE LOT 58 DIMENSIONS  
 H. L.S. 12-18-63  
 C.M. Leonard  
 R.C.E. 13167  
 APPROVED Ralph Schafar

**NOTICE TO CONTRACTOR**  
 THE EXISTENCE AND LOCATION OF ANY UNDERGROUND UTILITY PIPES OR  
 STRUCTURES SHOWN ON THESE PLANS ARE OBTAINED BY A SEARCH OF THE AVAILABLE  
 RECORDS TO THE BEST OF MY KNOWLEDGE THERE ARE NO EXISTING UTILITIES EXCEPT AS  
 SHOWN ON THESE PLANS.  
 THE CONTRACTOR IS REQUIRED TO TAKE DUE PRECAUTIONARY MEASURES TO PROTECT  
 THE UTILITY LINES SHOWN AND ANY OTHER LINES NOT OF RECORD OR NOT SHOWN  
 ON THESE PLANS.  
Clad M. Leonard  
 CLACK M. LEONARD R.C.E. 13167

NOTE  
 CONTRACTOR TO OBTAIN STATIONS FOR EXIST Y'S  
 FOR LOTS 1-8 ON VERA ST. FROM COUNTY ENGINEER  
 OFFICE, 1823 W. LOMITA BLVD. LOMITA

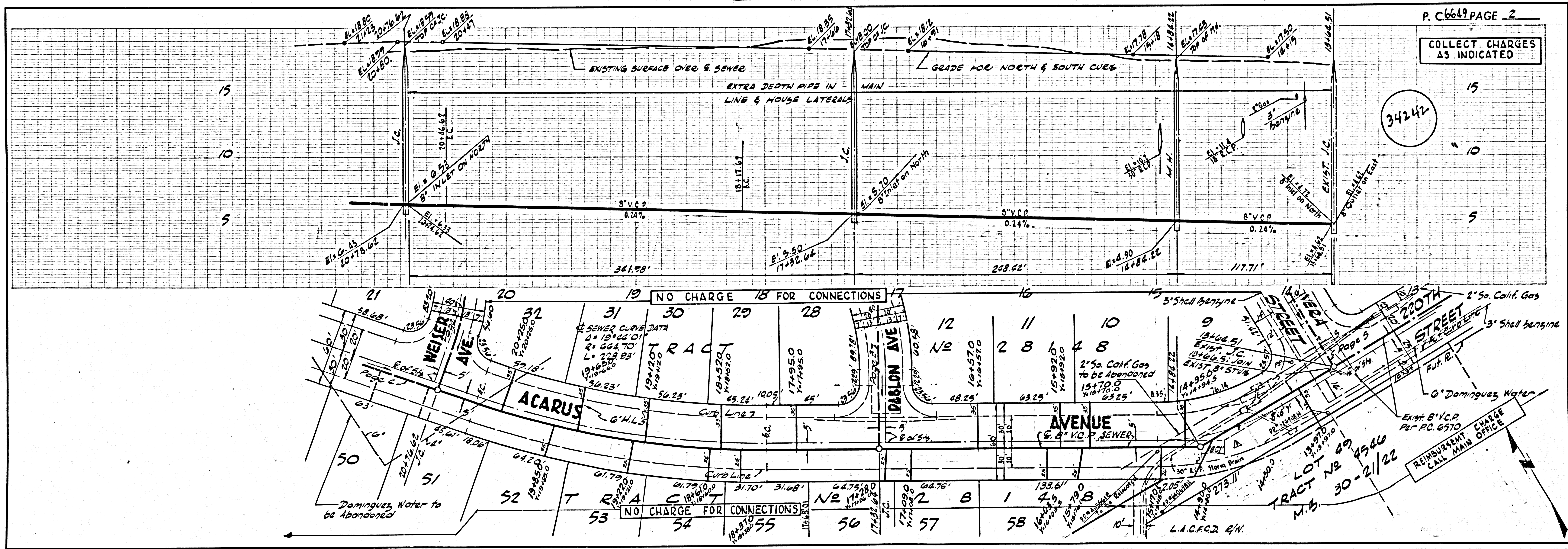
**COLLECT CHARGES  
 AS INDICATED**  
A. Curtis 7-19-63

NO CONNECTIONS FOR THE DISPOSAL OF  
 INDUSTRIAL WASTES SHALL BE MADE TO  
 SEWERS SHOWN ON THESE DRAWINGS  
 WITHOUT WRITTEN PERMISSION FROM THE  
 CHIEF ENGINEER AND GENERAL MANAGER  
 OF THE COUNTY SANITATION DISTRICTS.

NOTE  
 GRADES TO WHICH THIS IMPROVEMENT IS TO BE CONSTRUCTED ARE SHOWN ON PLANS AND PROFILES. GRADE POINTS FOR TOP OF  
 CURBS, CENTER LINE OF STREETS OR CENTER LINE OF ALLEYS ARE SHOWN BY CIRCLES ON PROFILES. AT ALL POINTS BETWEEN DESIGNATED  
 POINTS THE GRADE SHALL BE ESTABLISHED SO AS TO CONFORM TO A STRAIGHT LINE DRAWN BETWEEN SAID DESIGNATED POINTS.  
 ELEVATIONS ARE IN FEET ABOVE U.S.C. & G.S. SEA LEVEL DATUM OF 1929.  
 THIS DRAWING AND THE DATA HEREON ARE HEREBY MADE A PART OF THE SPECIFICATIONS.  
 WORK SHALL BE CONSTRUCTED ACCORDING TO STANDARD SPECIFICATIONS DATED 12/17/63, ON FILE IN THE OFFICE OF THE  
 COUNTY ENGINEER AND SHALL BE PROTECTED ONLY IN THE PRESENCE OF THE COUNTY ENGINEER.  
 BEFORE WORK CAN BE STARTED, THE CONTRACTOR MUST OBTAIN A PERMIT TO EXCAVATE IN COUNTY STREETS FROM THE L.A. COUNTY  
 ROAD DEPT., DISTRICT OFFICE NO. 3, AND PAY A FEE TO THE COUNTY ENGINEER, ROOM 300, COUNTY ENGINEERING BUILDING,  
 108 WEST SECOND STREET OR ALLOS VERDES CENTINELA VALLEY REGIONAL OFFICE, SUFFICIENT TO COVER THE COST OF  
 CONSTRUCTION INSPECTION AND RECORD PLANS.  
 APPROVAL OF THIS PLAN BY THE COUNTY OF LOS ANGELES DOES NOT CONSTITUTE A REPRESENTATION AS TO THE ACCURACY OF THE  
 LOCATION OF OR THE EXISTENCE OR NON-EXISTENCE OF ANY UNDERGROUND UTILITY PIPE, OR STRUCTURE WITHIN THE LIMITS OF THIS  
 PROJECT. THIS NOTE APPLIES TO ALL PAGES.  
 IF WORK IS TO BE DONE IN A STATE HIGHWAY, A PERMIT MUST BE OBTAINED FROM THE STATE OF CALIFORNIA, DIVISION OF HIGHWAYS,  
 720 SOUTH BRIDGE STREET, LOS ANGELES, CALIFORNIA.

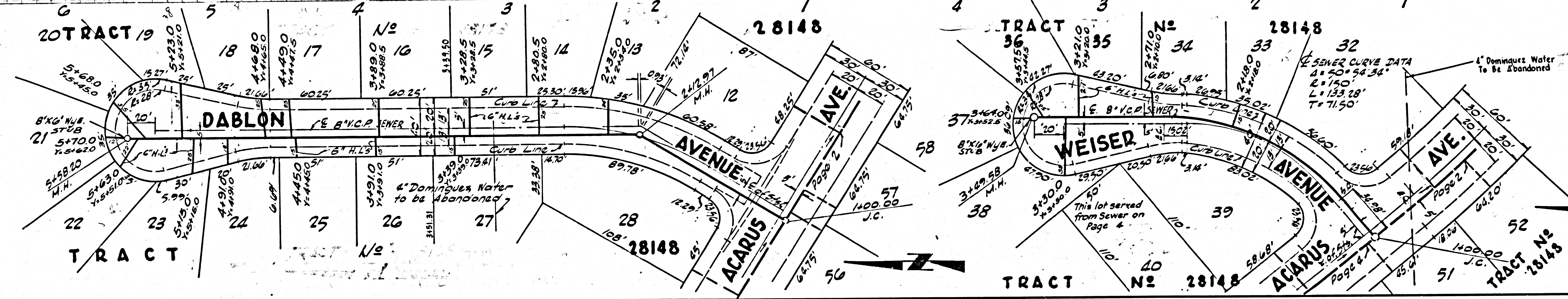
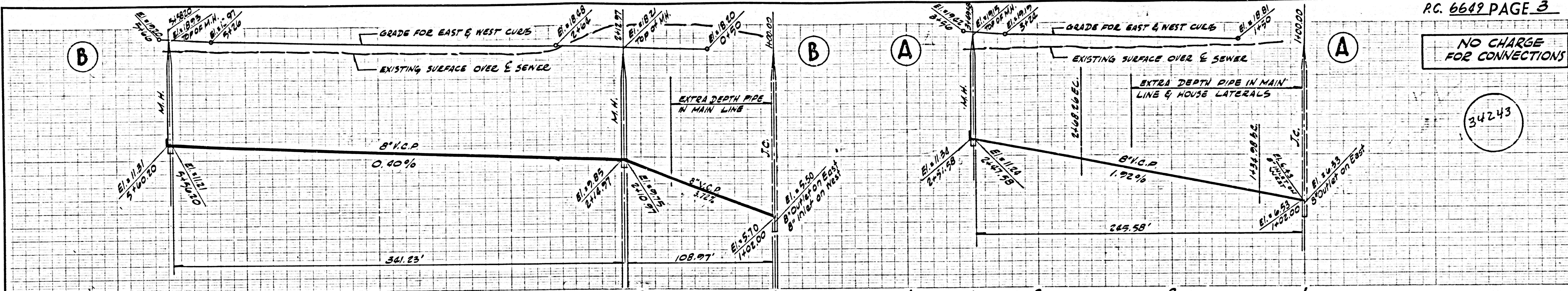
COUNTY OF LOS ANGELES, CALIFORNIA  
 JOHN A. LAMBIE, COUNTY ENGINEER J. D. PARKHURST, CHIEF ENGINEER  
 CO. SAN. DIST. NO. 8  
 APPROVED BY Ralph Schafar ASSISTANT SANITATION ENGINEER OFFICE ENGINEER  
 SUBMITTED BY Ralph Schafar FOR THE REGIONAL ENGINEER  
 CHECKED BY Sk. White 11-12-63 REG. C.E. NO. 2412

J.N. 0360.95



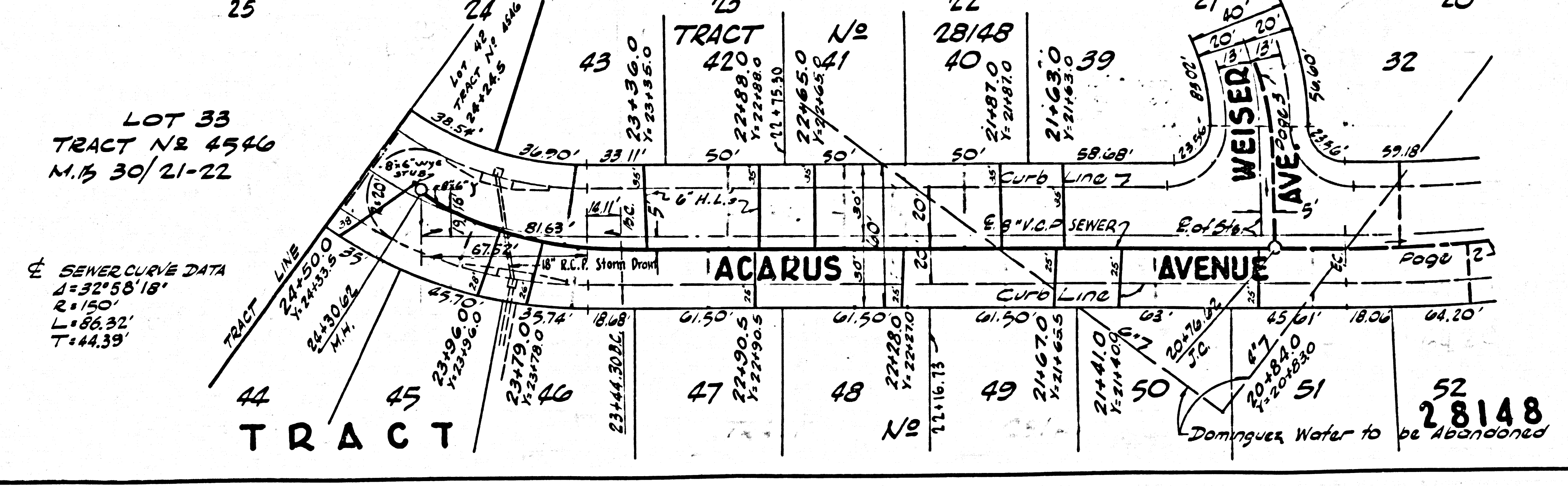
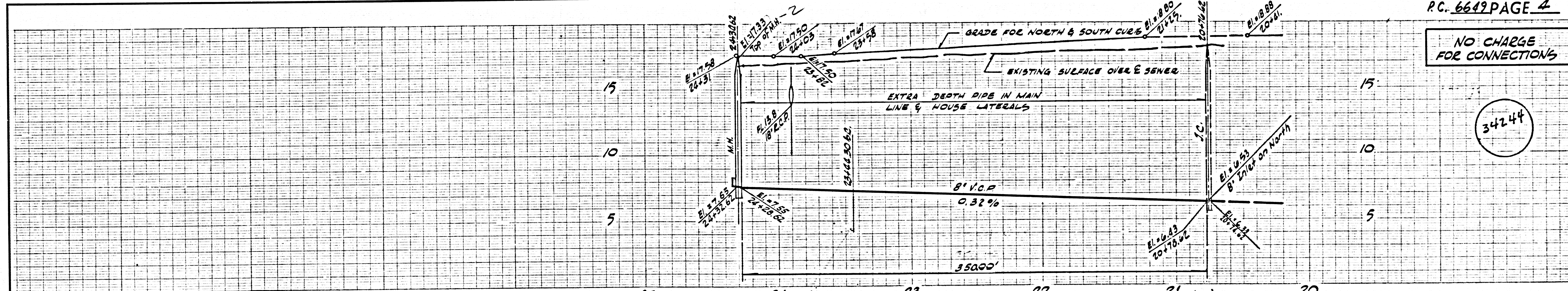
NO CHARGE FOR CONNECTIONS

34243



NO CHARGE FOR CONNECTIONS

34244

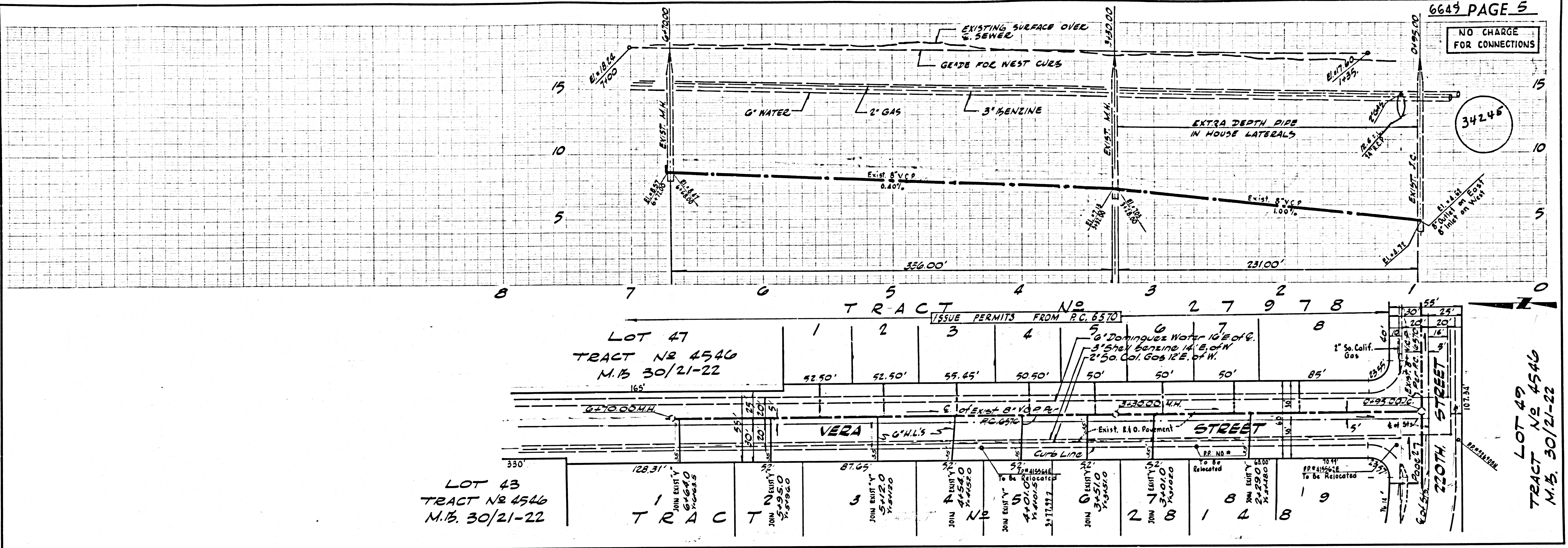


LOT 33  
TRACT No 4546  
M. 15 30/21-22

SEWER CURVE DATA  
Δ = 32° 58' 18"  
R = 150'  
L = 188.32'  
T = 144.39'

NO CHARGE FOR CONNECTIONS

34245



LOT 43  
TRACT NO 4546  
M.B. 30/21-22

LOT 47  
TRACT NO 4546  
M.B. 30/21-22

LOT 49  
TRACT NO 4546  
M.B. 30/21-22