

LANCASTER BLDG. DIST. NO. 3

PROFILE ALIGNMENT AND GRADE OF P.C. 6660
SANITARY SEWERS PAGE 1

TO BE CONSTRUCTED IN
TRACT No 28180

PRIVATE CONTRACT NO. 6660

W.S. 70

2 SHEETS, 4 PAGES

SCALE: VERT. 1"=4' HORIZ. 1"=40' APRIL, 1963

PREPARED IN THE OFFICES OF
PARAMOUNT ENGINEERING CO.

FOR LEGEND SEE PLAN NO. S-A-64

NOTE: GRADES TO WHICH THIS IMPROVEMENT IS TO BE CONSTRUCTED ARE SHOWN ON PLANS AND PROFILES. GRADE POINTS FOR TOP OF CURB, CENTER LINE OF STREETS, OR CENTER LINE OF ALLEYS ARE SHOWN BY CIRCLES ON PROFILES. AT ALL POINTS BETWEEN DESIGNATED POINTS THE GRADE SHALL BE ESTABLISHED SO AS TO CONFORM TO A STRAIGHT LINE DRAWN BETWEEN SAID DESIGNATED POINTS.
ELEVATIONS ARE IN FEET ABOVE U.S.C. & G.S. MEAN SEA LEVEL DATUM OF 1929.
THIS DRAWING AND THE DATA HEREON ARE HEREBY MADE A PART OF THE SPECIFICATIONS AND SHALL BE PROSECUTED ONLY IN THE PRESENCE OF THE COUNTY ENGINEER (STANDARD SPECIFICATIONS DATED MAY 25, 1962) BEFORE WORK CAN BE STARTED. THE CONTRACTOR MUST OBTAIN A PERMIT TO EXCAVATE IN COUNTY STREETS FROM THE L.A. COUNTY ROAD DIST. DISTRICT OFFICE NO. 8, AND PAY A FEE TO THE COUNTY ENGINEER, ROOM 330 COUNTY ENGINEERING BUILDING, 120 SOUTH BRINK STREET, LOS ANGELES, CALIFORNIA.
APPROVAL OF THIS PLAN BY THE COUNTY OF LOS ANGELES DOES NOT CONSTITUTE A REPRESENTATION AS TO THE ACCURACY OF THE LOCATION OF OR THE EXISTENCE OR NON-EXISTENCE OF ANY UNDERGROUND UTILITY PIPE, OR STRUCTURE WITHIN THE LIMITS OF THIS PROJECT. THIS NOTE APPLIES TO ALL PAGES.
IF WORK IS TO BE DONE IN A STATE HIGHWAY, A PERMIT MUST BE OBTAINED FROM THE STATE OF CALIFORNIA, DIVISION OF HIGHWAYS, 120 SOUTH BRINK STREET, LOS ANGELES, CALIFORNIA.

COUNTY OF LOS ANGELES, CALIFORNIA

JOHN A. LAMBIE, COUNTY ENGINEER
J.D. PARKHURST, CHIEF ENGINEER
CO. SAN. DIST. NO. 14

APPROVED BY James J. Lambie ASSISTANT SANITATION ENGINEER
SUBMITTED BY John J. Lambie REGIONAL ENGINEER
CHECKED BY John J. Lambie REGIONAL ENGINEER

REVISION APPROVED John J. Lambie 11/22/63
OFFICE OF THE COUNTY ENGINEER
ROAD AND SEWER GRADES REVISED, PAGES 2, 3 & 4.

J.N. 0361.05

BENCH MARK
S.C. 63 - C.E.B. S.E. Cor. of Box
on 8" 22" S.P. Pipe 3' 33" N. of & EAST
of CURB 3' 4" 35" W. of 10th STREET
EAST.
LANCASTER QUAD, 1957 C.R.G.S.
PRELIM. ADJ. 2399.475

NOTE: Subtract 0.34 from all Elevations
Shown to conform to Adj. B.M. Elevations

NO CHARGE FOR CONNECTIONS
John J. Lambie 11/22/63

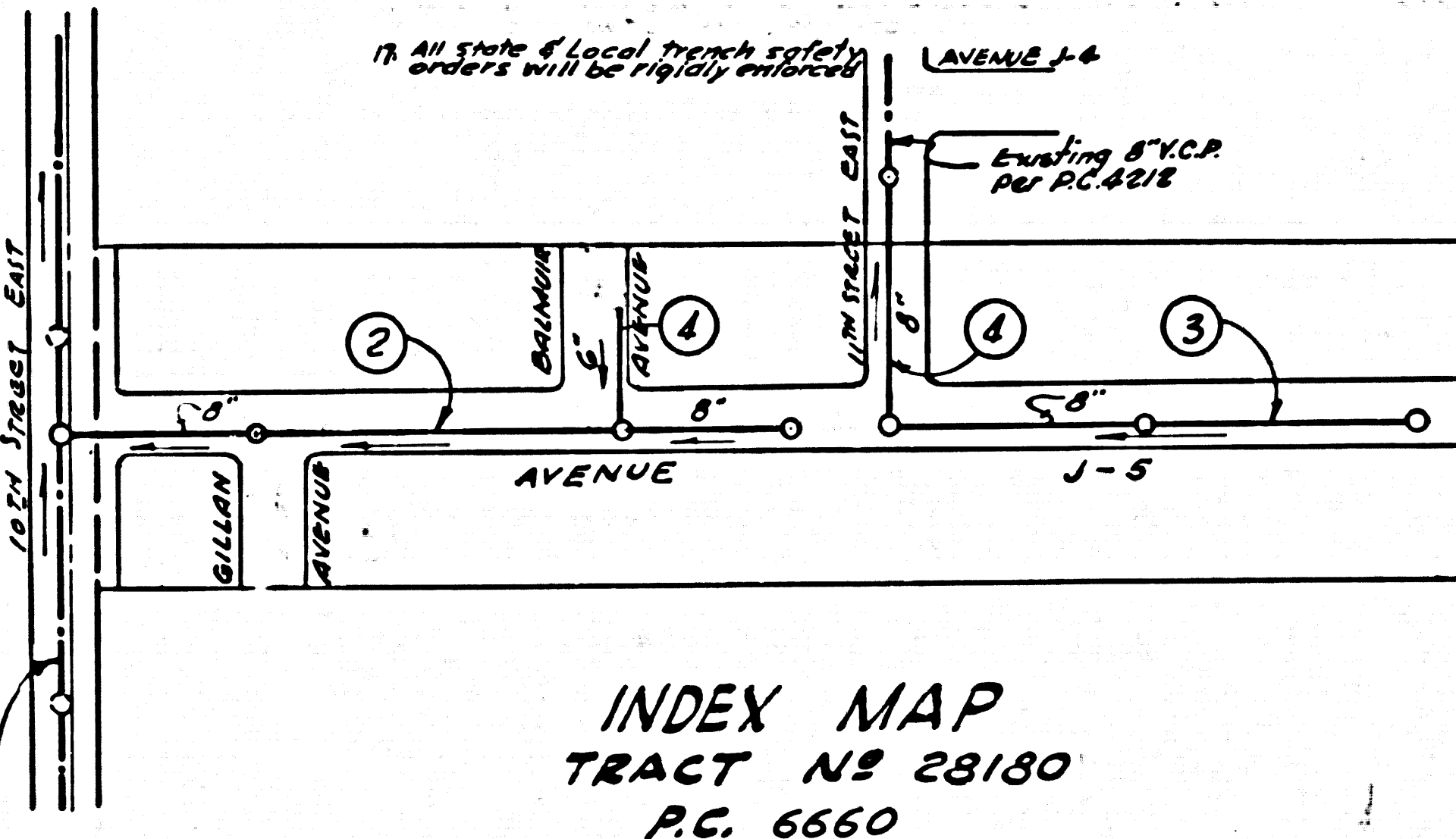
REVISION APPROVED John J. Lambie 7/12/64
OFFICE OF THE COUNTY ENGINEER

CURB ELEVATIONS REVISED. PAGES 2, 3, & 4

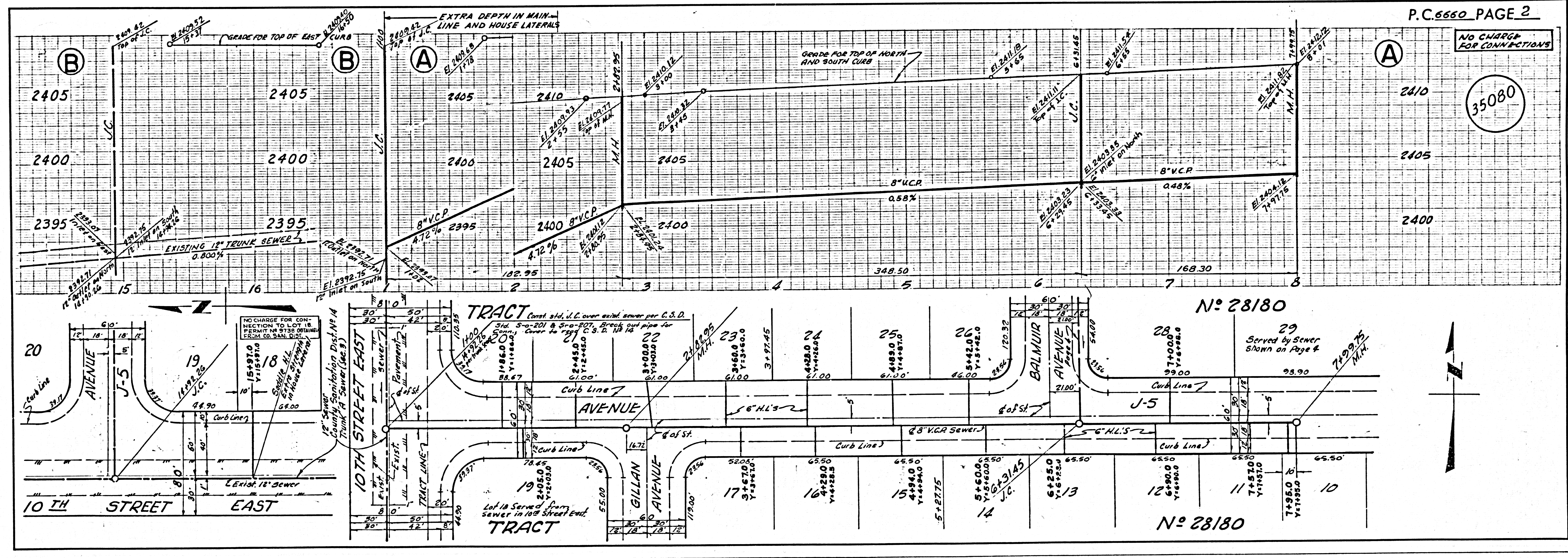
NO CONNECTIONS FOR THE DISPOSAL OF INDUSTRIAL WASTES SHALL BE MADE TO SEWERS SHOWN ON THESE DRAWINGS WITHOUT WRITTEN PERMISSION FROM THE CHIEF ENGINEER AND GENERAL MANAGER OF THE COUNTY SANITATION DISTRICTS.

BEFORE BREAKING INTO ANY EXISTING STRUCTURE AND BEFORE FINAL ACCEPTANCE OF THIS WORK, COUNTY SANITATION DISTRICT (DU 4-1281) SHALL BE NOTIFIED IN ORDER THAT REQUIRED INSPECTION CAN BE MADE.

12" Sewer County Sanitation Dist. No. 14. Make Trunk in Sewer (Sec. 3)



NOTE: Numbers in Circles indicate page numbers



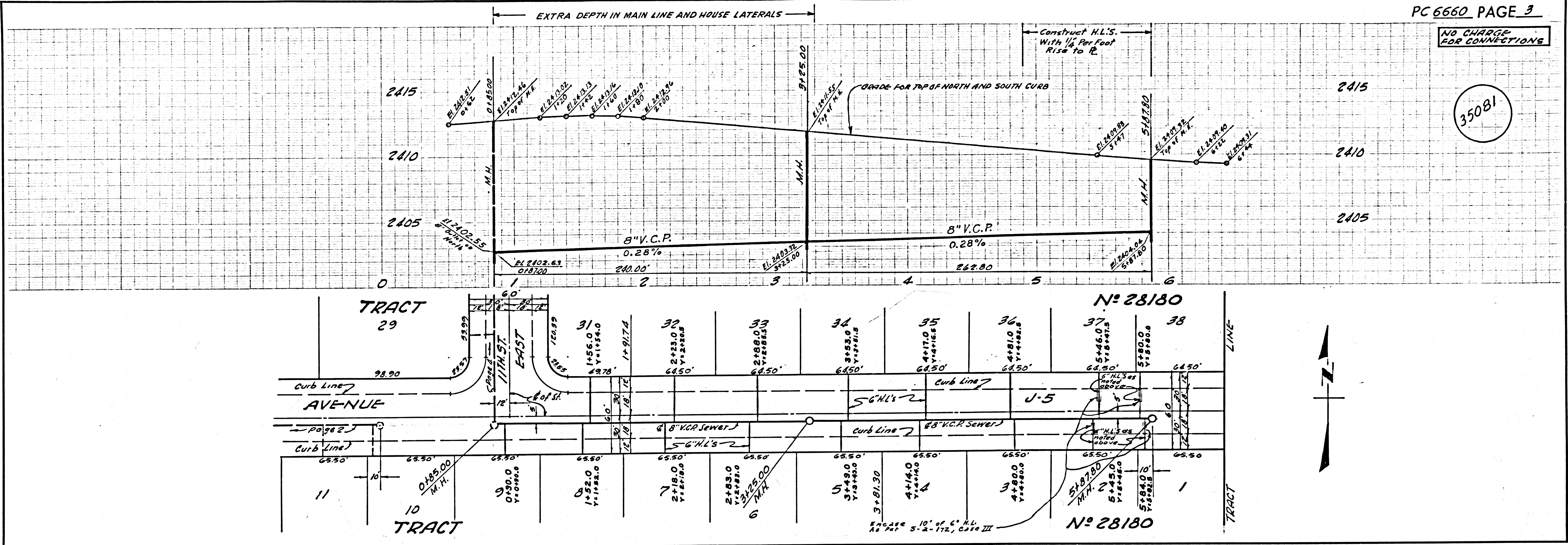
P.C. 6660 PAGE 2

NO CHARGE FOR CONNECTIONS

35080

NO CHARGE FOR CONNECTIONS

35081



NO CHARGE FOR CONNECTIONS

35082

