

B.M. S.G. 1372. ELEV. 426.910  
 Ed. C.S. Map, in well with cover, at the  
 C/O. Int. of Amor Rd. & Pass and Covina  
 Rd. Stamped C.S. Non. R.E. 2177  
 BASE LINE QUAD. 1955

LA PUENTE BLDG. DIST. NO. 2

PROFILE ALIGNMENT AND GRADE OF  
 SANITARY SEWERS PAGE 1  
 TO BE CONSTRUCTED IN  
 TRACT No 20147

PRIVATE CONTRACT NO. 6662

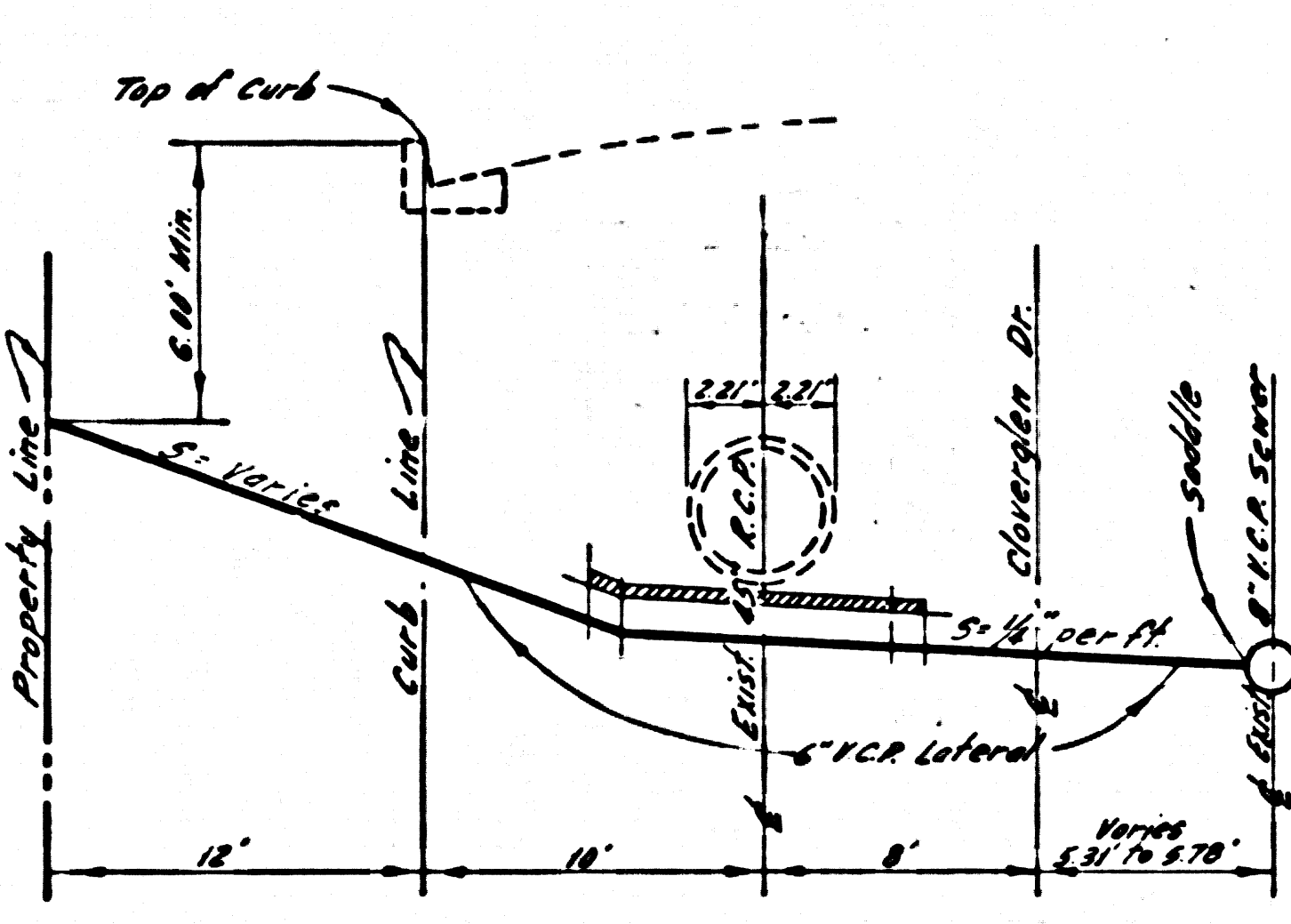
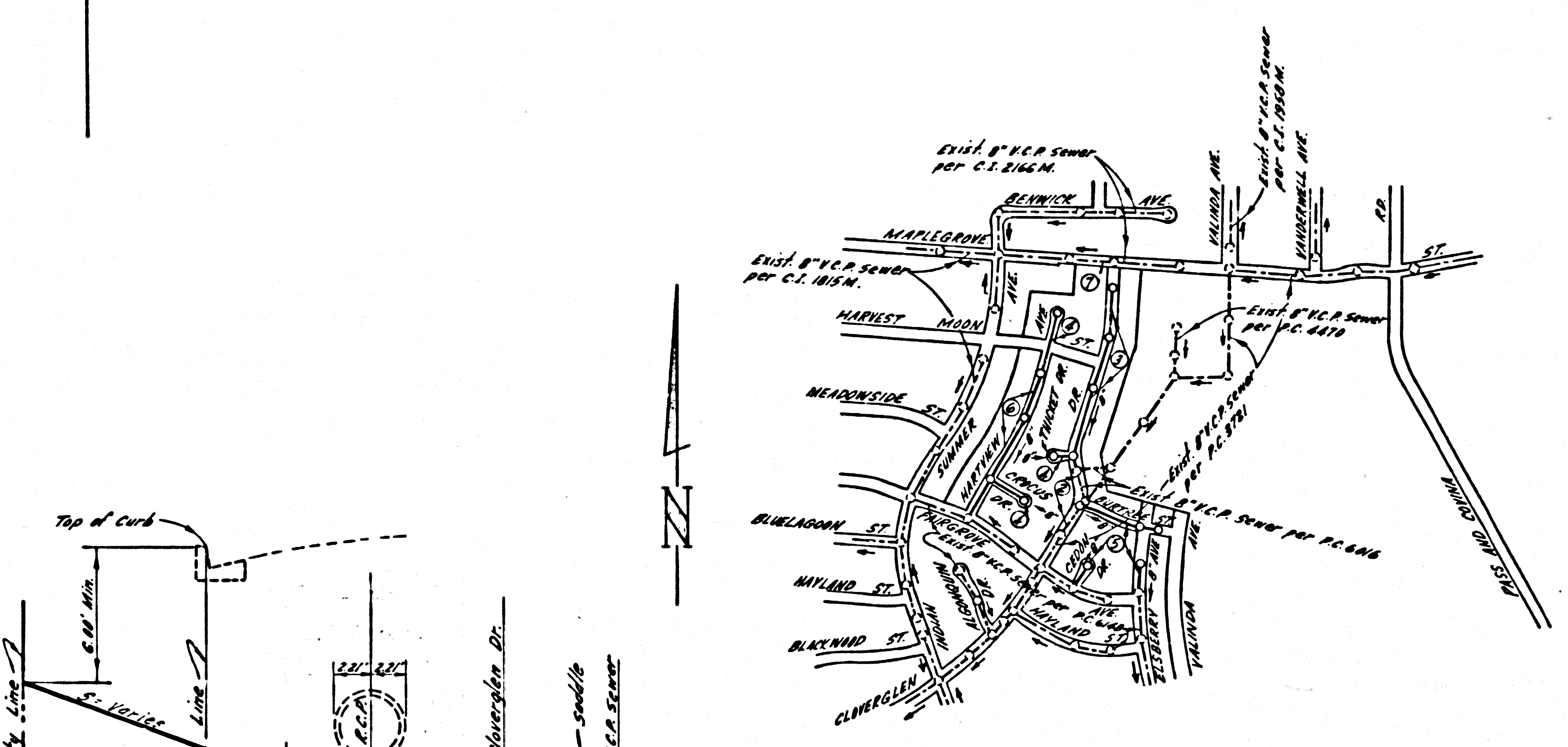
W.S. 39  
 4 SHEETS, 7 PAGES  
 SCALE: VERT. 1"=4'  
 HORIZ. 1"=40'  
 JULY, 1963  
 PREPARED IN THE OFFICES OF  
 ADAMS & ELLS  
 CIVIL ENGINEERS  
 REG. C. E. NO. 10880  
 FOR LEGEND SEE PLAN NO. S-64

34166

NOTES:  
 1. PROVIDE STAKES ON THE PROPERTY LINE OR PROPERTY LINES PRODUCED AT RIGHT ANGLES TO THE SEWER LINE AT THE CENTER LINE OF EACH MANHOLE.  
 2. NO REPRESENTATIVE OF THE COUNTY ENGINEER WILL SURVEY OR LAY OUT ANY PORTION OF THE WORK.  
 3. THE PRIVATE ENGINEER SHALL FURNISH THE COUNTY ENGINEER WITH GRADE SHEETS AND STATIONING FOR ALL HOUSE LATERALS AND Y BRANCHES AND SHALL PROVIDE STAKES FOR THEM AT THEIR PROPER LOCATIONS WITH TYPING PLAINLY MARKED. ALL HOUSE LATERALS SHALL BE CONSTRUCTED IN A STRAIGHT ALIGNMENT AT RIGHT ANGLES FROM THE MAIN LINE SEWER EXCEPT AS SHOWN ON THE PLANS. HOUSE LATERALS FROM CHIMNEYS SHALL NOT HAVE AN ANGLE OF LESS THAN 45° WITH THE MAIN LINE SEWER. ANY CHANGE IN ALIGNMENT SHALL BE REQUESTED BY WRITING BY THE PRIVATE ENGINEER.  
 4. THE PRIVATE ENGINEER SHALL RUN THE HOUSE LATERAL DEPTH AT THE PROPERTY LINE BELOW THE TOP OF CURB ELEVATION FOR EACH HOUSE LATERAL ON THE GRADE SHEET.  
 5. NO REVISIONS SHALL BE MADE IN THESE PLANS WITHOUT THE APPROVAL OF THE COUNTY ENGINEER.  
 6. THE CONTRACTOR SHALL NOTIFY THE CONSTRUCTION DIVISION BY TELEPHONE, MADISON 9-4747, EXT. 8155, AT LEAST TWENTY-FOUR HOURS BEFORE STARTING ANY WORK UNDER THIS CONTRACT.  
 7. MANHOLES SHALL BE BRICK SEWER STRUCTURES PER S-4-104. PRECAST CONCRETE MANHOLES PER S-4-173 OR S-4-173 MAY BE USED AS AN ALTERNATE IN LOCATIONS APPROVED BY THE COUNTY ENGINEER.  
 8. USE STANDARD MANHOLE FRAMES AND COVERS, S-4-107.  
 9. MANHOLE TOPS IN UNIMPROVED RIGHTS-OF-WAY TO BE SIX INCHES ABOVE FINISHED GRADE.  
 10. USE EXTRA STRENGTH PIPE, ALL PIPE IS STANDARD BIRTH.  
 11. USE CHIMNEY MOTOR OR MECHANICAL COMPRESSION JOINTS FOR ALL V.C.P. JOINTS PER SPECS. SECS. 34 & 48, EXCEPT AS NOTED.  
 12. WHERE EVER GROUND WATER IS ENCOUNTERED DURING THE CONSTRUCTION OF THE SEWERS, THE V.C.P. JOINTS SHALL BE OF JOINT COMPOUND PER SPECS. SECS. 33 & 48, OR MECHANICAL COMPRESSION JOINTS PER SPECS. SEC. 34.  
 13. IF A POWER POLE IS WITHIN THREE FEET OF THE SEWER, THE SEWER SHALL BE ENCASED, PER S-4-172, CASE III, TWO FEET ON EITHER SIDE FROM THE POINT OF INTERFERENCE.  
 14. IF DURING THE COURSE OF CONSTRUCTION IT IS DETERMINED THAT THERE IS LESS THAN FOUR FEET OF COVER OVER THE TOP OF A MAIN LINE OR HOUSE LATERAL V.C.P. SEWER WHICH IS NOT INDICATED ON THE PLANS, THE PIPE SHALL BE ENCASED PER S-4-172, CASE III, UNLESS OTHERWISE APPROVED BY THE COUNTY ENGINEER.  
 15. HOUSE LATERALS TO BE CONSTRUCTED WITH INVERTS AT PROPERTY LINE... 6... FEET BELOW CURB GRADE EXCEPT AS NOTED.  
 16. RESURFACE ALL TRENCHES WITHIN PAVED AREAS TO MEET L.A. COUNTY ROAD DEPT. OR CALIFORNIA STATE HIGHWAY REQUIREMENTS IN ACCORDANCE WITH PERMITS.  
 17. FOR ALLOWABLE LEAKAGE TEST USE FORMULA NO. 1, 2, 3, 4, 5, 6, 7, 8, 9, 10, 11, 12, 13, 14, 15, 16, 17, 18, 19, 20, 21, 22, 23, 24, 25, 26, 27, 28, 29, 30, 31, 32, 33, 34, 35, 36, 37, 38, 39, 40, 41, 42, 43, 44, 45, 46, 47, 48, 49, 50, 51, 52, 53, 54, 55, 56, 57, 58, 59, 60, 61, 62, 63, 64, 65, 66, 67, 68, 69, 70, 71, 72, 73, 74, 75, 76, 77, 78, 79, 80, 81, 82, 83, 84, 85, 86, 87, 88, 89, 90, 91, 92, 93, 94, 95, 96, 97, 98, 99, 100, 101, 102, 103, 104, 105, 106, 107, 108, 109, 110, 111 ARE SERVED BY P.C. 6148.  
 20. USE MECHANICAL COMPRESSION JOINTS FOR ALL V.C.P. HOUSE LATERALS PER SPECS., SECS. 36 AND 49.

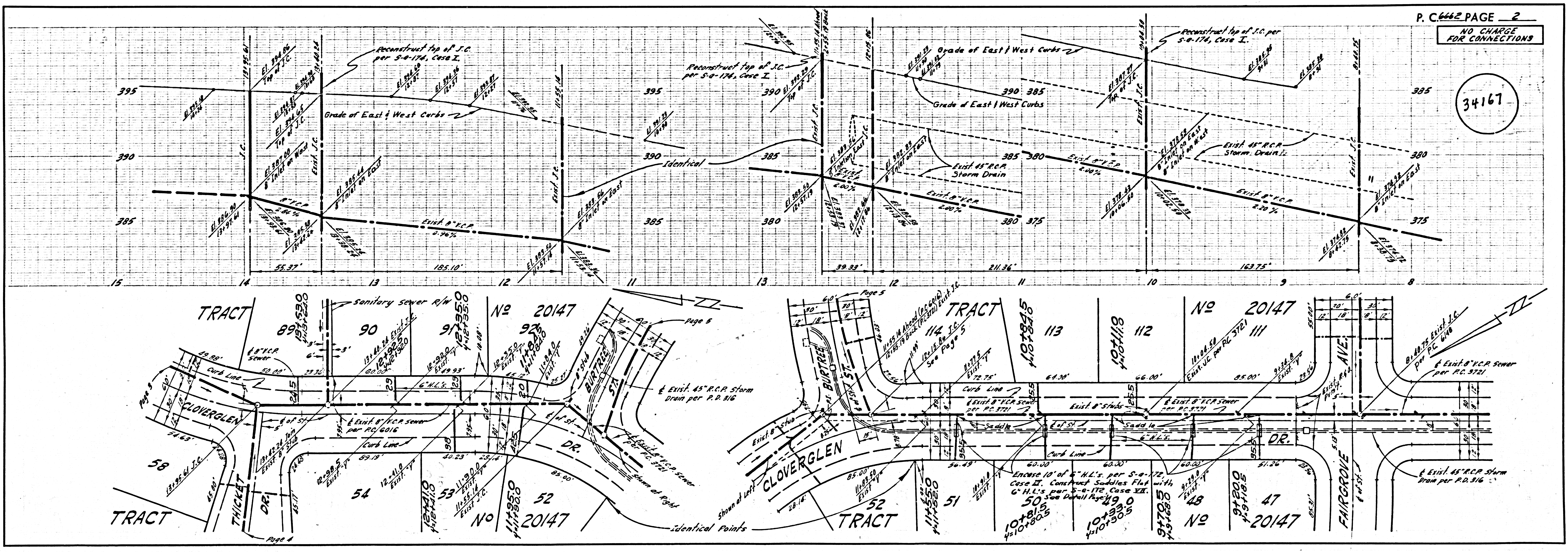
COUNTY OF LOS ANGELES, CALIFORNIA  
 JOHN A. LAMBIE, COUNTY ENGINEER  
 J. D. PARKHURST, CHIEF ENGINEER  
 CO. SAN. DIST. NO. 14  
 APPROVED BY: [Signature] ASSISTANT SANITATION ENGINEER  
 APPROVED BY: [Signature] OFFICE ENGINEER  
 SUBMITTED BY: [Signature] SAN. DIVISION REGIONAL ENGINEER  
 CHECKED BY: [Signature] REG. C.E. NO. 2445

J.N. 036106



ISSUE NO HOUSE CONNECTION PERMITS UNTIL P.C. 6148 IS ACCEPTED

NO CHARGE FOR CONNECTIONS  
 [Signature]

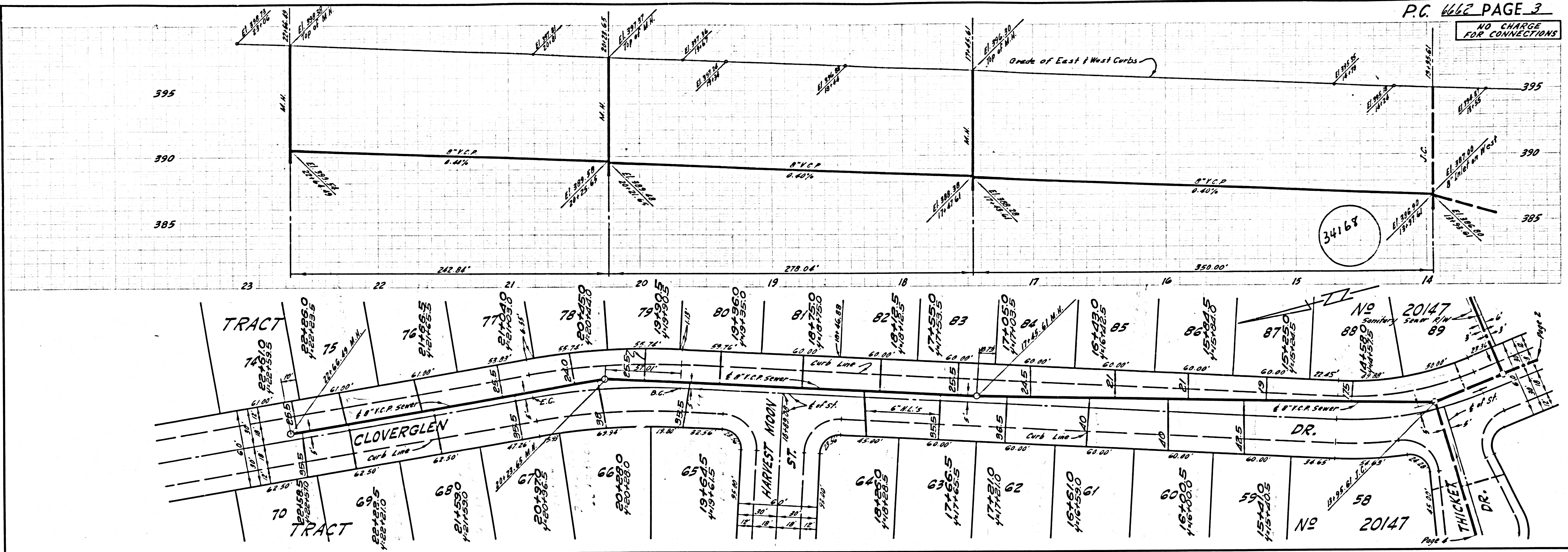


P.C. 6662 PAGE 2  
 NO CHARGE FOR CONNECTIONS

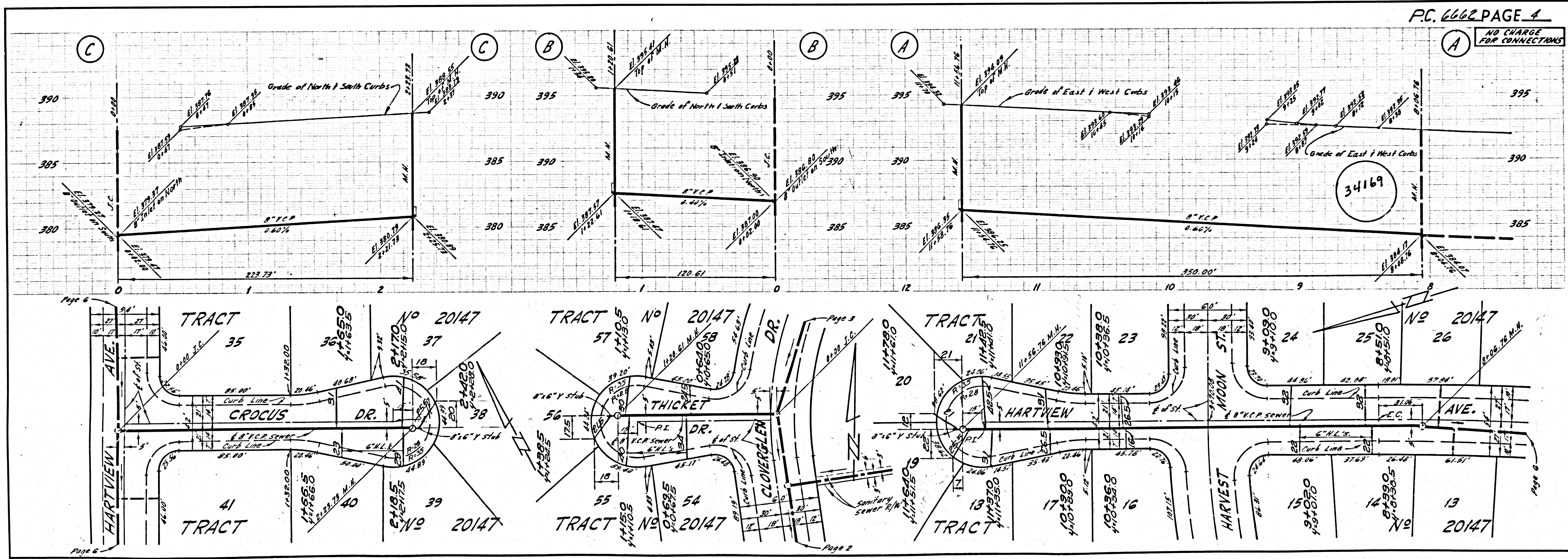
34167



NO CHARGE FOR CONNECTIONS

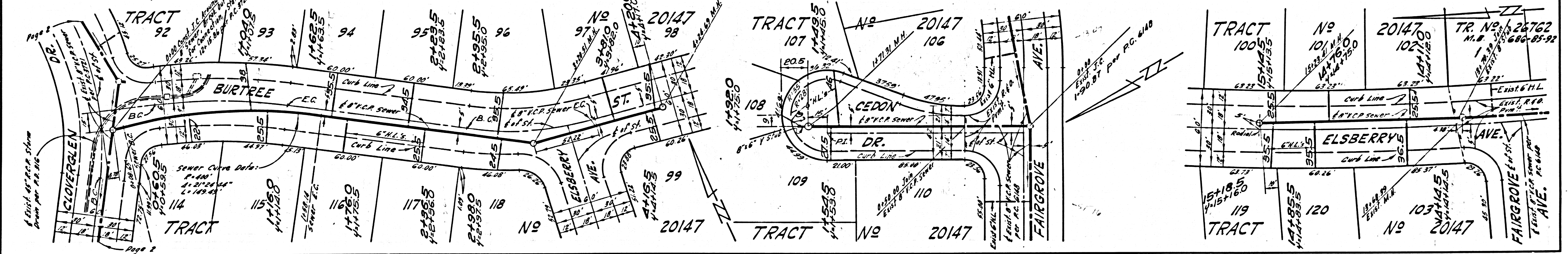
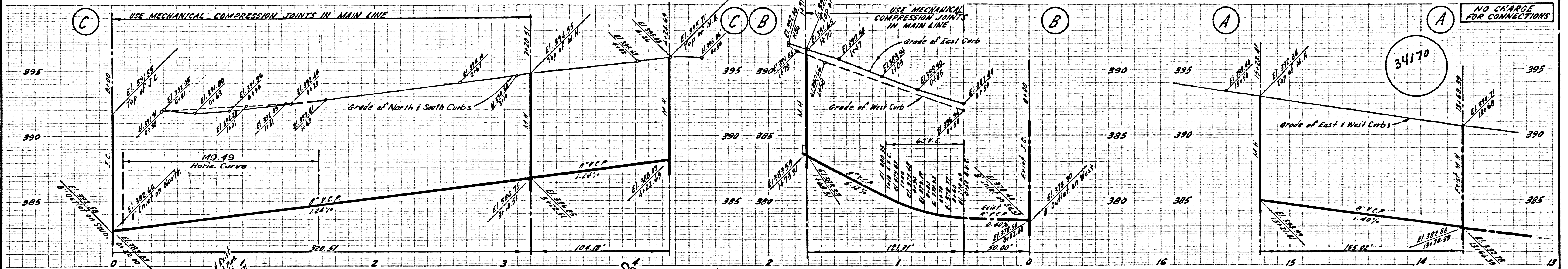


NO CHARGE FOR CONNECTIONS

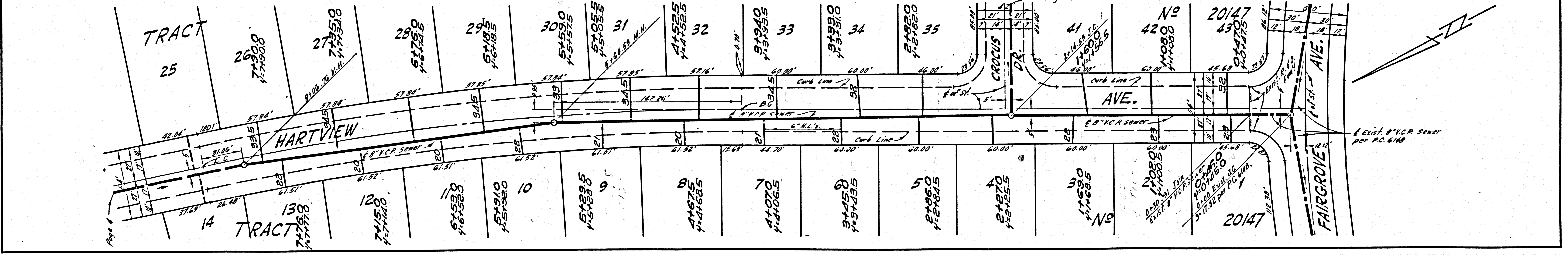
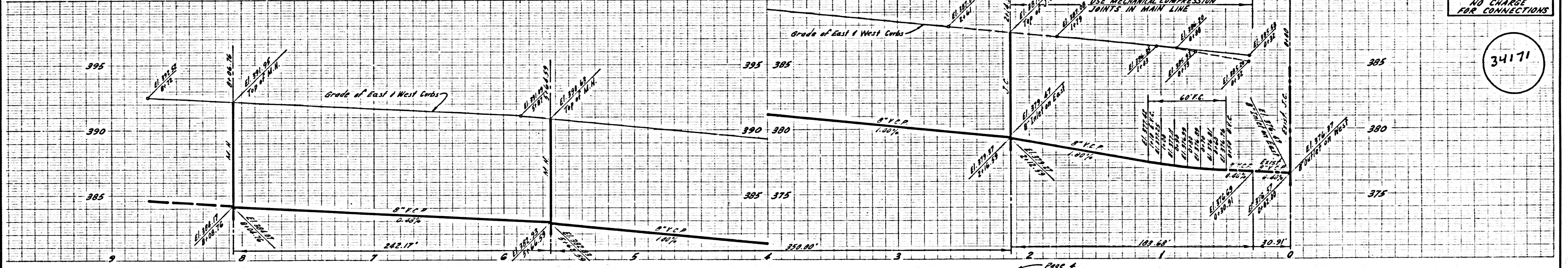




NO CHARGE FOR CONNECTIONS



NO CHARGE FOR CONNECTIONS





NO CHARGE FOR CONNECTIONS

34172

