

SAN DIMAS BLDG. DIST. NO. 10

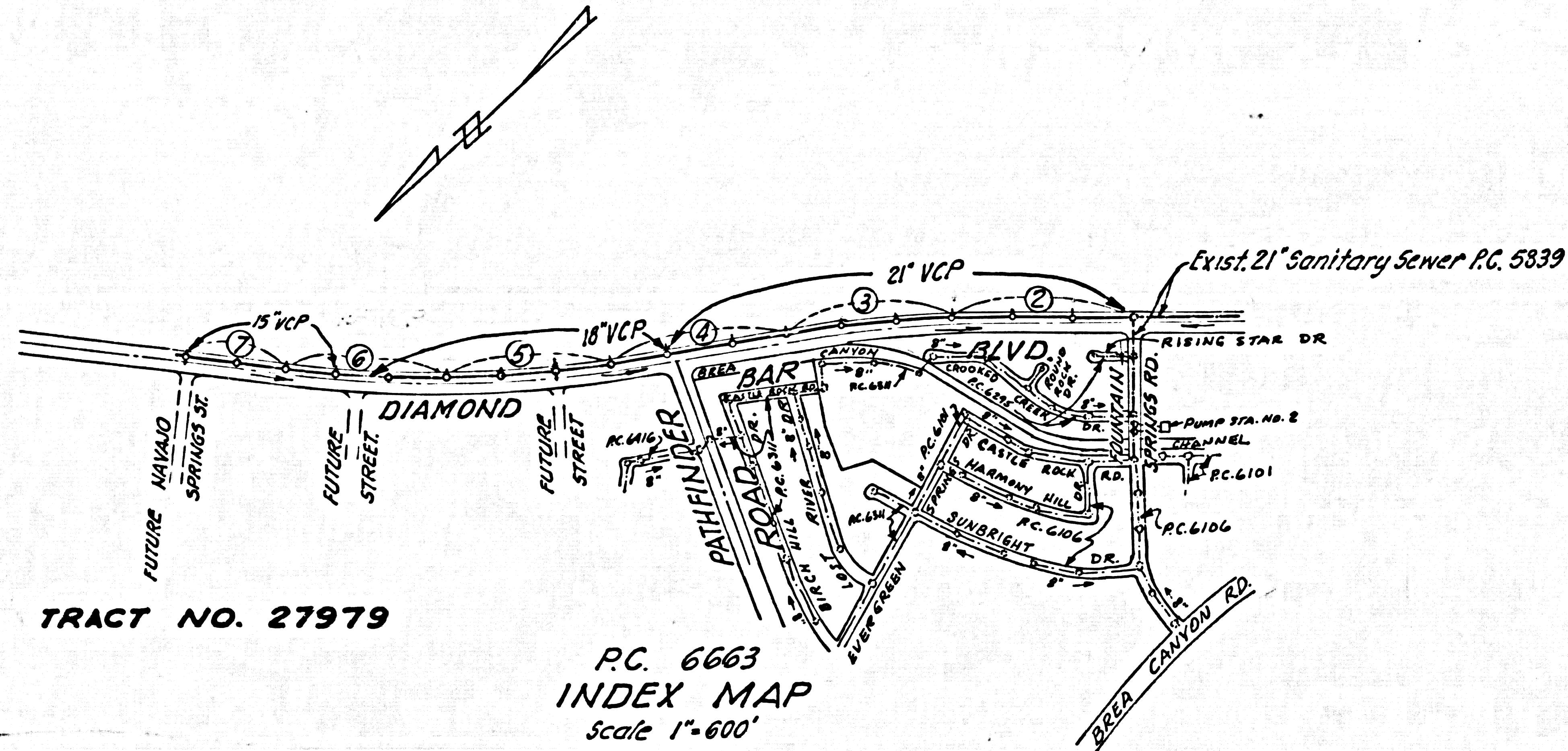
PROFILE ALIGNMENT AND GRADE OF
SANITARY SEWERS P.C. 6663
 TO BE CONSTRUCTED IN PAGE 1
 DIAMOND BAR BOULEVARD J.N. 0361.07

PRIVATE CONTRACT NO. 6663

W.S. 39
 4 SHEETS; 7 PAGES
 SCALE: VERT. 1"=4' JULY, 1963
 HORIZ. 1"=40'
 PREPARED IN THE OFFICES OF
 QUINTON ENGINEERS LTD
 LOS ANGELES, CALIFORNIA
 By: *Martin Miller*
 REG. C. E. NO. 13907

34906

FOR LEGEND SEE PLAN NO. S-A-64



TRACT NO. 27979

P.C. 6663
 INDEX MAP
 Scale 1"=600'

BENCH MARK No. 56 2100
 R.D.B.M. Tag in concrete headwall near intersection
 Diamond Bar Blvd. & Pathfinder Rd. ± 224' Nly & ± 60'
 Ely C/L intersection
 Otterbein 1955 Elev. 772.294

BASIS OF BEARINGS.
 The bearings for Diamond Bar Blvd. as shown
 on F.M. no. 20106 were used as basis of
 bearing for this project

- NOTES:
1. PROVIDE STAKES ON THE PROPERTY LINE OR PROPERTY LINES PRODUCED AT RIGHT ANGLES TO THE SEWER LINE AT THE CENTER LINE OF EACH MANHOLE.
 2. NO REPRESENTATIVE OF THE COUNTY ENGINEER WILL SURVEY OR LAY OUT ANY PORTION OF THE WORK.
 3. THE CONTRACTOR SHALL BE RESPONSIBLE FOR THE PROTECTION OF ALL EXISTING UTILITIES AND STRUCTURES AND SHALL BE RESPONSIBLE FOR THE PROTECTION OF ALL EXISTING UTILITIES AND STRUCTURES AND SHALL BE RESPONSIBLE FOR THE PROTECTION OF ALL EXISTING UTILITIES AND STRUCTURES.
 4. THE CONTRACTOR SHALL BE RESPONSIBLE FOR THE PROTECTION OF ALL EXISTING UTILITIES AND STRUCTURES AND SHALL BE RESPONSIBLE FOR THE PROTECTION OF ALL EXISTING UTILITIES AND STRUCTURES.
 5. NO REVISIONS SHALL BE MADE IN THESE PLANS WITHOUT THE APPROVAL OF THE COUNTY ENGINEER.
 6. USE STANDARD MANHOLE FRAMES AND COVERS, S-117, UNLESS OTHERWISE SPECIFIED.
 7. USE EXTRA STRENGTH PIPE, UNLESS OTHERWISE SPECIFIED. ALL PIPE IS EXTRA DEPTH.
 8. USE MECHANICAL COMPRESSION JOINTS FOR ALL V.C.P. JOINTS PER SPEC. SECS. 16 & 40.
 9. RESURFACE ALL TRENCH WITHIN PAVED AREA TO MEET L.A. COUNTY ROAD DEPT. OR CALIF. STATE HIGHWAY REQUIREMENTS IN ACCORDANCE WITH PERMITS.
 10. ENCASE FOUR FEET OF SEWER AT POINTS OF INTERFERENCE WITH POLES, CASE III, S-172.
 11. PRECAST CONCRETE MANHOLES PER S-C-173 OR S-C-133 MAY BE USED AS AN ALTERNATE IN LOCATIONS APPROVED BY THE COUNTY ENGINEER.
 12. ALL MANHOLES SHALL BE BRICK SEWER STRUCTURES, S-104.
 13. FOR ALLOWABLE LEAKAGE TEST USE FORMULA NO. 2, SPEC. SEC. 84.
 14. MANHOLE TOPS IN UNIMPROVED RIGHTS-OF-WAY TO BE LEVEL WITH FINISHED GRADE.
 15. THE CONTRACTOR SHALL NOTIFY THE CONSTRUCTION DIVISION BY TELEPHONE, MADISON 9-470, EXT. 81551 AT LEAST TWENTY-FOUR HOURS BEFORE STARTING ANY WORK UNDER THIS CONTRACT.
 16. STANDARD SPECIFICATIONS FOR THE CONSTRUCTION OF SANITARY SEWERS, DATED MAY 23, 1962, APPLY IN THE CONSTRUCTION OF THE PROJECT.
 17. ALL STATE AND LOCAL TRENCH SAFETY ORDERS WILL BE RIGIDLY ENFORCED.

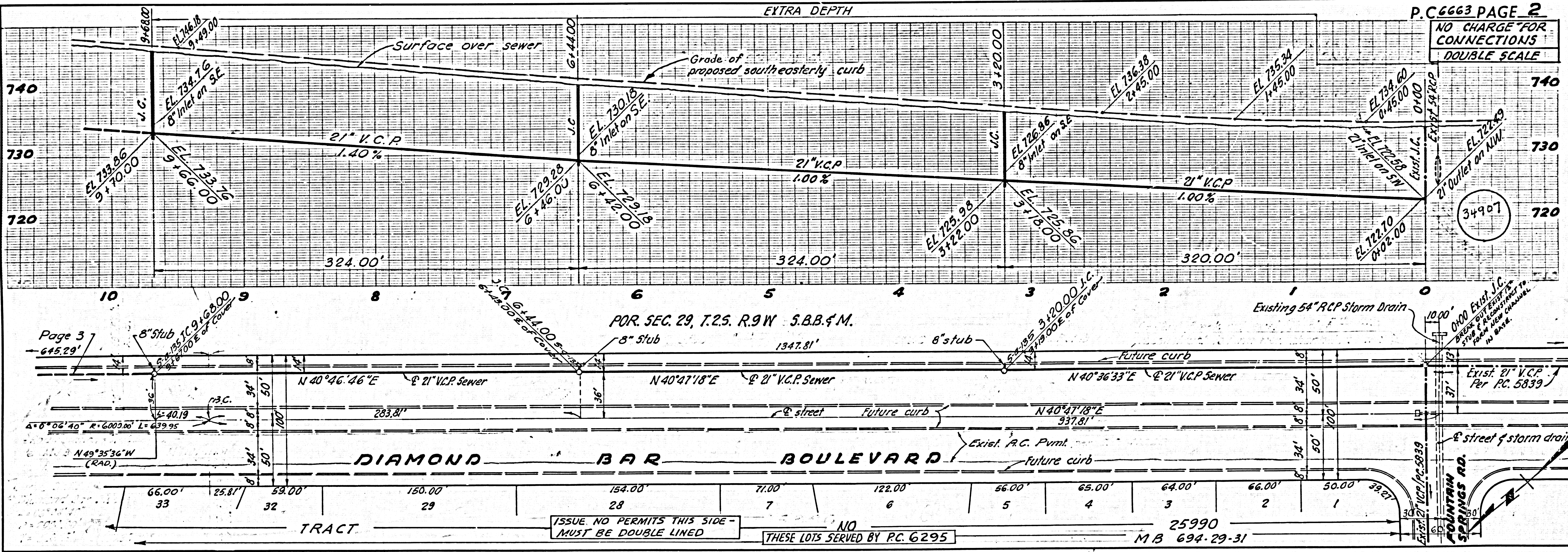
DOUBLE SCALE
 VERTICALLY

COLLECT CHARGES
 AS INDICATED
Herald J. Kenny 8-14-63

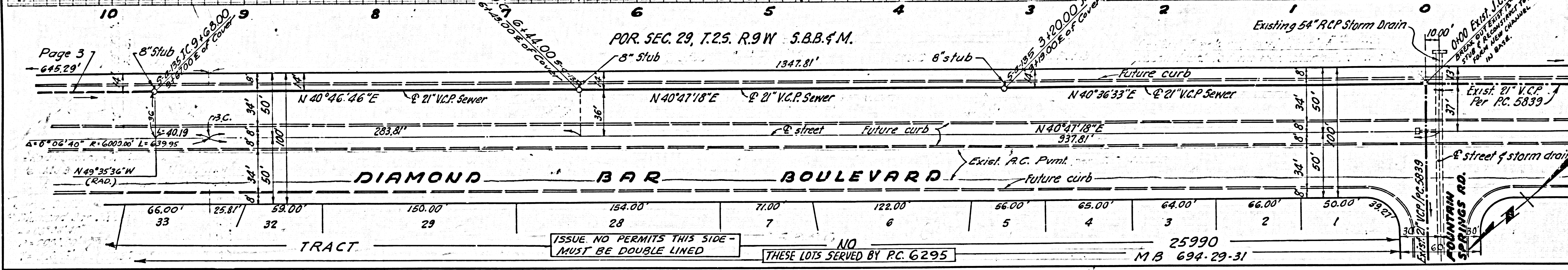
NO CONNECTIONS FOR THE DISPOSAL OF INDUSTRIAL WASTES SHALL BE MADE TO SEWERS SHOWN ON THESE DRAWINGS WITHOUT WRITTEN PERMISSION FROM THE CHIEF ENGINEER AND GENERAL MANAGER OF THE COUNTY SANITATION DISTRICTS.

NOTE:
 GRADES TO WHICH THIS IMPROVEMENT IS TO BE CONSTRUCTED ARE SHOWN ON PLANS AND PROFILE. GRADE POINTS FOR TOP OF CURB, CENTER LINE OF STREETS, OR CENTER LINE OF ALLEYS ARE SHOWN BY CIRCLES ON PROFILE. AT ALL POINTS BETWEEN DESIGNATED POINTS THE GRADE SHALL BE ESTABLISHED SO AS TO CONFORM TO A STRAIGHT LINE DRAWN BETWEEN SAID DESIGNATED POINTS.
 ELEVATIONS ARE IN FEET ABOVE U.S.C. & G.S. SEA LEVEL DATUM OF 1929.
 THIS DRAWING AND THE DATA HEREON ARE HEREBY MADE A PART OF THE SPECIFICATIONS.
 WORK SHALL BE CONSTRUCTED ACCORDING TO SPECIFICATIONS ON FILE IN THE OFFICE OF THE COUNTY ENGINEER AND SHALL BE PROSECUTED ONLY IN THE PRESENCE OF THE COUNTY ENGINEER.
 BEFORE WORK CAN BE STARTED, THE CONTRACTOR MUST OBTAIN A PERMIT TO EXCAVATE IN COUNTY STREETS FROM THE L.A. COUNTY ROAD DEPT., DISTRICT OFFICE NO. 1, AND PAY A FEE TO THE COUNTY ENGINEER ROOM 300 CO. ENGR. BLDG. OR 2ND ST. L.A. SUFFICIENT TO COVER THE COST OF CONSTRUCTION INSPECTION AND RECORD PLANS.
 APPROVAL OF THIS PLAN BY THE COUNTY OF LOS ANGELES DOES NOT CONSTITUTE A REPRESENTATION AS TO THE ACCURACY OF THE LOCATION OF OR THE EXISTENCE OR NON-EXISTENCE OF ANY UNDERGROUND UTILITY PIPE, OR STRUCTURE WITHIN THE LIMITS OF THIS PROJECT. THIS NOTE APPLIES TO ALL PAGES.
 IF WORK IS TO BE DONE IN A STATE HIGHWAY, A PERMIT MUST BE OBTAINED FROM THE STATE OF CALIFORNIA, DIVISION OF HIGHWAYS, 120 SOUTH SPRING STREET.

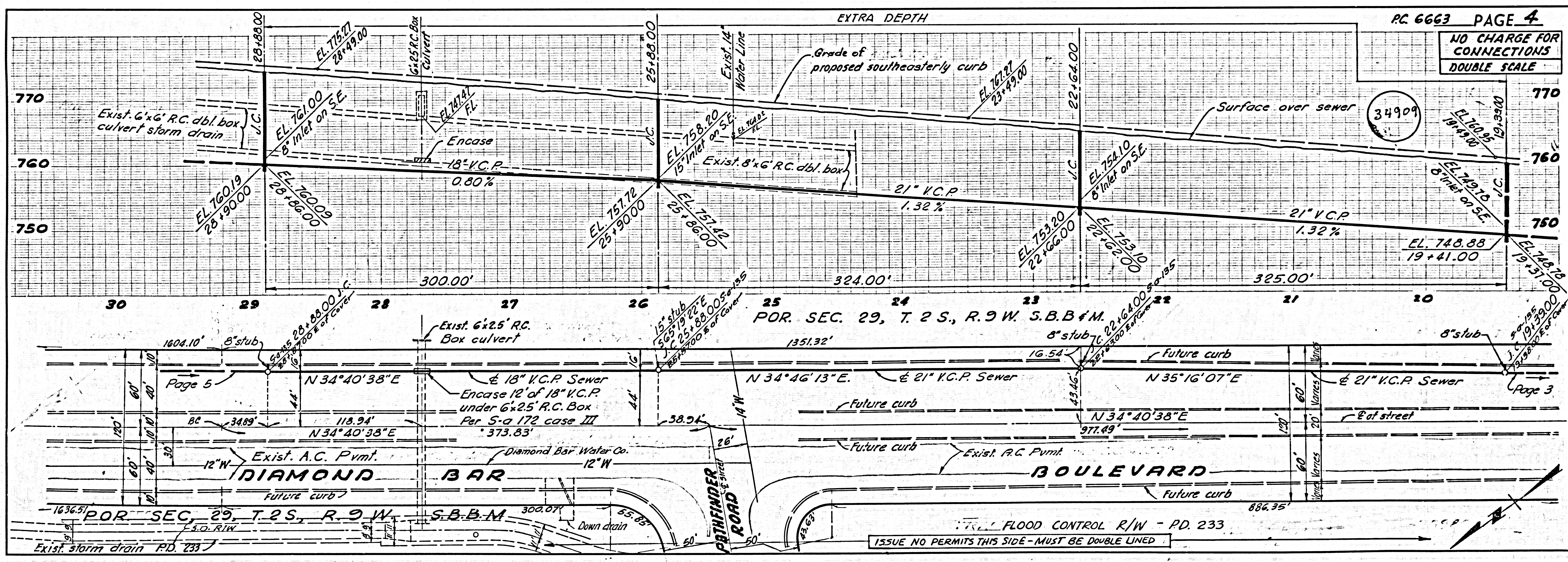
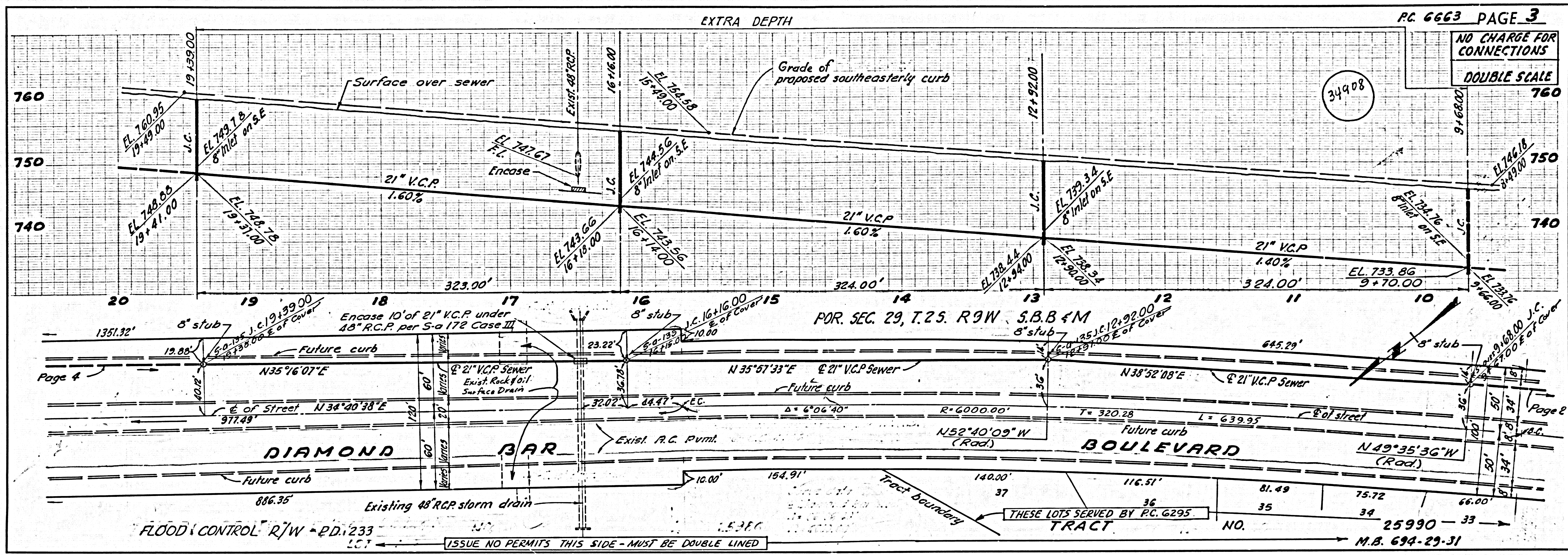
COUNTY OF LOS ANGELES, CALIFORNIA
 APPROVED, JOHN A. LAMBIE, COUNTY ENGINEER APPROVED, J. D. PARKHURST, CHIEF ENGINEER
 BY: *Richard E. Kelly* ASST. SANITATION ENGINEER BY: *W. J. Parkhurst* OFFICE ENGINEER
 CHECKED BY: *Henry Lee* 8-17-63 OFFICE OF COUNTY ENGINEER, REG. C. E. NO. 10223
 APPROVED: *Arthur W. Kiesel* 8-26-63 SAN DIMAS REGIONAL ENGINEER



P.C. 6663 PAGE 2
 NO CHARGE FOR CONNECTIONS
 DOUBLE SCALE

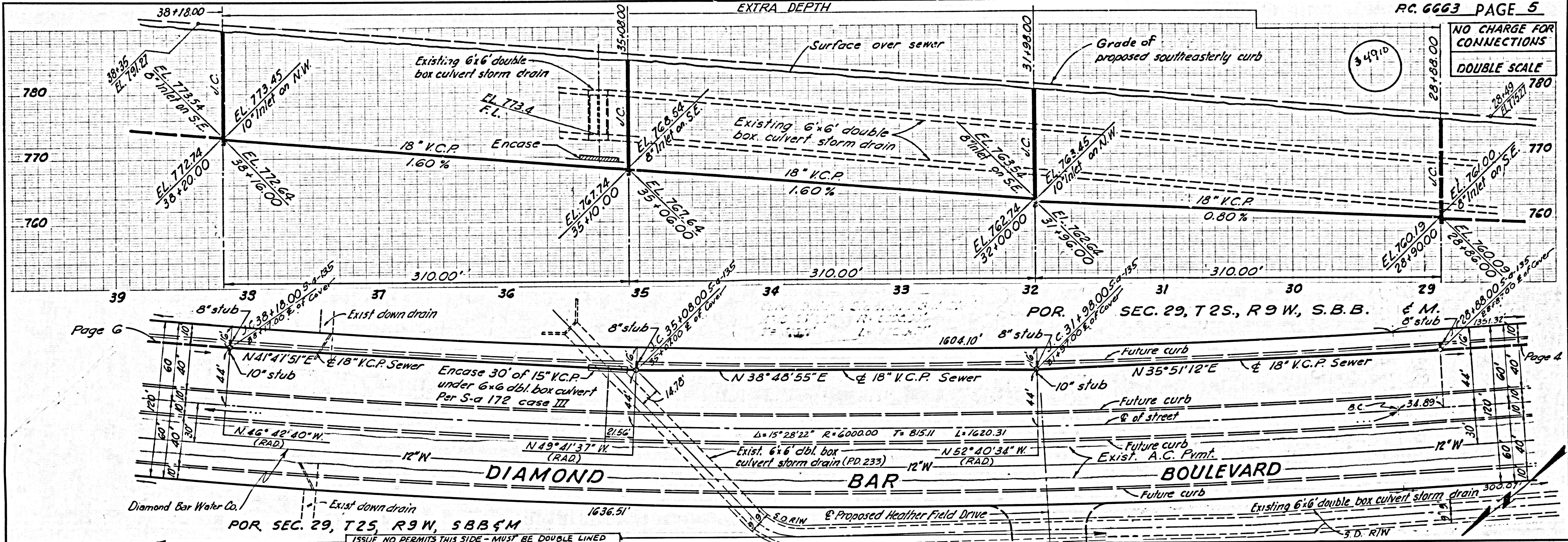


ISSUE NO PERMITS THIS SIDE - MUST BE DOUBLE LINED
 THESE LOTS SERVED BY P.C. 6295
 25990
 M.B. 694-29-31



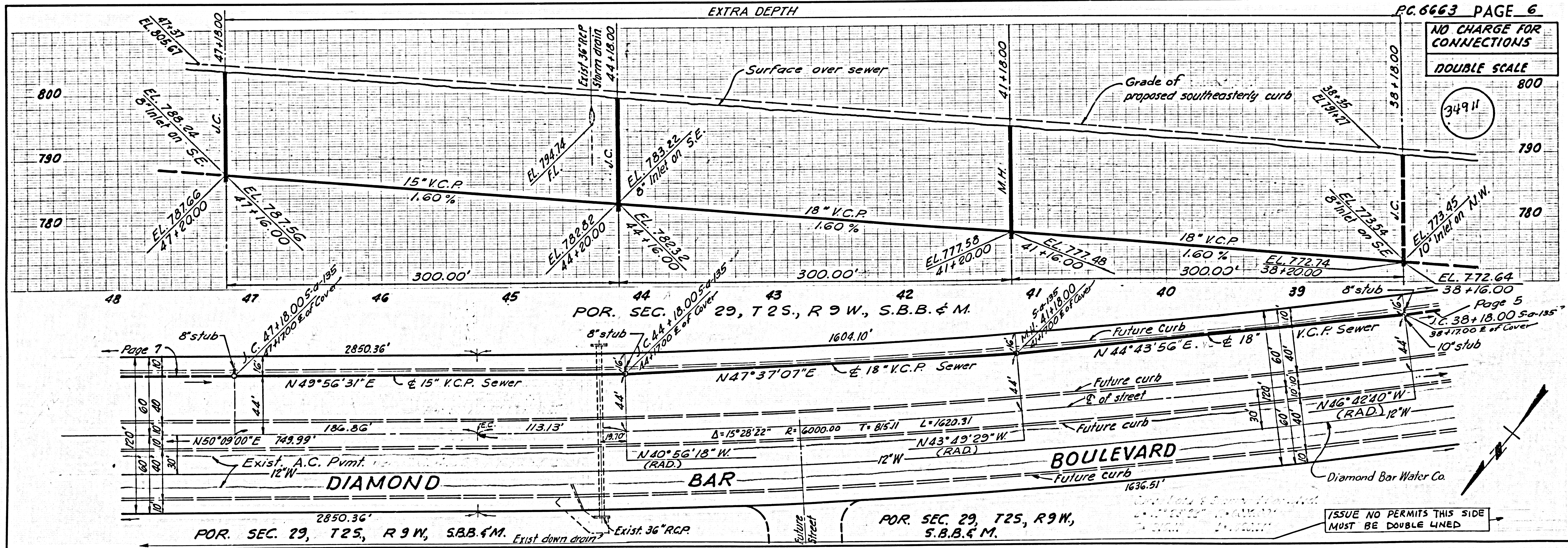
NO CHARGE FOR CONNECTIONS
DOUBLE SCALE

34910



NO CHARGE FOR CONNECTIONS
DOUBLE SCALE

34911



NO CHARGE FOR CONNECTIONS

DOUBLE SCALE

