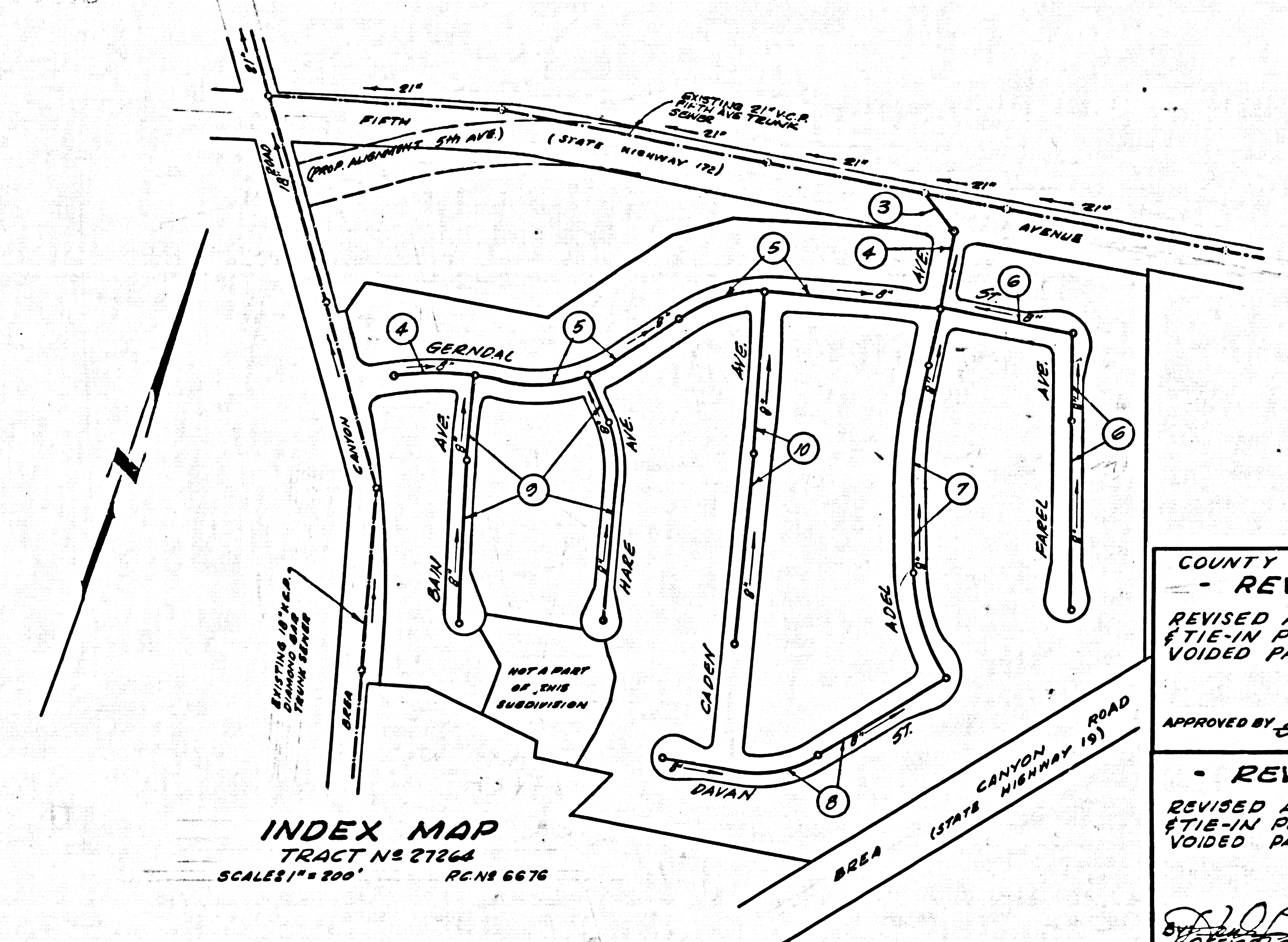


B.M. 56.1798 ELEV. 579.903
 ROAD DEPARTMENT B.M. TAB IN CONCRETE
 HEADWALL ON NORTH EASTERLY CORNER OF
 NORTH AVENUE AND BREA CANYON ROAD 26'
 NORTHERLY AND 81' EASTERLY OF THE
 CENTERLINE INTERSECTION.
 BASELINE QUAD. 19 55



INDEX MAP
 TRACT NO. 27264
 SCALE 1" = 200'
 RCN 6676

DOUBLE SCALE
 LA PUENTE BLDG. DIST. NO. 2

PROFILE ALIGNMENT AND GRADE OF
 SANITARY SEWERS PAGE 1
 P.C. 6676

TRACT NO. 27264
 PRIVATE CONTRACT NO. 6676

W.S. 39
 3 SHEETS, 10 PAGES
 SCALE: VERT. 1" = 8'
 HORIZ. 1" = 40'
 JULY, 1963

PREPARED IN THE OFFICES OF
THOMSEN ENGINEERING, INC.

by *John C. Thomsen*
 REG. C. E. NO. 4244

FOR LEGEND SEE PLAN NO. S-64

- NOTES:
1. PROVIDE STAKES ON THE PROPERTY LINE OR PROPERTY LINES PRODUCED AT RIGHT ANGLES TO THE SEWER LINE AT THE CENTER LINE OF EACH MANHOLE.
 2. NO REPRESENTATIVE OF THE COUNTY ENGINEER WILL SURVEY OR LAY OUT ANY PORTION OF THE WORK.
 3. THE PRIVATE ENGINEER SHALL FURNISH THE COUNTY ENGINEER WITH GRADE SHEETS AND STATIONING FOR ALL HOUSE LATERALS AND Y BRANCHES AND SHALL PROVIDE STAKES FOR THEM AT THEIR PROPER LOCATIONS WITH STATIONING PLAINLY MARKED. ALL HOUSE LATERALS SHALL BE CONSTRUCTED IN A STRAIGHT ALIGNMENT AT RIGHT ANGLES FROM THE MAIN LINE SEWER EXCEPT AS SHOWN ON THE PLANS. HOUSE LATERALS FROM CHIMNEYS SHALL NOT HAVE AN ANGLE OF LESS THAN 45° WITH THE MAIN LINE SEWER. ANY CHANGE IN ALIGNMENT SHALL BE REQUESTED IN WRITING BY THE PRIVATE ENGINEER.
 4. THE PRIVATE ENGINEER SHALL FURNISH THE HOUSE LATERAL DEPTH AT THE PROPERTY LINE BELOW THE CURB ELEVATION FOR EACH HOUSE LATERAL ON THE GRADE SHEET.
 5. NO REVISIONS SHALL BE MADE IN THESE PLANS WITHOUT THE APPROVAL OF THE COUNTY ENGINEER.
 6. THE CONTRACTOR SHALL NOTIFY THE CONSTRUCTION DIVISION BY TELEPHONE, MADISON 9-4747, EXT. 81551, AT LEAST TWENTY-FOUR HOURS BEFORE STARTING ANY WORK UNDER THIS CONTRACT.
 7. MANHOLES SHALL BE BRICK SEWER STRUCTURES PER S-6-104. PRECAST CONCRETE MANHOLES PER S-6-115 OR S-6-173 MAY BE USED AS AN ALTERNATE IN LOCATIONS APPROVED BY THE COUNTY ENGINEER.
 8. USE STANDARD MANHOLE FRAMES AND COVERS, S-6-172.
 9. MANHOLE TOPS IN UNIMPROVED RIGHTS-OF-WAY TO BE SIX INCHES ABOVE FINISHED GRADE.
 10. USE EXTRA STRENGTH PIPE. ALL PIPE IS STANDARD DEPTH EXCEPT AS NOTED.
 11. USE MECHANICAL COMPRESSION JOINTS FOR ALL V.C.P. JOINTS PER SPECS., SECS. 34 & 48 & 49.
 12. IF A POWER POLE IS WITHIN THREE FEET OF THE SEWER, THE SEWER SHALL BE ENCASED, PER S-6-173, CASE III, TWO FEET ON EITHER SIDE FROM THE FRONT OF INTERFERENCE.
 13. IF DURING THE COURSE OF CONSTRUCTION IT IS DETERMINED THAT THERE IS LESS THAN FOUR FEET OF COVER OVER THE TOP OF A MAIN LINE OR HOUSE LATERAL V.C.P. SEWER WHICH IS NOT INDICATED ON THE PLANS, THE PIPE SHALL BE ENCASED PER S-6-173, CASE III, UNLESS OTHERWISE APPROVED BY THE COUNTY ENGINEER.
 14. HOUSE LATERALS TO BE CONSTRUCTED WITH INVERTS AT PROPERTY LINE... 6" FEET BELOW CURB GRADE EXCEPT AS NOTED.
 15. RESURFACE ALL TRENCHES WITHIN PAVED AREAS TO MEET L.A. COUNTY ROAD DEPT. OR CALIFORNIA STATE HIGHWAY REQUIREMENTS IN ACCORDANCE WITH PERMITS.
 16. FOR ALLOWABLE LEAKAGE TEST USE FORMULA NO. 2, SPECS., SEC. 54.
 17. ALL STATE & LOCAL TRENCH SAFETY ORDERS WILL BE RIGIDLY ENFORCED.
 18. THE SEWER PIPE LAYED WITHIN THE STATE RIGHT-OF-WAY SHALL COMPLY WITH AND BE PLACED IN ACCORDANCE WITH SECTIONS 48 AND 51 OF THE "UNIFORM BUILDING STANDARDS SPECIFICATIONS" DATED JANUARY 1962.

COUNTY SAN. DIST. NO. 21
 REVISION

REVISED ALIGNMENT, GRADE & TIE-IN POINT ON PAGE 3 & VOIDED PAGE 2
 APPROVED BY *J. Posthumus*
 OFFICE ENGINEER

REVISION
 REVISED ALIGNMENT, GRADE & TIE-IN POINT ON PAGE 3 & VOIDED PAGE 2

BY *J. Posthumus* PER C.E. 1043 DATE 2-2-64
 OFFICE OF COUNTY ENGINEER

NO CONNECTIONS FOR THE DISPOSAL OF INDUSTRIAL WASTES SHALL BE MADE TO SEWERS SHOWN ON THESE DRAWINGS WITHOUT WRITTEN PERMISSION FROM THE CHIEF ENGINEER AND GENERAL MANAGER OF THE COUNTY SANITATION DISTRICTS.

COLLECT CHARGES AS INDICATED
Walter Krane

REVISION
 REVISED CURB AND SEWER GRADES IN PAGES 1 & 8 AND CURB GRADES IN PAGES 3 & 4.
 APPROVED BY *Walter Krane* PER C.E. 11636 DATE 8-25-64
 OFFICE OF COUNTY ENGINEER

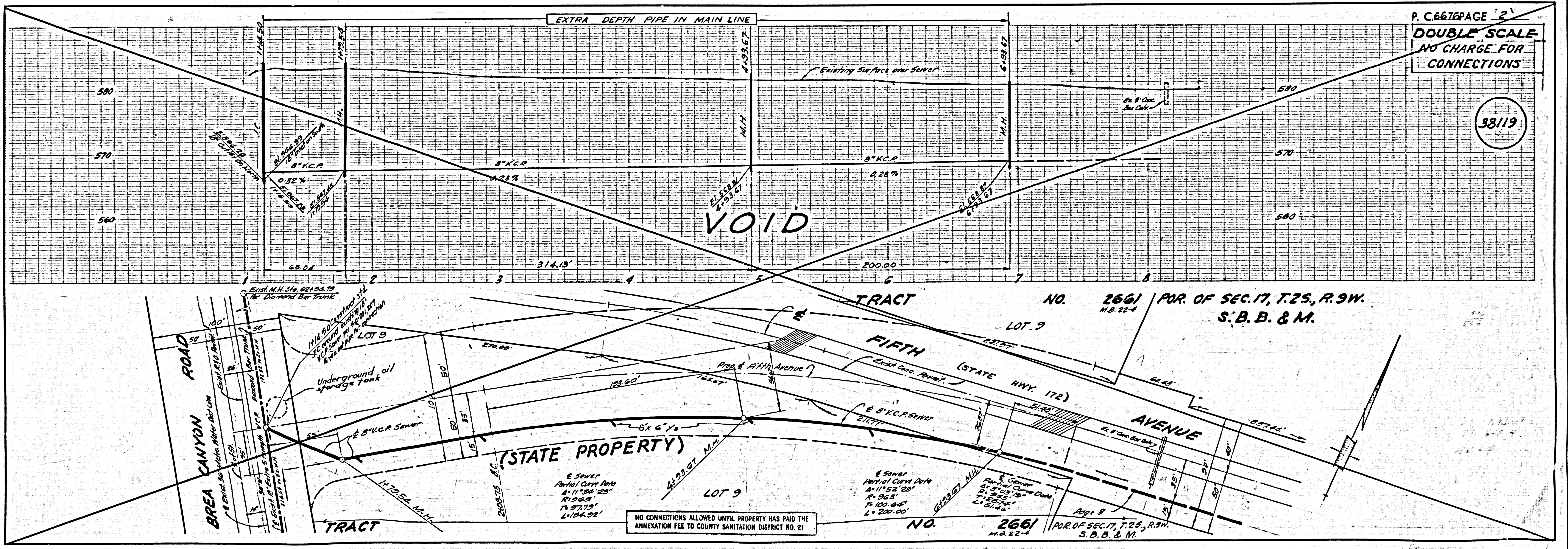
NOTE:
 GRADES TO WHICH THIS IMPROVEMENT IS TO BE CONSTRUCTED ARE SHOWN ON PLANS AND PROFILES. GRADE POINTS FOR TOP OF CURBS, CENTER LINE OF STREETS, OR CENTER LINE OF ALLEYS ARE SHOWN BY CIRCLES ON PROFILES AT ALL POINTS BETWEEN DESIGNATED POINTS THE GRADE SHALL BE ESTABLISHED SO AS TO CONFORM TO A STRAIGHT LINE DRAWN BETWEEN SAID DESIGNATED POINTS. ELEVATIONS ARE IN FEET ABOVE U.S.C. & G.S. SEA LEVEL DATUM OF 1929. THIS DRAWING AND THE DATA HEREON ARE HEREBY MADE A PART OF THE SPECIFICATIONS. WORK SHALL BE CONSTRUCTED ACCORDING TO STANDARD SPECIFICATIONS DATED MAY 22, 1962, ON FILE IN THE OFFICE OF THE COUNTY ENGINEER AND SHALL BE PROCEEDED ONLY IN THE PRESENCE OF THE COUNTY ENGINEER. BEFORE WORK CAN BE STARTED, THE CONTRACTOR MUST OBTAIN A PERMIT TO EXCAVATE IN COUNTY STREETS FROM THE L.A. COUNTY ROAD DEPT., DISTRICT OFFICE NO. 1, AND PAY A FEE TO THE COUNTY ENGINEER, ROOM 340, COUNTY ENGINEERING BUILDING, ONE WEST SECOND STREET OF SAN DIMAS, CALIFORNIA, REGIONAL OFFICE, SUFFICIENT TO COVER THE COST OF CONSTRUCTION INSPECTION AND RECORD PLANS. APPROVAL OF THIS PLAN BY THE COUNTY OF LOS ANGELES DOES NOT CONSTITUTE A REPRESENTATION AS TO THE ACCURACY OF THE LOCATION OF OR THE EXISTENCE OR NON-EXISTENCE OF ANY UNDERGROUND UTILITY PIPE, OR STRUCTURE WITHIN THE LIMITS OF THIS PROJECT. THIS NOTE APPLIES TO ALL PAGES. IF WORK IS TO BE DONE IN A STATE HIGHWAY, A PERMIT MUST BE OBTAINED FROM THE STATE OF CALIFORNIA, DIVISION OF HIGHWAYS, 126 SOUTH SPRING STREET, LOS ANGELES, CALIFORNIA.

COUNTY OF LOS ANGELES, CALIFORNIA
 JOHN A. LAMBIE, COUNTY ENGINEER J. D. PARKHURST, CHIEF ENGINEER

APPROVED BY *John C. Thomsen* ASSISTANT SANITATION ENGINEER APPROVED BY *Walter Krane* OFFICE ENGINEER

SUBMITTED BY *Richard W. Lisle* SAN DIMAS REGIONAL ENGINEER
 CHECKED BY *B.F. Worthington* 4-20-64
 REG. C.E. NO. 11636

J.N. 0361.18



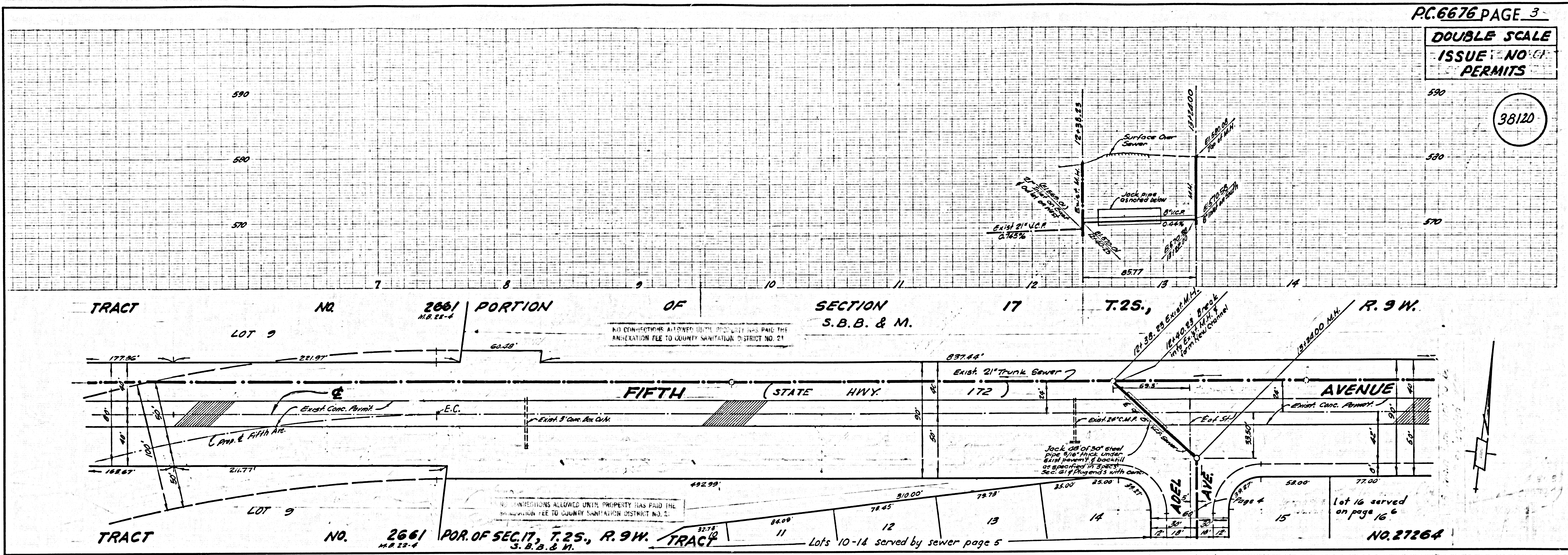
P. C. 6676 PAGE 2
 DOUBLE SCALE
 NO CHARGE FOR CONNECTIONS

38119

NO CONNECTIONS ALLOWED UNTIL PROPERTY HAS PAID THE ANNEXATION FEE TO COUNTY SANITATION DISTRICT NO. 21

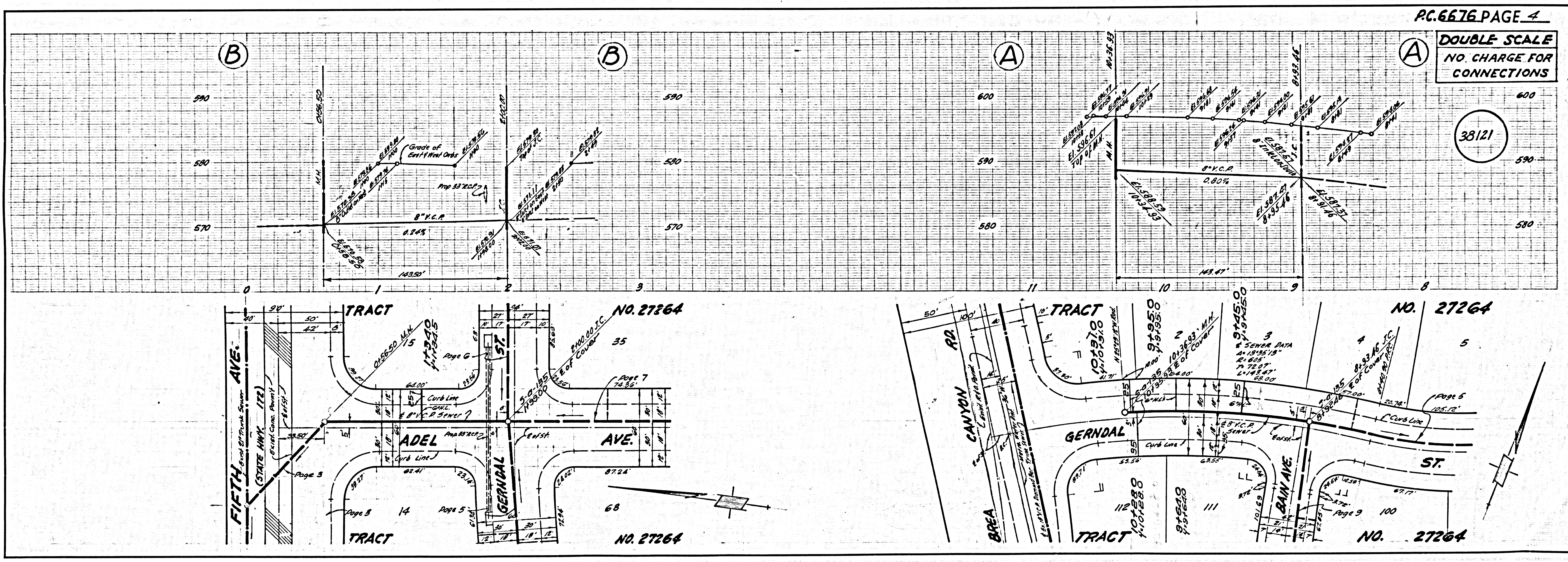
DOUBLE SCALE
ISSUE NO. 61
PERMITS

38120

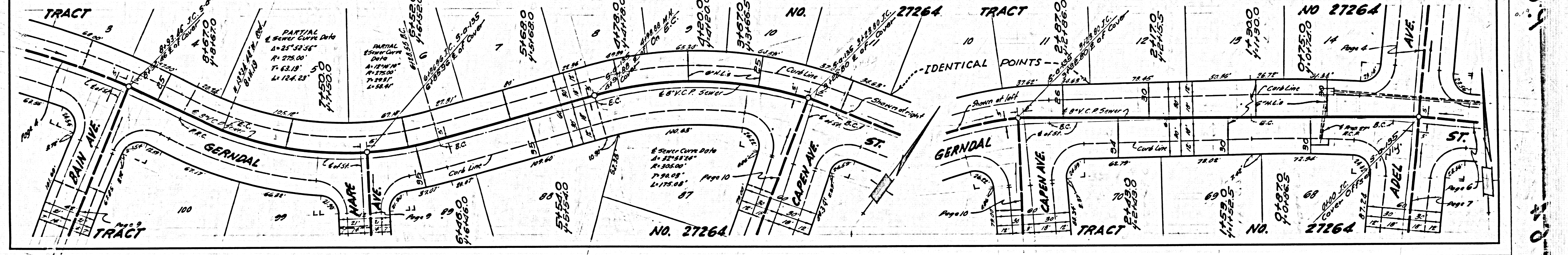
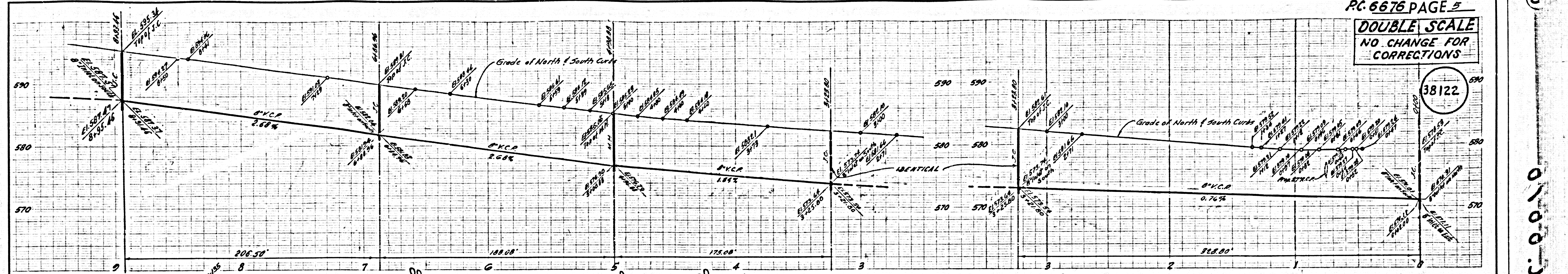


DOUBLE SCALE
NO. CHARGE FOR CONNECTIONS

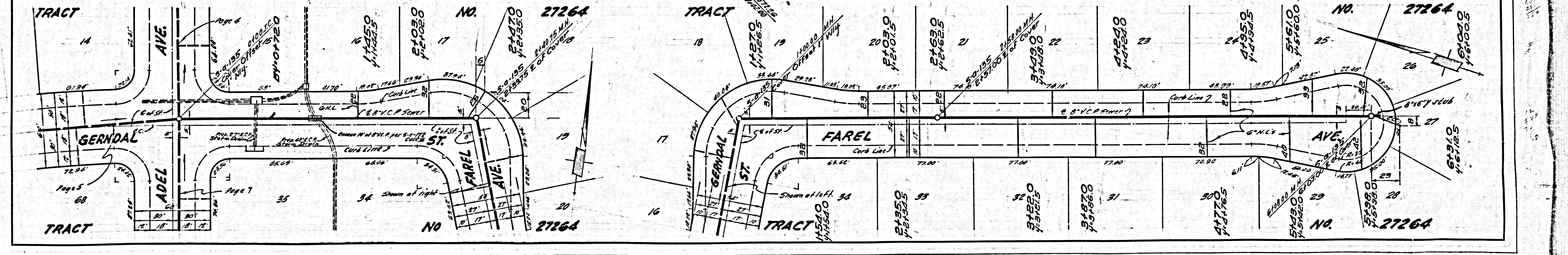
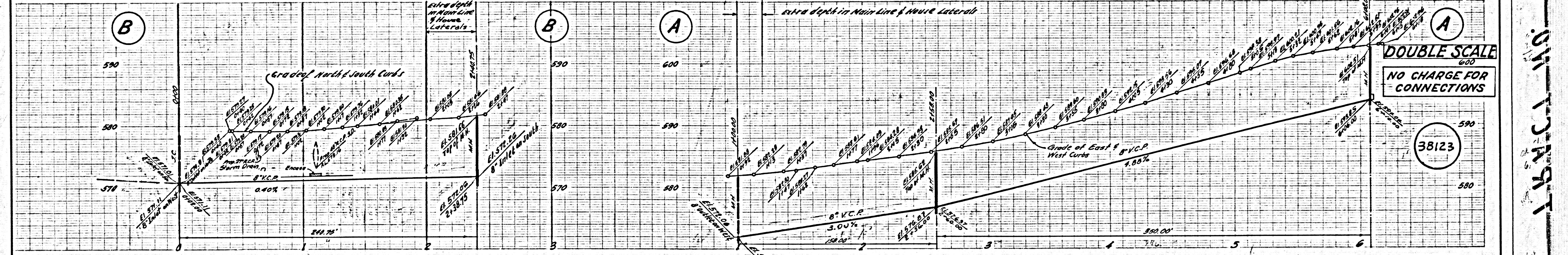
38121



DOUBLE SCALE
NO CHANGE FOR
CORRECTIONS



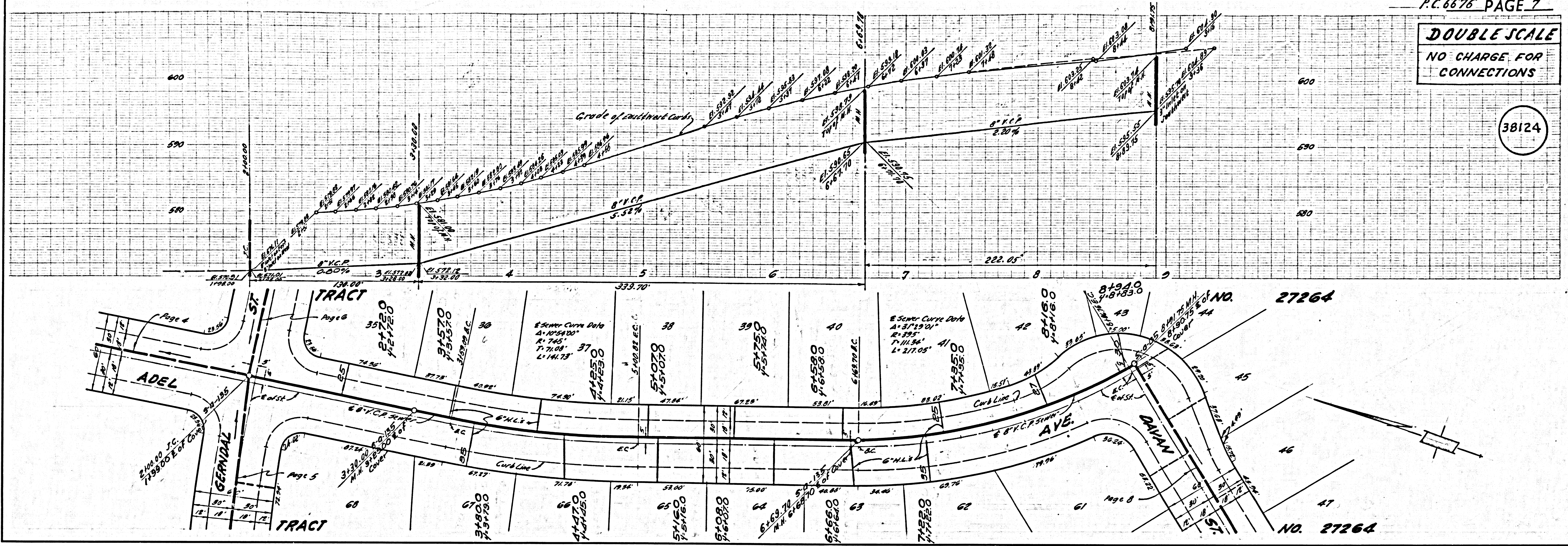
DOUBLE SCALE
NO CHANGE FOR
CORRECTIONS



PC 6676
NO. 27264

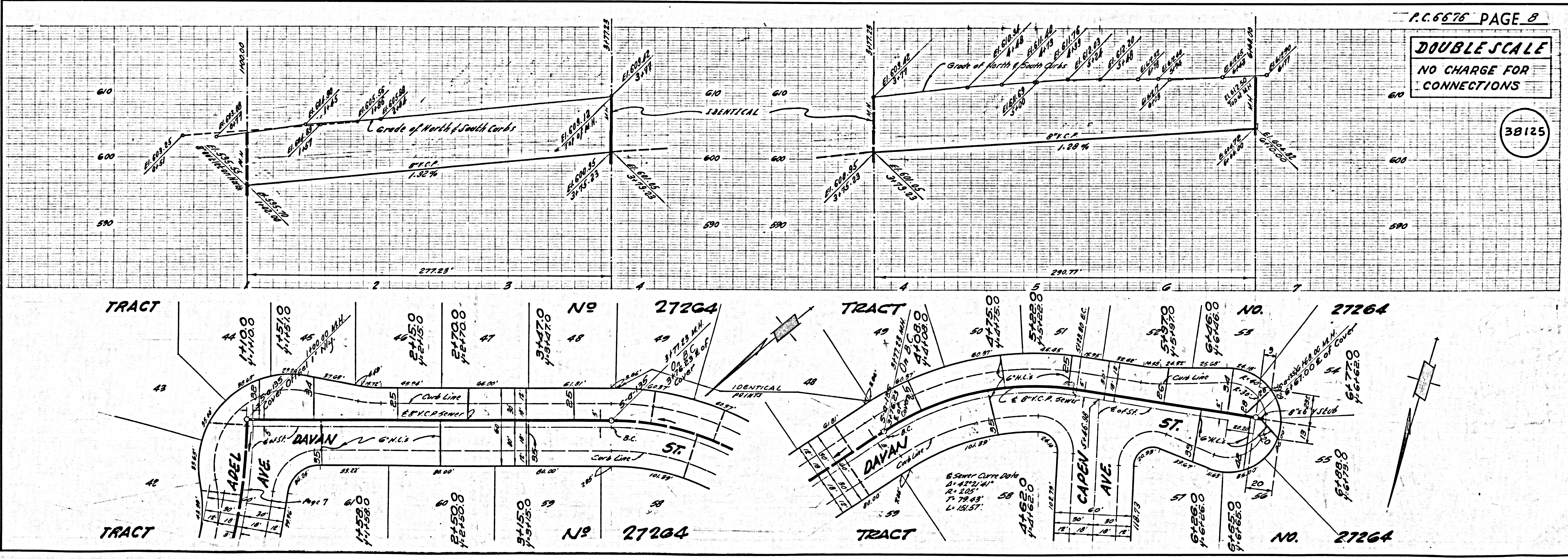
DOUBLE SCALE
NO CHARGE FOR
CONNECTIONS

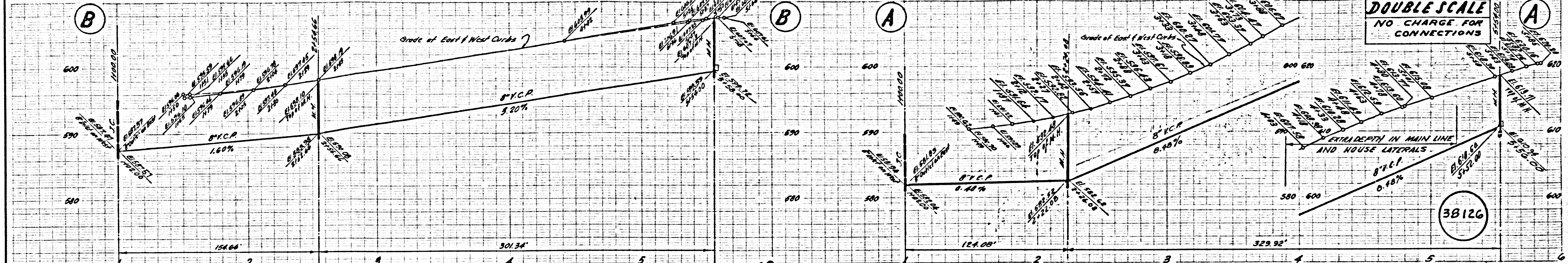
38124



DOUBLE SCALE
NO CHARGE FOR
CONNECTIONS

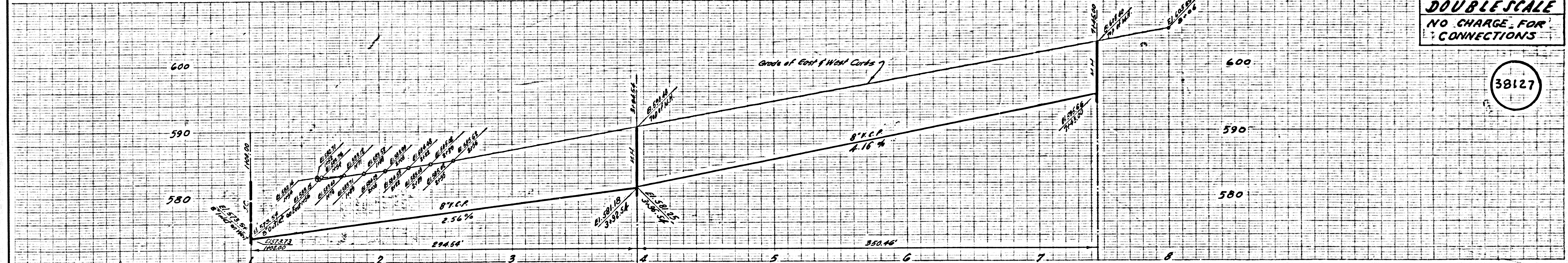
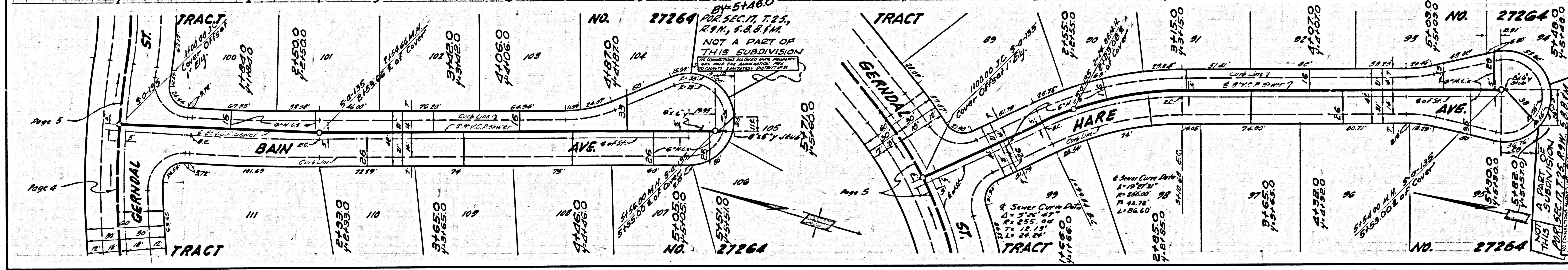
38125





DOUBLE SCALE
NO CHARGE FOR CONNECTIONS

38126



DOUBLE SCALE
NO CHARGE FOR CONNECTIONS

38127

