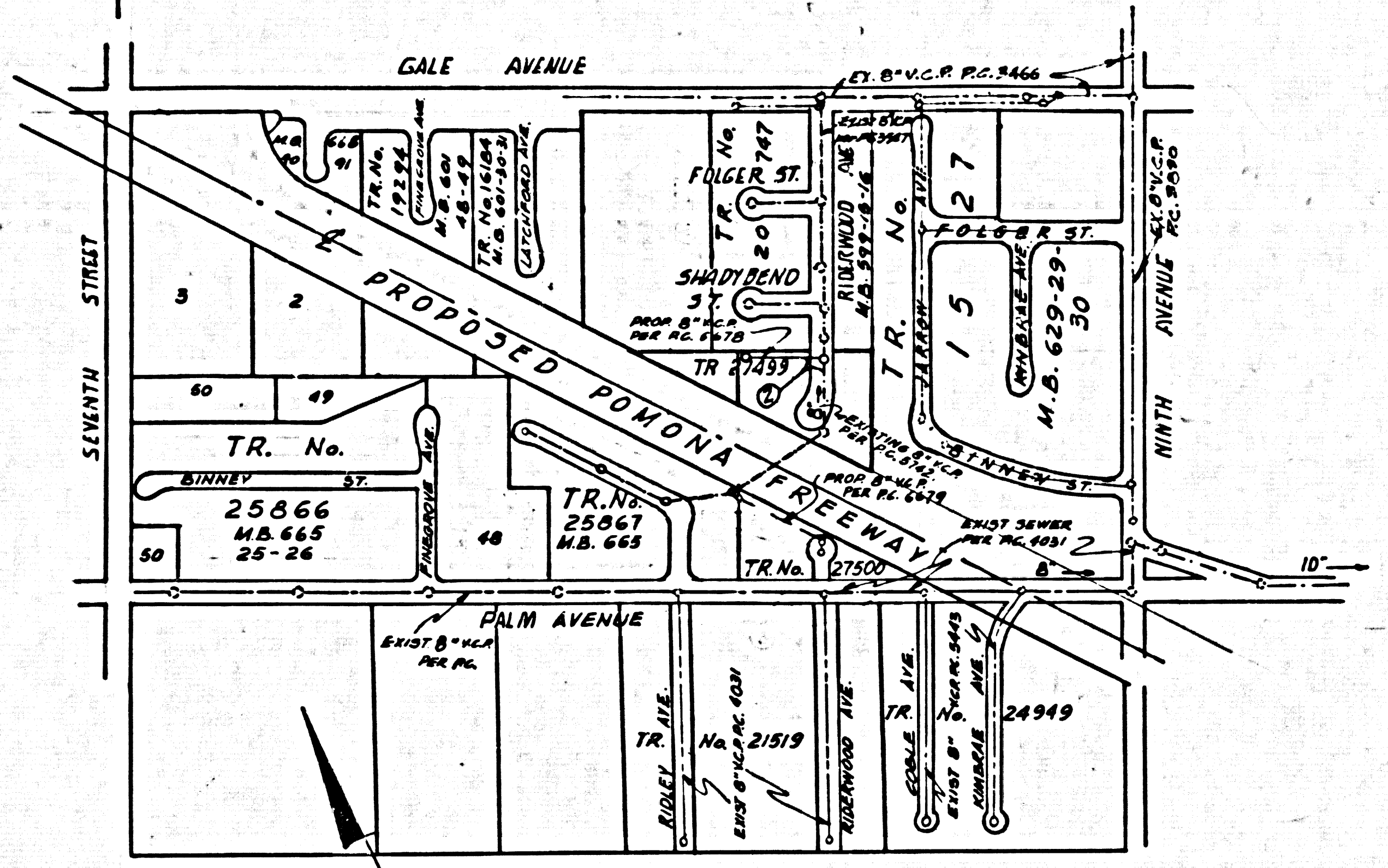


B.M. 561341 ELEV. 330.448
 SPK AND LD. 4' S. E. OF END OF CURB N.E. CORNER AND 9TH AVE (MED A.Z.B.)
 BASELINE 1955



INDEX MAP
 SCALE 1" = 400'
 TR 27499
 PC 6678

Any connection to the sewage system of County Sanitation District, provided directly or indirectly by the sewers shown on these plans, shall be considered a temporary connection until all area sewered is annexed to said district, at which time the connection shall become permanent. If for any reason the annexation to the district of any area sewered hereunder is not completed, the property not in the district will be required to disconnect unless a contract is entered into with the district providing for the disposal of sewage from the area.

COLLECT CHARGES AS INDICATED
Herald P. Kenny 9-21-63

NO CONNECTIONS FOR THE DISPOSAL OF INDUSTRIAL WASTES SHALL BE MADE TO SEWERS SHOWN ON THESE DRAWINGS WITHOUT WRITTEN PERMISSION FROM THE CHIEF ENGINEER AND GENERAL MANAGER OF THE COUNTY SANITATION DISTRICTS.

LA PUENTE BLDG. DIST. NO. 2

PROFILE ALIGNMENT AND GRADE OF
SANITARY SEWERS P.C. 6678
 PAGE 1

TO BE CONSTRUCTED IN
TRACT No. 27499

PRIVATE CONTRACT NO. 6678

W.S. 37
 1 SHEETS, 2 PAGES

SCALE: VERT. 1" = 4' HORIZ. 1" = 40' JUNE, 1963
 PREPARED IN THE OFFICES OF

TECHNOLOGICAL ENGINEERING CORPORATION

By: *R. L. ...*
 REG. C. E. NO. 7882

FOR LEGEND SEE PLAN NO. S-64

NOTE:
 GRADES TO WHICH THIS IMPROVEMENT IS TO BE CONSTRUCTED ARE SHOWN ON PLANS AND PROFILES. GRADE POINTS FOR TOP OF CURBS, CENTER LINE OF STREETS, OR CENTER LINE OF ALLEYS ARE SHOWN BY CIRCLES ON PROFILES. AT ALL POINTS BETWEEN DESIGNATED POINTS THE GRADE SHALL BE ESTABLISHED SO AS TO CONFORM TO A STRAIGHT LINE DRAWN BETWEEN SAID DESIGNATED POINTS. ELEVATIONS ARE IN FEET ABOVE U.S.C. & G.S. SEA LEVEL DATUM OF 1929.
 THIS DRAWING AND THE DATA HEREON ARE HEREBY MADE A PART OF THE SPECIFICATIONS.
 WORK SHALL BE CONSTRUCTED ACCORDING TO STANDARD SPECIFICATIONS DATED MAY 28, 1962, ON FILE IN THE OFFICE OF THE COUNTY ENGINEER AND SHALL BE PROSECUTED ONLY IN THE PRESENCE OF THE COUNTY ENGINEER.
 BEFORE WORK CAN BE STARTED, THE CONTRACTOR MUST OBTAIN A PERMIT TO EXCAVATE IN COUNTY STREETS FROM THE L.A. COUNTY ROAD DEPT., DISTRICT OFFICE NO. 1, AND PAY A FEE TO THE COUNTY ENGINEER, ROOM 328, COUNTY ENGINEER'S BUILDING, 108 WEST SECOND STREET OR SAN ANGELES REGIONAL OFFICE, SUFFICIENT TO COVER THE COST OF CONSTRUCTION INSPECTION AND RECORD PLANS.
 APPROVAL OF THIS PLAN BY THE COUNTY OF LOS ANGELES DOES NOT CONSTITUTE A REPRESENTATION AS TO THE ACCURACY OF THE LOCATION OF OR THE EXISTENCE OR NON-EXISTENCE OF ANY UNDERGROUND UTILITY PIPE, OR STRUCTURE WITHIN THE LIMITS OF THIS PROJECT. THIS NOTE APPLIES TO ALL PAGES.
 IF WORK IS TO BE DONE IN A STATE HIGHWAY, A PERMIT MUST BE OBTAINED FROM THE STATE OF CALIFORNIA, DIVISION OF HIGHWAYS, 126 SOUTH SPRING STREET, LOS ANGELES, CALIFORNIA.

COUNTY OF LOS ANGELES, CALIFORNIA
 JOHN A. LAMBIE, COUNTY ENGINEER J. D. PARKHURST, CHIEF ENGINEER
 CO. SAN. DIST. NO. 15

APPROVED BY: *[Signature]*
 ASSISTANT SANITATION ENGINEER

APPROVED BY: *[Signature]*
 OFFICE ENGINEER

SUBMITTED BY: *[Signature]*
 SANITATION ENGINEER

CHECKED BY: *[Signature]*
 REG. C. E. NO. 346

J. N. 036120

