

B.M. 5Y5836 ELEV. 24.012
 L&N in W. 2' Guard Post
 on N.E. CARSON ST. & MARTIN
 ST. 40'± N. & 20'± E. of Intersection.
 GARDENA QUAD. 1960

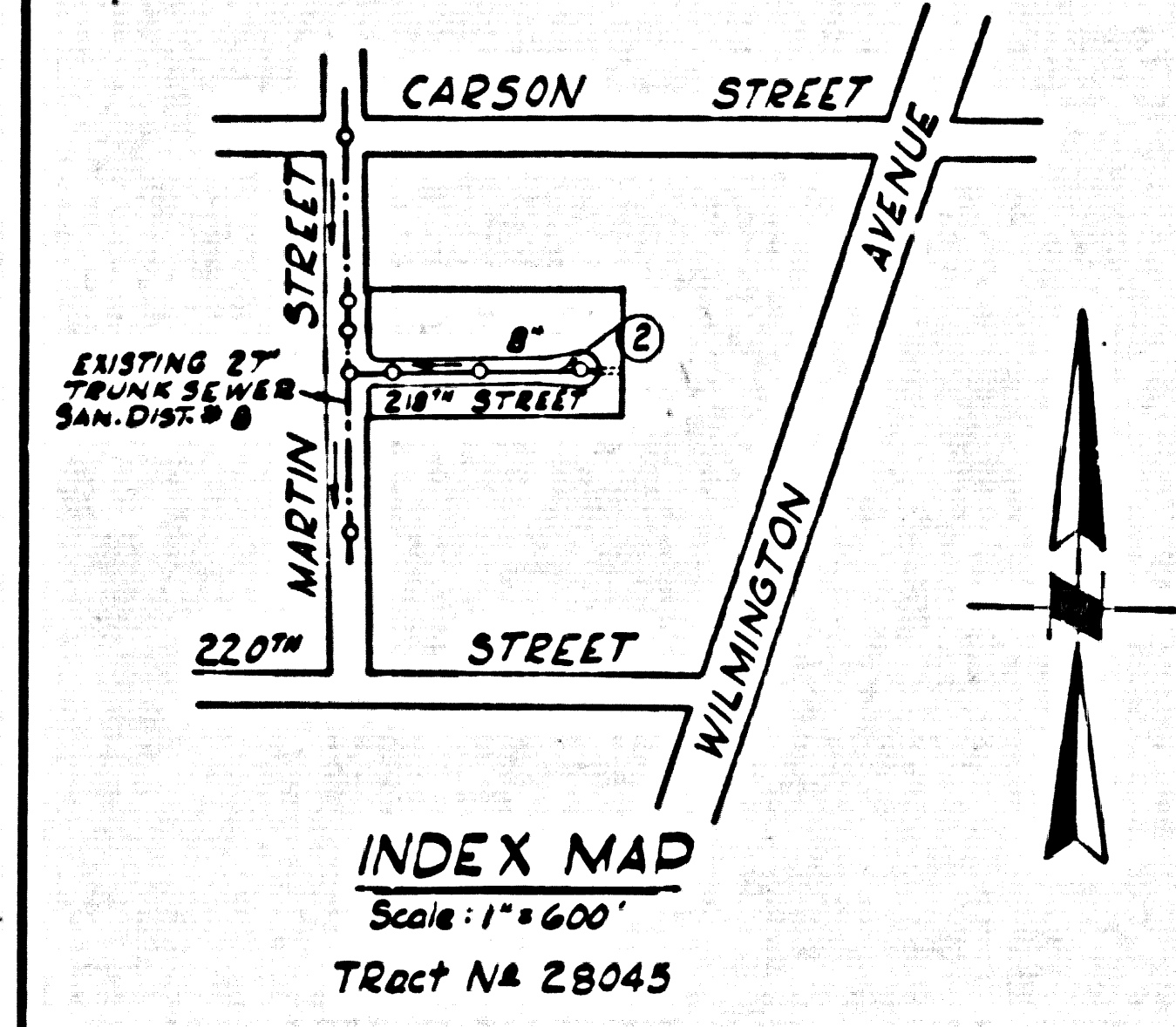
LOMITA BLDG. DIST. NO. 112

PROFILE ALIGNMENT AND GRADE OF
 SANITARY SEWERS PAGE 1

TRACT No 28045
 PRIVATE CONTRACT NO. 6685

W.S. 28
 1 SHEET, 2 PAGES
 SCALE: VERT. 1"=4' HORIZ. 1"=40'
 JUNE, 1963
 PREPARED IN THE OFFICES OF
 SOUTH BAY ENGINEERING CORP.
 By: Raymond L. Quigley
 REG. C. E. NO. 7191

34193



REVISION
 Added G.H.L. of Sta. 1+41 to lot 3
 Raymond L. Quigley
 Raymond L. Quigley, R.C.E. 7191
 APPROVED: _____
 DATE: _____ R.C.E. No 5631

NO CHARGE FOR CONNECTIONS
 J. Curtis 10-10-63

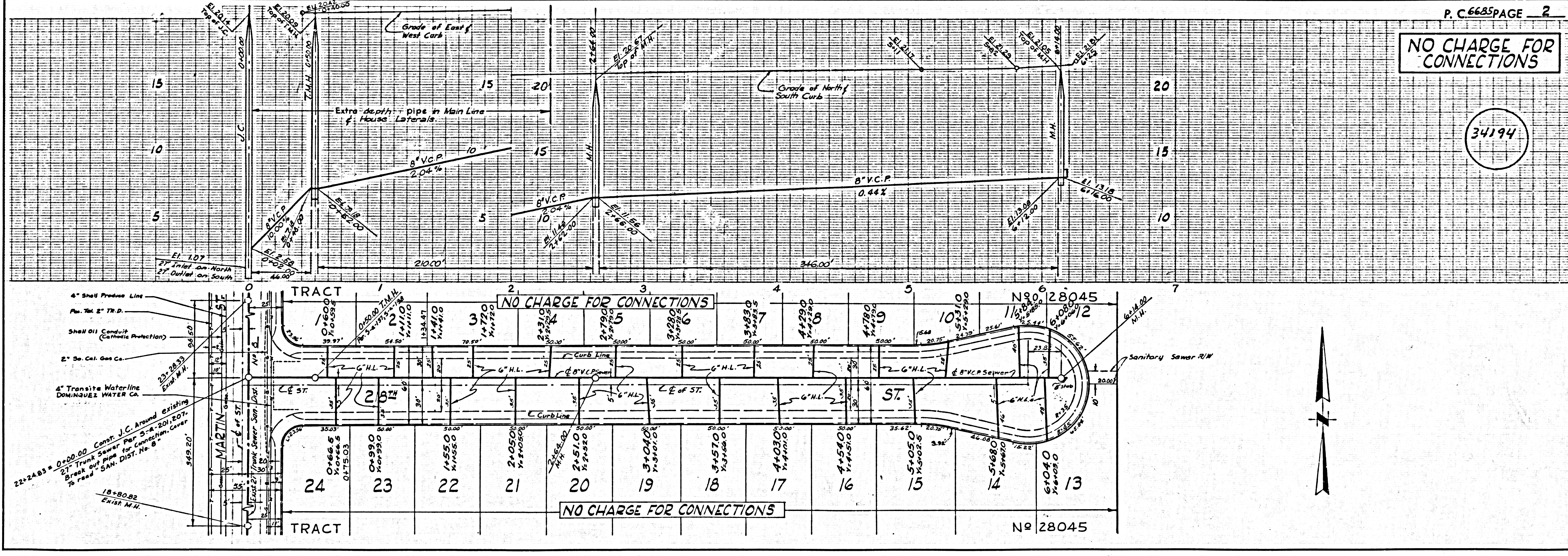
- NOTE:
1. PROVISION STAKES ON THE PROPERTY LINE OR PROPERTY LINES PRODUCED AT RIGHT ANGLES TO THE SEWER LINE AT THE CENTER LINE OF EACH MANHOLE.
 2. NO REPRESENTATIVE OF THE COUNTY ENGINEER WILL SURVEY OR LAY OUT ANY PORTION OF THE WORK.
 3. THE PRIVATE ENGINEER SHALL FURNISH THE COUNTY ENGINEER WITH GRADE SHEETS AND STATIONING FOR ALL HOUSE LATERALS AND Y BRANCHES AND SHALL PROVIDE STAKES FOR THEM AT THEIR PROPER LOCATIONS WITH STATIONING PLAINLY MARKED. ALL HOUSE LATERALS SHALL BE CONSTRUCTED IN A STRAIGHT ALIGNMENT AT RIGHT ANGLES FROM THE MAIN LINE SEWER EXCEPT AS SHOWN ON THE PLANS. HOUSE LATERALS FROM CHIMNEYS SHALL NOT HAVE AN ANGLE OF LESS THAN 45° WITH THE MAIN LINE SEWER. ANY CHANGE IN ALIGNMENT SHALL BE REQUESTED IN WRITING BY THE PRIVATE ENGINEER.
 4. THE PRIVATE ENGINEER SHALL FURNISH THE HOUSE LATERAL DEPTH AT THE PROPERTY LINE BELOW THE TOP OF CURB ELEVATION FOR EACH HOUSE LATERAL ON THE GRADE SHEET.
 5. NO REVISIONS SHALL BE MADE IN THESE PLANS WITHOUT THE APPROVAL OF THE COUNTY ENGINEER.
 6. THE CONTRACTOR SHALL NOTIFY THE CONSTRUCTION DIVISION BY TELEPHONE, MADISON 9-4747, EXT. 8151, AT LEAST TWENTY-FOUR HOURS BEFORE STARTING ANY WORK UNDER THIS CONTRACT.
 7. MANHOLES SHALL BE BRICK SEWER STRUCTURES PER S-2-244 PRECAST CONCRETE MANHOLES PER S-2-132 OR S-2-173 MAY BE USED AS AN ALTERNATE IN LOCATIONS APPROVED BY THE COUNTY ENGINEER. (EXCEPT 155 NOTED)
 8. USE STANDARD MANHOLE FRAMES AND COVERS, S-2-17, EXCEPT AS NOTED.
 9. USE EXTRA STRENGTH PIPE, ALL PIPE IS STANDARD DEPTH EXCEPT AS NOTED.
 10. USE MECHANICAL COMPRESSION JOINTS FOR ALL V.C.P. JOINTS PER SPEC., SECS. 36 & 46, S-69
 11. WHENEVER 8" V.C.P. IS USED IN CONNECTION WITH 12" V.C.P. JOINTS SHALL BE OF THE COMPOUND PER SPEC., SECS. 36 & 46, S-69. ALL MANHOLES SHALL BE OF THE COMPOUND PER SPEC., SECS. 36 & 46, S-69.
 12. IF A POWER POLE IS WITHIN THREE FEET OF THE SEWER, THE SEWER SHALL BE ENCASED, PER S-2-172, CASE III, TWO FEET ON EACH SIDE FROM THE POINT OF INTERFERENCE.
 13. IF DURING THE COURSE OF CONSTRUCTION IT IS DETERMINED THAT THERE IS LESS THAN FOUR FEET OF COVER OVER THE TOP OF A MAIN LINE OR HOUSE LATERAL V.C.P. SEWER WHICH IS NOT INDICATED ON THE PLANS, THE PIPE SHALL BE ENCASED PER S-2-172, CASE III, UNLESS OTHERWISE APPROVED BY THE COUNTY ENGINEER.
 14. HOUSE LATERALS TO BE CONSTRUCTED WITH INVERTS AT PROPERTY LINE. 6" FEET BELOW CURB GRADE EXCEPT AS NOTED.
 15. RESURFACE ALL TRENCHES WITHIN PAVED AREAS TO MEET L.A. COUNTY ROAD DEPT. OR CALIFORNIA STATE HIGHWAY REQUIREMENTS IN ACCORDANCE WITH PERMITS.
 16. FOR ALLOWABLE LEAKAGE TEST USE FORMULA NO. 1, SPEC., SEC. 84.
 17. ALL STATE AND LOCAL TRENCH SAFETY ORDERS WILL BE RIGIDLY ENFORCED.

BEFORE BREAKING INTO ANY EXISTING STRUCTURE OR INDUSTRIAL WASTES SHALL BE MADE TO SEWERS SHOWN ON THESE DRAWINGS WITHOUT WRITTEN PERMISSION FROM THE CHIEF ENGINEER AND GENERAL MANAGER OF THE COUNTY SANITATION DISTRICTS.

NOTE:
 GRADES TO WHICH THIS IMPROVEMENT IS TO BE CONSTRUCTED ARE SHOWN ON PLANS AND PROFILES. GRADE POINTS FOR TOP OF CURBS, CENTER LINE OF STREETS, OR CENTER LINE OF ALLEYS ARE SHOWN BY CIRCLES ON PROFILES. AT ALL POINTS BETWEEN DESIGNATED POINTS THE GRADE SHALL BE ESTABLISHED SO AS TO CONFORM TO A STRAIGHT LINE DRAWN BETWEEN SAID DESIGNATED POINTS. ELEVATIONS ARE IN FEET ABOVE U.S.C. & G.S. SEA LEVEL DATUM OF 1929.
 THIS DRAWING AND THE DATA HEREON ARE HEREBY MADE A PART OF THE SPECIFICATIONS. WORK SHALL BE CONSTRUCTED ACCORDING TO STANDARD SPECIFICATIONS DATED MAY 22, 1962, ON FILE IN THE OFFICE OF THE COUNTY ENGINEER AND SHALL BE PROSECUTED ONLY IN THE PRESENCE OF THE COUNTY ENGINEER.
 BEFORE WORK CAN BE STARTED, THE CONTRACTOR MUST OBTAIN A PERMIT TO EXCAVATE IN COUNTY STREETS FROM THE L.A. COUNTY ROAD DEPT., DISTRICT OFFICE NO. 1, 11111 W. 111TH ST., AND PAY A FEE TO THE COUNTY ENGINEER, ROOM 330, COUNTY ENGINEERING BUILDING, 100 WEST SECOND STREET OR PALM BEACHES (CENTRAL) DIVISION, REGIONAL OFFICE, SUFFICIENT TO COVER THE COST OF CONSTRUCTION INSPECTION AND RECORD PLANS.
 APPROVAL OF THIS PLAN BY THE COUNTY OF LOS ANGELES DOES NOT CONSTITUTE A REPRESENTATION AS TO THE ACCURACY OF THE LOCATION OR OF THE EXISTENCE OR NON-EXISTENCE OF ANY UNDERGROUND UTILITY PIPE, OR STRUCTURE WITHIN THE LIMITS OF THIS PROJECT. THIS NOTE APPLIES TO ALL PAGES.
 IF WORK IS TO BE DONE IN A STATE HIGHWAY, A PERMIT MUST BE OBTAINED FROM THE STATE OF CALIFORNIA, DIVISION OF HIGHWAYS, 120 SOUTH SPRING STREET, LOS ANGELES, CALIFORNIA.

COUNTY OF LOS ANGELES, CALIFORNIA
 JOHN A. LAMBIE, COUNTY ENGINEER J. D. PARKHUKST, CHIEF ENGINEER
 CO. SAN. DIST. NO. 112
 APPROVED BY: [Signature] APPROVED BY: [Signature]
 OFFICE ENGINEER
 SUBMITTED BY: [Signature]
 REGIONAL ENGINEER
 CHECKED BY: [Signature] 10-10-63
 REG. C. E. NO. 2446

J.N. 036125



NO CHARGE FOR CONNECTIONS

34194