

DOUBLE VERTICAL SCALE
ALTADENA BLDG. DIST. NO. 3

PROFILE ALIGNMENT AND GRADE OF P.C. 6686

SANITARY SEWERS PAGE 1

TO BE CONSTRUCTED IN

TRACT N° 27580

PRIVATE CONTRACT NO. 6686

W.S. 88 C-5

3 SHEETS, 6 PAGES
SCALE: VERT. 1"=8'
HORIZ. 1"=40'

PREPARED IN THE OFFICES OF
KEMMERER ENGR. CO. INC.
143 N. DAINTEE AVE. WHITTIER, CALIF.
By: Robert R. Flores

REG. C. E. NO. 11343

FOR LEGEND SEE PLAN NO. S-6-64

NOTES:
1. GRADES TO WHICH THIS IMPROVEMENT IS TO BE CONSTRUCTED ARE SHOWN ON PLANS AND PROFILES. GRADE POINTS FOR TOP OF CURBS, CENTER LINE OF STREETS, OR CENTER LINE OF ALLEYS ARE SHOWN BY CIRCLES ON PROFILES. AT ALL POINTS BETWEEN DESIGNATED POINTS THE GRADE SHALL BE ESTABLISHED SO AS TO CONFORM TO A STRAIGHT LINE DRAWN BETWEEN SAID DESIGNATED POINTS. ELEVATIONS ARE IN FEET ABOVE U.S.C. & G.S. SEA LEVEL DATUM OF 1929. THE DRAWING AND THE DATA HEREON ARE HEREBY MADE A PART OF THE SPECIFICATIONS.
2. BEFORE WORK CAN BE STARTED, THE CONTRACTOR MUST OBTAIN A PERMIT TO EXCAVATE IN COUNTY STREETS FROM THE L.A. COUNTY ROAD DEPT., DISTRICT OFFICE NO. 3, AND PAY A FEE TO THE COUNTY ENGINEER, ROOM 302, COUNTY ENGINEERING BUILDING, 100 WEST SECOND STREET, TEMPE, CALIF. REGIONAL OFFICE, SUFFICIENT TO COVER THE COST OF CONSTRUCTION INSPECTION AND RECORD PLANS.
3. APPROVAL OF THIS PLAN BY THE COUNTY OF LOS ANGELES DOES NOT CONSTITUTE A REPRESENTATION AS TO THE ACCURACY OF THE LOCATION OR OF THE EXISTENCE OR NON-EXISTENCE OF ANY UNDERGROUND UTILITY PIPE, OR STRUCTURE WITHIN THE LIMITS OF THIS PROJECT. THIS NOTE APPLIES TO ALL PAGES.
4. IF WORK IS TO BE DONE BY A STATE HIGHWAY, A PERMIT MUST BE OBTAINED FROM THE STATE OF CALIFORNIA, DIVISION OF HIGHWAYS, 120 SOUTH SPRING STREET, LOS ANGELES, CALIFORNIA.

COUNTY OF LOS ANGELES, CALIFORNIA
JOHN A. LAMBIE, COUNTY ENGINEER J. D. PARKHURST, CHIEF ENGINEER

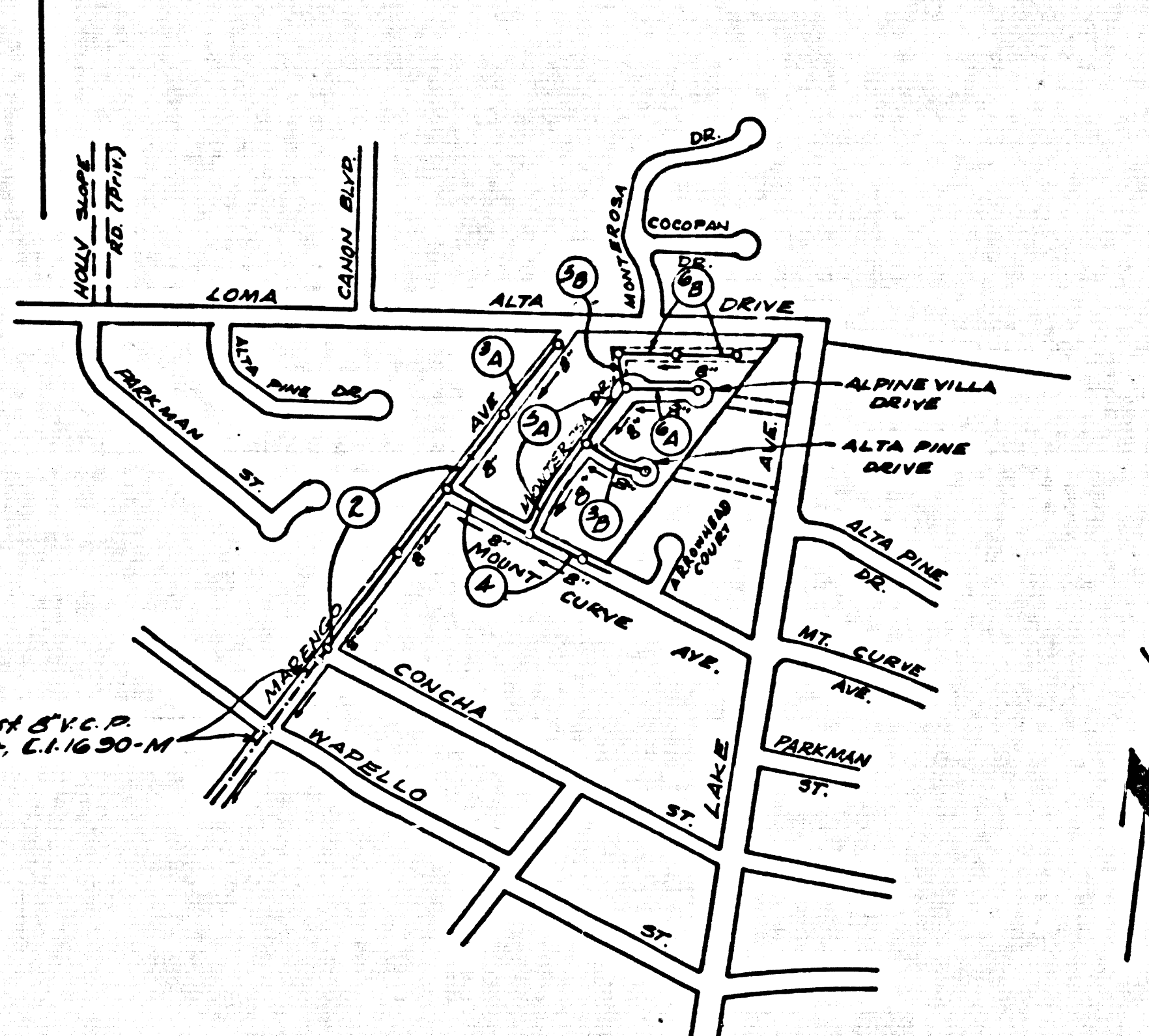
APPROVED BY: [Signature] APPROVED BY: [Signature]
SANITATION ENGINEER OFFICE ENGINEER

SUBMITTED BY: [Signature] REGIONAL ENGINEER

CHECKED BY: [Signature] 10-10-43
REG. C. E. NO. 2486

J. N. 0361 26

B.M. S.Y. 5092 ELEV. 1754.090
C.S. MON. IN WELL CO. 52
17A LORTIA AVE. D.A. 4
MARENGO, STAMPED
R.E. 2177
PASADENA QUAD. 19 55



INDEX MAP
TRACT N° 27580
P.C. 6686
SCALE: 1"=600'

NOTE:
The existence and approximate location of underground utilities or structures shown on these plans were determined by a search of the available public records. To the best of our knowledge there are no existing underground utilities or structures except as shown on these plans. The contractor is required to take due precautionary measures to protect the utilities or structures shown and any other utilities or structures at the site. It shall be the contractor's responsibility to notify the owners of the utilities or structures concerned before starting work.

Revision No 3
Extended sewer in Mt Curve Ave.
Page 4. 37.18 ft. Ely of MH6-4782 &
add one Mt. of Sta 6+83
Approved [Signature] Date 6-4-44
Office of County Engineers

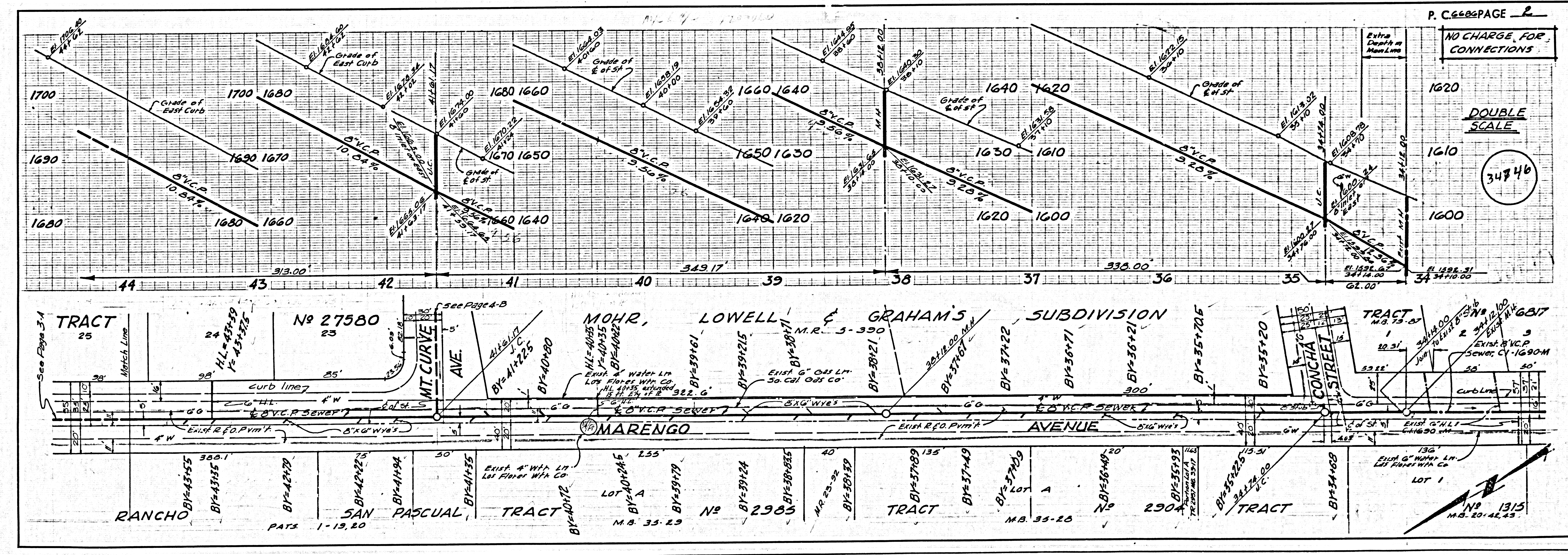
Revision No 2
Added 5 House Laterals on
South Side of Mt Curve Ave.
& One House Lateral on East
Side of Marengo Ave. Extended
Main Line 50' on Mt Curve Ave. Page 4.
Approved [Signature] Date 12-15-43

REVISION NOTE
Lowered curb grade and
sewer main on Mount Curve
Ave. Page 4, & on Marengo
Dr. from Sta 140+00 to Sta
2+75.27 Page 5A.
Approved [Signature] Date 11-13-43

- NOTES:
1. PROVIDE STAKES ON THE PROPERTY LINE OR PROPERTY LINES PRODUCED AT RIGHT ANGLES TO THE SEWER LINE AT THE CENTER LINE OF EACH MANHOLE.
 2. NO REPRESENTATIVE OF THE COUNTY ENGINEER WILL SURVEY OR LAY OUT ANY PORTION OF THE WORK.
 3. THE PRIVATE ENGINEER SHALL FURNISH THE COUNTY ENGINEER WITH GRADE SHEETS AND STATIONING FOR ALL HOUSE LATERALS AND Y BRANCHES AND SHALL PROVIDE STAKES FOR THEM AT THEIR PROPER LOCATIONS WITH STATIONING PLAINLY MARKED. ALL HOUSE LATERALS SHALL BE CONSTRUCTED IN A STRAIGHT ALIGNMENT AT RIGHT ANGLES FROM THE MAIN LINE SEWER EXCEPT AS SHOWN ON THE PLANS. HOUSE LATERALS FROM CHIMNEYS SHALL NOT HAVE AN ANGLE OF LESS THAN 45° WITH THE MAIN LINE SEWER. ANY CHANGE IN ALIGNMENT SHALL BE REQUESTED IN WRITING BY THE PRIVATE ENGINEER.
 4. THE PRIVATE ENGINEER SHALL FURNISH THE HOUSE LATERAL DEPTH AT THE PROPERTY LINE BELOW THE TOP OF CURB ELEVATION FOR EACH HOUSE LATERAL ON THE GRADE SHEET.
 5. NO REVISIONS SHALL BE MADE IN THESE PLANS WITHOUT THE APPROVAL OF THE COUNTY ENGINEER.
 6. THE CONTRACTOR SHALL NOTIFY THE CONSTRUCTION DIVISION BY TELEPHONE, MADISON 9-4747, EXT. 8158, AT LEAST TWENTY-FOUR HOURS BEFORE STARTING ANY WORK UNDER THIS CONTRACT.
 7. MANHOLES SHALL BE BACK SEWER STRUCTURES PER S-104. PRECAST CONCRETE MANHOLES PER S-123 OR S-173 MAY BE USED AS AN ALTERNATE IN LOCATIONS APPROVED BY THE COUNTY ENGINEER.
 8. USE STANDARD MANHOLE FRAMES AND COVERS, S-107, EXCEPT AS NOTED.
 9. MANHOLE TOPS IN UNIMPROVED RIGHTS-OF-WAY TO BE 2 INCHES ABOVE FINISHED GRADE.
 10. USE EXTRA STRENGTH PIPE. ALL PIPE IS STANDARD DEPTH EXCEPT AS NOTED.
 11. USE MECHANICAL COMPRESSION JOINTS FOR ALL V.C.P. JOINTS PER SPECS., SECS. 36 & 48.
 12. WHEN EVER GROUND WATER IS ENCOUNTERED DURING THE CONSTRUCTION OF THE SEWERS, THE V.C.P. JOINTS SHALL BE OF JOINT COMPOUND PER SPECS., SECS. 33 & 48, OR MECHANICAL COMPRESSION JOINTS PER SPECS., SEC. 34.
 13. IF A POWER POLE IS WITHIN THREE FEET OF THE SEWER, THE SEWER SHALL BE ENCASED, PER S-175, CASE III, TWO FEET EACH SIDE FROM THE POINT OF INTERFERENCE.
 14. IF DURING THE COURSE OF CONSTRUCTION IT IS DETERMINED THAT THERE IS LESS THAN FOUR FEET OF COVER OVER THE TOP OF A MAIN LINE OR HOUSE LATERAL V.C.P. SEWER WHICH IS NOT INDICATED ON THE PLANS, THE PIPE SHALL BE ENCASED PER S-175, CASE III, UNLESS OTHERWISE APPROVED BY THE COUNTY ENGINEER.
 15. HOUSE LATERALS TO BE CONSTRUCTED WITH INVERTS AT PROPERTY LINE... FEET BELOW CURB GRADE EXCEPT AS NOTED.
 16. RESURFACE ALL TRENCHES WITHIN PAVED AREAS TO MEET L.A. COUNTY ROAD DEPT. OR CALIFORNIA STATE HIGHWAY REQUIREMENTS IN ACCORDANCE WITH PERMITS.
 17. FOR ALLOWABLE LEAKAGE TEST USE FORMULA NO. 1, SPECS., SEC. 84.
 18. ALL STATE AND LOCAL TRENCH SAFETY ORDERS WILL BE RIGIDLY ENFORCED.
 19. 1/4" HOUSE LATERALS TO BE CONSTRUCTED WITH 1/4" RISE PER FOOT TO PROPERTY LINE.
 20. (a) NO CONSTRUCTION SHALL BE PERMITTED IN FULL AREA UNLESS ACCEPTABLE OBSERVATION IS SUBMITTED TO THE CONSTRUCTION DIVISION OF THE COUNTY ENGINEER'S CONTRACT THAT RELATIVE CONSTRUCTION IS GREATER THAN 30%. CRADLING IS NOT REQUIRED, HOWEVER IF CONSTRUCTION IS GREATER THAN 30%, CRADLING IS NOT REQUIRED, HOWEVER IF CONSTRUCTION IS LESS THAN 30%, THE SEWER MUST BE CRADLED AS SHOWN ON THE STANDARD PLAN S-104, OR HAVE A SPECIAL ASSOCIATE BASIS PER S-175, CASE III, AND MANHOLE BASES SHALL BE CONSTRUCTED PER S-123.

COLLECT CHARGES
AS INDICATED
R. Pearce 10/7/63

NO CONNECTIONS FOR THE DISPOSAL OF INDUSTRIAL WASTES SHALL BE MADE TO SEWERS SHOWN ON THESE DRAWINGS WITHOUT WRITTEN PERMISSION FROM THE CHIEF ENGINEER AND GENERAL MANAGER OF THE COUNTY MAINTENANCE DISTRICTS.



P.C. 6686 PAGE 2
NO CHARGE FOR CONNECTIONS

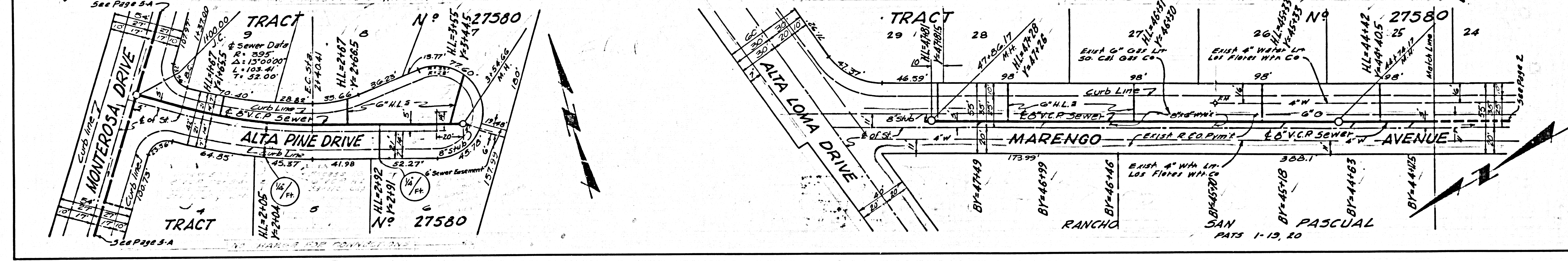
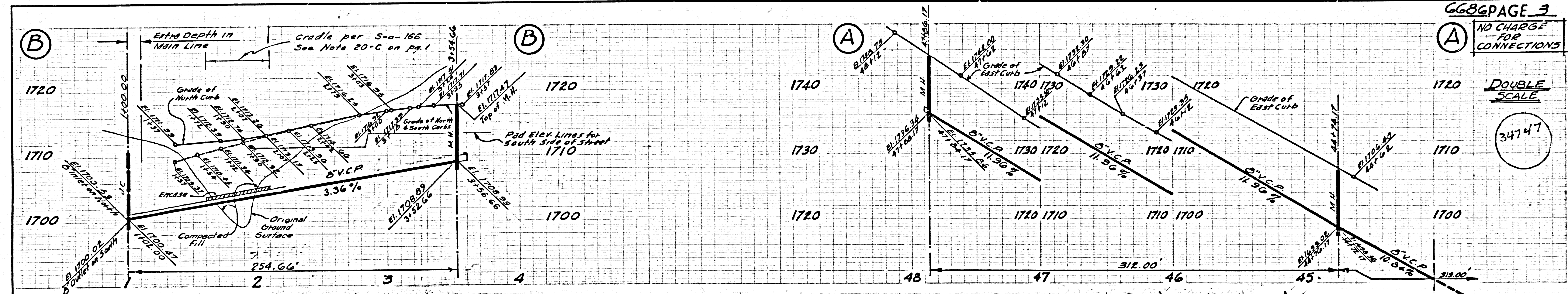
DOUBLE SCALE

34746

NO CHARGE FOR CONNECTIONS

DOUBLE SCALE

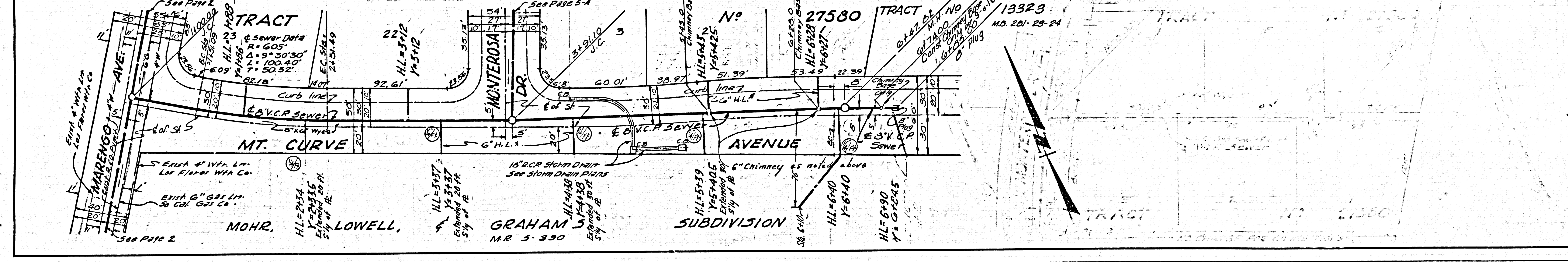
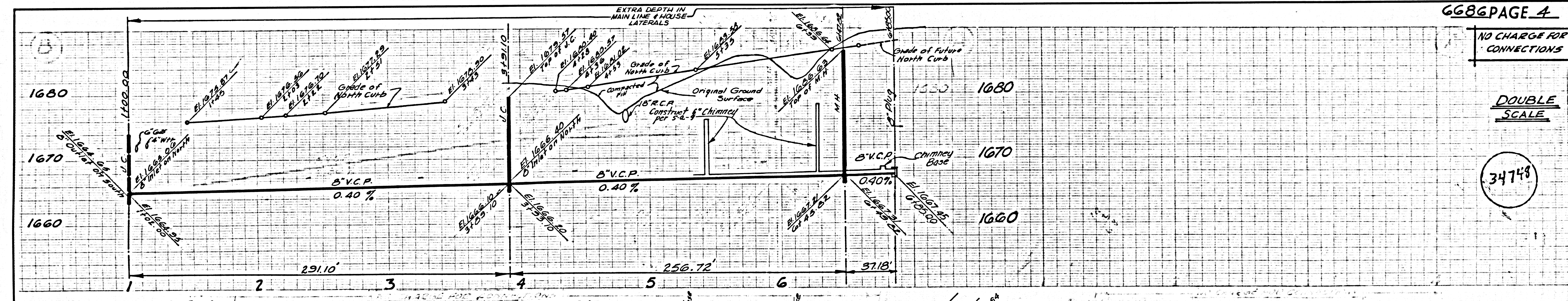
34747

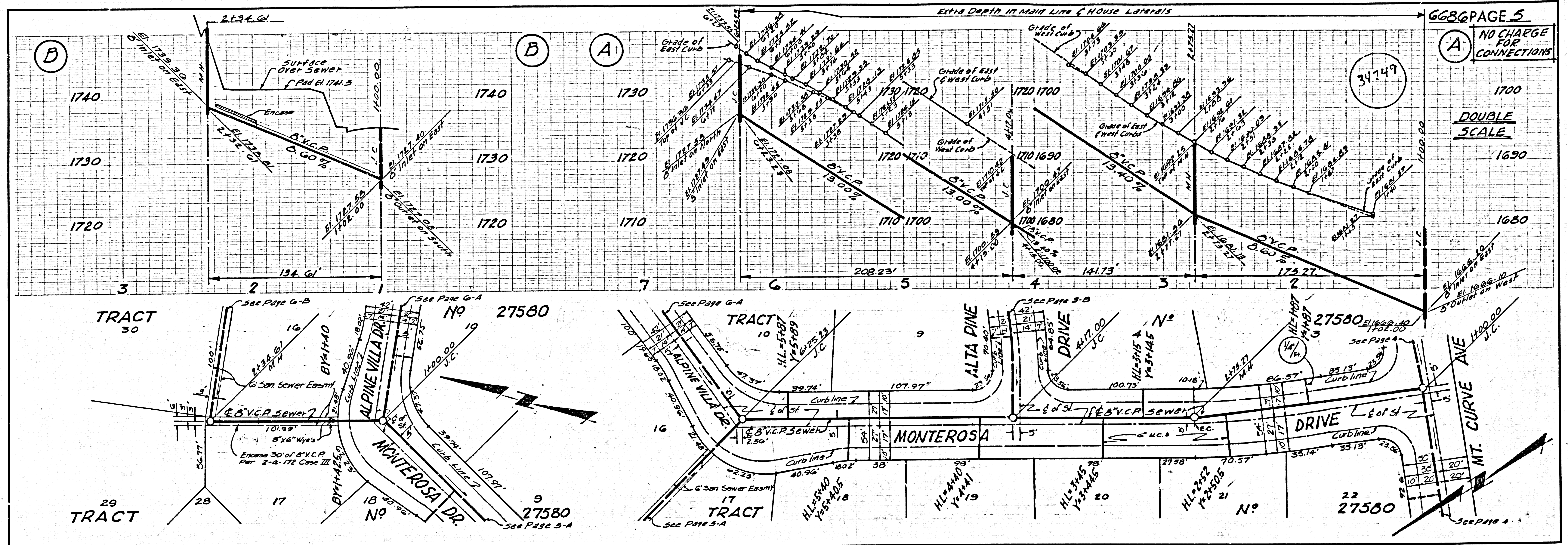


NO CHARGE FOR CONNECTIONS

DOUBLE SCALE

34748



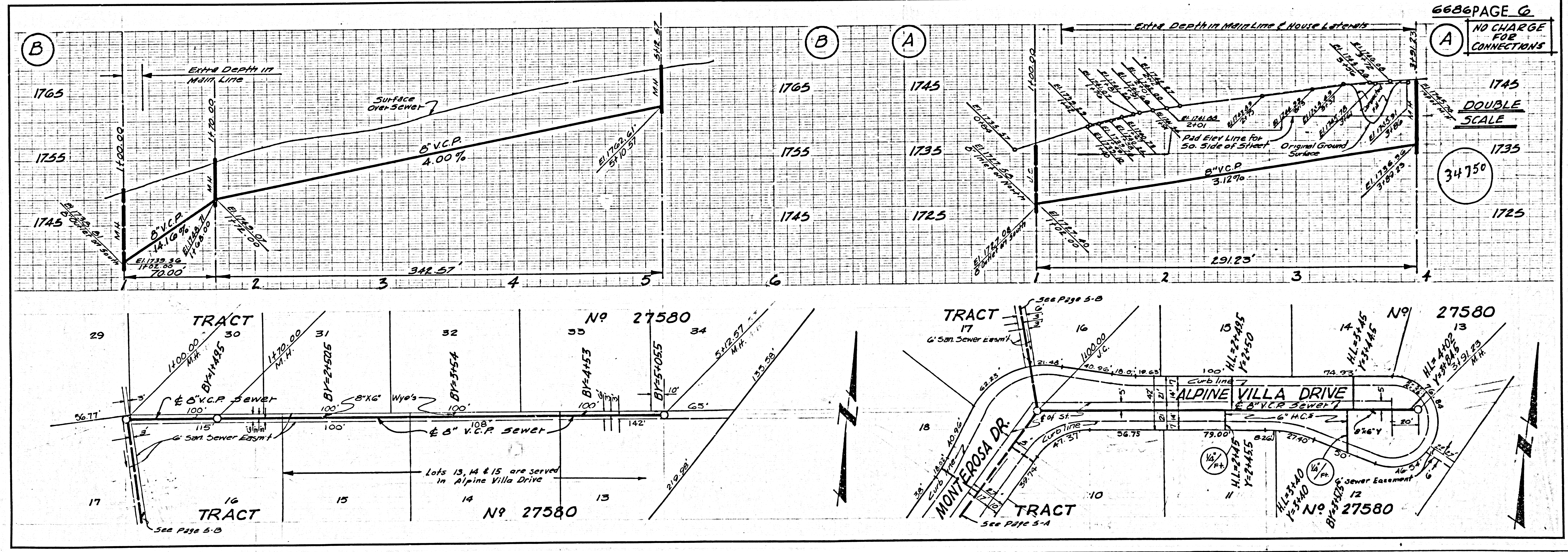


6686 PAGE 5

NO CHARGE FOR CONNECTIONS

DOUBLE SCALE

11-1-11 160-000



6686 PAGE 6

NO CHARGE FOR CONNECTIONS

DOUBLE SCALE