

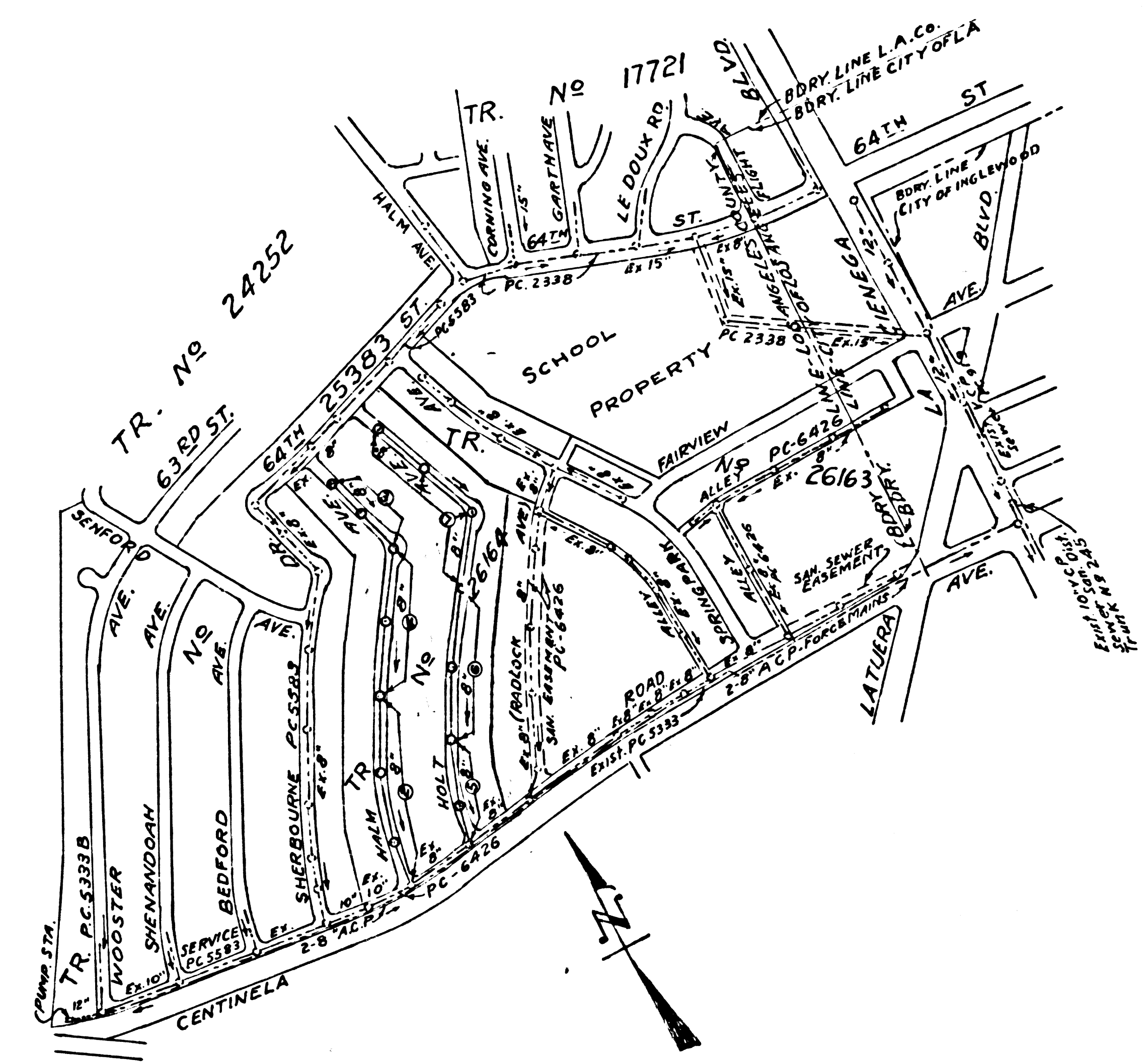
B.M. 29-8 ELEV. 125.403 = 1961 Adj.
 (FREEMAN BLVD) NOW L.A. CIEN. GA. BLVD. AND
 GENTINELA AVE. AT CENTER OF INTERSECTION
 SET IN A WELL PROTECTED BY CAST IRON COVER
 MARKED CITY OF LOS ANGELES MONUMENT.
 ENGINEERING A 3/4 HEXAGON BAR FB 131-1B3
 QUAD. 19

B.M. L.A.I. Company FB 263 Pg. 3 Elev. 135.75
 Chisled Knob, E. Curb Corning Ave. N.E. Return
 East 1/2 Street and Corning Ave.

B.M. L.A.I. Company FB 263 Pg. 6 Elev. 41.03
 Jct. Set in lead No. T.C. Centinela Ave.
 East 1/2 Street and Corning Ave.

NOTE:
 Old L.A. City Datum - Add 5.575 for Road Department.
 Old L.A. City Datum - Add 5.175 for U.S.C. & G.S. Sea Level
 Datum of 1929.
 ADD 5.03 TO L.A.I. DATUM TO COUNTY RD. DEPT.

ISSUE NO HOUSE CONNECTION
 PERMITS. CALL CENTRAL OFFICE
 FOR PUMP STATION CAPACITY



P.C. NO. 6708
 SCALE 1" = 600'
 TRACT NO. 26164
 NOTE: NUMBERS IN CIRCLES INDICATE PAGE NUMBER

DOUBLE SCALE
 LENNOX BLDG. DIST. NO. 7

PROFILE ALIGNMENT AND GRADE OF
 SANITARY SEWERS P.C. 6708
 PAGE 1

TO BE CONSTRUCTED IN
 TRACT NO. 26164
 PRIVATE CONTRACT NO. 6708

W.S. 24
 4 SHEETS, 7 PAGES
 SCALE: VERT. 1" = 8'
 HORIZ. 1" = 40'
 SEPTEMBER, 1963
 PREPARED IN THE OFFICES OF
 LOS ANGELES INVESTMENT CO.

By: *William H. Keller*
 REG. C. E. NO. 5843
 FOR LEGEND SEE PLAN NO. S-64

- NOTES:
1. PROVIDE STAKES ON THE PROPERTY LINE OR PROPERTY LINES PRODUCED AT RIGHT ANGLES TO THE SEWER LINE AT THE CENTER LINE OF EACH MANHOLE.
 2. NO REPRESENTATIVE OF THE COUNTY ENGINEER WILL SURVEY OR LAY OUT ANY PORTION OF THE WORK.
 3. THE PRIVATE ENGINEER SHALL FURNISH THE COUNTY ENGINEER WITH GRADE SHEETS AND STATIONING FOR ALL HOUSE LATERALS AND Y BRANCHES AND SHALL PROVIDE STAKES FOR THEM AT THEIR PROPER LOCATIONS WITH STATIONING PLAINLY MARKED. ALL HOUSE LATERALS SHALL BE CONSTRUCTED IN A STRAIGHT ALIGNMENT AT RIGHT ANGLES FROM THE MAIN LINE SEWER EXCEPT AS SHOWN ON THE PLANS. HOUSE LATERALS FROM CHIMNEYS SHALL NOT HAVE AN ANGLE OF LESS THAN 45° WITH THE MAIN LINE SEWER. ANY CHANGE IN ALIGNMENT SHALL BE REQUESTED IN WRITING BY THE PRIVATE ENGINEER.
 4. THE PRIVATE ENGINEER SHALL FURNISH THE HOUSE LATERAL DEPTH AT THE PROPERTY LINE BELOW THE TOP OF CURB ELEVATION FOR EACH HOUSE LATERAL ON THE GRADE SHEET.
 5. NO REVISIONS SHALL BE MADE IN THESE PLANS WITHOUT THE APPROVAL OF THE COUNTY ENGINEER.
 6. THE CONTRACTOR SHALL NOTIFY THE CONSTRUCTION DIVISION BY TELEPHONE, MADISON 9 4747, EXT. 81331, AT LEAST TWENTY FOUR HOURS BEFORE STARTING ANY WORK UNDER THIS CONTRACT.
 7. MANHOLES SHALL BE BRICK SEWER STRUCTURES PER S-104 PRECAST CONCRETE MANHOLES PER S-135 OR S-173 MAY BE USED AS AN ALTERNATE IN LOCATIONS APPROVED BY THE COUNTY ENGINEER.
 8. USE STANDARD MANHOLE FRAMES AND COVERS, S-117.
 9. MANHOLE TOPS IN UNIMPROVED RIGHTS OF WAY TO BE SIX INCHES ABOVE FINISHED GRADE.
 10. USE EXTRA STRENGTH PIPE. ALL PIPE IS STANDARD DEPTH EXCEPT AS NOTED.
 11. USE MECHANICAL COMPRESSION JOINTS FOR ALL V.C.P. JOINTS PER SPECS. SECS. 36 & 48 & 49.
 12. ALL STATE AND LOCAL TRENCH SAFETY ORDERS WILL BE RIGIDLY ENFORCED.
 13. IF A POWER POLE IS WITHIN THREE FEET OF THE SEWER, THE SEWER SHALL BE ENCASED, PER S-172, CASE III, TWO FEET ON EACH SIDE FROM THE POINT OF INTERFERENCE.
 14. IF DURING THE COURSE OF CONSTRUCTION IT IS DETERMINED THAT THERE IS LESS THAN FOUR FEET OF COVER OVER THE TOP OF A MAIN LINE OR HOUSE LATERAL V.C.P. SEWER WHICH IS NOT INDICATED ON THE PLANS, THE PIPE SHALL BE ENCASED PER S-172, CASE III, UNLESS OTHERWISE APPROVED BY THE COUNTY ENGINEER.
 15. HOUSE LATERALS TO BE CONSTRUCTED WITH INVERTS AT PROPERTY LINE... 6" FEET BELOW CURB GRADE.
 16. RESURFACE ALL TRENCHES WITHIN PAVED AREAS TO MEET L.A. COUNTY ROAD DEPT. OR CALIFORNIA STATE HIGHWAY REQUIREMENTS IN ACCORDANCE WITH PERMITS.
 17. FOR ALLOWABLE LEAKAGE TEST USE FORMULA NO. 2, SPECS. SEC. 54.

NOTE:
 ISSUE NO HOUSE CONNECTION PERMITS UNTIL
 P.C. 6708 HAS BEEN ACCEPTED

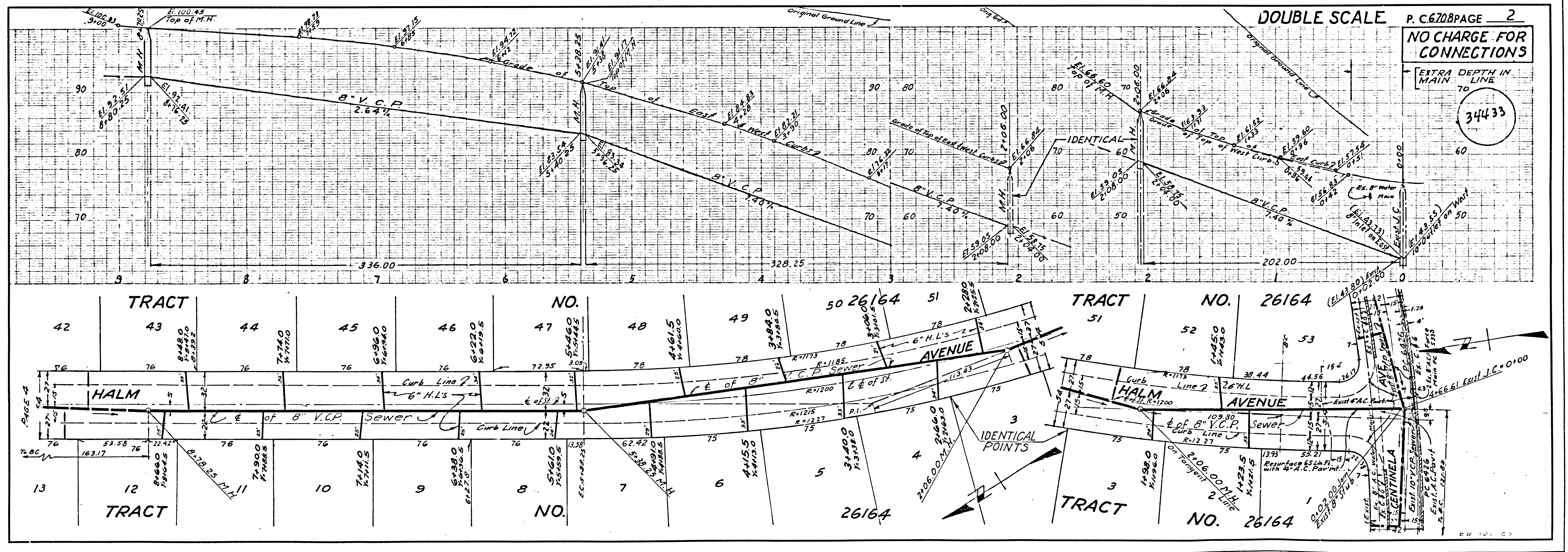
NO CONNECTIONS FOR THE DISPOSAL OF
 INDUSTRIAL WASTES SHALL BE MADE TO
 SEWERS SHOWN ON THESE DRAWINGS
 WITHOUT WRITTEN PERMISSION FROM THE
 CHIEF ENGINEER AND GENERAL MANAGER
 OF THE COUNTY SANITATION DISTRICTS.

COLLECT CHARGES
 AS INDICATED
C. Yama

NOTE:
 GRADES TO WHICH THIS IMPROVEMENT IS TO BE CONSTRUCTED ARE SHOWN ON PLANS AND PROFILES. GRADE POINTS FOR TOP OF CURBS, CENTER LINE OF STREETS, OR CENTER LINE OF ALLEYS ARE SHOWN BY CIRCLES ON PROFILES. AT ALL POINTS BETWEEN DESIGNATED POINTS THE GRADE SHALL BE ESTABLISHED SO AS TO CONFORM TO A STRAIGHT LINE BETWEEN SAID DESIGNATED POINTS. ELEVATIONS ARE IN FEET ABOVE U.S.C. & G.S. SEA LEVEL DATUM OF 1929. THIS DRAWING AND THE DATA HEREON ARE HEREBY MADE A PART OF THE SPECIFICATIONS. WORK SHALL BE CONSTRUCTED ACCORDING TO STANDARD SPECIFICATIONS DATED MAY 25, 1962 ON FILE IN THE OFFICE OF THE COUNTY ENGINEER AND SHALL BE PROSECUTED ONLY IN THE PRESENCE OF THE COUNTY ENGINEER. BEFORE WORK CAN BE STARTED, THE CONTRACTOR MUST OBTAIN A PERMIT TO EXCAVATE IN COUNTY STREETS FROM THE L.A. COUNTY ROAD DEPT., DISTRICT OFFICE NO. 3 AND PAY A FEE TO THE COUNTY ENGINEER, ROOM 300, COUNTY ENGINEERING BUILDING, 100 WEST SECOND STREET OR PHOENIX VERDE - CENTINELA VALLEY... REGIONAL OFFICE, SUFFICIENT TO COVER THE COST OF CONSTRUCTION INSPECTION AND RECORD PLANS. APPROVAL OF THIS PLAN BY THE COUNTY OF LOS ANGELES DOES NOT CONSTITUTE A REPRESENTATION AS TO THE ACCURACY OF THE LOCATION OF OR THE EXISTENCE OR NON-EXISTENCE OF ANY UNDERGROUND UTILITY PIPE, OR STRUCTURE WITHIN THE LIMITS OF THIS PROJECT. THIS NOTE APPLIES TO ALL PAGES. IF WORK IS TO BE DONE BY A STATE HIGHWAY, A PERMIT MUST BE OBTAINED FROM THE STATE OF CALIFORNIA, DIVISION OF HIGHWAYS, 180 SOUTH SPRING STREET, LOS ANGELES, CALIFORNIA.

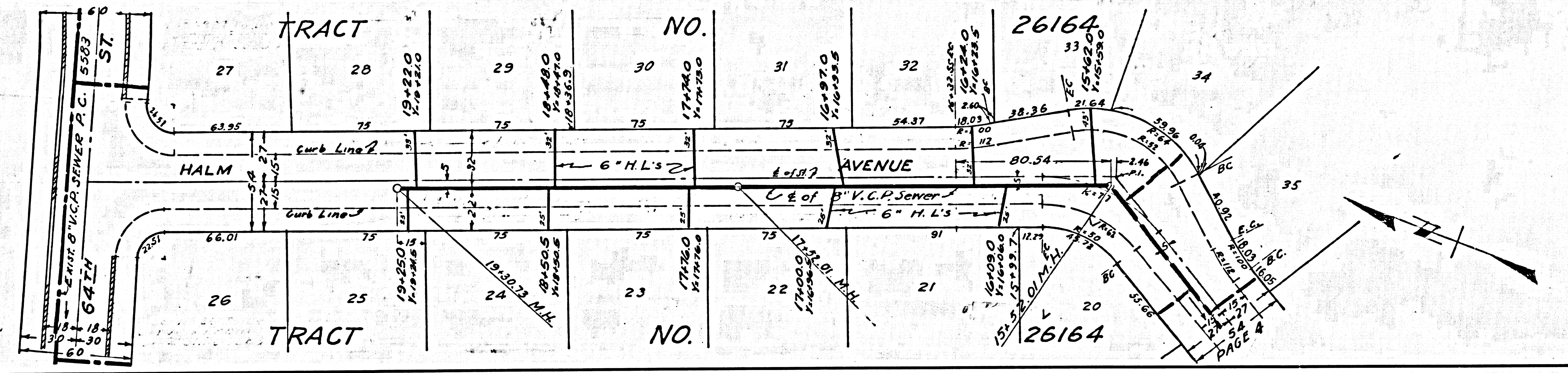
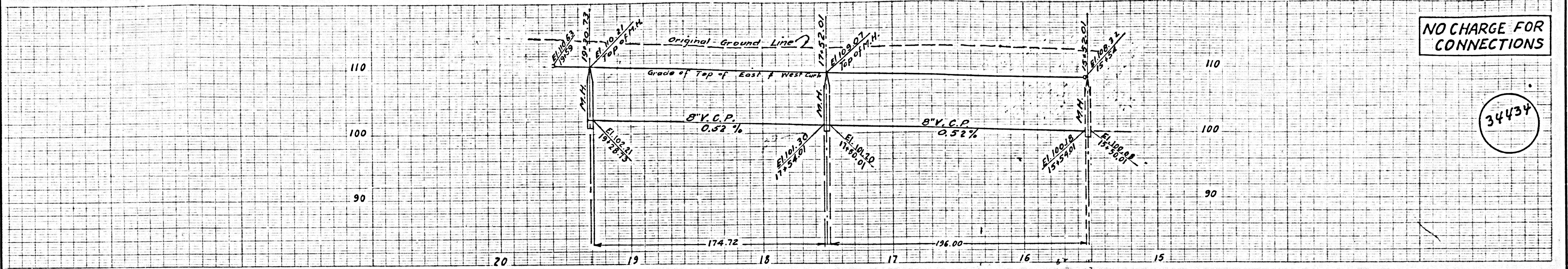
COUNTY OF LOS ANGELES, CALIFORNIA
 JOHN A. LAMBIE, COUNTY ENGINEER J. D. PARKHURST, CHIEF ENGINEER
 CO. SAN. DIST. NO. 5
 APPROVED BY: *Ralph Schaefer* ASSISTANT SANITATION ENGINEER APPROVED BY: *Northwestern* OFFICE ENGINEER
 SUBMITTED BY: *Ralph Schaefer*
 FOR THE CONTRACTOR
 CHECKED BY: *Stu Duda* 12-3-63
 REG. C. E. NO. 2464

J.N. 0361.42



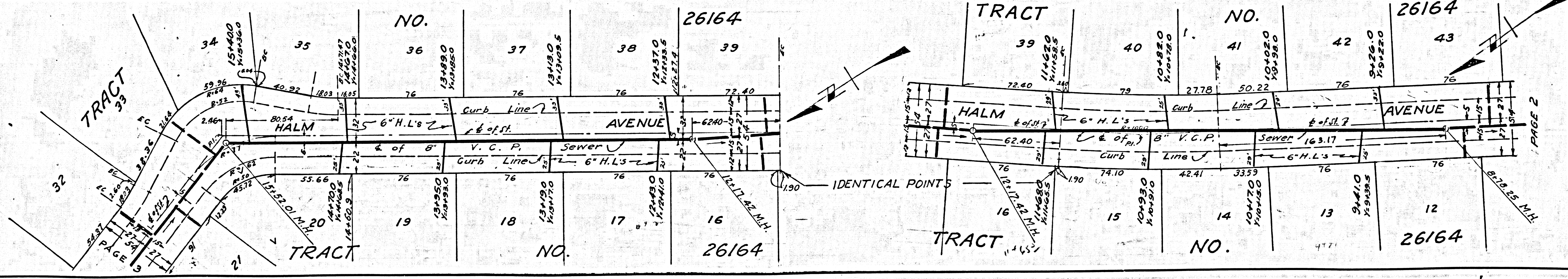
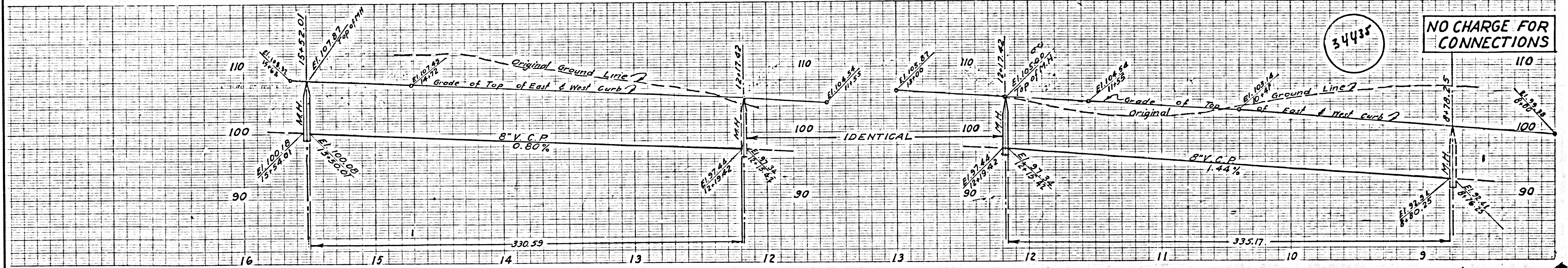
NO CHARGE FOR CONNECTIONS

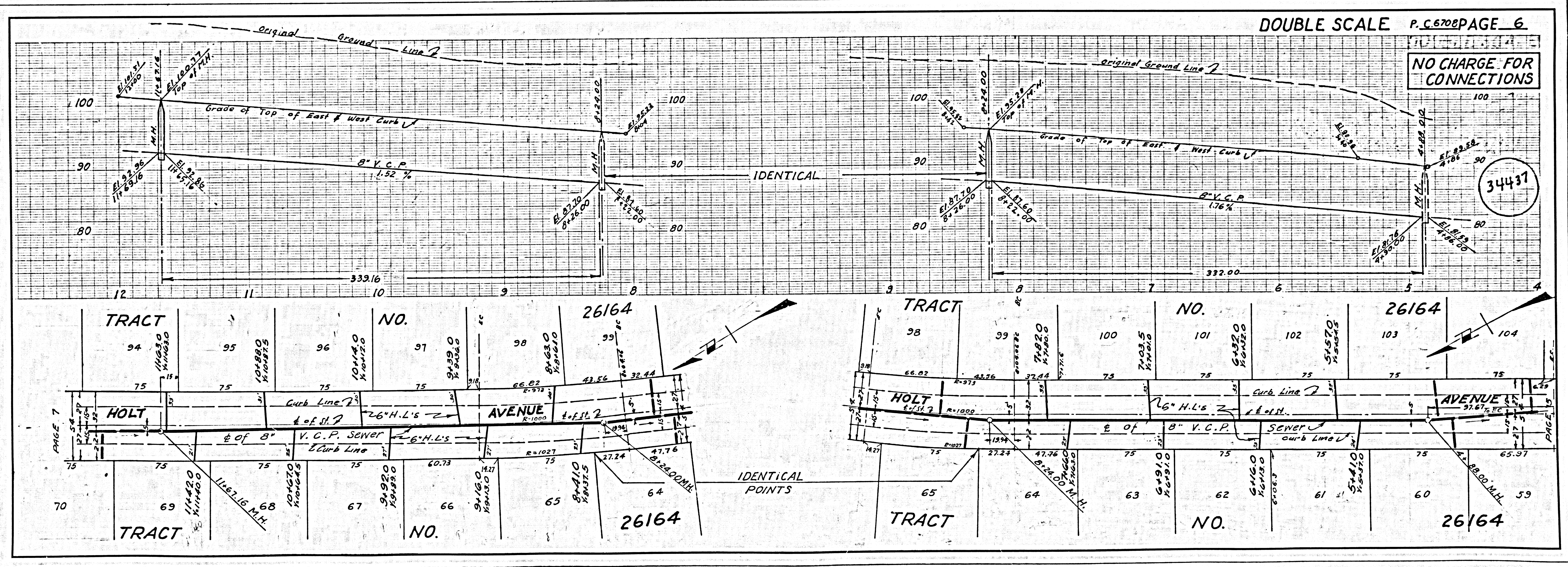
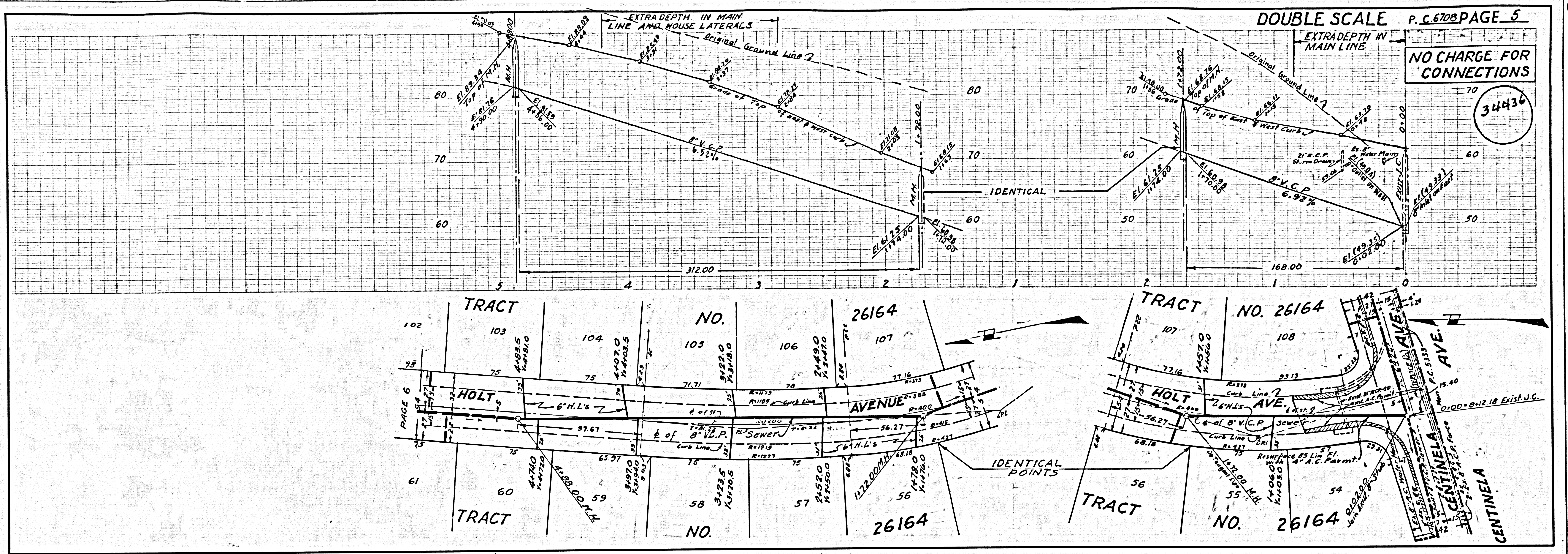
34434



NO CHARGE FOR CONNECTIONS

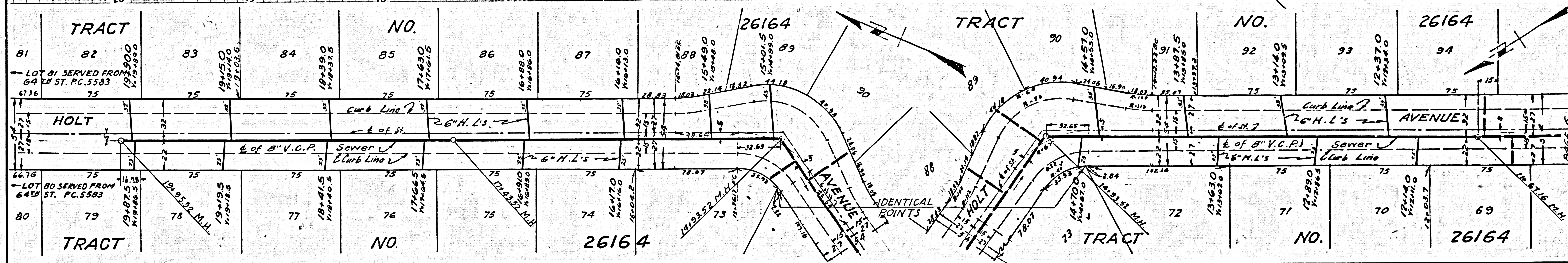
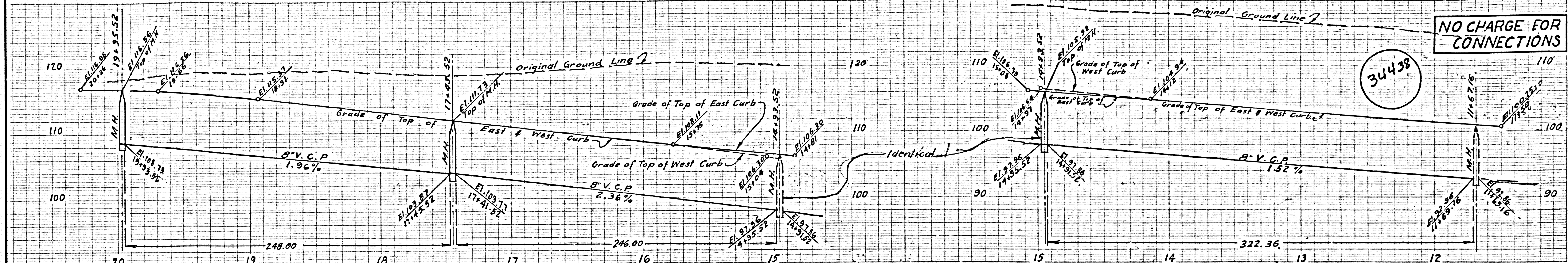
34435





NO CHARGE FOR CONNECTIONS

34438



BOYD & SONS CIVIL ENGINEERS