

B.M. SY-3064 ELEV. 62.282
 Los Angeles City Engineers Monument On Centerline
 Of Normandie Avenue At B.C. Opposite South Property
 Line Of 24'x50' Normandie Ave. 2' 18" South Of
 A.T. & S.F. R.R. Overpass, 3 Miles South Sepulveda Blvd.
 LOMITA QUAD. 19 55

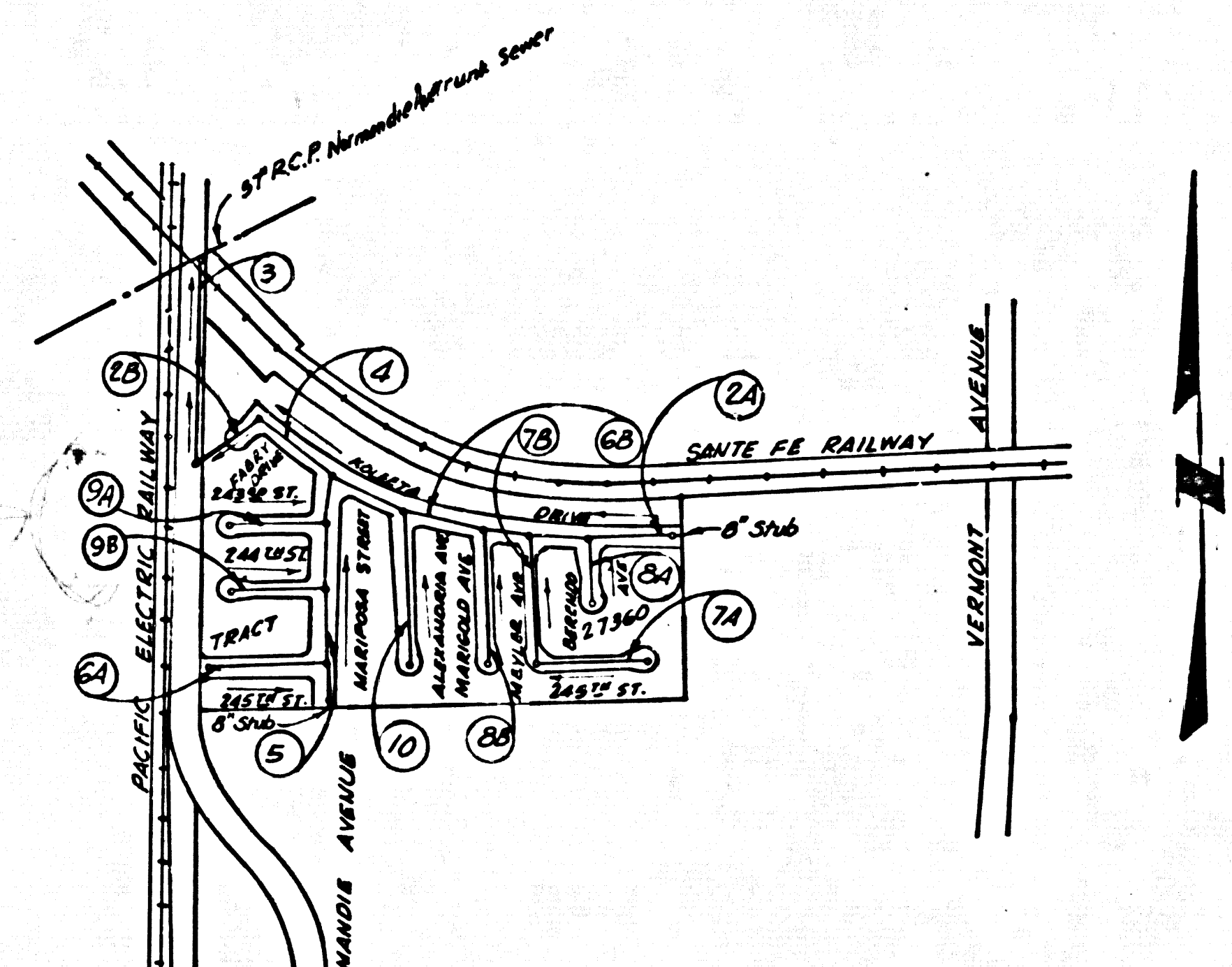
LOMITA BLDG. DIST. NO. 12

PROFILE ALIGNMENT AND GRADE OF P.C. 6731
 SANITARY SEWERS PAGE 1
 TO BE CONSTRUCTED IN
 TRACT NO. 27360

PRIVATE CONTRACT NO. 6731

W.S. 28
 5 SHEETS, 10 PAGES
 SCALE: VERT. 1"=4' HORIZ. 1"=40' AUGUST, 1963
 PREPARED IN THE OFFICES OF
 PACIFIC-WESTERN ENGINEERING CORP.
 1825 West Lomita Boulevard, S.A. 5-7552
 Lomita, California
 By: *David H. Smith*
 REG. C. E. NO. 13787

36350



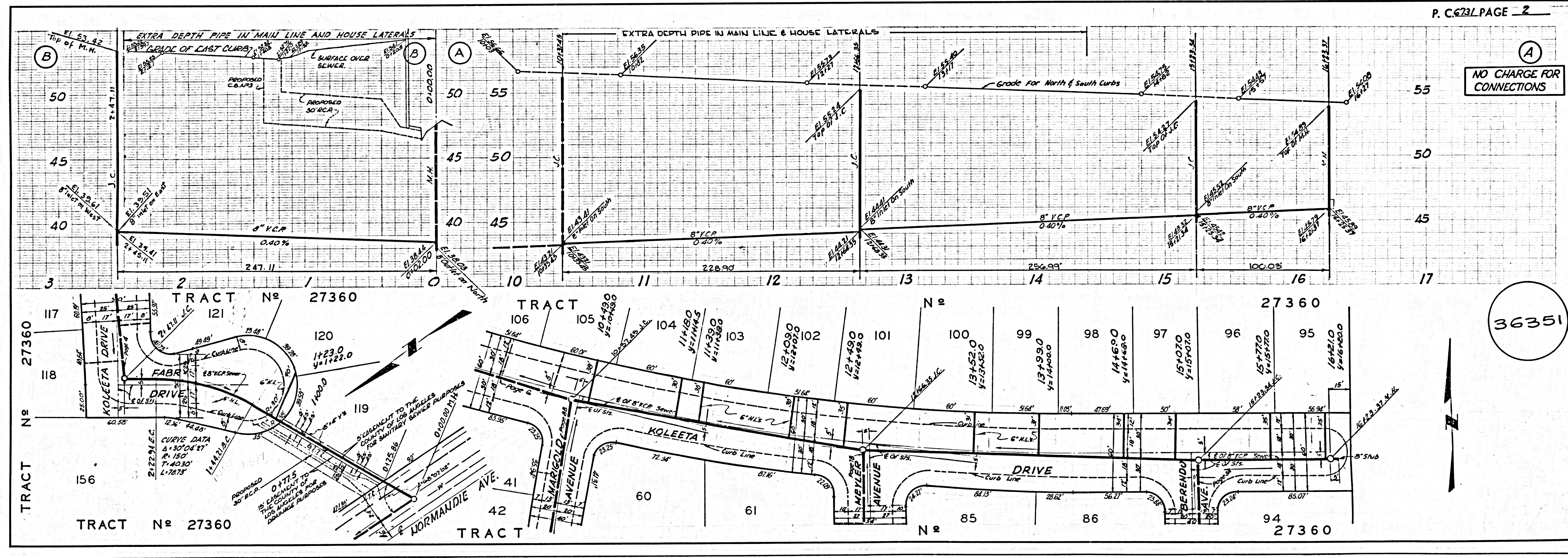
- NOTES:
1. PROVIDE STAKES ON THE PROPERTY LINE OR PROPERTY LINES PRODUCED AT RIGHT ANGLES TO THE SEWER LINE AT THE CENTER LINE OF EACH MANHOLE.
 2. NO REPRESENTATIVE OF THE COUNTY ENGINEER WILL SURVEY OR LAY OUT ANY PORTION OF THE WORK.
 3. THE PRIVATE ENGINEER SHALL FURNISH THE COUNTY ENGINEER WITH GRADE SHEETS AND STATIONING FOR ALL HOUSE LATERALS AND Y BRANCHES AND SHALL PROVIDE STAKES FOR THEM AT THEIR PROPER LOCATIONS WITH STATIONING PLAINLY MARKED. ALL HOUSE LATERALS SHALL BE CONSTRUCTED IN A STRAIGHT ALIGNMENT AT RIGHT ANGLES FROM THE MAIN LINE SEWER EXCEPT AS SHOWN ON THE PLANS. HOUSE LATERALS FROM CHIMNEYS SHALL NOT HAVE AN ANGLE OF LESS THAN 45° WITH THE MAIN LINE SEWER. ANY CHANGE IN ALIGNMENT SHALL BE REQUESTED IN WRITING BY THE PRIVATE ENGINEER.
 4. THE PRIVATE ENGINEER SHALL FURNISH THE HOUSE LATERAL DEPTH AT THE PROPERTY LINE BELOW THE TOP OF CURB ELEVATION FOR EACH HOUSE LATERAL ON THE GRADE SHEET.
 5. NO REVISIONS SHALL BE MADE IN THESE PLANS WITHOUT THE APPROVAL OF THE COUNTY ENGINEER.
 6. THE CONTRACTOR SHALL NOTIFY THE CONSTRUCTION DIVISION BY TELEPHONE, MADISON 9-4747, EXT. 8151, AT LEAST TWENTY-FOUR HOURS BEFORE STARTING ANY WORK UNDER THIS CONTRACT.
 7. MANHOLES SHALL BE REINFORCED STRUCTURES PER S-104 PRECAST CONCRETE MANHOLES PER S-133 OR S-173 MAY BE USED AS AN ALTERNATE IN LOCATIONS APPROVED BY THE COUNTY ENGINEER.
 8. USE STANDARD MANHOLE FRAMES AND COVERS, S-107, EXCEPT AS NOTED.
 9. MANHOLE TOPS IN UNIMPROVED RIGHTS-OF-WAY TO BE SIX INCHES ABOVE FINISHED GRADE.
 10. USE EXTRA STRENGTH PIPE, ALL PIPE IS STANDARD DEPTH EXCEPT AS NOTED.
 11. USE MECHANICAL COMPRESSION JOINTS FOR ALL V.C.P. JOINTS PER SPECS., SECS. 34 & 48, S-60.
 12. ALL STATE AND LOCAL TRENCH SAFETY ORDERS WILL BE RIGIDLY ENFORCED.
 13. IF A POWER POLE IS WITHIN THREE FEET OF THE SEWER, THE SEWER SHALL BE ENCASED, PER S-172, CASE III, TWO FEET ON EACH SIDE FROM THE POINT OF INTERFERENCE.
 14. IF DURING THE COURSE OF CONSTRUCTION IT IS DETERMINED THAT THERE IS LESS THAN FOUR FEET OF COVER OVER THE TOP OF A MAIN LINE OR HOUSE LATERAL V.C.P. SEWER WHICH IS NOT INDICATED ON THE PLANS, THE PIPE SHALL BE ENCASED PER S-172, CASE III, UNLESS OTHERWISE APPROVED BY THE COUNTY ENGINEER.
 15. HOUSE LATERALS TO BE CONSTRUCTED WITH INVERTS AT PROPERTY LINE, 6" FEET BELOW CURB GRADE.
 16. RESURFACE ALL TRENCHES WITHIN PAVED AREAS TO MEET L.A. COUNTY ROAD DEPT. OR CALIFORNIA STATE HIGHWAY REQUIREMENTS IN ACCORDANCE WITH PERMITS.
 17. FOR ALLOWABLE LEAKAGE TEST USE FORMULA NO. 1, SPECS., SEC. 54.

NOTE:
 GRADES TO WHICH THIS IMPROVEMENT IS TO BE CONSTRUCTED ARE SHOWN ON PLANS AND PROFILES. GRADE POINTS FOR TOP OF CURBS, CENTER LINE OF STREETS, OR CENTER LINE OF ALLEYS ARE SHOWN BY CIRCLES ON PROFILES AT ALL POINTS BETWEEN DESIGNATED POINTS THE GRADE SHALL BE ESTABLISHED SO AS TO CONFORM TO A STRAIGHT LINE DRAWN BETWEEN SAID DESIGNATED POINTS. ELEVATIONS ARE IN FEET ABOVE U.S.C. & G.S. SEA LEVEL DATUM OF 1929.
 THIS DRAWING AND THE DATA HEREON ARE HEREBY MADE A PART OF THE SPECIFICATIONS.
 WORK SHALL BE CONSTRUCTED ACCORDING TO STANDARD SPECIFICATIONS DATED MAR. 25, 1962, ON FILE IN THE OFFICE OF THE COUNTY ENGINEER AND SHALL BE PROSECUTED ONLY IN THE PRESENCE OF THE COUNTY ENGINEER.
 BEFORE WORK CAN BE STARTED, THE CONTRACTOR MUST OBTAIN A PERMIT TO EXCAVATE IN COUNTY STREETS FROM THE L.A. COUNTY ROAD DEPT., DISTRICT OFFICE NO. 3, AND PAY A FEE TO THE COUNTY ENGINEER, ROOM 300, COUNTY ENGINEERING BUILDING, 108 WEST SECOND STREET OR PALMS BRIDGES - GARDENIA VALLEY, REGIONAL OFFICE, SUFFICIENT TO COVER THE COST OF CONSTRUCTION INSPECTION AND RECORD PLANS.
 APPROVAL OF THIS PLAN BY THE COUNTY OF LOS ANGELES DOES NOT CONSTITUTE A REPRESENTATION AS TO THE ACCURACY OF THE LOCATION OF OR THE EXISTENCE OR NON-EXISTENCE OF ANY UNDERGROUND UTILITY PIPE, OR STRUCTURE WITHIN THE LIMITS OF THIS PROJECT. THIS NOTE APPLIES TO ALL PAGES.
 IF WORK IS TO BE DONE IN A STATE HIGHWAY, A PERMIT MUST BE OBTAINED FROM THE STATE OF CALIFORNIA, DIVISION OF HIGHWAYS, 126 SOUTH SPRING STREET, LOS ANGELES, CALIFORNIA.

COUNTY OF LOS ANGELES, CALIFORNIA
 JOHN A. LAMBIE, COUNTY ENGINEER
 J. D. PARKHURST, CHIEF ENGINEER
 CO. SAN. DIST. NO. 8
 APPROVED BY: *John A. Lambie*
 ASSISTANT SANITATION ENGINEER
 APPROVED BY: *J. D. Parkhurst*
 OFFICE ENGINEER
 SUBMITTED BY: *Jack C. Lansing*
 REGIONAL ENGINEER
 CHECKED BY: *Ralph Schaper*
 REG. C. E. NO. 13906

COLLECT CHARGES AS INDICATED
L. Curtis 4-22-64

REVISION	REVISION BY E.L. PEARSON & ASSOC. 343 HAWTHORNE WAY, HAWTHORNE, CALIF.	INDEX MAP Scale 1"=600' Tract No. 27360
7-22-64 Lot lines and H.L.'s by PACIFIC-WESTERN ENGR CORP. added lots & H.L.'s per revised tract map	10-27-64 CHANGE ALIGNMENT OF SEWER ON NORMANDIE AVE. PAGE 2 OF 5	
APPROVED <i>Jack C. Lansing</i>	APPROVED <i>Bernard J. Volarek</i>	

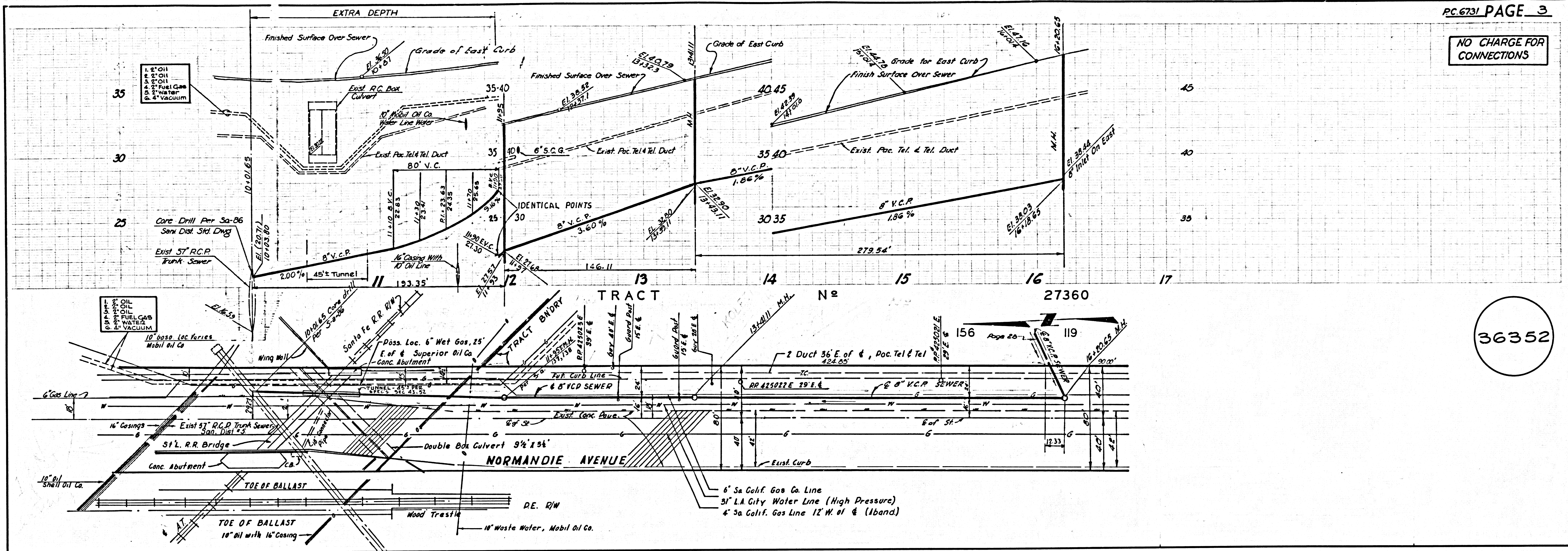


P.C. 6731 PAGE 2

NO CHARGE FOR CONNECTIONS

36351

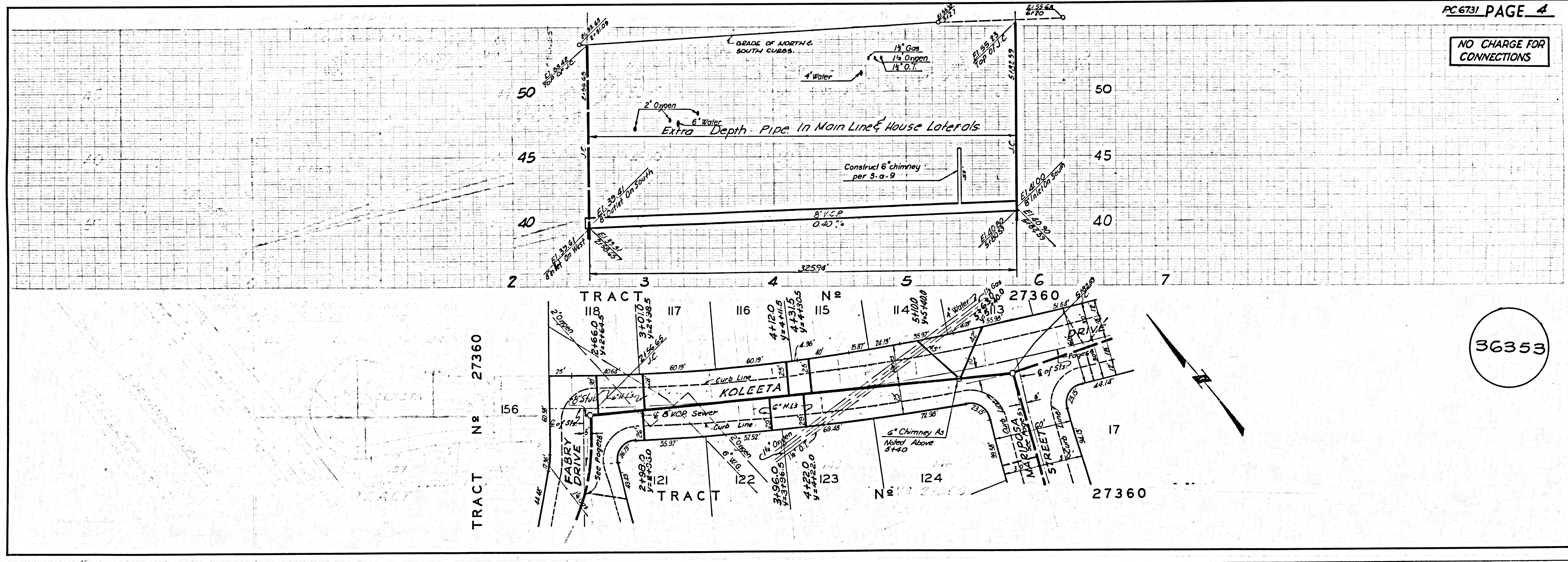
NO CHARGE FOR CONNECTIONS



36352

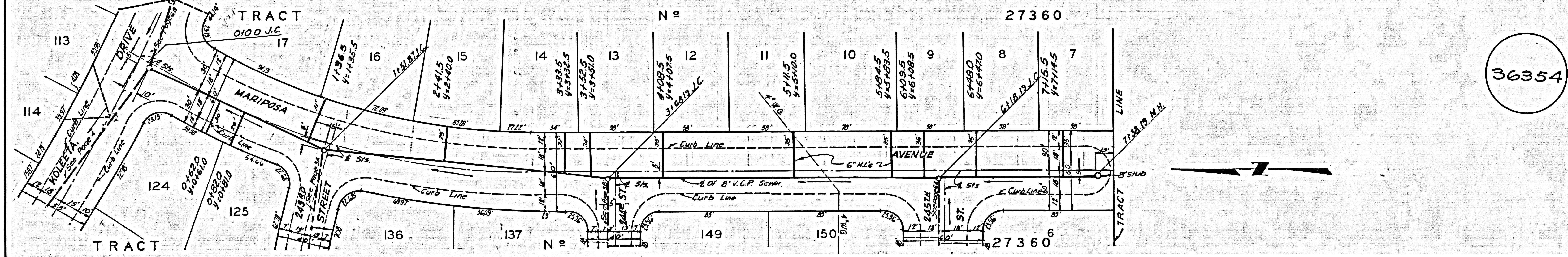
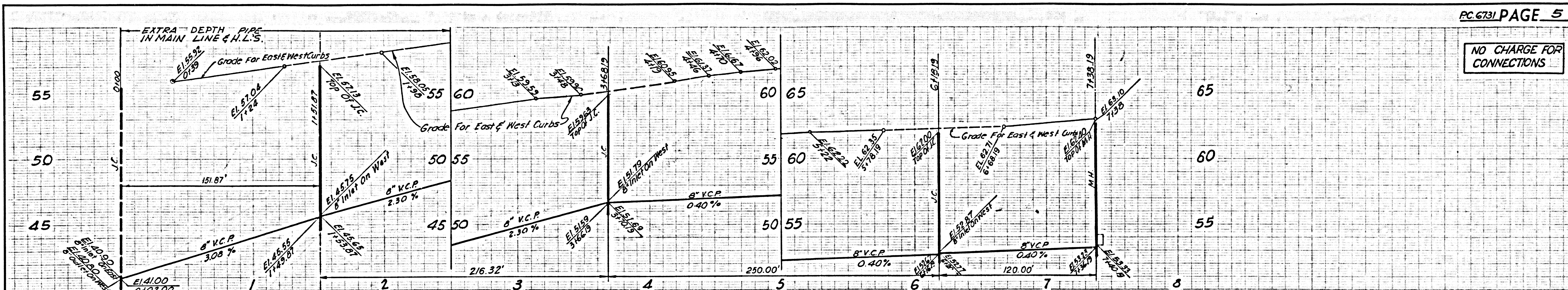
1870 29 0825 N TRACT

NO CHARGE FOR CONNECTIONS

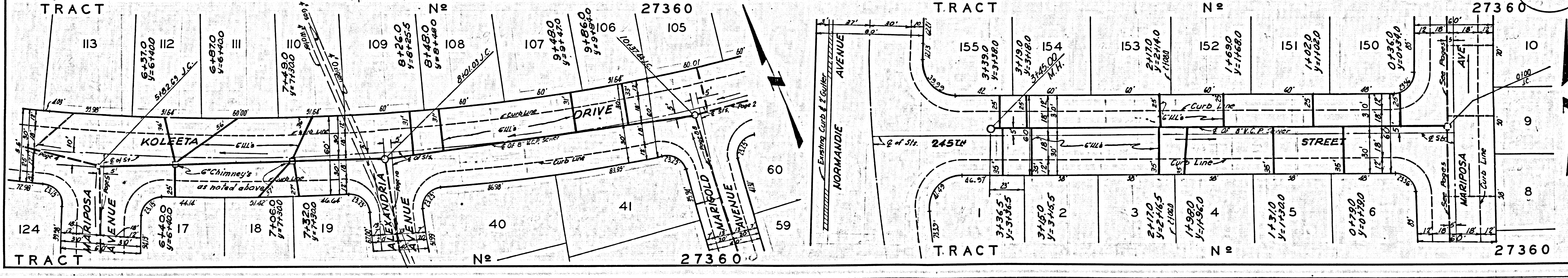
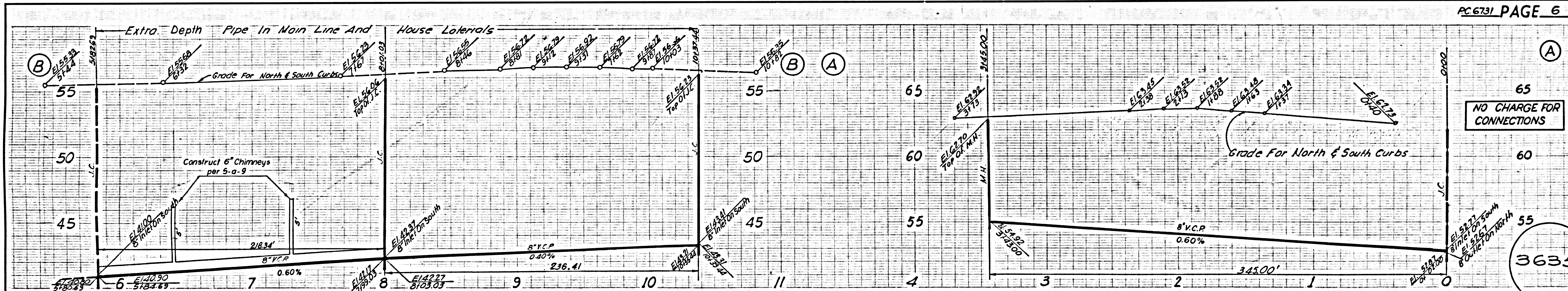


36353

NO CHARGE FOR CONNECTIONS

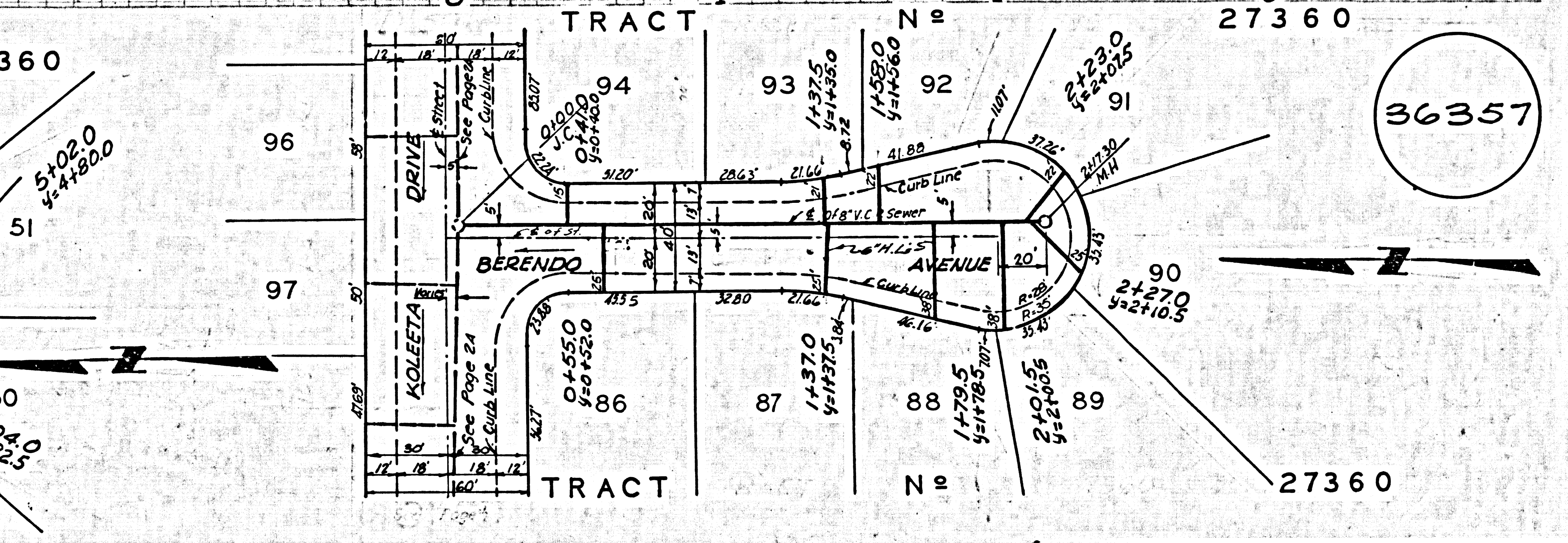
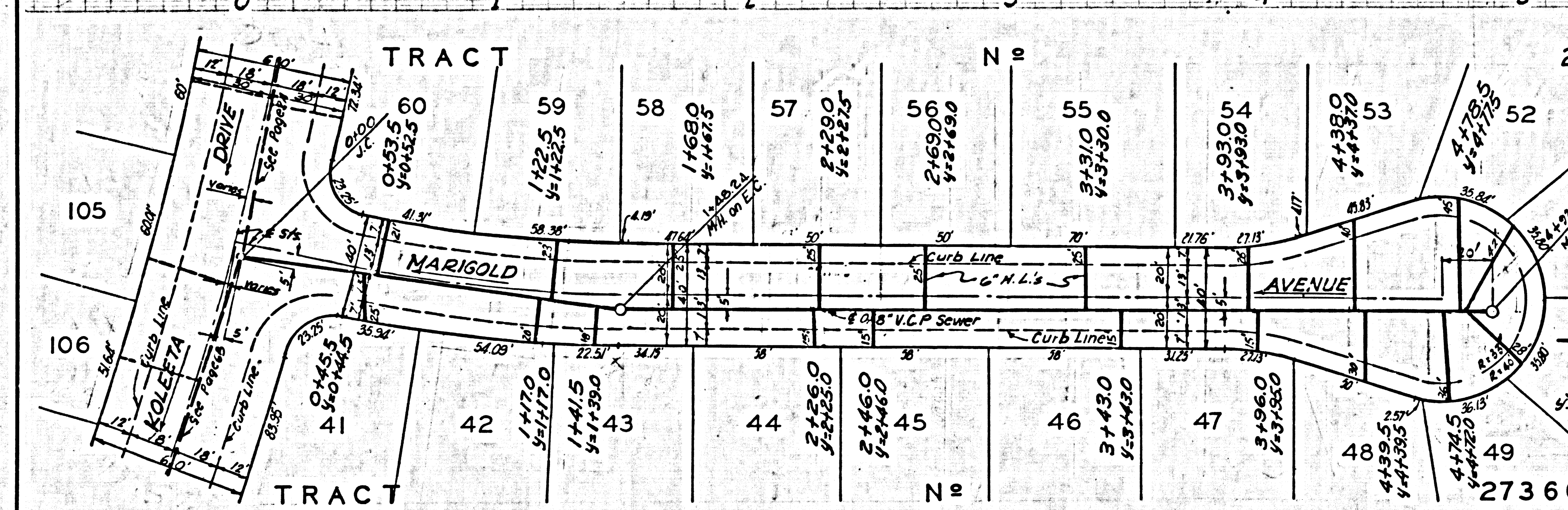
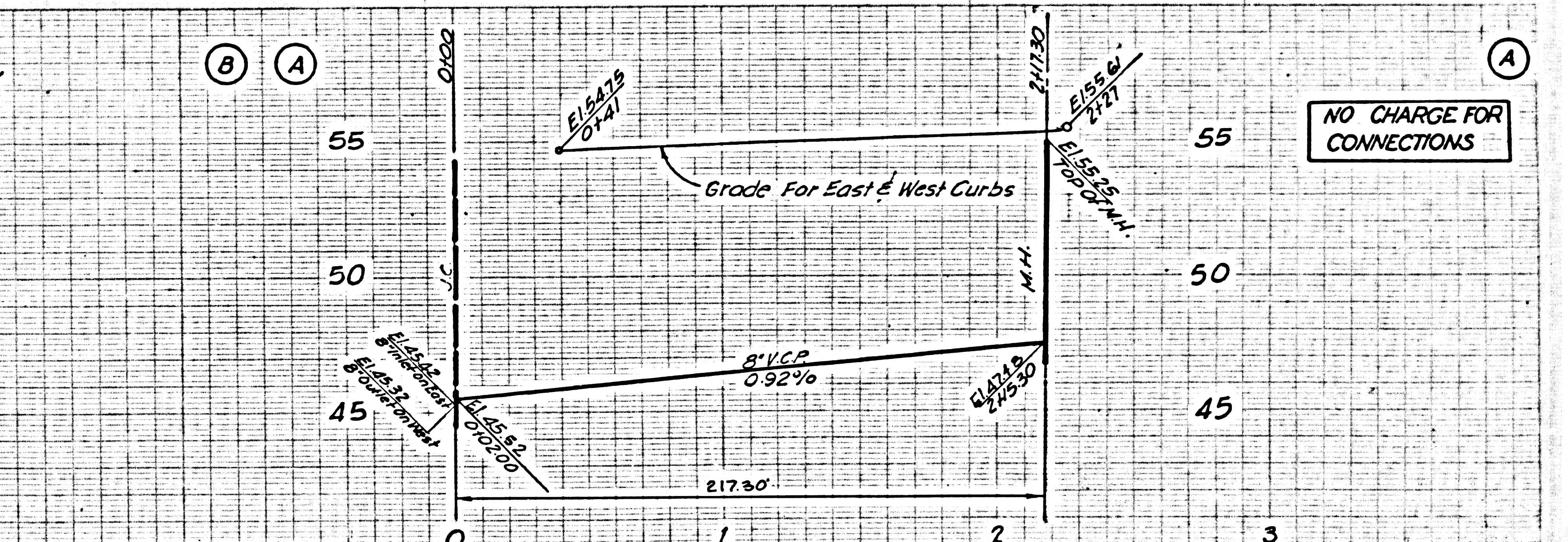
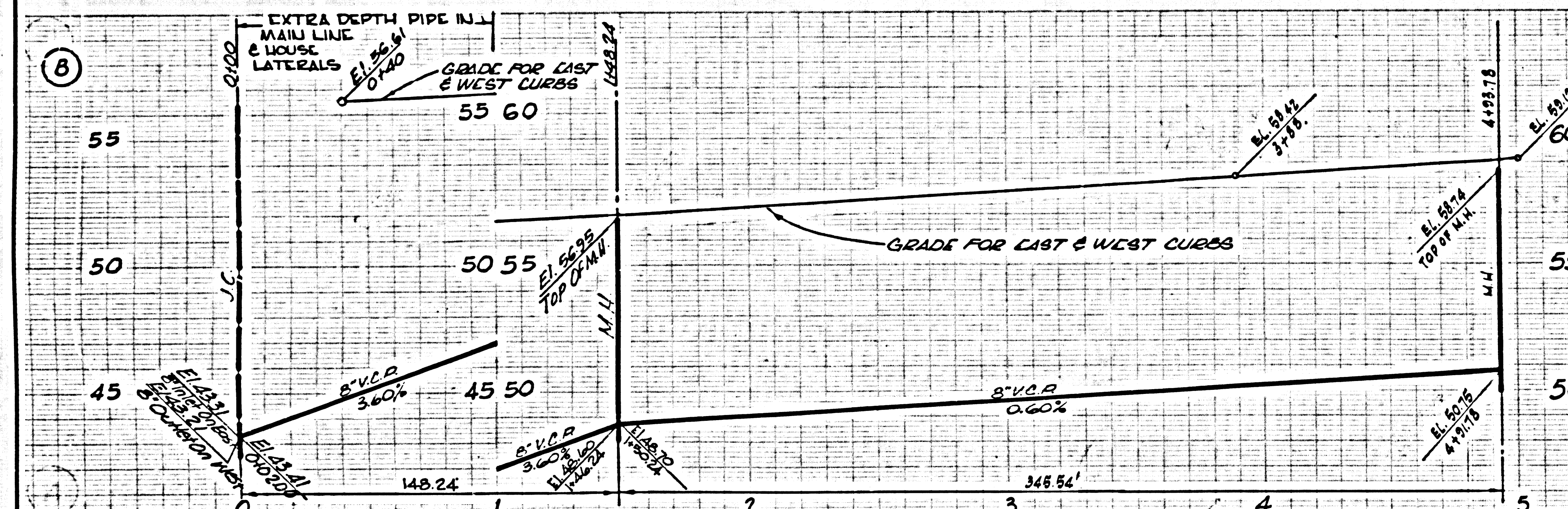
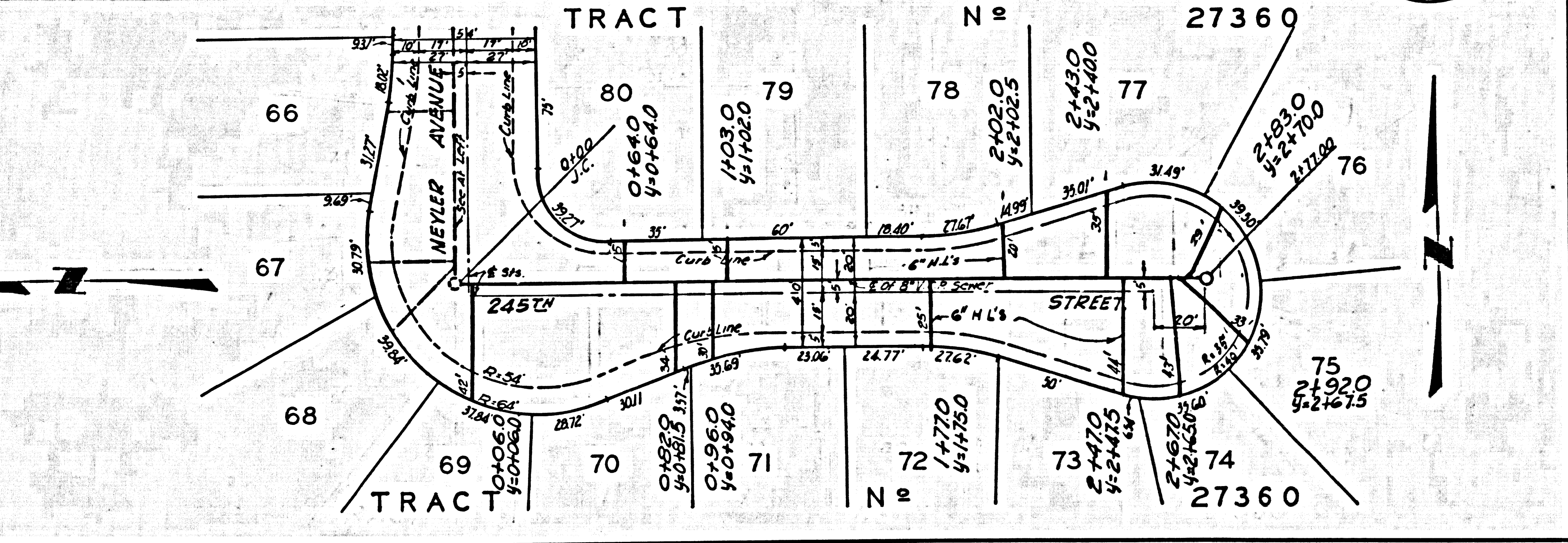
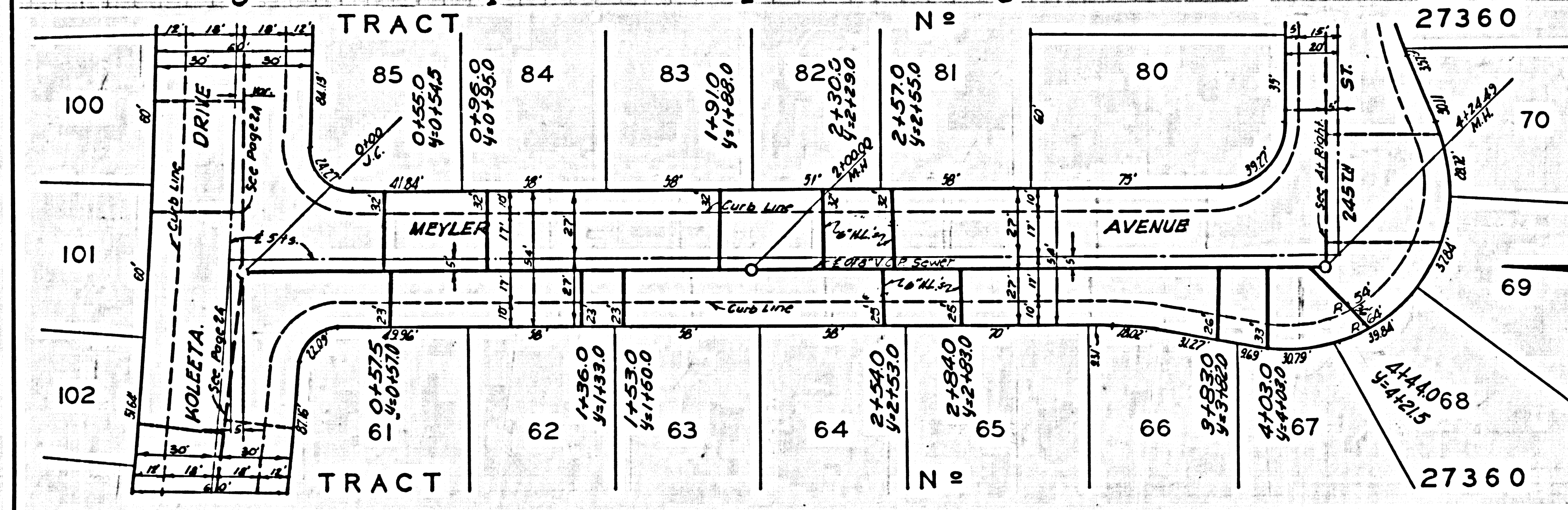
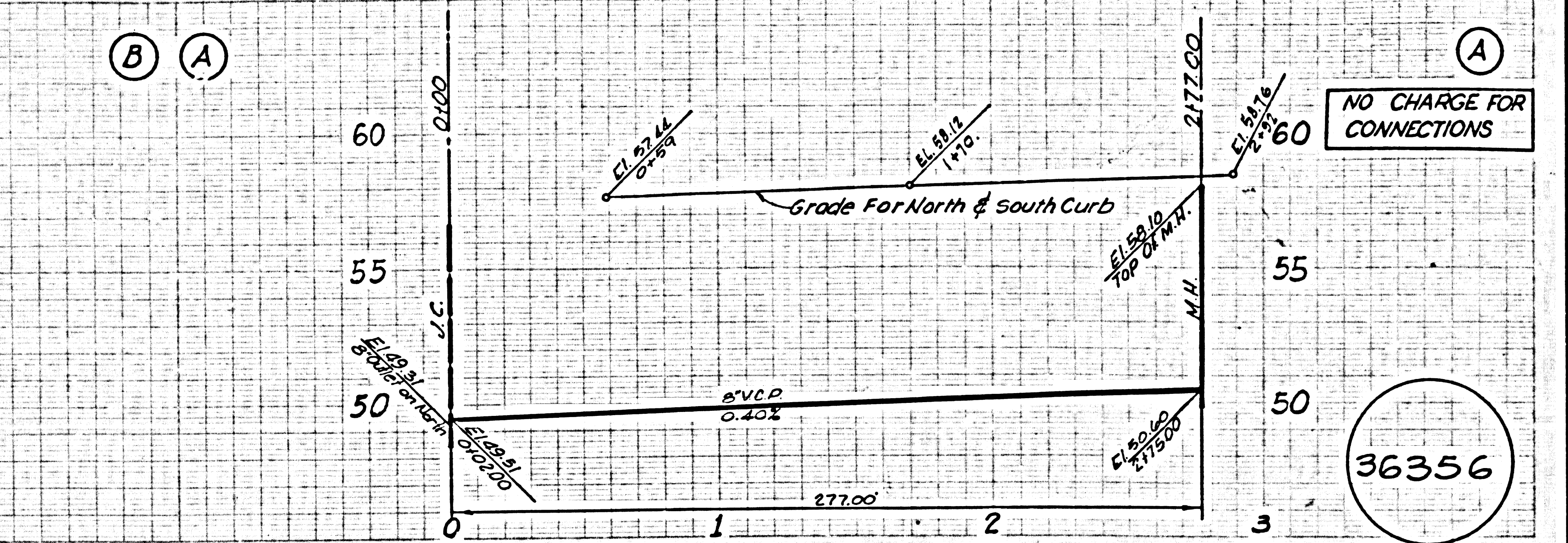
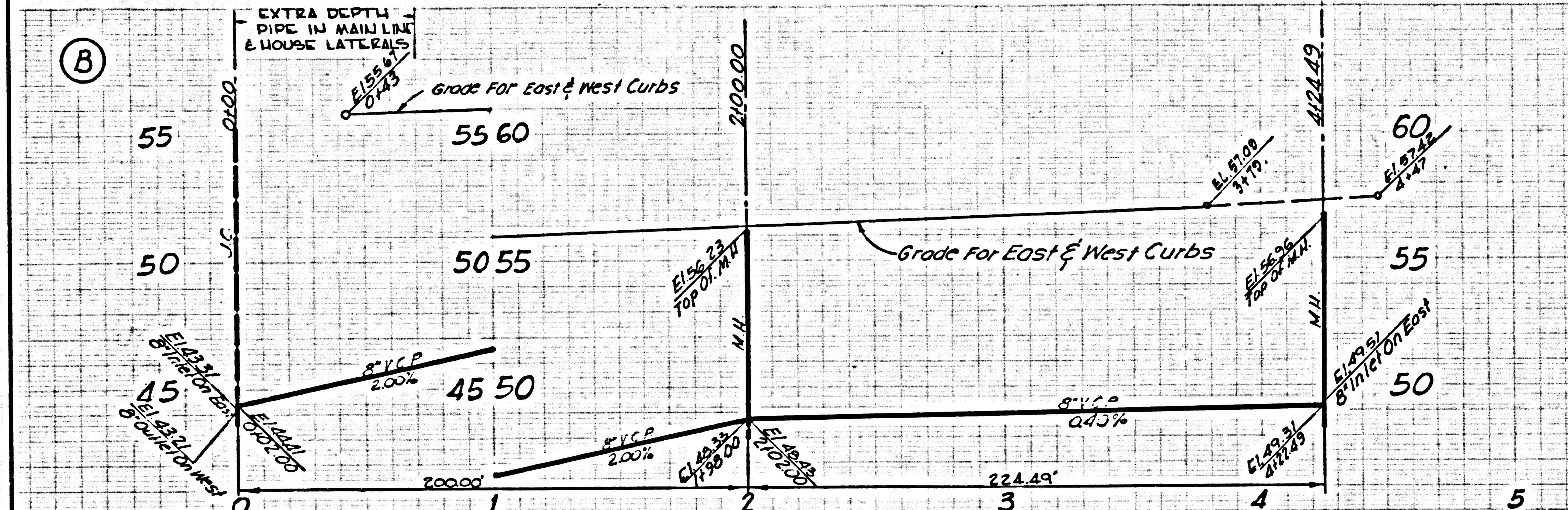


NO CHARGE FOR CONNECTIONS

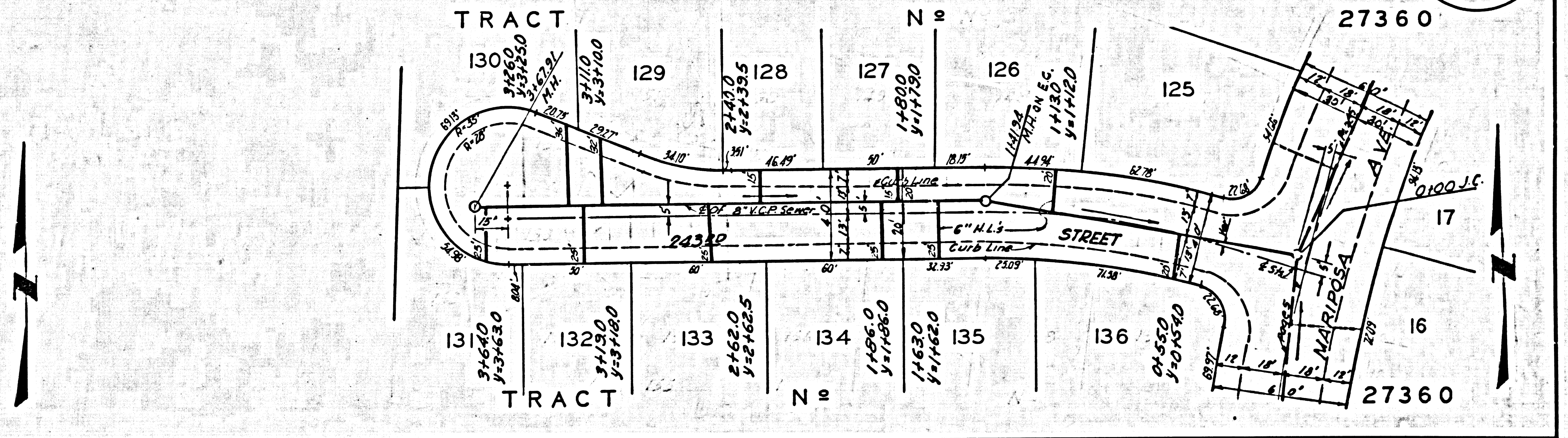
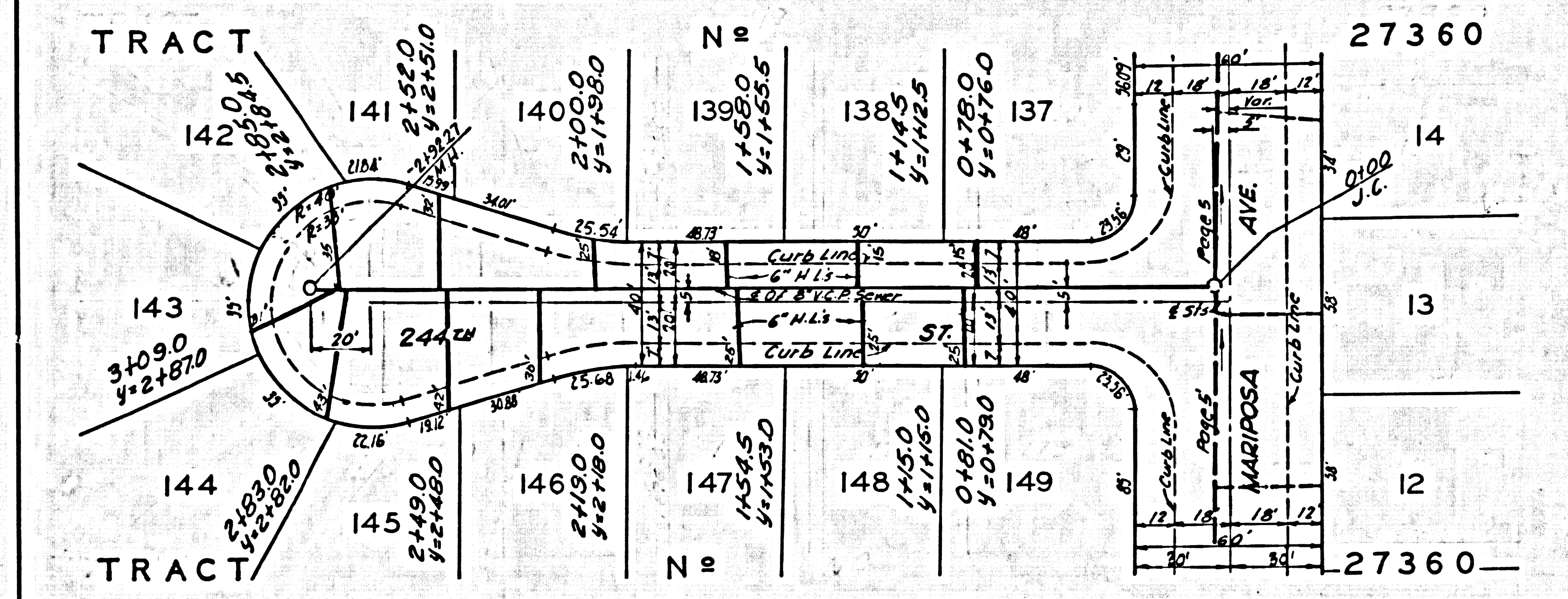
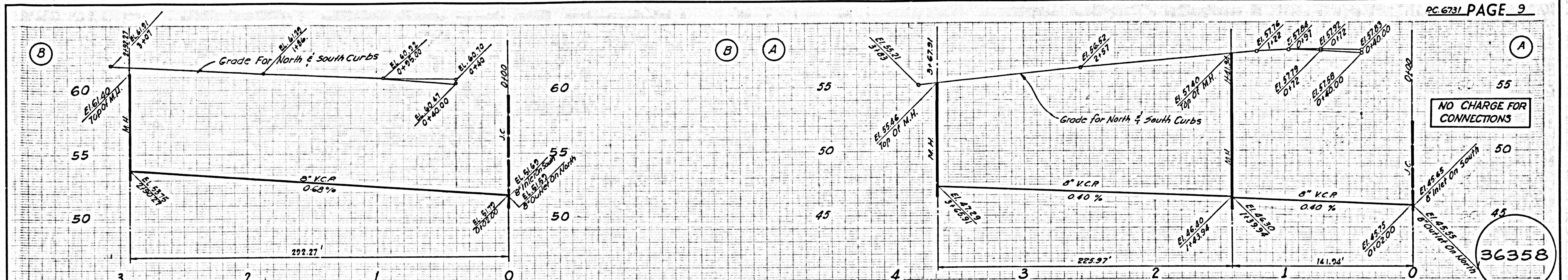


3

TRACT 29 PARTS IN TRACT

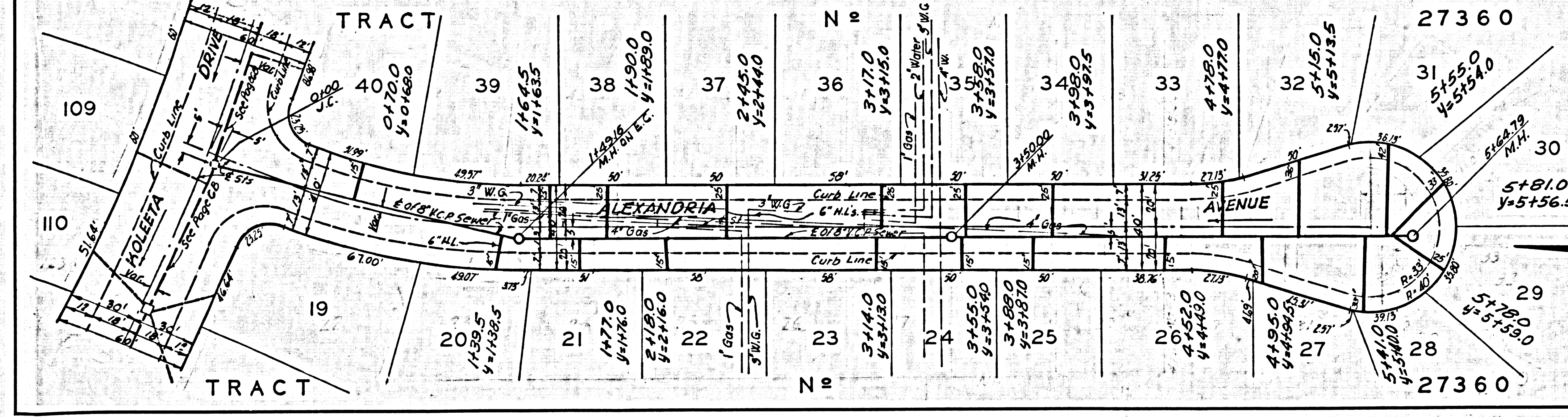
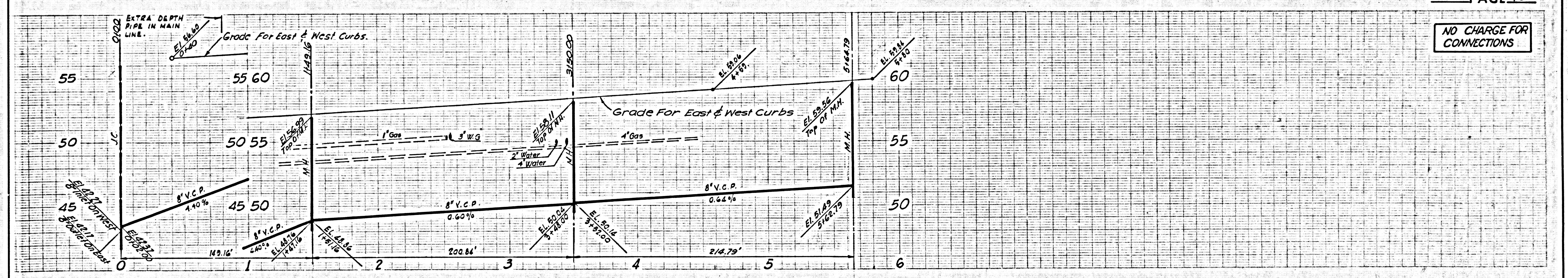


1818.09 OBSTS. W/TCART



NO CHARGE FOR CONNECTIONS

36358



NO CHARGE FOR CONNECTIONS

36359

1673.0A O&S'S IN TRACT