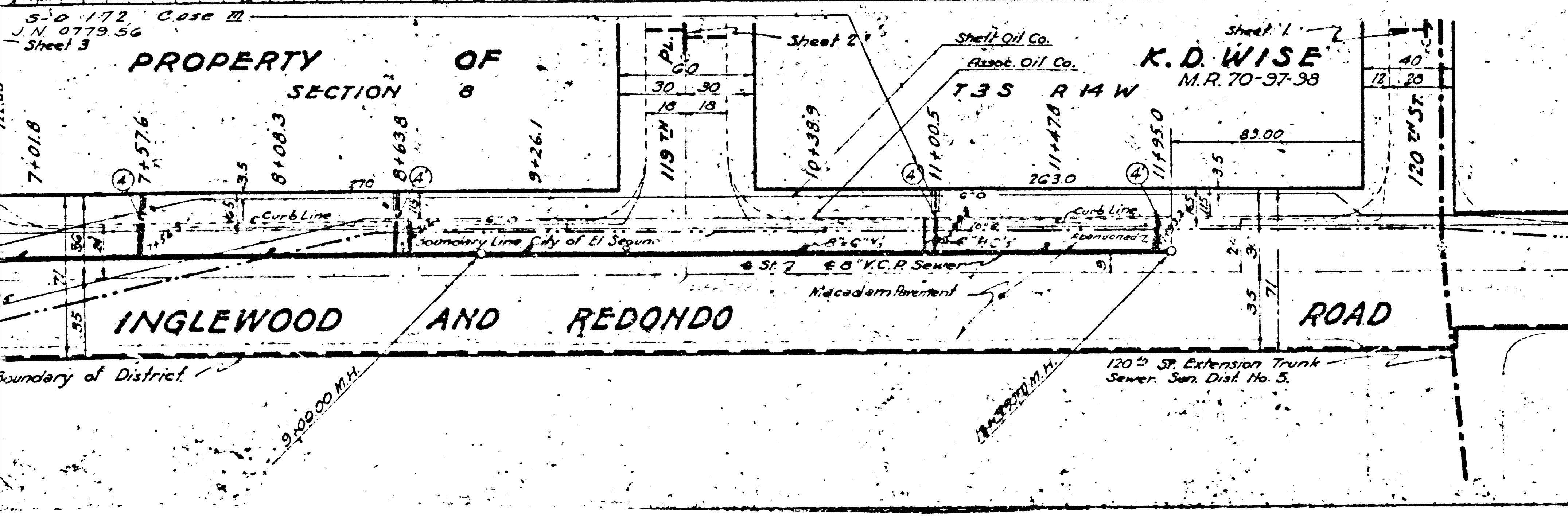


USE STANDARD STRENGTH PIPE  
 USE CEMENT MORTAR FOR ALL VITRIFIED CLAY PIPE JOINTS  
 ENCASE FOUR FEET OF SEWER AT POINTS OF INTERFERENCE WITH POLES AS PER S-6  
 CONSTRUCT HOUSE CONNECTIONS WITH INVERT AT CURB LINE 5 FEET BELOW CURB GRADE  
 ALL STRUCTURES SHALL BE BRICK SEWER STRUCTURES AS 1' X PLAN NO. S-104 EXCEPT AS NOTED  
 USE "JUST RITE" MANHOLE FRAMES AND COVERS EXCEPT AS NOTED  
 RESURFACE TRENCH WITHIN PAVED AREA WITH PREMIUM ROCK AND OIL IN THICKNESS EXCEPT AS NOTED

**COUNTY IMPROVEMENT NO. 1123**  
 PROFILE ALIGNMENT AND GRADE OF  
**SANITARY SEWERS**  
 TO BE CONSTRUCTED IN  
 INGLEWOOD AND REDONDO ROAD  
 AVIATION BOULEVARD  
 BETWEEN 120th ST. AND THE NORTHERLY  
 LINE OF LOT 38, TR. NO. 2663

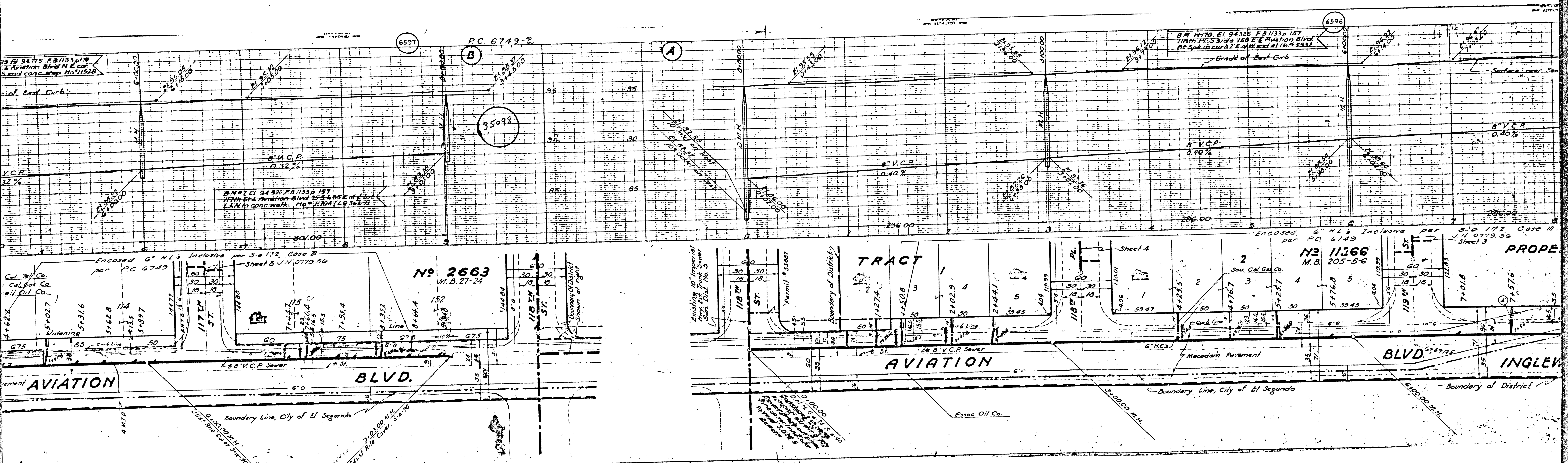
SHEET 7 OF 7 SHEETS



COUNTY OF LOS ANGELES, CALIFORNIA  
 ALFRED JONES COUNTY ENGINEER  
 RECOMMENDED *[Signature]* CHIEF DEPUTY  
 APPROVED *[Signature]* COUNTY ENGINEER  
 APPROVED AS TO FORM  
 H.W. KENNEDY  
 COUNTY COUNSEL  
 BY *[Signature]* DEPUTY

FOR LEGEND  
 SEE PLAN NO. 82-84  
 NOTE:  
 GRADES TO WHICH THIS IMPROVEMENT IS TO BE CONSTRUCTED ARE SHOWN ON PLANS OR PROFILES. GRADE POINTS FOR TOP OF CURB, CENTER LINE OF STREET OR CENTER LINE OF ALLEY ARE SHOWN BY CIRCLES ON PROFILES. AT ALL POINTS BETWEEN DESIGNATED POINTS THE GRADE SHALL BE ESTABLISHED SO AS TO CONFORM TO A STRAIGHT LINE DRAWN BETWEEN SAID DESIGNATED POINTS.  
 ELEVATIONS ARE IN FEET ABOVE U. S. C. & G. MEAN SEA LEVEL.  
 UNIT PRICES FOR ADDITIONAL WORK WHICH MAY BE REQUIRED BUT WHICH CANNOT BE ASCERTAINED IN ADVANCE SHALL BE SUBMITTED IN THE PROPOSAL.  
 THIS DRAWING AND THE DATA HEREON ARE HEREBY MADE A PART OF THE SPECIFICATIONS.

REFERENCES		DESIGNED		TRACED		CHECKED	
W. S.	25	ALEXANDER	SEP 1943	ALEXANDER	SEP 1943	GOLDBACH	SEP 1943
A. B.	357-985						
F. B.	1138-1160						



6597

PC 6749-2

A

35098

6596

No 2663  
M.B. 27-24

No 11366  
M.B. 205-5-6

TRACT

AVIATION

BLVD.

INGLEWOOD

of East Curb

6" V.C.P.  
0.32%

6" V.C.P.  
0.40%

6" V.C.P.  
0.40%

B.M. # EL 94 820 F.B. 1133 & 157  
117th St. Aviation Blvd. 75.54' S of E of E of L of L & N. 10' CONC. WALK. Ho# 11704 (28366-7)

B.M. # 1170. EL 94325 F.B. 1133 & 157  
118th St. S side 158' E Aviation Blvd  
82' Sp. in cur & 2' E of L of L Ho# 1332

Enclosed 6" H.L.'s Inclusive per S-6 112, Case II  
per PC 6749

Enclosed 6" H.L.'s Inclusive per  
per PC 6749

5" x 10" 112 Case III  
per PC 6749-56  
Sheet 3

Cal. Tel. Co.

Cal. Gas Co.

Oil Co.

Sou. Cal. Gas Co.

Existing 10" Imperial  
Iron Pipe Frank Sewer  
San. Dist. No. 5

Permit # 53807

Boundary of District

Sheet 4

Sheet 3

AVIATION

BLVD.

Boundary Line, City of El Segundo

Boundary Line, City of El Segundo

Boundary of District

4' MTD

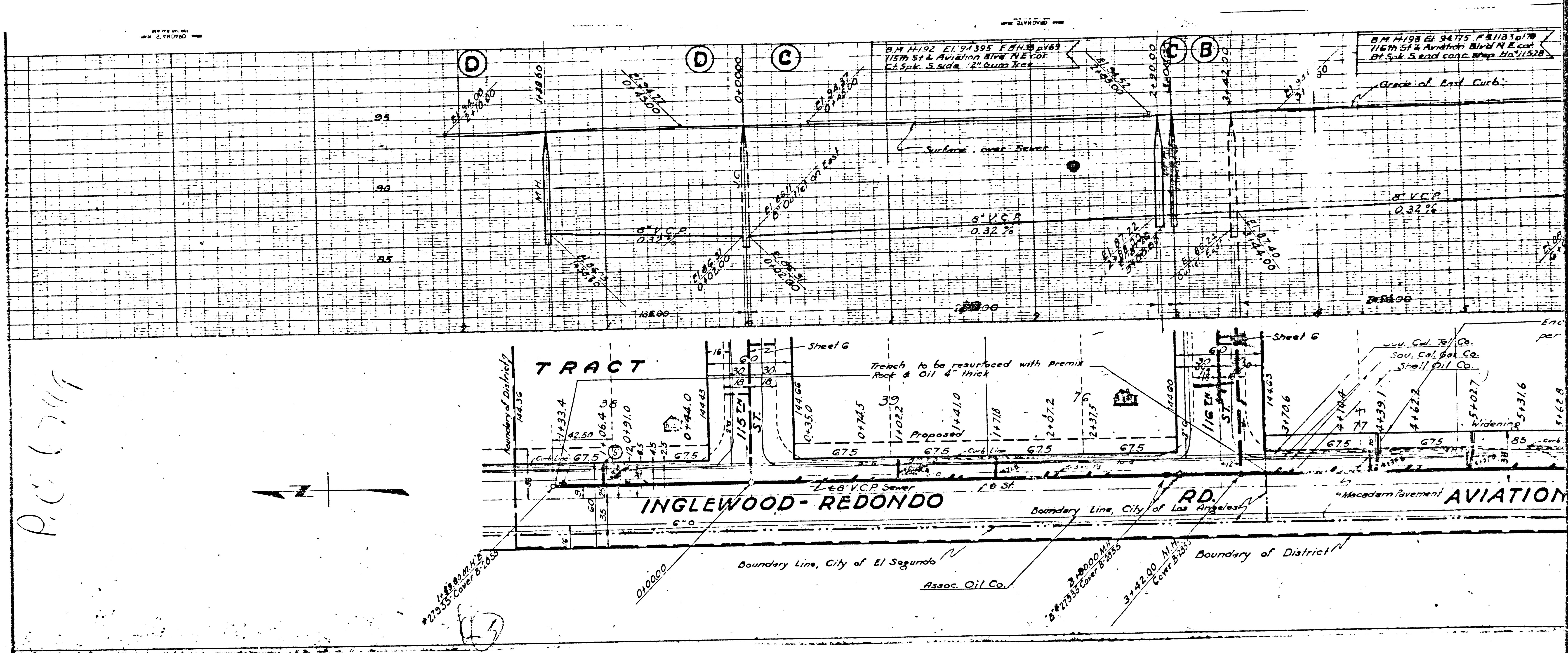
6' x 6' x 12' M.H.  
Vitrified Clay Cover, S-6-50

2' x 2' x 2' M.H.  
Vitrified Clay Cover, S-6-50

Essoe Oil Co.

6' x 6' x 12' M.H.

6' x 6' x 12' M.H.



P.C. 6717

