

IRWINDALE BUILDING DISTRICT No. 5.06

PRIVATE CONTRACT NO. 6759

PROFILE, ALIGNMENT AND GRADE OF  
SANITARY SEWERS  
TO BE CONSTRUCTED IN  
**CENTRAL STREET**  
AND OTHER RIGHTS OF WAY  
**J.N. 3354.05**  
1 SHEET, 2 PAGES

34633

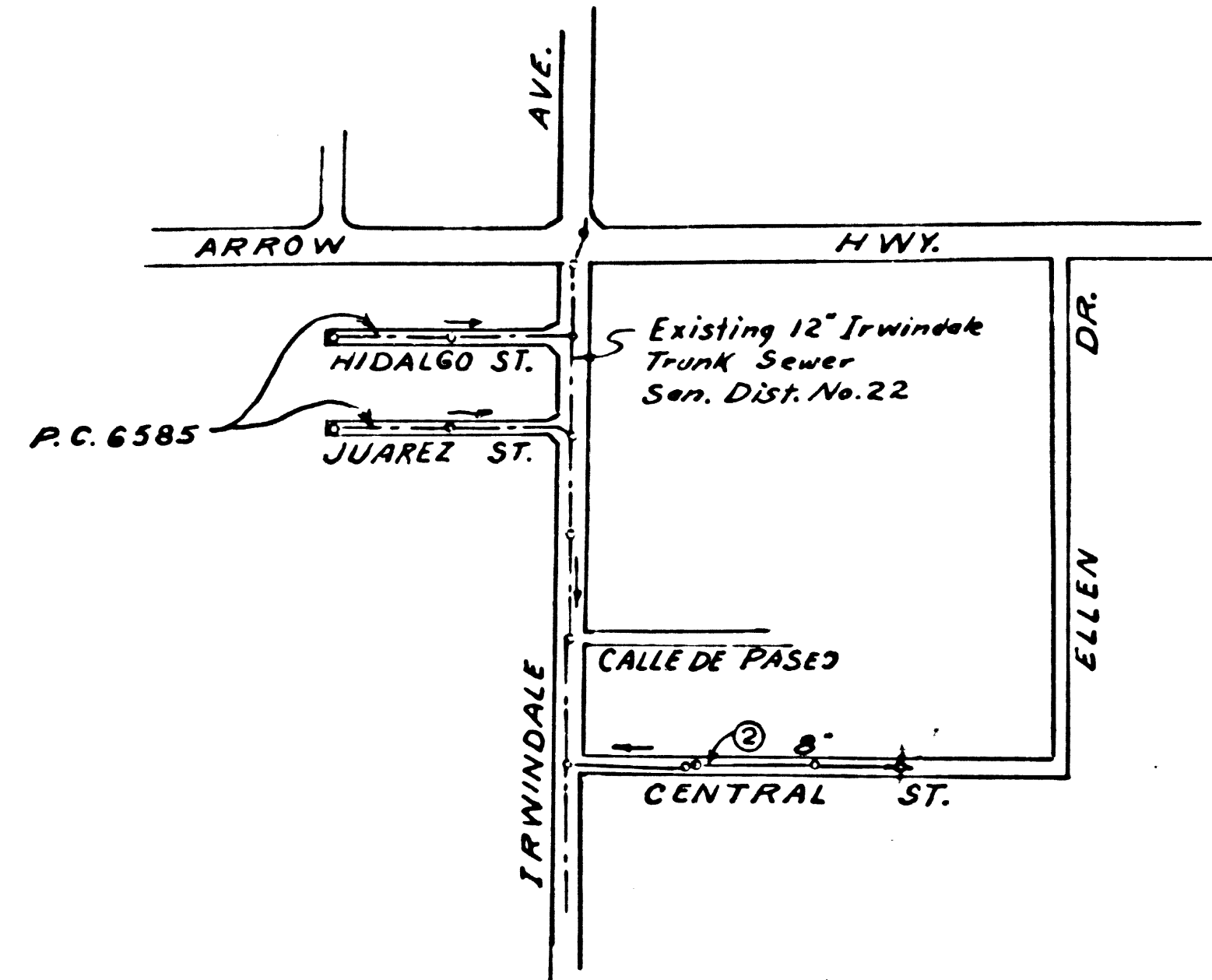
SCALE: VERT. 1" = 4'  
HORIZ. 1" = 40'  
DECEMBER 1963  
CITY OF IRWINDALE, CALIFORNIA

JOHN A. LAMBIE CITY ENGINEER  
APPROVED BY: *[Signature]* ASST. SANITATION ENGINEER  
RECOMMENDED BY: *[Signature]* REGIONAL ENGINEER  
DESIGNED BY: *[Signature]* REG. C.E. NO. 7552  
APPROVED BY: *[Signature]* CHIEF ENGINEER OF COUNTY SANITATION DISTRICT NO. 22  
APPROVED BY: *[Signature]* OFFICE ENGINEER  
APPROVED BY: *[Signature]* CITY MANAGER

NOTES:  
WORK SHALL BE CONSTRUCTED ACCORDING TO STANDARD SPECIFICATIONS DATED MAY 25, 1962 ON FILE IN THE OFFICE OF THE COUNTY ENGINEER AND SHALL BE PROSECUTED ONLY IN THE PRESENCE OF THE COUNTY ENGINEER.  
GRADES TO WHICH THIS IMPROVEMENT IS TO BE CONSTRUCTED ARE SHOWN ON PLANS AND PROFILES. GRADE POINTS FOR TOP OF CURB, CENTER LINE OF STREET OR CENTER LINE OF ALLEY ARE SHOWN BY CIRCLES ON PROFILES AT ALL POINTS BETWEEN DESIGNATED POINTS THE GRADE SHALL BE ESTABLISHED SO AS TO CONFORM TO A STRAIGHT LINE DRAWN BETWEEN SAID DESIGNATED POINTS.  
ELEVATIONS ARE IN FEET ABOVE U.S. & G.S. SEA LEVEL DATUM OF 1929.  
UNIT PRICES FOR ADDITIONAL WORK WHICH MAY BE REQUIRED BUT WHICH CANNOT BE ASCERTAINED IN ADVANCE, SHALL BE SUBMITTED IN THE PROPOSAL.  
THIS DRAWING AND THE DATA HEREON ARE HEREBY MADE A PART OF THE SPECIFICATIONS.

LAYOUT	McMillan	Dec 1963	UNDERGROUND	R.W.D.	1-7-64
TRACED	McMillan	Dec 1963	BENCH MARKS	g.f.l.	1-6-64
CHECKED	de Jong	Dec 1963	MAINTENANCE		
F. B.	7432	251-262, 35-38, 287-293	INSPECTOR		
A. B.	8618-21, 22, 23	W.S. 47	RECORD PLANS	W.Y. TEN	5-14-64

B.M. I#1 ELEV. 454.783  
Central St. (N. Side) 155' Ely of  
E of Irwindale Ave. L & T. in Conc.  
Walk to House # 16015  
County Engineer F.B. 1452-37



INDEX MAP  
CENTRAL STREET  
SCALE: 1" = 600'

Figure in Circle Indicates Page Number.

BEFORE BREAKING INTO ANY EXISTING STRUCTURE AND BEFORE FINAL ACCEPTANCE OF THIS WORK, COUNTY SANITATION DISTRICT (DU 4-1781) SHALL BE NOTIFIED IN ORDER THAT REQUIRED INSPECTION CAN BE MADE.

NO CONNECTIONS FOR THE DISPOSAL OF INDUSTRIAL WASTES SHALL BE MADE TO SEWERS SHOWN ON THESE DRAWINGS WITHOUT WRITTEN PERMISSION FROM THE CHIEF ENGINEER AND GENERAL MANAGER OF THE COUNTY SANITATION DISTRICTS.

USE EXTRA STRENGTH PIPE. ALL PIPE IS STANDARD DEPTH EXCEPT AS NOTED.  
USE MECHANICAL COMPRESSION JOINTS FOR ALL VITRIFIED CLAY PIPE SEWERS PER SPEC. SECS. 34, 44, & 49.  
ALL STRUCTURES SHALL BE BRICK SEWER STRUCTURES AS PER PLAN NO. S-104  
USE STANDARD MANHOLE FRAMES AND COVERS AS PER PLAN NO. S-117  
USE FORMULA NO. 2, SEC. 94 OF SPECIFICATIONS TO COMPUTE ALLOWABLE LEAKAGE.  
CONSTRUCT HOUSE LATERALS WITH INVERTS AT PROPERTY LINE 4 FEET BELOW CURB GRADE, OR GRADE OF TRANSIT LINE OF STREET, EXCEPT AS NOTED.  
FIGURES IN CIRCLES AT ENDS OF HOUSE LATERALS INDICATE DEPTH BELOW CURB GRADE, OR GRADE OF TRANSIT LINE OF STREET.  
FIGURES IN CIRCLES AT ENDS OF HOUSE LATERALS INDICATE HOUSE LATERALS SHALL BE CONSTRUCTED WITH 1/4" RISE PER FOOT TO PROPERTY LINE.  
WORDS IN CIRCLES AT ENDS OF HOUSE LATERALS INDICATE Y'S SHALL BE LAID HORIZONTAL AND HOUSE LATERALS SHALL BE CONSTRUCTED WITH 1/4" RISE PER FOOT TO PROPERTY LINE.  
ALL HOUSE LATERALS SHALL BE CONSTRUCTED IN A STRAIGHT ALIGNMENT AT RIGHT ANGLES FROM THE MAIN LINE SEWER EXCEPT AS SHOWN ON THE PLANS. HOUSE LATERALS FROM CHIMNEYS SHALL NOT HAVE AN ANGLE OF LESS THAN 45 DEGREES WITH THE MAIN LINE SEWER.  
THE CONTRACTOR SHALL NOTIFY THE CONSTRUCTION DIVISION BY TELEPHONE MADISON 9-00, EXT. 81551 AT LEAST 24 HOURS BEFORE STARTING ANY WORK UNDER THIS CONTRACT.

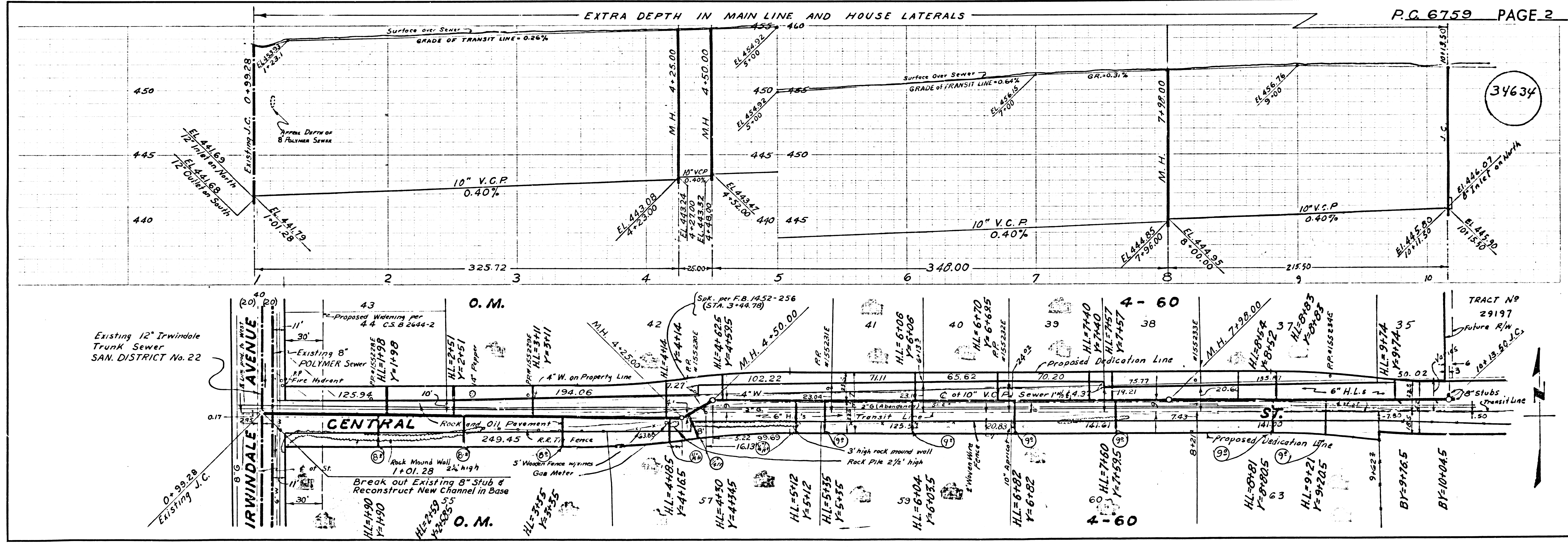
ALL STATE AND LOCAL TRENCH SAFETY ORDERS WILL BE RIGIDLY ENFORCED.  
RESURFACING SCHEDULE: RESURFACE TRENCH WITHIN PAVED AREA WITH PREMIX ROCK AND OIL 2 INCHES IN THICKNESS ON 1/2 INCHES OF AGGREGATE BASE MATERIALS, EXCEPT AS NOTED BELOW:

PAGE NO.	STREET	STATION LIMITS		TYPE OF RESURFACING
		FROM	TO	
2	IRWINDALE BLVD.	1+01.28	1+20	Premix Rock c. d. Oil 3 inches in thickness on 1/2 inches of Aggregate Base Material.

ALL CONCRETE CROSS GUTTERS, CURBS, GUTTERS, PAVEMENT, AND DRIVEWAYS SHALL BE TUNNELED OR JACKED PER LOS ANGELES COUNTY ROAD DEPARTMENT REQUIREMENTS.  
THE FOLLOWING LATEST REVISED STANDARD PLANS ON FILE IN THE OFFICE OF COUNTY ENGINEER SHALL APPLY IN THE CONSTRUCTION OF THIS PROJECT:  
STANDARD LEGEND ..... S-64  
STANDARD BRICK SEWER STRUCTURE ..... S-104  
STANDARD MANHOLE FRAME AND COVER ..... S-117  
STANDARD MANHOLE STEPS ..... S-142  
STANDARD STOPPER ..... S-130  
STANDARD WYE SUPPORT ..... S-172  
STANDARD SUPPORT AND PROTECTION OF SEWER PIPES ..... S-179  
STANDARD BEDDING FOR SEWER PIPES ..... S-179  
MINIMUM EXCAVATION SAFETY REQUIREMENTS ..... S-180

- THE UNDERGROUND UTILITY COMPANIES WITHIN THE LIMITS OF THIS PROJECT ARE AS FOLLOWS:
- Bellevue Park County Water District
  - Southern Counties Gas Company
  - 
  -

REVISED  
2-28-1964  
*[Signature]*



34634

DL 1-7-64