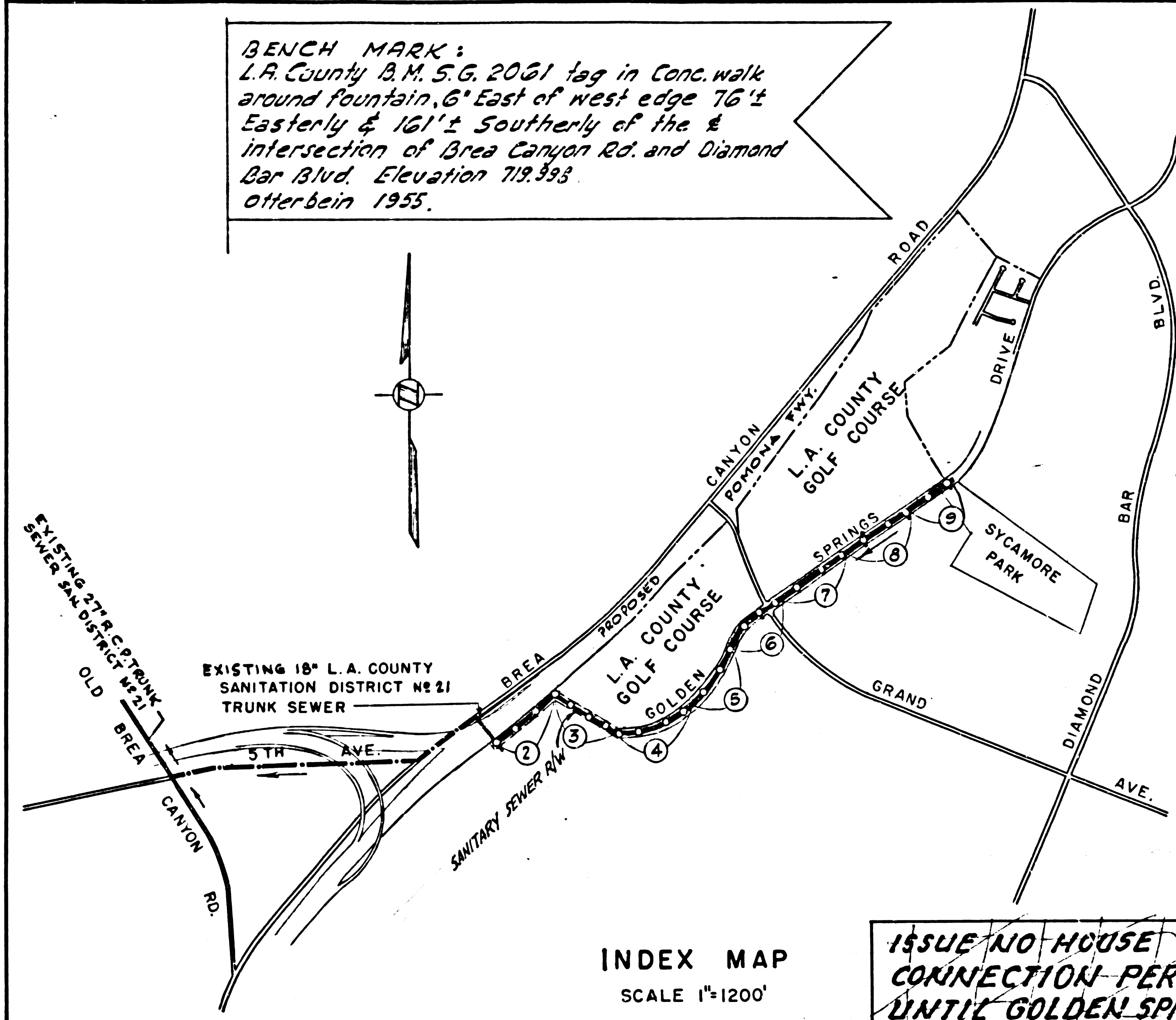


BENCH MARK:
 L.A. County B.M. S.G. 2061 tag in Conc. walk
 around fountain, 6' East of west edge 76'±
 Easterly & 161'± Southerly of the
 intersection of Brea Canyon Rd. and Diamond
 Bar Blvd. Elevation 719.393
 after being 1955.



INDEX MAP
 SCALE 1"=1200'

**ISSUE NO HOUSE
 CONNECTION PERMITS
 UNTIL GOLDEN SPRINGS
 DRIVE HAS BEEN
 DEDICATED & R/W IS CLEAR**

**COLLECT CHARGES
 AS INDICATED**
 P.R. Smith 6-4-64

REVISION.

GRADE CHANGE FROM
 STA. 12+75.00 TO STA. 18+50.00
 APPROVED. Pages 5 & 6
R. C. E. No. 11636 11-17-64
 DATE

NOTES (CONT.)

THE SEWER CONTRACTOR SHALL, UPON COMPLETION
 OF COUNTY ROAD DEPARTMENT CONTRACT #1277,
 RAISE THE MANHOLES TO FINISHED GRADES IN
 ACCORDANCE WITH COUNTY ENGINEER
 STANDARDS, AND RESURFACE AROUND
 MANHOLES.
 20. STANDARD SPECIFICATIONS DATED MAY 25, 1962
 APPLY IN THE CONSTRUCTION OF THIS
 CONTRACT.
 21. ALL GRADING TO BE TO BE IN PLACE PRIOR
 TO SEWER CONSTRUCTION.

NO CONNECTIONS FOR THE DISPOSAL OF
 INDUSTRIAL WASTES SHALL BE MADE TO
 SEWERS SHOWN ON THESE DRAWINGS
 WITHOUT WRITTEN PERMISSION FROM THE
 CHIEF ENGINEER AND GENERAL MANAGER
 OF THE COUNTY SANITATION DISTRICT.

BEFORE BREAKING INTO ANY EXISTING STRUCTURE
 AND BEFORE FINAL ACCEPTANCE OF THIS WORK,
 COUNTY SANITATION DISTRICT (DU/41281) SHALL
 BE NOTIFIED IN ORDER THAT REQUIRED INSPEC-
 TION CAN BE MADE.

DOUBLE SCALE
SAN DIMAS BLDG. DIST. NO. 10

NOTES

1. PROVIDE STAKES ON THE PROPERTY LINE OR PROPERTY LINES PRODUCED AT RIGHT ANGLES TO THE SEWER LINE AT THE CENTER LINE OF EACH MANHOLE.
2. NO REPRESENTATIVE OF THE COUNTY ENGINEER WILL SURVEY OR LAY OUT ANY PORTION OF THE WORK.
3. THE PRIVATE ENGINEER SHALL FURNISH THE COUNTY ENGINEER WITH GRADE SHEETS AND STATIONING FOR ALL BRANCHES AND MAIN LATERALS AND SHALL PROVIDE STAKES FOR THEM AT THEIR PROPER LOCATIONS WITH STATIONING PLAINLY MARKED. ANY CHANGE IN LOCATION SHALL BE REQUESTED IN WRITING BY THE PRIVATE ENGINEER.
4. THE PRIVATE ENGINEER SHALL MAINTAIN THE HOUSE LATERAL SEALS AT THE PROPERTY LINE THROUGH THE TOP OF EACH MANHOLE FROM HOUSE TO PROPERTY LINE.
5. NO REVISIONS SHALL BE MADE IN THESE PLANS WITHOUT THE APPROVAL OF THE COUNTY ENGINEER.
6. USE STANDARD MANHOLE FRAMES AND COVERS, S-117.
7. USE EXTRA STRENGTH PIPE ALL PIPE IS STANDARD DEPTH EXCEPT AS NOTED.
8. USE MECHANICAL COMPRESSION JOINTS FOR ALL V.C. JOINTS PER SPECS. SECS. 34 & 35.
9. ENCASE FOUR FEET OF SEWER AT POINTS OF INTERFERENCE WITH POLES, CASE III, S-172.
10. ENCASE FOUR FEET OF SEWER AT POINTS OF INTERFERENCE WITH POLES, CASE III, S-172.
11. MANHOLES SHALL BE BRICK SEWER STRUCTURES, 18" DIA. PRECAST CONCRETE MANHOLES PER S-10-152 OR S-10-173 MAY BE USED AT AN ALTERNATE LOCATION APPROVED BY THE COUNTY ENGINEER FOR ALLOWABLE LEAKAGE TEST USE YONKALA NO. 1, SPECS. SEC. 34.
12. MANHOLE TOPS IN UNIMPROVED RIGHTS OF WAY TO BE SIX INCHES ABOVE FINISHED GRADE.
13. THE CONTRACTOR SHALL NOTIFY THE CONSTRUCTION DIVISION BY TELEPHONE, MADISON 9-00, EXT. 8187 AT LEAST TWENTY FOUR HOURS BEFORE STARTING ANY WORK UNDER THIS CONTRACT.
14. CONSTRUCTION IN FILLED AREAS:
 - a) AN ACCEPTABLE CERTIFICATION OF COMPACTION TEST RESULTS SHALL BE SUBMITTED TO THE CONSTRUCTION DIVISION. COMPACTION TESTS ARE TO BE MADE IN ACCORDANCE WITH A.S.T.M. STANDARD METHOD OF TEST D-698-63T
 - b) NO CONSTRUCTION IS PERMITTED IN FILLED AREAS WHERE THE RELATIVE DENSITY OF COMPACTION IS LESS THAN 80%.
 - c) IF THE RELATIVE DENSITY OF COMPACTION IS LESS THAN 90%, ALL MAIN LINE AND HOUSE LATERALS SHALL BE CRADLED PER S-10-166 OR HAVE A SPECIAL BASE COURSE PER S-10-179, CASE III. SPECIAL MANHOLE BASES PER S-10-152 ARE REQUIRED.
 - d) IF THE RELATIVE DENSITY OF COMPACTION IS 90% OR GREATER, THE SPECIAL PROVISIONS IN (c) ARE NOT REQUIRED.
15. IF DURING THE COURSE OF CONSTRUCTION IT IS DETERMINED THAT THERE IS LESS THAN FOUR FEET OF COVER OVER THE TOP OF A MAIN LINE OR HOUSE LATERAL U.C.P. SEWER WHICH IS NOT INDICATED ON THE PLANS, THE PIPE SHALL BE ENCASED PER S-10-172, CASE III, UNLESS OTHERWISE APPROVED BY THE COUNTY ENGINEER.
16. ALL STATE AND LOCAL TRENCH SAFETY ORDERS WILL BE RIGIDLY ENFORCED.
17. THE SEWER CONTRACTOR SHALL INITIALLY COVER THE MANHOLES WITH 18" STEEL PLATES WITH A MINIMUM OVERLAP OF 6" AT HEIGHT BELOW TOP OF MANHOLE ELEVATION AS SHOWN ON PLANS OR AS FOLLOWS:
 - a) 24" DIA. MANHOLES AT STATIONS 24+47.48, 26+75, 30+00, 42+25, 45+55.72, 48+50 AND 50+50.
 - b) 18" DIA. MANHOLES AT STATIONS 24+47.48, 26+75, 30+00, 42+25, 45+55.72, 48+50 AND 50+50.
18. THE PRIVATE CONTRACTOR WILL CONSTRUCT THE ROADWAY IMPROVEMENT UNDER COUNTY ROAD DEPARTMENT CONTRACT NO. 41277 AND WILL MARK THE MANHOLE LOCATIONS AFTER PAVEMENT CONSTRUCTION.

PROFILE ALIGNMENT AND GRADE OF P.C. 6767
SANITARY SEWERS PAGE 1
 CONSTRUCTED IN

GOLDEN SPRINGS DRIVE
PRIVATE CONTRACT NO. 6767

W.S. 39
 5 SHEETS, 9 PAGES

SCALE: VERT. 1"=8'
 HORIZ. 1"=40' MAY, 1964

PREPARED IN THE OFFICES OF
QUINTON ENGINEERS, LTD.
 LOS ANGELES, CALIFORNIA
 H. W. Janner
 REG. C. E. NO. 6522

36993

FOR LEGEND SEE PLAN NO. S-A-64

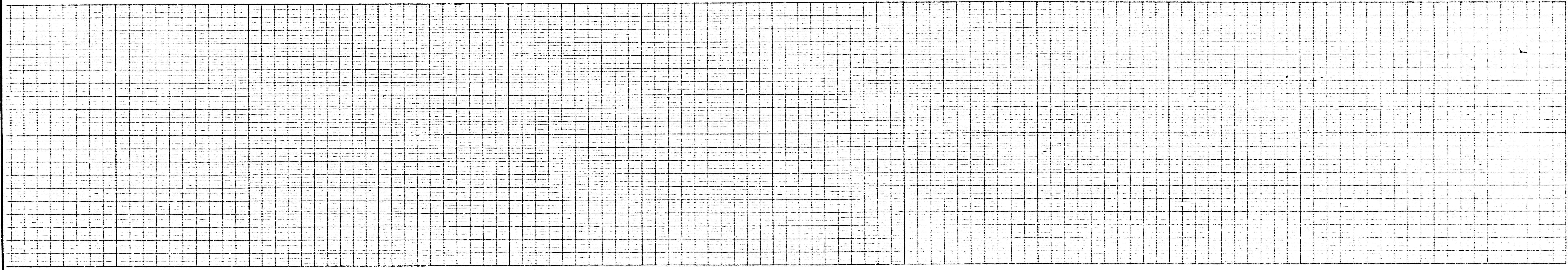
NOTE:
 GRADES TO WHICH THIS IMPROVEMENT IS TO BE CONSTRUCTED ARE SHOWN ON PLANS AND PROFILES. GRADE POINTS FOR TOP OF CURBS, CENTER LINE OF STREETS, OR CENTER LINE OF ALLEYS ARE SHOWN BY CIRCLES ON PROFILES. AT ALL POINTS BETWEEN DESIGNATED POINTS THE GRADE SHALL BE ESTABLISHED SO AS TO CONFORM TO A STRAIGHT LINE DRAWN BETWEEN SAID DESIGNATED POINTS.
 ELEVATIONS ARE IN FEET ABOVE U.S.C. & G.S. SEA LEVEL DATUM OF 1929.
 THIS DRAWING AND THE DATA HEREON ARE HEREBY MADE A PART OF THE SPECIFICATIONS.
 WORK SHALL BE CONSTRUCTED ACCORDING TO SPECIFICATIONS ON FILE IN THE OFFICE OF THE COUNTY ENGINEER AND SHALL BE PROSECUTED ONLY IN THE PRESENCE OF THE COUNTY ENGINEER.
 BEFORE WORK CAN BE STARTED, THE CONTRACTOR MUST OBTAIN A PERMIT TO EXCAVATE IN COUNTY STREETS FROM THE L.A. COUNTY ROAD DEPT., DISTRICT OFFICE NO. 1, AND MAKE A DEPOSIT WITH THE COUNTY ENGINEER, ROOM 330 COUNTY Bldg. 108 W. 5th St. LOS ANGELES, CALIF. SUFFICIENT TO COVER THE COST OF CONSTRUCTION INSPECTION AND RECORD PLANS.
 APPROVAL OF THIS PLAN BY THE COUNTY OF LOS ANGELES DOES NOT CONSTITUTE A REPRESENTATION AS TO THE ACCURACY OF THE LOCATION OF OR THE EXISTENCE OR NON-EXISTENCE OF ANY UNDERGROUND UTILITY PIPE, OR STRUCTURE WITHIN THE LIMITS OF THIS PROJECT. THIS NOTE APPLIES TO ALL PAGES.
 IF WORK IS TO BE DONE IN A STATE HIGHWAY, A PERMIT MUST BE OBTAINED FROM THE STATE OF CALIFORNIA, DIVISION OF HIGHWAYS, 120 SOUTH SPRING STREET.

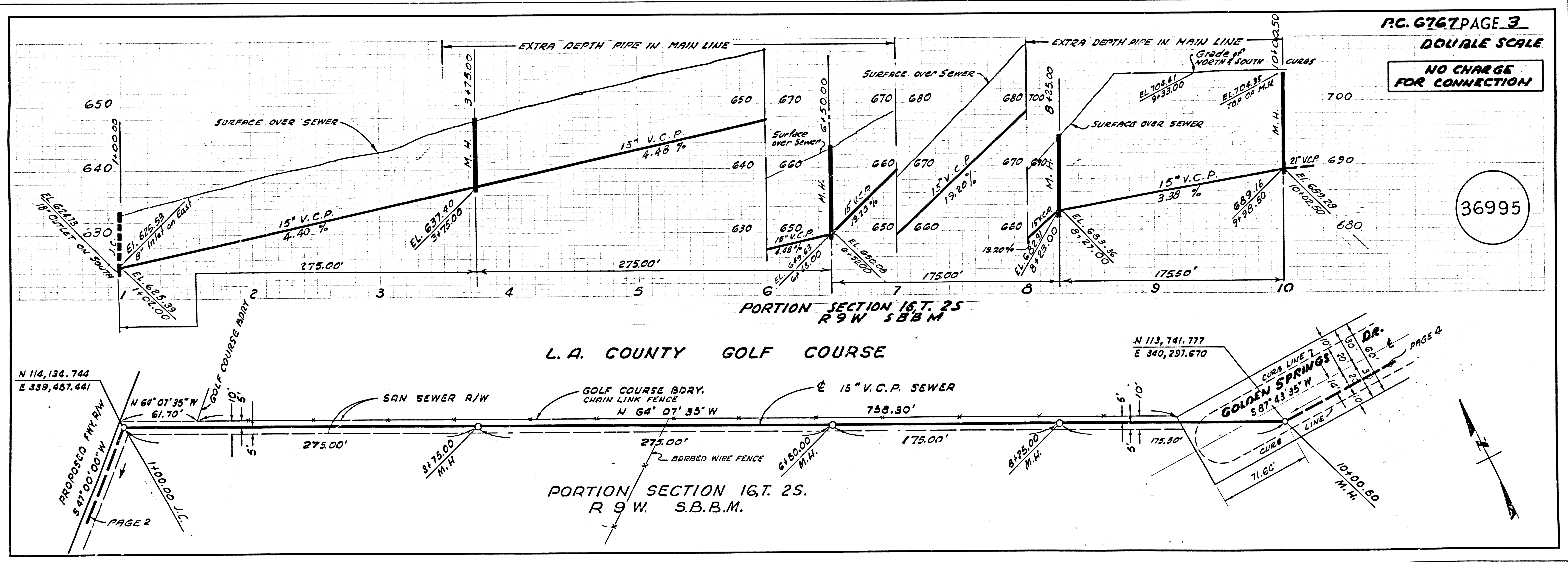
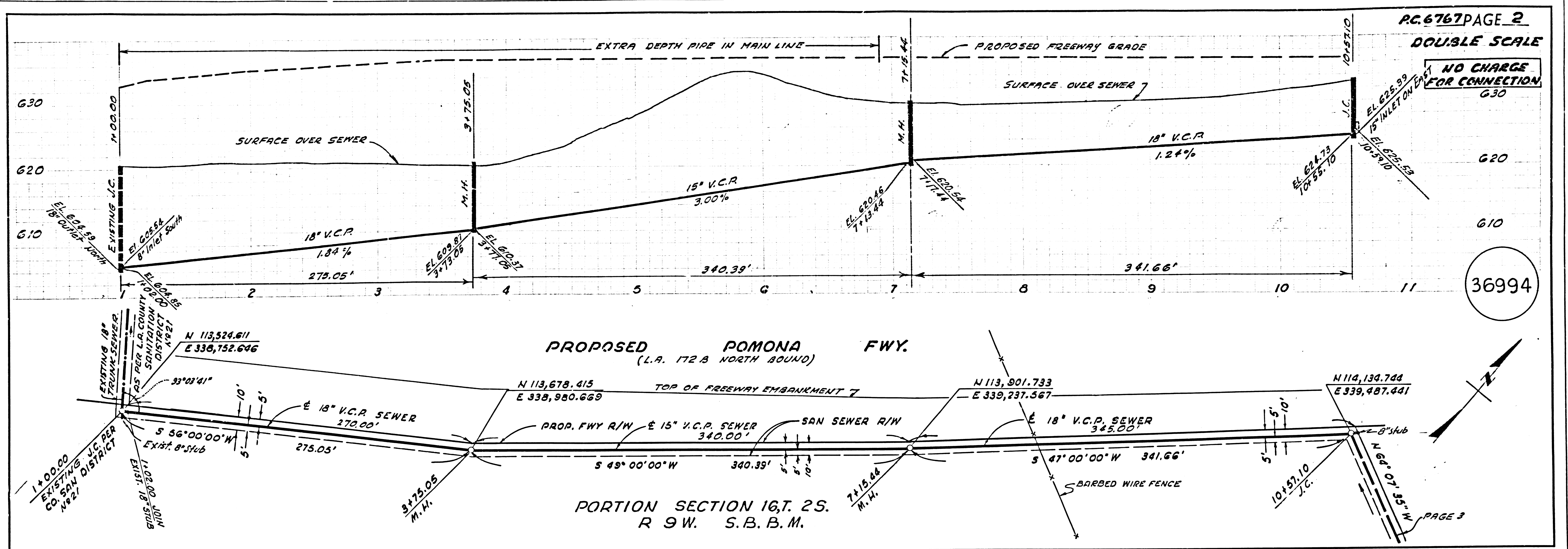
COUNTY OF LOS ANGELES, CALIFORNIA

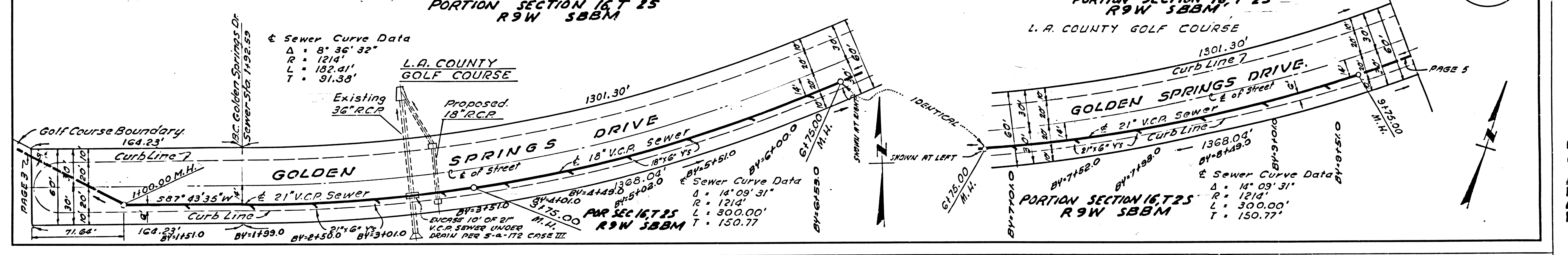
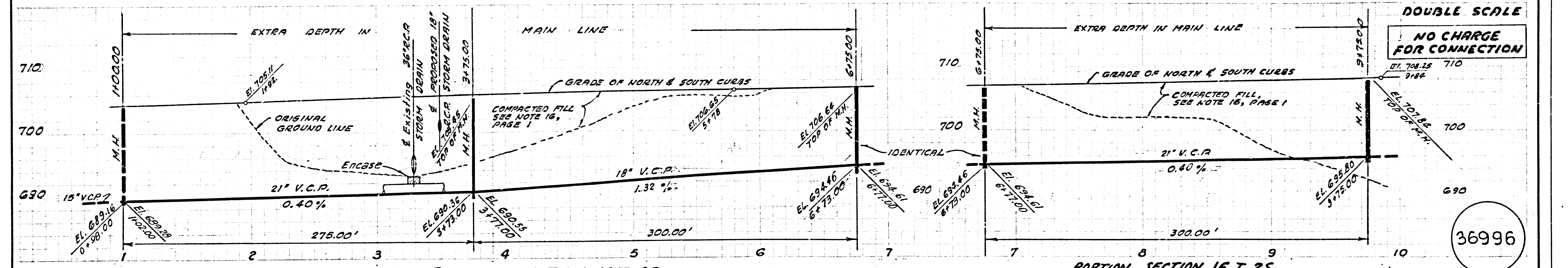
APPROVED, JOHN A. LAMBIE, COUNTY ENGINEER
 APPROVED, A. M. RAWNY, CHIEF ENGINEER
 CO. SAN. DIST. NO. 21
 APPROVED BY *[Signature]* APPROVED BY *[Signature]*
 ASST. SANITATION ENGINEER OFFICE ENGINEER
 CHECKED BY *[Signature]* 6-10-64
 OFFICE OF COUNTY ENGINEER, REG. C. E. NO. 11636
 SUBMITTED BY *[Signature]*
 SAN DIMAS REGIONAL ENGINEER

J.N. 0361-78

P.C. _____ PAGE _____







PORTION SECTION 16, T 2S R 9W SBBM

PORTION SECTION 16, T 2S R 9W SBBM

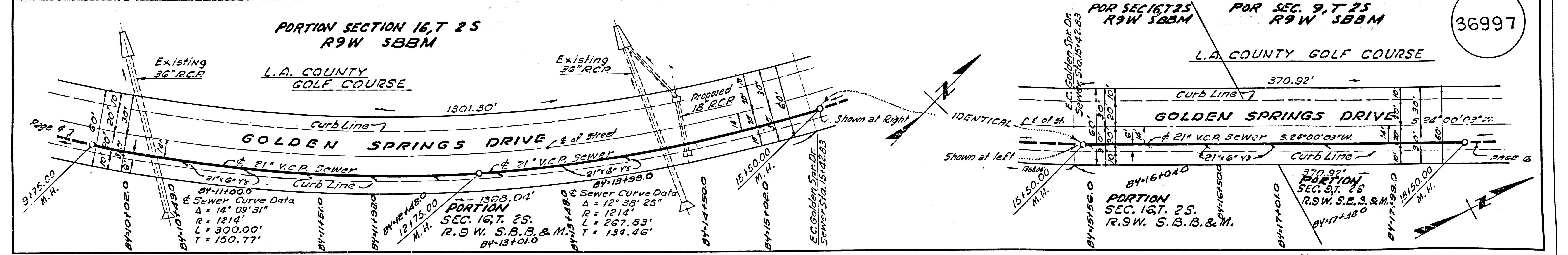
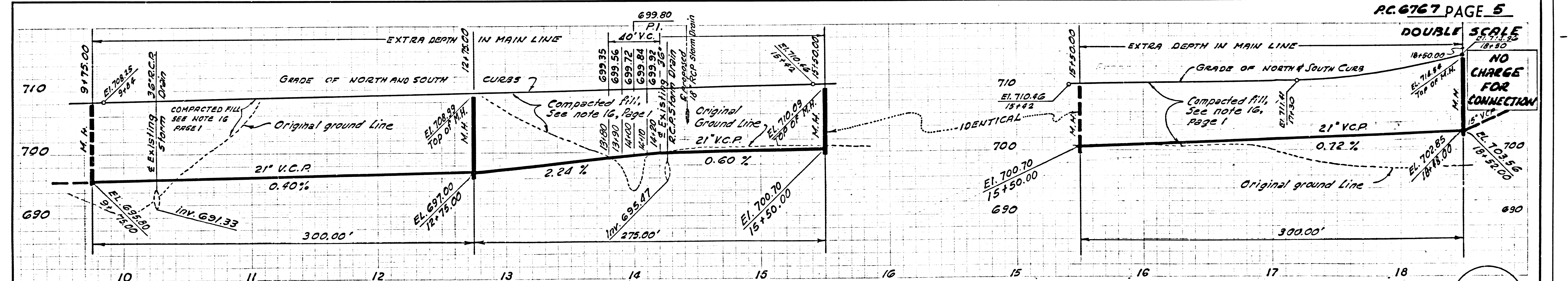
L.A. COUNTY GOLF COURSE

GOLDEN SPRINGS DRIVE

GOLDEN SPRINGS DRIVE

PORTION SECTION 16, T 2S R 9W SBBM

PORTION SECTION 16, T 2S R 9W SBBM



PORTION SECTION 16, T 2S R 9W SBBM

PORTION SECTION 16, T 2S R 9W SBBM

L.A. COUNTY GOLF COURSE

GOLDEN SPRINGS DRIVE

GOLDEN SPRINGS DRIVE

PORTION SECTION 16, T 2S R 9W SBBM

PORTION SECTION 16, T 2S R 9W SBBM

