

B.M. 56.1042A ELEV. 328.649  
 20' x 4' Lat. Center of Curve Return  
 at NW Corner of Valley Blvd &  
 Glencora Avenue.  
 Mod. P.S.G.  
 DUENTE QUAD. 1955

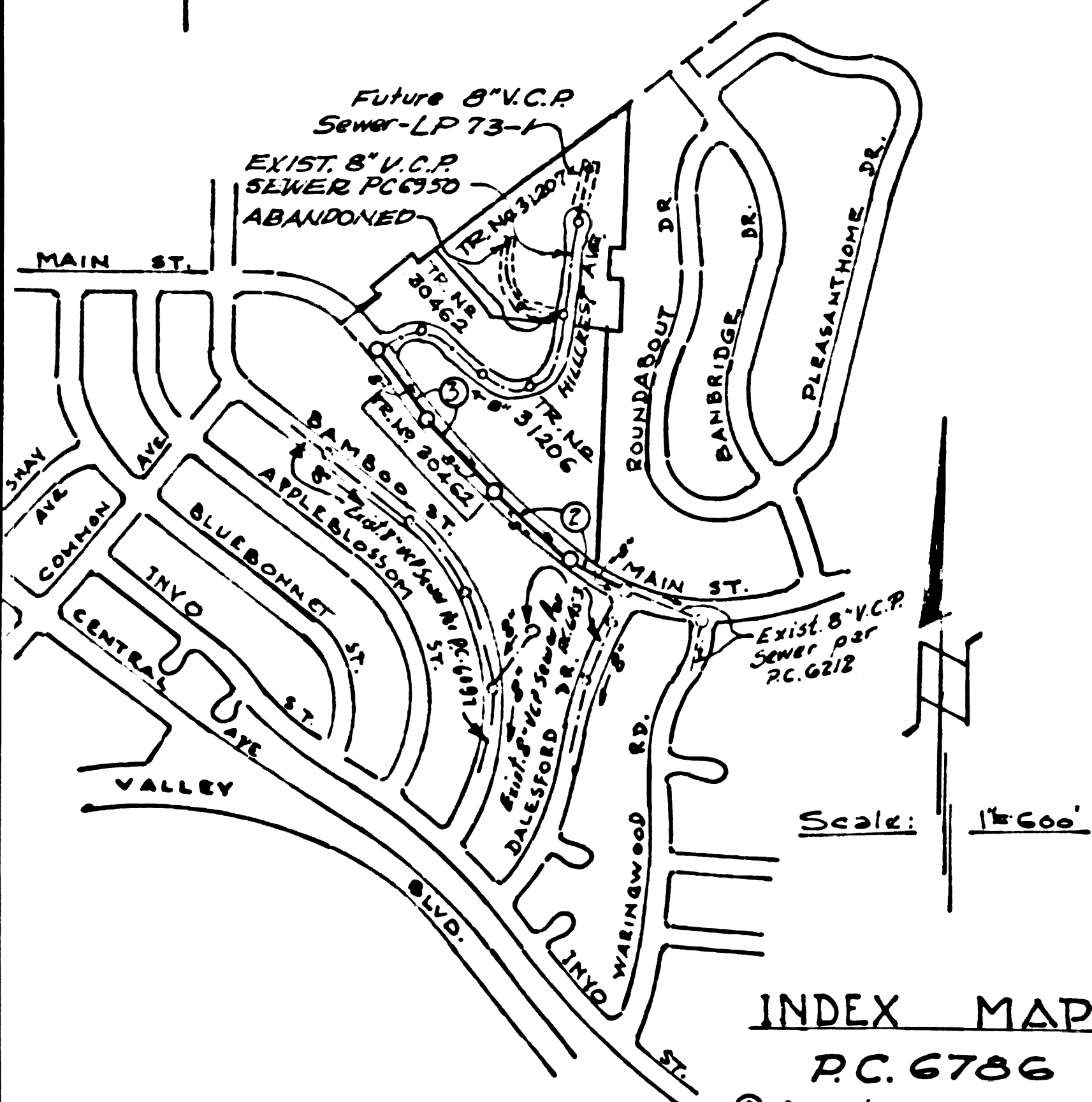
CITY OF LAPUENTE BLDG. DIST. NO. 2.02

PROFILE ALIGNMENT AND GRADE OF  
 SANITARY SEWERS PAGE 1  
 TO BE CONSTRUCTED IN

MAIN STREET  
 PRIVATE CONTRACT NO. 6786

W.S. 38  
 2 SHEETS, 3 PAGES  
 SCALE: VERT. 1"=4'  
 HORIZ. 1"=40' NOVEMBER, 1963  
 PREPARED IN THE OFFICE OF  
 PETE BAILEY & ASSOCIATES  
 By: *Norm Gerhardt*  
 (Norm Gerhardt) REG. C. E. NO. 10258

34473



INDEX MAP  
 P.C. 6786  
 ① Indicates page number

REVISION NO 2  
 CHANGED TRACT NO 29109 TO  
 TRACTS NO 30462 & 31206.  
 APPROVED:  
*Thomas S. Hoover*  
 R.E. NO 19156 DATE 20/1/64

REVISION NO 1  
 Alignment of 8" V.C.P. sewer main line  
 between Sta 0+00 & Sta 2+07.07.  
 APPROVED:  
*Ed. Harding* Feb 21, 1964  
 R.E. No. 211636

COLLECT CHARGES  
 AS INDICATED  
*Sherald P. Kinnay 1/6/64*

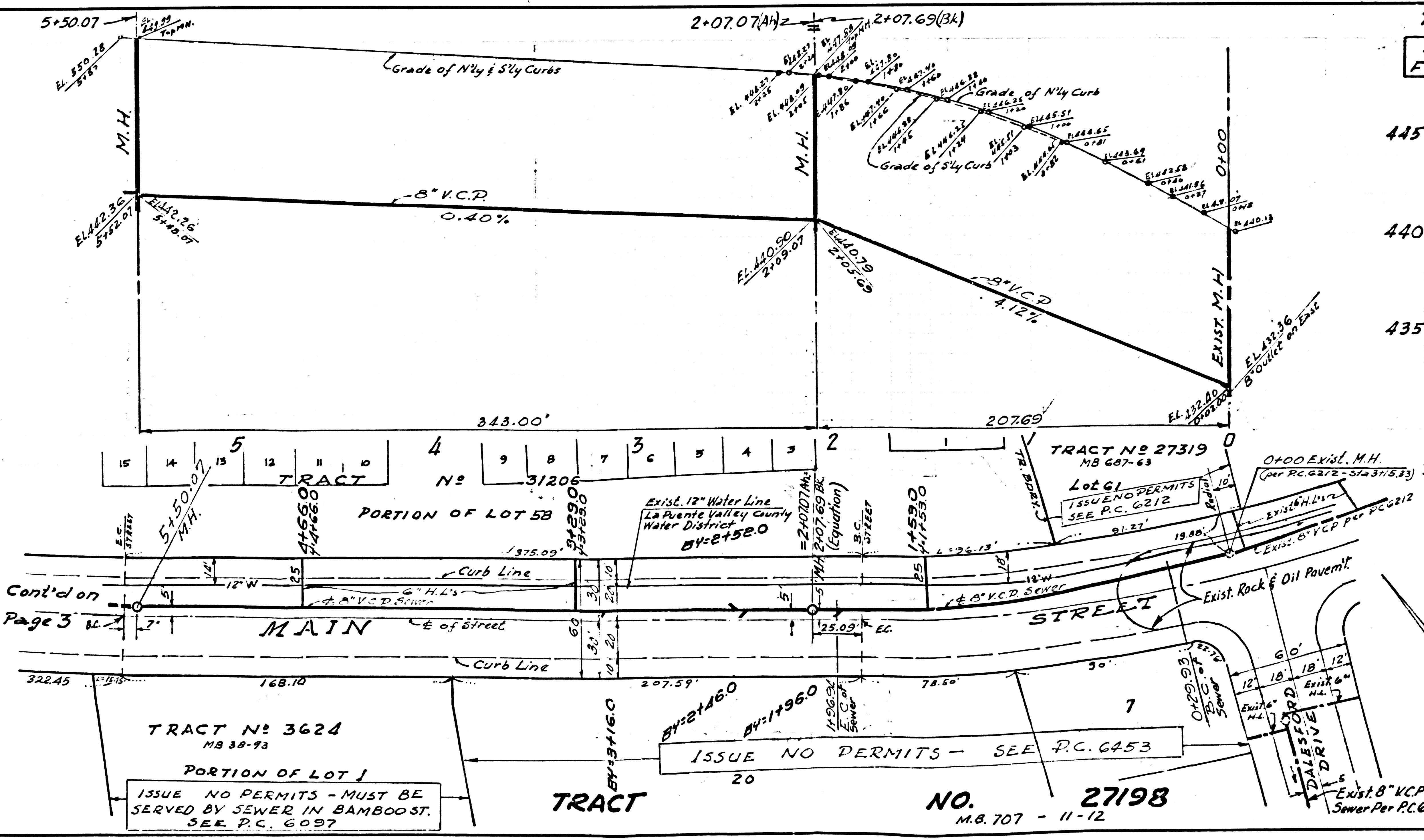
NO CONNECTIONS FOR THE DISPOSAL OF  
 INDUSTRIAL WASTES SHALL BE MADE TO  
 SEWERS SHOWN ON THESE DRAWINGS  
 WITHOUT WRITTEN PERMISSION FROM THE  
 CHIEF ENGINEER AND GENERAL MANAGER  
 OF THE COUNTY SANITATION DISTRICTS.

NOTE  
 GRADES TO WHICH THIS IMPROVEMENT IS TO BE CONSTRUCTED ARE SHOWN ON PLANS AND PROFILES. GRADE POINTS FOR TOP OF CURBS, CENTER LINE OF STREETS, OR CENTER LINE OF ALLEYS ARE SHOWN BY CIRCLES ON PROFILES AT ALL POINTS BETWEEN DESIGNATED POINTS THE GRADE SHALL BE ESTABLISHED SO AS TO CONFORM TO A STRAIGHT LINE DRAWN BETWEEN SAID DESIGNATED POINTS. ELEVATIONS ARE IN FEET ABOVE U.S.C. & G.S. SEA LEVEL DATUM OF 1929. THIS DRAWING AND THE DATA HEREON ARE HEREBY MADE A PART OF THE SPECIFICATIONS. BEFORE WORK CAN BE STARTED, THE CONTRACTOR MUST OBTAIN A PERMIT TO EXCAVATE IN CITY STREETS FROM THE L.A. COUNTY ROAD DEPT. DISTRICT OFFICE NO. 1 AND MAKE A DEPOSIT WITH THE CITY OF LAPUENTE, 1507 E. MAIN STREET, LA PUENTE, CALIFORNIA, SUFFICIENT TO COVER THE COST OF CONSTRUCTION INSPECTION AND RECORD PLANS. APPROVAL OF THIS PLAN BY THE CITY OF LAPUENTE DOES NOT CONSTITUTE A REPRESENTATION AS TO THE ACCURACY OF THE LOCATION OR THE EXISTENCE OR NON-EXISTENCE OF ANY UNDERGROUND UTILITY PIPE, OR STRUCTURE WITHIN THE LIMITS OF THIS PROJECT. THIS NOTE APPLIES TO ALL PAGES. IF WORK IS TO BE DONE IN A STATE HIGHWAY, A PERMIT MUST BE OBTAINED FROM THE STATE OF CALIFORNIA, DIVISION OF HIGHWAYS, 120 SOUTH SPRING STREET, LOS ANGELES, CALIFORNIA.

CITY OF LAPUENTE, CALIFORNIA  
 JOHN A. LAMBIE, CITY ENGINEER J. D. PARKHURST, CHIEF ENGINEER  
 CO. SAN. DIST. NO. 25  
 APPROVED BY: *Paul E. Kuhn* ASSISTANT SANITATION ENGINEER  
 APPROVED BY: *Ed. Harding* OFFICE ENGINEER  
 SUBMITTED BY: *Edmond W. Keigel* REGIONAL ENGINEER  
 SAN DIMAS  
 CHECKED BY: *Ed. Harding* 1-8-64  
 REG. C. E. NO. 11636  
 APPROVED BY: *Edmond W. Keigel* 1-8-64  
 CITY MANAGER  
 CITY OF LAPUENTE  
 J. N.

PC 6786 PAGE 2  
 NO CHARGE  
 FOR CONNECTIONS

34474



SEWER CURVE DATA  
 BETWEEN STA 0+00 AND  
 STA 2+07.69 = 2+07.07  
 Δ = 138' 11" 56"  
 R = 725' 7" 83.66"  
 L = 167.01'

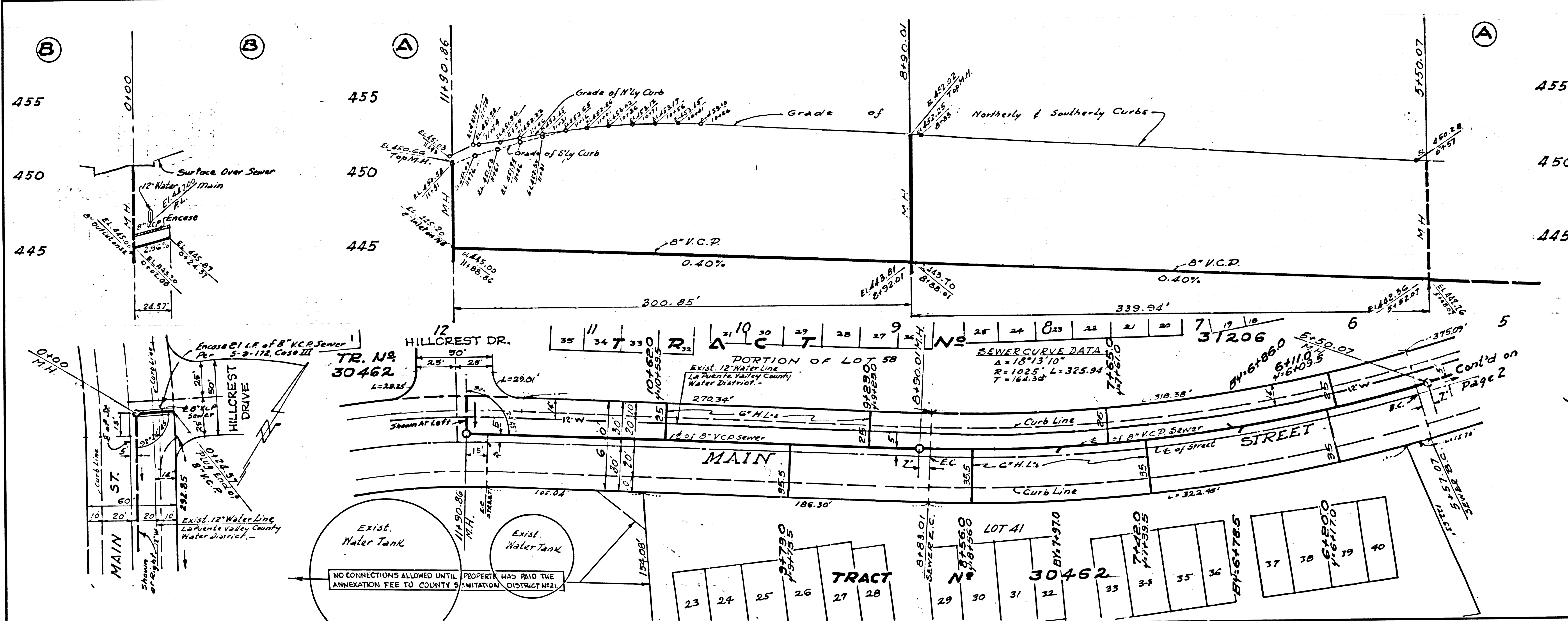
TRACT NO 3624  
 NB 30-93  
 PORTION OF LOT 1  
 ISSUE NO PERMITS - MUST BE  
 SERVED BY SEWER IN BAMBOO ST.  
 SEE P.C. 6097

TRACT NO 27198  
 NB 707 - 11-12  
 ISSUE NO PERMITS - SEE P.C. 6453



NO CHARGE FOR CONNECTIONS

34475



NO CONNECTIONS ALLOWED UNTIL ANNEXATION FEE TO COUNTY IS PAID. PROPERTY HAS PAID THE INITIATION DISTRICT FEE.

U.S.G. 100 L.A. COUNTY SEWER SHEET NO. 2 80 CAL. BLUEPRINT CO.