

B.M. #10-3 ELEV. 410.288
 C.S. Mon. in H.H. 893'N of E. of Irwindale
 Ave. & 11'N of E. of San Bernardino Rd. a
 Mkt. "B.M. 10-3 1952 R.E.G.3"
 QUAD. 1952 Adj.

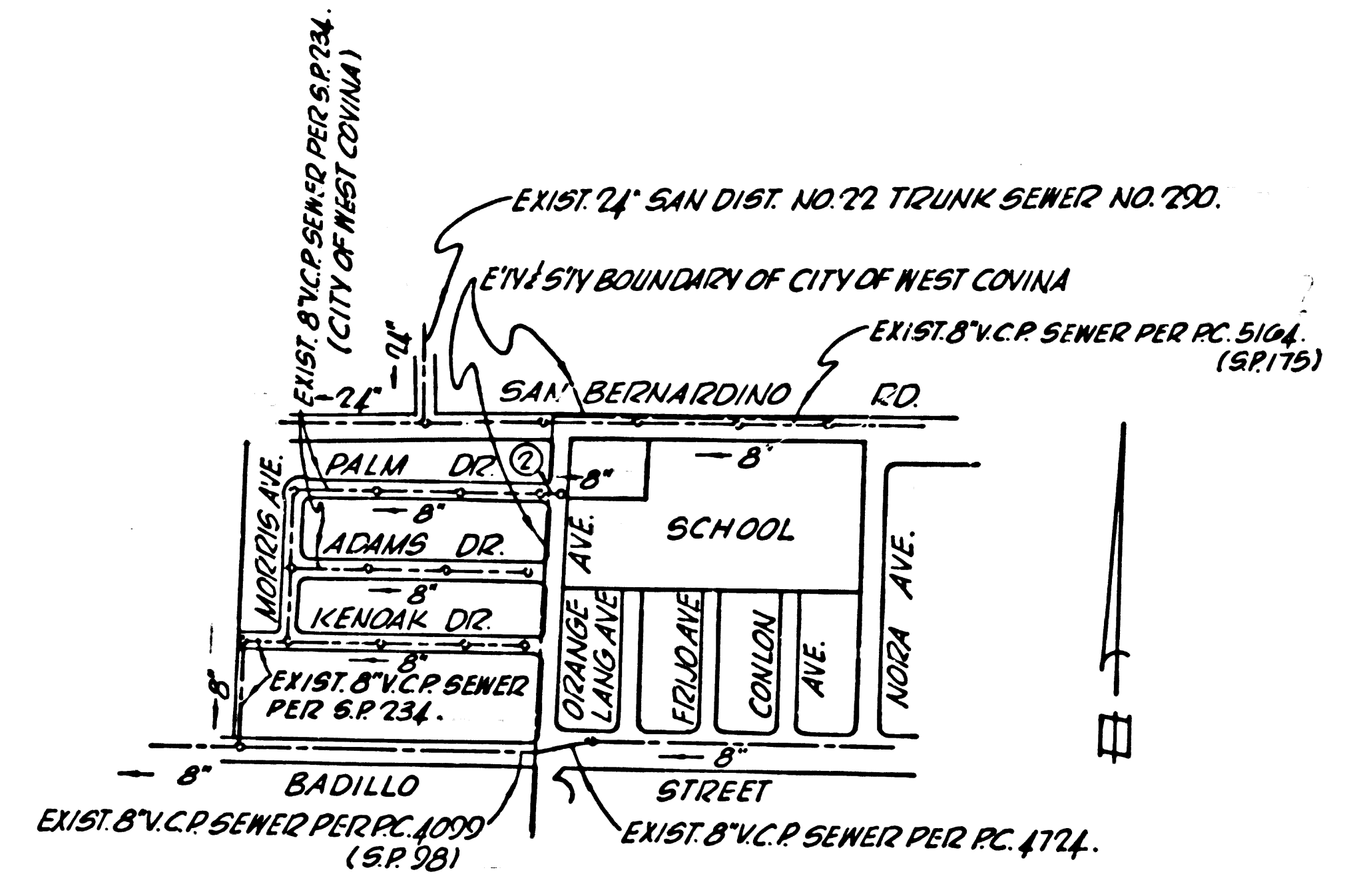
SAN DIMAS BLDG. DIST. NO. 10

PRIVATE CONTRACT NO. 6787

W.S. 47
 1 SHEET 2 PAGES
 SCALE: VERT. 1"=4' HORIZ. 1"=40'
 NOVEMBER 1963
 PREPARED IN THE OFFICE OF
HAROLD L. JOHNSON ENGINEERING.

34430

- NOTES:
1. PROVIDE STAKES ON THE PROPERTY LINE OR PROPERTY LINES PRODUCED AT RIGHT ANGLES TO THE SEWER LINE AT THE CENTER LINE OF EACH MANHOLE.
 2. NO REPRESENTATIVE OF THE COUNTY ENGINEER WILL SURVEY OR LAY OUT ANY PORTION OF THE WORK.
 3. THE PRIVATE ENGINEER SHALL FURNISH THE COUNTY ENGINEER WITH GRAD SHEETS AND STATIONING FOR ALL HOUSE LATERALS AND Y BRANCHES AND SHALL FURNISH THEM AT THEIR PROPER LOCATIONS WITH STATIONING PLAINLY MARKED. ALL HOUSE LATERALS SHALL BE CONSTRUCTED IN A STRAIGHT ALIGNMENT AT RIGHT ANGLES FROM THE MAIN LINE SEWER EXCEPT AS SHOWN ON THE PLANS. HOUSE LATERALS FROM CHIMNEYS SHALL NOT HAVE AN ANGLE OF LESS THAN 45° WITH THE MAIN LINE SEWER. ANY CHANGE IN ALIGNMENT SHALL BE REQUESTED IN WRITING BY THE PRIVATE ENGINEER.
 4. THE PRIVATE ENGINEER SHALL FURNISH THE HOUSE LATERAL DEPTH AT THE PROPERTY LINE BELOW THE TOP OF CURB ELEVATION FOR EACH HOUSE LATERAL ON THE GRADE SHEET.
 5. NO REVISIONS SHALL BE MADE IN THESE PLANS WITHOUT THE APPROVAL OF THE COUNTY ENGINEER.
 6. THE CONTRACTOR SHALL NOTIFY THE CONSTRUCTION DIVISION BY TELEPHONE, MADISON 9-47-47, EXT. 8155, AT LEAST TWENTY-FOUR HOURS BEFORE STARTING ANY WORK UNDER THIS CONTRACT.
 7. MANHOLES SHALL BE BRICK SEWER STRUCTURES PER S-104. PRECAST CONCRETE MANHOLES PER S-135 OR S-173 MAY BE USED AS AN ALTERNATE IN LOCATIONS APPROVED BY THE COUNTY ENGINEER.
 8. USE STANDARD MANHOLE FRAMES AND COVERS, S-117.
 9. MANHOLE TOP TO BE CONSTRUCTED LEVEL WITH EXISTING GRADE.
 10. USE EXTRA STRENGTH PIPE, ALL PIPE IS STANDARD DEPTH.
 11. USE MECHANICAL COMPRESSION JOINTS FOR 1" V.C.P. PER SPECS, SECS. 34 & 42-10.
 12. WHERE EVER GROUND WATER IS ENCOUNTERED DURING THE CONSTRUCTION OF THE SEWERS, THE V.C.P. JOINTS SHALL BE OF JOINT COMPOUND PER SPECS, SECS. 33 & 48, OR MECHANICAL COMPRESSION JOINTS PER SPECS, SEC. 36.
 13. IF A POWER POLE IS WITHIN THREE FEET OF THE SEWER, THE SEWER SHALL BE ENCASED, PER S-172, CASE III, TWO FEET ON EITHER SIDE FROM THE POINT OF INTERFERENCE.
 14. IF DURING THE COURSE OF CONSTRUCTION IT IS DETERMINED THAT THERE IS LESS THAN FOUR FEET OF COVER OVER THE TOP OF A MAIN LINE OR HOUSE LATERAL V.C.P. SEWER WHICH IS NOT INDICATED ON THE PLANS, THE PIPE SHALL BE ENCASED PER S-172, CASE III, UNLESS OTHERWISE APPROVED BY THE COUNTY ENGINEER.
 15. HOUSE LATERAL TO BE CONSTRUCTED WITH INVERT AT PROPERTY LINE. 6" FEET BELOW CURB GRADE.
 16. RESURFACE ALL TRENCHES WITHIN PAVED AREAS TO MEET L.A. COUNTY ROAD DEPT. OR CALIFORNIA STATE HIGHWAY REQUIREMENTS IN ACCORDANCE WITH PERMITS.
 17. FOR ALLOWABLE LEAKAGE TEST USE FORMULA NO. 2, SPECS, SEC. 54.
 18. ALL STATE AND LOCAL TRENCH SAFETY ORDERS WILL BE RIGIDLY ENFORCED.
 19. BEFORE WORK CAN BE STARTED IN CITY STREETS, THE CONTRACTOR MUST OBTAIN AN EXCAVATION PERMIT FROM THE CITY ENGINEER OF THE CITY OF WEST COVINA. THE CITY ENGINEER MUST BE NOTIFIED IN WRITING 24 HOURS PRIOR TO CONSTRUCTION IN ORDER THAT THE REQUIRED INSPECTION MAY BE MADE.
 20. ALL RESURFACING IN PALM DRIVE STA. 8+00 TO STA. 8+21 SHALL BE 3" AC ON 4" AGG. BASE AND SHALL BE DONE IN ACCORDANCE WITH THE STANDARD STREET SPECIFICATIONS AND MUNICIPAL CODE SECTIONS 7200-7249 AND TO THE SATISFACTION OF THE CITY ENGINEER.



INDEX MAP
 SCALE: 1"=600'
 P.C. 6787

APPROVED: *Joseph B. Granville* DATE: 12-5-63
 INDUSTRIAL WASTE DIVISION

COLLECT CHARGES AS INDICATED
Gerald P. Kenny 12-6-63

NO CONNECTIONS FOR THE DISPOSAL OF INDUSTRIAL WASTES SHALL BE MADE TO SEWERS SHOWN ON THESE DRAWINGS WITHOUT WRITTEN PERMISSION FROM THE CHIEF ENGINEER AND GENERAL MANAGER APPROVAL: *J. N. 036191*

COUNTY OF LOS ANGELES, CALIFORNIA
 JOHN A. LAMBIE, COUNTY ENGINEER
 APPROVED BY: *Ed. H. Hester* SANITATION ENGINEER
 SUBMITTED BY: *Harold L. Johnson* REGIONAL ENGINEER
 CHECKED BY: *Al. Under* 12-18-63
 CITY OF WEST COVINA
R.E. Center City Engineer, 12-12-63
 J. N. 036191

NO CHARGE FOR CONNECTION

34431

