

DOUBLE SCALE
LA PUENTE BLDG. DIST. NO. 2

PROFILE ALIGNMENT AND GRADE OF P.C. 6788
SANITARY SEWERS PAGE 1
TO BE CONSTRUCTED IN

TRACT No 29185
PRIVATE CONTRACT NO. G788

W.S. 39

6 SHEETS; 5 PAGES

36220

SCALE: VERT. 1" = 8'
HORIZ. 1" = 40'

November, 1963

PREPARED IN THE OFFICES OF
DUTCH HOLZHAUER ENGINEERING INC.
7 W. Hillman Ave. Alhambra, California CU-3-9251

By: *[Signature]*
REG. C. E. NO. 10219

FOR LEGEND SEE PLAN NO. S-A-64

NOTE:
GRADES TO WHICH THIS IMPROVEMENT IS TO BE CONSTRUCTED ARE SHOWN ON PLANS AND PROFILES. GRADE POINTS FOR TOP OF CURB, CENTER LINE OF STREETS, OR CENTER LINE OF ALLEYS ARE SHOWN BY CIRCLES ON PROFILES. AT ALL POINTS BETWEEN DESIGNATED POINTS THE GRADE SHALL BE ESTABLISHED SO AS TO CONFORM TO A STRAIGHT LINE DRAWN BETWEEN SAID DESIGNATED POINTS.
ELEVATIONS ARE IN FEET ABOVE U.S.C. & G.S. SEA LEVEL DATUM OF 1929.
THIS DRAWING AND THE DATA HEREON ARE HEREBY MADE A PART OF THE SPECIFICATIONS.
WORK SHALL BE CONSTRUCTED ACCORDING TO SPECIFICATIONS CONTAINED IN THE SPECIFICATIONS FILED IN THE OFFICE OF THE COUNTY ENGINEER AND SHALL BE PROSECUTED ONLY IN THE PRESENCE OF THE COUNTY ENGINEER.
BEFORE WORK CAN BE STARTED THE CONTRACTOR MUST OBTAIN A PERMIT TO EXCAVATE IN COUNTY STREETS FROM THE COUNTY ENGINEER, DISTRICT OFFICE NO. 1, AND PAY FEE TO THE COUNTY ENGINEER ROOM BIG COUNTY BUILDING 222 BOWLING CO. WEST SECOND ST. LOS ANGELES, CALIF. 90012.
APPROVAL OF THIS PLAN BY THE COUNTY OF LOS ANGELES DOES NOT CONSTITUTE A REPRESENTATION AS TO THE ACCURACY OF THE LOCATION OR THE EXISTENCE OR NON-EXISTENCE OF ANY UNDERGROUND UTILITY PIPE, OR STRUCTURE WITHIN THE LIMITS OF THIS PROJECT. THIS NOTE APPLIES TO ALL PAGES.
IF WORK IS TO BE DONE IN A STATE HIGHWAY, A PERMIT MUST BE OBTAINED FROM THE STATE OF CALIFORNIA, DIVISION OF HIGHWAYS, 150 SOUTH SPRING STREET.

COUNTY OF LOS ANGELES, CALIFORNIA

APPROVED, JOHN A. LAMBIE, COUNTY ENGINEER APPROVED, J.D. PARKHURST, CHIEF ENGINEER

CO. SAN. DIST. NO. 21

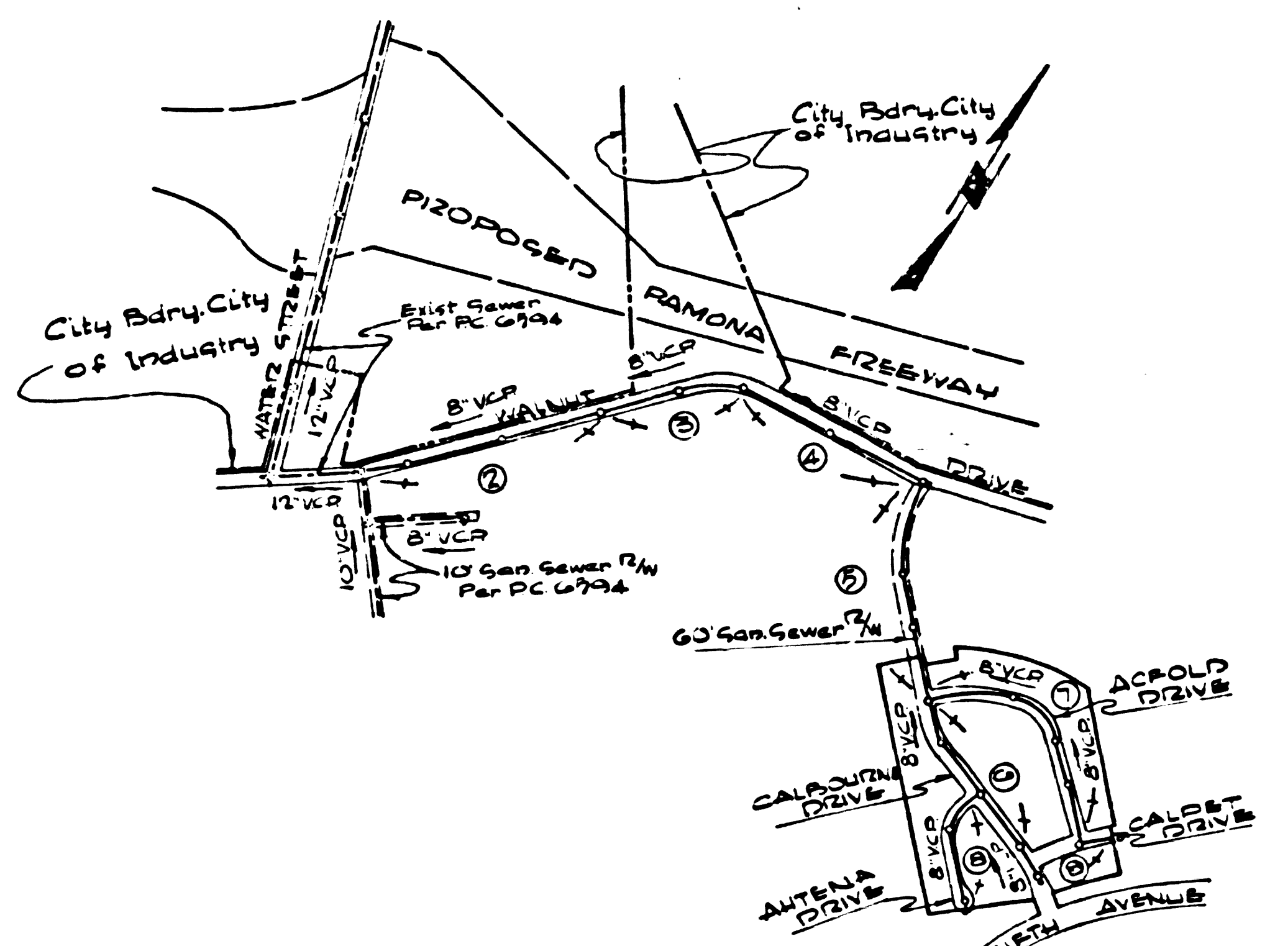
BY: *[Signature]* ASST. SANITATION ENGINEER BY: *[Signature]* OFFICE ENGINEER

SUBMITTED BY: *[Signature]* SAN DIMAS REGIONAL OFFICE

CHECKED BY: *[Signature]* 1-30-64 REG. C. E. NO. 11636

J.N. 036192

BENCH MARK: 54.1790
FOUND LEADBACK NEAR CENTER OF CURVED CONCRETE HEADWALL 12' NORTHERLY OF THE CENTERLINE OF LYCOMING STREET AND 20' EASTERLY OF LEMON.
OTHER BEN 1957 ELEV. 929.111



INDEX MAP
Scale: 1" = 600'
TRACT No 29185
P.C. 6788

UNDERGROUND STRUCTURES

ALL UNDERGROUND UTILITIES OR STRUCTURES REPORTED BY THE OWNER OR OTHERS AND THOSE SHOWN ON THE RECORDS EXAMINED ARE INDICATED WITH THEIR APPROXIMATE LOCATION AND EXTENT.
THE OWNER BY EXCEPTING THESE PLANS OR PROCEEDING WITH IMPROVEMENTS PURSUANT THERETO AGREES TO ASSUME LIABILITY AND TO HOLD UNDER SIGNED HARMLESS FOR ANY DAMAGES RESULTING TO THE EXISTENCE OF THE UNDERGROUND UTILITIES OR STRUCTURES NOT REPORTED TO THE UNDER-SIGNED; NOT INDICATED ON THE PUBLIC RECORDS EXAMINED; LOCATED AT VARIANCE WITH THAT REPORTED OR SHOWN ON RECORDS EXAMINED.
THE CONTRACTOR IS REQUIRED TO TAKE DUE PRECAUTIONARY MEASURES TO PROTECT THE UTILITIES OR STRUCTURES SHOWN AND ANY OTHER UTILITIES OR STRUCTURES FOUND AT THE SITE. IT SHALL BE THE CONTRACTOR'S RESPONSIBILITY TO NOTIFY THE OWNERS OF THE UTILITIES OR STRUCTURES CONCERNED BEFORE STARTING WORK.

[Signature]
W.C. HOLZHAUER REG. C. E. NO. 13054

COLLECT CHARGES AS INDICATED
[Signature]

Note: 30' Gas Line in Walnut Street is high pressure gas line (699 psi). Contractor to notify So. Counties Gas Co. 24 hrs. prior to excavation. Phone Area, Jaeger 9-2889

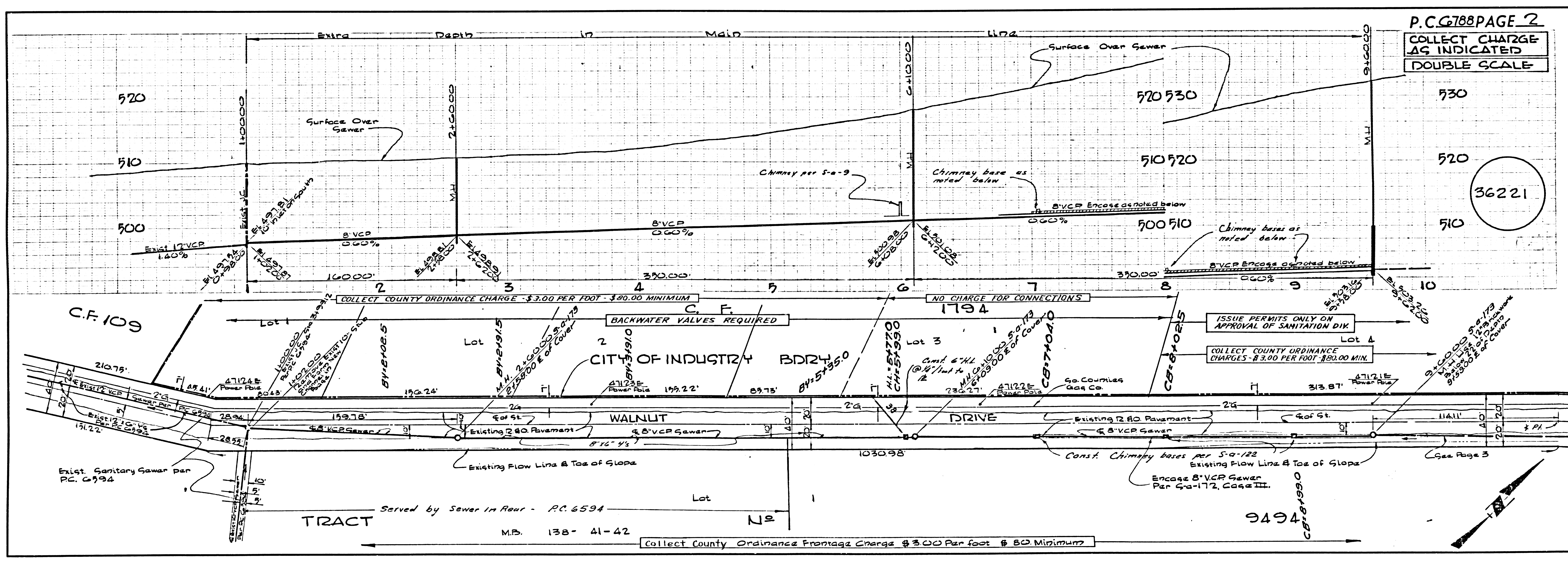
REVISION:
1. Added a.H.L. on Page 2 @ Sta 5+99.00
2. Added 36' of 8" Main, 1/2" Wye, 8" M.V. on Page 8-B @ Sta 5+16.22.
APPROVED: *[Signature]* 4-3-64
OFFICE OF THE COUNTY ENGINEER REG. C. E. NO. 11636

IF DURING THE COURSE OF CONSTRUCTION, IT IS DETERMINED THAT THERE IS LESS THAN FOUR FEET OF COVER OVER THE TOP OF A MAIN LINE OR HOUSE LATERALS FOR SEWERS WHICH IS NOT INDICATED ON THE PLANS THE PIPE SHALL BE ENCASED PER SEC. 5-C-172, C-8 & 32 UNLESS OTHERWISE APPROVED BY THE COUNTY ENGINEER.

17. ALL STATE AND LOCAL TRENCH SAFETY ORDERS WILL BE RIGIDLY ENFORCED.

NO CONNECTIONS FOR THE DISPOSAL OF INDUSTRIAL WASTES SHALL BE MADE TO SEWERS SHOWN ON THESE DRAWINGS WITHOUT WRITTEN PERMISSION FROM THE CHIEF ENGINEER AND GENERAL MANAGER OF THE COUNTY SANITATION DISTRICTS.

REVISION: PAGES 3 and 4
1. REVISED SEWER ALIGNMENT BETWEEN STA. 15+75.00 TO 14+30.00
2. CHANGED 8" V.C.P. TO 8" C.I.P. FROM STA. 10+25 TO STA. 11+75
3. USE CENTRICALLY CAST, CAST IRON PIPE, C.I. 8" 150, 2 1/2" 150 PHYSICALS WITH TYTON JOINTS OR EQUAL MECHANICAL JOINTS ON FITTINGS
4. BELLOTTED CHIMNEYS FROM STA. 3+00 TO 4+75 AND 10+45 TO 11+00
5. INSTALL 8" C.I.P. OR C.I.P. DESIGN MANUAL 2811. Date: 9-11-64
APPROVED: *[Signature]*
OFFICE OF THE COUNTY ENGINEER REG. C. E. NO. 11636



P.C. 6788 PAGE 2
COLLECT CHARGE AS INDICATED
DOUBLE SCALE

36221

ISSUE PERMITS ONLY ON APPROVAL OF SANITATION DISTRICT
COLLECT COUNTY ORDINANCE CHARGES - \$3.00 PER FOOT - \$80.00 MIN.

Collect County Ordinance Frontage Charge \$3.00 Per foot \$80.00 Minimum

