

Pico Rivera Bench Marks  
 B.M. S.D.C.B. 22-26 ELEV. 144.909  
 B.M. Pico Honda on E. Side of 2500 ft. N. of  
 Telegraph Rd. @ First Water & Power Tower  
 2250-D3, N. of Telegraph Rd. in NW. Leg. of Tower in  
 concrete base of Spring head well in road. Precise F.C.  
 1952 Levels based on L.A. Co. Survey-1952 Adj.

TEMP. B.M. #1 ELEV. 148.020  
 Set P.K. in lead N. curb Slauson Avenue  
 626 ft. E. of E. End of Bridge over Rio Hondo  
 River & 364 ft. W. of Angle Point in North curb.

PICO RIVERA BLDG. DIST. NO. 11.01

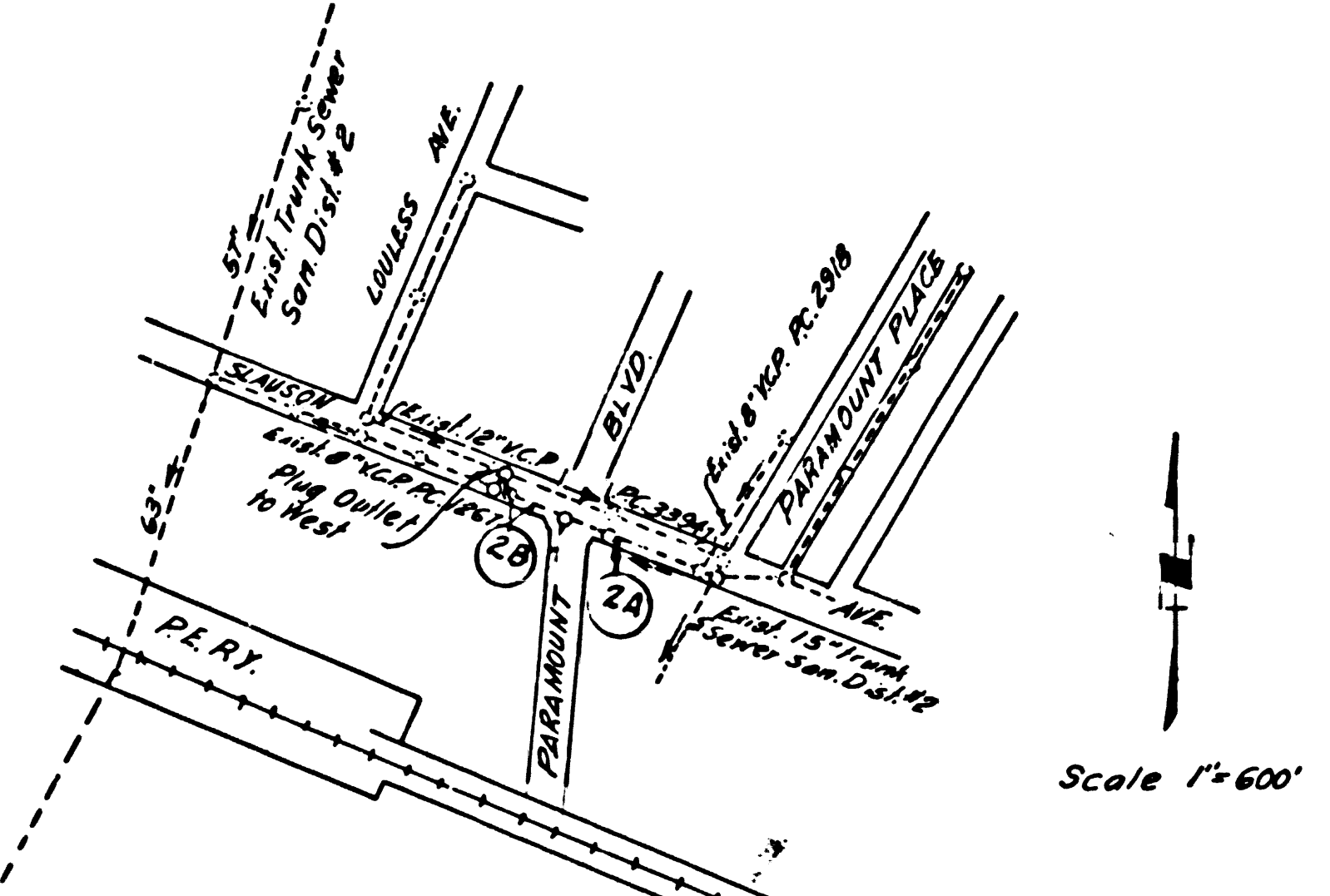
PROFILE ALIGNMENT AND GRADE OF  
**SANITARY SEWERS** PAGE 1  
 TO BE CONSTRUCTED IN  
**PARAMOUNT BOULEVARD**  
 AND  
**SLAUSON AVENUE**

PRIVATE CONTRACT NO. 6789

W.S. 36  
 1 SHEET, 2 PAGES  
 SCALE: VERT. 1"=4' HORIZ. 1"=40'  
 DATE: October 28, 1963  
 PREPARED IN THE OFFICES OF  
**C-S-T ENGINEERING COMPANY**

34483

- NOTES
- PROVIDE STAKES ON THE PROPERTY LINE OR PROPERTY LINES PRODUCED AT RIGHT ANGLES TO THE SEWER LINE AT THE CENTER LINE OF EACH MANHOLE.
  - NO REPRESENTATIVE OF THE CITY ENGINEER WILL SURVEY OR LAY OUT ANY PORTION OF THE WORK.
  - THE PRIVATE ENGINEER SHALL FURNISH THE CITY ENGINEER WITH GRADE SHEETS AND STATIONING FOR ALL HOUSE LATERALS AND Y BRANCHES AND SHALL PROVIDE STAKES FOR THEM AT THEIR PROPER LOCATIONS WITH STATIONING PLAINLY MARKED. ALL HOUSE LATERALS SHALL BE CONSTRUCTED IN A STRAIGHT ALIGNMENT AT RIGHT ANGLES FROM THE MAIN LINE SEWER EXCEPT AS SHOWN ON THE PLANS. HOUSE LATERALS FROM CHIMNEYS SHALL NOT HAVE AN ANGLE OF LESS THAN 45° WITH THE MAIN LINE SEWER. ANY CHANGE IN ALIGNMENT SHALL BE REQUESTED IN WRITING BY THE PRIVATE ENGINEER.
  - THE PRIVATE ENGINEER SHALL FURNISH THE HOUSE LATERAL DEPTH AT THE PROPERTY LINE BELOW THE TOP OF CURB ELEVATION FOR EACH HOUSE LATERAL ON THE GRAD SHEET.
  - NO REVISIONS SHALL BE MADE IN THESE PLANS WITHOUT THE APPROVAL OF THE CITY ENGINEER.
  - THE CONTRACTOR SHALL NOTIFY THE CONSTRUCTION DIVISION BY TELEPHONE, MADISON 9-0747, EXT. 81551, AT LEAST TWENTY FOUR HOURS BEFORE STARTING ANY WORK UNDER THIS CONTRACT.
  - MANHOLES SHALL BE BRICK SEWER STRUCTURES PER S-104. PRECAST CONCRETE MANHOLES PER S-135 OR S-173 MAY BE USED AS AN ALTERNATE IN LOCATIONS APPROVED BY THE CITY ENGINEER.
  - USE STANDARD MANHOLE FRAMES AND COVERS, S-117, EXCEPT AS NOTED.
  - MANHOLE TOPS IN UNIMPROVED RIGHTS-OF-WAY TO BE SIX INCHES ABOVE FINISHED GRADE.
  - USE EXTRA STRENGTH PIPE ALL PIPE IS EXTRA DEPTH.
  - USE MECHANICAL COMPRESSION JOINTS FOR ALL V.C.P. JOINTS PER SPECS., SECS. 36 & 48.
  - WHERE EVER GROUND WATER IS ENCOUNTERED DURING THE CONSTRUCTION OF THE SEWERS, THE V.C.P. JOINTS SHALL BE OF JOINT COMPOUND PER SPECS., SECS. 33 & 48, OR MECHANICAL COMPRESSION JOINTS PER SPECS., SEC. 36.
  - IF A POWER POLE IS WITHIN THREE FEET OF THE SEWER, THE SEWER SHALL BE ENCASED, PER S-173, CASE III, TWO FEET ON EITHER SIDE FROM THE POINT OF INTERFERENCE.
  - IF DURING THE COURSE OF CONSTRUCTION IT IS DETERMINED THAT THERE IS LESS THAN FOUR FEET OF COVER OVER THE TOP OF A MAIN LINE OR HOUSE LATERAL V.C.P. SEWER WHICH IS NOT INDICATED ON THE PLANS, THE PIPE SHALL BE ENCASED PER S-173, CASE III, UNLESS OTHERWISE APPROVED BY THE CITY ENGINEER.
  - HOUSE LATERALS TO BE CONSTRUCTED WITH INVERTS AT PROPERTY LINE 7 FEET BELOW SURFACE OVER SEWER.
  - RESURFACE ALL TRENCHES WITHIN PAVED AREAS TO MEET L.A. COUNTY ROAD DEPT. OR CALIFORNIA STATE HIGHWAY REQUIREMENTS IN ACCORDANCE WITH PERMITS.
  - FOR ALLOWABLE LEAKAGE TEST USE FORMULA NO. 1, 2, 3, 4, 5, 6, 7, 8, 9, 10, 11, 12, 13, 14, 15, 16, 17, 18, 19, 20, 21, 22, 23, 24, 25, 26, 27, 28, 29, 30, 31, 32, 33, 34, 35, 36, 37, 38, 39, 40, 41, 42, 43, 44, 45, 46, 47, 48, 49, 50, 51, 52, 53, 54, 55, 56, 57, 58, 59, 60, 61, 62, 63, 64, 65, 66, 67, 68, 69, 70, 71, 72, 73, 74, 75, 76, 77, 78, 79, 80, 81, 82, 83, 84, 85, 86, 87, 88, 89, 90, 91, 92, 93, 94, 95, 96, 97, 98, 99, 100.
  - All State and Local Trench Safety Orders will be rigidly enforced.
  - The Contractor at his option, may maintain only one lane of traffic in each direction during the hours 5:00 a.m. to 3:00 p.m. In order to comply with this option the contractor must deposit \$500 with the City of Pico Rivera to insure proper compliance. Any costs incurred by the City of Pico Rivera in maintaining the traffic requirements indicated in notes 20 & 22 will be deducted from this deposit.
  - The Contractor shall maintain 4 lanes open to traffic at all times during construction of Slauson Avenue Sewer crossing.
  - The Contractor shall notify C-S-T Engineering Company upon excavation of Manholes, in order to verify pipe material elevations. All other construction shall be noted and reported upon such verification.
  - The Contractor shall provide traffic control as arranged with the City of Pico Rivera before construction is started.



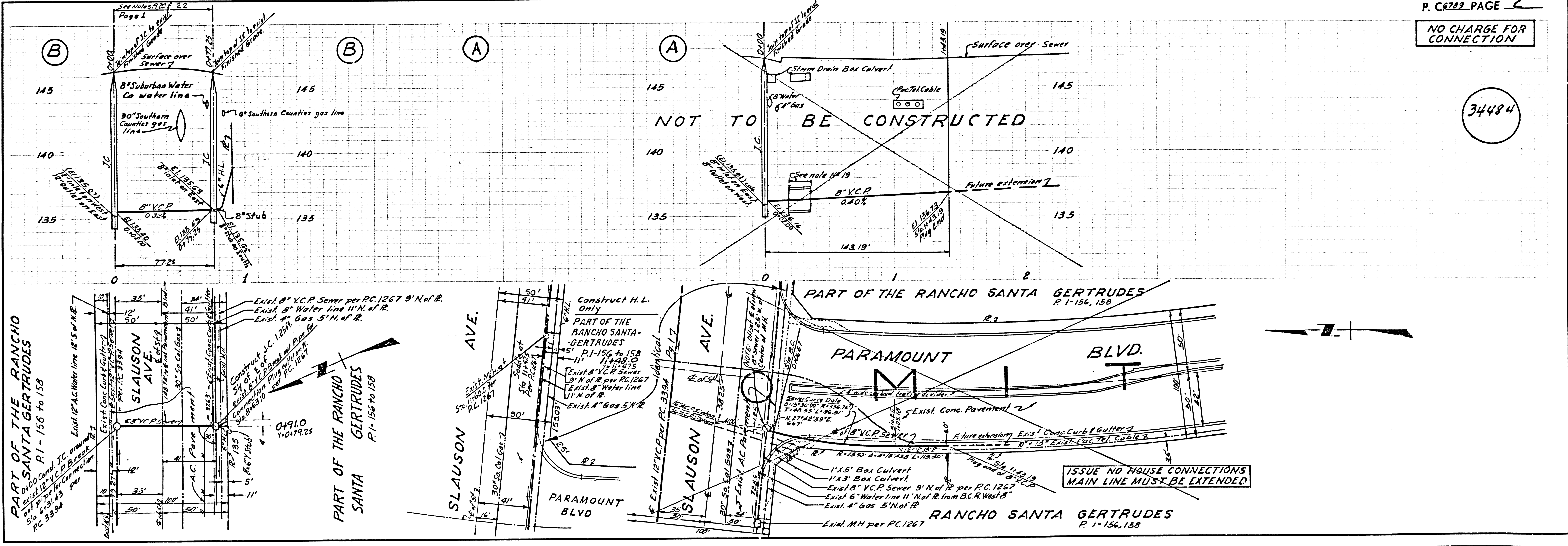
NO CONNECTIONS FOR THE DISPOSAL OF INDUSTRIAL WASTES SHALL BE MADE TO SEWERS SHOWN ON THESE DRAWINGS WITHOUT WRITTEN PERMISSION FROM THE CHIEF ENGINEER AND GENERAL MANAGER OF THE COUNTY SANITATION DISTRICTS.

COLLECT CHARGES AS INDICATED  
 Quile E. McCollum

APPROVED BY *Palt a more*  
 INDUSTRIAL WASTE DIVISION

CITY OF PICO RIVERA, CALIFORNIA  
 JOHN A. LAMBIE, CITY ENGINEER  
 J. D. PARKHURST, CHIEF ENGINEER  
 CO. SAN. DIST. NO. 11.01  
 APPROVED BY *[Signature]*  
 ASSISTANT SANITATION ENGINEER  
 APPROVED BY *[Signature]*  
 OFFICE ENGINEER  
 SUBMITTED BY *[Signature]* 1-23-64  
 LOS ANGELES REGIONAL ENGINEER REG. C.E. NO. 3871  
 CHECKED BY *[Signature]* 1-30-64  
 REG. C.E. NO. 2465  
 APPROVED BY *[Signature]*  
 CITY OF PICO RIVERA

NOTE  
 GRADES TO WHICH THIS IMPROVEMENT IS TO BE CONSTRUCTED ARE SHOWN ON PLANS AND PROFILES. GRADE POINTS FOR TOP OF CURBS, CENTER LINE OF STREETS, OR CENTER LINE OF ALLEYS ARE SHOWN BY CIRCLES ON PROFILES. AT ALL POINTS BETWEEN DESIGNATED POINTS THE GRADE SHALL BE ESTABLISHED SO AS TO CONFORM TO A STRAIGHT LINE DRAWN BETWEEN SAID DESIGNATED POINTS. ELEVATIONS ARE IN FEET ABOVE U.S.C. & G.S. SEA LEVEL DATUM OF 1929.  
 THIS DRAWING AND THE DATA HEREON ARE HEREBY MADE A PART OF THE SPECIFICATIONS.  
 WORK SHALL BE CONSTRUCTED ACCORDING TO STANDARD SPECIFICATIONS DATED MAY 29, 1962, ON FILE IN THE OFFICE OF THE CITY ENGINEER AND SHALL BE PROSECUTED ONLY IN THE PRESENCE OF THE CITY ENGINEER.  
 BEFORE WORK CAN BE STARTED, THE CONTRACTOR MUST OBTAIN A PERMIT TO EXCAVATE IN CITY STREETS FROM THE L.A. COUNTY ROAD DEPT., DISTRICT OFFICE NO. 8, AND MAKE A DEPOSIT WITH THE CITY OF PICO RIVERA, 6615 PEARSONS BLVD., SUFFICIENT TO COVER THE COST OF CONSTRUCTION INSPECTION AND RECORD PLANS.  
 APPROVAL OF THIS PLAN BY THE CITY OF PICO RIVERA DOES NOT CONSTITUTE A REPRESENTATION AS TO THE ACCURACY OF THE LOCATION OF OR THE EXISTENCE OR NON-EXISTENCE OF ANY UNDERGROUND UTILITY PIPE, OR STRUCTURE WITHIN THE LIMITS OF THIS PROJECT. THIS NOTE APPLIES TO ALL PAGES.  
 IF WORK IS TO BE DONE IN A STATE HIGHWAY, A PERMIT MUST BE OBTAINED FROM THE STATE OF CALIFORNIA, DIVISION OF HIGHWAYS, 120 SOUTH SPRING STREET, LOS ANGELES, CALIFORNIA.



P. 6789 PAGE 2  
 NO CHARGE FOR CONNECTION

34484